

SOUTHWEST

Green Line LRT Extension



Metropolitan Council Transportation Committee

October 14, 2013



Today's Topics

- Project Scope Recommendation
 - Eden Prairie Alignment
 - Freight Rail
 - Operations and Maintenance Facility
- Project Budget Recommendation
- Project Schedule



Project Scope and Budget Recommendation

- Reflects input and coordination:
 - DEIS comments: received 900+ public comments
 - City/Agency input: held 100+ Issue Resolution Team meetings
 - Project advisory input: BAC, CAC, SWCMC
 - Public input received from 16 public open houses (2100+ attendees and 1300+ public comments) and 160+ community/stakeholder meetings
 - TSAAP coordination
- Establishes scope for Municipal Consent Plans
- Provides context for continued discussions with stakeholders as project moves forward

Project Scope Recommendation

SWLRT Project Development Technical Issues


Revision 04: 28 May 2013


Technical Issues:


- 1. Eden Prairie Alignment
- 2. Nine Mile Creek Crossing
- 3. Golden Triangle Station
- 4. Shady Oak Road & TH 212 Crossing
- 5. City West Station & TH 62 Crossing
- 6. Opus Station
- 7. Opus Hill/Minnetonka-Hopkins Bridge
- 8. Shady Oak Station

- 9. PEC West/PEC East Interface Point

- 10. Downtown Hopkins Station
- 11. Excelsior Blvd. Crossing
- 12. Blake Station
- 13. Louisiana Station
- 14. Wooddale Station
- 15. TH 100
- 16. Beltline Station
- 17. West Lake Station
- 18. Kenilworth Corridor
- 19. Bassett Creek Valley Corridor
- 20. Royalston Station/Interchange Project Coordination
- 21. Freight Rail Co-location/Relocation Alternatives

 PEC West

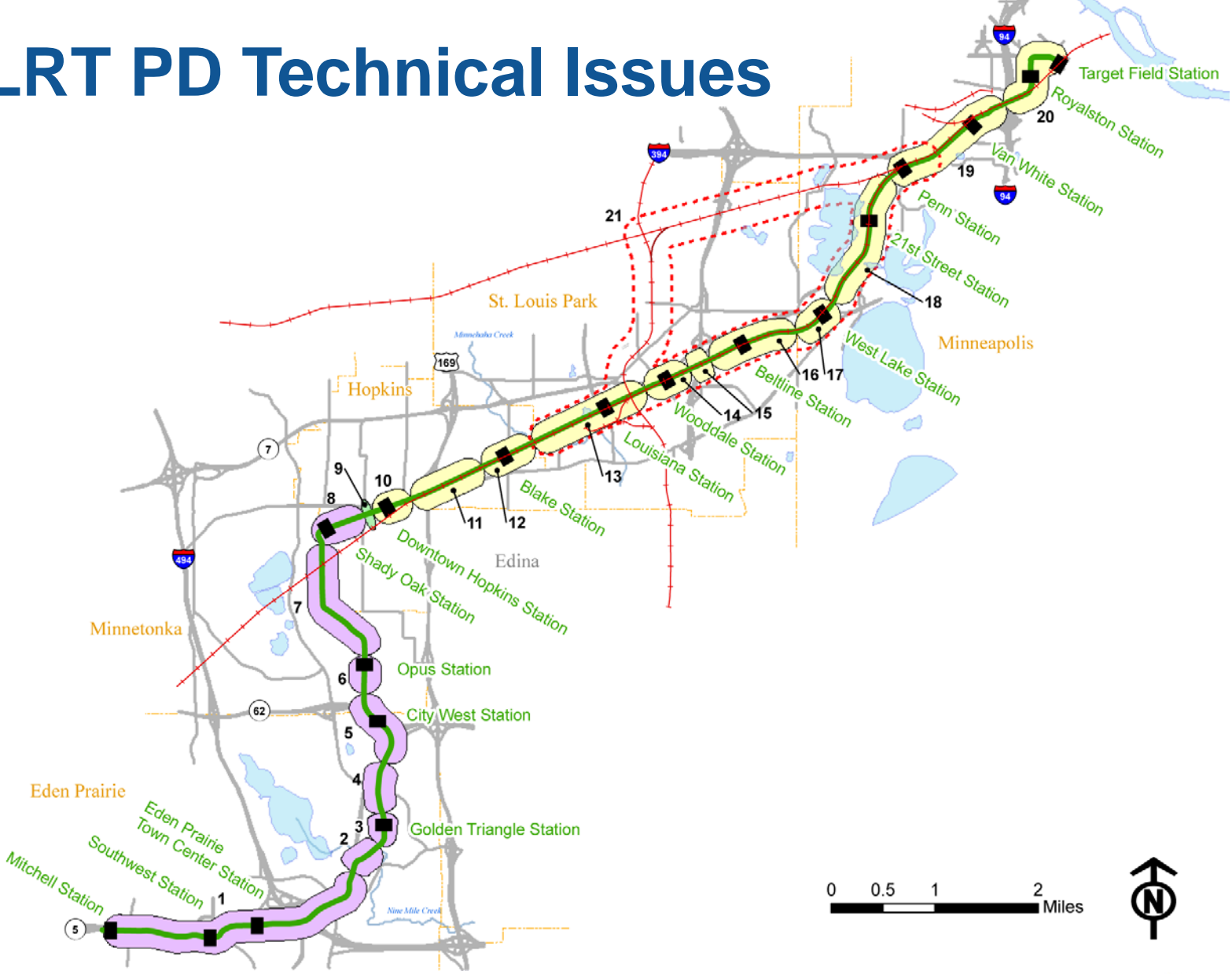
 PEC East

 Joint PEC West/PEC East

System-wide Technical Issues (not shown):

- 22. Traction Power Substation and Signal Bungalow Locations
- 23. Operation & Maintenance Facility (OMF) Location
- 24. Park & Ride, Kiss & Ride and Bus Layover Locations
- 25. Trails and LRT Interface Coordination

SWLRT PD Technical Issues



Project Scope Recommendation

- Design adjustments and cost estimates
 - Technical Issues (TI) #2 – 20, 22, 24 and 25
 - Big three issues
 - TI #1 Eden Prairie Alignment
 - TI #21 Freight Rail Co-location/Relocation
 - TI #23 Operations and Maintenance Facility (OMF)

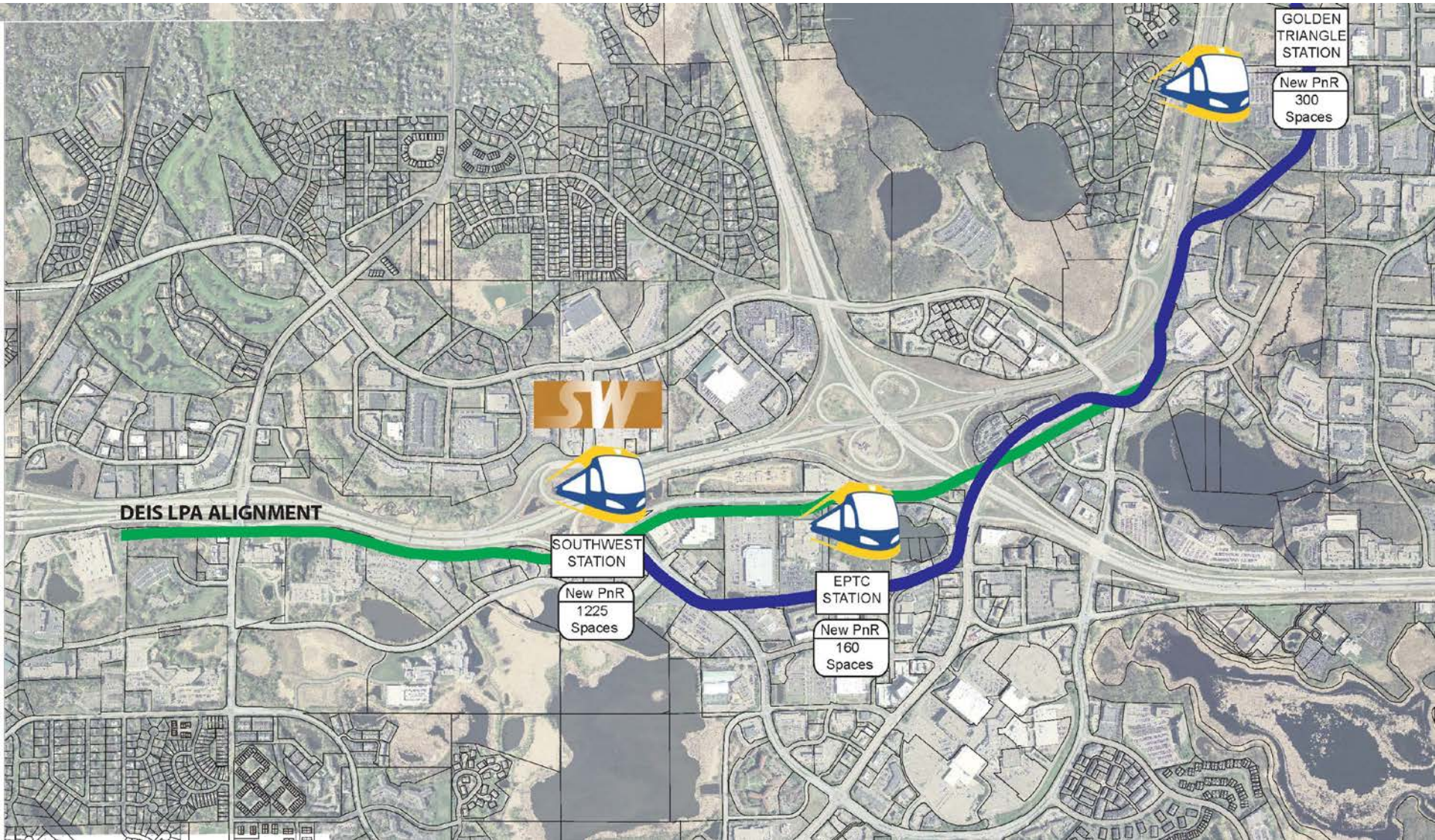
Corridor Management Committee Actions

- At its September 4 meeting, the CMC voted to recommend to the Council
 - Eden Prairie Alignment: Comp Plan Alignment to Southwest Station
 - Removal of the Deep Bore LRT Tunnel option from further consideration
- At its September 11 meeting, the CMC voted to recommend to the Council:
 - Hopkins Site 9A for the OMF location
- At its October 9 meeting, the CMC voted to recommend to the Council a project scope and budget

Technical Issue #1

Eden Prairie Alignment

TI #1 Eden Prairie Alignment: Adjustment #5



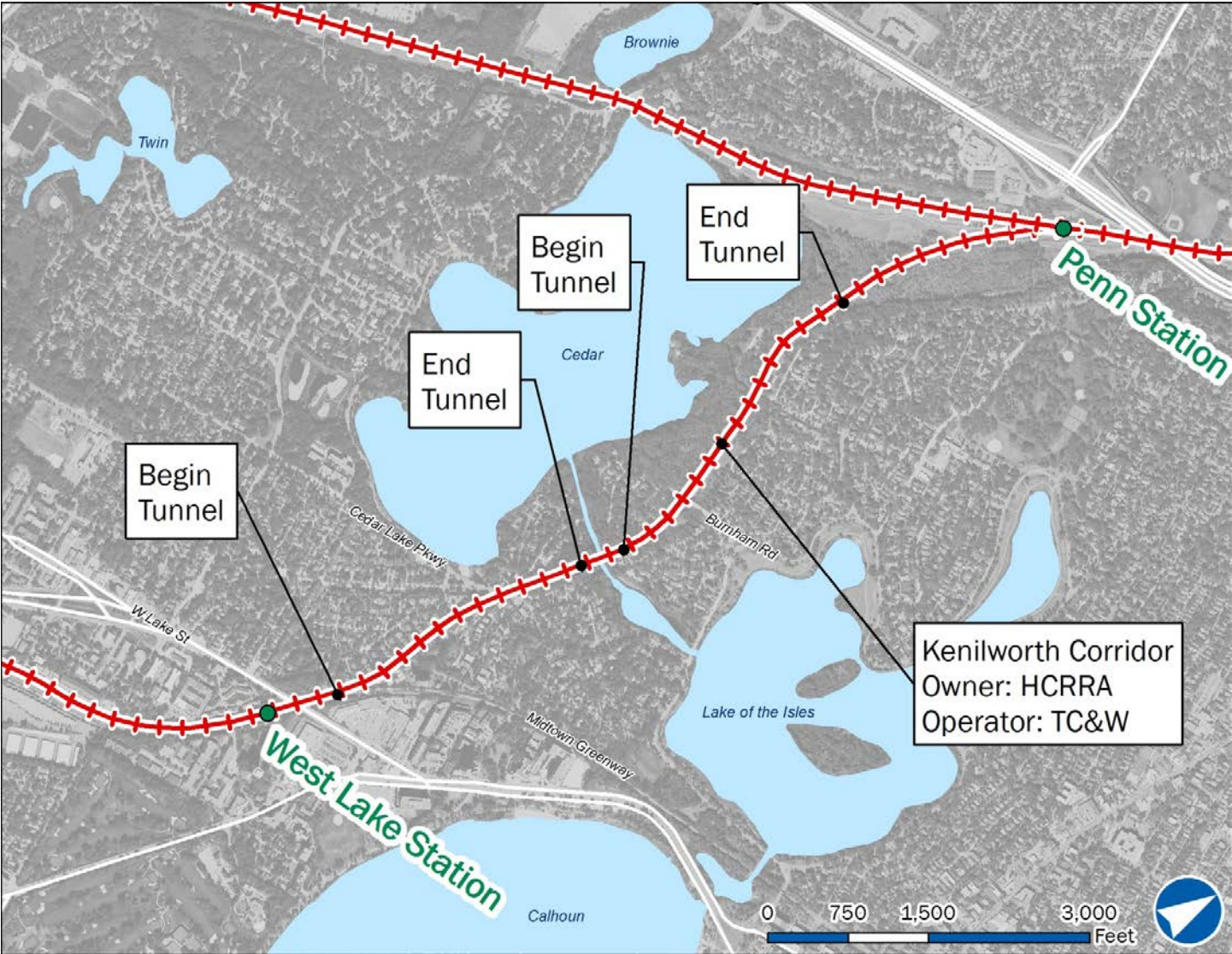
TI #1: Eden Prairie Alignment

- Comp Plan alignment with a Town Center Station to Southwest Station
- Benefits:
 - Meets City's desire for a Town Center station location on the Comp Plan alignment
 - Serves Southwest Station
 - Provides multi-modal connection between express and local bus and light rail transit
 - Estimated **\$75-\$80 M** savings
 - Avoids potential wetland and floodplain impacts

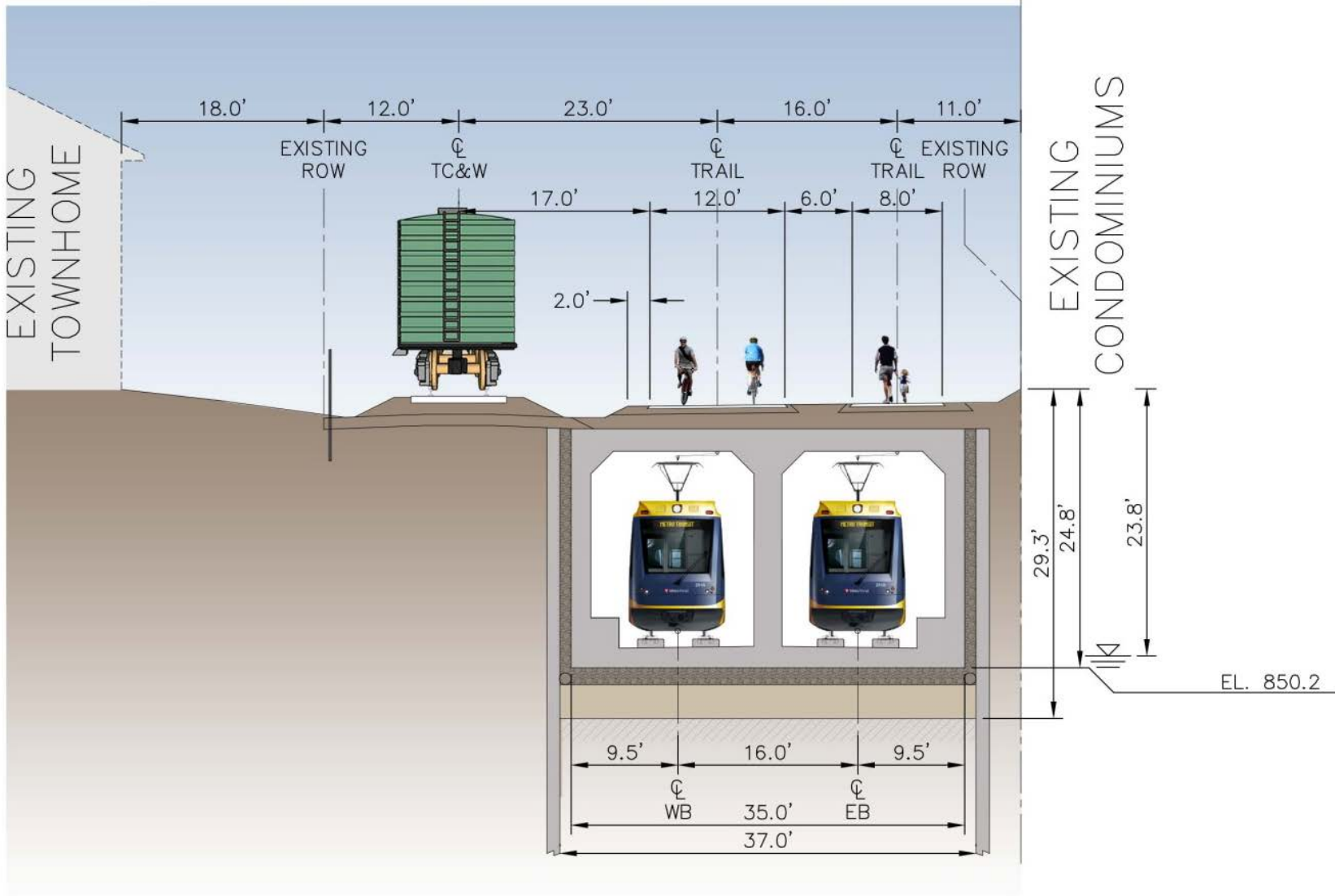
Technical Issue #21

Freight Rail

TI #21: Freight Rail: Shallow LRT Tunnel



Kenilworth Shallow LRT Tunnel



Kenilworth Shallow LRT Tunnel: Gap Between South and North Tunnels – Existing Condition



Kenilworth Shallow LRT Tunnel: Gap Between South and North Tunnels - Rendering



Kenilworth Shallow LRT Tunnel: Gap Between South and North Tunnels – Existing Condition



Kenilworth Shallow LRT Tunnel: Gap Between South and North Tunnels - Rendering

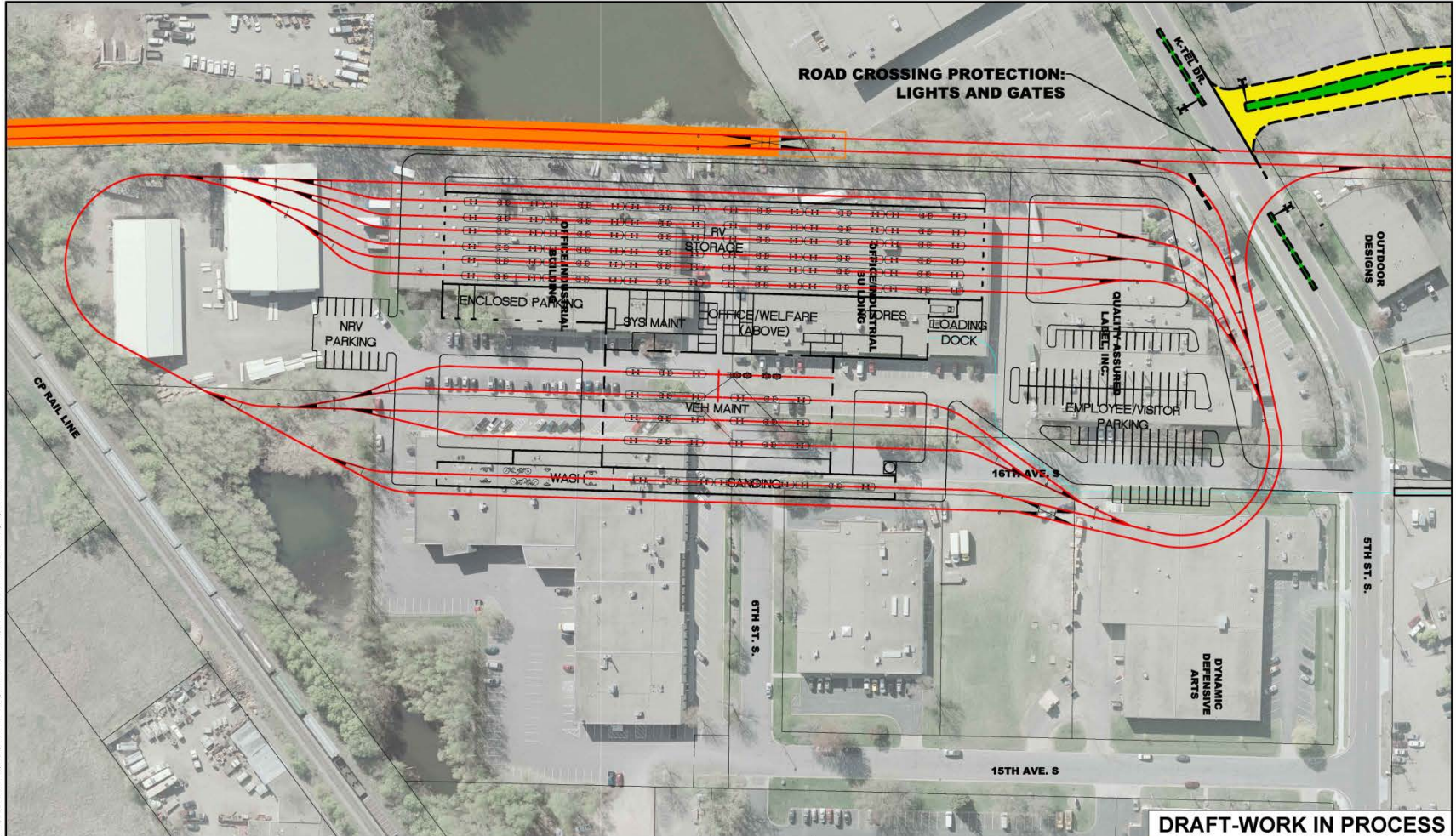


Technical Issue #21: Shallow LRT Tunnel

- No acquisition of homes and businesses
- Option most similar to existing condition
- 200+ LRT trips per day mostly below grade through Kenilworth Corridor
- Kenilworth Trail stays within corridor and preserved for the long-term
- Design protects water resources
- Estimated **\$40 M** less expensive than Brunswick Central freight rail relocation

Technical Issue #23: Operations and Maintenance Facility (OMF)

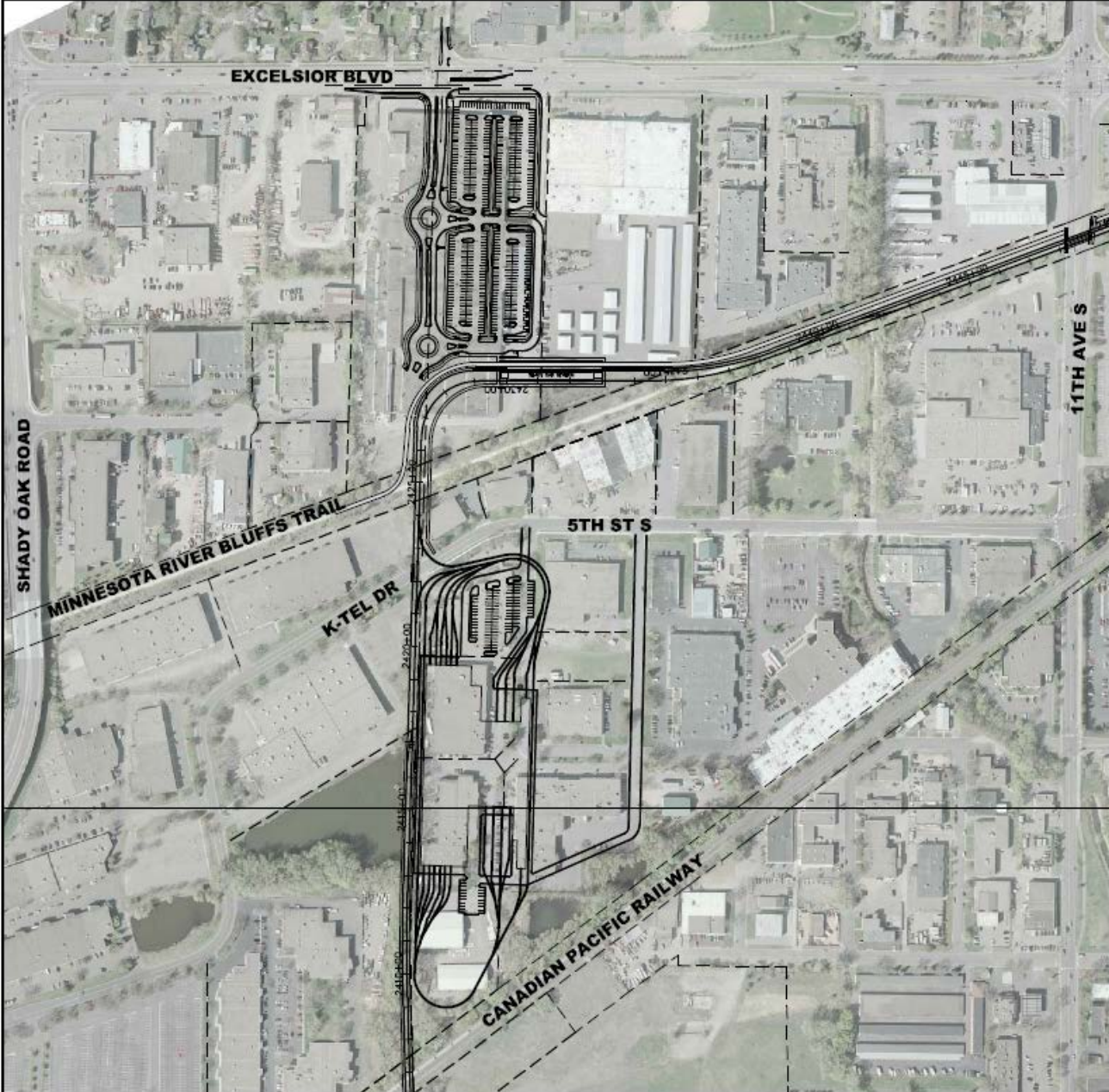
TI #23 OMF Site Location: Hopkins



Jun, 28 2012 09:13 am V:\3200_PEC-WCA0\SC0MENT-WA\EXHIBITS\TRACK\EDHB-TRK-OMF-009A_1.dwg By: Borchio

	<p>SOUTHWEST LRT OMF OPTION 009A (009A_1) TRACK ADJUSTMENT 3A</p>	<p>IRT: #23 REV: 0 DATE: 06/28/2013</p>			
--	--	---	---	---	---

TI #23 OMF Site Location: Hopkins



TI #23 OMF Site Location: Hopkins

- Zoned industrial
- Freight rail and proposed LRT alignment buffer south and west property borders
- 6 fewer train operators than other final candidate site
- Annual operating cost savings of \$500K compared to other final candidate site
- Redevelopment potential of remnant areas

Project Budget Recommendation

Project Budget Recommendation

- SWLRT Base Project \$1.390 B
- Freight Rail
 - Common Elements \$.090 B
 - Kenilworth Shallow LRT Tunnel \$.160 B
- Scope/Cost Reductions (\$\$.087 B)
- SWLRT Adjusted Budget \$1.553 B*

*Includes 27% contingency allowance

Project Schedule

Southwest LRT Development Timeline

2013

Project Development

2014

Environmental Documentation Complete

2014 – 15

Engineering

2015

Full Funding Grant Agreement

2015 – 17

Heavy Construction

2018

Passenger Operations

Municipal Consent Process

- Metropolitan Council submits municipal consent design plans to cities/county
- Metropolitan Council/Hennepin County Regional Railroad Authority hold joint public hearing 30 days following municipal consent design plan submittal on November 19, 5:30 p.m. at Hennepin County Government Center
- City/County open house/public hearing/approval of plans within 45 days of joint public hearing

Recommendation

1. Adopt Resolution to direct Southwest Project Office to proceed with Project Development;
2. Prepare and submit Municipal Consent Plans to Hennepin County and the five host cities of Eden Prairie, Hopkins, Minneapolis, Minnetonka and St. Louis Park; and
3. Hold a joint public hearing with Hennepin County Regional Railroad Authority on the plans on November 19, 2013.

More Information

Online:

www.SWLRT.org

Email:

SWLRT@metrotransit.org

Twitter:

www.twitter.com/southwestlrt



SOUTHWEST

Green Line LRT Extension

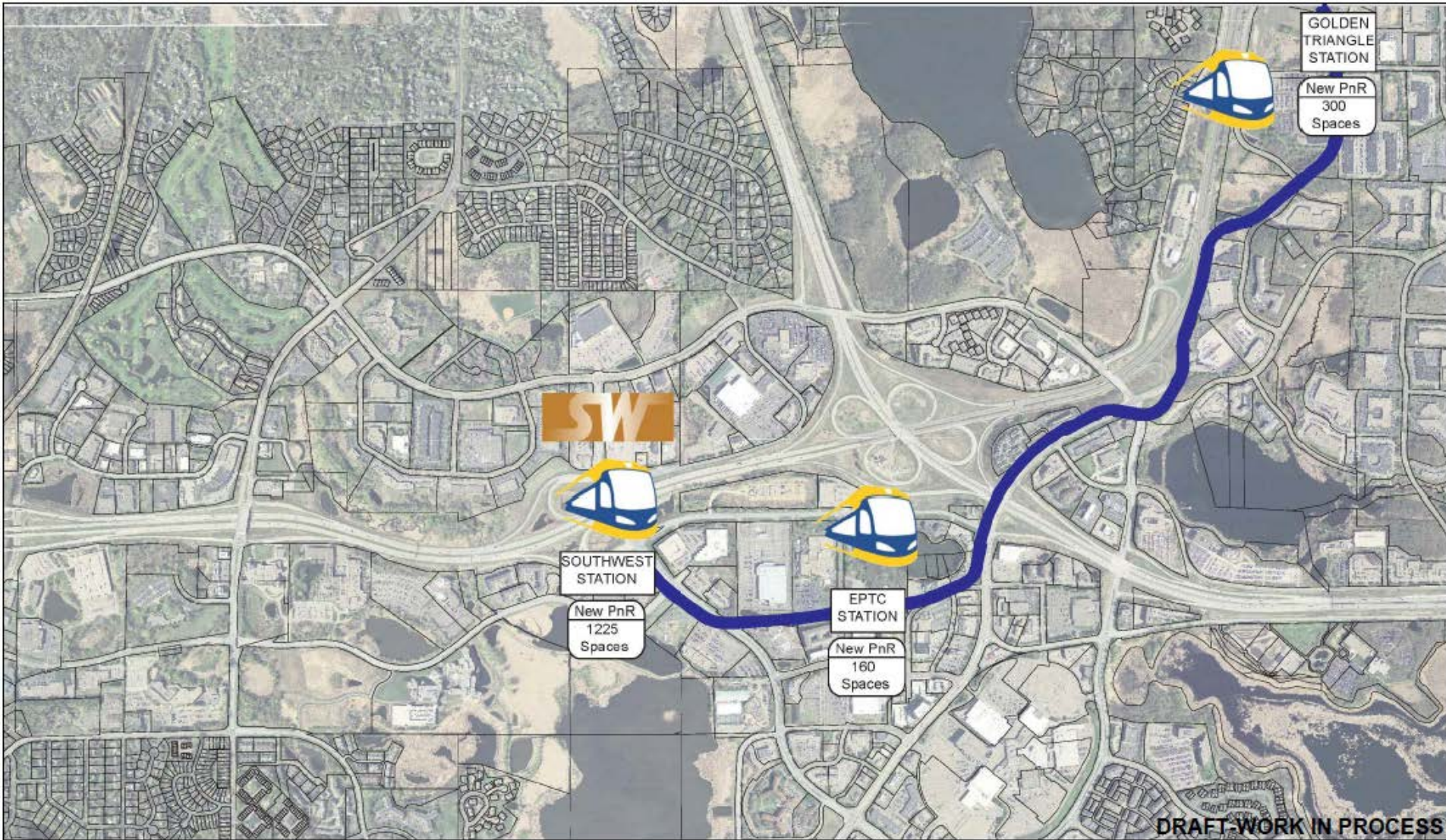


SWLRT Technical Packet

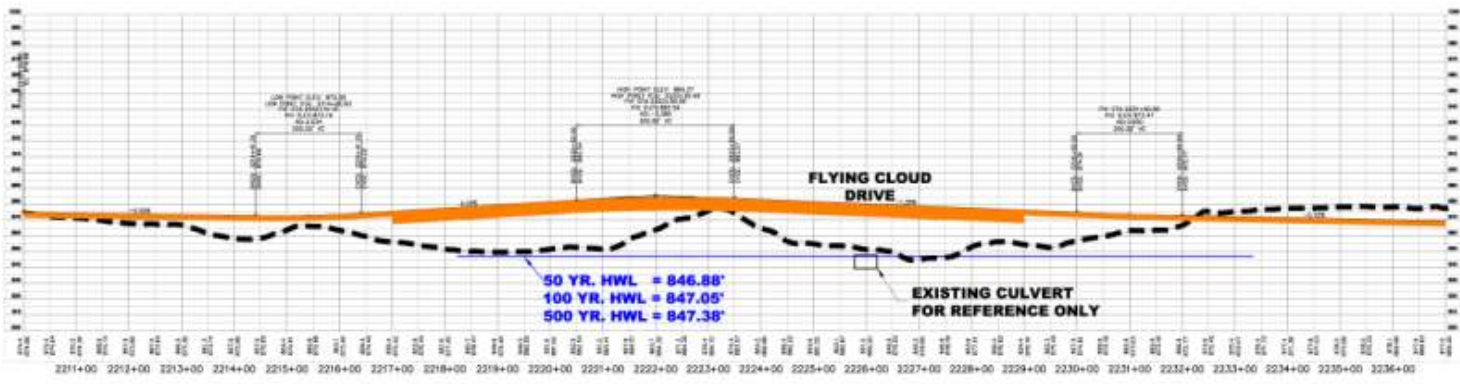
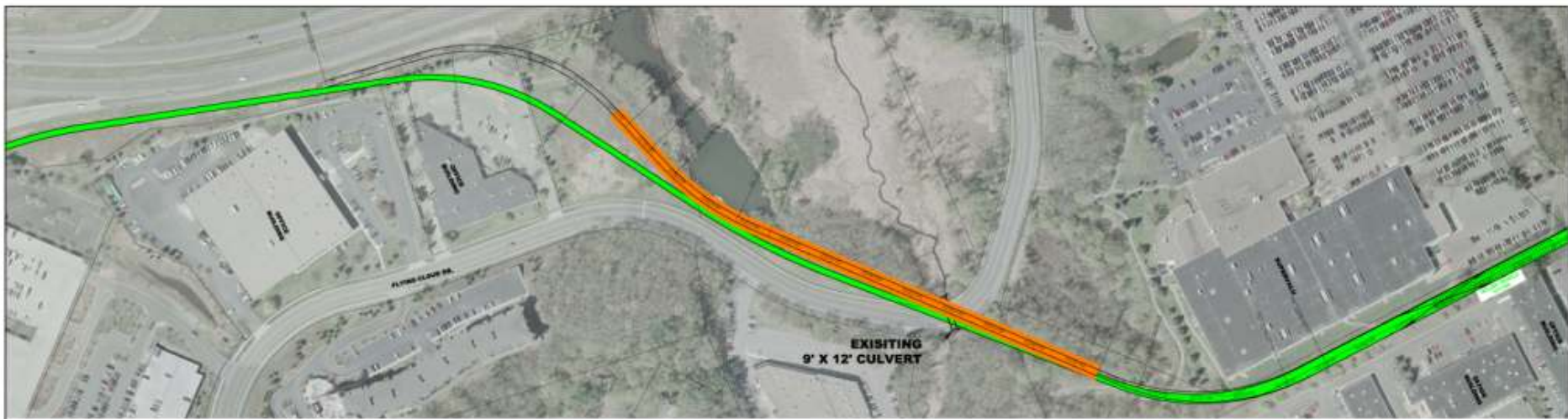
October 14, 2013



TI #1 Eden Prairie Alignment: Adjustment #5



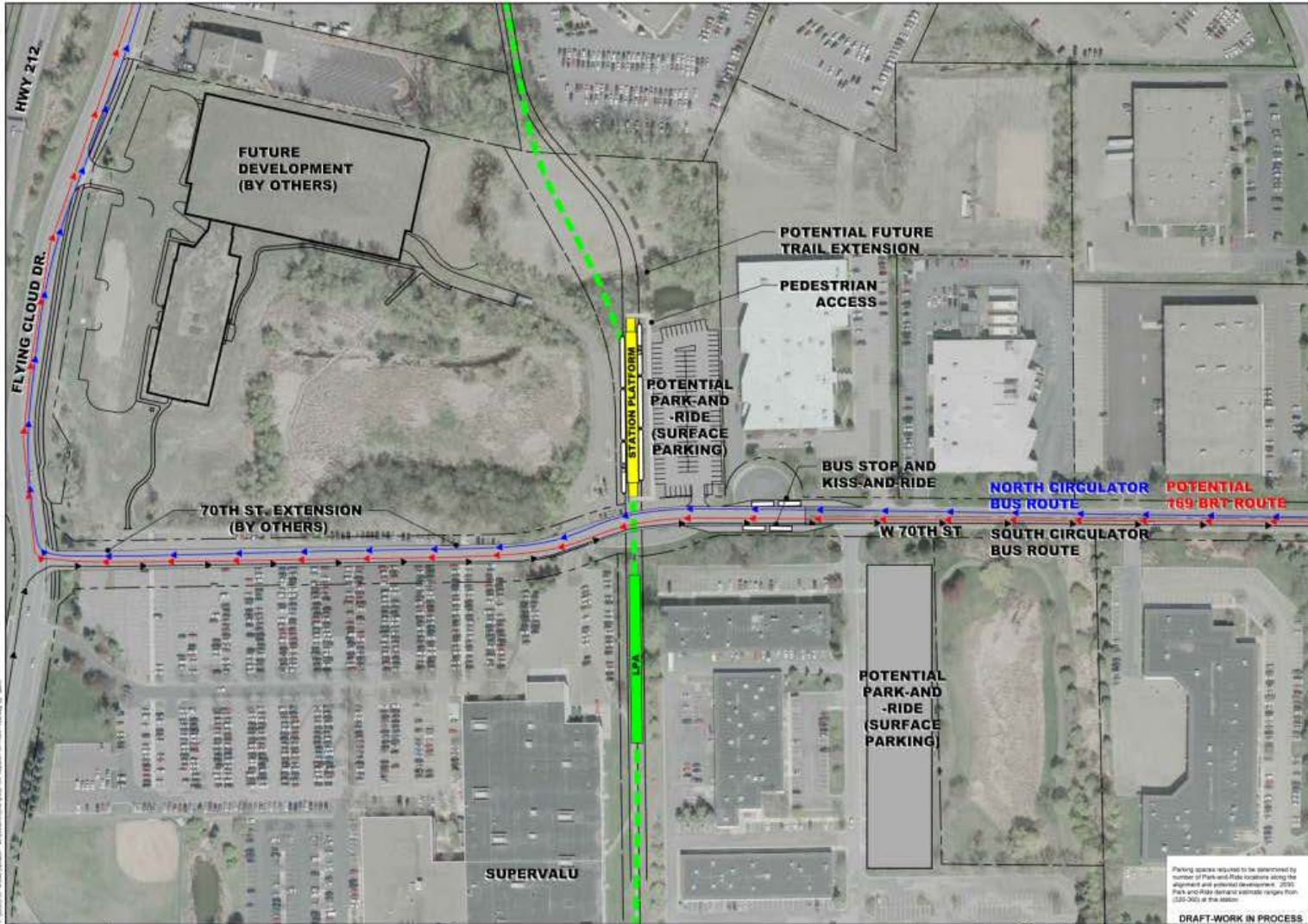
TI #2: 9-Mile Creek Crossing



DRAFT - WORK IN PROCESS

	<p>SOUTHWEST LRT TI-2: NINE MILE CREEK CROSSING ALIGNMENT A/E</p>	<p>REV 1 DATE: 08/06/2013</p>			<p>AECOM</p>
--	--	--	--	--	---------------------

TI #3: Golden Triangle Station

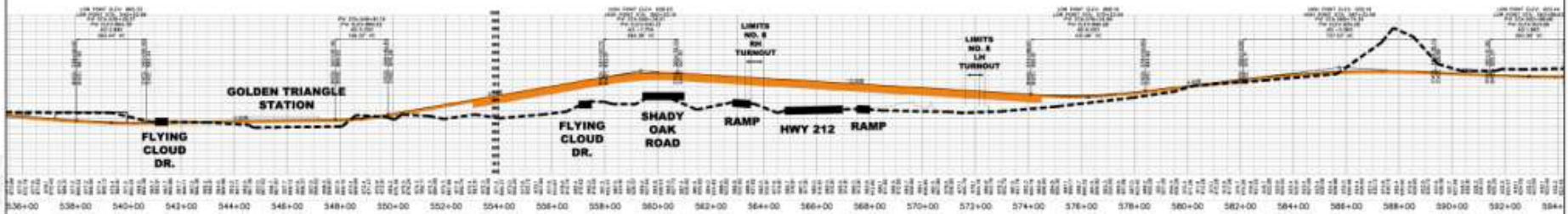


Parking spaces required to be determined by number of Park-and-Ride locations along the alignment and potential development. 2010 Park-and-Ride locations estimate range from (200-300) at this station.

DRAFT-WORK IN PROCESS

	<p>SOUTHWEST LRT TI-3: GOLDEN TRIANGLE STATION</p>	<p>IRT: 3 REV: 1 DATE: 09/03/13</p>		
--	---	---	--	--

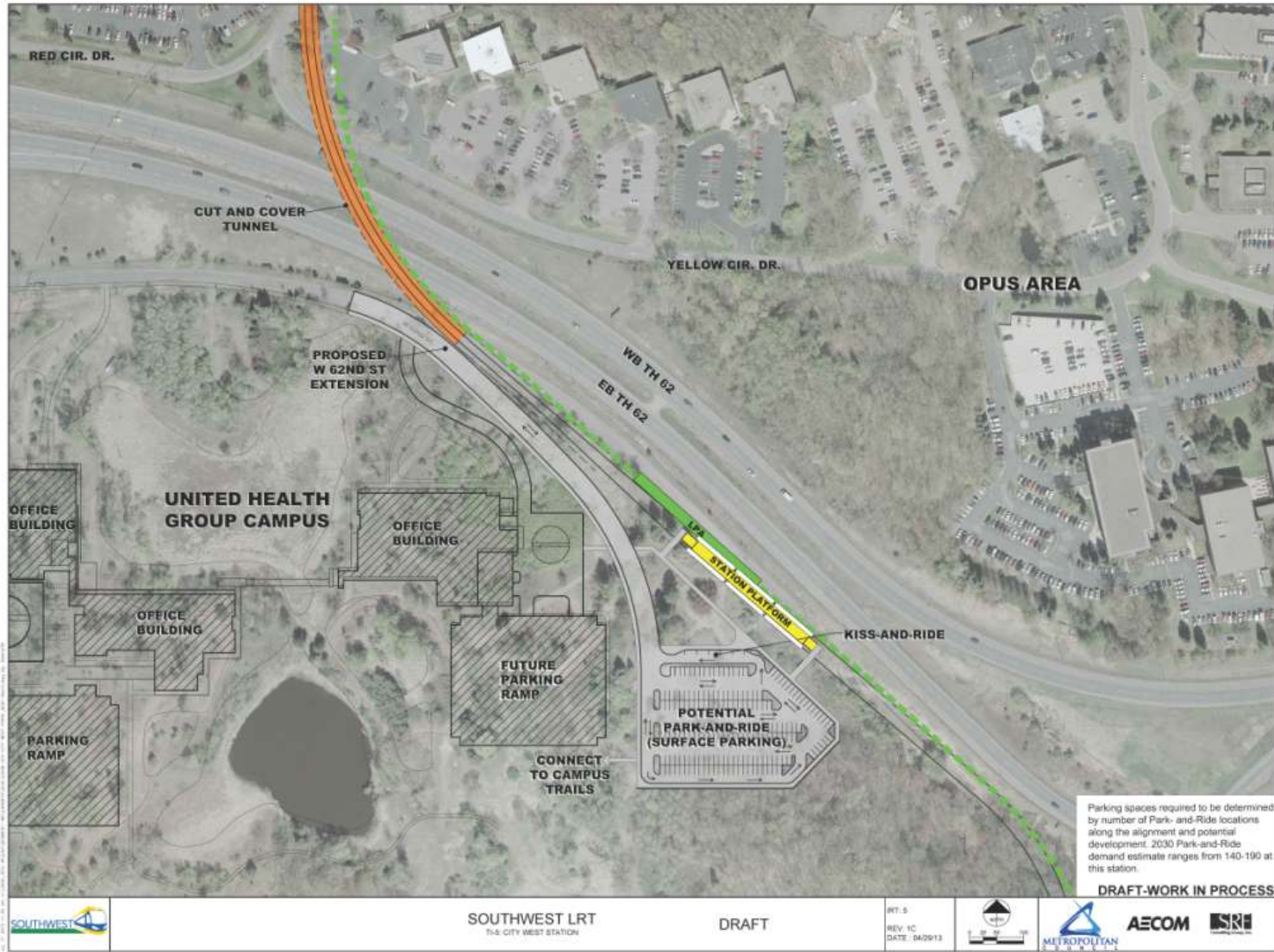
TI #4: Shady Oak Road & TH 212 Crossings



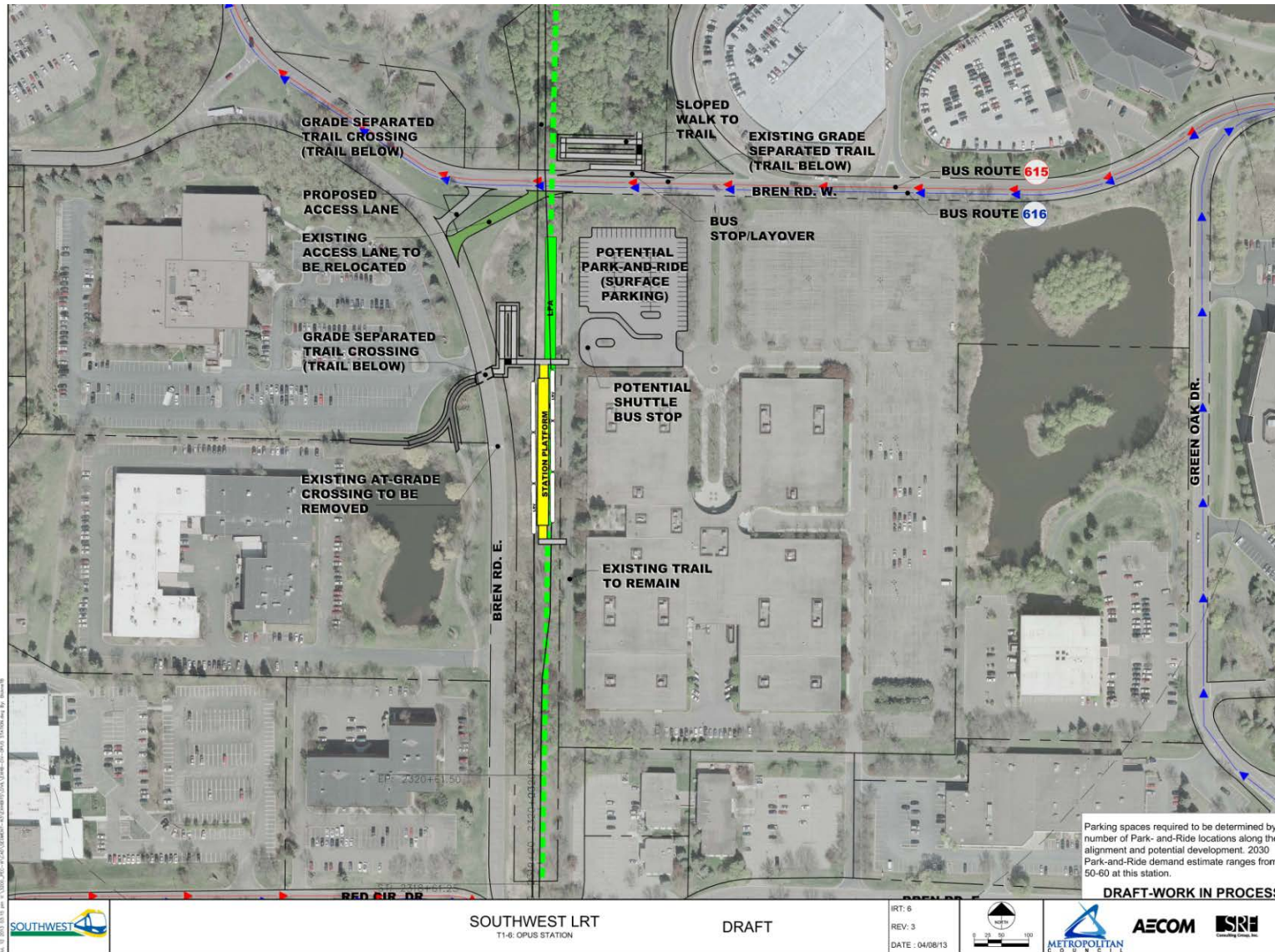
DRAFT - WORK IN PROCESS

	<p>SOUTHWEST LRT TI 4: SHADY OAK ROAD CROSSING</p>	<p>RT 80 REV 1 DATE: 8/15/2013</p>			<p>AECOM</p>
--	--	--	--	--	--------------

TI #5: City West Station & TH 62 Crossing



TI #6: Opus Station



SOUTHWEST LRT
T1-6: OPUS STATION

DRAFT

IRT: 6
REV: 3
DATE: 04/08/13



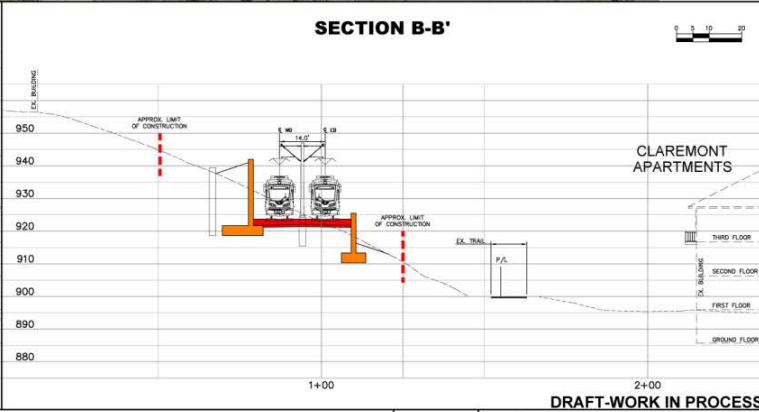
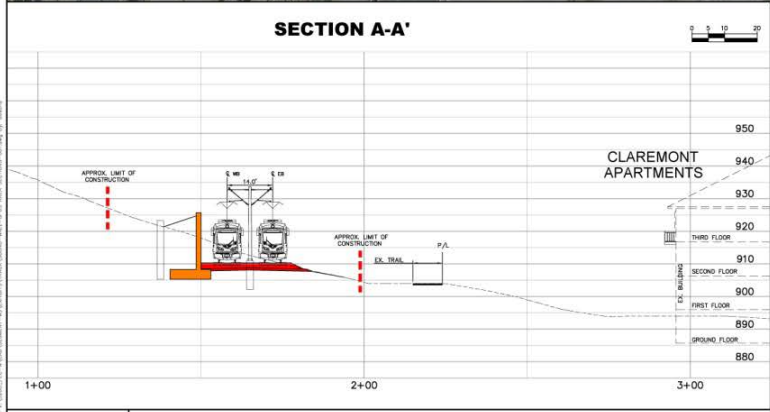
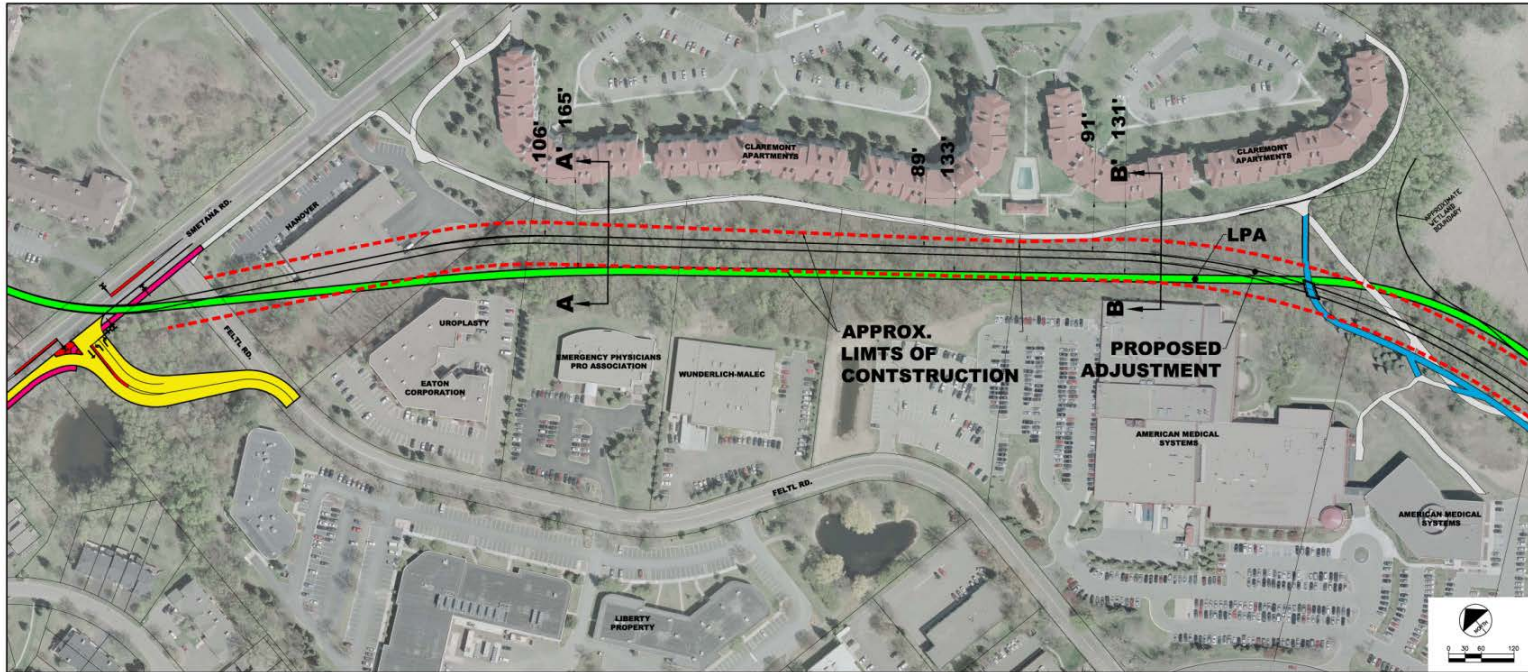
AECOM

SRI

DRAFT-WORK IN PROCESS



TI #7: Opus Hill



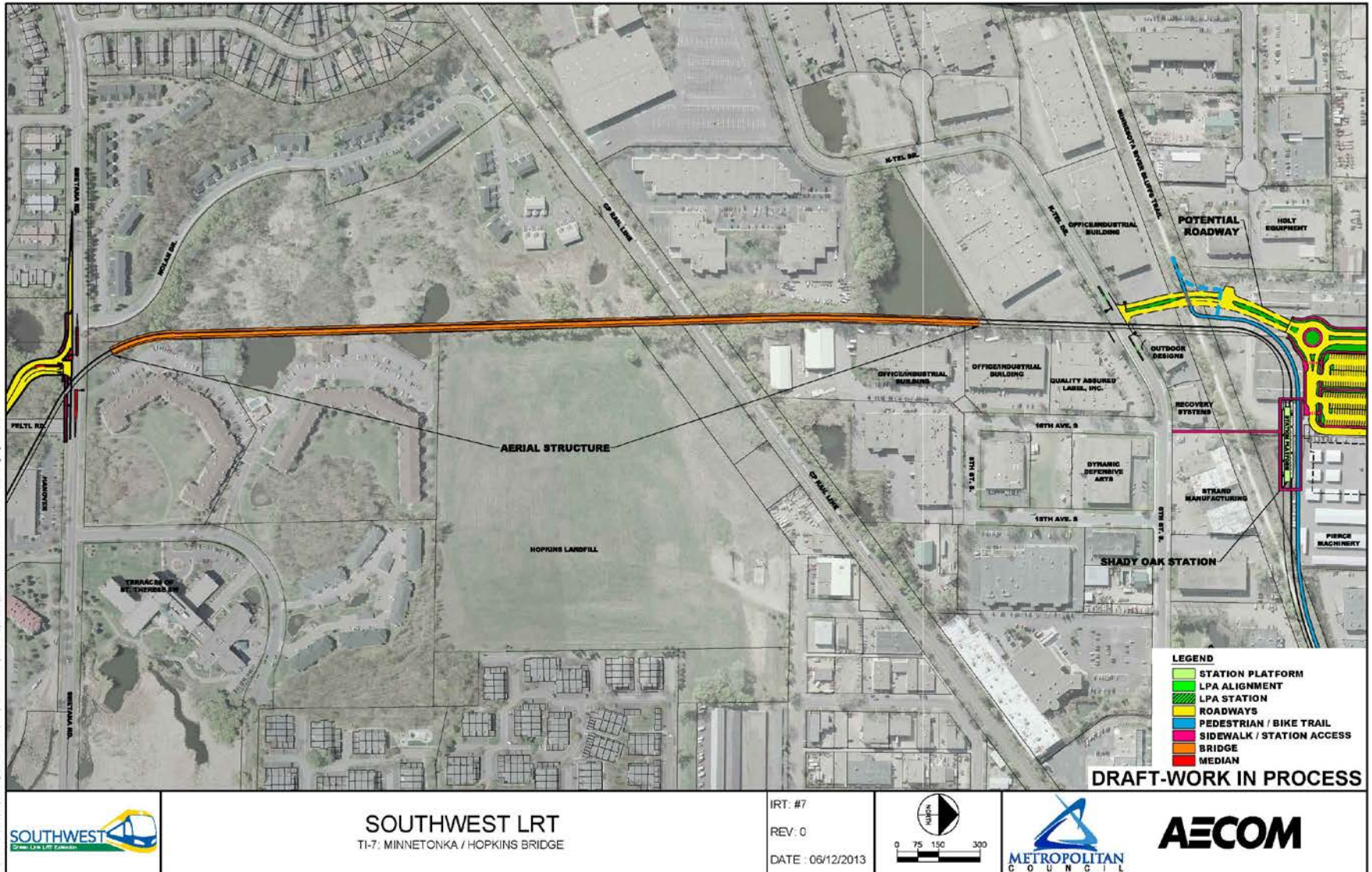
SOUTHWEST LRT
TI-7: OPUS HILL

IRT-#7
REV: 0
DATE: 04/24/2013

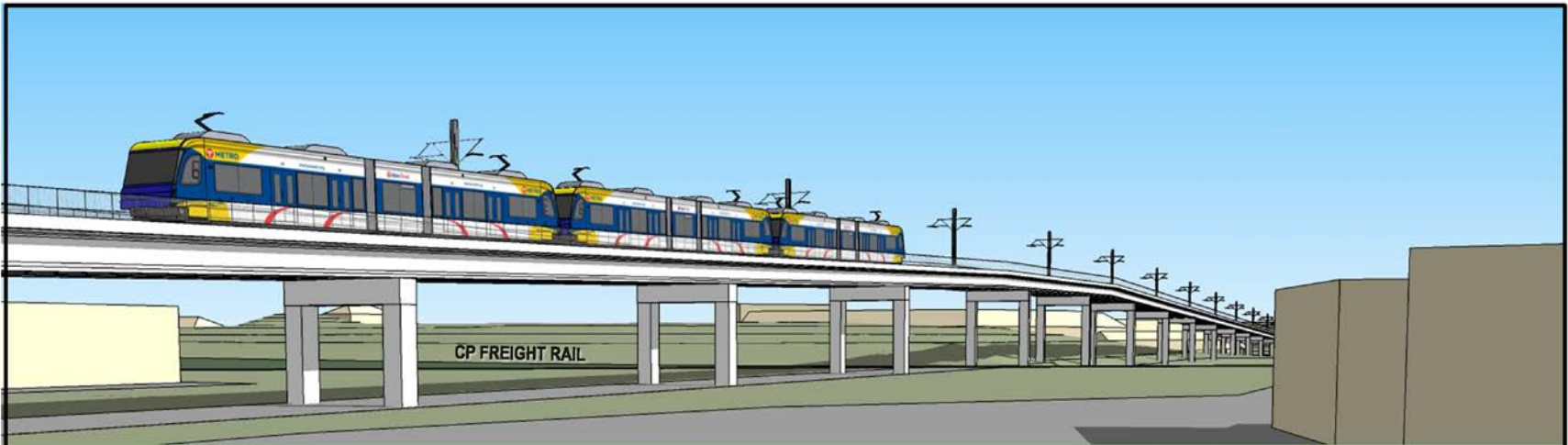


DRAFT-WORK IN PROCESS

TI #7: Minnetonka/Hopkins Bridge



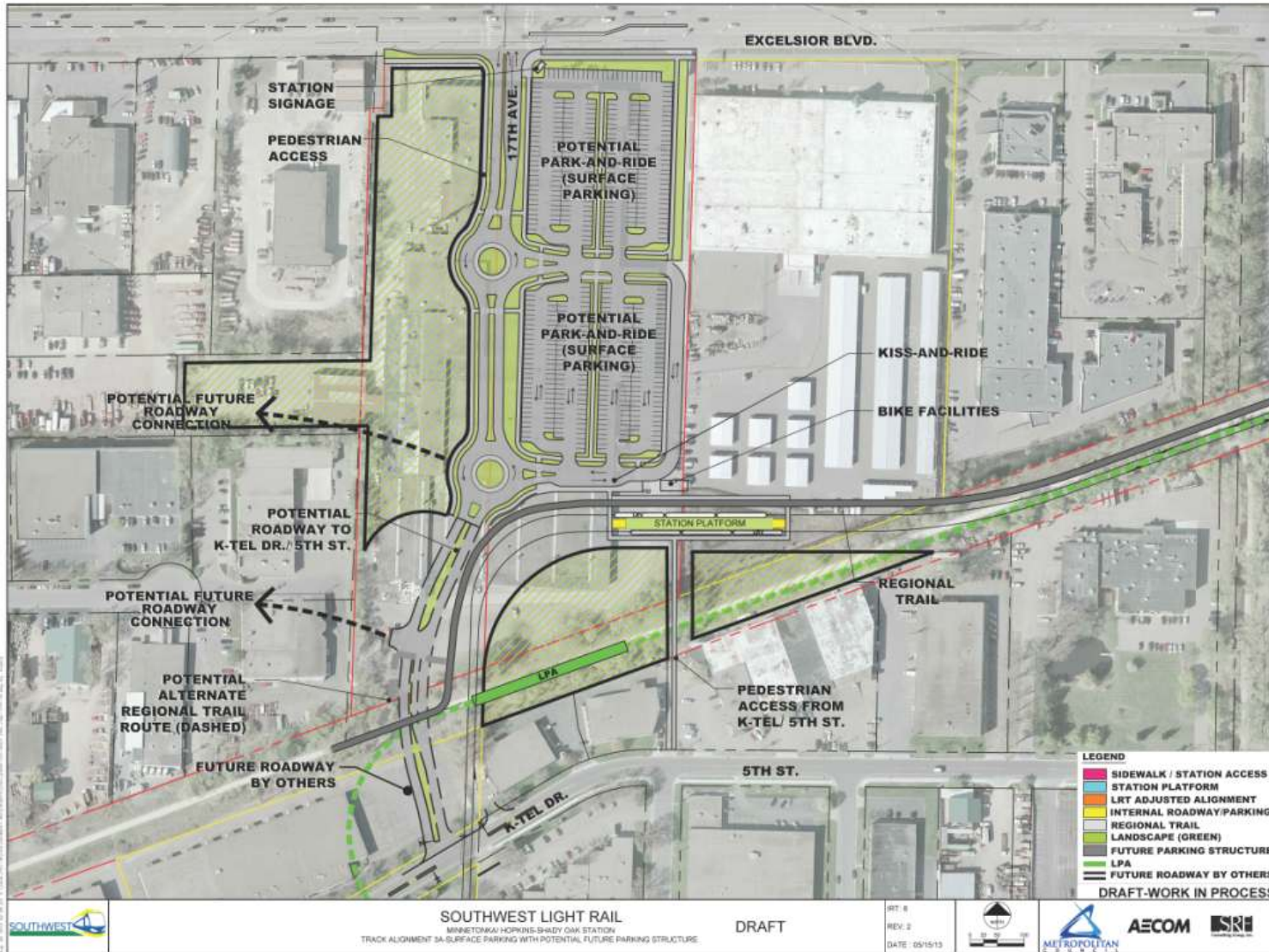
TI #7: Minnetonka/Hopkins Bridge



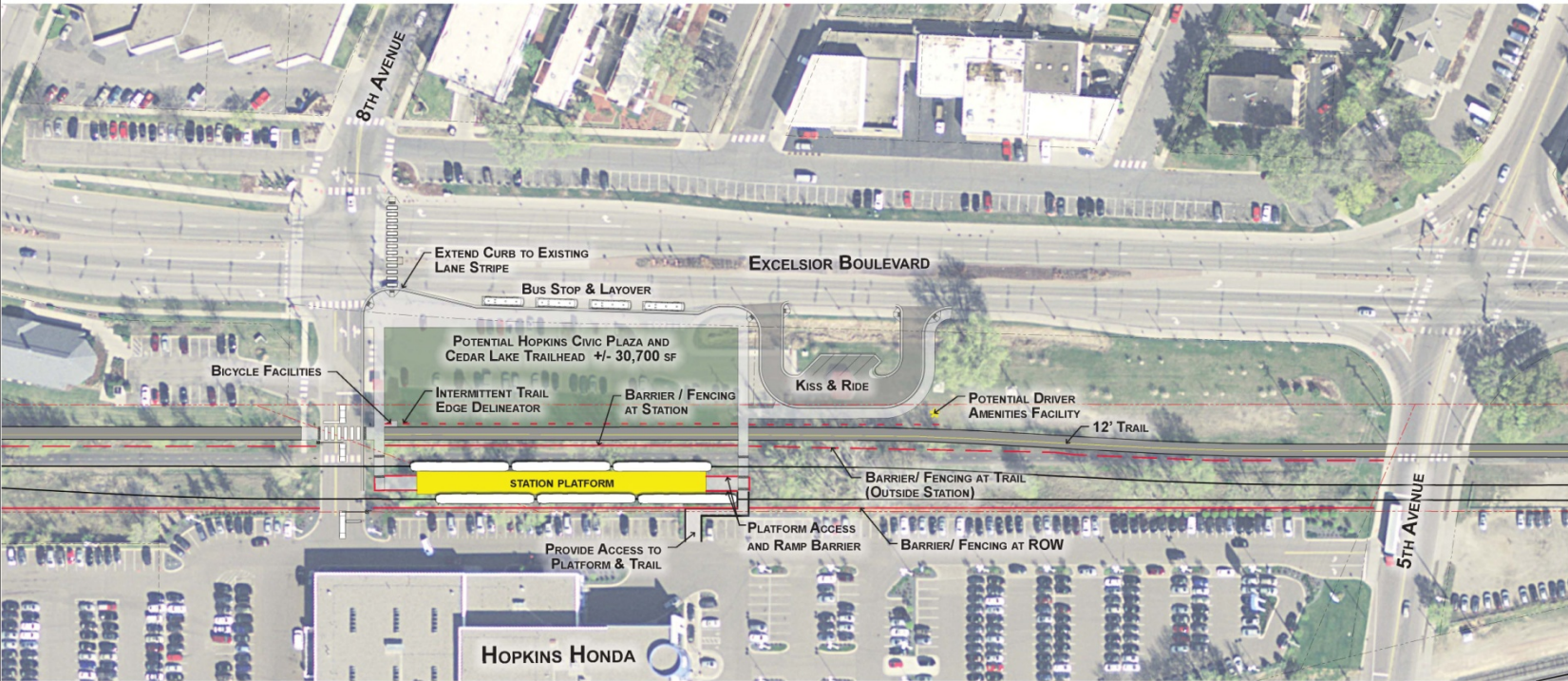
Jan. 12, 2013 02:48 PM V:\32090_PEC-W\COMMON\32090_BLOCK\BROOKSIDE_VAP-GEN-CBT-1010-2224.dwg By: BickertB

	<p align="center"> SOUTHWEST LRT TI-7: MINNETONKA/ HOPKINS BRIDGE VIEW LOOKING SOUTHEAST </p>	<p> IRT: 7 REV: 0 DATE : 06.12.2013 </p>	
--	--	--	--

TI #8: Shady Oak Station



TI #10: Downtown Hopkins Station



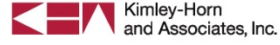
Jul 16 2013 05:27 pm W:\3300_PEC-E\CAD\SEBMITT\EXHIBITS\04\11-HOPKINS STATION-SITE DPT Adop Bf: burierCC

DRAFT-WORK IN PROCESS



SOUTHWEST LIGHT RAIL
HOPKINS - DOWNTOWN HOPKINS STATION

IRT #10
Rev 1
04/24/2013

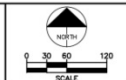


TI #11: Excelsior Boulevard Crossing

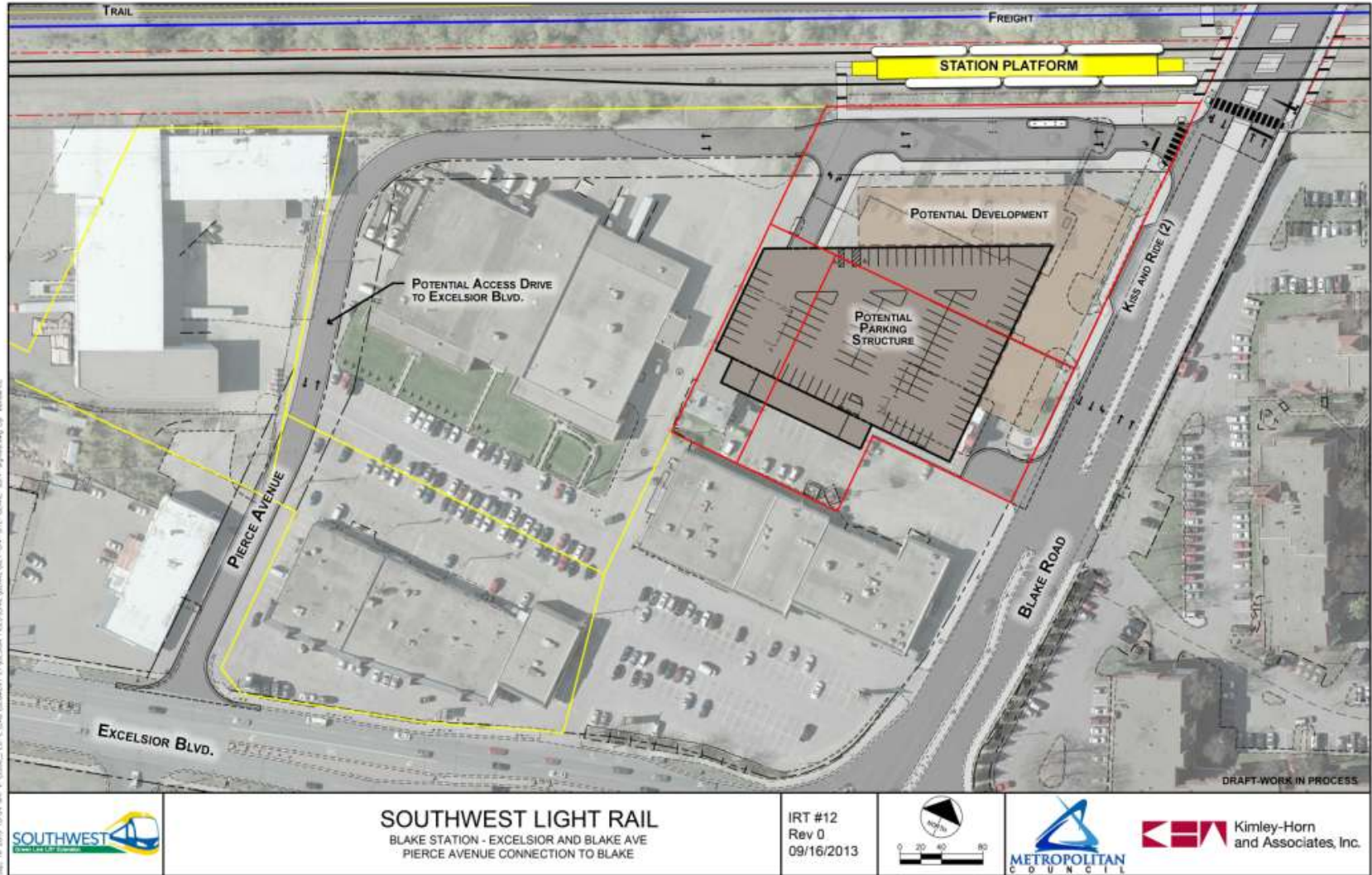


SOUTHWEST LIGHT RAIL
 HOPKINS - EXCELSIOR CROSSING
 CAST IN PLACE POST-TENSIONED CONCRETE BOX BRIDGE

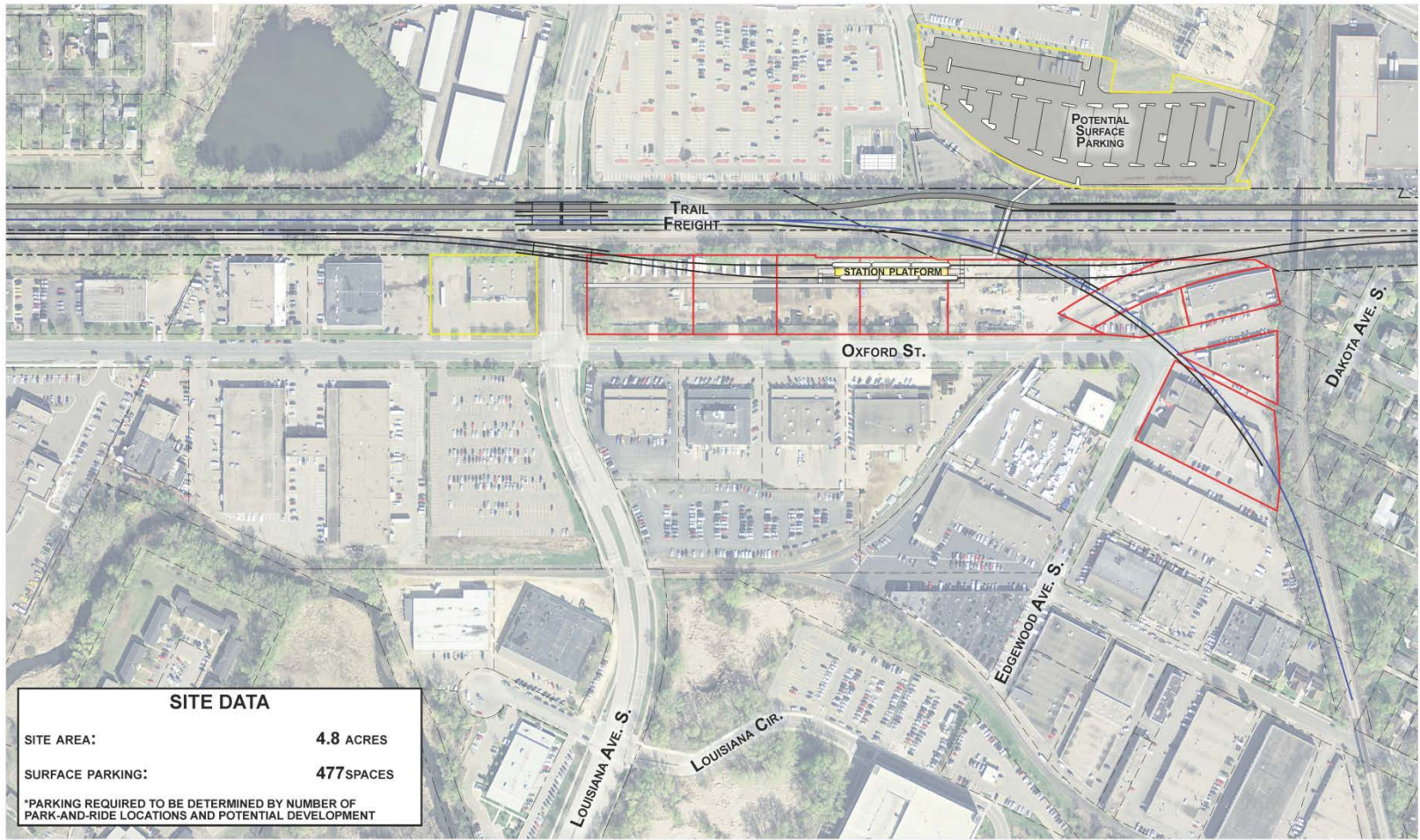
IRT #11
 Rev 2
 05/29/2013



TI #12: Blake Station



TI #13: Louisiana Station



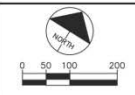
SITE DATA	
SITE AREA:	4.8 ACRES
SURFACE PARKING:	477 SPACES
*PARKING REQUIRED TO BE DETERMINED BY NUMBER OF PARK-AND-RIDE LOCATIONS AND POTENTIAL DEVELOPMENT	

DRAFT-WORK IN PROCESS



SOUTHWEST LIGHT RAIL
ST. LOUIS PARK
LOUISIANA STATION 4 - CO-LOCATION

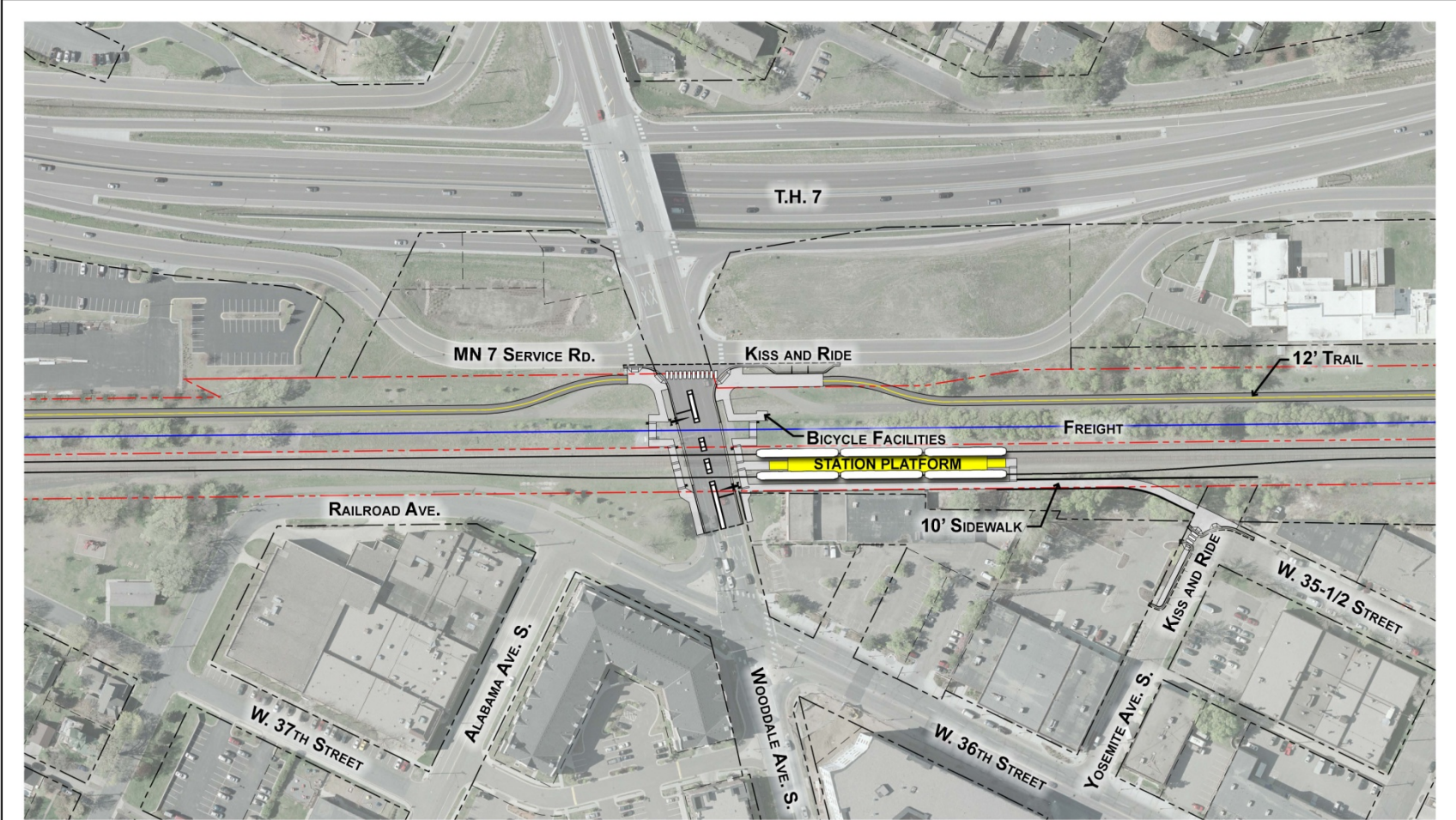
IRT #13
Rev 1
05/21/2013



Kimley-Horn and Associates, Inc.



TI #14: Wooddale Station

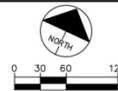


DRAFT-WORK IN PROCESS



SOUTHWEST LIGHT RAIL
ST. LOUIS PARK - WOODDALE STATION
CO-LOCATION

IRT #14
Rev 0
09/03/2013

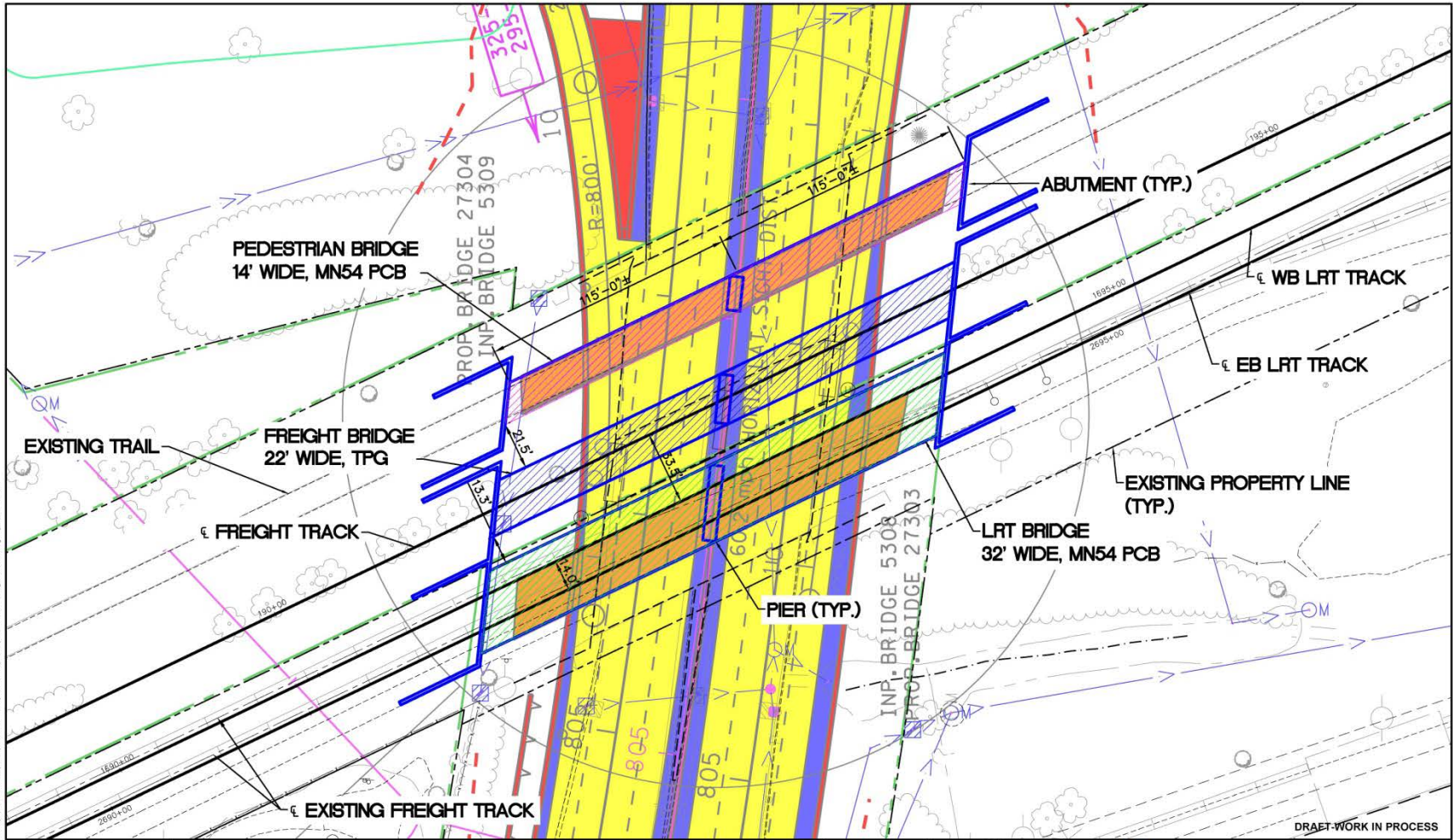


Kimley-Horn and Associates, Inc.



Sep. 03. 2013 01:27 pm V:\3300_PEC-C\FCAD\SEGMENT EXHIBITS\01A\12-WOODDALE STATION.dwg By: Ghilini

TI #15: TH 100 Crossing

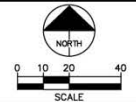


DRAFT-WORK IN PROCESS



SOUTHWEST LIGHT RAIL
T.H. 100 BRIDGE EXHIBIT
CO-LOCATION

IRT #15
Rev 1
05/21/2013

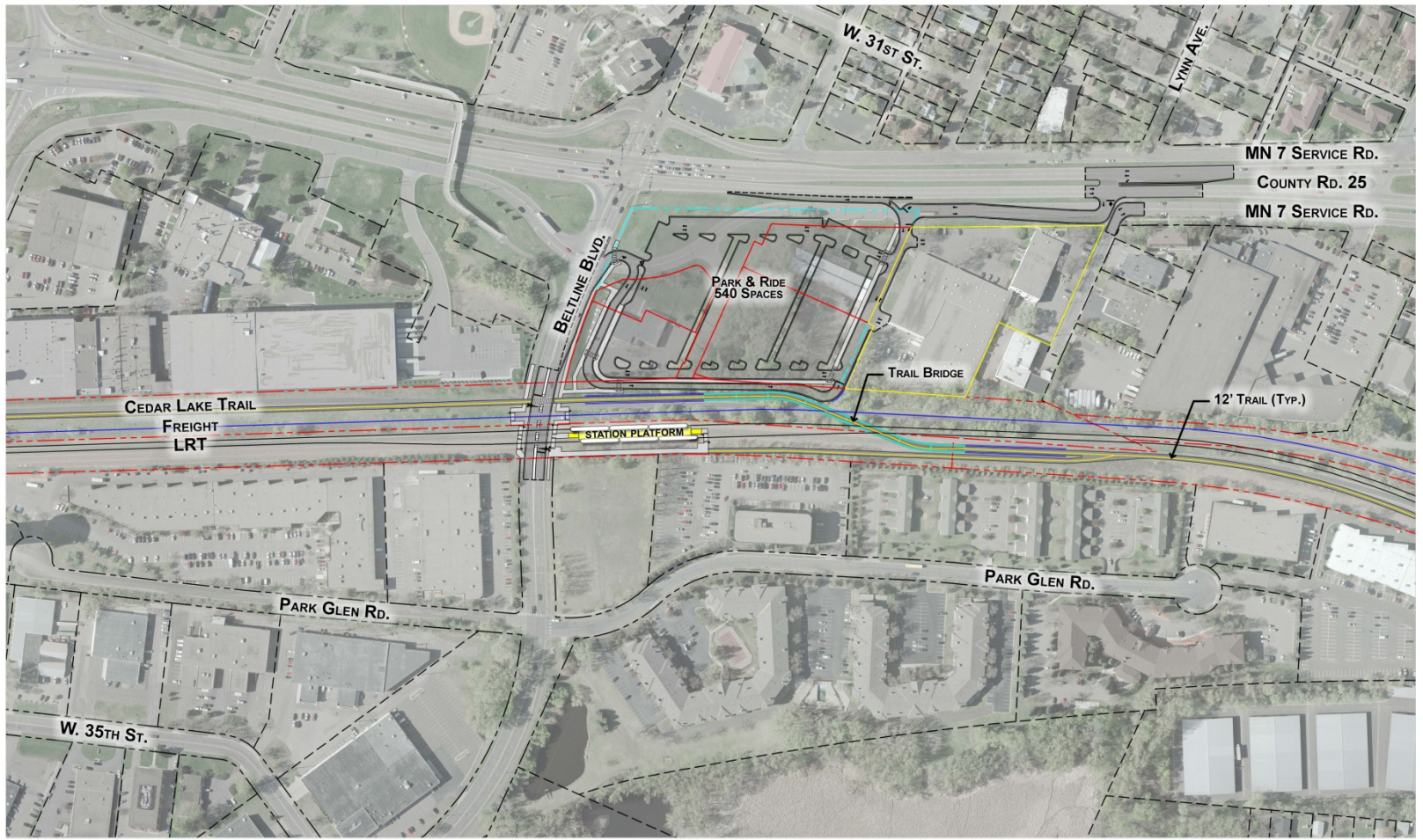


Kimley-Horn and Associates, Inc.



May, 20, 2013 08:28 am V:\3300_PFC-CAD\SEGMENT EXHIBITS\T.H. 100 Bridge-CO-LOC. By: BanderCC

TI #16: Beltline Station



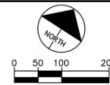
DRAFT-WORK IN PROCESS

File: 02_2013_11114.dwg V:\1300_PFC\LOAD\PROJECT FILES\STATIONS\ON\12-BELTLINE STATION - COLOC - 6.dwg By: dmh



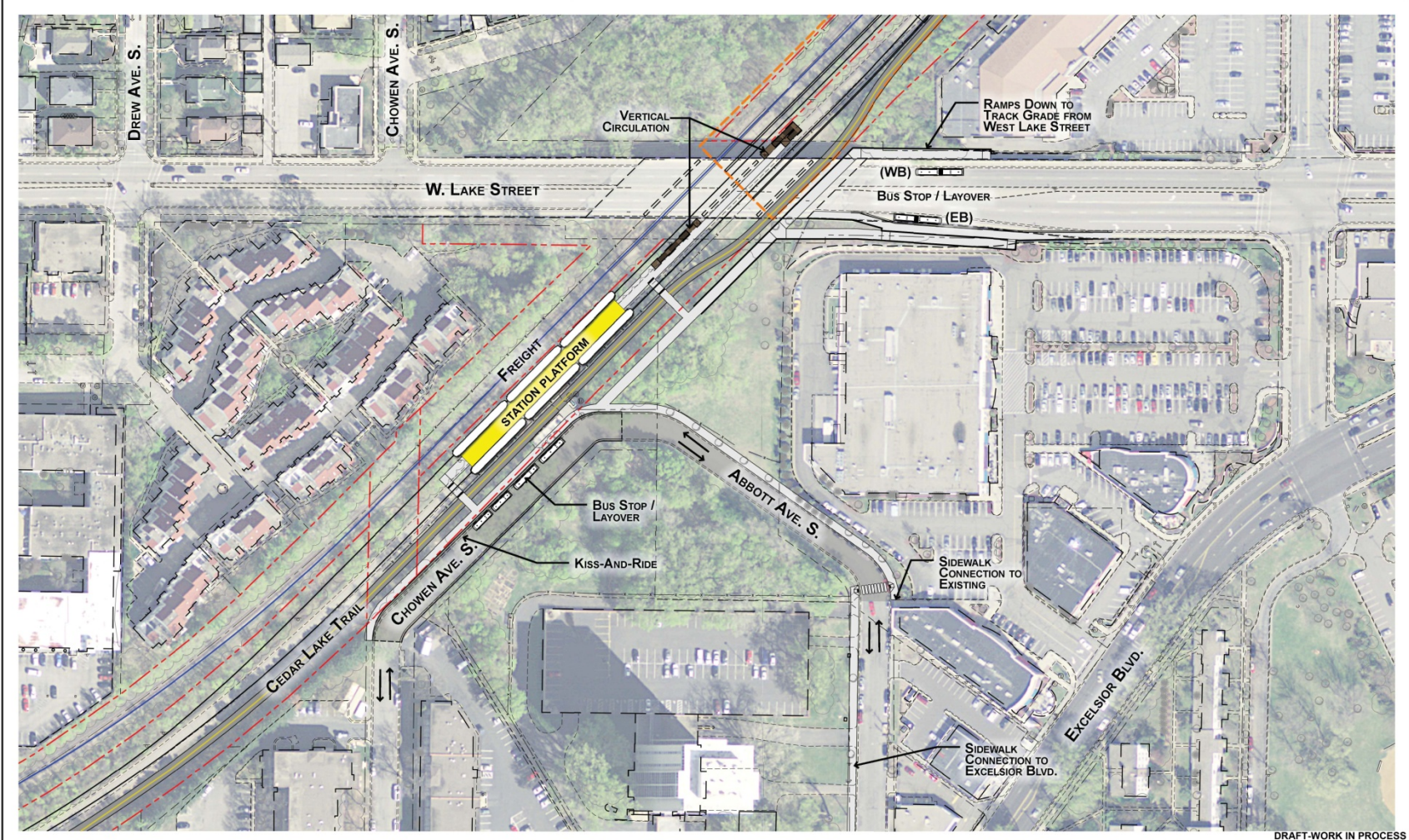
SOUTHWEST LIGHT RAIL
ST. LOUIS PARK - BELTLINE STATION
CO-LOCATION

IRT #16
Rev 2
09/03/2013



Kimley-Horn and Associates, Inc.

TI #17: West Lake Station

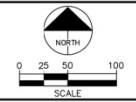


DRAFT-WORK IN PROCESS



SOUTHWEST LIGHT RAIL
 MINNEAPOLIS - WEST LAKE STREET STATION
 SHALLOW TUNNEL

IRT #17
 Rev 0
 08/27/2013



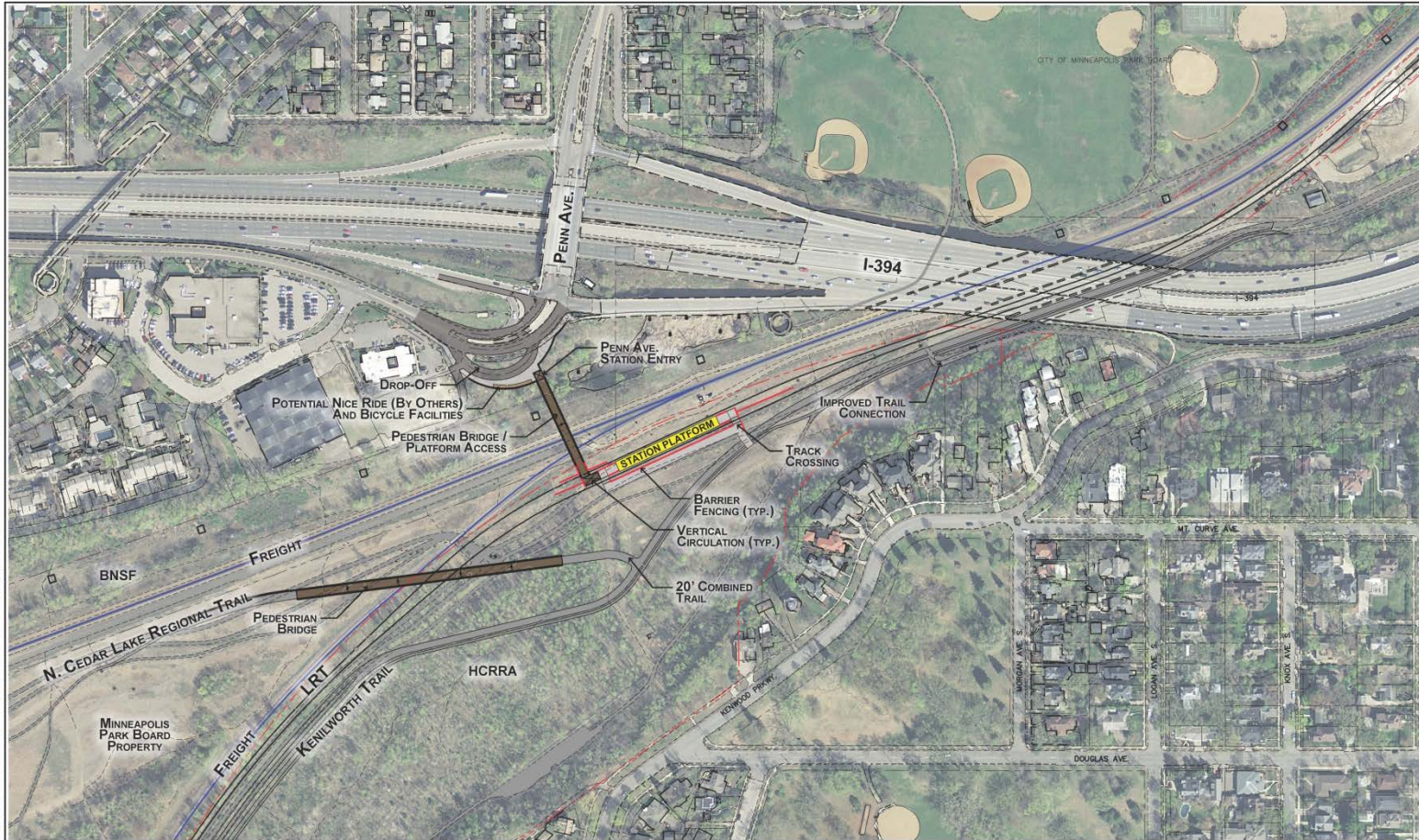
Kimley-Horn and Associates, Inc.



TI #18: Kenilworth Corridor

See TI #21 Freight Rail

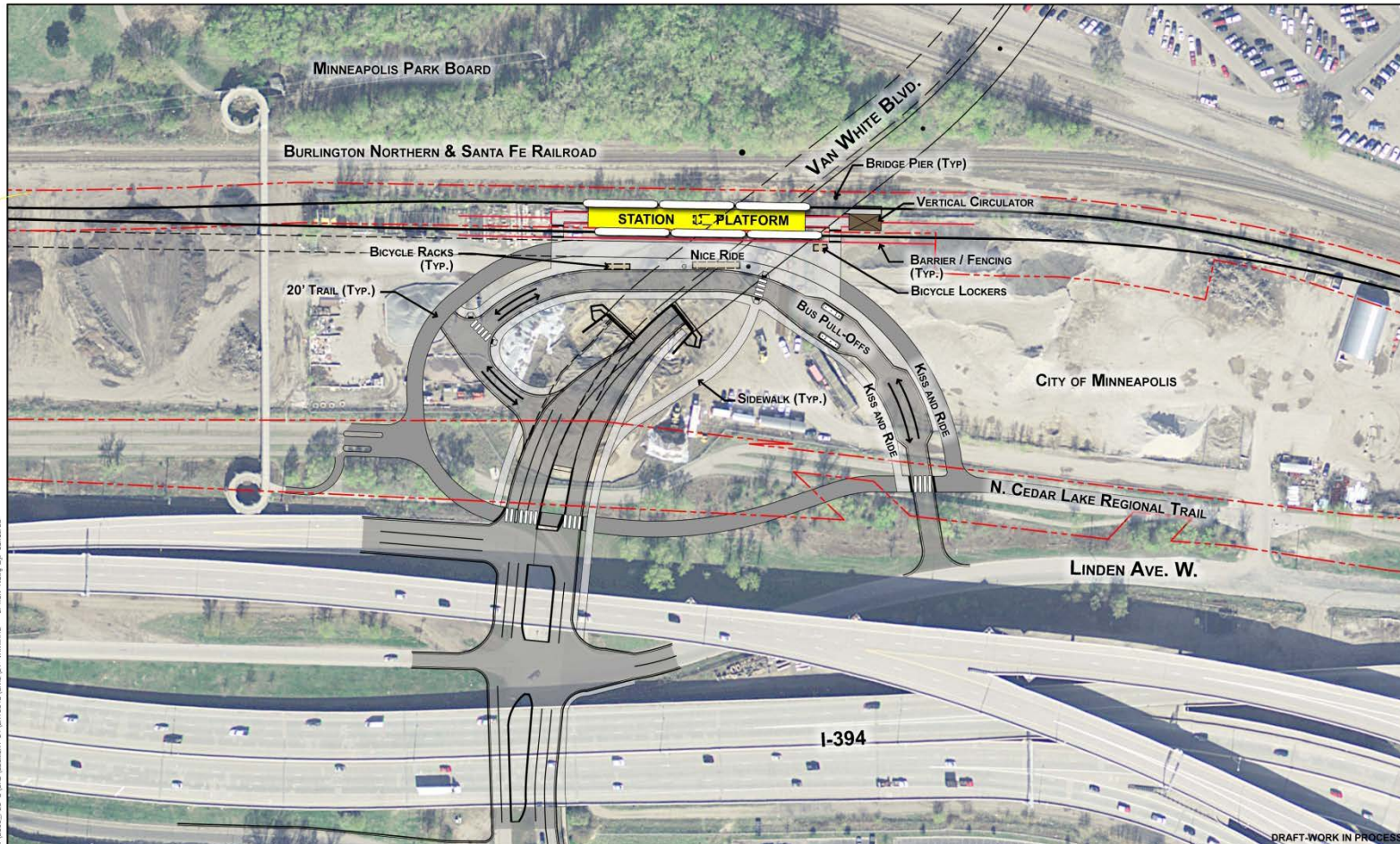
TI #19: Bassett Creek Valley Corridor – Penn Station



DRAFT-WORK IN PROCESS

	<p align="center">SOUTHWEST LIGHT RAIL MINNEAPOLIS - PENN AVENUE STATION CO-LOCATION</p>	<p>IRT #19 Rev 1 05/07/2013</p>		
--	---	---	--	--

TI #19: Bassett Creek Valley Corridor – Van White Station

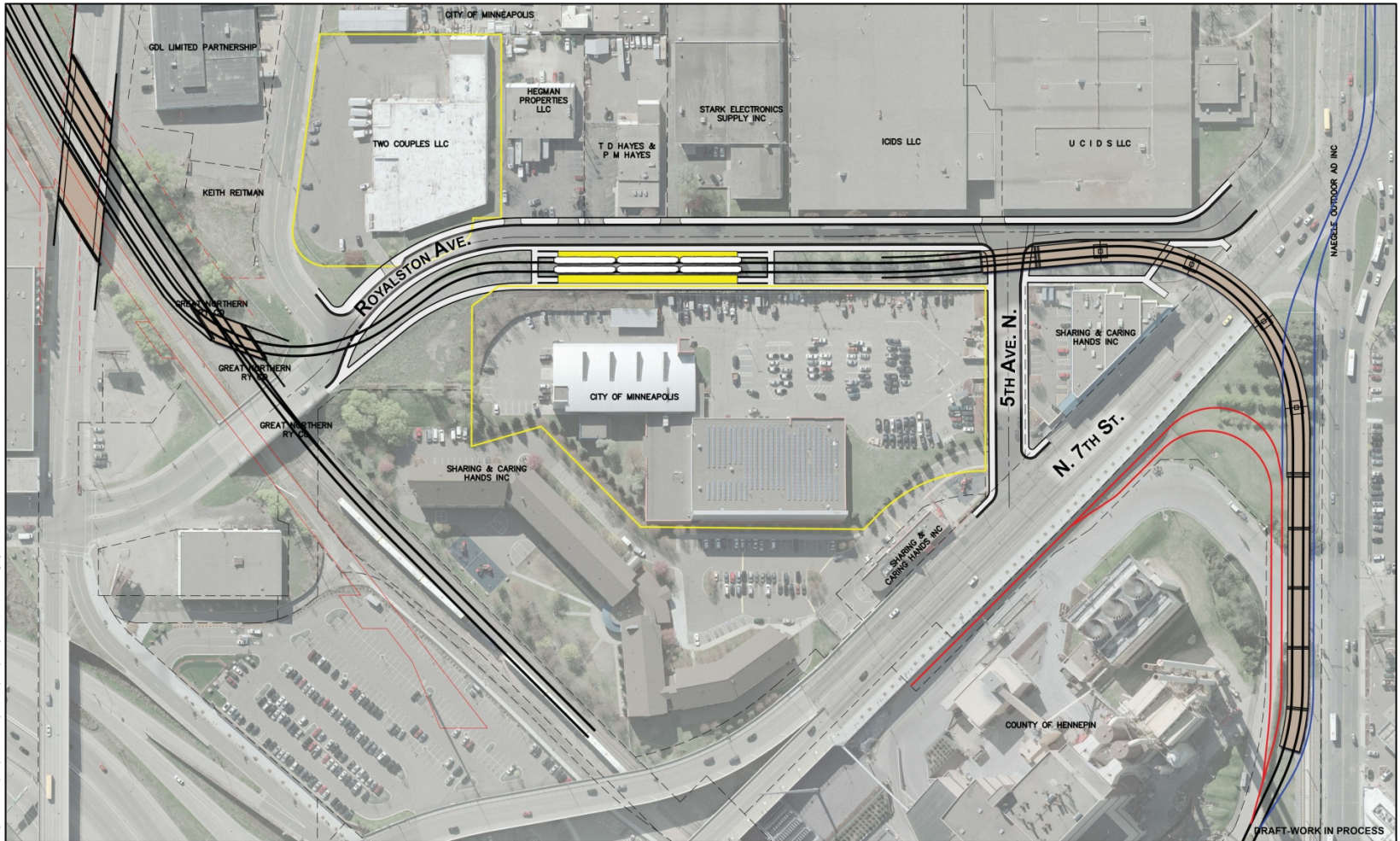


04/17/2013 08:18 AM \\S:\000_PRC-EVALUATION\BASSETT_CREEK_VALLEY_CORRIDOR_VAN_WHITE - 010101 - 7.dwg By: baw/ccc

	<p>SOUTHWEST LIGHT RAIL MINNEAPOLIS - VAN WHITE STATION - 7</p>	<p>IRT #19 Rev 1 05/21/2013</p>			
--	--	---	--	--	--

DRAFT - WORK IN PROGRESS

TI #20: Royalston Station

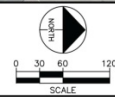



Aug. 14, 2013 12:18 pm V:\33001_PEG-E\04\SEGMENT 4\LA\04015\041_V4-Royalston-East-Shift.dwg By: dcaudem



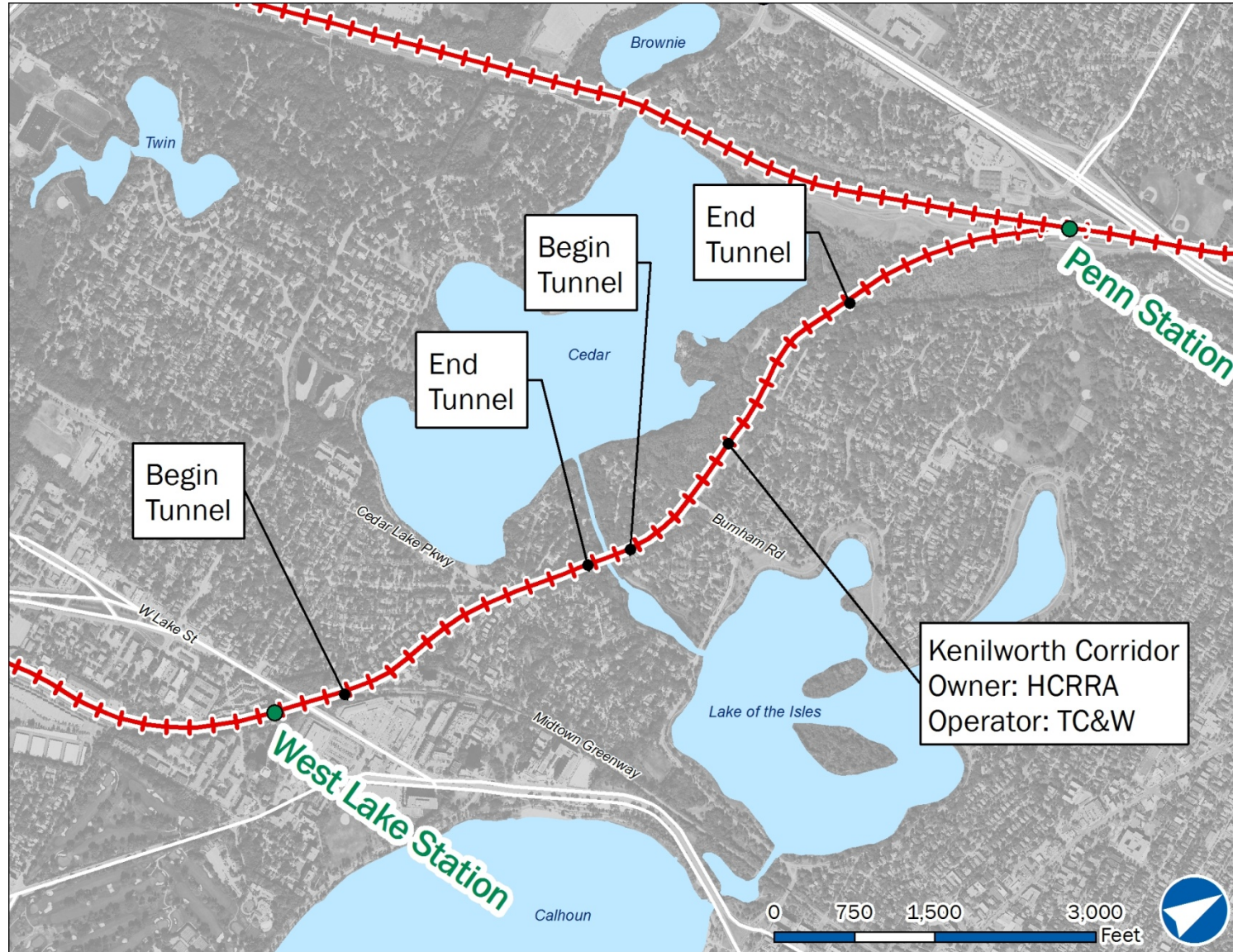
SOUTHWEST LIGHT RAIL
MINNEAPOLIS - ROYALSTON 3B SHIFT

IRT #20
Rev 2
08/13/2013

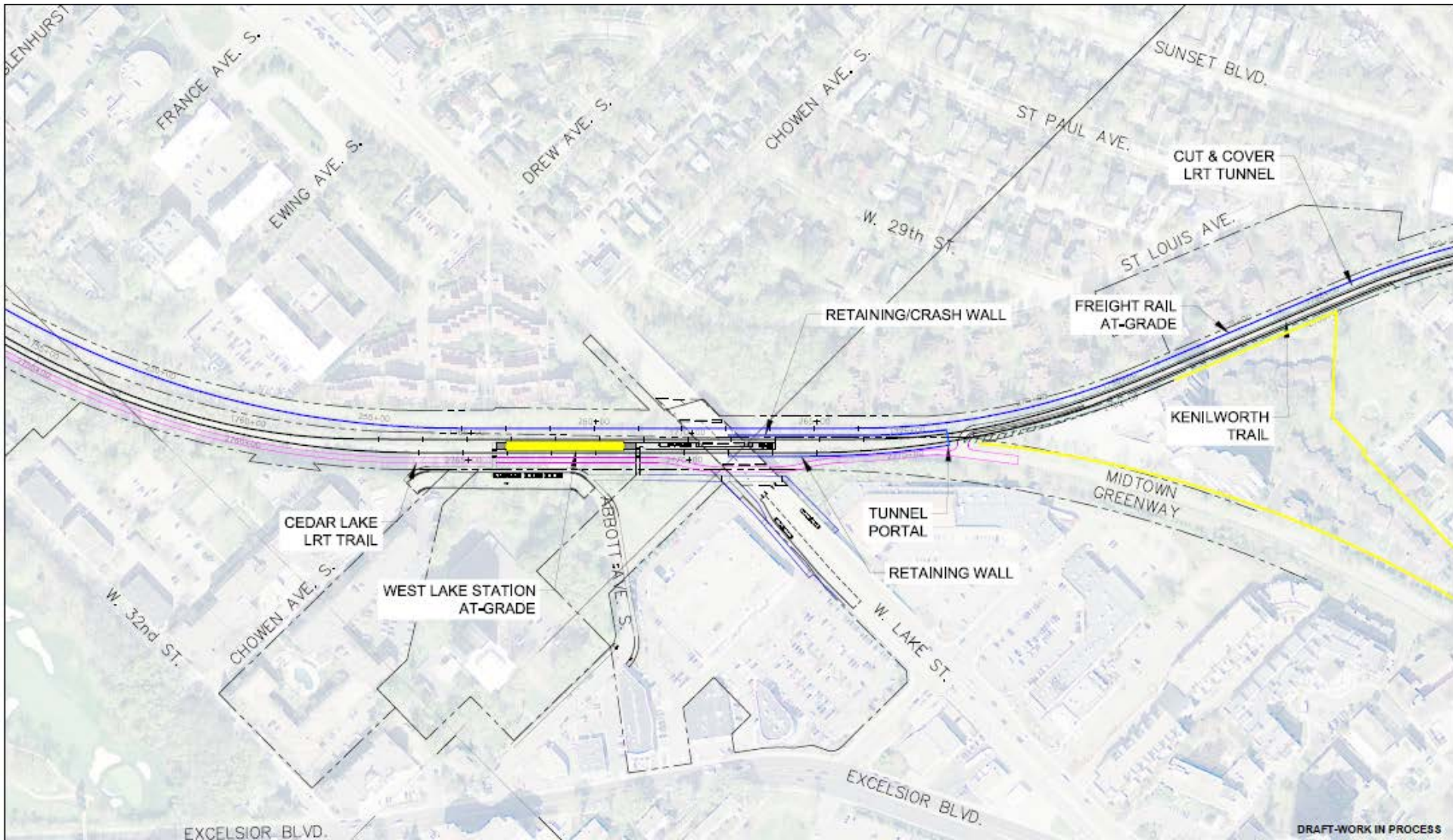


 Kimley-Horn and Associates, Inc.

TI #21: Kenilworth Shallow LRT Tunnel



TI #21: Kenilworth Shallow LRT Tunnel

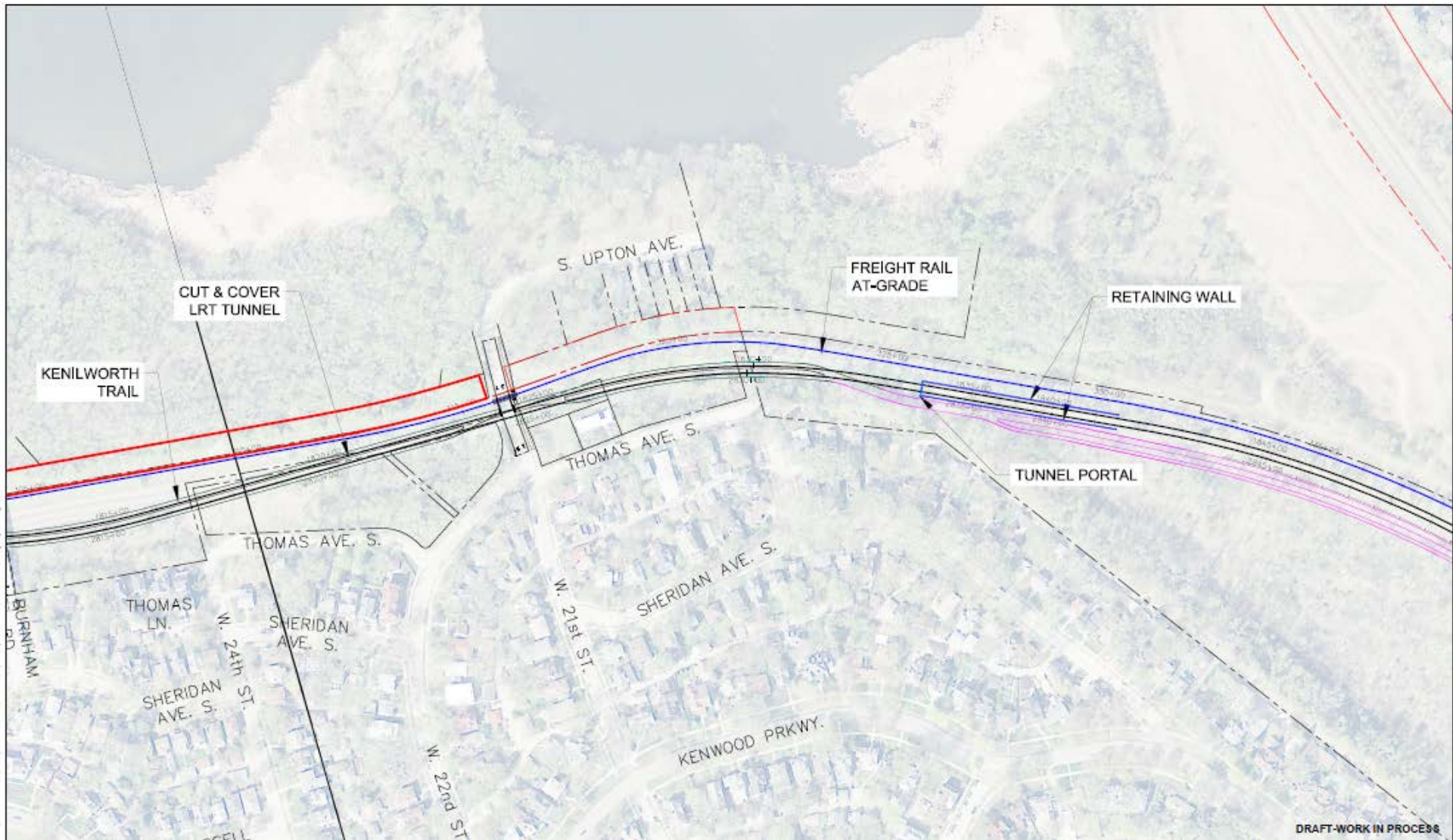


TI #21: Kenilworth Shallow LRT Tunnel

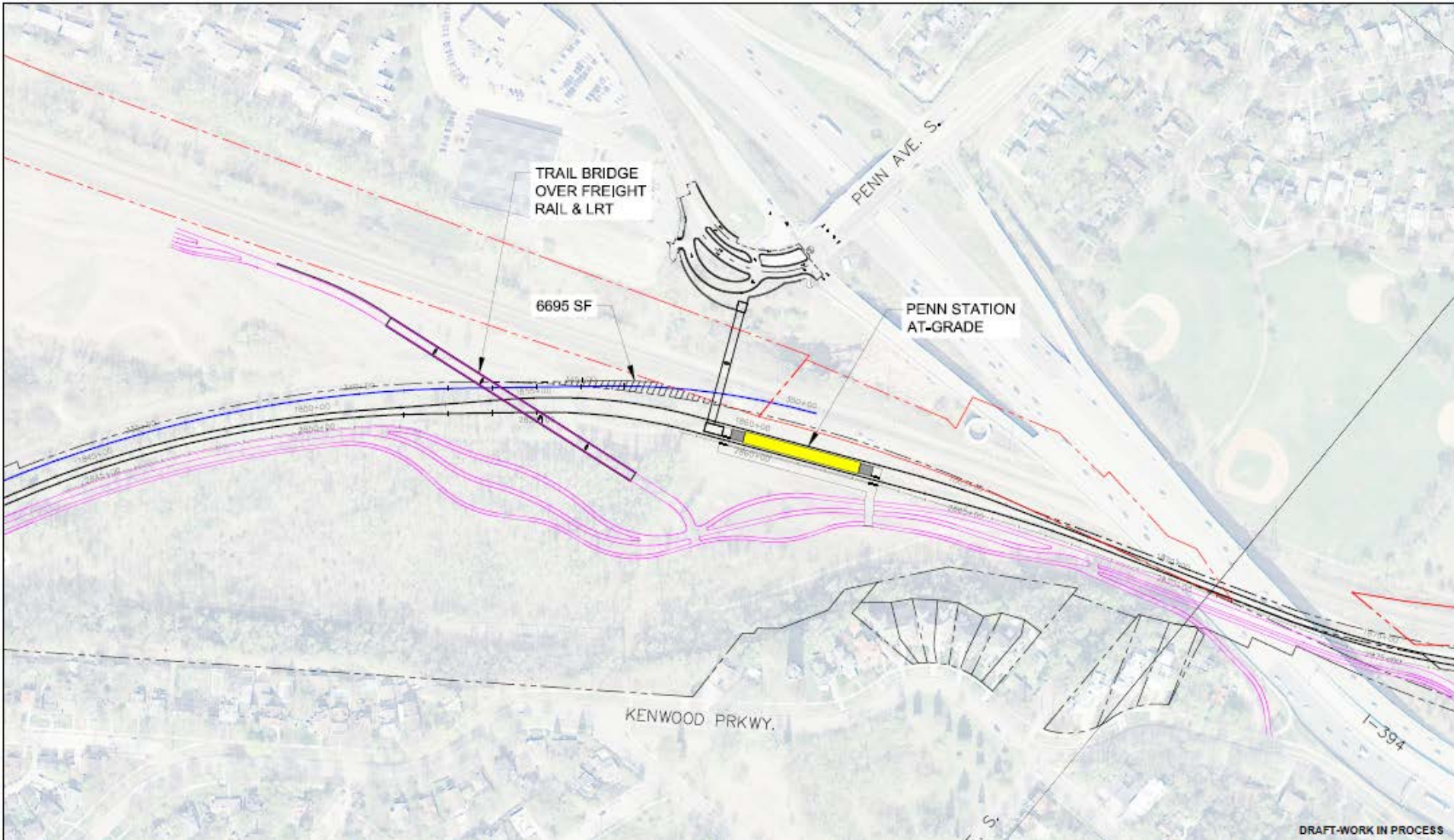


DRAFT-WORK IN PROCESS

TI #21: Kenilworth Shallow LRT Tunnel



TI #21: Kenilworth Shallow LRT Tunnel



DRAFT-WORK IN PROCESS

More Information

Online:

www.SWLRT.org

Email:

SWLRT@metrotransit.org

Twitter:

www.twitter.com/southwestlrt

