

## ENVIRONMENTAL SERVICES:

# CLEAN WATER FOR FUTURE GENERATIONS



TENZIN  
DOLKAR  
DISTRICT: 15

Everyone deserves clean, accessible water. With nearly every home, business, and school connected to one of our water resource recovery facilities, we partner with state and federal agencies, local governments, watershed organizations, interest groups, and residents to make the water in the region affordable and safe. After all, we all share responsibility to protect and conserve this rich, natural resource.



### [ DISTRICT FACTS ]

# \$250.16M

infrastructure investments since 1970

# \$1.55M

 total grants have been awarded for wastewater and water related projects

## \$1.39M

municipal inflow and infiltration grants

## \$8.4k

private inflow and infiltration grants

## \$156.95k

water efficiency grants

# \$714M

planned capital improvements between 2024 and 2029

### [ REGIONAL FACTS ]

**250+ million** gallons of wastewater treated daily

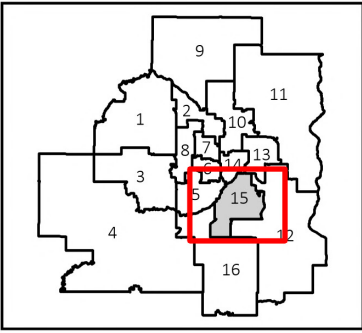
**2.8 million** people served in 111 communities

**634 miles** of sewer pipes

**9** water resource recovery facilities

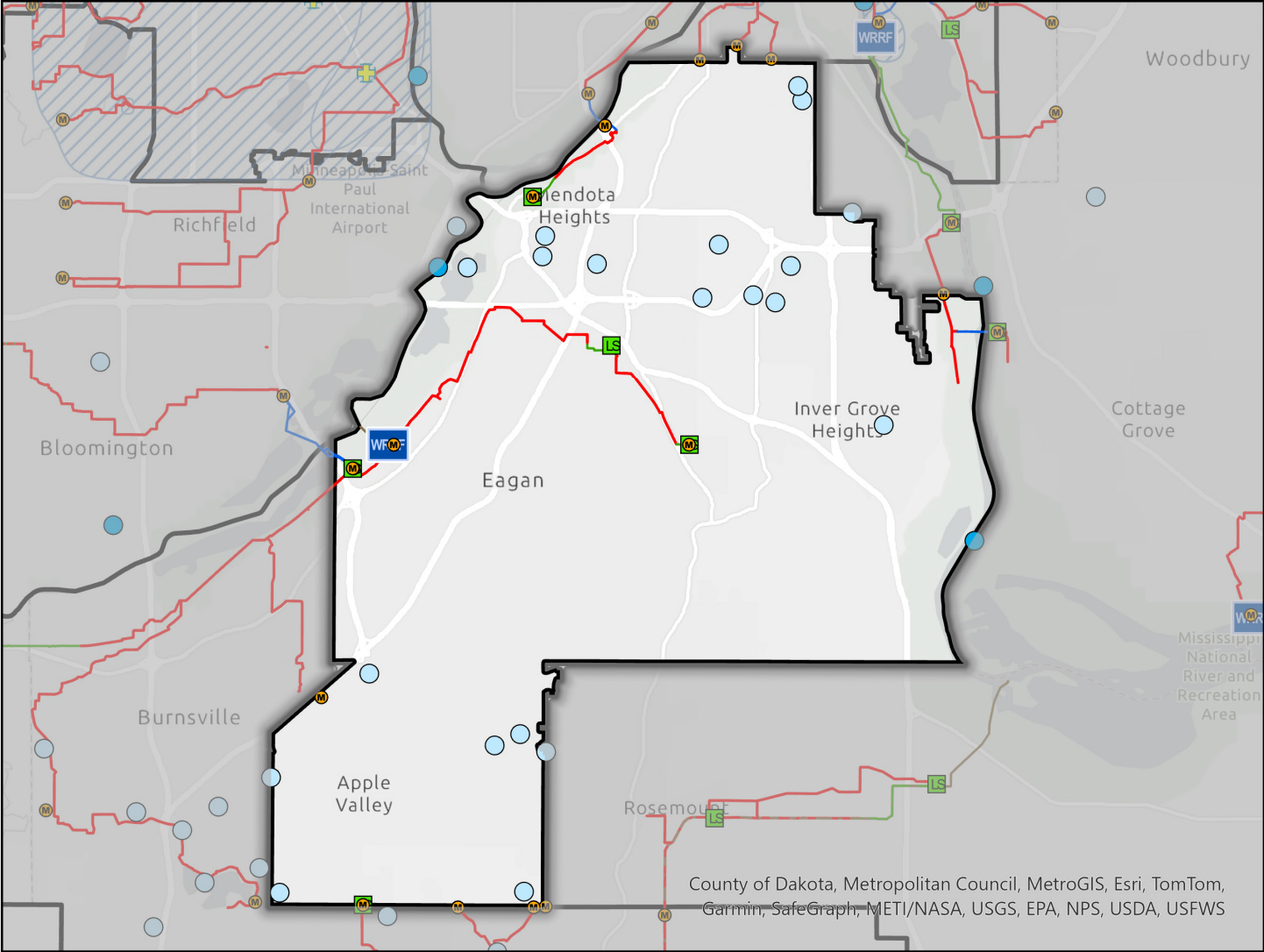


\*All data listed are detailed estimates and include investments that span multiple districts for 2023 or through 2023. As such, district investments may be counted more than once due to our desire to inclusively identify impacts on specific districts. Data related to district investments cannot be combined without significant duplication.

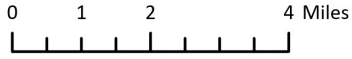


# REGIONAL RESOURCE RECOVERY FACILITIES AND WATER QUALITY MONITORING SITES

METROPOLITAN COUNCIL DISTRICT 15



County of Dakota, Metropolitan Council, MetroGIS, Esri, TomTom, Garmin, SafeGraph, METI/NASA, USGS, EPA, NPS, USDA, USFWS



### Monitoring Sites

- River and Stream Monitoring Sites
- Staff & Community Lake Monitoring Sites

### Infrastructure

- Meters
- Lift Stations
- + Emergency Relief Structures
- Liquid Waste Hauler Disposal Sites
- WRRF Water Resource Recovery Facilities
- Current Capital Improvement Program Boundaries

### Interceptors

- Gravity
- Forcemain
- Siphon
- Effluent

## HOUSING:

# SAFE, QUALITY, AFFORDABLE HOUSING FOR ALL



TENZIN  
**DOLKAR**  
DISTRICT: **15**

Everyone needs a place to call home. With housing in high demand, the Met Council's Housing and Redevelopment Authority – or Metro HRA – partners with other public agencies and non-profit organizations to make stable housing more affordable and accessible. In fact, the Metro HRA is the largest provider of tenant-based rent subsidies in Minnesota. We provide rent assistance to about 20,000 people across the seven-county metro region, so they can afford safe, clean, and quality housing on the open market, while infusing federal dollars into the local economy.



## [ DISTRICT FACTS ]

**Provides rental assistance benefits to 1 low-income family, including:**

**0**

children

**0**

elderly

**1**

person with disabilities

**0**

people experiencing homelessness at admission

**\$9k**

subsidy funding investment

Metro HRA serves much of the Twin Cities region. In addition, our partners at the Dakota County Community Development Agency help families, seniors, and people with disabilities in District 15 find affordable housing. A map showing service areas is featured on the back page of this document.

## [ REGIONAL FACTS ]

Administers nine federal and state rent assistance programs:

**Awards \$83 million** annually

**Benefits 8,600+** households annually

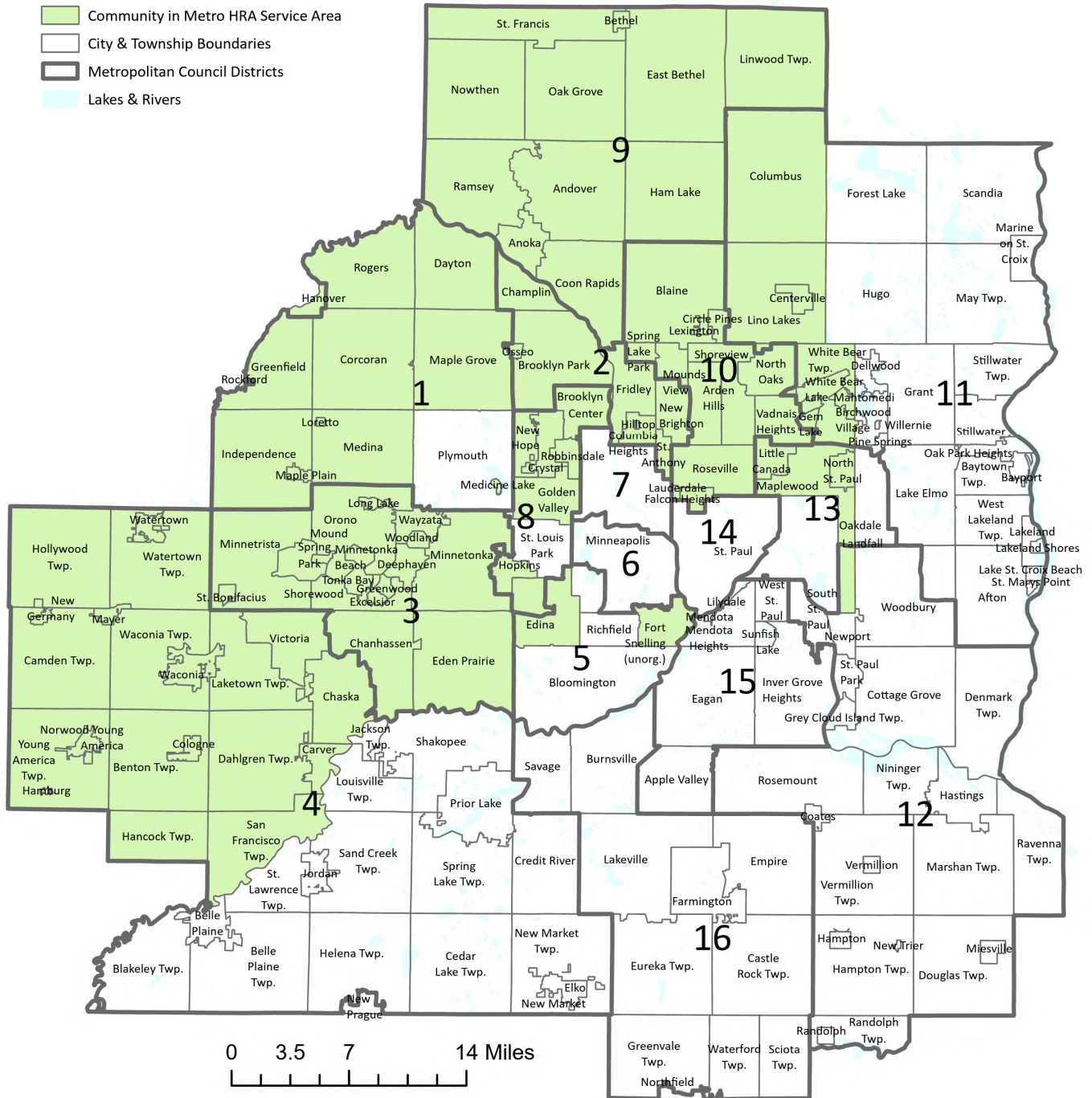
**Created 18,660+** affordable housing units



\*All data listed are detailed estimates and include investments that span multiple districts for 2023 or through 2023. As such, district investments may be counted more than once due to our desire to inclusively identify impacts on specific districts. Data related to district investments cannot be combined without significant duplication.

# METRO HRA PARTICIPATING COMMUNITIES

## METROPOLITAN COUNCIL DISTRICT 15



For some programs, the Metro HRA service jurisdiction is expanded.

# LIVABLE COMMUNITIES ACT (LCA): BUILDING STRONGER COMMUNITIES



TENZIN  
**DOLKAR**  
DISTRICT: **15**

Livable Communities Act (LCA) grants connect jobs, housing, and regional amenities to help communities meet their planning and development goals, add more housing choices, and improve living wages for a more equitable region. With LCA funding, participating cities and townships can leverage private investment, attract businesses to raise the tax base, create jobs, and provide critically needed affordable housing.



## [ DISTRICT FACTS ]

# 30

grants awarded via the following programs:

- Livable Communities Demonstration Account (LCDA)
- Local Housing Incentives Account (LHIA)
- Tax Base Revitalization Account (TBRA)
- Transit-Oriented Development (TOD)

## [ REGIONAL FACTS ]

**Awarded 1,400+** grants since program's inception in 1996

**\$530+ million** grant awards

**9** unique grant programs

# \$12.26M

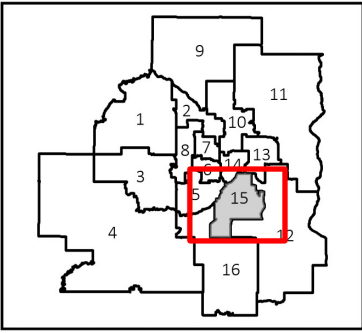
in grants awarded since 1996



Learn more about LCA grants at [metro council.org/lcagrants](https://metro council.org/lcagrants)

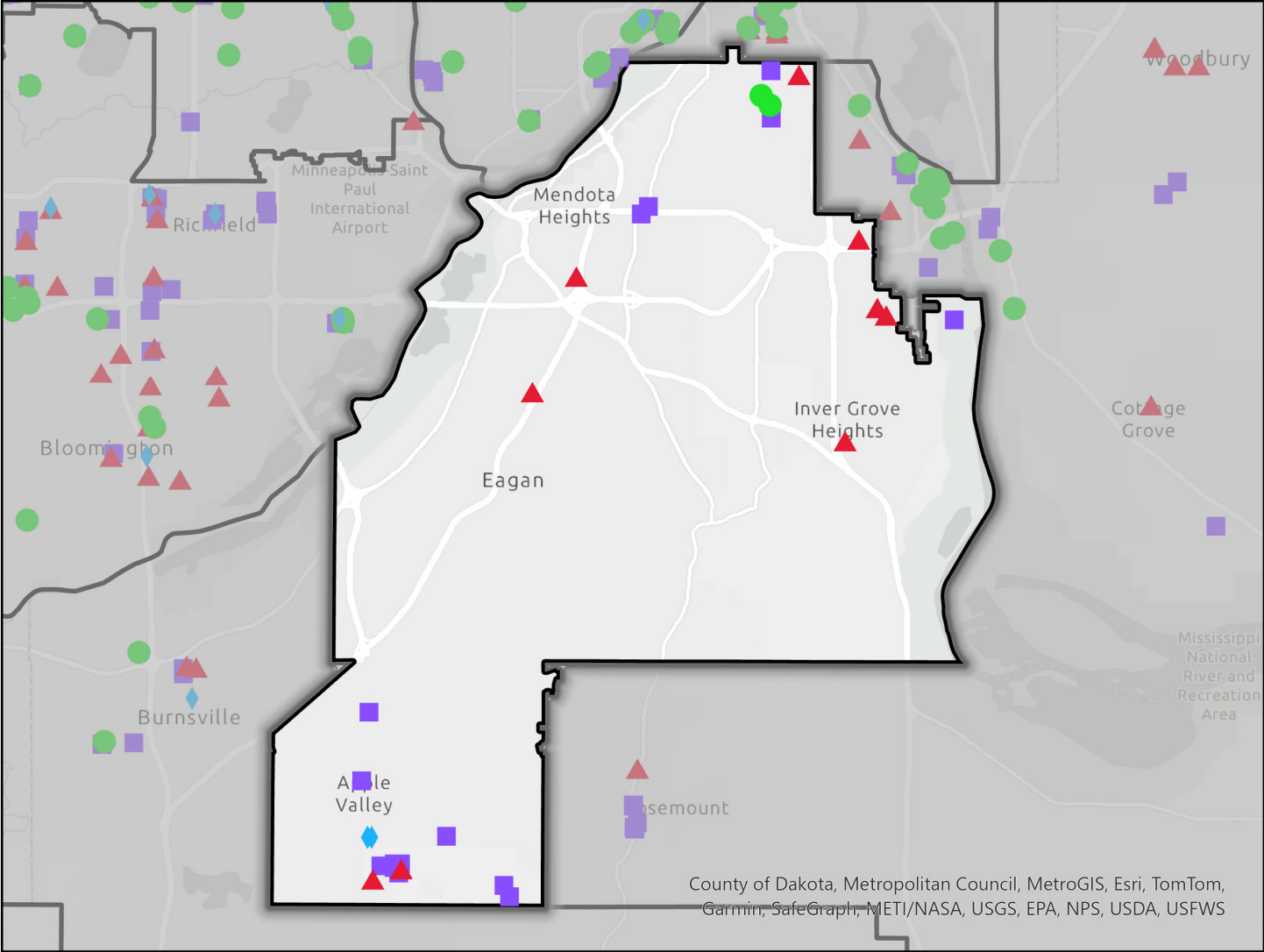


\*All data listed are detailed estimates and include investments that span multiple districts for 2023 or through 2023. As such, district investments may be counted more than once due to our desire to inclusively identify impacts on specific districts. Data related to district investments cannot be combined without significant duplication.

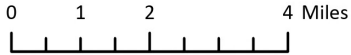


# LIVABLE COMMUNITIES GRANTS

METROPOLITAN COUNCIL DISTRICT 15



County of Dakota, Metropolitan Council, MetroGIS, Esri, TomTom, Garmin, SafeGraph, METI/NASA, USGS, EPA, NPS, USDA, USFWS



Livable Communities Grant Awards

- Livable Communities Demonstration Account (LCDA)
- ▲ Local Housing Incentives Account (LHIA)
- Tax Base Revitalization Account (TBRA)
- ◆ Transit - Oriented Development (TOD)

## REGIONAL PARKS AND TRAILS:

# NATURE IMPROVES OUR COLLECTIVE WELL-BEING



TENZIN  
**DOLKAR**  
DISTRICT: **15**

The Twin Cities region ranks high in national livability rankings – in large part because of our Regional Parks and Trails System. The system showcases the region’s unique landscapes while providing world-class, year-round recreation. The Met Council partners with a wide range of stakeholders, including residents and the ten regional park implementing agencies, to develop policies that help expand ecological benefits, build resiliency, and reduce climate change impacts for our regional parks, trails, park reserves, special features, and more. Last year, regional parks and trails welcomed nearly twice as many visitors as the Mall of America.



### [ DISTRICT FACTS ]

**\$33.94M**

investments since 2009

**9**

open and planned regional parks and trails

**2,301**

acres of regional parks

**47**

regional trail miles

**1,972,708**

estimated visits annually

### [ REGIONAL FACTS ]

**10** park partner agencies

**58** regional parks and park reserves

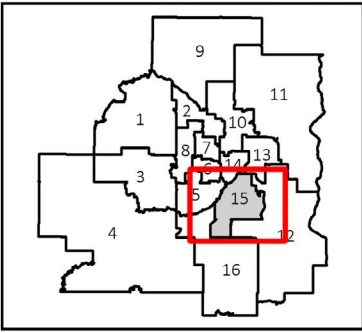
**65,339** acres of land protected

**487** miles of trails open to the public

**8** special features, including Como Park Zoo, Gale Woods Farm, and Square Lake

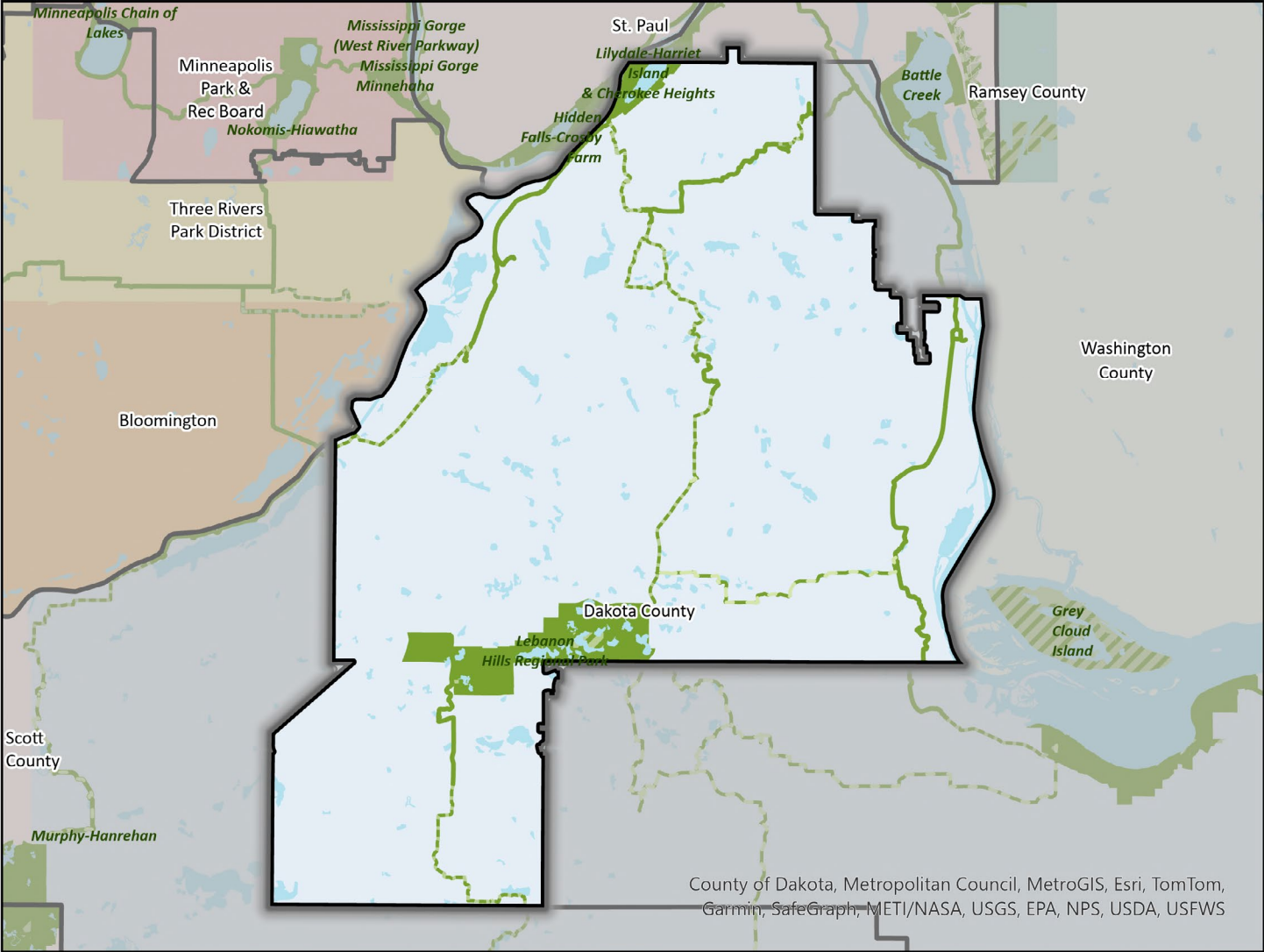
**\$1.25 billion** investment over 50 years

**69.4 million** estimated visits in 2023



# REGIONAL PARKS SYSTEM

## METROPOLITAN COUNCIL DISTRICT 15



County of Dakota, Metropolitan Council, MetroGIS, Esri, TomTom, Garmin, SafeGraph, METI/NASA, USGS, EPA, NPS, USDA, USFWS

### Park Operating Agencies

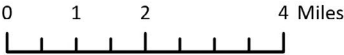
- Anoka County
- Bloomington
- Carver County
- Dakota County
- Minneapolis
- Ramsey County
- Scott County
- St. Paul
- Three Rivers Park District
- Washington County

### Regional Parks & Trails Administrative Boundaries

- Regional Park (Open to the Public)
- Regional Park (Not Open to the Public)
- Planned Park (Not Open to the Public)

### Regional Trails

- Regional Trail (Open to the Public)
- Regional Trail (Not Open to the Public)
- Planned Regional Trail (Not Open to the Public)
- Lakes and Rivers





## TRANSPORTATION:

# MOVE OUR REGION FORWARD



TENZIN  
**DOLKAR**  
DISTRICT: **15**

Our transportation system is the essential pathway that connects people, communities, and commerce. It grants access to all the places we want to reach – and offers choices for how to get there. The Met Council operates and oversees Metro Transit’s local bus service, express service, bus rapid transit, and light rail as well as the Northstar Commuter rail line. A separate division, Metropolitan Transportation Services (MTS), provides privately contracted services to include regular route service, Metro Mobility for people with disabilities, Metro Move for waiver-eligible recipients, Transit Link (Dial-a-Ride) services for the general public where regular route service is not available, Metro Vanpool for commuters, and Metro Micro on-demand service.



### [ DISTRICT FACTS ]

#### REGULAR BUS SERVICE

**22** routes | **2,213,623** annual rides | **\$44.91M** annual operating costs

#### TRANSIT PROVIDERS

**Metropolitan Council - Metropolitan Transportation Services**  
**Metro Transit**  
**Minnesota Valley Transit Authority**

#### METRO MOBILITY (ADA) RIDES

**117,850**  
rides

#### TRANSIT LINK RIDES

**3,174**  
rides

### [ METRO TRANSIT FACTS ]

**45 million** rides in 2023

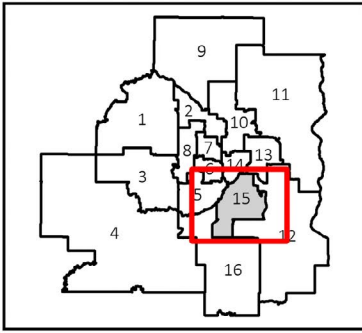
**900** square mile service area

**159** routes

**76** cities served

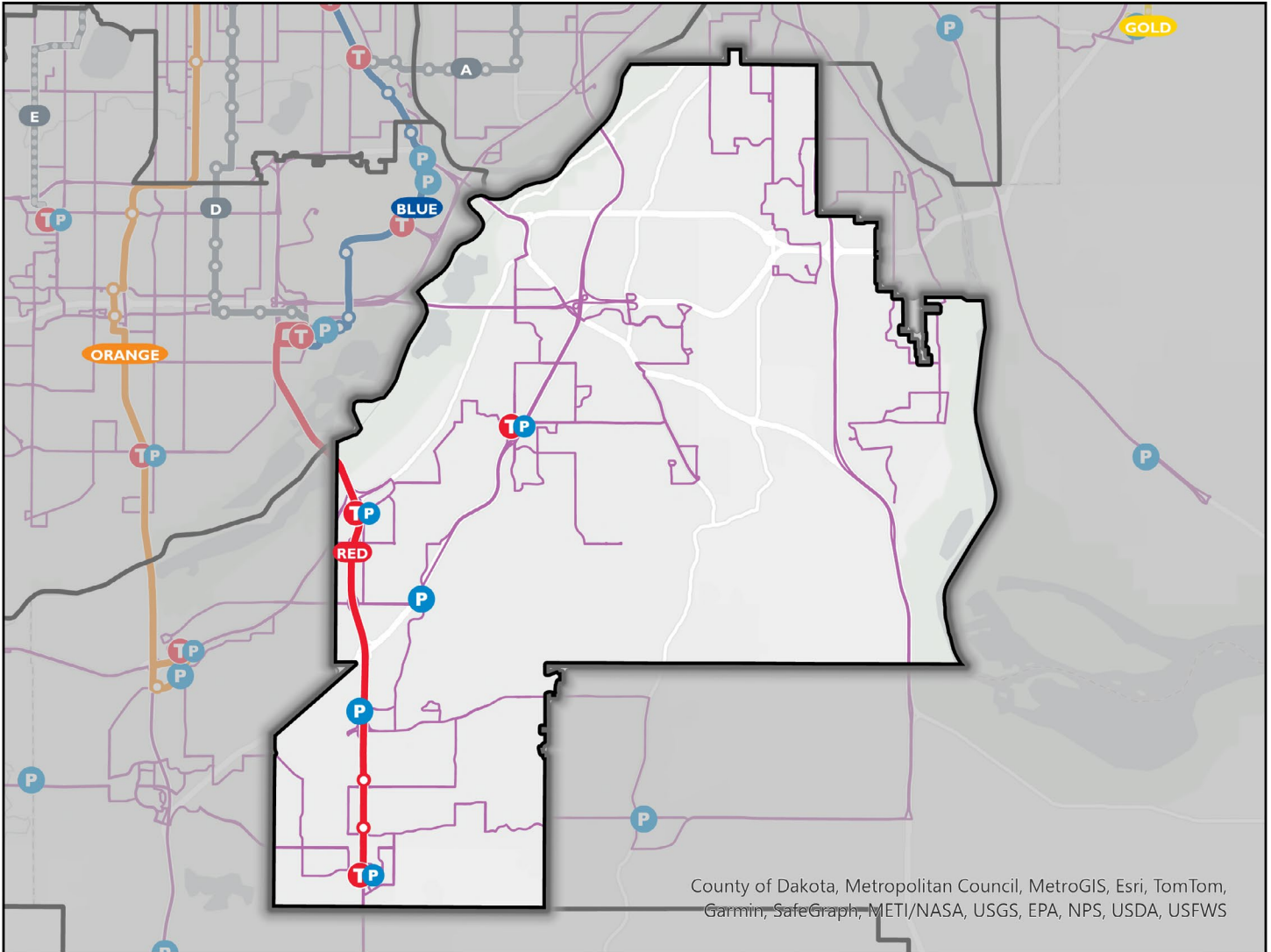


\*All data listed are detailed estimates and include investments that span multiple districts for 2023. As such, district investments may be counted more than once due to our desire to inclusively identify impacts on specific districts. Data related to district investments cannot be combined without significant duplication.



# TRANSIT

## METROPOLITAN COUNCIL DISTRICT 15



### Existing Transitways and Stops

- Blue Line
- Green Line
- Orange Line
- Red Line
- Northstar
- Arterial Bus Rapid Transit
- Shared station

### Transitways Under Construction

- B and E Line
- Green Line Extension
- Gold Line

- Park & Ride
- Transit Center
- Transit Center with Park & Ride
- Regular Route Bus