

2015 SYSTEM STATEMENT

System Statement Issue Date:

2015 SYSTEM STATEMENT FOR ANOKA COUNTY

September 17, 2015

Regional Development Plan Adoption

In May 2014, the Metropolitan Council adopted *Thrive MSP 2040*. Following adoption of *Thrive*, the Council adopted the *2040 Transportation Policy Plan*, the *2040 Regional Parks Policy Plan*, the *2040 Water Resources Policy Plan*, and the *2040 Housing Policy Plan*. The Metropolitan Council is now issuing system statements pursuant to [State statute](#).

Receipt of this system statement and the metropolitan system plans triggers a community's obligation to review and, as necessary, amend its comprehensive plan within the next three years, by the end of 2018. The complete text of *Thrive MSP 2040* as well as complete copies of the recently adopted metropolitan system and policy plans are available for viewing and downloading at <http://www.metrocouncil.org/Communities/Planning.aspx>. Paper copies are available by calling the Council's Data Center at 651-602-1140.

System Statement Definition

Metropolitan system plans are long-range comprehensive plans for the regional systems – transit, highways, and airports; wastewater services; and parks and open space – along with the capital budgets for metropolitan wastewater services, transportation, and regional recreation open space. System statements explain the implications of metropolitan system plans for each individual community in the metropolitan area. They are intended to help communities prepare or update their comprehensive plan, as required by the Metropolitan Land Planning Act:

Within nine months after receiving a system statement for an amendment to a metropolitan system plan, and within three years after receiving a system statement issued in conjunction with the decennial review required under section [473.864, subdivision 2](#), each affected local governmental unit shall review its comprehensive plan to determine if an amendment is necessary to ensure continued conformity with metropolitan system plans. If an amendment is necessary, the governmental unit shall prepare the amendment and submit it to the council for review.

Local comprehensive plans, and amendments thereto, will be reviewed by the Council for conformance to metropolitan system plans, consistency with Council policies, and compatibility with adjacent and affected governmental units. Updated local comprehensive plans are due to the Council for review by December 31, 2018.

What is in this System Statement

The system statement includes information specific to your community, including:

- your community designation or designation(s);
- forecasted population, households, and employment through the year 2040;
- guidance on appropriate densities to ensure that regional services and costly regional infrastructure can be provided as efficiently as possible.

In the following sections, this system statement contains an overview of each of the system plan updates and specific system changes that affect your community. The sections are:

- Transportation, including metropolitan highways, aviation, and transit
- Water Resources, including wastewater, surface water management, and master water supply planning
- Regional parks and trails

Dispute Process

If your community disagrees with elements of this system statement, or has any questions about this system statement, please contact your Sector Representative, Eric Wojchik, at 651-602-1330, to review and discuss potential issues or concerns.

The Council and local government units and districts have usually resolved issues relating to the system statement through discussion.

Request for Hearing

If a local governmental unit and the Council are unable to resolve disagreements over the content of a system statement, the unit or district may, by resolution, request that a hearing be conducted by the Council's Land Use Advisory Committee or by the State Office of Administrative Hearings for the purpose of considering amendments to the system statement. According to Minnesota Statutes section 473.857, the request shall be made by the local governmental unit or school district within 60 days after receipt of the system statement. If no request for a hearing is received by the Council within 60 days, the statement becomes final.

Regional Development Guide

The Council adopted [Thrive MSP 2040](#) as the new regional development guide on May 28, 2014. *Thrive* identifies five outcomes that set the policy direction for the region's system and policy plans. Building on our region's history of effective **stewardship** of our resources, *Thrive* envisions a **prosperous, equitable, and livable** region that is **sustainable** for today and generations to come. The Council is directing its operations, plans, policies, programs, and resources toward achieving this shared long-term vision.



Three principles define the Council's approach to implementing regional policy: **integration**, **collaboration**, and **accountability**. These principles reflect the Council's roles in integrating policy areas, supporting local governments and regional partners, and promoting and implementing the regional vision. The principles define the Council's approach to policy implementation and set expectations for how the Council interacts with local governments.

Thrive also outlines seven land use policies and community designations important for local comprehensive planning updates. The land use policies establish a series of commitments from the Council for local governments and uses community designations to shape development policies for communities. Community designations group jurisdictions with similar characteristics based on Urban or Rural character for the application of regional policies. Together, the land use policies and community designations help to implement the region's vision by setting expectations for development density and the character of development throughout the region.

Community Designation

Community designations group jurisdictions with similar characteristics for the application of regional policies. The Council uses community designations to guide regional growth and development; establish land use expectations including overall development densities and patterns; and outline the respective roles of the Council and individual communities, along with strategies for planning for forecasted growth. If there are discrepancies between the *Thrive MSP 2040* Community Designations Map and the Community Designation map contained herein because of adjustments and refinements that occurred subsequent to the adoption of *Thrive*, communities should follow the specific guidance contained in this System Statement.

Figure 1 shows the Community Designations in Anoka County. Specific strategies for cities and townships in Anoka County can be found the land use policy in *Thrive MSP 2040* and on the Community Page for each of those communities in the [Local Planning Handbook](#).

Forecasts

The Council uses the forecasts developed as part of *Thrive* to plan for regional systems. Communities should base their planning work on these forecasts. Given the nature of long-range forecasts and the planning timeline undertaken by most communities, the Council will maintain on-going dialogue with communities to consider any changes in growth trends or community expectations about growth that may have an impact on regional systems.

The *Thrive* forecasts for population, households, and employment for Anoka County are:

	2010 (actual)	2014 (est.)	2020	2030	2040
Population	330,844	342,612	359,580	399,750	438,820
Households	121,227	125,357	136,260	154,300	171,130
Employment	106,387	117,652	126,660	136,100	145,420

Housing Policy

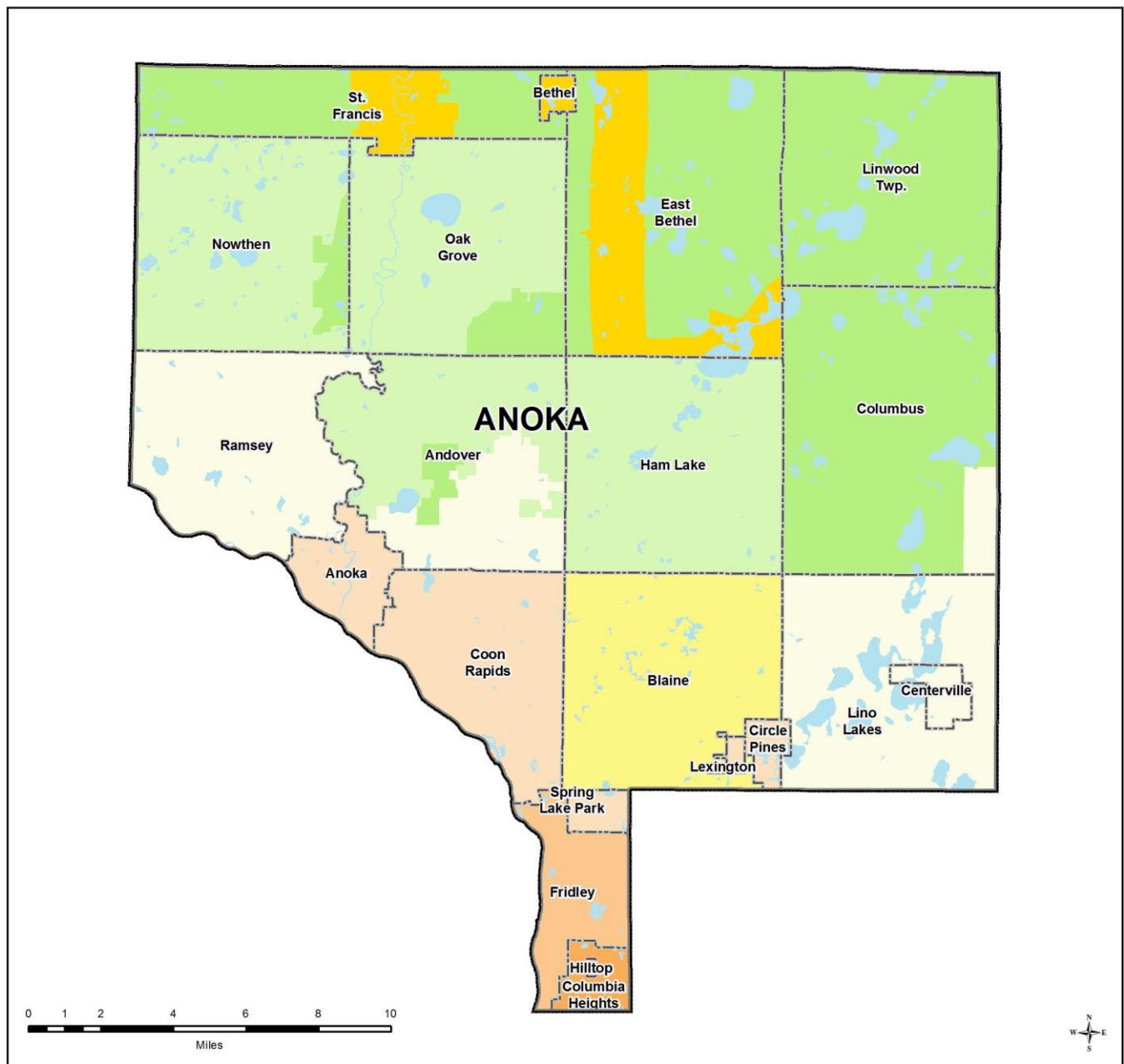
The Council adopted the [Housing Policy Plan](#) on December 10, 2014, and amended the plan on July 8, 2015. The purpose of the plan is to provide leadership and guidance on regional housing needs and challenges and to support *Thrive MSP 2040*. The *Housing Policy Plan* provides an integrated policy framework to address housing challenges greater than any one city or county can tackle alone.

Consistent with state statute (Minn. Stat. 473.859, subd. 2(c) and subd. 4), communities must include a housing element and implementation program in their local comprehensive plans that address existing and projected housing needs.

The Council has determined the regional need for low and moderate income housing for the decade of 2021-2030, including the need by community. Reference Part II and Appendix B of the *Housing Policy Plan* to find details and city-specific projections for communities in your County.


Specific requirements for the housing element and housing implementation programs of local comprehensive plans can be found in the [Local Planning Handbook](#).

Figure 1. Anoka County Community Designations



Community Designations

	Outside Council planning authority		Emerging Suburban Edge
	Agricultural		Suburban Edge
	Rural Residential		Suburban
	Diversified Rural		Urban
	Rural Center		Urban Center

-  County Boundaries
-  City and Township Boundaries

TRANSPORTATION SYSTEM STATEMENT

Anoka County

The *2040 Transportation Policy Plan (TPP)* is the metropolitan system plan for highways, transit, and aviation to which local comprehensive plans must conform. This system statement summarizes significant changes to these three systems, as well as other changes made to the *Transportation Policy Plan* since the last *2030 TPP* was adopted in 2010, and highlights those elements of the system plan that apply specifically to your community. The *TPP* incorporates the policy direction and the new 2040 socio economic forecasts adopted by the Metropolitan Council in the *Thrive MSP 2040*, and extends the planning horizon from 2030 to 2040.

Federal Requirements

The *TPP* must respond to requirements outlined in state statute, as well as federal law, such as some new requirements included in the federal law known as the Moving Ahead for Progress in the 21st Century Act (MAP-21). For instance, metropolitan transportation plans must now be performance based, so the *TPP* now includes goals, objectives, and strategies outlined in chapter 2. In previous versions of the *TPP* the strategies were known as policies; while some are new, the wording of many strategies are similar to the wording of policies in previous plans. Performance measurements for this plan are also discussed in Chapter 12, Federal Requirements.

Federal law requires the long range plan to identify regionally significant transportation investments expected to be made over the next two decades, and to demonstrate that these planned investments can be afforded under the plan's financial assumptions. Both costs and available revenues have changed since the last plan was adopted in 2010, resulting in many changes in the plan. Federal law does allow the plan to provide a vision for how an increased level of transportation revenue might be spent if more resources become available, but the programs or projects identified in this scenario are not considered part of the approved plan.

The *TPP* includes two funding scenarios for the metropolitan highway and transit systems: the "Current Revenue Scenario" and the "Increased Revenue Scenario."

- The **Current Revenue Scenario** represents the fiscally constrained regional transportation plan, which assumes revenues that the region can reasonably expect to be available based on past experience and current laws and allocation formulas.
- The **Increased Revenue Scenario** represents an illustration of what be achieved with a reasonable increase in revenues for transportation.

Under the Metropolitan Land Planning Act, local comprehensive plans are expected to conform to the Current Revenue Scenario, which is the official metropolitan system plan. Potential improvements in the Increased Revenue Scenario can be identified separately in local plans as unfunded proposals. A more detailed description of how to handle the various improvements in this category is included under Other Plan Considerations.

In addition to reviewing this system statement, your community should consult the entire *2040 Transportation Policy Plan* to ensure that your community's local comprehensive plan and plan amendments conform to the metropolitan transportation system plan. Chapter 3, Land Use and Local Planning, has been expanded and all communities should carefully review this chapter. A PDF file of

the entire *2040 Transportation Policy Plan* can be found at the Metropolitan Council's website: [http://www.metrocouncil.org/Transportation/Planning-2/Key-Transportation-Planning-Documents/Transportation-Policy-Plan-\(1\)/The-Adopted-2040-TPP-\(1\).aspx](http://www.metrocouncil.org/Transportation/Planning-2/Key-Transportation-Planning-Documents/Transportation-Policy-Plan-(1)/The-Adopted-2040-TPP-(1).aspx). The format of the plan is slightly different than past *Transportation Policy Plans*. An introductory Overview, Chapter 1: Existing System and Chapter 10: Equity and Environmental Justice have been added to this version of the *TPP*, in addition to the changes noted in the first paragraph. Please note some modifications have been made to the appendices as well.

Key Changes in the 2040 Transportation Policy Plan

Adopted by the Metropolitan Council in January 2015, the revised *2040 Transportation Policy Plan* incorporates the following changes:

Metropolitan Highway System - Chapter 5

The Metropolitan Highway System is made up of principal arterials, shown in Fig 1-1 of the *TPP* and also attached to this system statement. Although no new highways have been added to this system in the *2040 TPP*, the last incomplete segment of this system, TH 610, is now under construction in Maple Grove.

- The *TPP* acknowledges that congestion cannot be eliminated or greatly reduced. The region's mobility efforts will need to focus on managing congestion and working to provide alternatives. The majority of resources available between now and 2040 will be needed for preservation, management and operation of the existing highway system.
- Due to increased costs and decreased revenue expectations, many long-planned major projects to add general purpose highway lanes are not in this fiscally constrained plan. While the preservation, safety, and mobility needs of these corridors are recognized, investments in these corridors will be focused on implementing traffic management strategies, lower cost-high benefit spot mobility improvements, and implementing MnPASS lanes. Some specific projects have been identified in this plan, but funding has primarily been allocated into various investment categories rather than specific projects. The highway projects specifically identified in the Current Revenue Scenario are shown in Figure 5-8 of the *TPP* which is also attached to this system statement.
- Modifications were made to *Appendix D - Functional Classification Criteria*, and *Appendix F – Highway Interchange Requests*. *Appendix C – Project List* is new and contains all of the transit and highway projects that have been identified between 2014 and 2023.

Transit System - Chapter 6

The transit system plan provides an overview of the basic components of transit planning, including demographic factors, transit route and network design factors and urban design factors that support transit usage. Local governments have the primary responsibility for planning transit-supportive land use, through their comprehensive planning, and subdivision and zoning ordinances.

- The *TPP* includes updated Transit Market Areas (shown in *TPP* Figure 6-3, also attached) which reflect 2010 Census information and an updated methodology that better aligns types and levels of transit service to expected demand. These market areas identify the types of transit services that are provided within each area.
- The *TPP* includes limited capital funding for transit expansion and modernization. Opportunities primarily exist through competitive grant programs such as the regional solicitation for US DOT

funding. These opportunities are guided by the strategies in the *TPP* and the various elements of the Transit Investment Plan.

- The *TPP* includes an updated transitway system plan that more clearly articulates which projects can be funded within reasonable revenue expectations through year 2040 (Current Revenue Scenario as shown in *TPP* Figure 6-8, which is also attached). The plan includes five new or expanded METRO lines, three new arterial bus rapid transit lines, and three corridors under study for mode and alignment but identified in the Counties Transit Improvement Board's (CTIB) Phase I Program of Projects. This system was developed in collaboration with CTIB, a major partner in regional transitway expansion.
- The *TPP* does not include operating funding for transit service expansion beyond the existing network of regular route bus, general public dial-a-ride, and Metro Vanpool.
- The Increased Revenue Scenario (shown *TPP* Figure 6-9, which is also attached) illustrates the level of expansion for the bus and support system and transitway system that might be reasonable if additional revenues were made available to accelerate construction of the transitway vision for the region.
- The plan includes updated requirements and considerations for land use planning around the region's transit system. This includes new residential density standards for areas near major regional transit investments and an increased emphasis on proactive land use planning in coordination with the planning of the transit system.

Aviation System - Chapter 9

The Metropolitan Aviation System is comprised of nine airports (shown in Figure 1-9 of the *TPP* and also attached to this system statement) and off-airport navigational aids. There are no new airports or navigational aids that have been added to the system in the *2040 TPP*.

- The *TPP* discusses the regional airport classification system as well as providing an overview of roles and responsibilities in aviation for our regional and national partners. The investment plan includes an overview of funding sources for projects, and an overview of projects proposed for the local airports that will maintain and enhance the regional airport system.
- Modifications were made to *Appendix I – Regional Airspace*, *Appendix J – Metropolitan Airports Commission Capital Investment Review Process*, *Appendix K – Airport Long Term Comprehensive Plans* and *Appendix L – Aviation Land Use Compatibility*.

Other Plan Changes

Regional Bicycle Transportation Network - Chapter 7

The *2040 TPP* encourages the use of bicycles as a mode of transportation. To that end, the *TPP* establishes for the first time a Regional Bicycle Transportation Network (RBTN). The goal of the RBTN is to establish an integrated seamless network of on-street bikeways and off-road trails that complement each other to most effectively improve conditions for bicycle transportation at the regional level. Cities, counties, and parks agencies are encouraged to plan for and implement future bikeways within and along these designated corridors and alignments to support the RBTN vision.

Freight - Chapter 8

Most aspects of freight movement are controlled by the private sector, so unlike other sections of the *TPP*, there is not a specific plan adopted for future public sector investment in freight facilities. However, the discussion of the need for a safe and efficient multimodal freight system has been updated and expanded in the *TPP* to recognize challenges and opportunities for freight movement as well as the future direction of freight by mode. It acknowledges the closure of the Minneapolis Upper Harbor in 2015, leaving St Paul and Shakopee as the region's major barge terminal areas in the future. The plan also acknowledges the increase of trains since 2010 carrying oil from North Dakota on BNSF and CP rail tracks, which is expected to continue into the future. Although railroad trackage in the region was significantly decreased over the last 20 years to "right size" the system after federal deregulation, communities should not expect much additional rail abandonment. Many tracks that appear to be seldom used are owned by the smaller Class III railroads that serve local businesses by providing direct rail connections from manufacturing and warehousing/distribution facilities to the major national railroads. The major Class I railroads are approaching capacity and actually adding tracks in some locations.

System Plan Considerations Affecting Your Community

Anoka County should consult the complete *2040 Transportation Policy Plan* in preparing its local comprehensive plan. In addition, Anoka County should consult *Thrive MSP 2040* and the current version of the Metropolitan Council's *Local Planning Handbook* for specific information needed in its comprehensive plan. Specific system plan considerations affecting Anoka County are detailed below.

Metropolitan Highways

There are several principal arterials located within Anoka County: I-35, I-35W, TH 10, TH 65, TH 169, TH 242, TH 610, and CR 42. The *TPP* includes the following specific regional mobility improvements as shown in *TPP* Figure 5-8: TH 10/Armstrong Boulevard – new interchange and rail grade separation. The *TPP* shows a managed lane system vision for the metro area, although current funding is unlikely to allow construction of all these corridors by 2040. This vision includes the addition of a MnPASS lane along I-35W in your community as a funded project.

Transit System

Anoka County includes the following Transit Market Areas:

Transit Market Area	Market Area Description and Typical Transit Services
Market Area II	Transit Market Area II has high to moderately high population and employment densities and typically has a traditional street grid comparable to Market Area I. Much of Market Area II is also categorized as an Urban Center and it can support many of the same types of fixed-route transit as Market Area I, although usually at lower frequencies or shorter service spans.
Market Area III	Transit Market Area III has moderate density but tends to have a less traditional street grid that can limit the effectiveness of transit. It is typically Urban with large portions of Suburban and Suburban Edge communities. Transit service in this area is primarily commuter express bus service with some fixed-route local service providing basic coverage. General public dial-a-ride services are available where fixed-route service is not viable.

Market Area IV	Transit Market Area IV has lower concentrations of population and employment and a higher rate of auto ownership. It is primarily composed of Suburban Edge and Emerging Suburban Edge communities. This market can support peak-period express bus services if a sufficient concentration of commuters likely to use transit service is located along a corridor. The low-density development and suburban form of development presents challenges to fixed-route transit. General public dial-a-ride services are appropriate in Market Area IV.
Market Area V	Transit Market Area V has very low population and employment densities and tends to be primarily Rural communities and Agricultural uses. General public dial-a-ride service may be appropriate here, but due to the very low-intensity land uses these areas are not well-suited for fixed-route transit service.

Anoka County should identify and map existing transit services and facilities in the local comprehensive plan. Anoka County should also work with transit providers serving their community to identify potential future transit service options and facilities that are consistent with the *TPP* and the applicable Transit Market Areas. Communities can find further maps and guidance for transit planning in the Transportation section of the [Local Planning Handbook](#).

Transitways

Current Revenue Scenario Transitways

Anoka County should acknowledge in your local comprehensive plan the transitway investments planned for your community in the Current Revenue Scenario (*TPP* Figure 6-8). Northstar Commuter Rail currently serves Anoka County.

The county should also identify potential stations along planned transitways (once identified) and adopt guiding land use policies, station-area plans, and associated zoning, infrastructure, and implementation tools that support future growth around transit stations consistent with Chapter 3 - Land Use and Local Planning from the *TPP* and consistent with the project phase of development. Communities can find further guidance for station-area planning in the Transportation section of the [Local Planning Handbook](#) and the *Transit Oriented Development Guide*. The Transportation section of the *Local Planning Handbook* also includes a map of existing, planned, and proposed transitway stations throughout the region and the planning status of these stations that should be reflected in Comprehensive Plans.

Increased Revenue Scenario Transitways

The *TPP* Increased Revenue Scenario shows additional transitway corridors beyond the scope of the plan's adopted and fiscally constrained Transit Investment Plan (the Current Revenue Scenario). These corridors are listed on page 6.63 of the *TPP*, and *TPP* Figure 6-9, which is attached, shows the complete transitway vision for the region.

If Anoka County believes it might be directly impacted by transitways in the Increased Revenue Scenario (for example, because they are participating in transitway corridor studies or feasibility analyses), the transitways may be acknowledged in the Comprehensive Plan. These additional corridors are or will be under study for mode and alignment recommendations, but they are not included in fiscally constrained plan. However, they should be clearly identified as not funded within the currently expected resources for transitways. The Council recognizes the important planning work that goes into a corridor prior to it becoming part of the region's Transit Investment Plan, especially if increased revenues were to become available.

Similar to Current Revenue Scenario Transitways, communities should identify known potential stations along planned transitways and consider guiding land use policies, station area plans, and associated

zoning, infrastructure, and implementation tools that support future growth around transit stations. These policies can also influence station siting in initial planning phases of transitway corridors and influence the competitiveness of a transitway for funding. Communities can find further guidance for station area planning in the Transportation section of the [Local Planning Handbook](#) and the *Transit Oriented Development Guide*.

Aviation

All communities must include an aviation element in the transportation sections of their comprehensive plans. The degree of aviation planning and development considerations that need to be included in the comprehensive plan varies by community. Even those communities not impacted directly by an airport have a responsibility to include airspace protection in their comprehensive plan. The protection element should include potential hazards to air navigation including electronic interference.

Anoka County – Blaine Airport, Forest Lake Airport, and Rice Lake Seaplane Airport are within Anoka County. The long term comprehensive plans (LTCPs) for these airports shown in Appendix K of the 2040 *TPP* have not changed from the LTCPs included in the 2030 *TPP* adopted by the Metropolitan Council in 2010. However, updated LTCPs are anticipated prior to 2018. Communities influenced by these airports should review the LTCPs to assure that the updated comprehensive plans developed by the communities remain consistent with the airport plans. Consult the [Local Planning Handbook](#) for specific comprehensive planning requirements and considerations such as airport zoning, noise and other environmental mitigation, airport development and economic impacts, ground access needs, infrastructure requirements, and general land use compatibility.

Other Plan Considerations

Regional Bicycle Transportation Network

TPP Figure 7-1 shows the RBTN as established for the first time in the 2040 *TPP*. The network consists of a series of prioritized Tier 1 and Tier 2 corridors and dedicated alignments (routes). The process used to develop the RBTN, as well as the general principles and analysis factors used in its development, can be found in the Bicycle and Pedestrian Chapter of the *TPP*.

The RBTN corridors and alignments make up the “trunk arterials” of the overall system of bikeways that connect to regional employment and activity centers. These are not intended to be the only bicycle facilities in the region, and local units should also consider planning for any additional bike facilities desired by their communities. RBTN corridors are shown where more specific alignments within those corridors have not yet been designated, so local governments are encouraged to use their comprehensive planning process to identify suitable alignments within the RBTN corridors for future incorporation into the *TPP*.

In addition, agencies should plan their local on and off-road bikeway networks to connect to the designated Tier 1 and Tier 2 alignments, as well as any new network alignments within RBTN corridors to be proposed in local comprehensive plans. Bikeway projects that complete segments of, or connect to, the RBTN are given priority for federal transportation funds through the Transportation Advisory Board’s biannual regional solicitation.

Figure 7-1 shows that your community currently has one or more RBTN corridors and alignments within its jurisdiction. The Council encourages local governments to incorporate the RBTN map within their local bicycle plan maps to show how the local and regional systems are planned to work together. An on-line interactive RBTN map, which allows communities to view the RBTN links in their community at a much more detailed scale than Figure 7-1, can be found in the Transportation section of the [Local Planning Handbook](#). The handbook also includes best practices, references, and guidance for all local bicycle planning.

A Minor System / Functional Classification

The *TPP* has always recognized the A minor arterial system as an important supplement to the regional highway system, and the Transportation Advisory Board (TAB) continues to maintain the official regional map of these roads. The *2040 TPP* does include an updated functional classification map (Fig. 1-2 in Chapter 1) and a modified *Appendix D - Functional Classification Criteria*. Communities should consult the Local Plan Handbook for more information on functional classification, how to reflect the A minor arterial system in their plan, and how to request functional classification changes if necessary.



Freight

The Council encourages all local governments to plan for freight movement in their communities. Trucks are the major mode of freight movement in the region and across the nation to distribute consumer goods as well as move manufactured goods and commodities, and they operate in every community.

Communities with special freight facilities shown on *TPP* Figure 8-1, Metropolitan Freight System, (attached) should also include those additional modes and facilities in their local plan, and plan for compatible adjacent land uses.

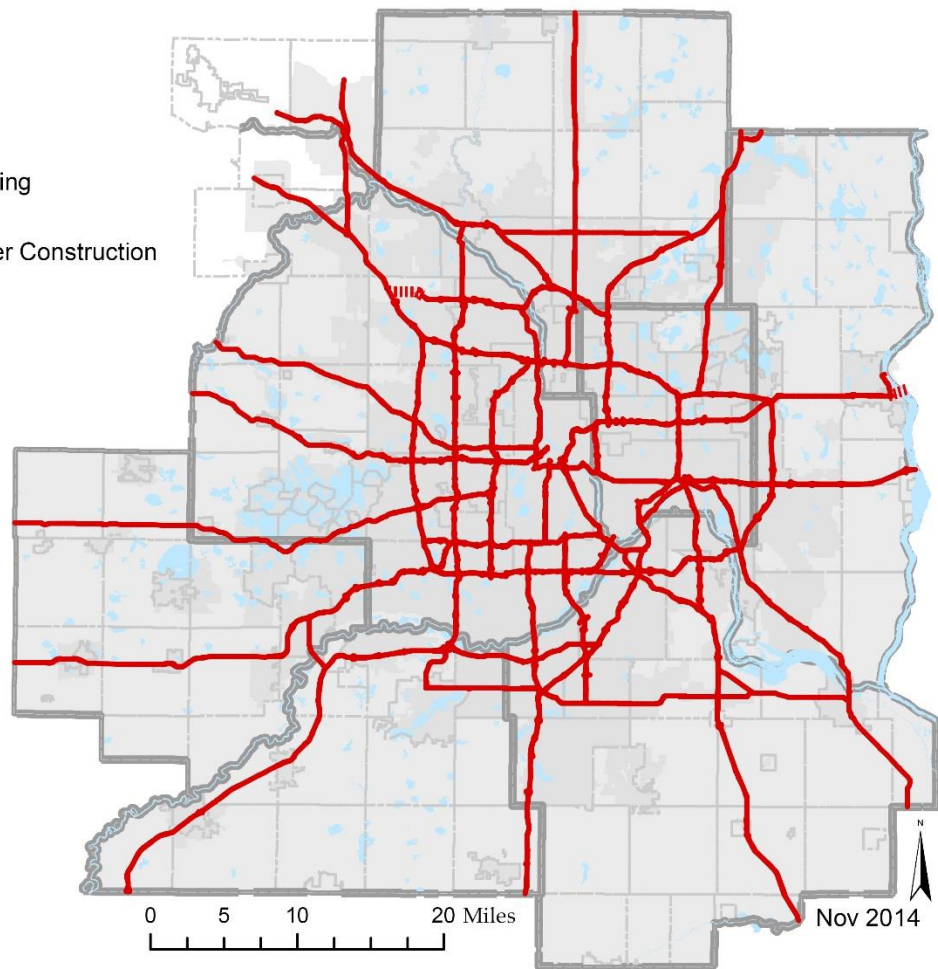
Figure 1-1 of the TPP

Principal Arterials

-  Principal Arterial - Existing
-  Principal Arterial - Under Construction

Reference Items

-  Lakes and Rivers
-  City Boundary
-  County Boundary
-  MUSA 2040 MPO Area



2040 TRANSPORTATION POLICY PLAN | METROPOLITAN COUNCIL

Figure 1-1



Figure 1-2 of the TPP

Functional Class Roads

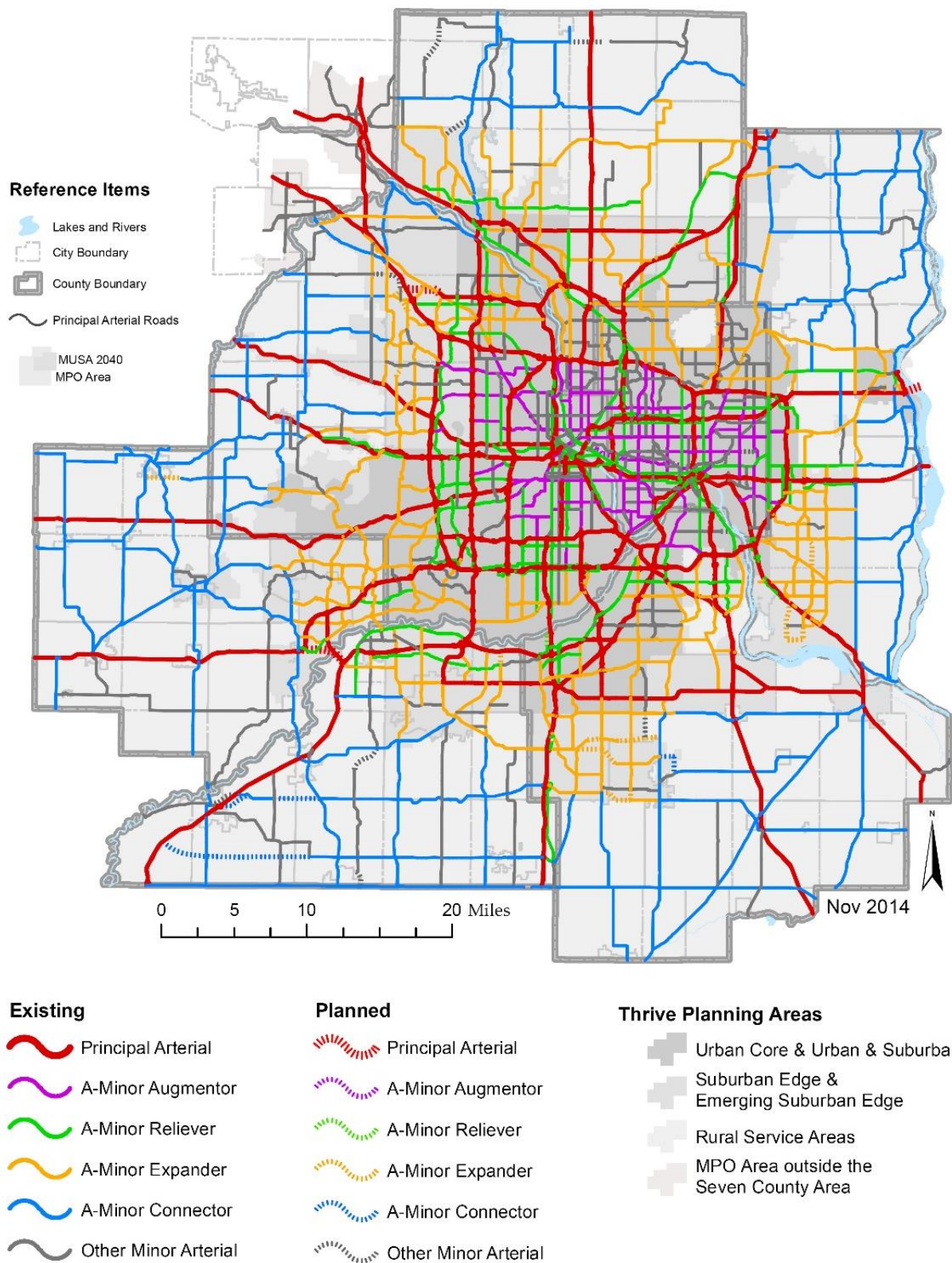


Figure 5-8 of the TPP

Identified Projects* in Highway Current Revenue Scenario

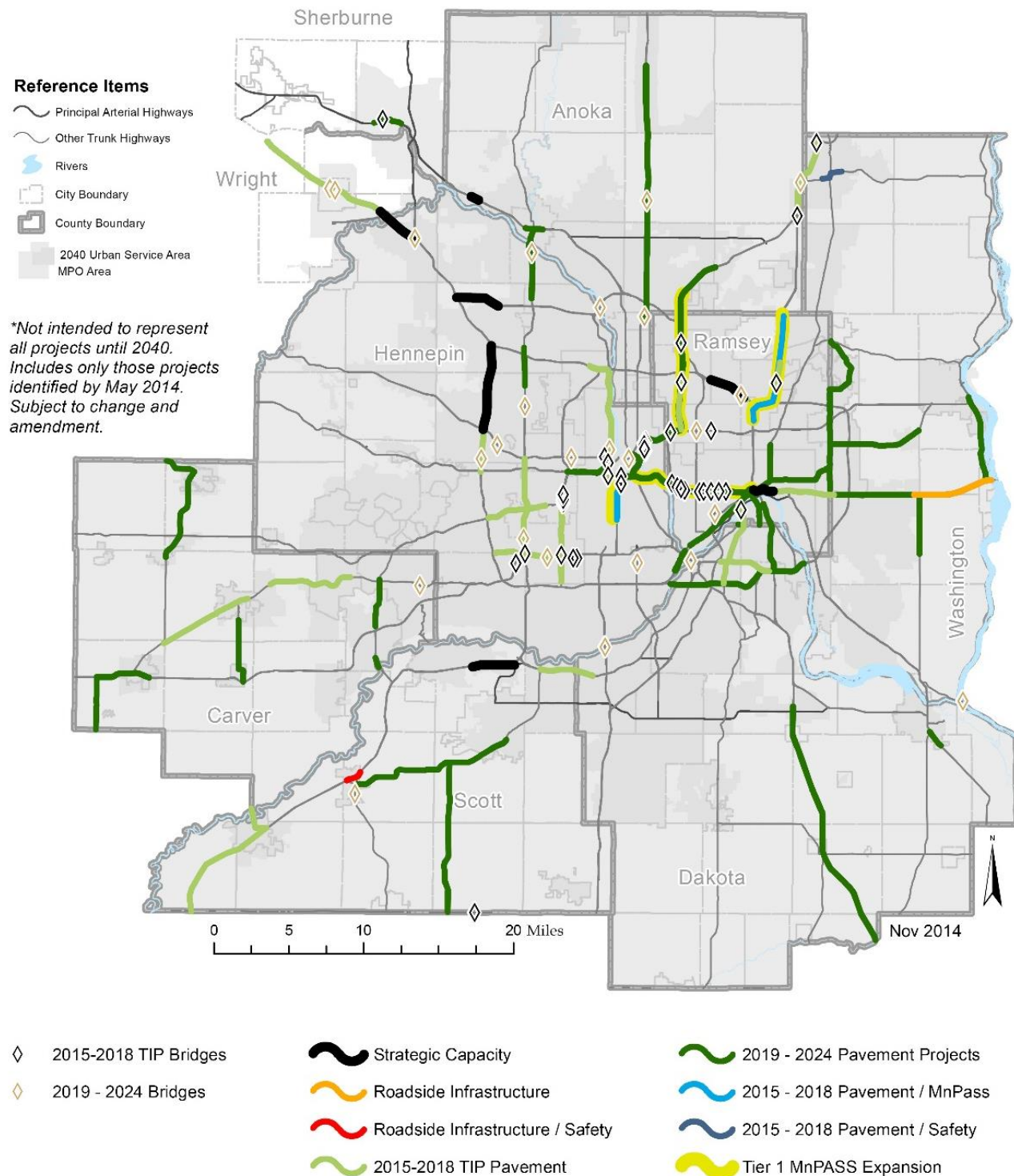


Figure 6-3 of the TPP

Transit Market Areas

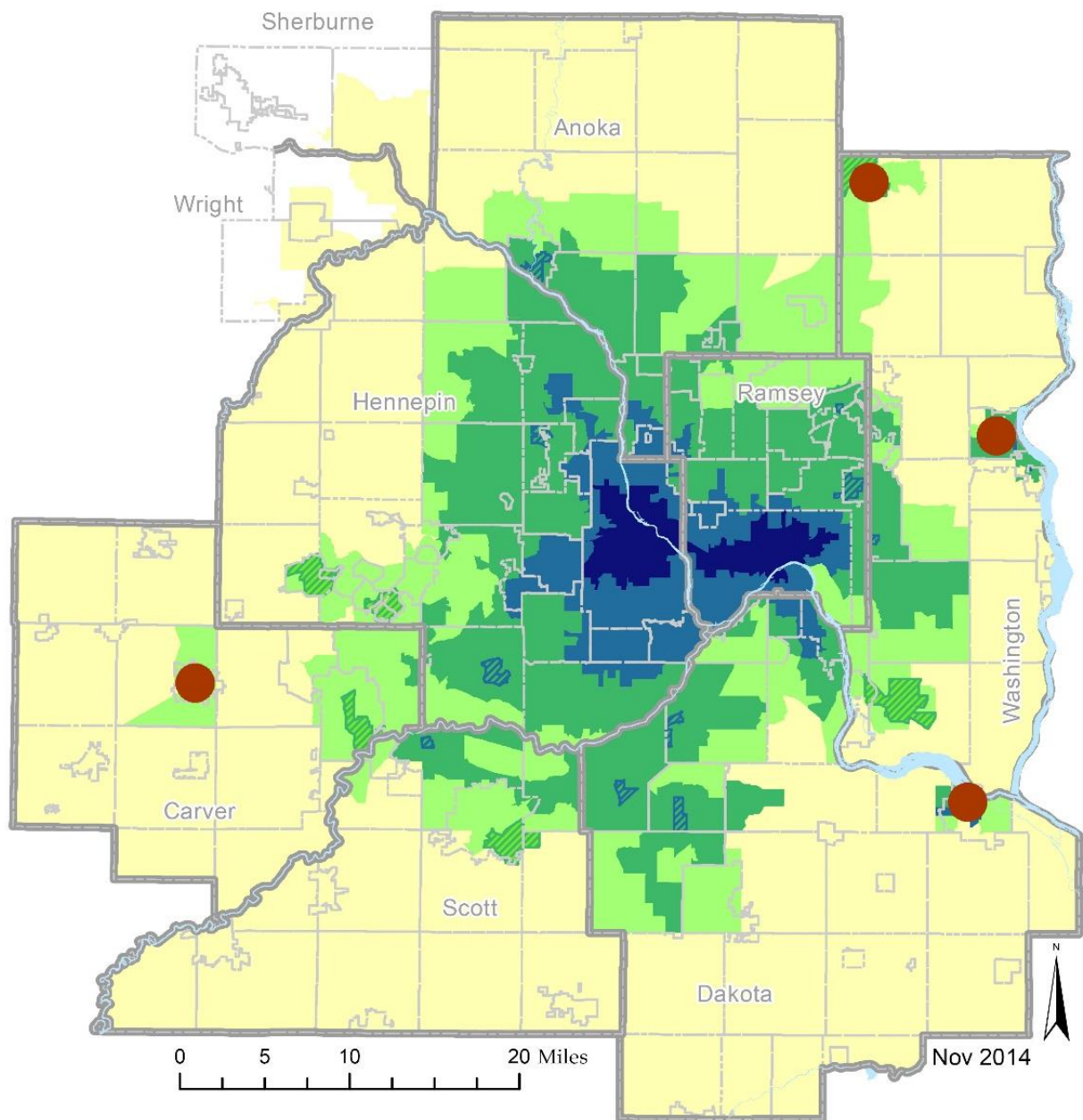
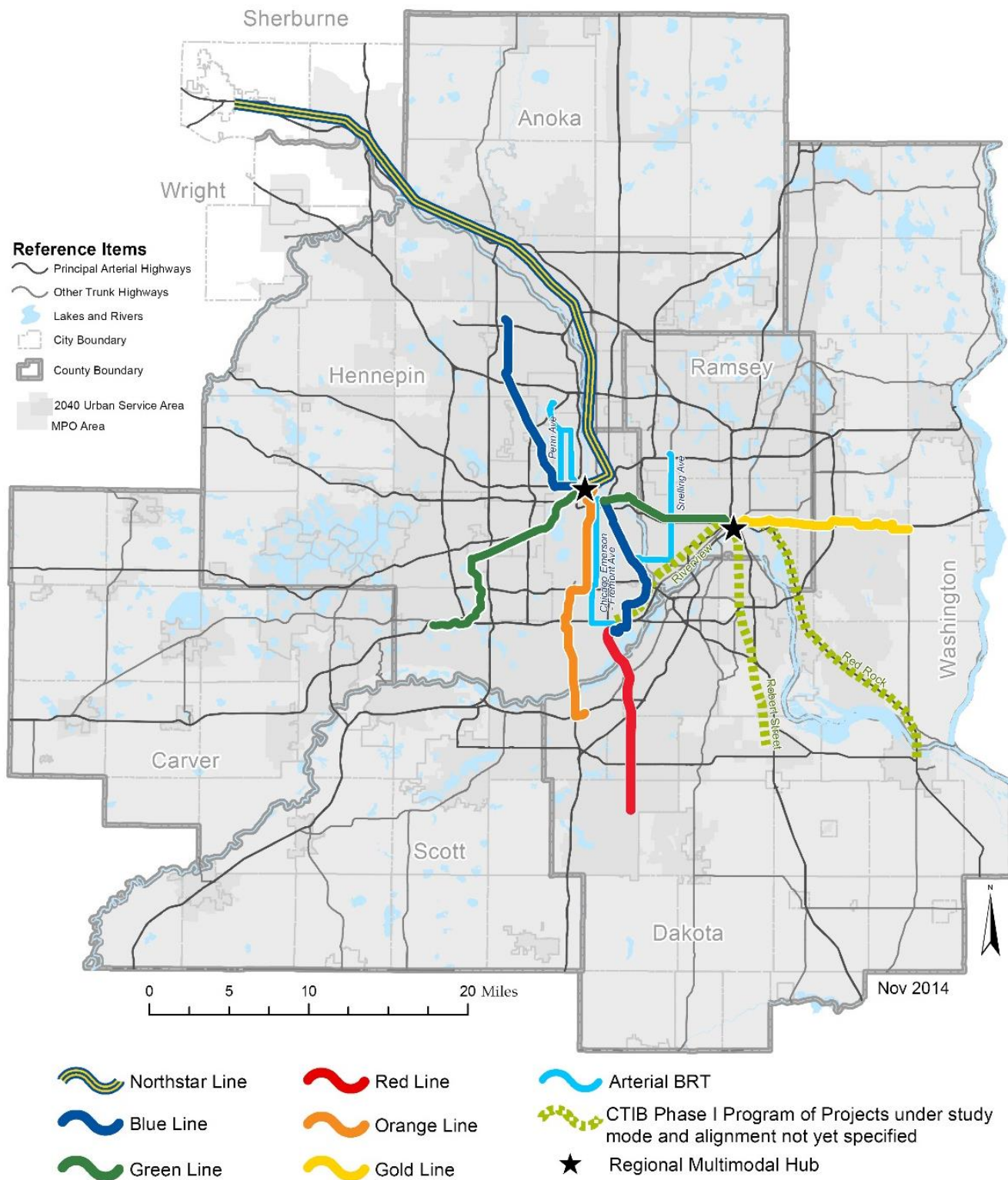


Figure 6-8 of the TPP

Current Revenue Scenario Transitways and CTIB Phase I Program of Projects



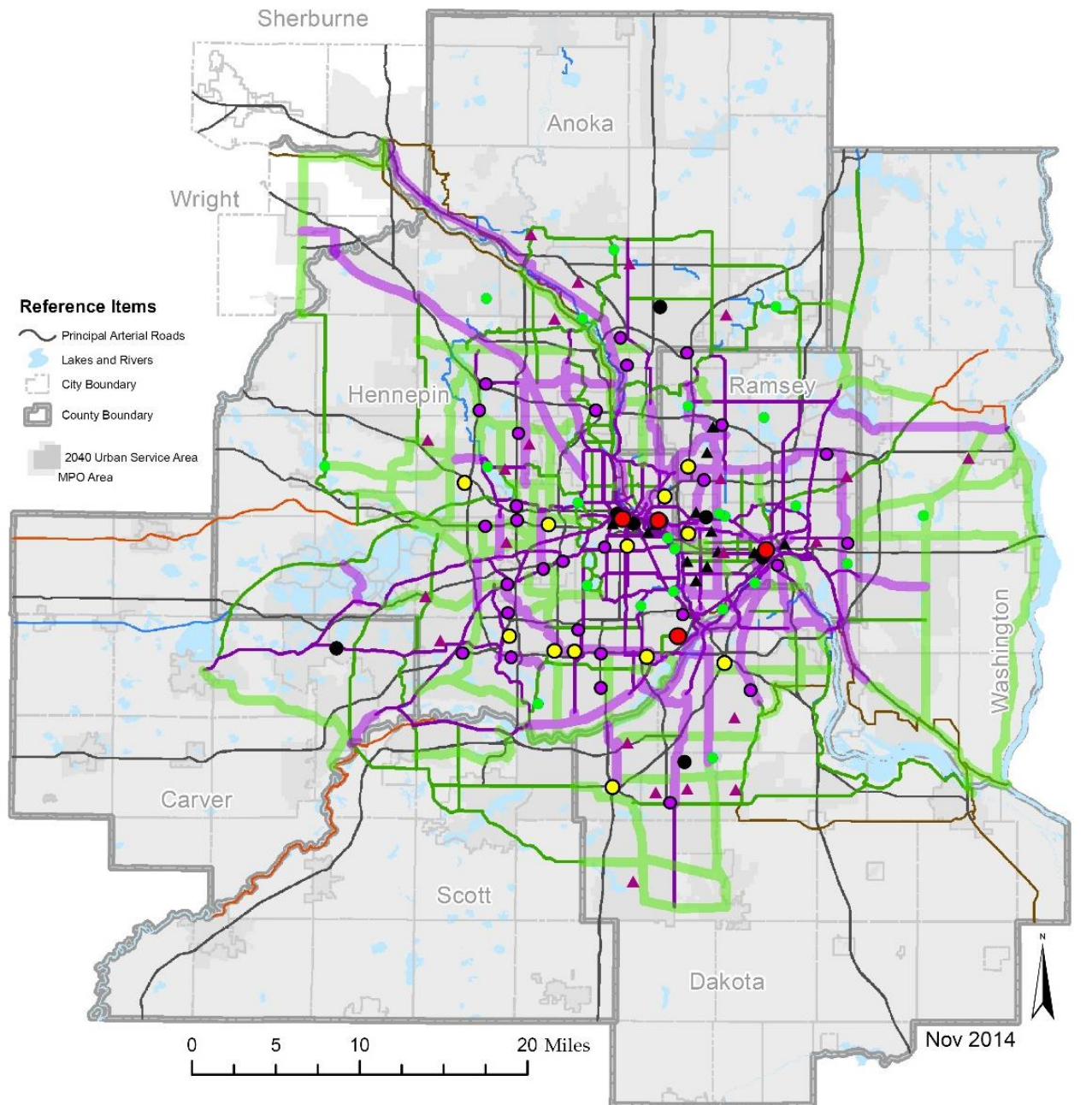
Increased Revenue Scenario Transitways

Building an Accelerated Transitway Vision



Figure 7-1 of the TPP

Regional Bicycle Transportation Network Vision



RBTN Alignments

- Tier 1 Alignments
- Tier 2 Alignments

RBTN Corridors (Alignments Undefined)

- Tier 1 Priority Regional Bicycle Transportation Corridor
- Tier 2 Regional Bicycle Transportation Corridors

Regional Destinations

- Metropolitan Job Centers
- Regional Job Centers
- Subregional Job Centers
- Large High Schools
- Colleges & Universities
- Highly Visited Regional Parks
- Major Sport & Entertainment Centers

Other Trail Systems

- Regional Trails (Regional Parks Policy Plan)
- Mississippi River Trail (US Route 45)
- State Trails (DNR)

Figure 8-1 of the TPP

Metropolitan Freight System

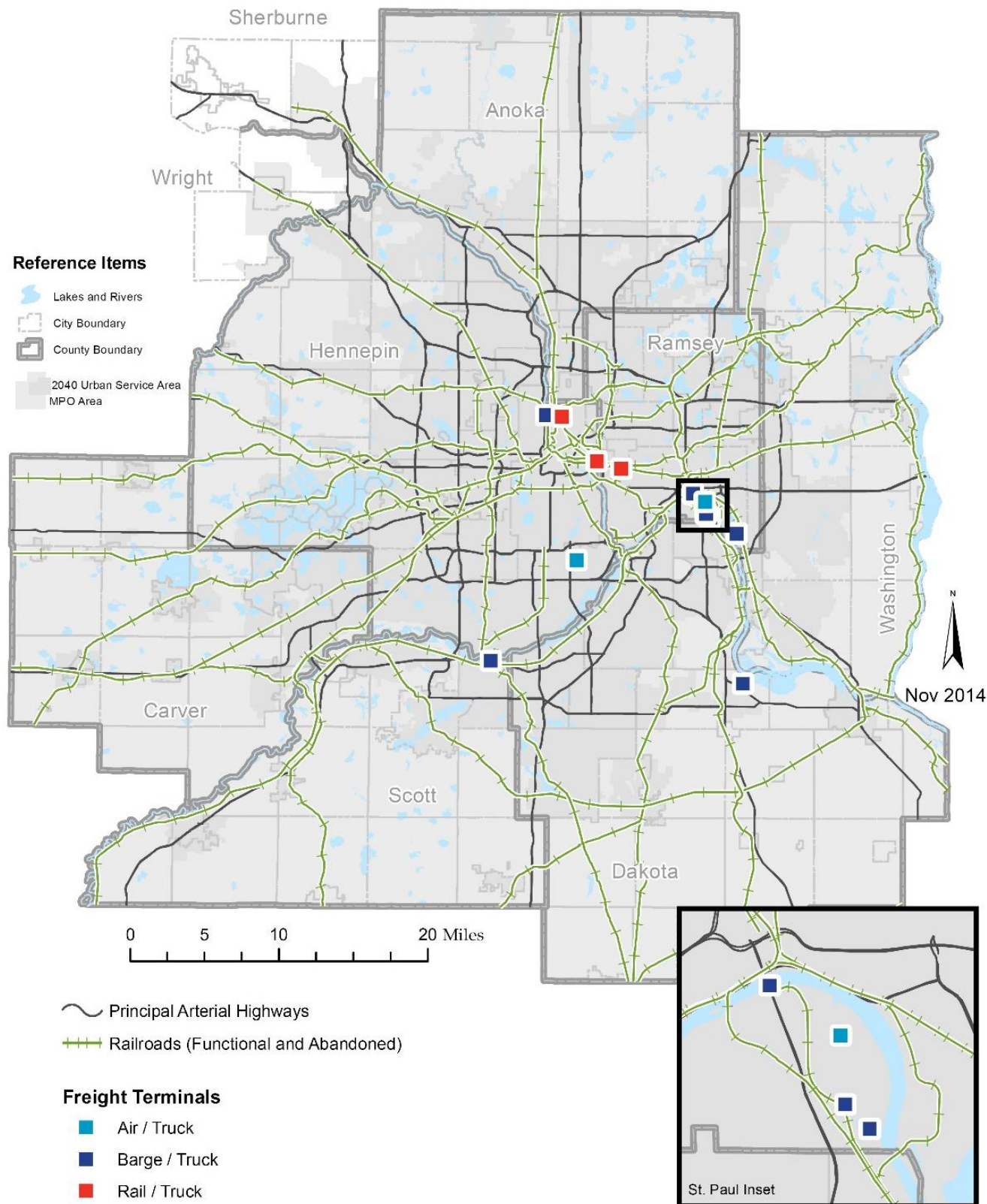
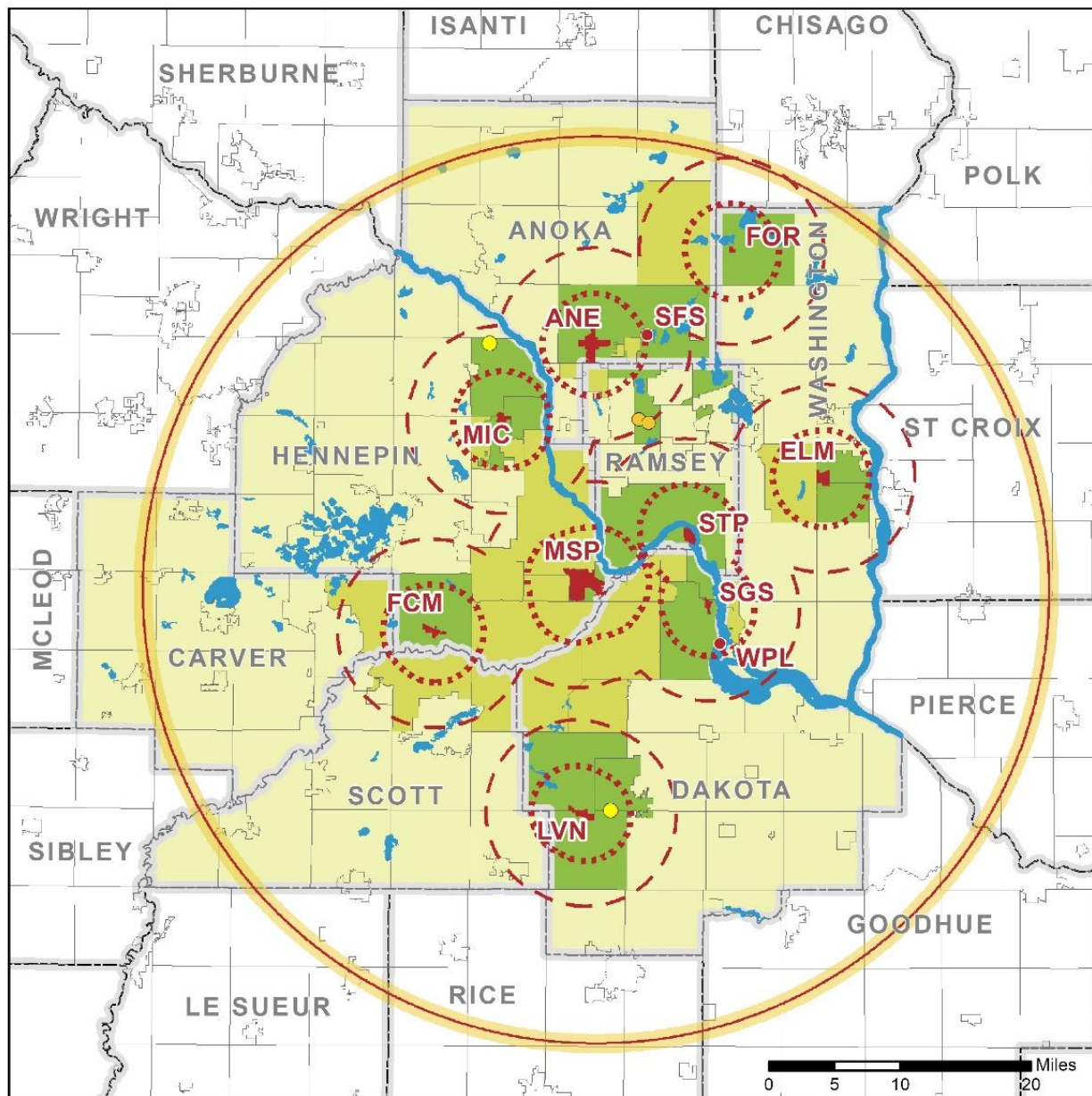
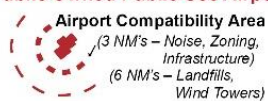


Figure 9-1 of the TPP

Airport Service Areas



Public Owned Public Use Airport



- | | |
|--|---|
| MSP Minneapolis – St. Paul International Airport (Wold-Chamberlain Field) | MIC Crystal Airport |
| STP St. Paul Downtown Airport (Holman Field) | SGS South St. Paul Airport (Fleming Field) |
| ANE Anoka County – Blaine Airport (Janes Field) | ELM Lake Elmo Airport |
| FCM Flying Cloud Airport | LVN Airlake Airport |
| | FOR Forest Lake Airport |

Privately Owned Public Use Airport

- SFS** Surf-Side Seaplane Base (Rice Lake)
- WPL** Wipline Seaplane Base (Miss. River)

- Minneapolis Class-B Airspace Boundary
- Permitted Seaplane Surface Waters (within 7 County Area only)
- VOR Protection Zone
- Tall Tower Areas
- Aviation Facility Located in Community
- Community Directly Affected by Facility(s)
- General Airspace Notification/Protection

WATER RESOURCE REQUIREMENTS

Anoka County

The 2040 Water Resources Policy Plan includes policies and strategies to achieve the following goal:

To protect, conserve, and utilize the region's groundwater and surface water in ways that protect public health, support economical growth and development, maintain habitat and ecosystem health, and provide for recreational opportunities, which are essential to our region's quality of life.

The Policy Plan takes an integrated approach to water supply, water quality, and wastewater issues. This approach moves beyond managing wastewater and stormwater only to meet regulatory requirements by viewing wastewater and stormwater as resources, with the goal of protecting the quantity and quality of water our region needs now and for future generations.

The Policy Plan includes policies and strategies to:

- Maximize regional benefits from regional investments in the areas of wastewater, water supply and surface water.
- Pursue reuse of wastewater and stormwater to offset demands on groundwater supplies.
- Promote greater collaboration, financial support, and technical support in working with partners to address wastewater, water quality, water quantity and water supply issues.
- Implement environmental stewardship in operating the regional wastewater system by reusing wastewater, reducing energy use and air pollutant emissions, and reducing, reusing, and recycling solid waste.

Key Concepts in the 2040 Water Resources Policy Plan

Adopted by the Metropolitan Council in May 2015, the 2040 Water Resources Policy Plan is the metropolitan system plan for metropolitan wastewater services with which local comprehensive plans must conform. The Policy Plan incorporates the following changes:

- Centers on and around an integrated approach to water supply, wastewater, and surface water planning.
- Promotes the investigation of the issues and challenges in furthering our work in water conservation, wastewater and stormwater reuse, and low impact development practices in order to promote a more sustainable region.
- Promotes the concept of sustainable water resources where, through collaboration and cooperation, the region will take steps to manage its water resources in a sustainable way aimed at:
 - Providing an adequate water supply for the region
 - Promoting and implementing best management practices that protect the quality and quantity of our resources
 - Providing efficient and cost effective wastewater services to the region
 - Efficiently addressing nonpoint and point sources pollution issues and solutions, and,
 - Assessing and monitoring lakes, rivers, and streams so that we can adequately manage, protect, and restore our valued resources.
- Continues the Council's position that communities that permit the construction and operation of subsurface sewage treatment systems and other private wastewater treatment systems are responsible for ensuring that these systems are installed, maintained, managed and regulated consistent with Minnesota Rules Chapter 7080-7083.

- Includes requirements in Appendix C for comprehensive sewer plans, local water plans, and local water supply plans.
- Establishes inflow and infiltration goals for all communities served by the regional wastewater system and requires all communities to include their inflow and infiltration mitigation programs in their comprehensive sewer plan.
- Works with the State to attempt to (1) make funds available for inflow and infiltration mitigation, and (2) promote statutes, rules, and regulations to encourage I/I mitigation.

Anoka County should consult the complete Policy Plan in preparing its local comprehensive plan. In addition, Anoka County should consult *Thrive MSP 2040* and the [*Local Planning Handbook*](#) for specific information needed in its comprehensive plan.

Figures 1 and 2 are for your use as you develop your comprehensive plans. Figure 1 is a map of the MCES wastewater treatment service area including the regional treatment plants, interceptors, meters, and lift stations within the County. Figure 2 is a map of the Council's priority lakes, impaired waters and watershed organizations within the County.

Figure 1. MCES Wastewater Treatment Plant Service Areas

Anoka County

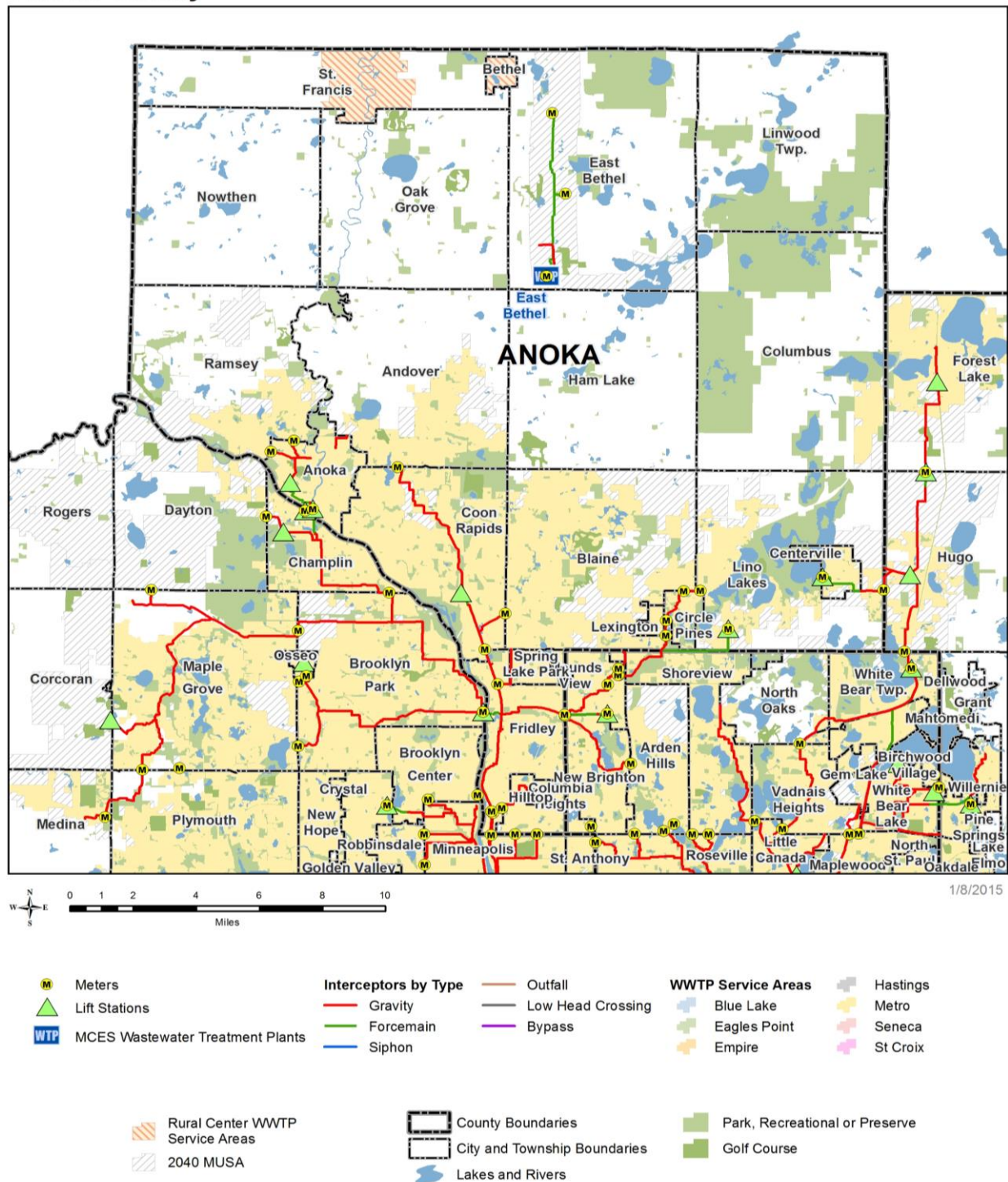
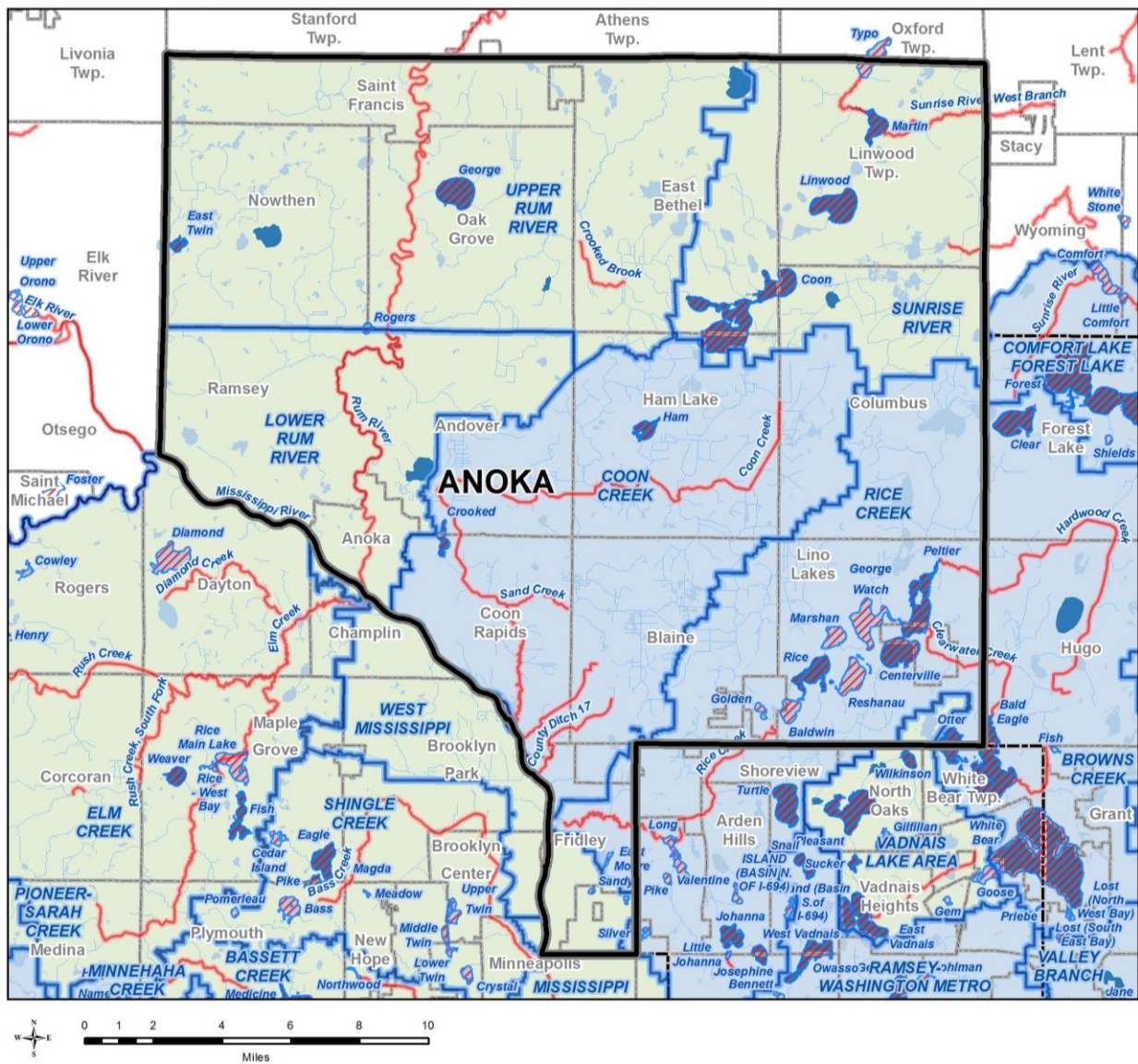


Figure 2. Surface Water Resources

Anoka County



-  Watershed Management Organization Boundaries
- Watershed Management Organization Type**
-  County
-  Watershed District
-  Watershed Management Organization

-  Impaired Lakes (2014 Draft MPCA 303(d) List)
-  Impaired Rivers & Streams (2014 Draft MPCA 303(d) List)
-  2014 Priority Lakes
-  County Boundaries
-  City and Township Boundaries
-  Other Lakes and Major Rivers
-  Other Streams

REGIONAL PARKS SYSTEM STATEMENT

Anoka County

The Regional Parks System includes 62 regional parks, park reserves, and special recreation features, plus more than 340 miles of regional trails that showcase the unique landscapes of the region and provide year-round recreation. The Regional Parks System is well-loved by our region's residents and attracted over 48 million annual visits in 2014.

The organizational structure of the Regional Parks System is unique, built upon a strong partnership between the Council and the ten regional park implementing agencies that own and operate Regional Parks System units. The regional park implementing agencies are:

Anoka County	Ramsey County
City of Bloomington	City of Saint Paul
Carver County	Scott County
Dakota County	Three Rivers Park District
Minneapolis Park and Recreation Board	Washington County

The *2040 Regional Parks Policy Plan* was developed based on furthering the *Thrive MSP 2040* outcomes of Stewardship, Prosperity, Equity, Livability, and Sustainability. *Thrive MSP 2040* states that the Council will collaborate with the Metropolitan Parks and Open Space Commission, the regional park agencies, and state partners to:

- Expand the Regional Parks System to conserve, maintain, and connect natural resources identified as being of high quality or having regional importance, as identified in the *2040 Regional Parks Policy Plan*.
- Provide a comprehensive regional park and trail system that preserves high-quality natural resources, increases climate resiliency, fosters healthy outcomes, connects communities, and enhances quality of life in the region.
- Promote expanded multimodal access to regional parks, regional trails, and the transit network, where appropriate.
- Strengthen equitable usage of regional parks and trails by all our region's residents, such as across age, race, ethnicity, income, national origin, and ability.

Key Concepts in the *2040 Regional Parks Policy Plan*

The *2040 Regional Parks Policy Plan* includes the following policies, each with specific associated strategies:

- **Recreation Activities and Facilities Policy:** Provide a regional system of recreation opportunities for all residents, while maintaining the integrity of the natural resource base within the Regional Parks System.

- **Siting and Acquisition Policy:** Identify lands with high-quality natural resources that are desirable for Regional Parks System activities and put these lands in a protected status so they will be available for recreational uses and conservation purposes in perpetuity.
- **Planning Policy:** Promote master planning and help provide integrated resource planning across jurisdictions.
- **Finance Policy:** Provide adequate and equitable funding for the Regional Parks System units and facilities in a manner that provides the greatest possible benefits to the people of the region.
- **System Protection Policy:** Protect public investment in acquisition and development by assuring that every component in the system is able to fully carry out its designated role as long as a need for it can be demonstrated.

The *2040 Regional Parks Policy Plan* is the metropolitan system plan for regional recreation open space with which local comprehensive plans must conform. This system statement highlights the elements of the system plan which apply specifically to your community. Find the complete text of the *2040 Regional Parks Policy Plan* on [the Council's website](#).

2040 Regional Parks System Facilities

The Regional Parks System is comprised of four main types of facilities: regional parks, park reserves, special recreation features and regional trails.

Regional Parks

Regional parks most notably contain a diversity of nature-based resources, either naturally occurring or human-built, and are typically 200-500 acres in size. Regional parks accommodate a variety of passive recreation activities.

Park Reserves

Park reserves, like regional parks, provide for a diversity of outdoor recreation activities. One major feature that distinguishes a park reserve from a regional park is its size. The minimum size for a park reserve is 1,000 acres. An additional characteristic of park reserves is that up to 20 percent of the park reserve can be developed for recreational use, with at least 80 percent of the park reserve to be managed as natural lands that protect the ecological functions of the native landscape.

Special Recreation Features

Special recreation features are defined as Regional Parks System opportunities not generally found in the regional parks, park reserves or trail corridors. Special recreation features often require a unique managing or programming effort.

Regional Trails

Regional trails are classified as 1) destination or greenway trails and 2) linking trails. Destination or greenway trails typically follow along routes with high-quality natural resources that make the trail itself a destination. Linking trails are predominately intended to provide connections between various Regional Parks System facilities, most notably regional parks or park reserves.

2040 Regional Parks System Components

The *2040 Regional Parks Policy Plan* identifies six components which together comprise the vision for the Regional Parks System in 2040, as described below.

Existing Regional Parks System Facilities: include Regional Parks System Facilities that are open for public use. These facilities include land that is owned by regional park implementing agencies, and may include inholding parcels within the boundaries of these parks and trail corridors that have not yet been acquired. Existing regional trails may include planned segments that will be developed in the future.

Planned Regional Parks System Facilities (not yet open to the public): include Regional Parks System Facilities that have a Council-approved master plan and may be in stages of acquisition and development, but are not yet open for public use.

Regional Parks System Boundary Adjustments: include general areas identified as potential additions to existing Regional Parks System Facilities to add recreational opportunities or protect natural resources. Specific adjustments to park or trail corridor boundaries have not yet been planned.

Regional Park Search Areas: include general areas for future regional parks to meet the recreational needs of the region by 2040 where the regional park boundary has not yet been planned.

Regional Trail Search Corridors: include proposed regional trails to provide connections between Regional Parks System facilities where the trail alignment has not yet been planned.

2040 Regional Trail Search Corridor System Additions: include regional trail search corridors that were added to the Regional Parks System as part of the *2040 Regional Parks Policy Plan*.

Key Changes in the 2040 Regional Parks Policy Plan

Adopted by the Metropolitan Council in February 2015, the *2040 Regional Parks Policy Plan* incorporates the following changes:

Identify all proposed regional trails as regional trail search corridors

All proposed regional trails that are not yet open to the public and do not have a Metropolitan Council approved master plan are represented as a general regional trail search corridor. The *2030 Regional Parks Policy Plan* depicted these trails with a proposed alignment. The alignment of these regional trails will be determined in the future through a planning process led by the regional park implementing agency. The alignment of these trails is subject to Metropolitan Council approval of a regional trail master plan.

Acquire and develop ten new regional trails or trail extensions to meet the needs of the region in 2040. The 2040 Regional Trail Search Corridor Additions include:

Carver County:

- County Road 61
- Highway 41

Three Rivers Park District:

- CP Rail Extension
- Dakota Rail Extension
- Lake Independence Extension
- Lake Sarah Extension
- Minnetrista Extension
- North-South 1
- North-South 2
- West Mississippi River

The *2040 Regional Parks System Plan Map* is depicted in Figure 1. Anoka County should consult the complete [2040 Regional Parks Policy Plan](#) in preparing its local comprehensive plan. In addition, Anoka County should consult *Thrive MSP 2040* and the current version of the Metropolitan Council's [Local Planning Handbook](#) for specific information needed in its comprehensive plan.

System Plan Considerations Affecting Your Community

Regional Parks System Components in your community

The following Regional Parks System Components within Anoka County as identified in the *2040 Regional Parks Policy Plan* are listed below.

Regional Parks, Park Reserves, and Special Recreation Features

- Anoka County Riverfront Regional Park
- Bunker Hills Regional Park
- Coon Rapids Dam Regional Park
- Lake George Regional Park
- Martin – Island – Linwood Lakes Regional Park
- Mississippi West Regional Park
- Northwest Anoka County Regional Park Search Area
- Rice Creek Chain of Lakes Park Reserve
- Rum River Central Regional Park

Regional Trails

- Bunker Hills – Chain of Lakes Regional Trail
- Central Anoka Regional Trail
- Chain of Lakes – Otter Lake Regional Trail Search Corridor
- Coon Creek Regional Trail
- East Anoka County Extension Regional Trail Search Corridor
- East Anoka County Regional Trail
- Mississippi River Regional Trail
- North Anoka County Regional Trail Search Corridor
- Rice Creek North Regional Trail
- Rice Creek West Regional Trail
- Rum River Regional Trail
- Sugar Hills Regional Trail Search Corridor

State lands in your community

State park and open space units that provide outdoor recreation opportunities and natural resource conservation for the public complement the Regional Parks System and are recognized in the *2040 Regional Parks Policy Plan*. The following State lands as shown in Figure 2 are within Anoka County and should be acknowledged in its comprehensive plan.

- Bearman Wildlife Management Area
- Bethel Wildlife Management Area
- Blaine Airport Rich Fen Scientific and Natural Area
- Blaine Preserve Scientific and Natural Area
- Boot Lake Scientific and Natural Area
- Carl E. Bonnell Wildlife Management Area
- Carlos Avery Wildlife Management Area
- Gordie Mikkelson Wildlife Management Area
- Helen Allison Savanna Scientific and Natural Area
- Lamprey Pass Wildlife Management Area
- Robert and Marilyn Burman Wildlife Management Area

Please contact the Minnesota Department of Natural Resources for more information about State lands.

Figure 1. 2040 Regional Parks System Plan Map

Regional Parks System Twin Cities Metropolitan Area

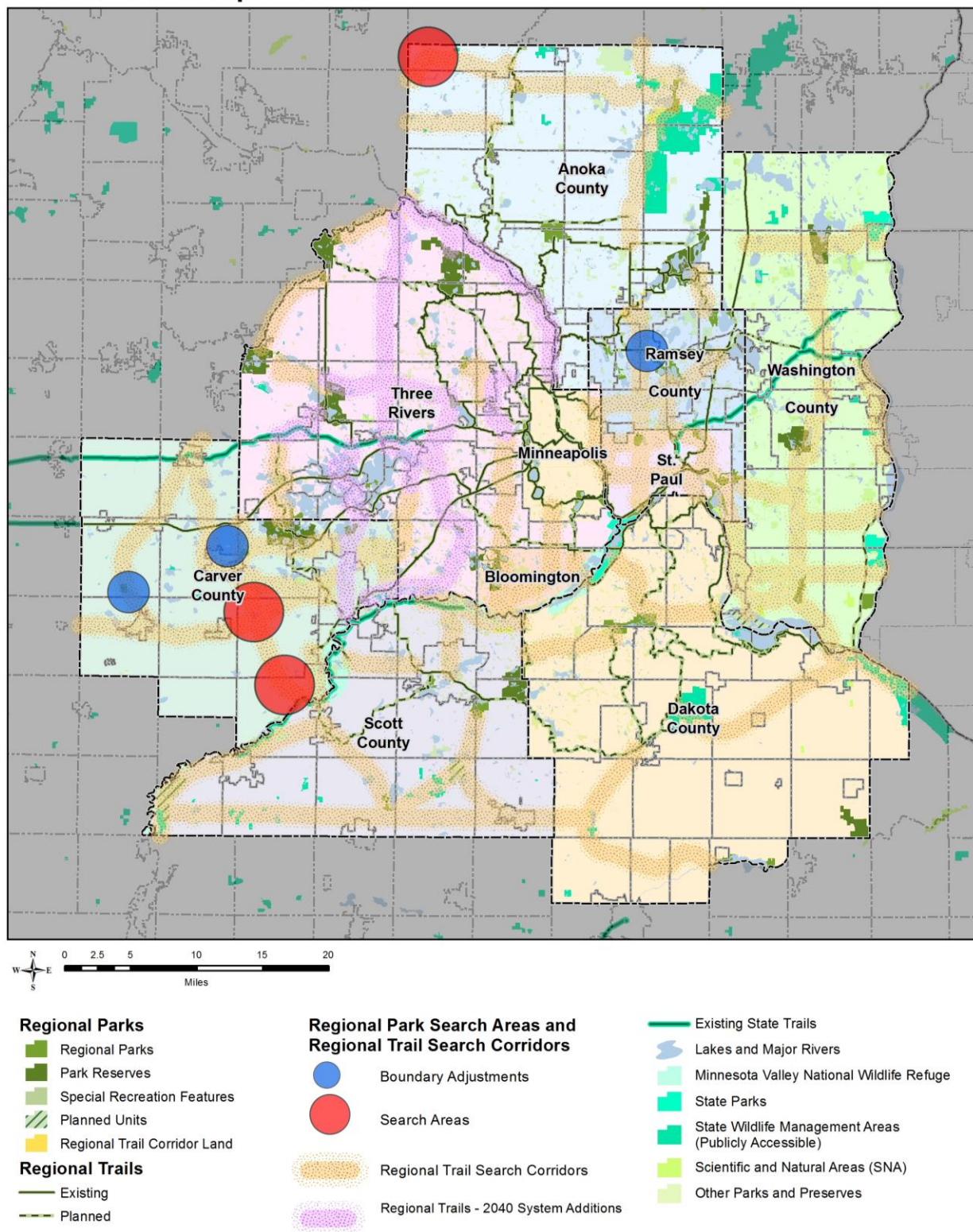
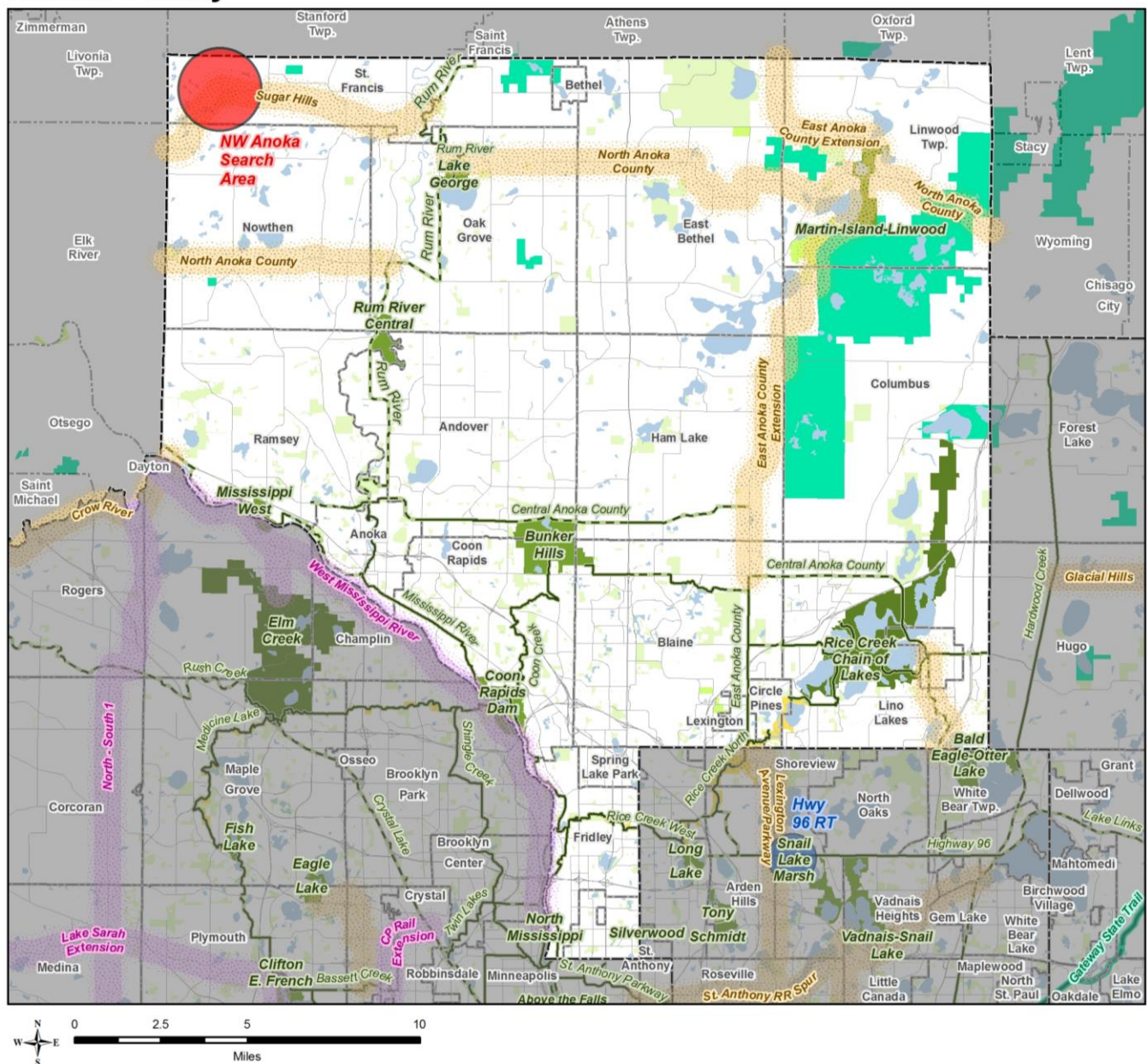


Figure 2: Regional Parks System Facilities in and adjacent to Anoka County

Regional Parks System Anoka County



- Regional Parks**
- Regional Parks
 - Park Reserves
 - Special Recreation Features
 - Planned Units
 - Regional Trail Corridor Land

- Regional Trails**
- Existing
 - Planned

Regional Park Search Areas and Regional Trail Search Corridors

- Boundary Adjustments
- Search Areas
- Regional Trail Search Corridors
- Regional Trails - 2040 System Additions

- Existing State Trails
- Main Roads & Highways
- Lakes and Major Rivers
- Minnesota Valley National Wildlife Refuge
- State Parks
- State Wildlife Management Areas (Publicly Accessible)
- Scientific and Natural Areas (SNA)
- Other Parks and Preserves

