



THE ROLE OF **TRANSIT** IN SUPPORTING OUR REGION'S **COMPETITIVE CLUSTERS**

Metropolitan Council Committee of the Whole
September 2, 2015

Yingling Fan, Associate Professor
Humphrey School of Public Affairs
University of Minnesota

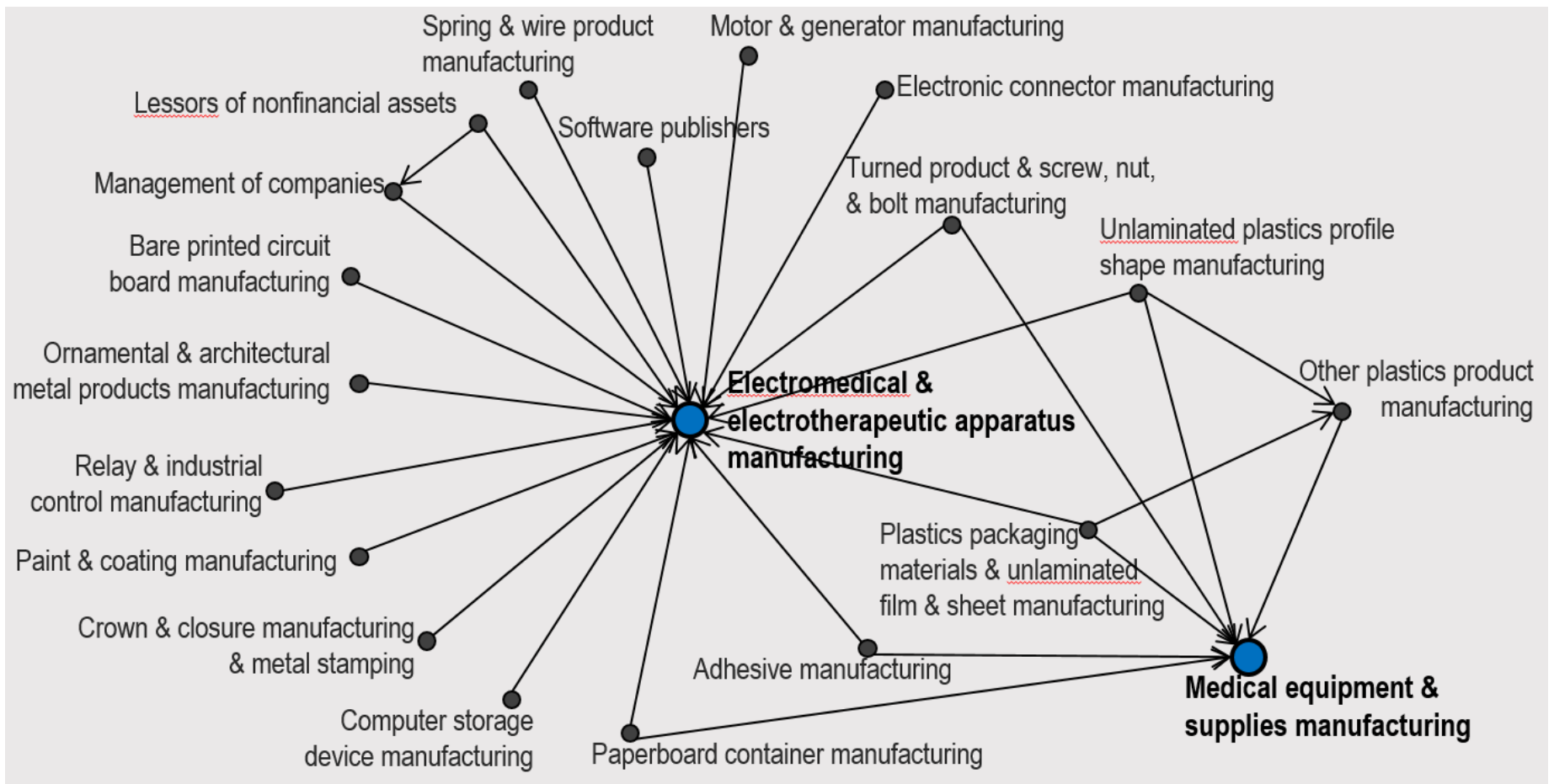
California's Wine Cluster

Supplier Specification



* Based on research by Harvard MBA students R. Alexander, R. Arney, N. Black, E. Frost, and A. Shivanand

Twin Cities' Medical Manufacturing Cluster





Competitive clusters requires **connections** and **accessibility**.

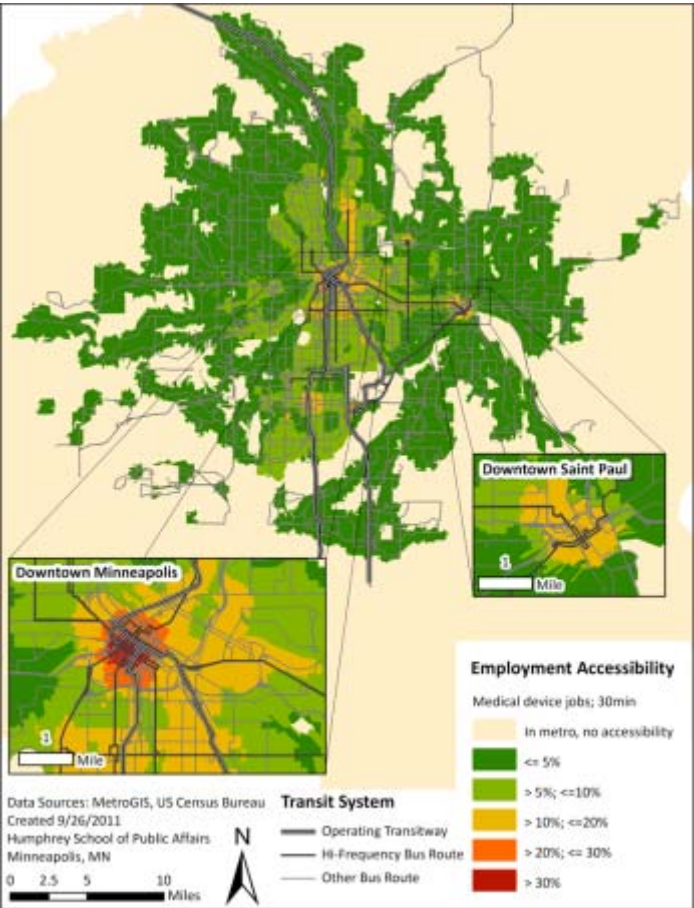
- ▣ Workers to job opportunities
- ▣ Employers to the labor force

Transit, especially transit corridors, can play a key role.



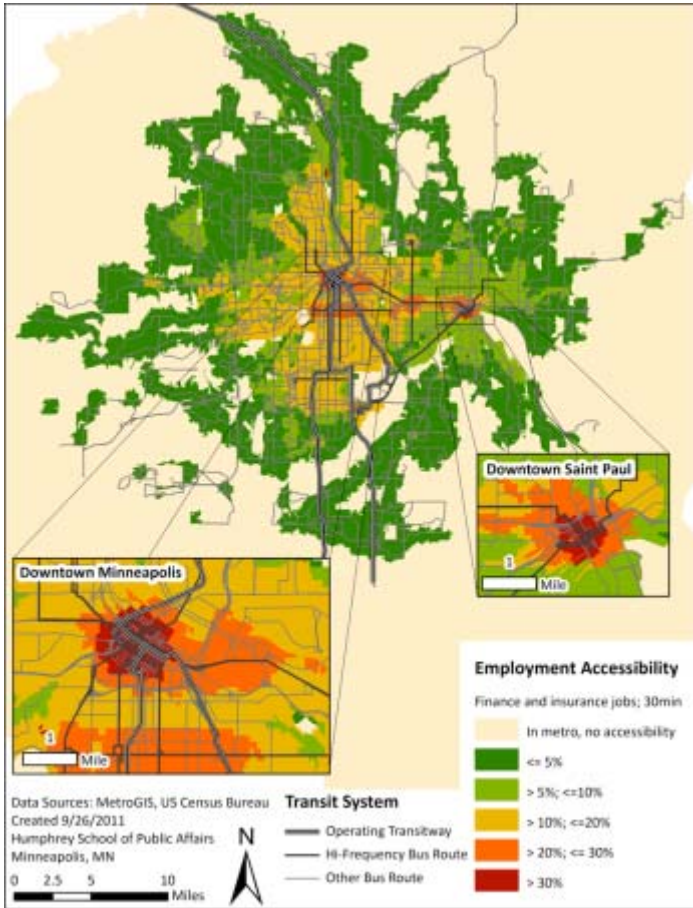
Current Transit-Based Access to Cluster Jobs

Medical Manufacturing (7% of metro jobs)



Employment Accessibility - Expanded Cluster:
Medical device manufacturing jobs within 30 minutes

Finance and Insurance (47% of metro jobs)



Employment Accessibility - Expanded Cluster:
Finance and insurance jobs within 30 minutes

Illustrated the varying degrees of access by transit to the different clusters.

Future Transit Corridors

TWIN CITIES REGIONAL TRANSIT PLAN

FUNDED		UNFUNDED	
	Light Rail		Rapid Bus
	LRT/BRT (mode TBD)		Rapid Bus/Streetcar
	Highway Bus Rapid Transit - BRT		Commuter Rail



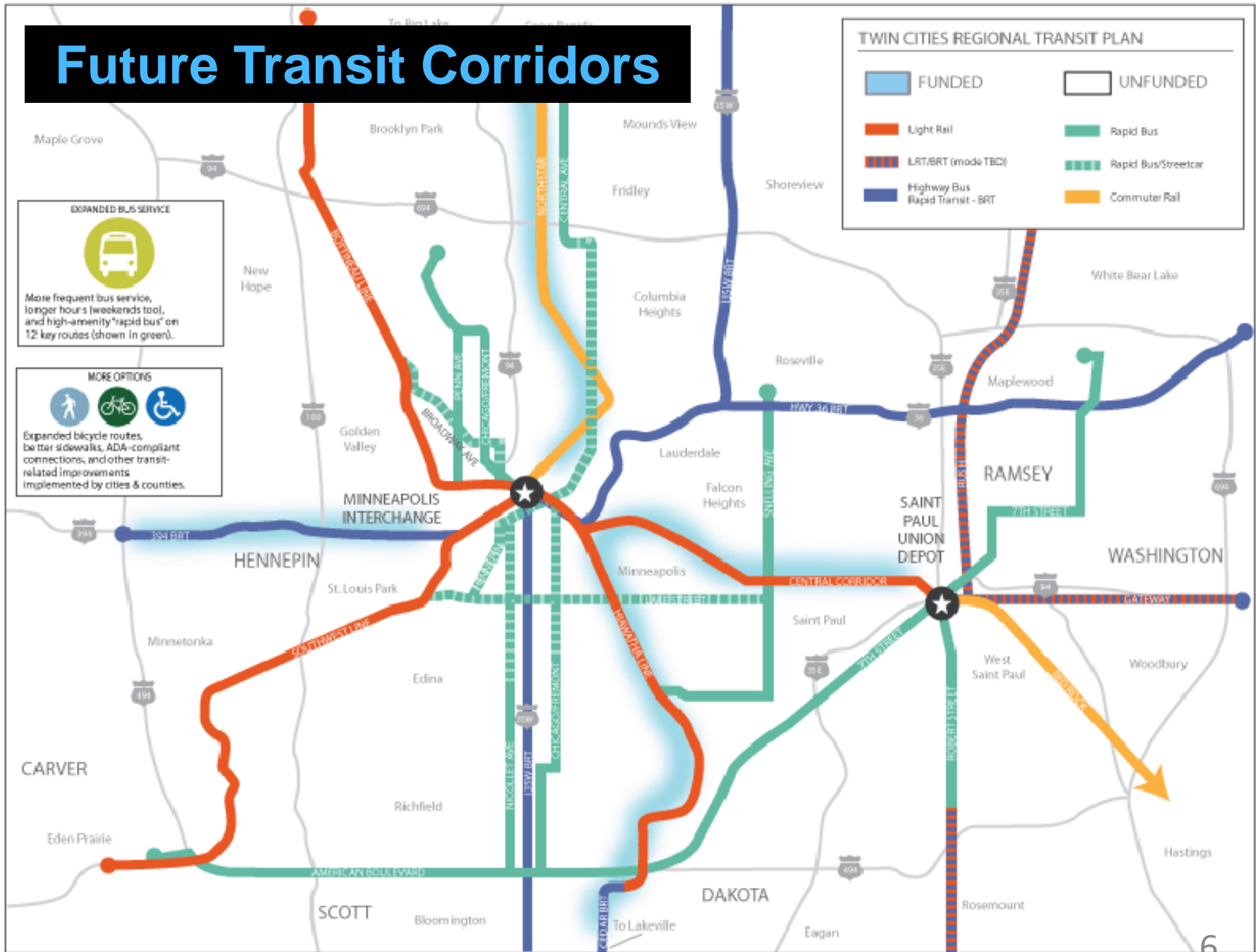
EXPANDED BUS SERVICE

More frequent bus service, longer hours (weekends too), and high-amenity "rapid bus" on 12 key routes (shown in green).



MORE OPTIONS

Expanded bicycle routes, better sidewalks, ADA-compliant connections, and other transit-related improvements implemented by cities & counties.



The lines depicted on this map are in various stages of planning and are subject to change.

Prepared by Transit for a Stronger Economy Coalition 011713

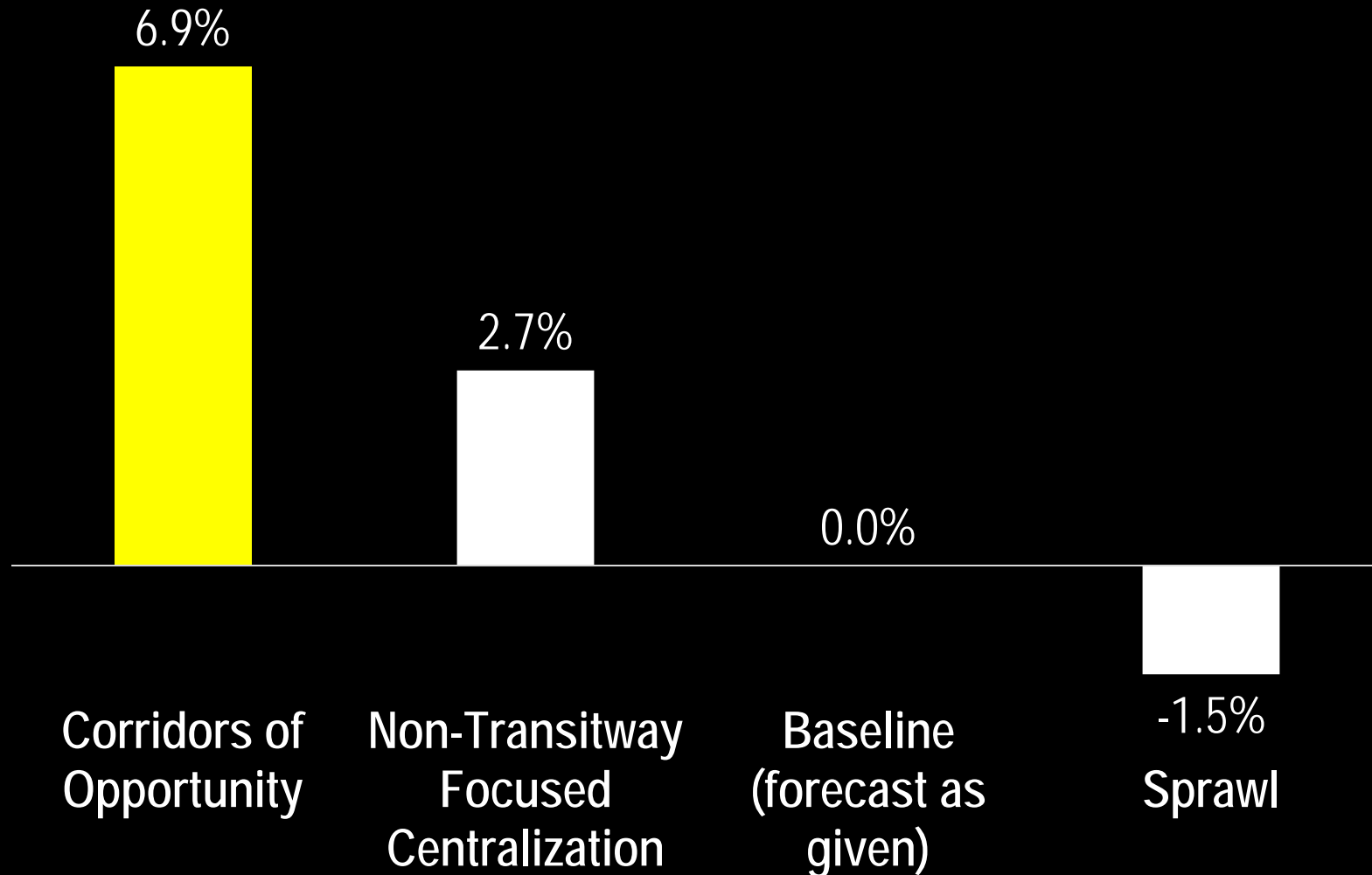
Sprawl



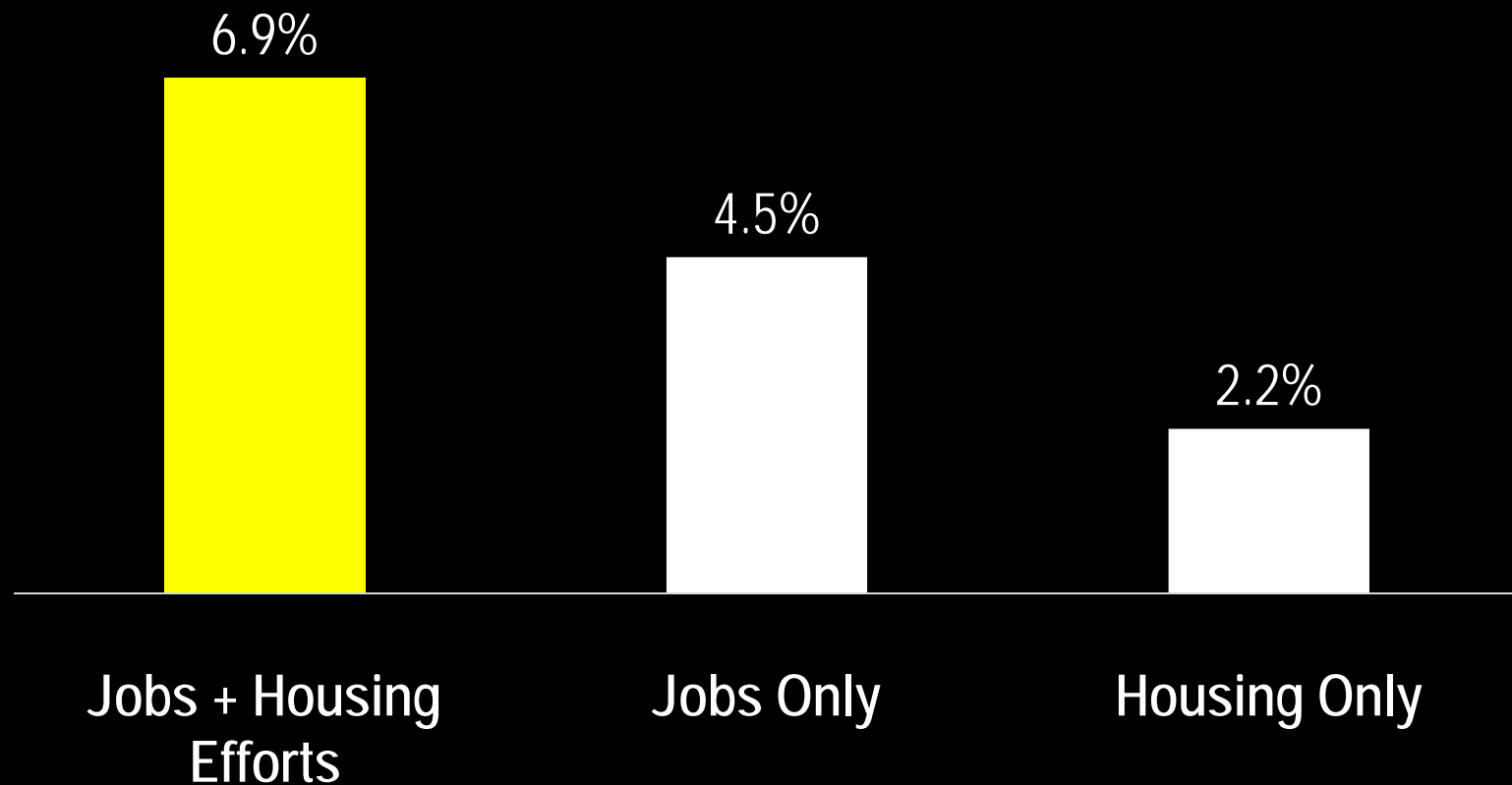
"Corridors of Opportunity"



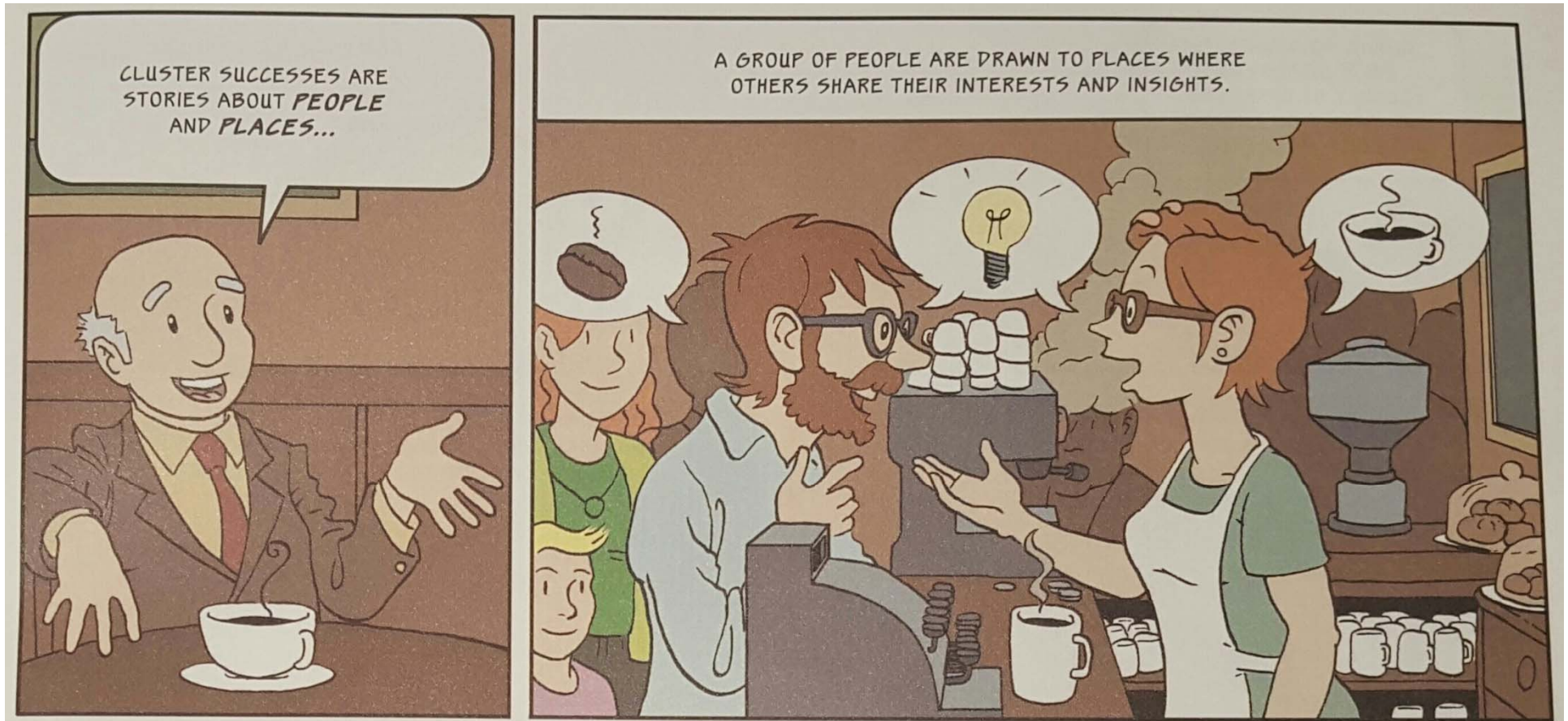
Regional Transit-Based Job Accessibility



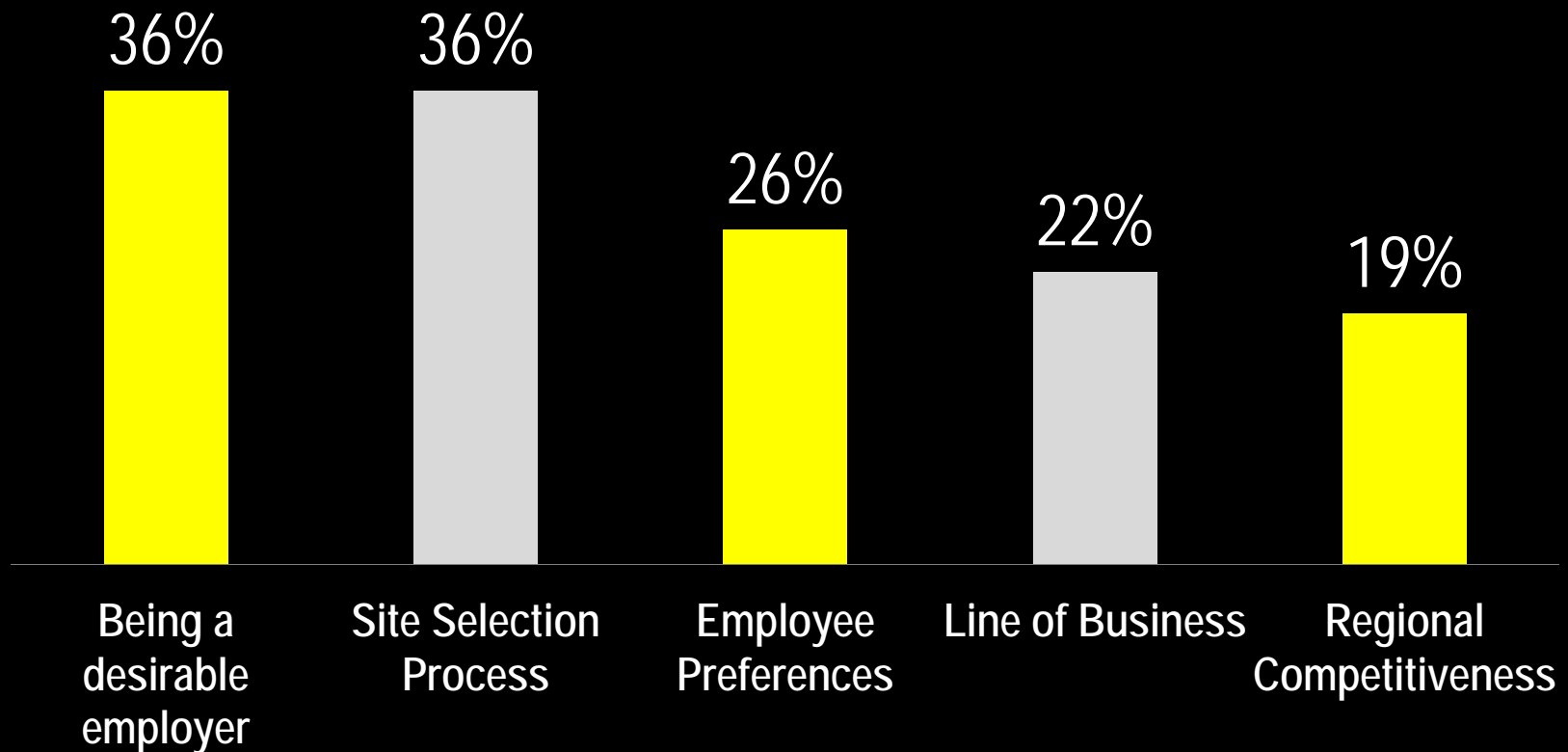
Job creation near transit especially important for Corridors of Opportunity



Attracting businesses to transit require effective workforce development.

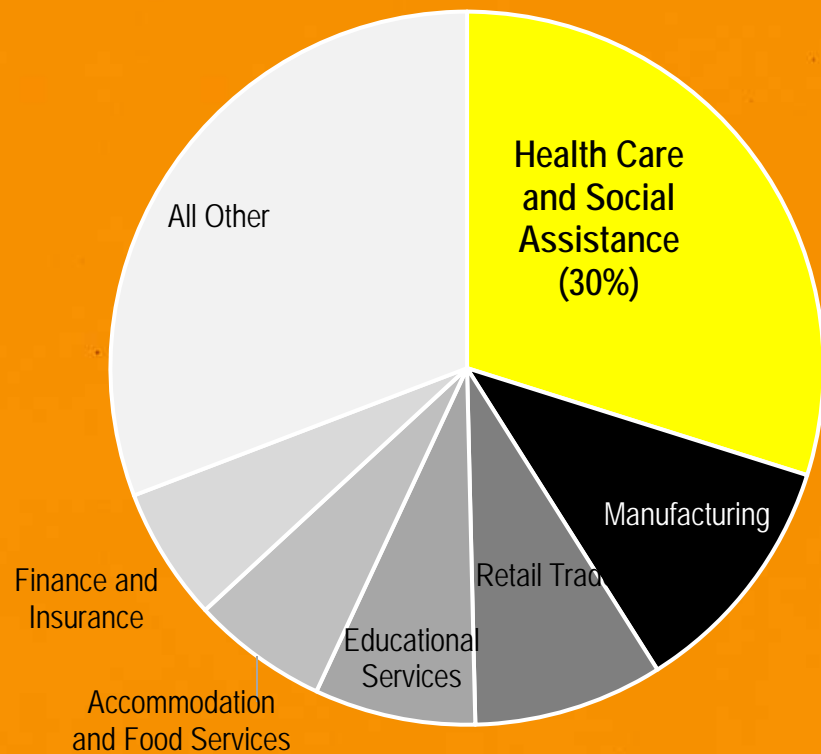


The Top Five Themes Mentioned with Transit by Business Leaders

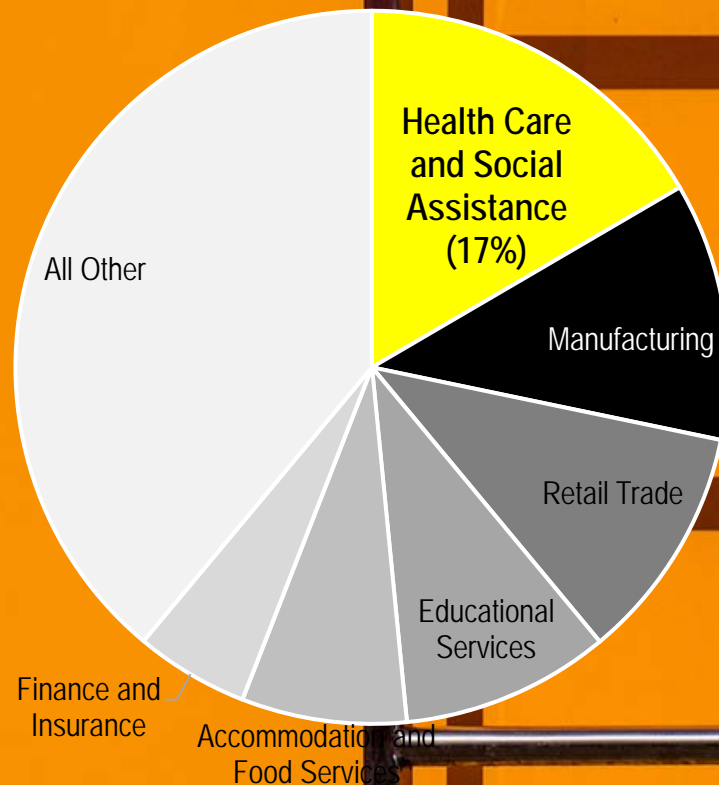


New Project on “Ladders of Opportunity”

• Job Vacancies in MN

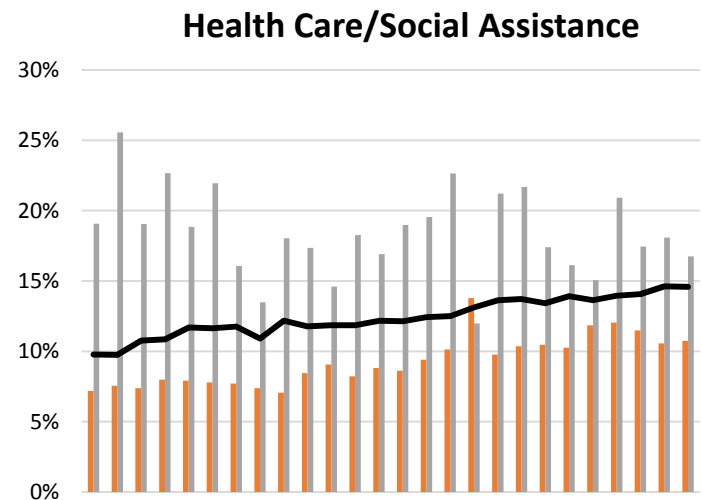
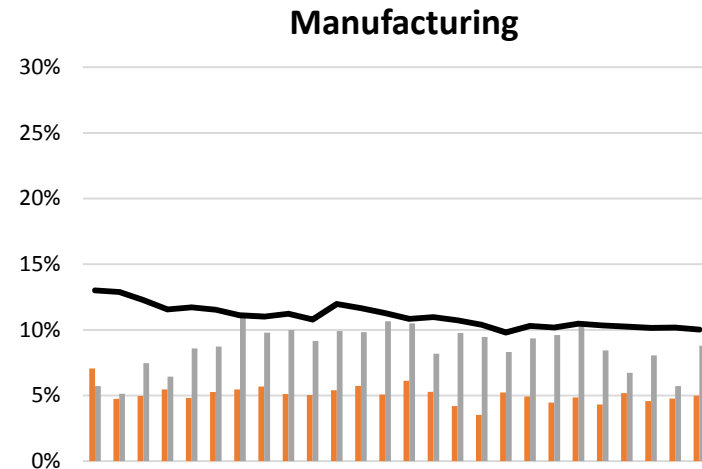
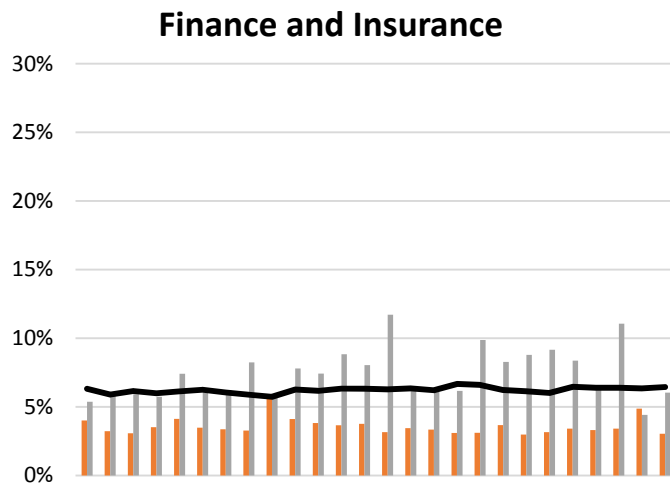


• Actual Jobs in MN



3 Key Sectors for Job Placement

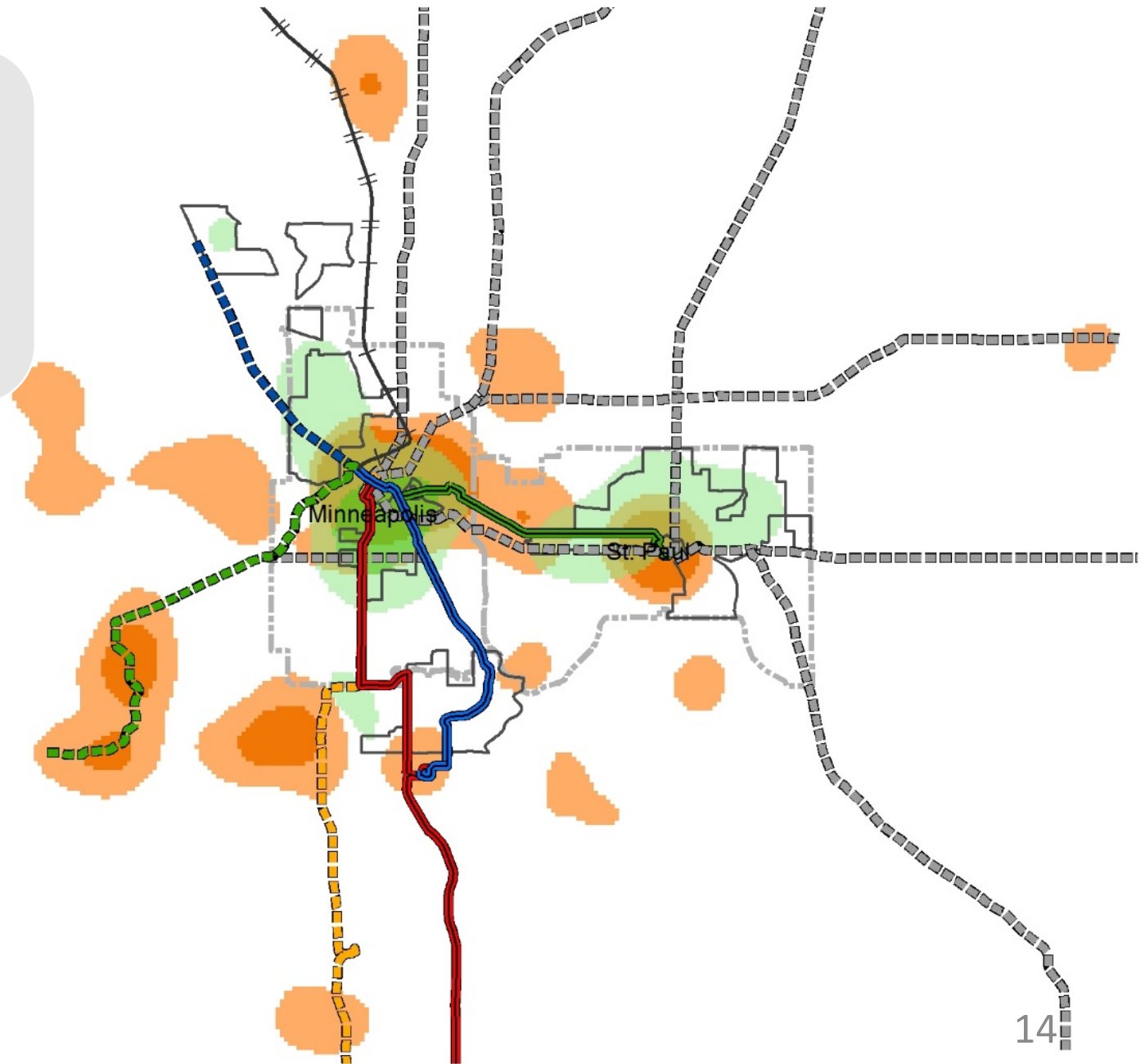
**Low Turnover &
Large Unmet Demand
(2001-2013)**



■ % of total new hires
 ■ % of total job vacancies
 — % of total employment

Unemployed, Job Vacancies, Planned Transit Corridors

Planned transit corridors, especially the Blue and Green Line Extensions, appear to make important connections.





Take-Away

yingling@umn.edu

cts.umn.edu/TIRP

1. Transit plays a key role supporting clusters.
2. For maximize transit's positive benefits, job creation and workforce development are especially important. Housing is important, too!
3. Planned transit corridors make important connections between unemployed people and job vacancies.