



**SOUTHWEST**  
Green Line LRT Extension

## METRO Green Line Extension Overview

March 20, 2019



EDEN PRAIRIE | MINNETONKA | EDINA | HOPKINS | ST. LOUIS PARK | MINNEAPOLIS

### Today's Topics

- Project Overview
- Project Partnerships / Decision-Making
- Civil Construction
- Light Rail Vehicles
- Business Community and Support
- Regional Transit Equity
- Communication and Outreach
- Next Steps

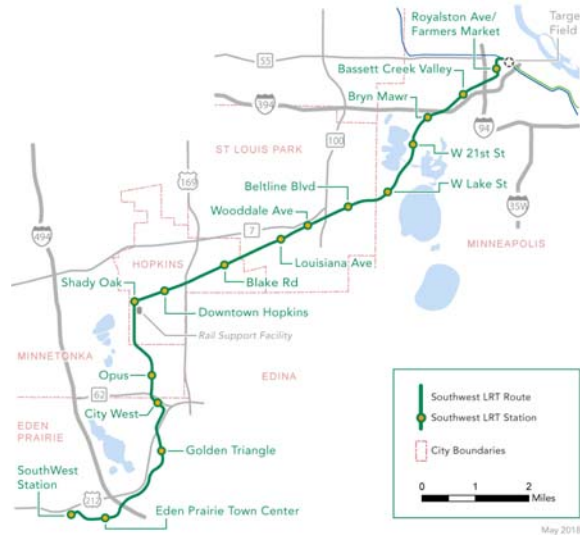


EDEN PRAIRIE | MINNETONKA | EDINA | HOPKINS | ST. LOUIS PARK | MINNEAPOLIS

2

## METRO Green Line Extension

- Opening in 2023
- 14.5 miles
- 16 stations
- Will provide single seat trips to downtown Minneapolis, U of M and St. Paul
- Connections to the Airport and Mall of America via the Blue Line



EDEN PRAIRIE | MINNETONKA | EDINA | HOPKINS | ST. LOUIS PARK | MINNEAPOLIS



3

## Project Milestones

- Sept 2011: FTA approves the project to begin Preliminary Engineering
- May 2012: Southwest Project Office opens
- Oct 2012: Hennepin County publishes DEIS
- Dec 2012: MC becomes the project lead with the transfer of Responsible Government Unit from Hennepin County
- Aug 2014: County & cities provide Municipal Consent
- May 2015: Supplemental DEIS published
- Sept 2015: County & cities provide second round of Municipal Consent for changes in the SDEIS

EDEN PRAIRIE | MINNETONKA | EDINA | HOPKINS | ST. LOUIS PARK | MINNEAPOLIS



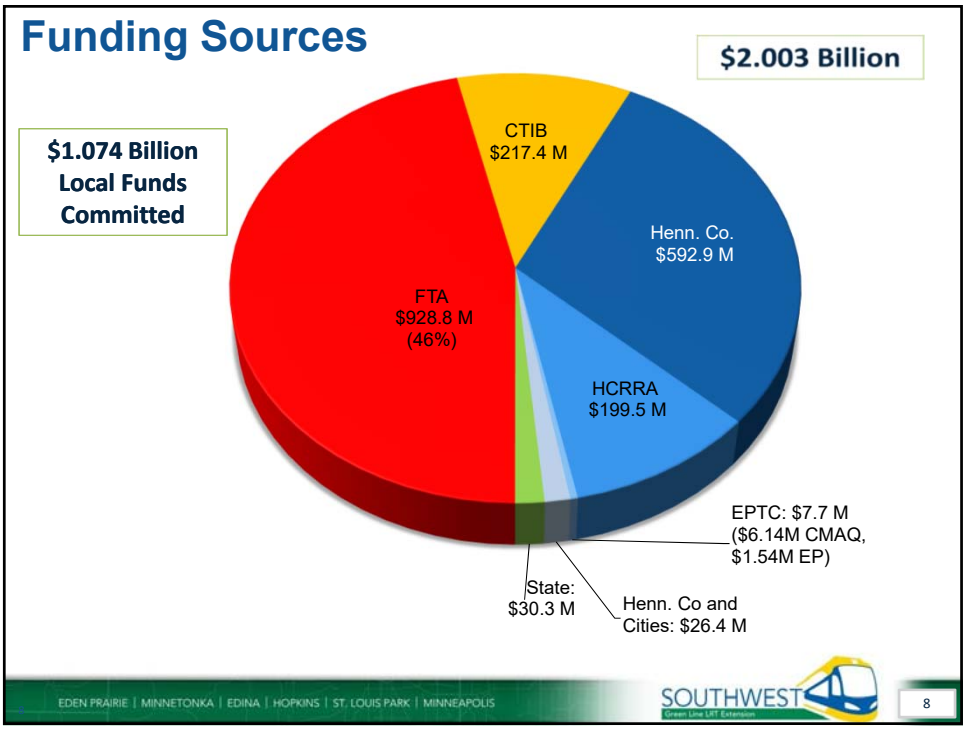
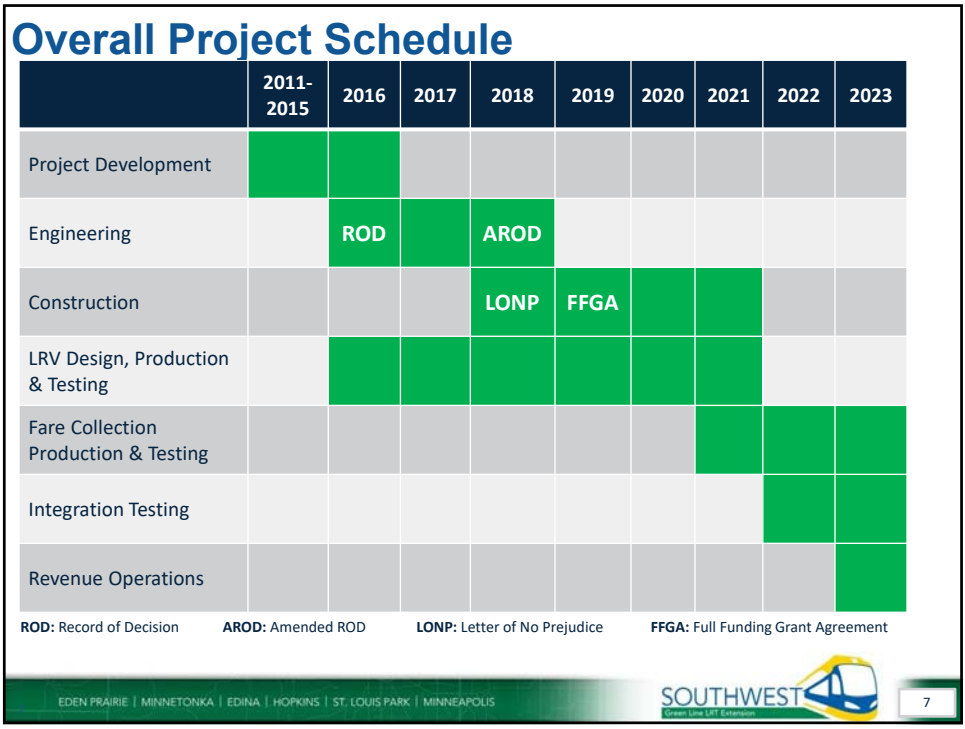
4

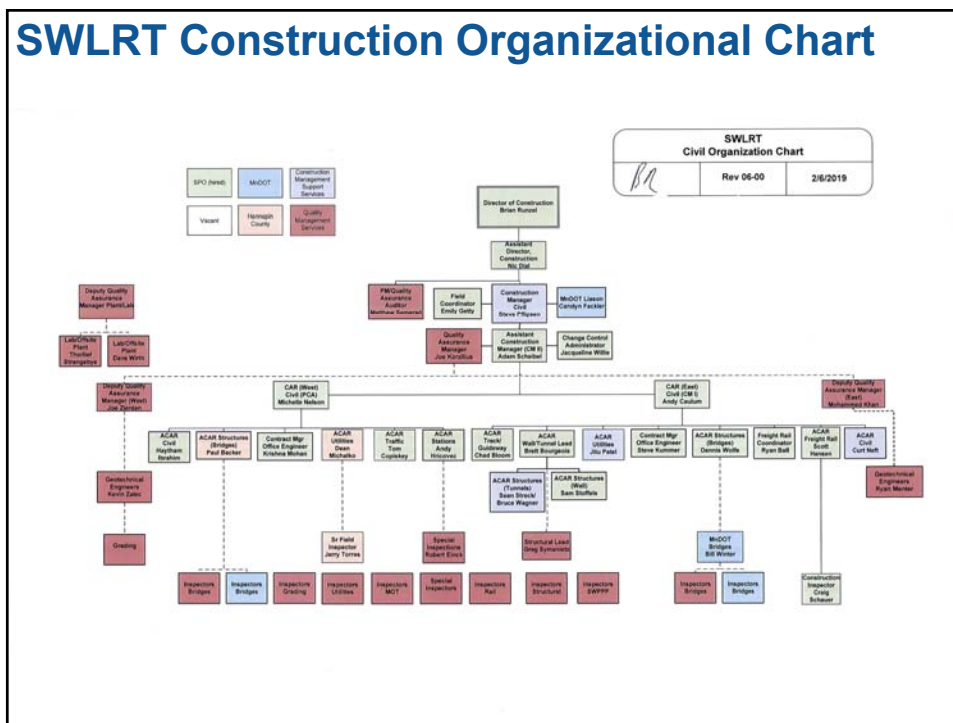
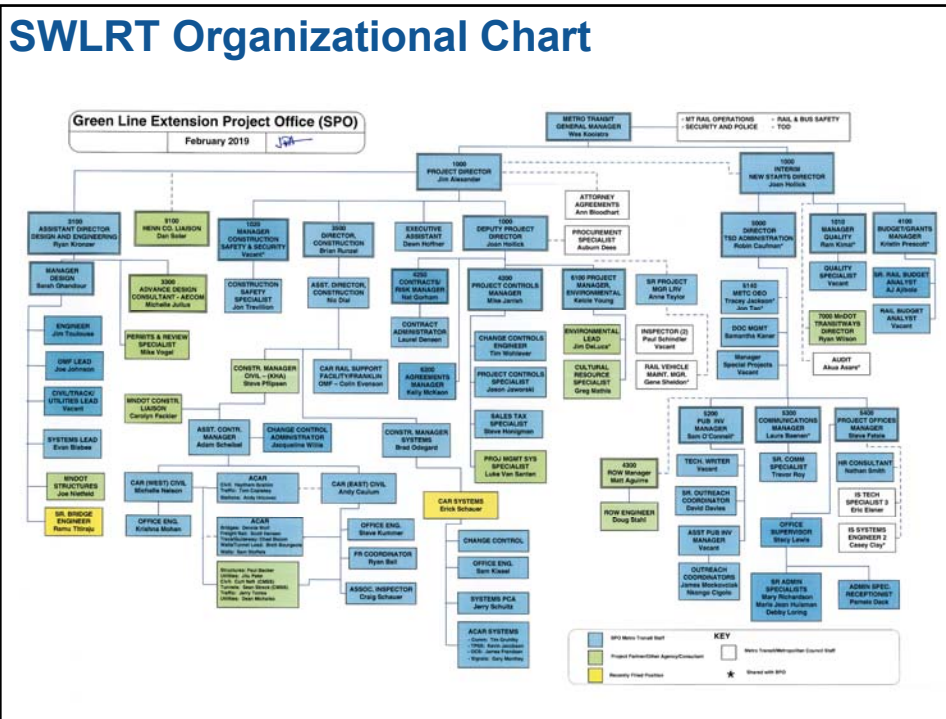
## Project Milestones

- May 2016: MC publishes FEIS
- July 2016: FTA issues Record of Decision (ROD)
- May 2018: FTA issues Amended ROD
- Nov 2018: FTA grants MC Letter of No Prejudice for civil construction to begin
- Nov 2018: MC awards Civil Contract LMJV
- Dec 2018: Civil contractor given Limited Notice to Proceed

## Nov 2018: SWLRT Groundbreaking!







## Project Partnerships and Decision-Making

EDEN PRAIRIE | MINNETONKA | EDINA | HOPKINS | ST. LOUIS PARK | MINNEAPOLIS



11

## LRT Projects Are Complex

- Project elements
  - Guideway
  - Stations and station access
  - Park and ride facilities
  - Pedestrian/bike facilities
  - Connecting bus facilities
  - Bridges
  - Tunnels
  - Roadway facilities
  - Rail support facilities
  - System elements
  - Landscaping

EDEN PRAIRIE | MINNETONKA | EDINA | HOPKINS | ST. LOUIS PARK | MINNEAPOLIS



12



## Local Project Partners


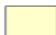

- Hennepin County/Hennepin County Regional Railroad Authority
- Cities of Eden Prairie, Minnetonka, Hopkins, St. Louis Park, Minneapolis
- MnDOT
- Three Rivers Park District, Minneapolis Park Board
- Riley Purgatory, Nine Mile, Minnehaha, and Bassett Creek Watershed Districts

## SWLRT Technical Issues

Revision 04: 28 May 2013

### Technical Issues:

1. Eden Prairie Alignment
2. Nine Mile Creek Crossing
3. Golden Triangle Station
4. Shady Oak Road & TH 212 Crossing
5. City West Station & TH 62 Crossing
6. Opus Station
7. Opus Hill/Minnetonka-Hopkins Bridge
8. Shady Oak Station

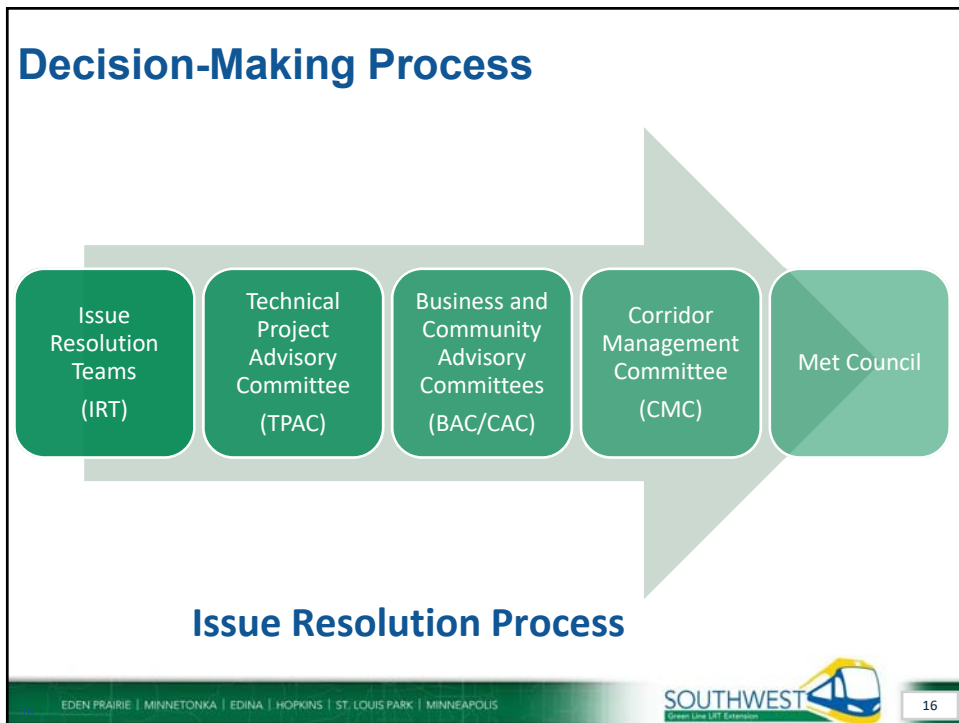
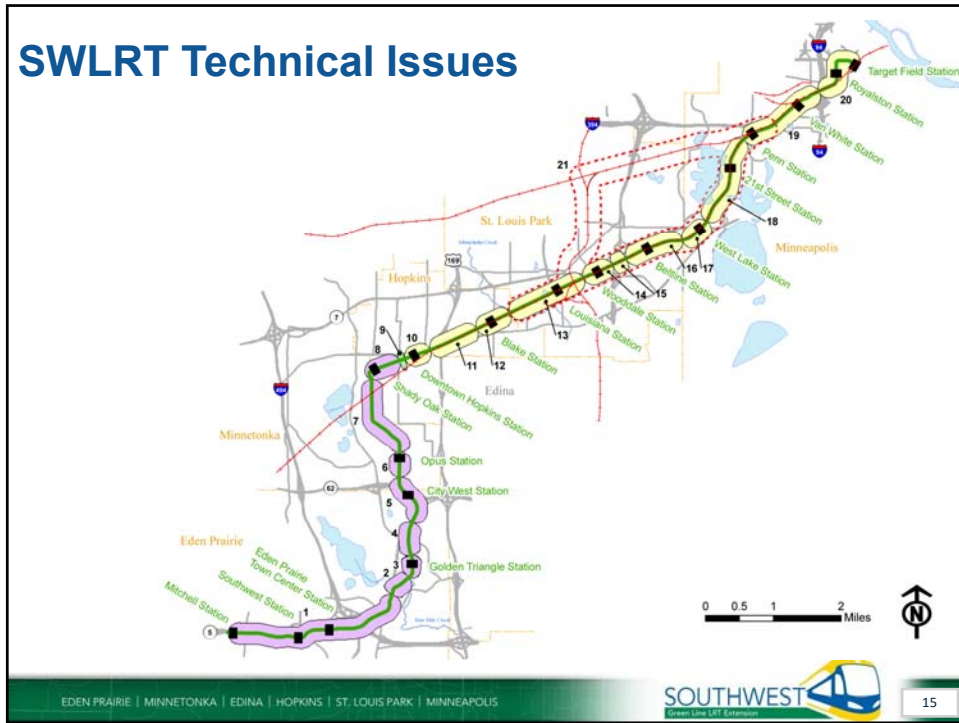
-  PEC West
-  PEC East
-  Joint PEC West/PEC East

### 9. PEC West/PEC East Interface Point

10. Downtown Hopkins Station
11. Excelsior Blvd. Crossing
12. Blake Station
13. Louisiana Station
14. Wooddale Station
15. TH 100
16. Bellline Station
17. West Lake Station
18. Kenilworth Corridor
19. Bassett Creek Valley Corridor
20. Royalston Station/Interchange Project Coordination
21. Freight Rail Co-location/Relocation Alternatives

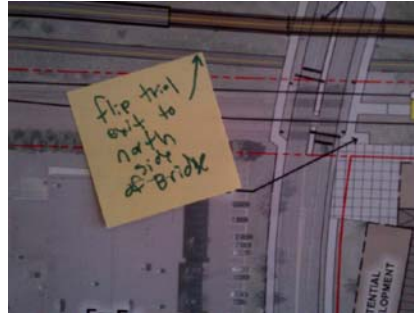
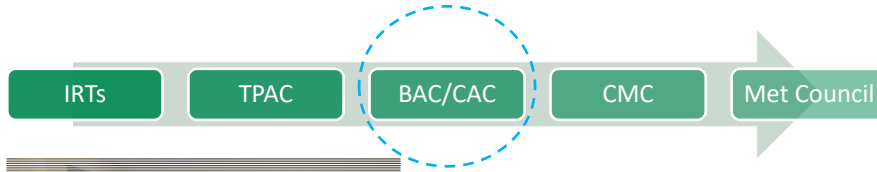
### System-wide Technical Issues (not shown):

22. Traction Power Substation and Signal Bungalow Locations
23. Operation & Maintenance Facility (OMF) Location
24. Park & Ride, Kiss & Ride and Bus Layover Locations
25. Trails and LRT Interface Coordination





## Business & Community Advisory Committees

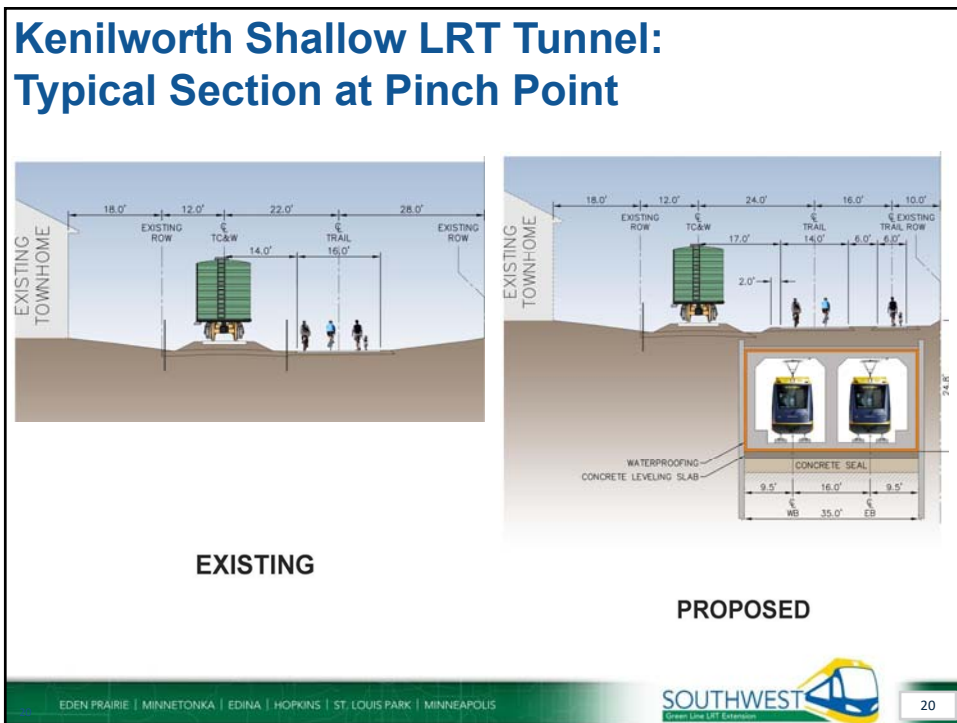
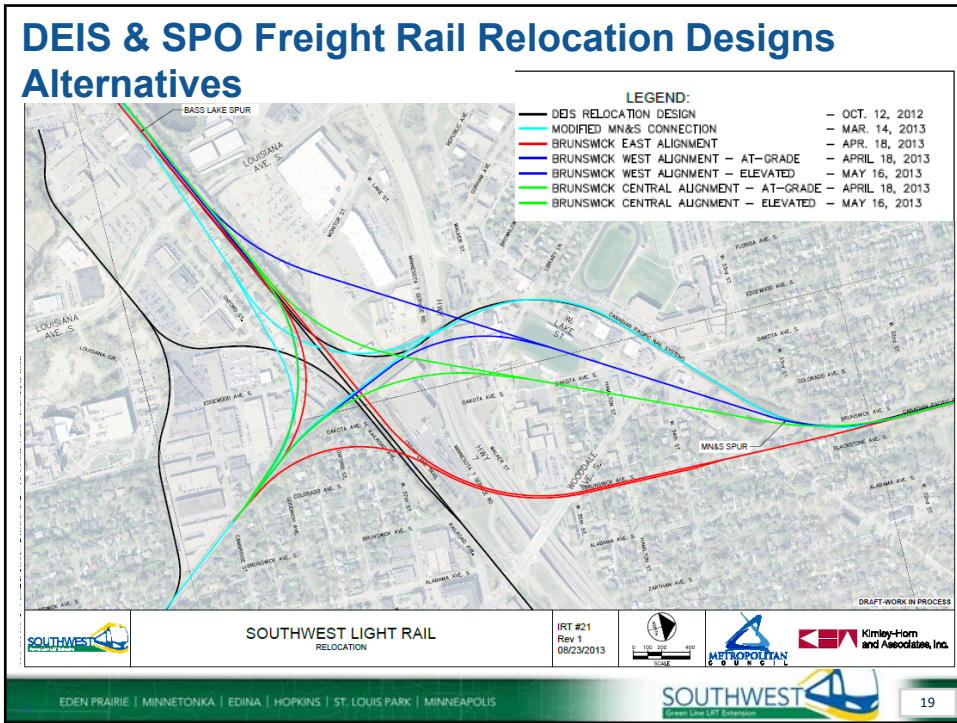


Advisory committee discussion and input

## Corridor Management Committee

- SWLRT Corridor Management Committee advises the Metropolitan Council on all issues relating to the design and construction of the rail line





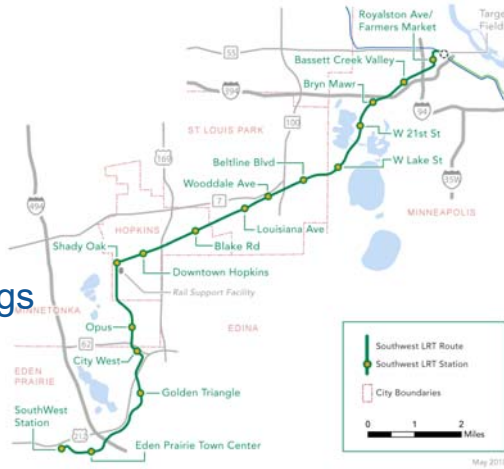
# Civil Construction

# LRT Construction Sequencing



## Civil Construction Scope: LMJV \$799.5M

- 16 new stations
- 44 structures
  - 29 new bridges: LRT, pedestrian, roadway, freight
  - 7 existing bridges with modifications
  - 6 pedestrian tunnels
  - 2 cut and cover tunnels:
    - TH62 582 ft., Kenilworth 2,236 ft.
- 15 at-grade LRT crossings
- Over 100 retaining walls
- LRT & freight rail track: ~182,000 TF
- 7.8 mi shared LRT and freight rail corridor



EDEN PRAIRIE | MINNETONKA | EDINA | HOPKINS | ST. LOUIS PARK | MINNEAPOLIS



23

## SWLRT Project Overview

- 16 Stations
  - Vertical circulation
    - West Lake Street
    - Bryn Mawr
    - Bassett Creek Valley



## West Lake Station



EDEN PRAIRIE | MINNETONKA | EDINA | HOPKINS | ST. LOUIS PARK | MINNEAPOLIS



24



## SWLRT Project Overview

- Park-and-rides with 2,700 spaces
  - 7 surface lots
  - 1 structure at SouthWest Station with 2 elevators



SouthWest Station



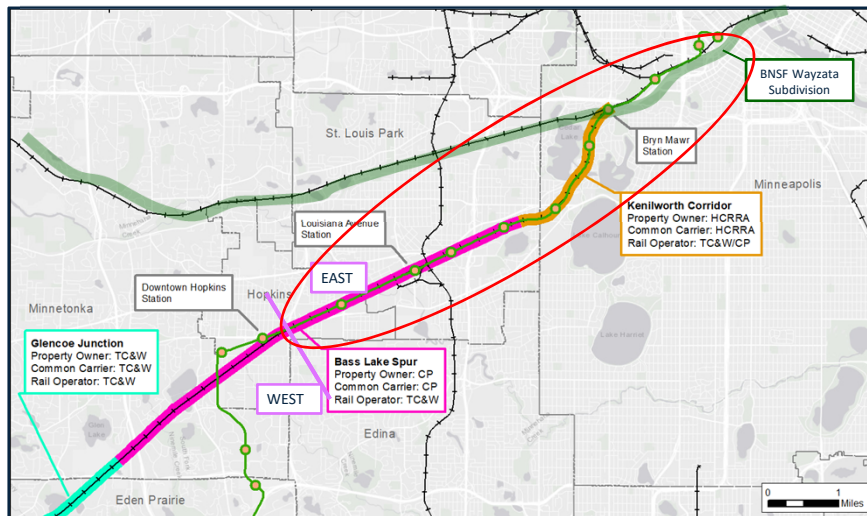
Louisiana Station



EDEN PRAIRIE | MINNETONKA | EDINA | HOPKINS | ST. LOUIS PARK | MINNEAPOLIS



## SWLRT Project Overview Freight Rail Corridor



EDEN PRAIRIE | MINNETONKA | EDINA | HOPKINS | ST. LOUIS PARK | MINNEAPOLIS



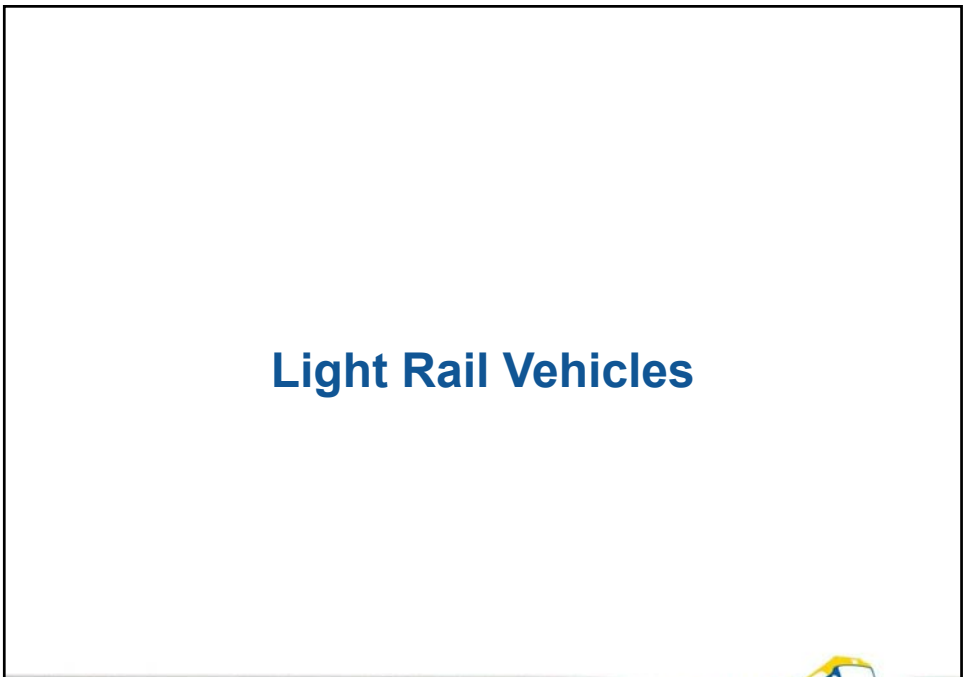
## SWLRT Project Overview: Systems Construction

- Scope:
  - 20 traction power substations
  - Overhead contact system
  - Tunnel facilities
  - Communications
  - Wayside signaling system
- 2019 Schedule:
  - Feb 20: Issues Invitation for Bids
  - Mar 19: Pre-bid Meeting
  - May 21: Bids Due
  - Q3: Award Contract




EDEN PRAIRIE | MINNETONKA | EDINA | HOPKINS | ST. LOUIS PARK | MINNEAPOLIS

## Light Rail Vehicles



EDEN PRAIRIE | MINNETONKA | EDINA | HOPKINS | ST. LOUIS PARK | MINNEAPOLIS



28



## Light Rail Vehicles

- 27 vehicles
- Siemens contract: \$121.1M
- First LRV delivery: Q3 2020
- Last LRV delivery: Q4 2021



EDEN PRAIRIE | MINNETONKA | EDINA | HOPKINS | ST. LOUIS PARK | MINNEAPOLIS



29

## Light Rail Vehicles: "C" Car Modifications

"A" Section

"C" Section

"B" Section



EDEN PRAIRIE | MINNETONKA | EDINA | HOPKINS | ST. LOUIS PARK | MINNEAPOLIS



30

### Type II Design



### Type III Design



### March 8, 2017 TAAC Workshop

- Location: Blue Line Operations & Maintenance Facility
- Purpose: Mock-Up of Modified “C” Car Design



## Business Community and Support

EDEN PRAIRIE | MINNETONKA | EDINA | HOPKINS | ST. LOUIS PARK | MINNEAPOLIS



33

## Business Community Interest & Support

- Over 200 people at SWLRT Contractor Open House



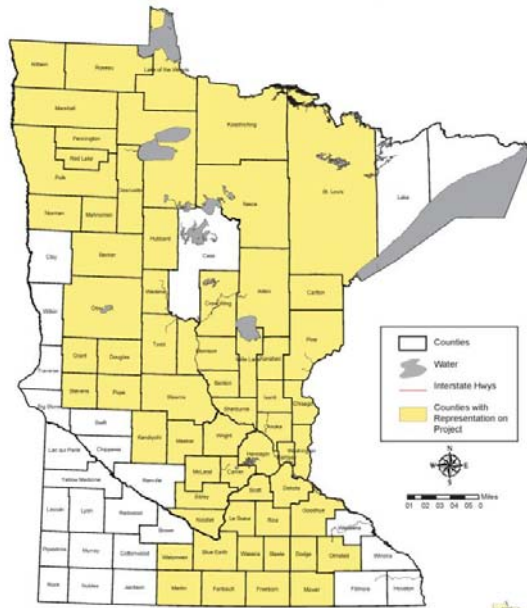
EDEN PRAIRIE | MINNETONKA | EDINA | HOPKINS | ST. LOUIS PARK | MINNEAPOLIS



34

## Green Line Construction Workers: Home Counties

\$256 million Green Line payroll benefits communities statewide



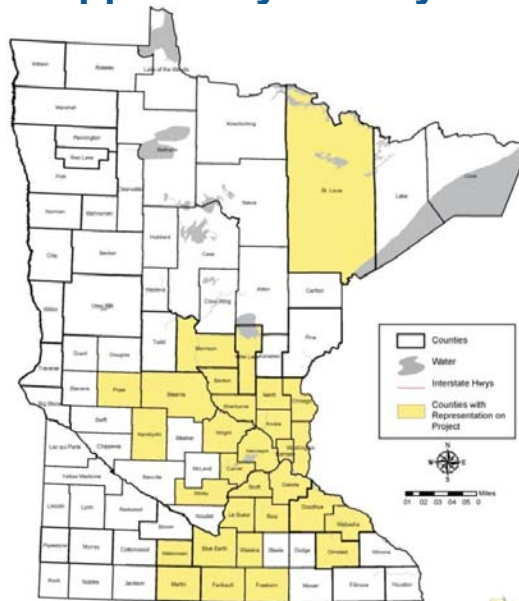
EDEN PRAIRIE | MINNETONKA | EDINA | HOPKINS | ST. LOUIS PARK | MINNEAPOLIS



35

## Green Line Subs and Suppliers by County

- Examples
  - Aggregate Industries
  - Amcon Construction
  - Bituminous Roadways
  - Hardrives
  - Safety Signs



EDEN PRAIRIE | MINNETONKA | EDINA | HOPKINS | ST. LOUIS PARK | MINNEAPOLIS



36



## SWLRT Civil Construction DBE Goals

- DBE goal: 16%
- LMJV's DBE commitment: 16.17%
- Good faith efforts
- Monthly utilization reporting
- Site visits



EDEN PRAIRIE | MINNETONKA | EDINA | HOPKINS | ST. LOUIS PARK | MINNEAPOLIS



37

## Civil Construction Workforce Goals

- Hennepin County workforce goal:
  - 20% female
  - 32% people of color
- Good faith efforts
- Monthly utilization reporting
- Workforce site visits
- Construction career fair events



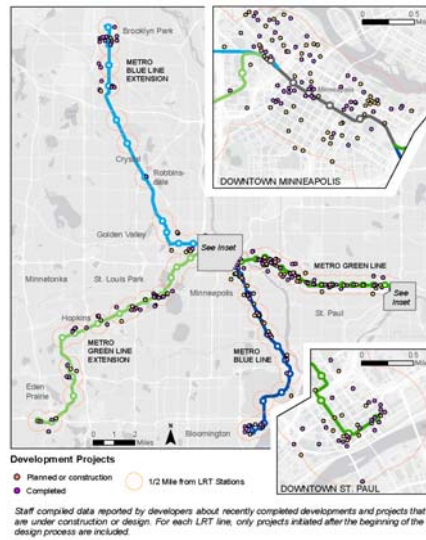
EDEN PRAIRIE | MINNETONKA | EDINA | HOPKINS | ST. LOUIS PARK | MINNEAPOLIS



38

## Development Along LRT: \$8.4+ Billion

- \$5.8 billion along Green Line
- \$1.0+ billion development planned or underway along Southwest LRT
- \$522 million development planned or underway along Blue Line Extension
- \$1.0+ billion compiled for projects along Blue Line



## Regional Transit Equity



## SWLRT and Equity

- Race and Ethnicity:
  - SWLRT corridor as a whole is generally more diverse than the seven-county Twin Cities metro area
  
- Income:
  - Nearly one-third of households in the corridor have incomes less than 60 percent of the median income
  
  - Roughly one-fifth of the corridor population have family incomes less than 150 percent of the federal poverty threshold

EDEN PRAIRIE | MINNETONKA | EDINA | HOPKINS | ST. LOUIS PARK | MINNEAPOLIS



41

## SWLRT and Equity

- Percentage of households along the SWLRT route with income less than 60% of median income
  - Twin Cities Region: 27%
  - SWLRT Corridor: 29%
    - SouthWest: 12%
    - Eden Prairie Town Center: 27%
    - Golden Triangle: 27%
    - City West: 13%
    - Opus: 25%
    - Shady Oak: 32%
    - Downtown Hopkins: 37%
    - Blake Rd: 33%
    - Louisiana Ave: 25%
    - Wooddale Ave: 27%
    - Beltline Blvd: 26%
    - West Lake St: 20%
    - 21st St: 17%
    - Bryn Mawr: 25%
    - Bassett Creek Valley: 47%
    - Royalston Ave/Farmers Market: 41%

EDEN PRAIRIE | MINNETONKA | EDINA | HOPKINS | ST. LOUIS PARK | MINNEAPOLIS



42

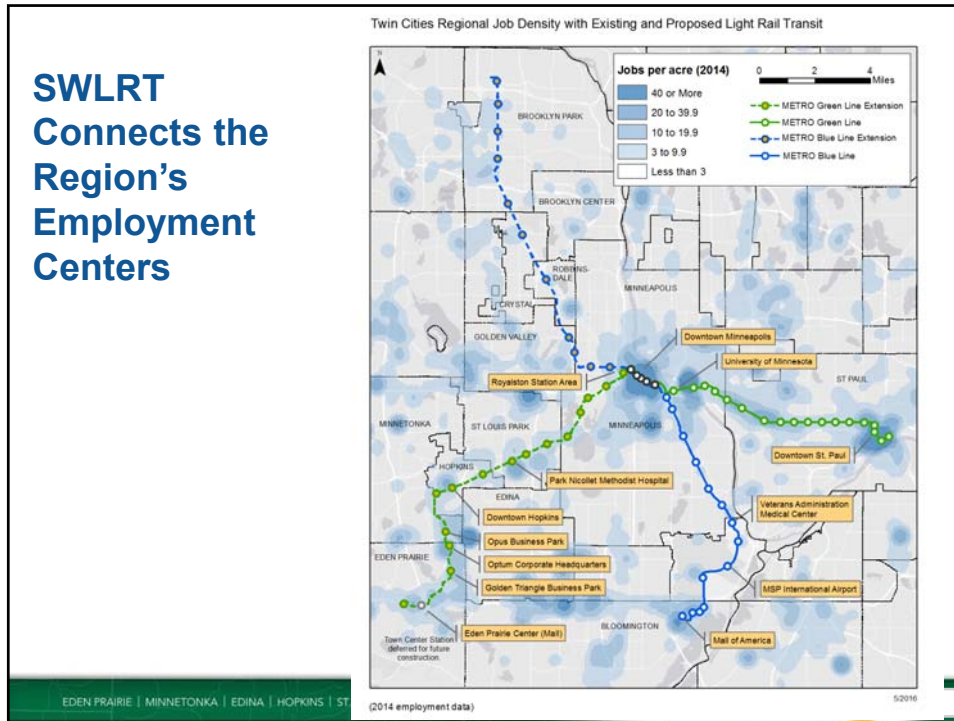
## SWLRT and Equity

- Percentage of people along the SWLRT route with income less than 150% of poverty threshold
  - Twin Cities Region: 17%
  - SWLRT Corridor: 20%
    - SouthWest: 15%
    - Eden Prairie Town Center: 19%
    - Golden Triangle: 11%
    - City West: 6%
    - Opus: 19%
    - Shady Oak: 23%
    - Downtown Hopkins: 27%
    - Blake Rd: 27%
    - Louisiana Ave: 18%
    - Wooddale Ave: 17%
    - Beltline Blvd: 14%
    - West Lake St: 11%
    - 21st St: 7%
    - Bryn Mawr: 17%
    - Bassett Creek Valley: 33%
    - Royalston Ave/Farmers Market: 33%

## SWLRT and Equity

- Higher concentrations of minority residents are found near LRT stations throughout the corridor
- Station areas where the proportion of minority residents exceeds the regional average include:
  - Target Field: 37%
  - Royalston/Farmers Market: 41%
  - Bassett Creek Valley: 42%
  - Blake Rd: 38%
  - Downtown Hopkins: 28%
  - Opus: 26%
  - Eden Prairie Town Center: 49%
  - Southwest: 49%

## SWLRT Connects the Region's Employment Centers



## SWLRT Equity Commitments

- Work with community organizations, technical & community colleges, unions to grow the qualified workforce and meet hiring goals
- Include community-based groups in transit service planning prior to revenue service
- Advocate for a dedicated transit sales tax to grow the transit system
- Help facilitate the resolution of land use differences around the Bassett Creek Valley Station

## Communication and Outreach

EDEN PRAIRIE | MINNETONKA | EDINA | HOPKINS | ST. LOUIS PARK | MINNEAPOLIS



47

## Transit Projects Engage Many Stakeholders



EDEN PRAIRIE | MINNETONKA | EDINA | HOPKINS | ST. LOUIS PARK | MINNEAPOLIS



48

## Many, Many, Stakeholders

Residents weigh in as Met Council nears key decisions for SW light rail line

by Brandt Williams, Minnesota Public Radio

July 15, 2013

AUDIO

Residents weigh in as Met Council nears key decisions for SW light rail line (feature audio)

MINNEAPOLIS – Some Minneapolis residents who live near a proposed light rail line are becoming increasingly worried as the Metropolitan Council gets closer to making crucial decisions.

This week, the Met Council will present a set of cost estimates for the Southwest light rail line at a pair of public meetings. And some fear one cost of the new light rail line will be the degradation of valuable trails and park land.



EDEN PRAIRIE | MINNETONKA | EDINA | HOPKINS | ST. LOUIS PARK | MINNEAPOLIS



49

- **Eden Prairie & Minnetonka**

- James Mockovciak
- James.Mockovciak@metrotransit.org
- 612-373-3894

- **Hopkins, St. Louis Park & Edina**

- Nkongo Cigolo
- Nkongo.Cigolo@metrotransit.org
- 612-373-3825

- **Minneapolis**

- David Davies
- David.Davies@metrotransit.org
- 612-373-5336



<p><b>Eden Prairie &amp; Minnetonka</b></p> <p>Stations: Opus, City West, Golden Triangle, Eden Prairie Town Center, SouthWest</p>  <p>James Mockovciak 612-373-3894 James.Mockovciak@metrotransit.org</p>	<p><b>Hopkins, St. Louis Park &amp; Edina</b></p> <p>Stations: Siskine Blvd, Wooddale Ave, Louisiana Ave, Blake Rd, Downtown Hopkins, Shady Oak</p>  <p>Nkongo Cigolo 612-373-3825 Nkongo.Cigolo@metrotransit.org</p>	<p><b>Minneapolis</b></p> <p>Stations: Royaston Ave/ Farmers Market, Bassett Creek Valley, Bryn Mawr, West 21st St, West Lake St</p>  <p>David Davies 612-373-5336 David.Davies@metrotransit.org</p>
---	--	---

www.SWLRT.org      swlrt@metrotransit.org      612-373-3888

EDEN PRAIRIE | MINNETONKA | EDINA | HOPKINS | ST. LOUIS PARK | MINNEAPOLIS



50



## Outreach Innovation: Mobile Office



## Construction Outreach & Communication

- Best Practices:
  - Advisory committees
  - Construction open houses & community meetings
  - “What to Expect During Construction”
  - 24-hour hot line
  - Signage
  - Video/animation
  - Door-to-door canvassing
  - Project website
  - Media briefings





## Construction Outreach & Communication

- New outreach activities
  - Mobile-friendly web tool
  - Social media
  - Public tours
  - Mobile office
  - Time lapsed photography
  - Pop-up events



## Next Steps

## FTA Full Funding Grant Agreement (FFGA)

- SWLRT is rated a “Medium-High” by the FTA
- All non-federal funding committed
  - \$1.074B in local funds committed
- All critical 3rd party agreements signed
- Meet FTA’s readiness requirements:
  - Technical: Determined the Project meets technical requirements
  - Financial: FTA completing Financial Capacity Assessment
- Federal funding appropriated by Congress

## More Information

Online:

[SWLRT.org](http://SWLRT.org)

Twitter:

[@southwestlrt](https://twitter.com/southwestlrt)

Email:

[SWLRT@metrotransit.org](mailto:SWLRT@metrotransit.org)

