

SOUTHWEST

Green Line LRT Extension



Project Update

March 17, 2021



EDEN PRAIRIE | MINNETONKA | EDINA | HOPKINS | ST. LOUIS PARK | MINNEAPOLIS

Today's Topics

- Project Update
- Construction Update
- 2021 Construction Look Ahead
- Light Rail Vehicles
- Real Estate Update
- DBE & Workforce
- Communications & Outreach

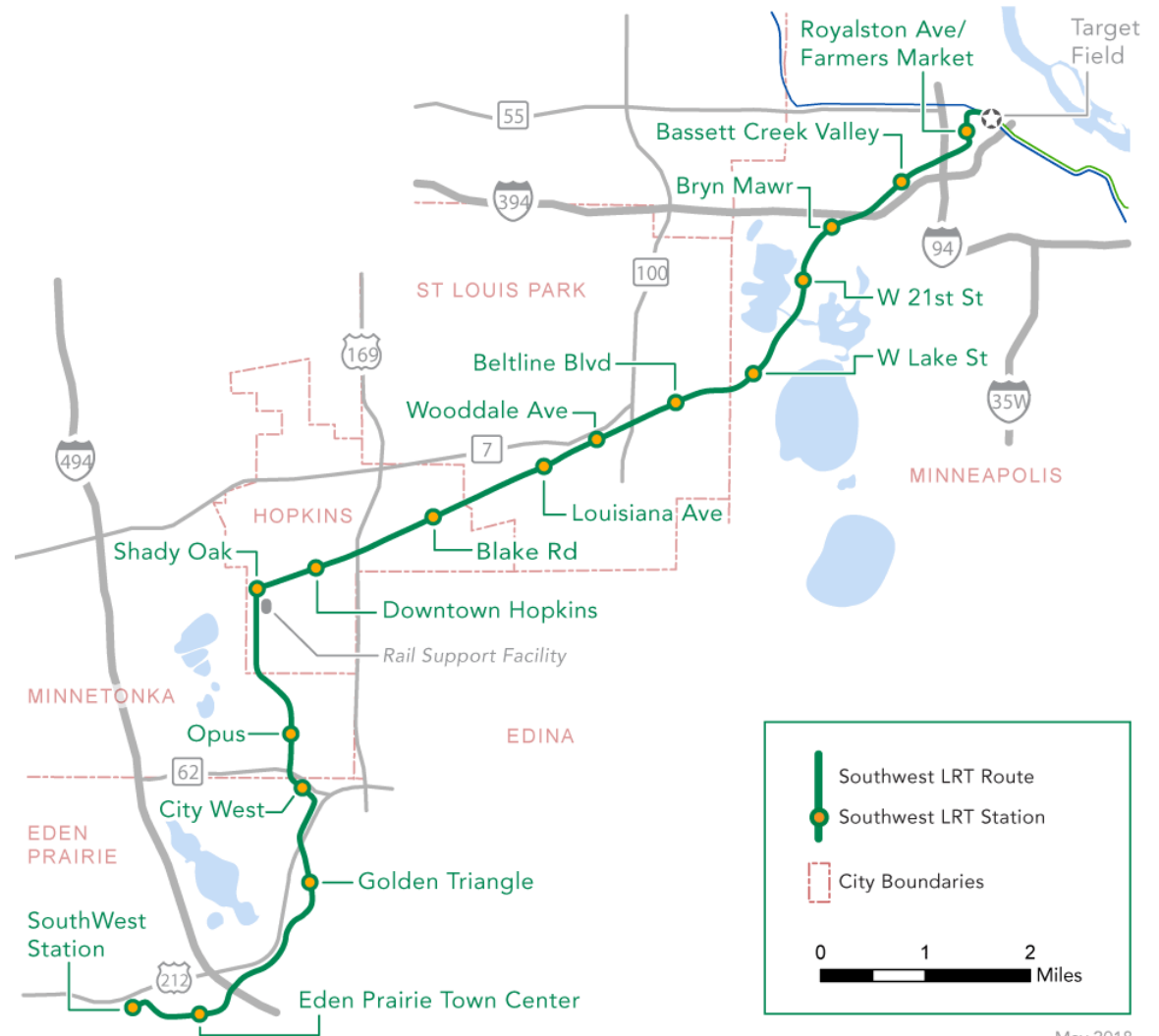


Project Update

Jim Alexander
SWLRT Project Director

METRO Green Line Extension

- 14.5 miles
- 16 stations
- Will provide single seat trips to downtown Minneapolis, U of M and St. Paul
- Connections to the Airport and Mall of America via the Blue Line



May 2018

Construction Update

2020 Construction Highlights

- Received FFGA on September 14
- Civil construction: 35% complete
- Under construction:
 - 8 stations underway out of 16
 - 23 bridges underway or completed out of 29
 - 5 tunnels underway out of 8
 - 47% of retaining wall work completed: 127 walls total
- 94% of 946 private utilities completed
- 65% of nearly 1,300 public utilities completed
- Completed all 15 building demolitions
- Systems mobilized and in design and procurement
- Franklin O&M Facility modifications: 40% complete
- 11 LRVs delivered

LRT Construction Sequencing



Utilities

- Excavation
- Relocation / installation



Site Prep

- Clear buildings
- Establish work zones, detours



Structures, Track, Stations

- Bridges, Tunnels, Walls
- Track
- Buildings
- Roads/Trails



Systems

- Overhead catenary
- Safety & security
- Ticket vending



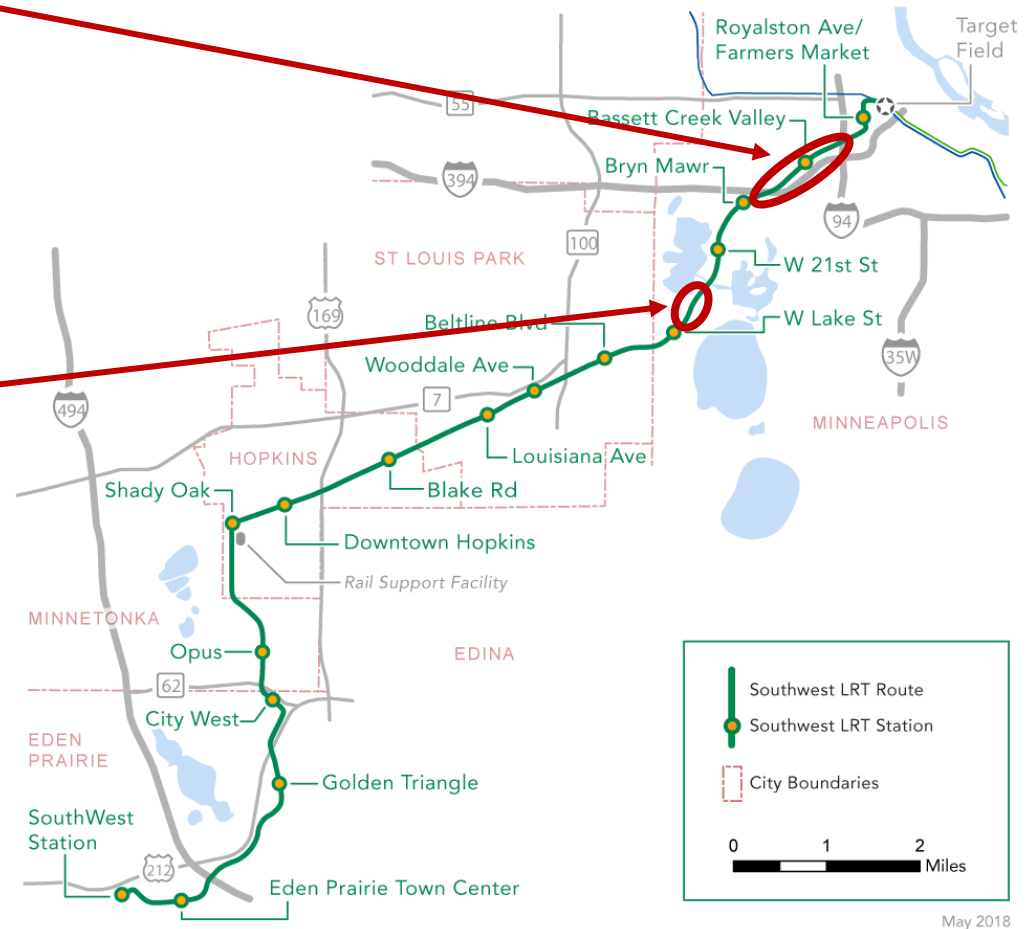
Testing

- Safety
- Communications
- Operator training

Outreach & Communications

Construction Challenges - Key Issues

- Corridor Protection Wall
 - Required per BNSF agreement
 - Required environmental clearance which was completed after civil construction contracting
 - Adding to the Civil Construction Contract by change order
- Secant Wall
 - Unforeseen soil conditions (settling during initial tunnel construction) necessitated an alternative construction method
 - Taking this approach out of an abundance of caution
 - Adding to the Civil Construction Contract by change order
- These elements will impact the project schedule

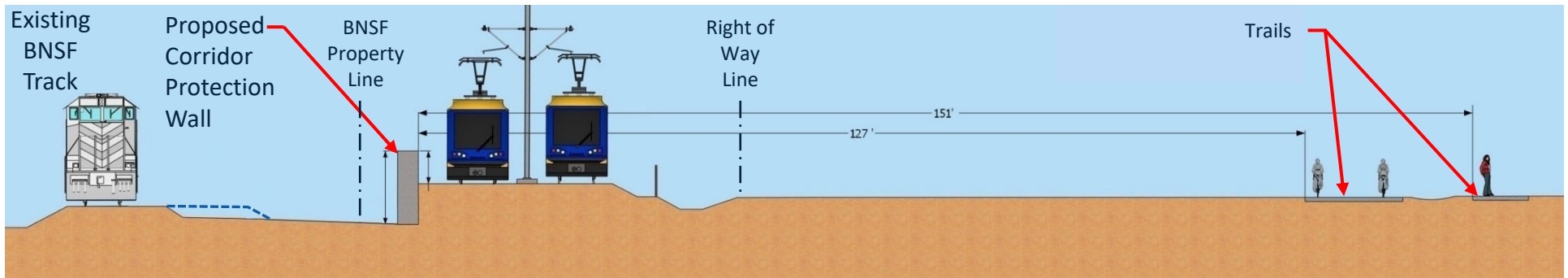


May 2018

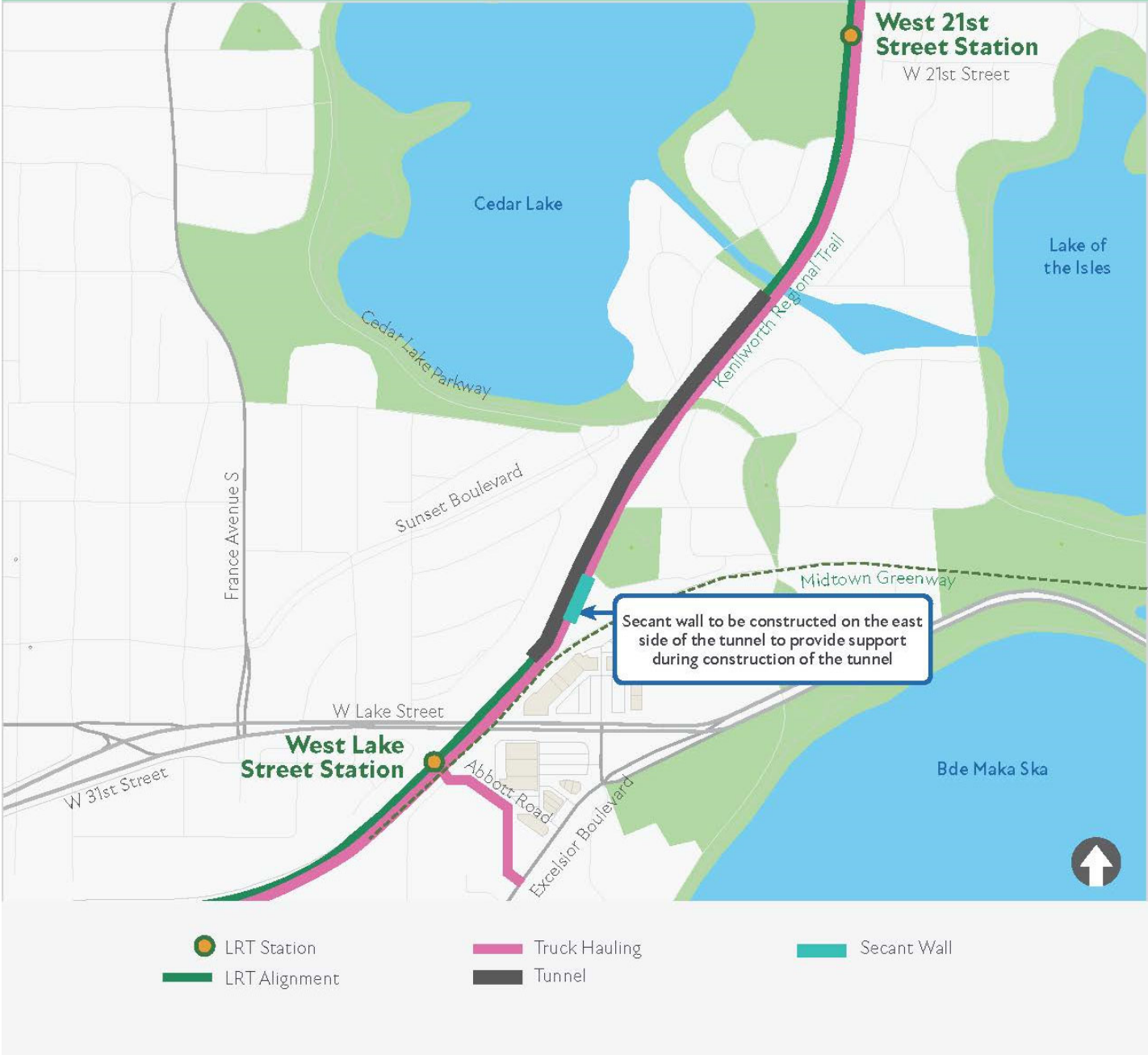
Corridor Protection Wall



Example of section near Bryn Mawr Meadows



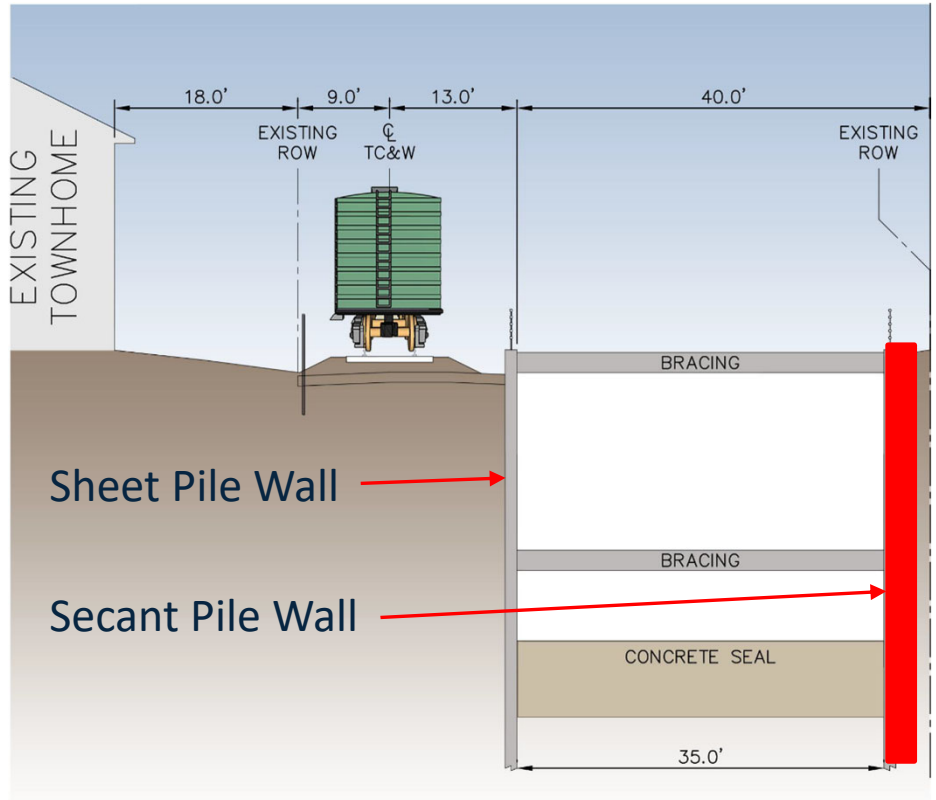
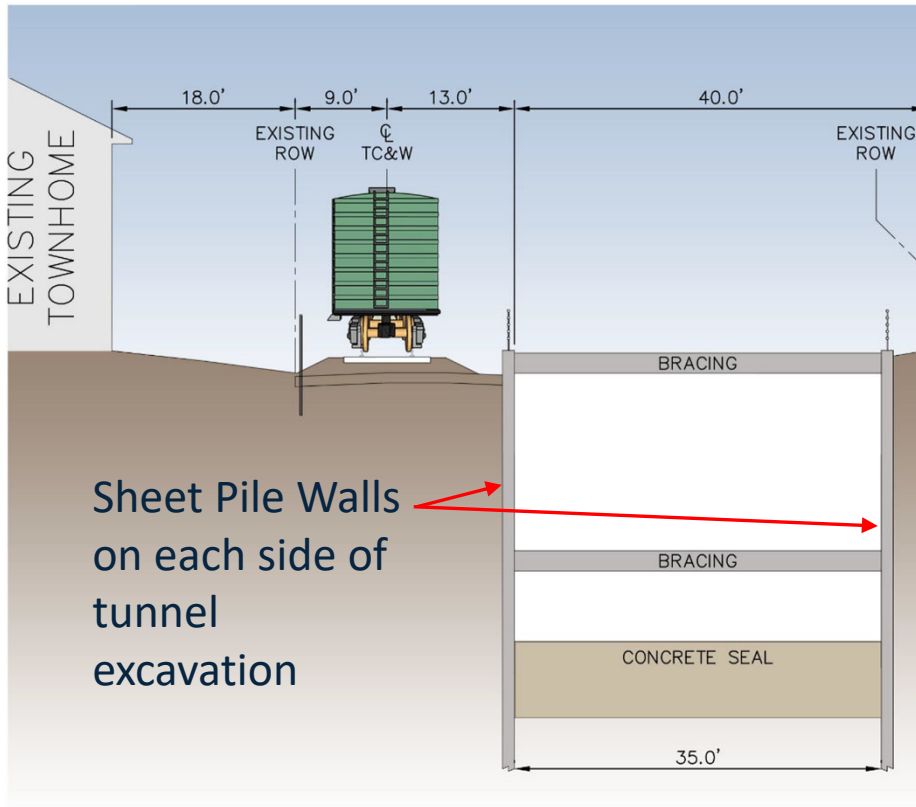
Secant Pile Wall



Kenilworth Tunnel Construction

Original Plan

Modified Plan at Cedar Isles Condominium and Parking Ramp



Sheet Pile Walls on each side of tunnel excavation

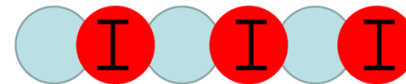
Sheet Pile Wall

Secant Pile Wall

Sheet Pile Wall in Plan View



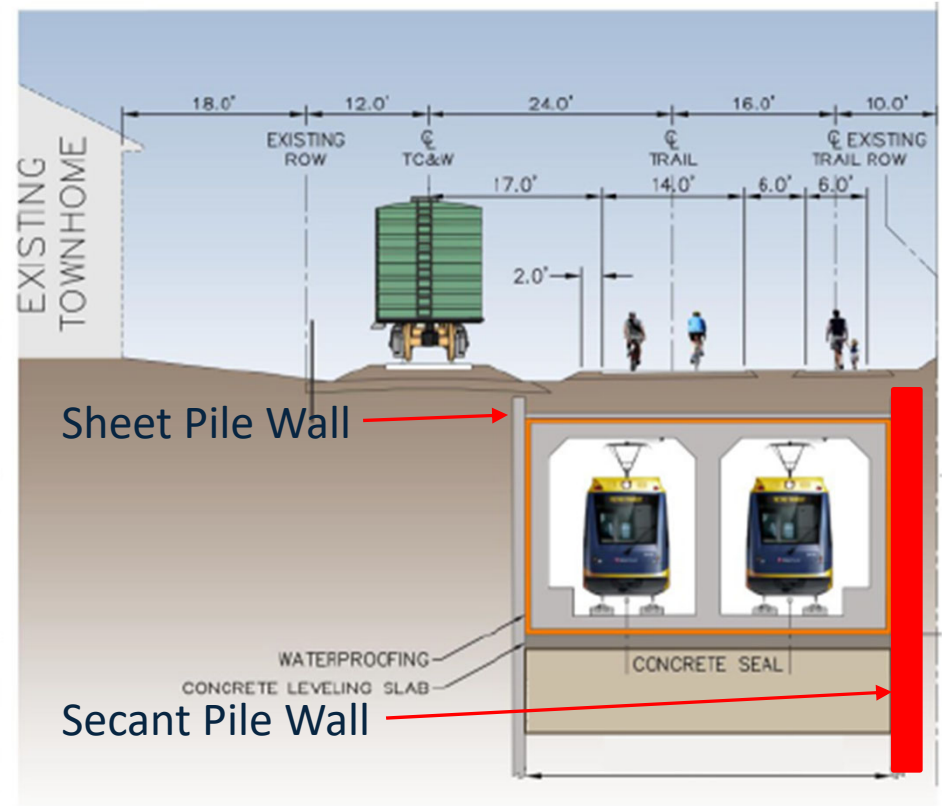
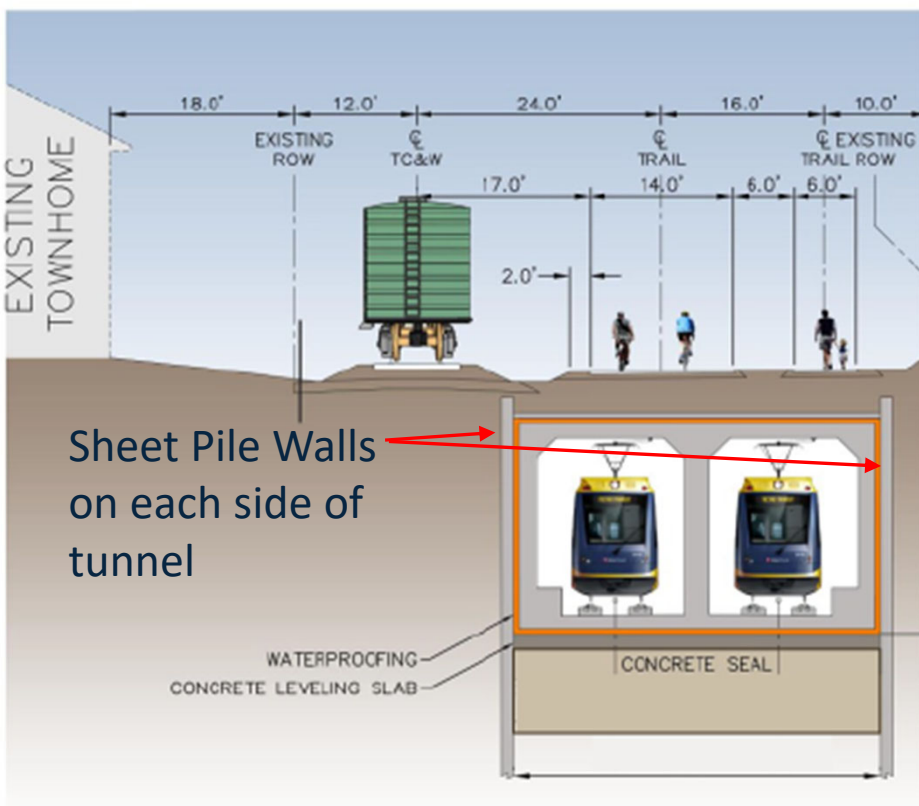
Secant Pile Wall in Plan View



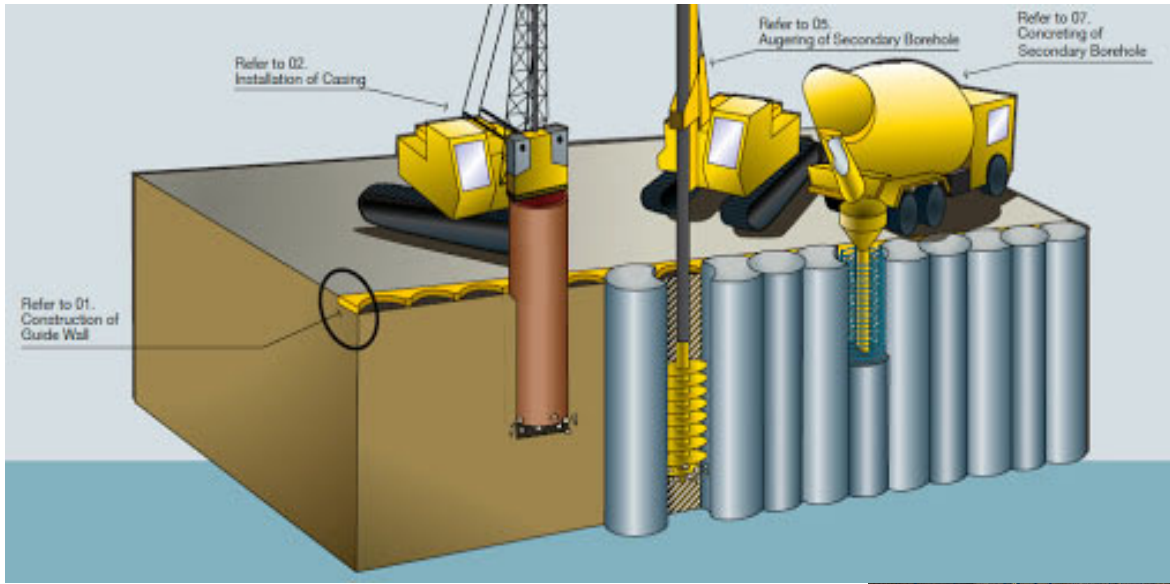
Kenilworth Tunnel Construction

Original Plan

Modified Plan at Cedar Isles Condominium and Parking Ramp



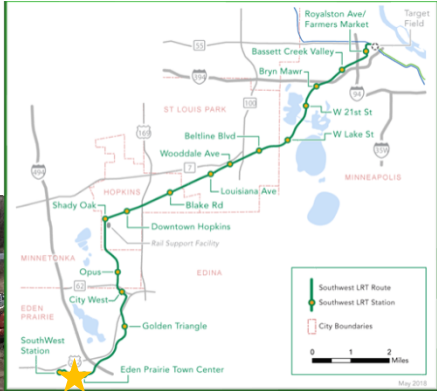
Example of Secant Wall Construction



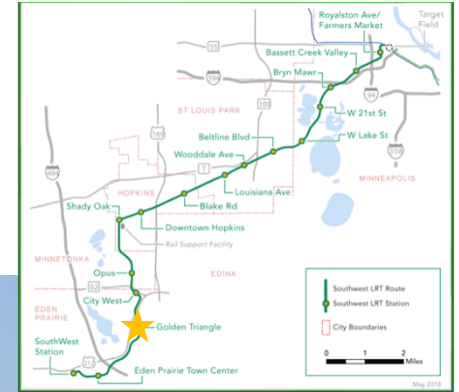
Construction Challenges

- Both of these elements are major projects by themselves; when taken together, they have a significant impact to the project's overall schedule due to their scope and complexity
- Next steps:
 - Corridor Protection Wall
 - Complete change order process
 - Secant Wall
 - Complete change order process
 - Reach agreement on tunnel construction re-sequencing
 - Complete change order process for re-sequencing
 - Update project schedule
 - Reach agreement on schedule
 - Complete change order process

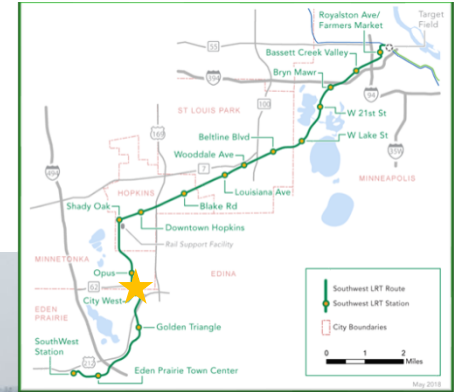
SouthWest Station, Eden Prairie



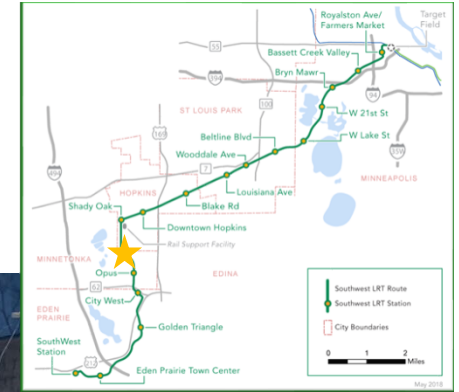
Shady Oak Road/TH 212 LRT Bridge, Eden Prairie



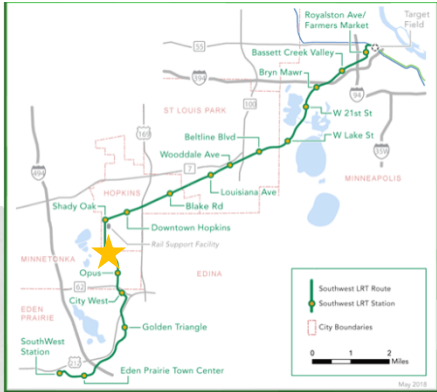
TH 62 LRT Tunnel, Minnetonka



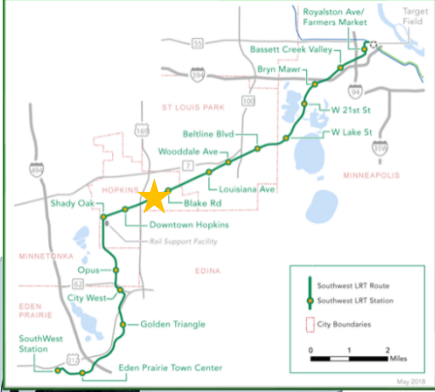
Opus Area Retaining Walls, Minnetonka



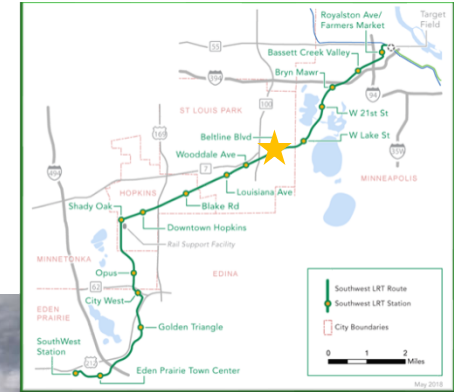
Smetana Roadway Bridge, Minnetonka



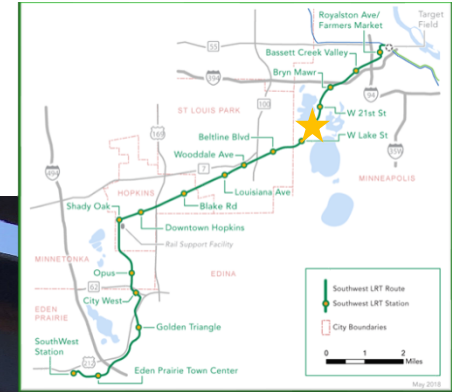
LRT Bridge at Excelsior Boulevard, Hopkins



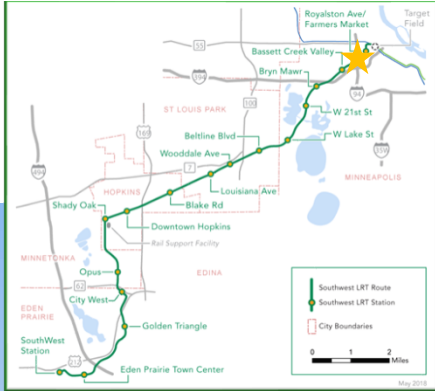
Beltline Blvd Pedestrian Bridge, St. Louis Park



Excavation at Kenilworth LRT Tunnel, Minneapolis



Glenwood Avenue LRT Bridge, Minneapolis



Franklin O&M Facility Modifications



2021 Construction Look Ahead

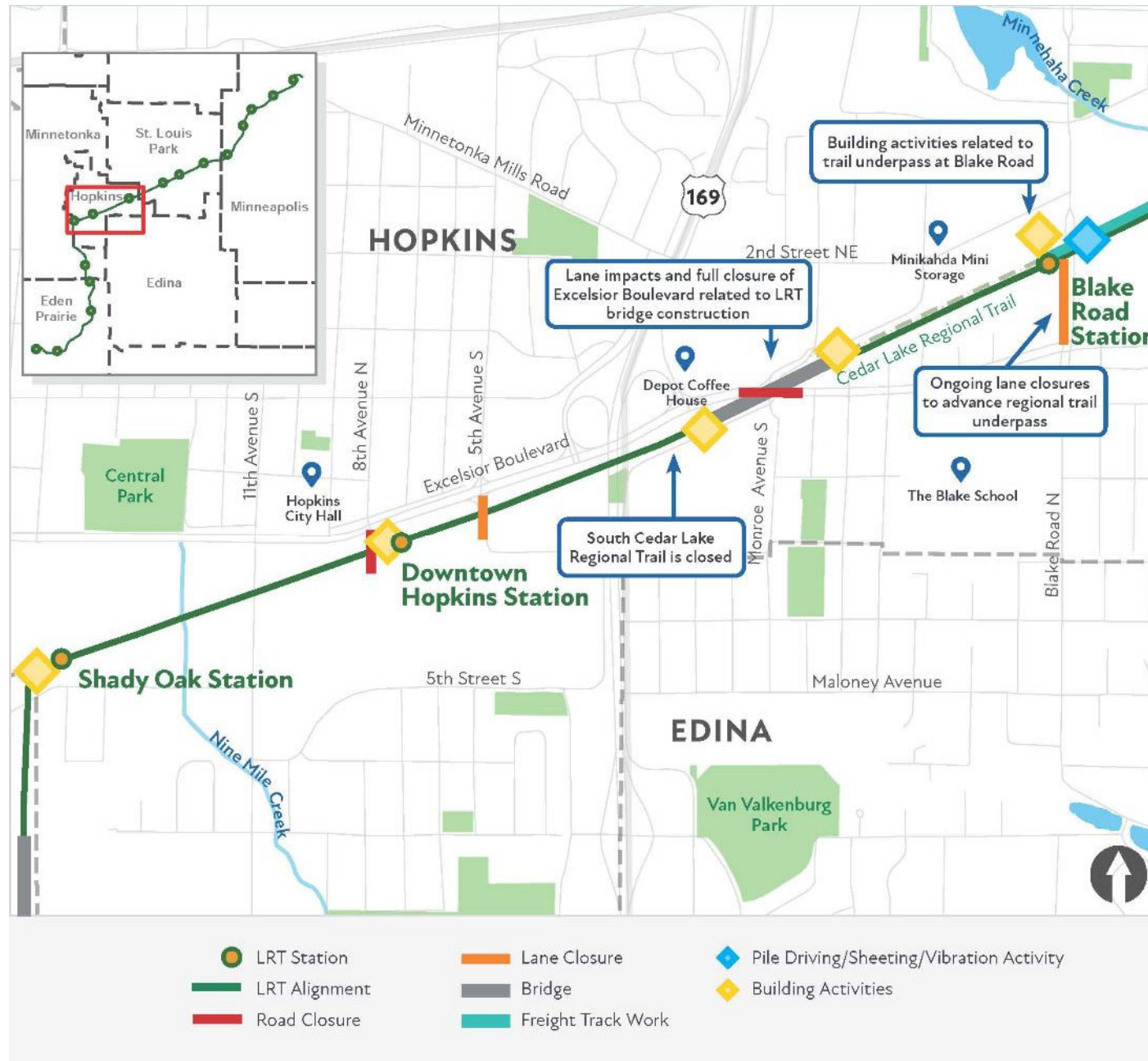
Eden Prairie: 2021 Construction Highlights



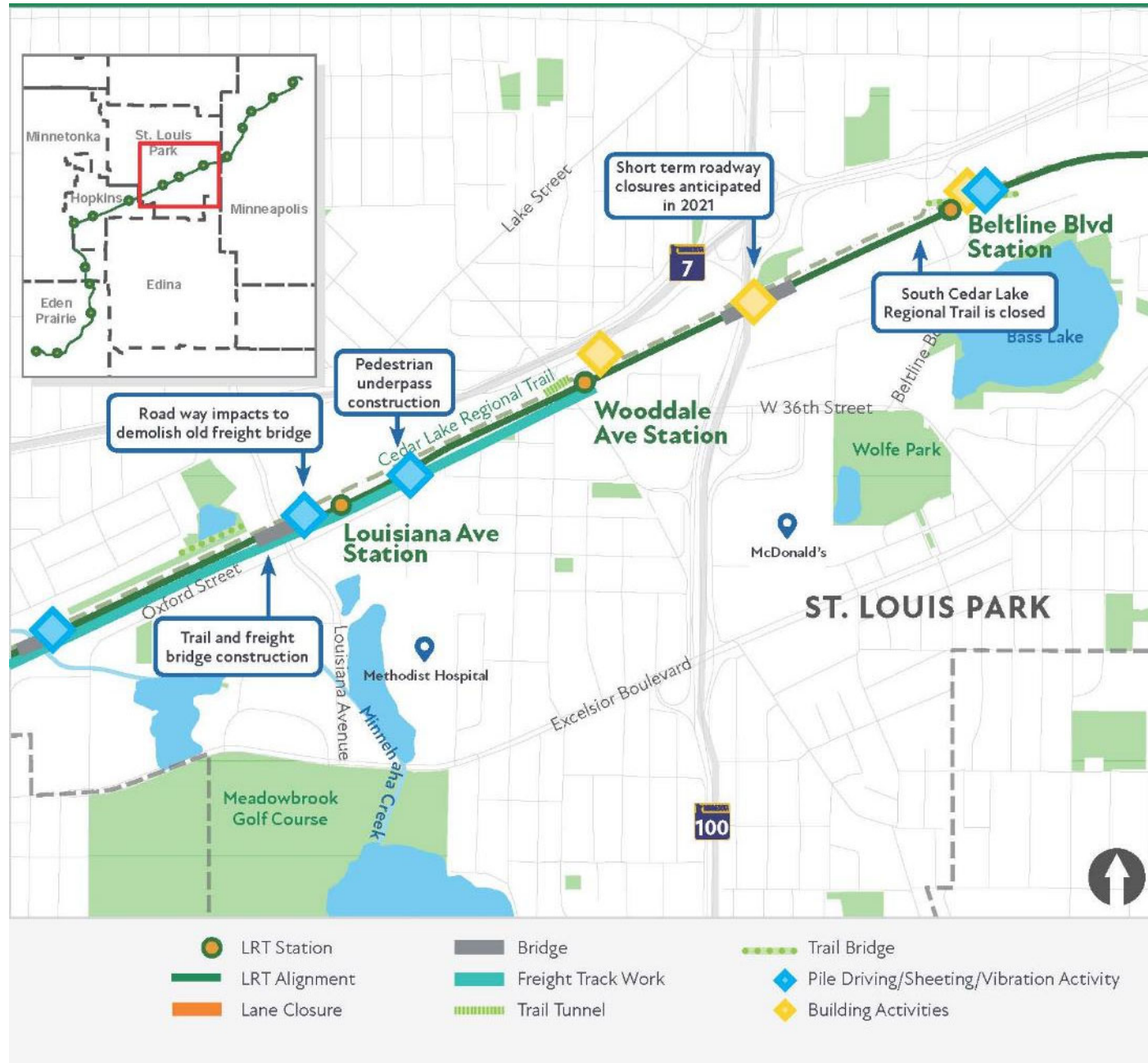
Minnetonka: 2021 Construction Highlights



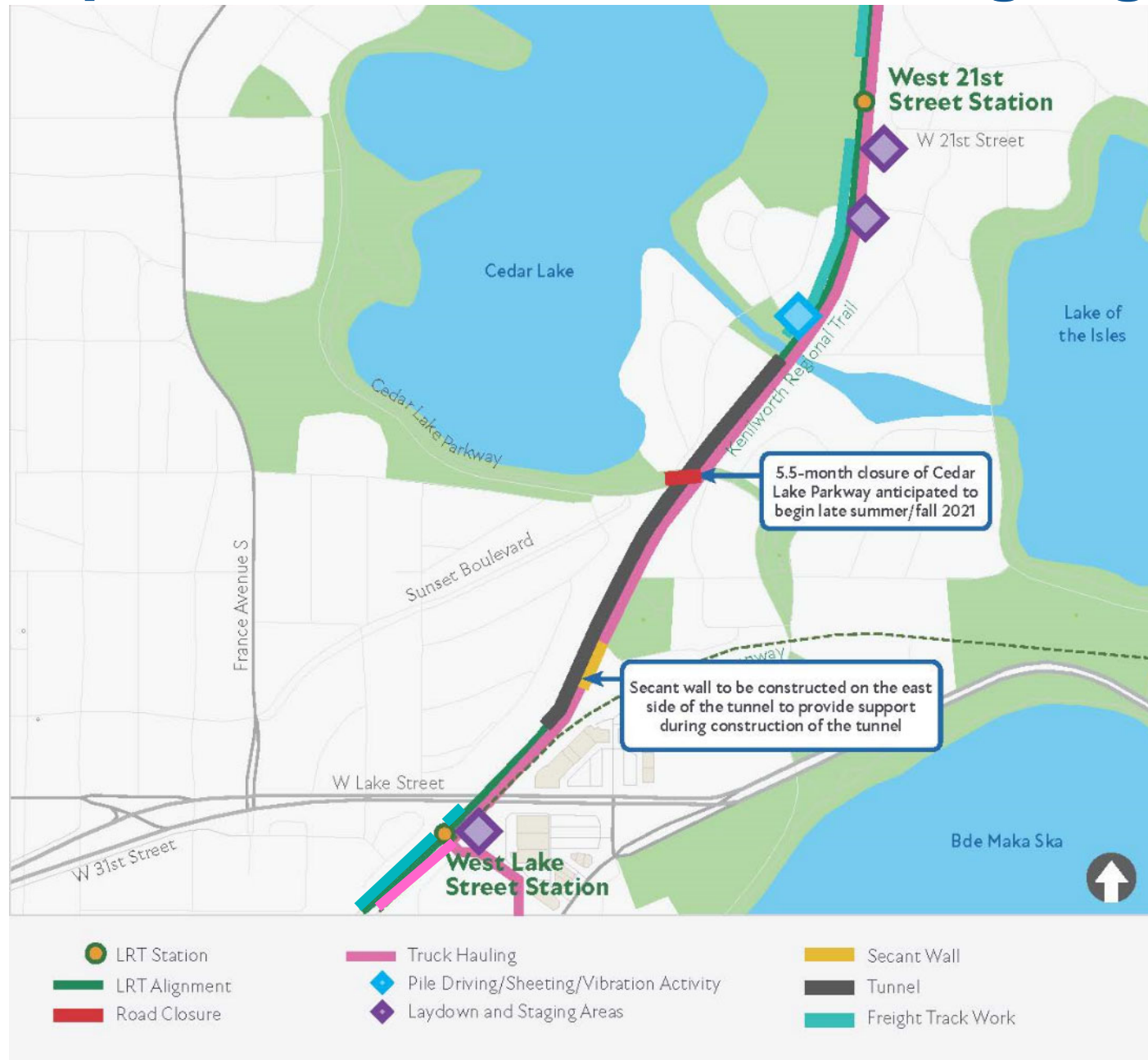
Hopkins: 2021 Construction Highlights



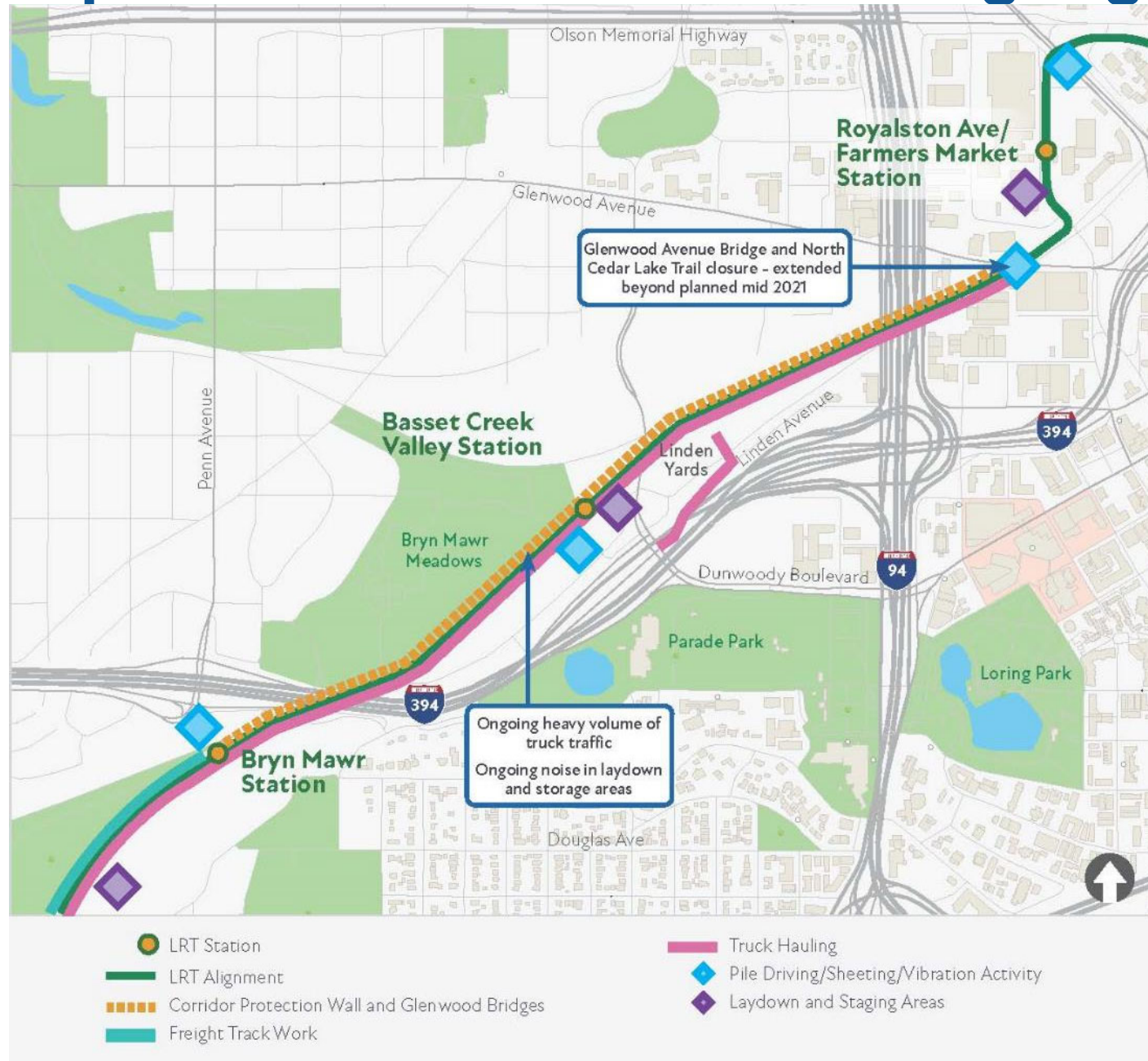
St. Louis Park: 2021 Construction Highlights



Minneapolis: 2021 Construction Highlights



Minneapolis: 2021 Construction Highlights



Light Rail Vehicles

Light Rail Vehicles: 13 Vehicles Delivered



Real Estate Update

Real Estate Acquisition Status

- Total parcels: 192
- Public parcels: 42
 - Acquired Deed / Easement: 42
 - All Public Parcels completed
- Private parcels: 150
 - 79 Parcel acquisitions complete
 - 71 Parcels with Title and Possession, awaiting settlement or Commissioner's Hearing
 - Extending Temporary Easements

Real Estate Relocation Status

- Total displacees: 177
 - 173 displacees - relocation and claims closed out
 - 3 of the closed out displacees have appealed the Council's final determination of claim eligibility, pending review by Administrative Law Judge
 - 4 displacee claims actively being finalized

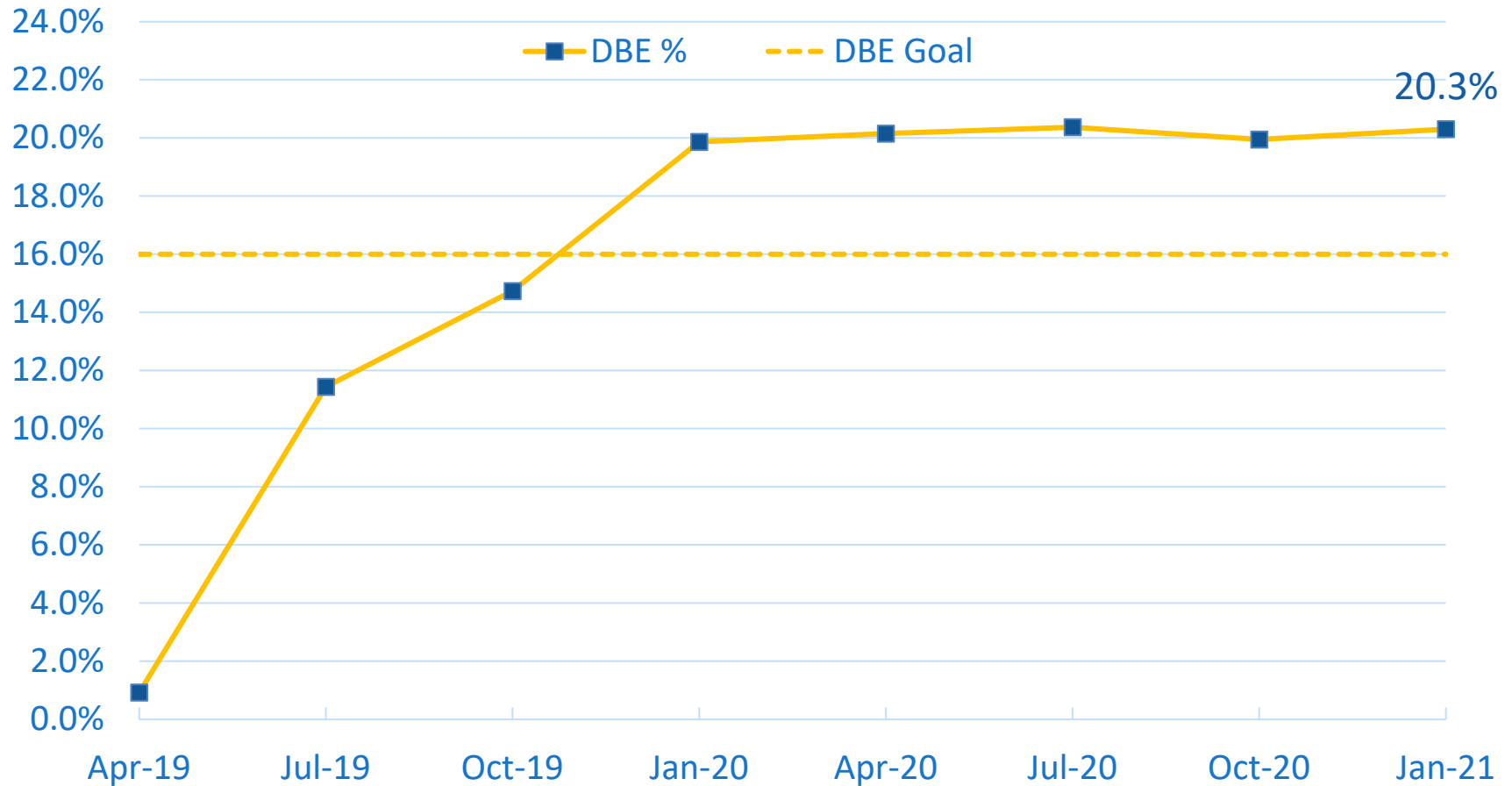
DBE and Workforce Update

Jon Tao
Office of Equal Opportunity

DBE Achievement as of Jan. 31, 2021

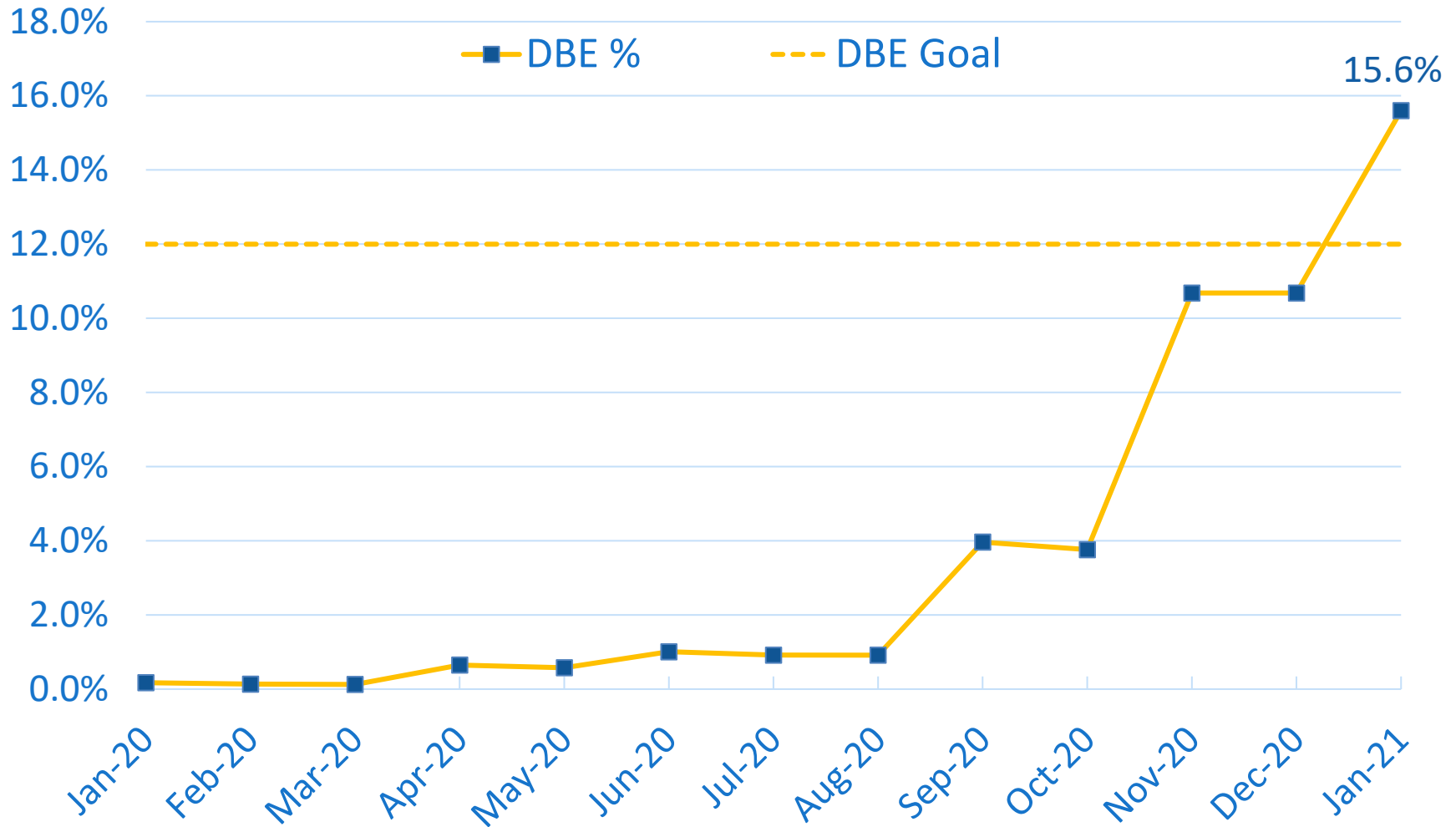
| Contractor | Contract Description | Contract Amount | Contractor Billed to Date | DBE Billed to Date | DBE Date % | As of Date |
|----------------------|----------------------|------------------------|---------------------------|-----------------------|----------------------|------------|
| LMJV 16% Goal | Civil | \$840,066,156 | \$418,314,385 | \$84,895,072 | 20.3% | 1/31/21 |
| APJV 12% Goal | Systems | \$193,819,580 | \$47,782,995 | \$7,455,628 | 15.6% | 1/31/21 |
| LS Black 15% Goal | Franklin O&M Exp. | \$38,704,353 | \$14,880,678 | \$2,626,223 | 17.6% | 1/31/21 |
| 17% Goal | Closed Contracts | \$404,992 | \$404,992 | \$74,610 | 18.4% | |
| | | Contract Amount | Billed to Date | \$ DBE to Date | % DBE to Date | |
| 15% Goal | | \$1,072,995,081 | \$481,383,050 | \$95,051,533 | 19.7% | |

Civil DBE Participation as of Jan. 31, 2021



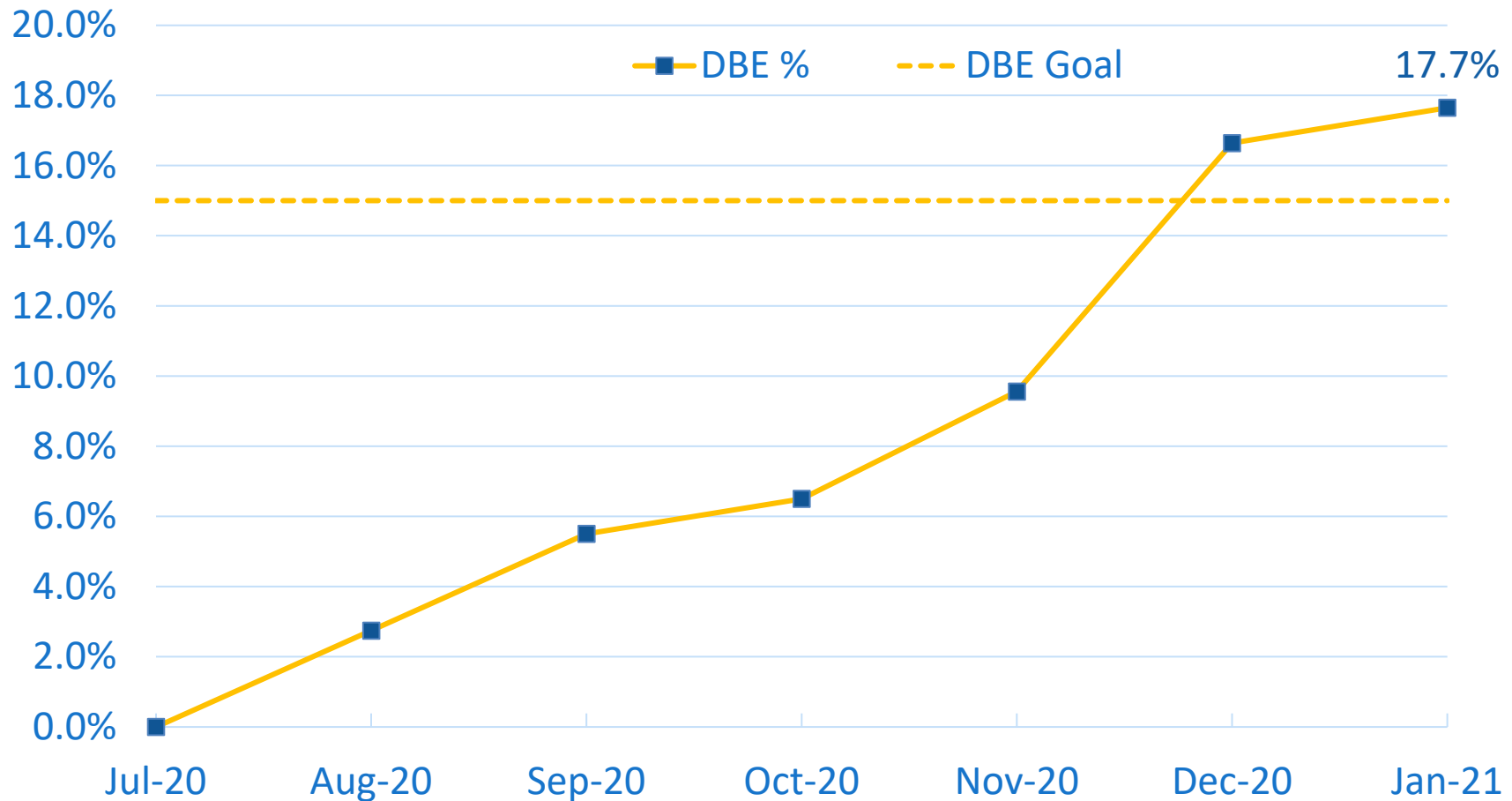
*DBE Goal for the Civil Contract is 16%

Systems DBE Participation as of Jan. 31, 2021



*DBE Goal for the Systems Contract is 12%

Franklin DBE Participation as of Jan. 31, 2021



*DBE Goal for the Franklin Contract is 15%

SWLRT Construction DBE Contracts Disaggregated*

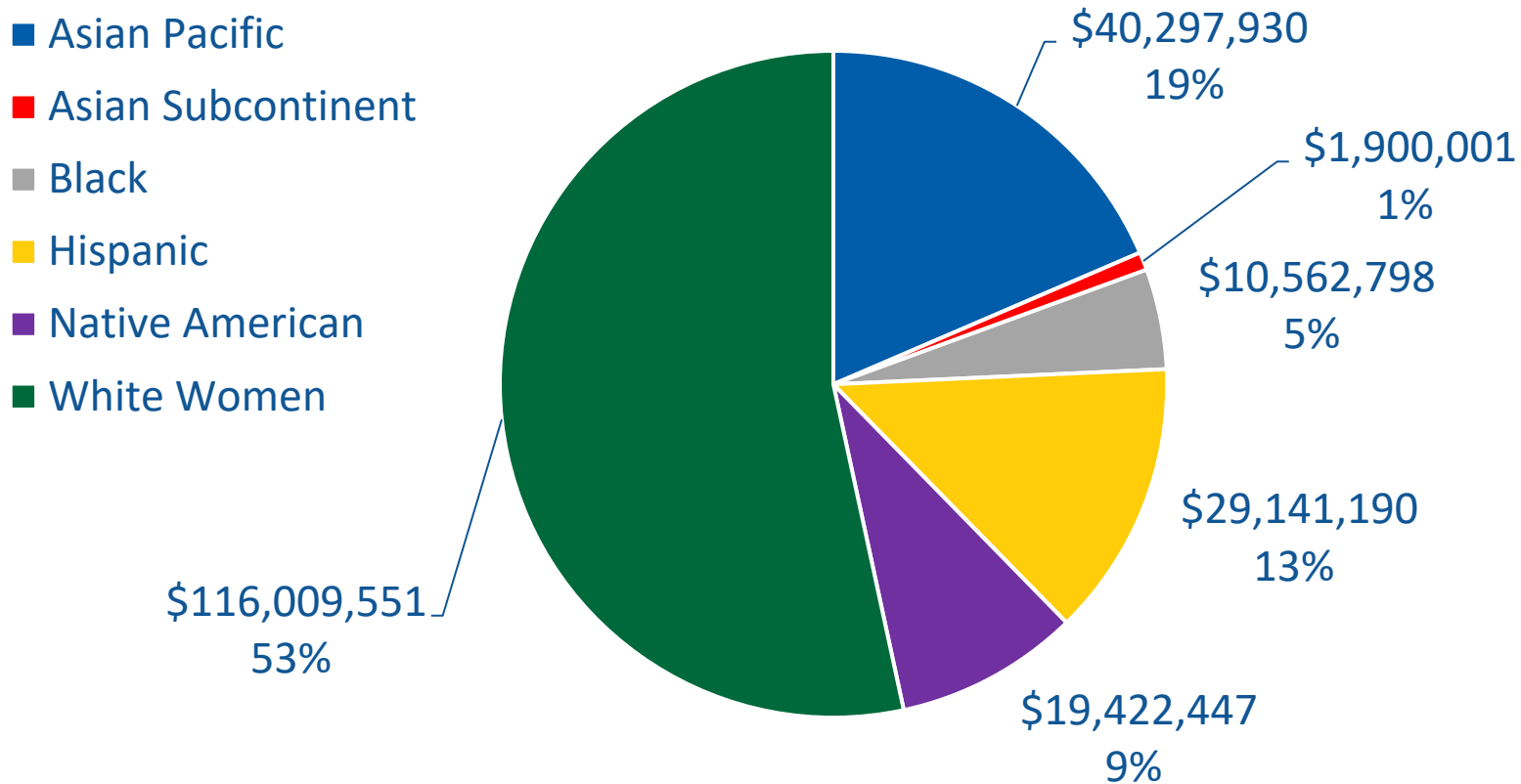
- Total Construction Contracts: \$1,071,995,081

| Ethnic Group | Women | | Men | | Total | |
|--------------------|---------------|------------|--------------|------------|---------------|------------|
| | Value | Percentage | Value | Percentage | Value | Percentage |
| Asian Pacific | \$277,743 | 0.03% | \$40,020,187 | 3.73% | \$40,297,930 | 3.76% |
| Asian Subcontinent | \$0 | 0.00% | \$1,900,001 | 0.18% | \$1,900,001 | 0.18% |
| Black | \$43,369 | 0.00% | \$10,519,430 | 0.98% | \$10,562,798 | 0.98% |
| Hispanic | \$715,140 | 0.07% | \$28,426,050 | 2.65% | \$29,141,190 | 2.72% |
| Native American | \$3,812,256 | 0.36% | \$15,610,191 | 1.45% | \$19,422,447 | 1.81% |
| White Women | \$116,009,551 | 10.81% | | | \$116,009,551 | 10.81% |
| Total | | | | | \$217,333,918 | 20.25% |

*Contract values are as of 1/31/21 and includes: Civil, Systems, Franklin O&M Expansion, & OMF Demo

SWLRT Construction Contracts Disaggregated*

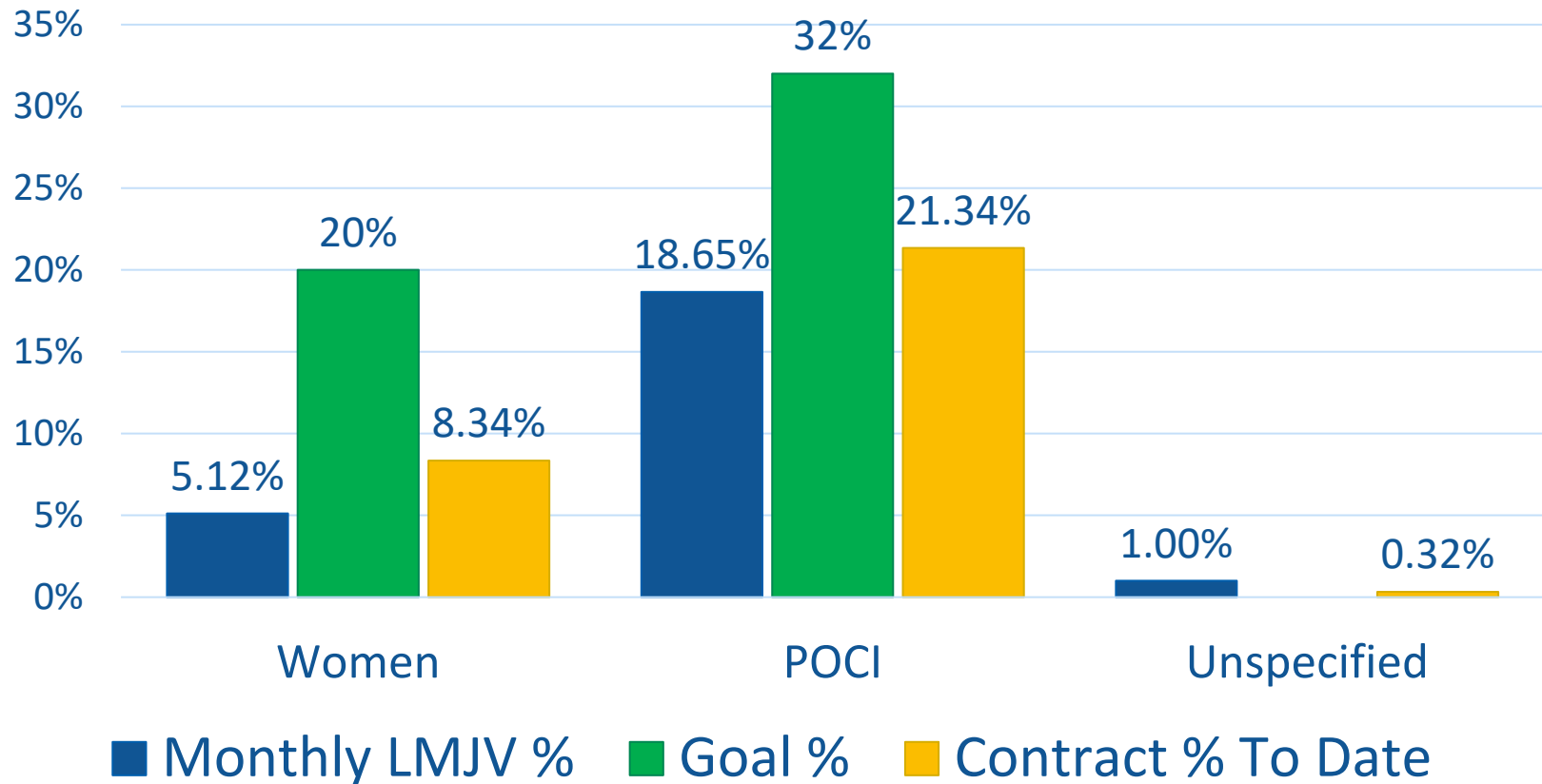
- Construction Contracts Total: \$1,071,995,081
- DBE contracts total: \$217,333,918 (20.25%)



*Contract values are as of 1/31/21 and includes: Civil, Systems, Franklin O&M Expansion, and OMF Demolition.

Civil Workforce Participation*

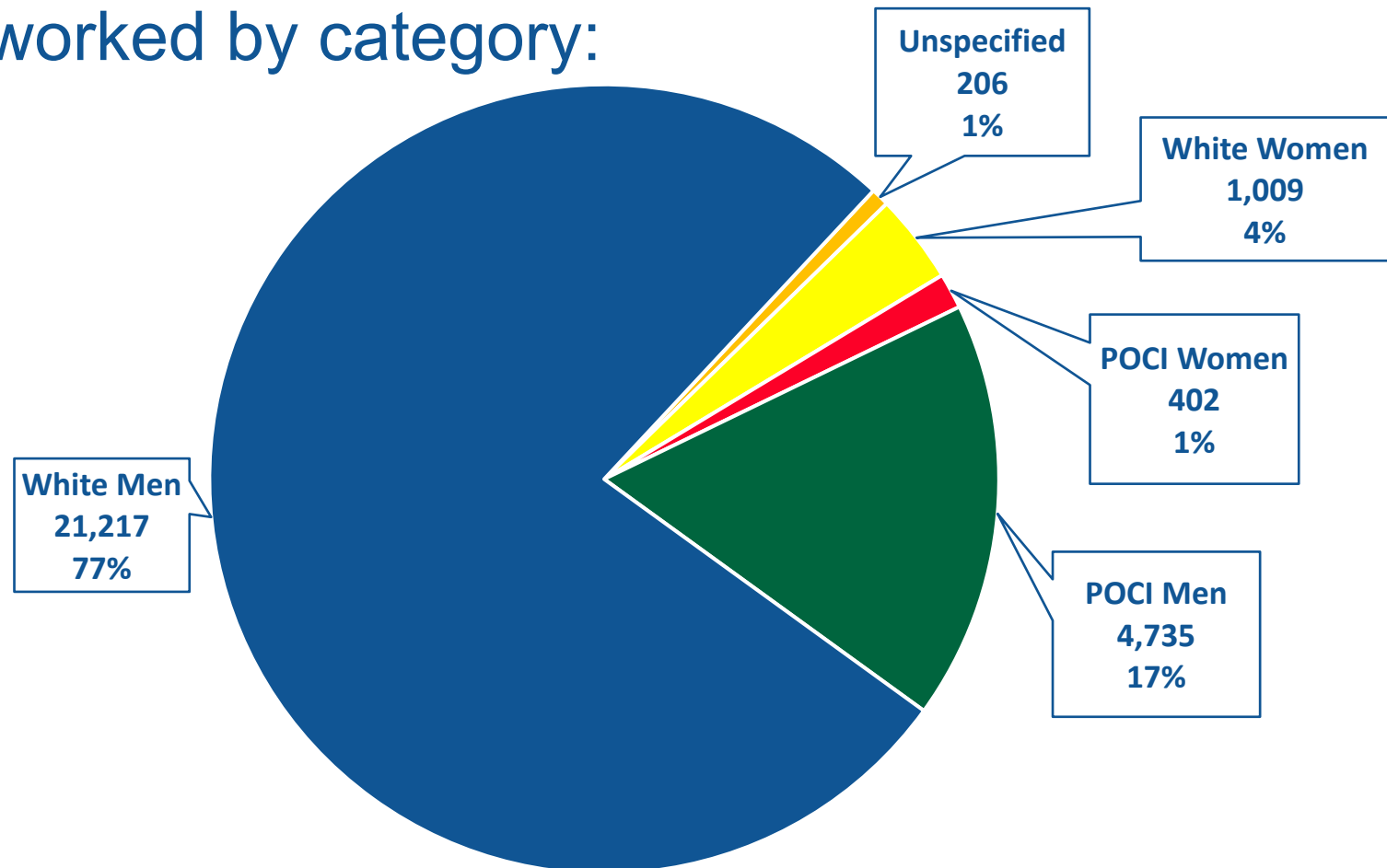
- January 2021: 27,570 hrs
- Civil Construction Total: 1,003,354 hrs



*Based on MDHR Workforce Report for January 2021
People of Color/Indigenous (POCI)

Civil Workforce Participation*

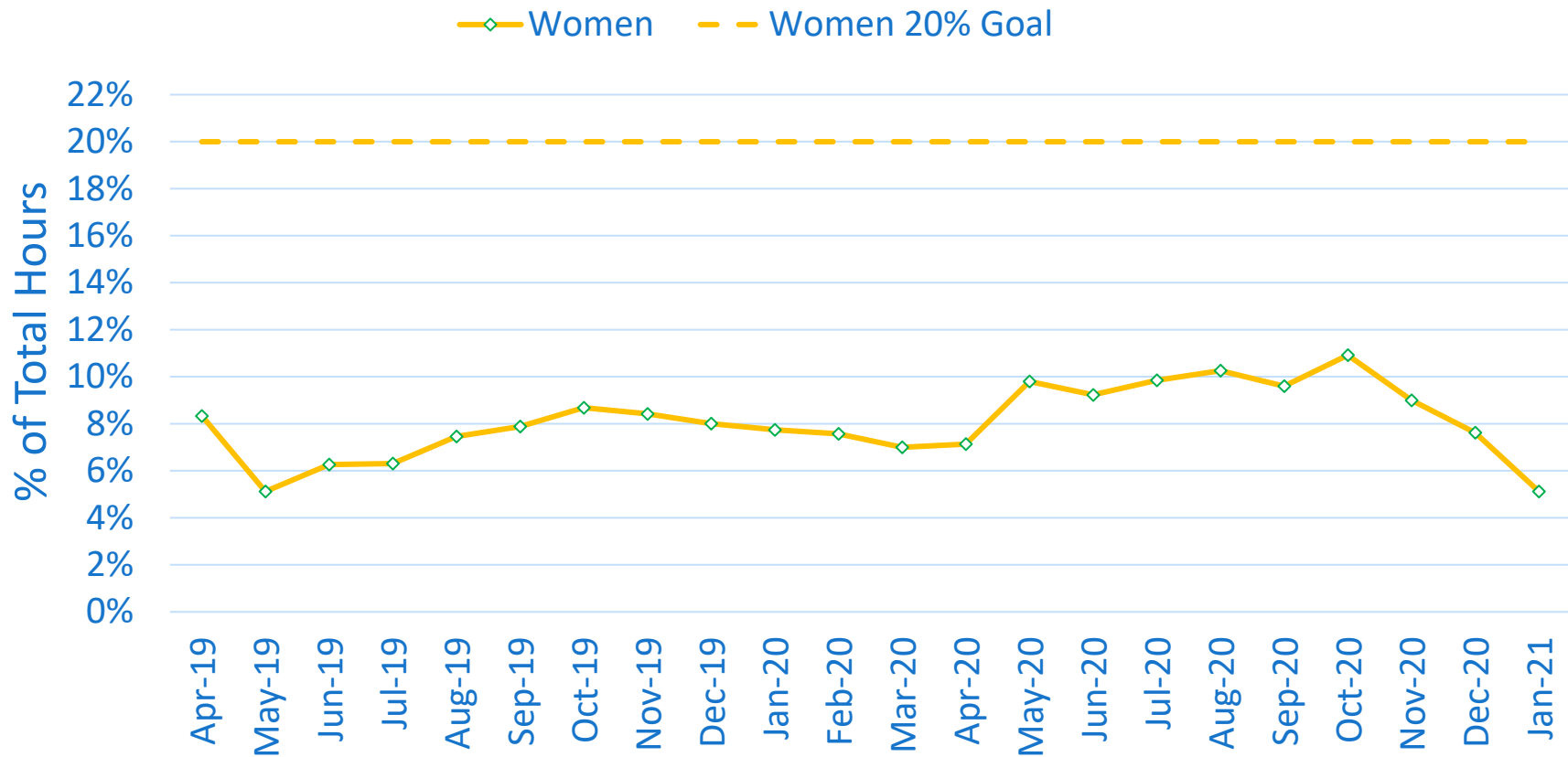
- January 2021: 27,570 hrs
- Hours worked by category:



*Based on MDHR Workforce Report for January 2021

Civil Workforce Participation Cumulative*

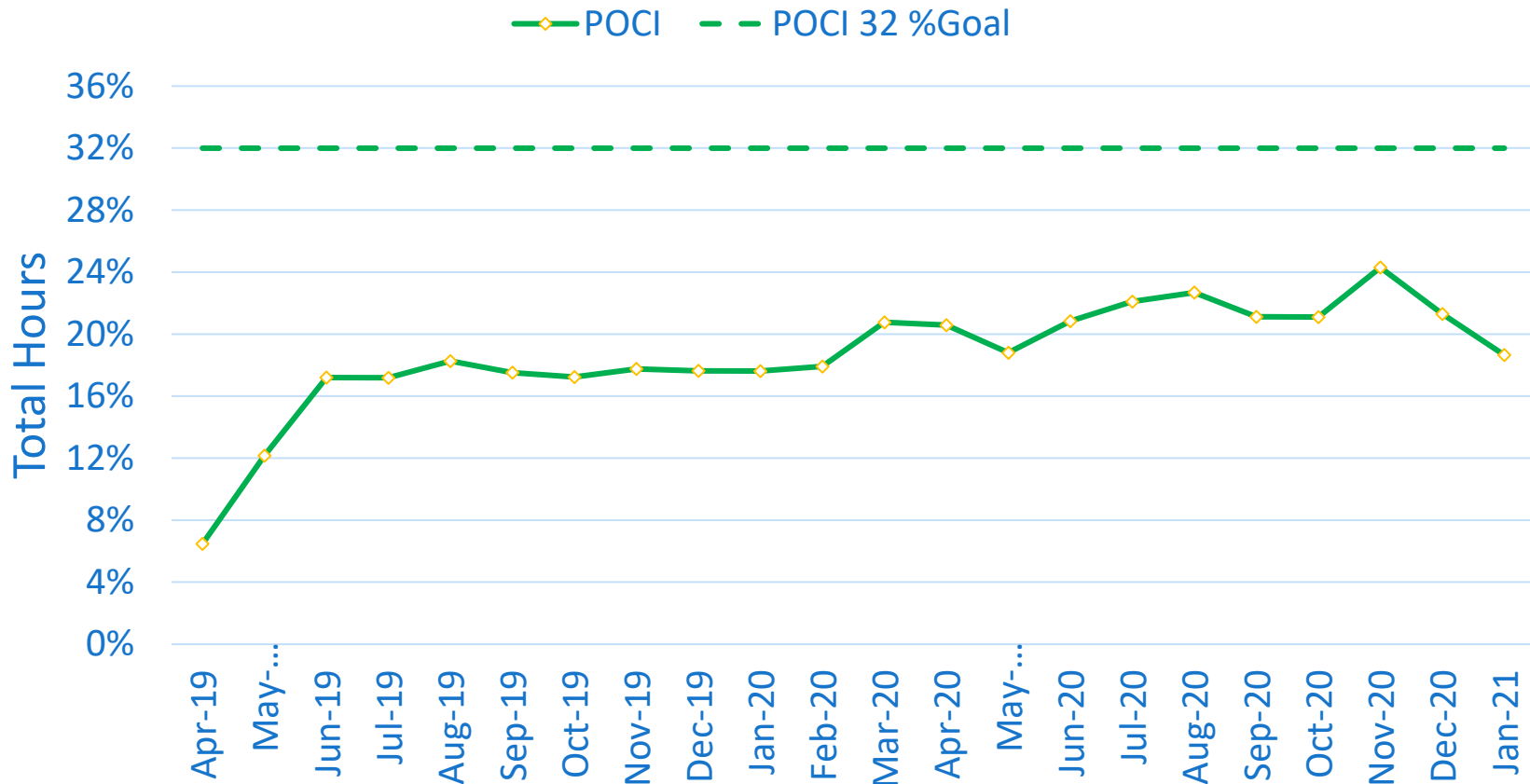
- Total Women hours to date: 83,705 hrs
- Cumulative participation: 8.34%



*Based on MDHR Workforce Reports through January 2021

Civil Workforce Participation Cumulative*

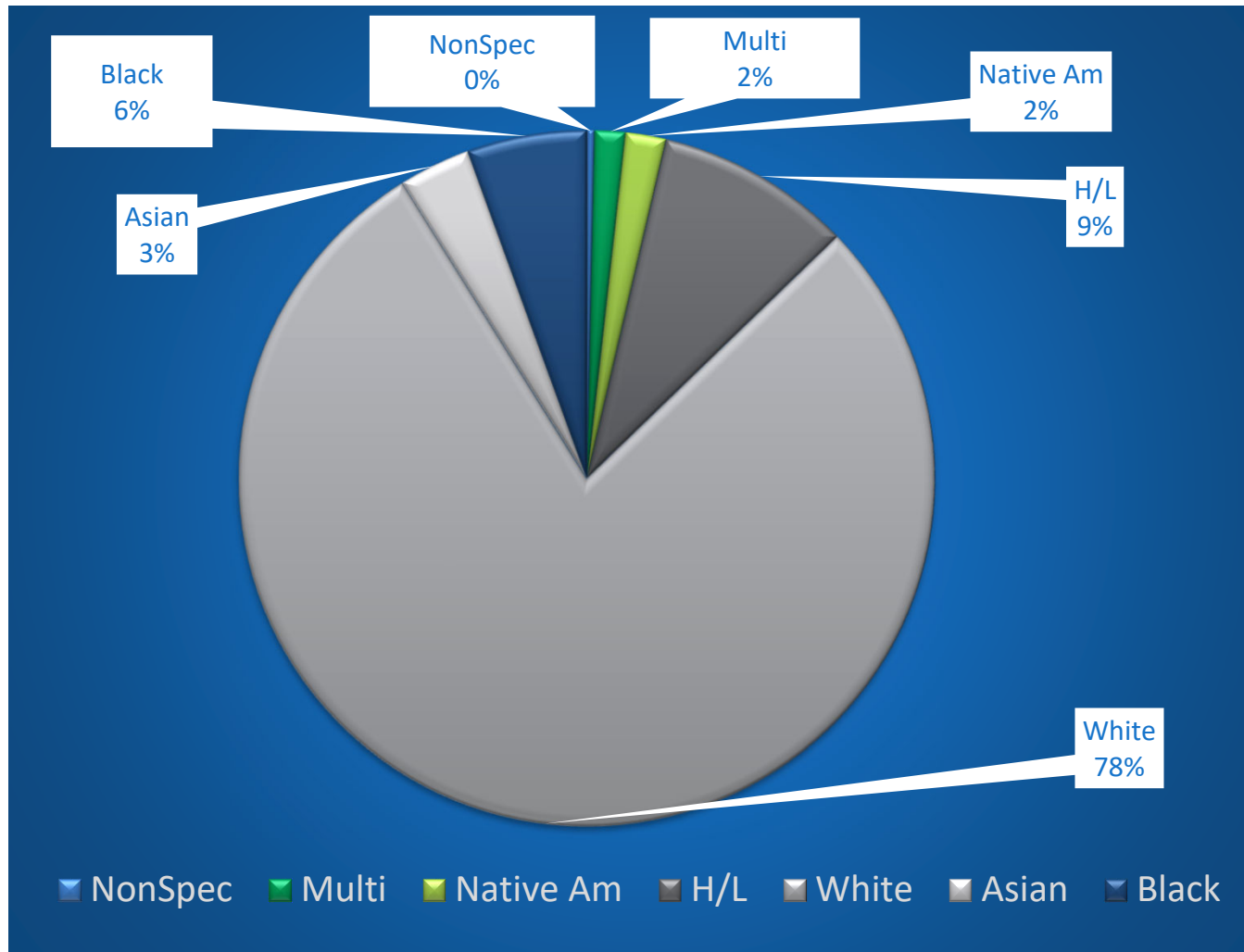
- Total POCI hours to date: 214,128 hrs
- Cumulative participation: 21.34%



*Based on MDHR Workforce Reports through January 2021

Civil Workforce Participation Disaggregated*

PROJECT TO DATE



*Based on MDHR Workforce Reports through January 2021

Civil Workforce Participation Disaggregated*

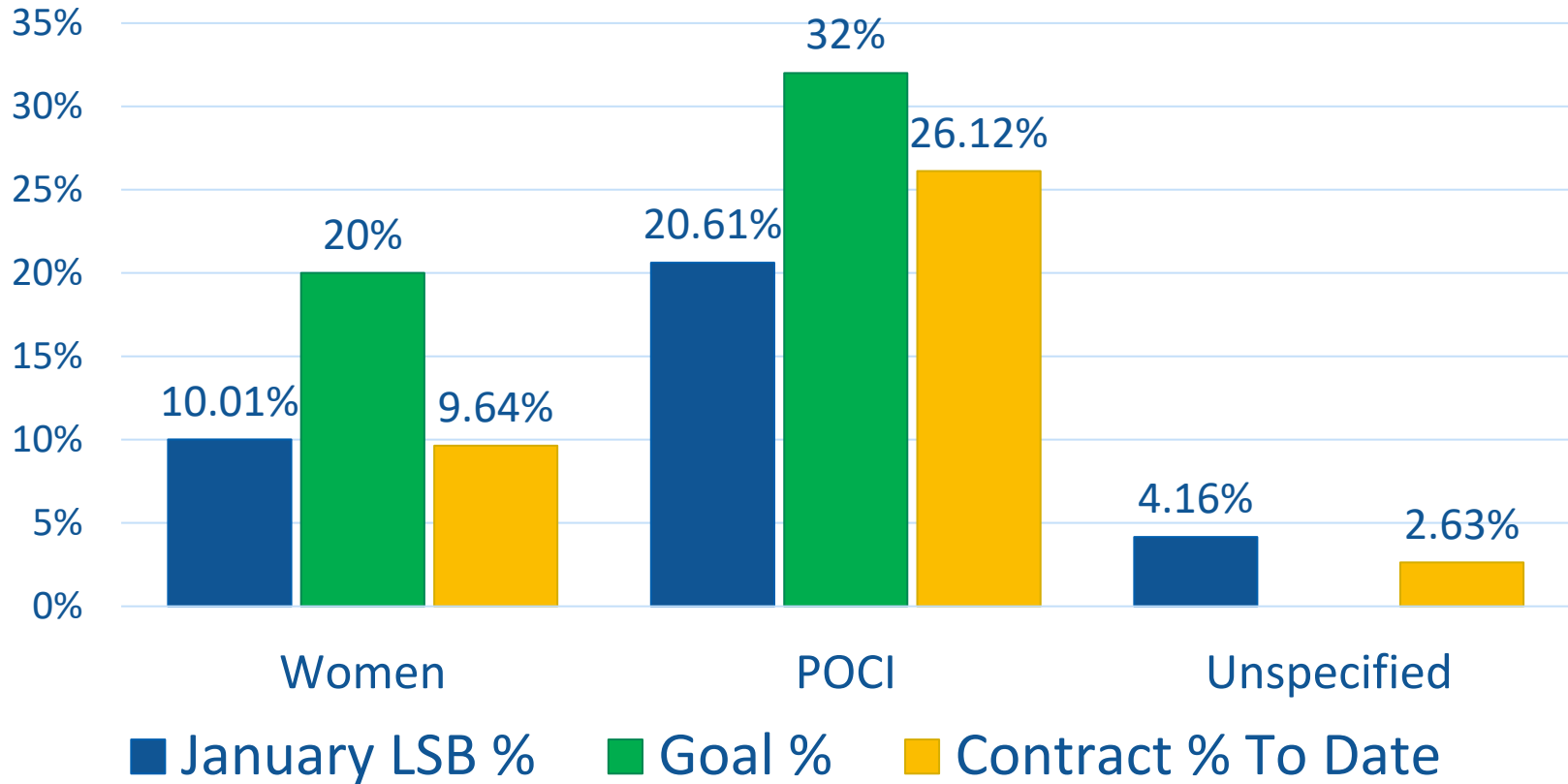
- Project Total: 1,003,354 hrs
- Total POCI: 214,108 hrs (21.34%)
- Total Women: 83,705 hrs (8.34%)

| Ethnic/Racial Group | Total Hours Women | Women Percent | Total Hours Men | Men Percent | Total Hours | Total Percent |
|---------------------|-------------------|---------------|-----------------|-------------|-------------|---------------|
| Asian Americans | 91 | 0.01% | 33,344 | 3.32% | 33,435 | 3.33% |
| Black Americans | 11,400 | 1.14% | 44,336 | 4.42% | 55,737 | 5.56% |
| Hispanic Americans | 1,824 | 0.18% | 89,629 | 8.93% | 91,453 | 9.11% |
| Native Americans | 7,910 | 0.79% | 11,191 | 1.12% | 19,101 | 1.9% |
| Multi-Racial | 700 | 0.07% | 13,683 | 1.36% | 14,383 | 1.43% |
| White Americans | 61,637 | 6.14% | 724,222 | 72.18% | 785,859 | 78.32% |
| Not Specified | 144 | 0.01% | 3,224 | 0.32% | 3,367 | 0.34% |

*People of Color and Indigenous People (POCI) & Women participation from 12/1/18 - 1/31/2021

Franklin O&M Workforce Participation Percentage*

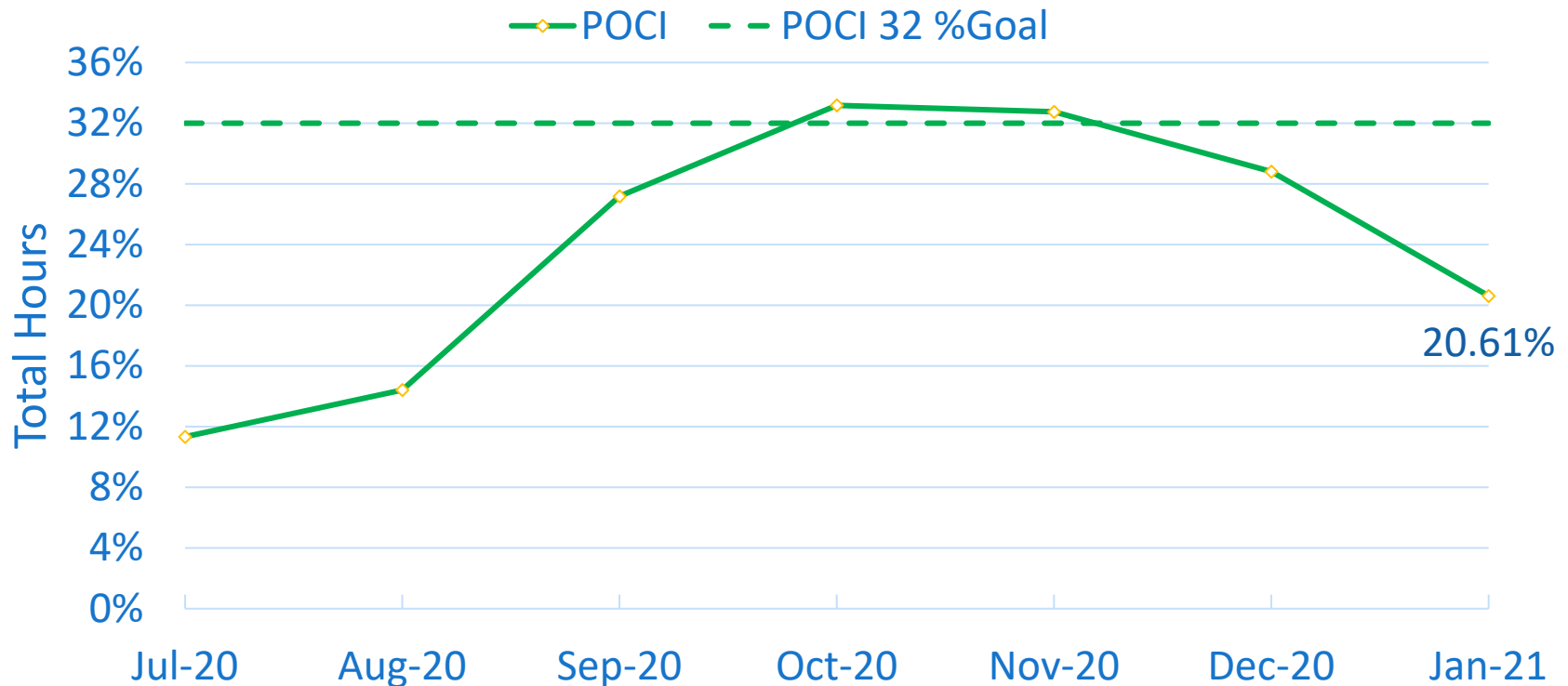
- January 2021: 8,194 hrs
- Franklin O&M Construction Total: 31,921 hrs



*Based on MDHR Workforce Report for January 2021
People of Color/Indigenous (POCI)

Franklin O&M Workforce Participation *

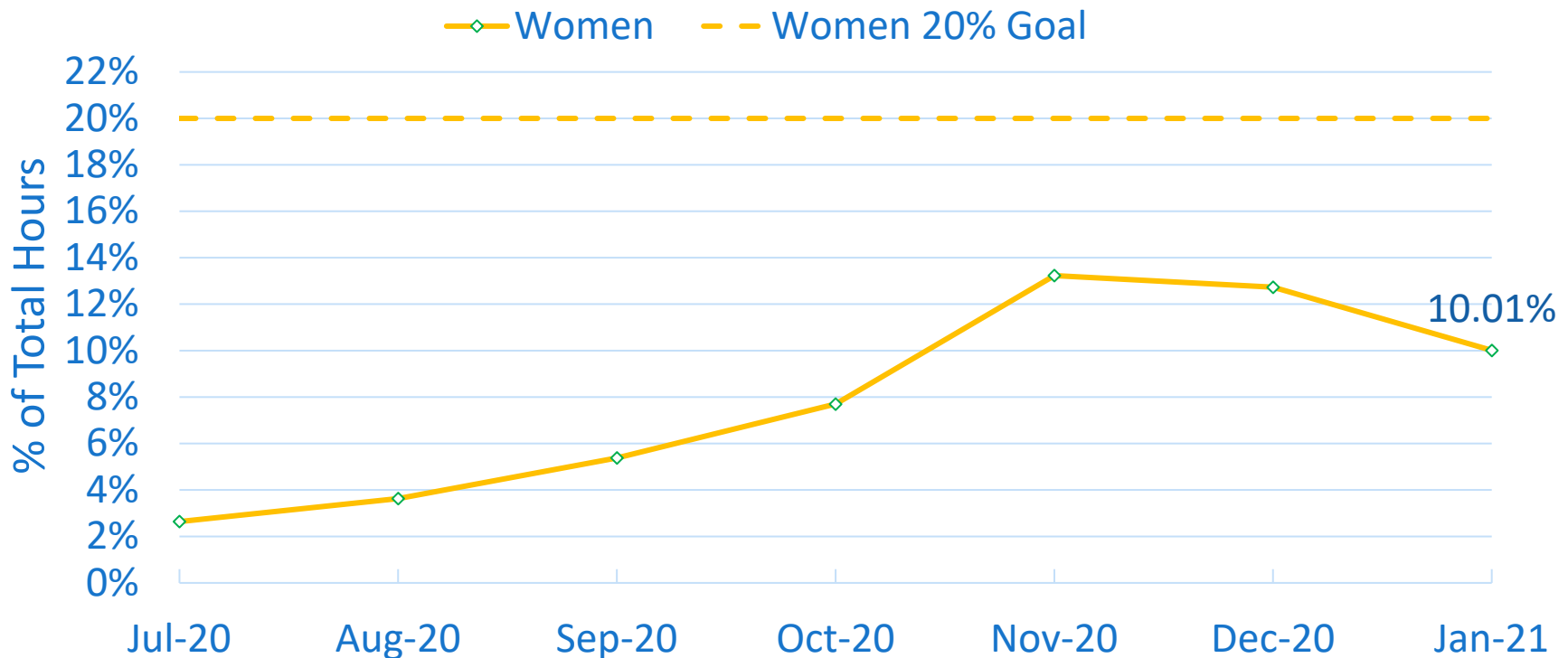
- Total POCI hours to date: 8,338 hrs
- Cumulative Participation: 20.61%



*Based on MDHR Workforce Reports through January 2021.
Data points are based on monthly participation percentage.

Franklin O&M Workforce Participation*

- Total Women hours to date: 3,076 hrs
- Cumulative participation: 9.64%



*Based on MDHR Workforce Reports through January 2021.
Data points are based on monthly participation percentage.

Franklin O&M Workforce Disaggregated*

- Project Total: 31,921 hrs
- Total POCI: 8338 hrs (26.12%)
- Total Women: 3076 hrs (9.64%)

| Ethnic/Racial Group | Total Hours Women | Women Percent | Total Hours Men | Men Percent | Total Hours | Total Percent |
|---------------------|-------------------|---------------|-----------------|-------------|-------------|---------------|
| Asian Americans | 0 | 0.00% | 1,246 | 3.9% | 1,246 | 3.90% |
| Black Americans | 1,299 | 4.07% | 717 | 2.25% | 2,016 | 6.32% |
| Hispanic Americans | 151 | 0.47% | 2,821 | 8.84% | 2972 | 9.31% |
| Native Americans | 0 | 0.00% | 910 | 2.85% | 910 | 2.85 |
| Multi-Racial | 0 | 0.00% | 1,195 | 3.74% | 1,195 | 3.74% |
| White Americans | 1553 | 4.87% | 21,191 | 66.39% | 22,744 | 71.25% |
| Not Specified | 73 | 0.23% | 766 | 2.40% | 839 | 2.63% |

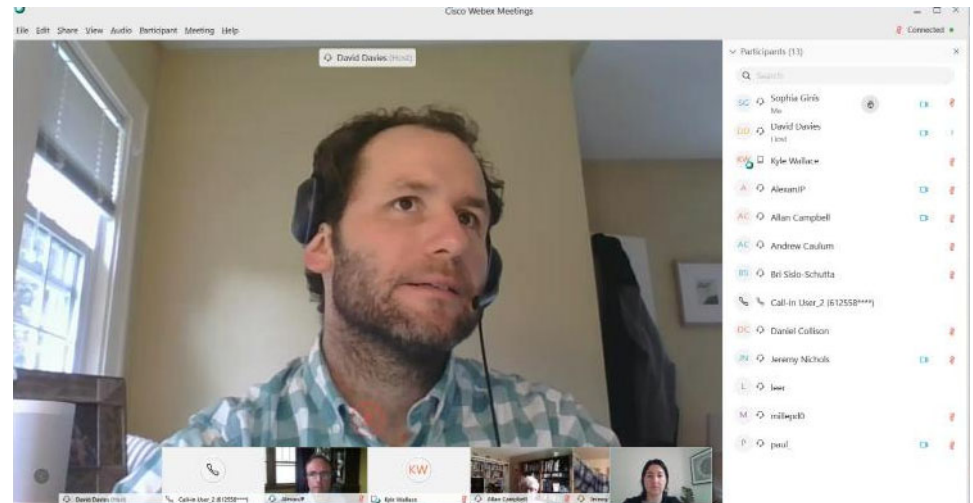
*People of Color and Indigenous People (POCI) & Women participation from 6/1/20 - 1/31/2021

Communications & Outreach Update

Sam O'Connell
Sr. Manager, Community Affairs

2020 Construction Communications

- Construction updates: 16,600+ subscribers; 46% open rate
- 24-hour construction hotline: 270 calls in 2020
 - 612-373-3933
- Hundreds more non-hotline calls and emails from community members to outreach staff

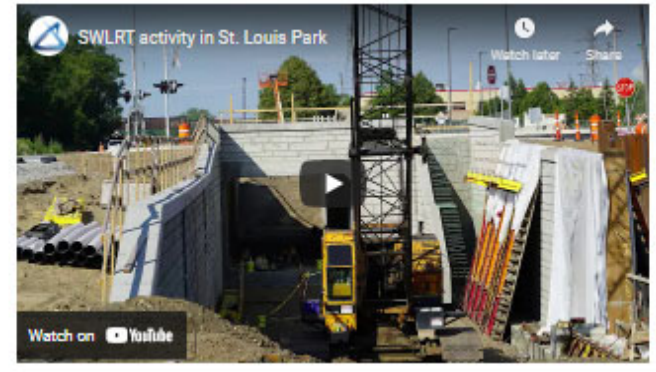
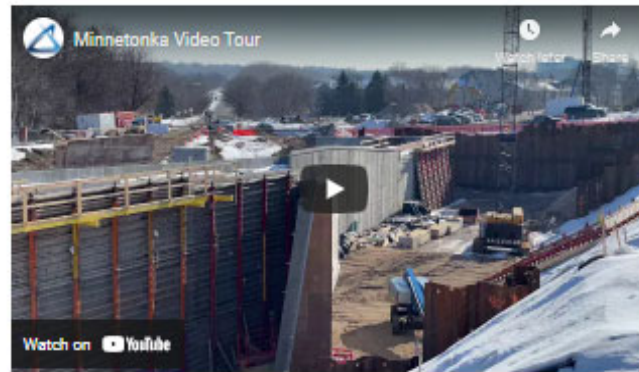


Construction Communications

- Construction Information Workgroups:
 - Eden Prairie: 8 meetings
 - Minnetonka: 7 meetings
 - Hopkins: 4 meetings
 - St. Louis Park: 6 meetings
 - Minneapolis: 9 meetings
- 2021 Highlights:
 - February/March: Virtual community townhalls highlighting 2021 construction activities
 - Expanded use of social media to highlight construction progress
 - Return to in-person events when it is safe to do so

2021 Community Construction Videos

- Eden Prairie
- Minnetonka
- Hopkins
- St. Louis Park



Stay Updated!

Online:

SWLRT.org

Twitter:

@SouthwestLRT

Flickr:

[flickr.com/photos/metcouncil/albums](https://www.flickr.com/photos/metcouncil/albums)

Facebook:

@MetropolitanCouncil

Instagram:

@southwest_lrt

