



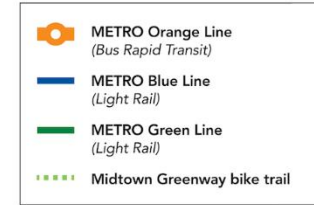
Orange Line Update and Service Launch

Metropolitan Council Committee of the Whole

December 1, 2021

Project Overview

- 17-mile Bus Rapid Transit Line from Downtown Minneapolis to Burnsville
- Builds on decades of highway and transit investment along I-35W/I-35
- All-day, bi-directional service to destinations along the corridor
- Opening for service on December 4, 2021
- \$150.7 million project budget
 - 60% FTA Small Starts/federal funds
 - Additional \$11.36M federal ARPA appropriation summer 2021, reduces local funding shares
 - 30% Counties funding
 - 10% State funding



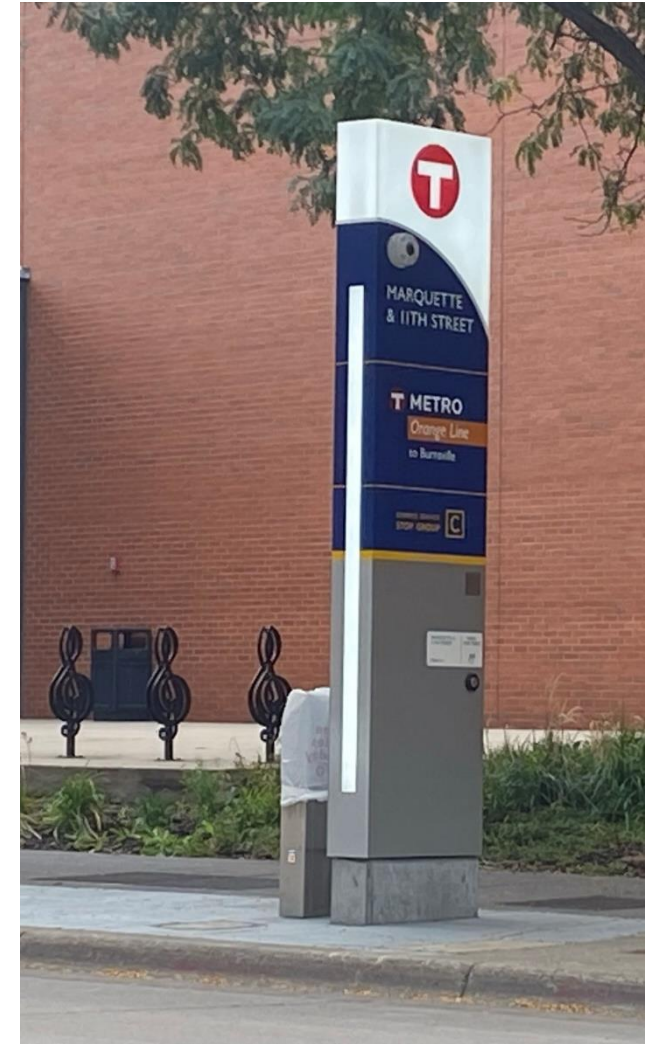
Virtual Tour- Downtown Minneapolis



3rd Street Station- Downtown Minneapolis



In-Progress Station Modifications



11th Street Station

Downtown Minneapolis



11th Street Station- Downtown Minneapolis



12th Street Bus-Only Ramp into Downtown Minneapolis

I-35W & Lake St Station- Before



Previous Bus Stop Staircase

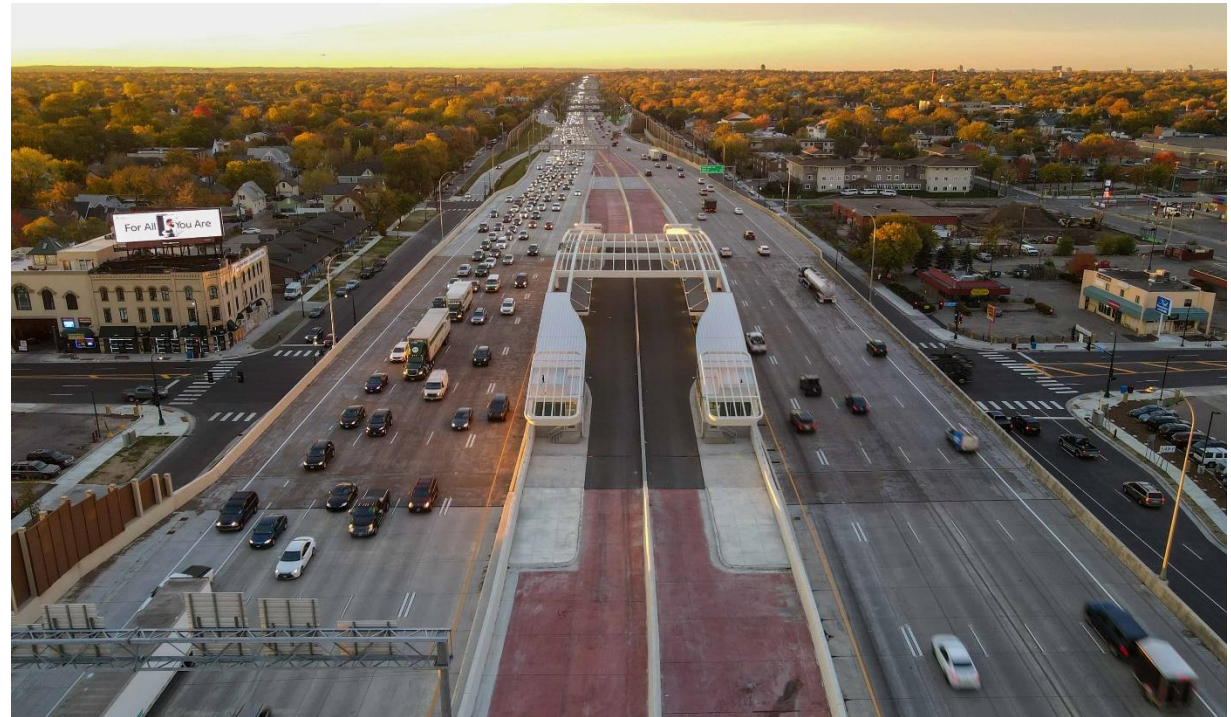


Previous Bus Stop on Freeway Shoulder

I-35W & Lake St Station- After



Transit Station and Bridge Exterior



Station Aerial View

I-35W & Lake St Station- Lake Street Level



Station Interior

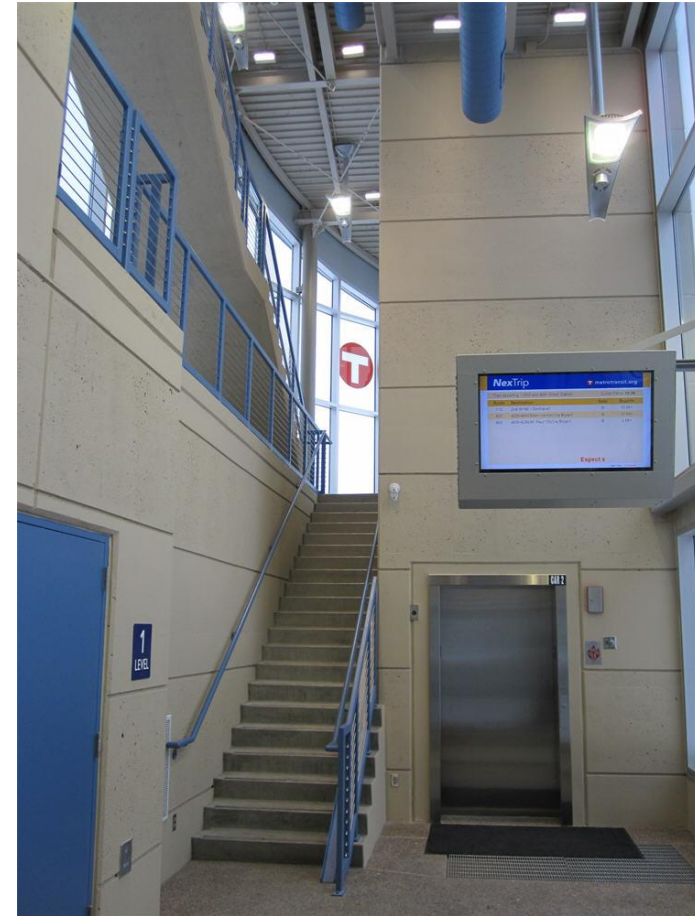


Station Plaza

I-35W & 46th St Station



I-35W & 46th Street Station



Station Interior

I-35W & 66th St Station



Northbound 66th Street Station



Southbound 66th Street Station

Knox Ave & 76th St Station



Northbound Station



Southbound Station

Knox Ave Tunnel



May 2020 Construction



July 2021 Construction

Tunnel Construction



Structure Construction May 2021



Guideway Construction Late 2021

Tunnel Completion- Late November

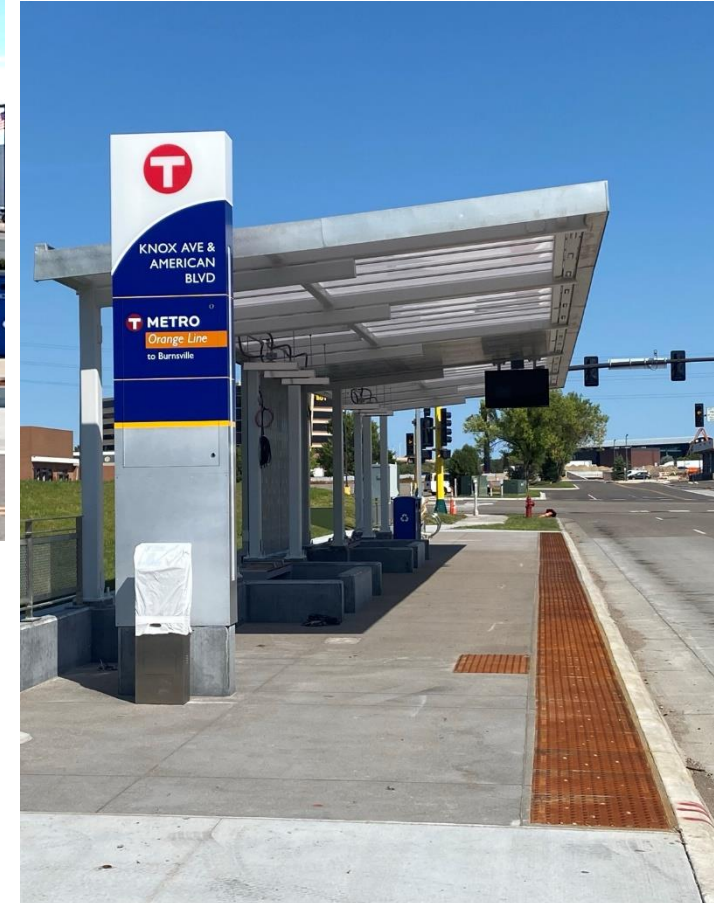


Tunnel Interior



Northbound Tunnel Portal

Knox Ave & American Blvd Station



Top: Northbound Knox Ave & American Blvd Station

Left: Southbound Station

Right: Southbound Station

I-35W & 98th Street Station



Southbound Station



Station Plaza

Burnsville Heart of the City Station



Burnsville Parkway Station



Burnsville Parkway Station

Service Span and Frequency

- Frequent all-day bi-directional service
- Weekdays- Every 15 minutes
- Weekends- Every 30 minutes
- Span of service
 - 5am to midnight weekdays
 - 6am to 11pm Saturday
 - 7am to 11pm Sunday
- Connecting Service including new routes
- Increased Orange Line and Connecting Route frequency planned as operator availability increases

Effective 12/4/21



MAJOR DESTINATIONS:

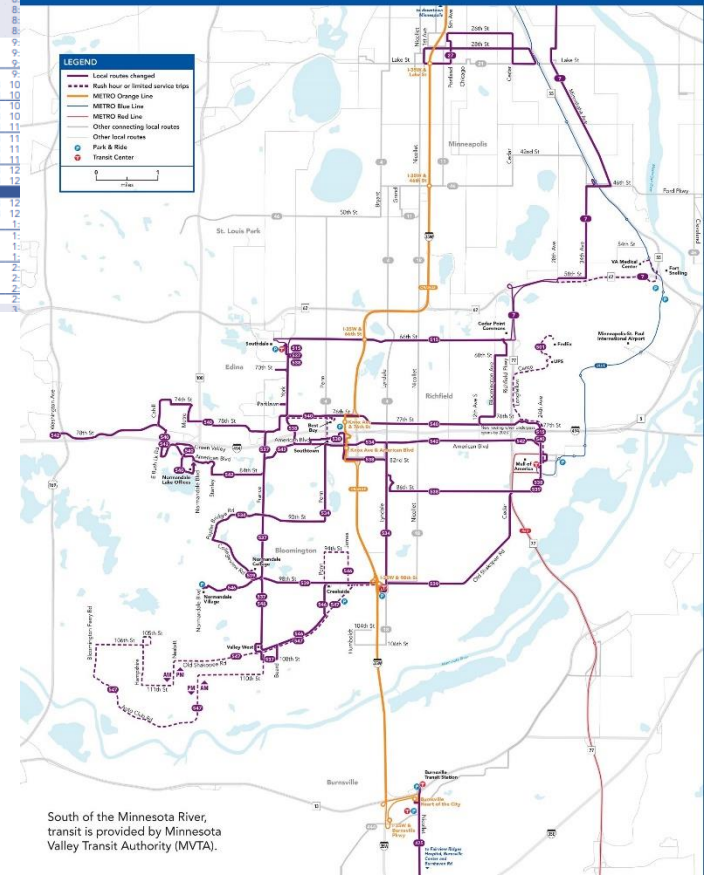
- Downtown Minneapolis**
Marquette Ave
2nd Ave
- South Minneapolis**
I-35W & Lake St Station
I-35W & 46th St Station
- Richfield**
I-35W & 66th St Station
Knox Ave & 76th St Station
- Bloomington**
Knox Ave & American Blvd
Station
I-35W & 98th St Station
- Burnsville**
Burnsville Heart of the City
Station
I-35W & Burnsville Pkwy Station

612-373-3333 • metrotransit.org

Monday — Friday
NORTHBOUND from Burnsville, Bloomington,
and Richfield to downtown Minneapolis via I-35W

route number & letter	Burnsville Heart of the City Station	Bloomington Knox Ave & American Blvd Station	Richfield Knox Ave & 76th St Station	Richfield I-35W & 66th St Station	Bloomington I-35W & 98th St Station	Burnsville I-35W & Burnsville Pkwy Station	Downtown Minneapolis 2nd Ave	Downtown Minneapolis Marquette Ave	route number
	2	3	4	5	6	7	8	9	
AM									
Orange	5:12	5:14	5:19	5:24	5:26	5:29	5:34	5:37	Orange
Orange	5:42	5:44	5:49	5:54	5:56	5:59	6:04	6:07	Orange
Orange	6:12	6:14	6:19	6:24	6:26	6:29	6:34	6:37	Orange
Orange	6:27	6:29	6:34	6:39	6:41	6:44	6:49	6:52	Orange
Orange	6:44	6:46	6:51	6:56	6:58	7:01	7:06	7:09	Orange
Orange	6:58	7:00	7:06	7:11	7:13	7:16	7:21	7:24	Orange
Orange	7:13	7:15	7:21	7:26	7:28	7:31	7:36	7:39	Orange
Orange	7:28	7:30	7:36	7:41	7:43	7:46	7:51	7:54	Orange
Orange	7:43	7:45	7:51	7:56	7:58	8:01	8:06	8:09	Orange
Orange	7:59	8:01	8:06	8:11	8:13	8:16	8:21	8:24	Orange
Orange	8:12	8:14	8:19	8:24	8:26	8:29	8:34	8:37	Orange
Orange	8:26	8:28	8:33	8:38	8:40	8:43	8:48	8:51	Orange
Orange	8:41	8:43	8:48	8:53	8:55	8:58	9:03	9:06	Orange
Orange	8:56	8:58	9:03	9:08	9:10	9:13	9:18	9:21	Orange
Orange	9:11	9:13	9:18	9:23	9:25	9:28	9:33	9:36	Orange
Orange	9:26	9:28	9:33	9:38	9:40	9:43	9:48	9:51	Orange
Orange	9:41	9:43	9:48	9:53	9:55	9:58	10:03	10:06	Orange
Orange	9:56	9:58	10:03	10:08	10:10	10:13	10:18	10:21	Orange
Orange	10:11	10:13	10:18	10:23	10:25	10:28	10:33	10:36	Orange
Orange	10:26	10:28	10:33	10:38	10:40	10:43	10:48	10:51	Orange
Orange	10:41	10:43	10:48	10:53	10:55	10:58	11:03	11:06	Orange
Orange	10:56	10:58	11:03	11:08	11:10	11:13	11:18	11:21	Orange
Orange	11:11	11:13	11:18	11:23	11:25	11:28	11:33	11:36	Orange
Orange	11:26	11:28	11:33	11:38	11:40	11:43	11:48	11:51	Orange
Orange	11:41	11:43	11:48	11:53	11:55	11:58	12:03	12:06	Orange
Orange	11:56	11:58	12:03	12:08	12:10	12:13	12:18	12:21	Orange
PM									
Orange	12:11	12:13	12:18	12:23	12:25	12:28	12:33	12:36	Orange
Orange	12:26	12:28	12:33	12:38	12:40	12:43	12:48	12:51	Orange
Orange	12:41	12:43	12:48	12:53	12:55	12:58	1:03	1:06	Orange
Orange	12:56	12:58	1:03	1:08	1:10	1:13	1:18	1:21	Orange
Orange	1:11	1:13	1:18	1:23	1:25	1:28	1:33	1:36	Orange
Orange	1:26	1:28	1:33	1:38	1:40	1:43	1:48	1:51	Orange
Orange	1:41	1:43	1:48	1:53	1:55	1:58	2:03	2:06	Orange
Orange	1:56	1:58	2:03	2:08	2:10	2:13	2:18	2:21	Orange
Orange	2:11	2:13	2:18	2:23	2:25	2:28	2:33	2:36	Orange
Orange	2:26	2:28	2:33	2:38	2:40	2:43	2:48	2:51	Orange
Orange	2:41	2:43	2:48	2:53	2:55	2:58	3:03	3:06	Orange

METRO Orange Line Connecting Bus Service



South of the Minnesota River, transit is provided by Minnesota Valley Transit Authority (MVTA).

Plan a trip at <https://www.metrotransit.org/trip-planner>



Orange Line Bus Fleet



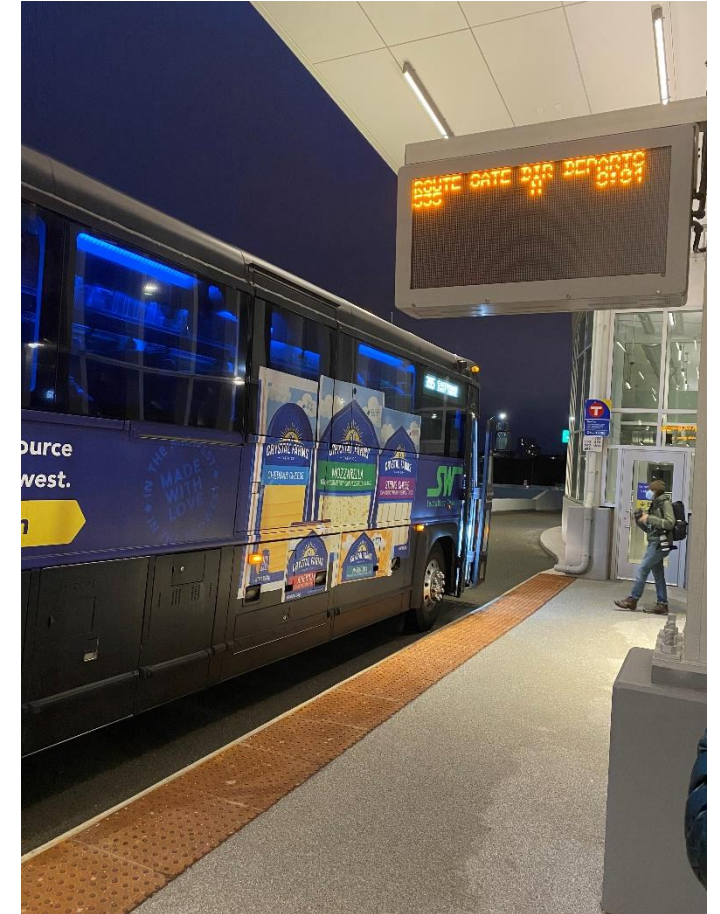
60-foot Articulated Bus at Knox Ave Tunnel



I-35W & Lake Street Station- Advanced Opening October 21



First Day of Service at I-35W & Lake Street Station- October 21



SouthWest Transit Bus at I-35W & Lake St

Operational Readiness- Service Testing and Operator Training



Bus Testing in the Knox Avenue Tunnel



Metro Transit Operators

Grand Opening Events

- Orange Line service begins at 6am Saturday Dec 4
- Ribbon Cutting/Opening events on Dec 4
 - Remarks 1 p.m. at I-35W & Lake Street Station Plaza
 - Dignitary Ride on Orange Line to Burnsville
 - Welcome remarks at Burnsville Heart of the City Station
 - Partner info tables, entertainment, concessions (2-4 p.m.)
- Rides on Orange Line are free Dec 4-6
 - No fare required on Orange Line only
 - Staff ambassadors will ride Orange Line buses Dec 4-6
- Staff ambassadors assisting at stations Tuesday Dec 7 (first day fares are required on Orange Line)



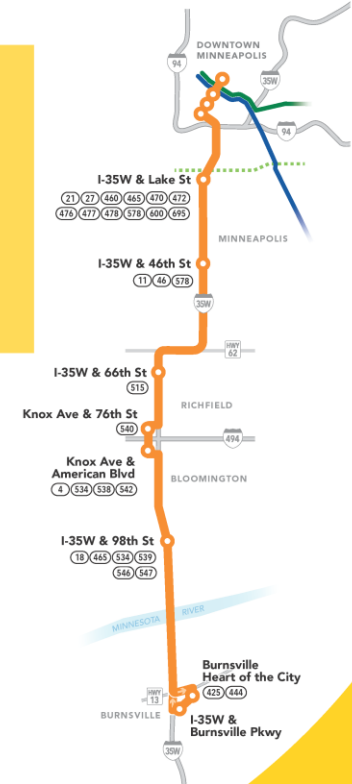
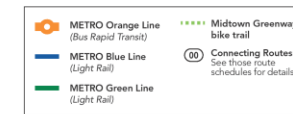
Creative/Media Presence

- Transit fleet
- Digital billboards
- Banner ads
- Community newspaper ads
- Social media
- Metrotransit.org/orangeline



Look at all the connections!

For help planning your trip, use the Trip Planner at metrotransit.org or call a friendly transit expert at 612-373-3333.



Questions/Discussion

