



Destination 2040

April 20, 2022

Locally Led, Intentional, Conversation-Based Process

DESTINATION BELLE PLAINE 2040

EXAMINE COMP PLAN
STRUCTURE



Slowed growth = "minor" update;
Like-minded City Admin tasked CDD
w/ making plan meaningful/results
oriented

COHESIVE
ELECTED LEADERS



Majority change-over in Council.
High functioning, primarily apolitical,
open to ideas & community minded

STAFF ROLE: LEAD, LISTEN
& CONNECT THREADS



Provide context for discussion,
listen/clarify & connect threads in an
acceptable narrative

Driver of equity (and all Comp Plan) work

"A perpetually sustainable, complete, and livable City for all people, seasons, and generations"



Economics

Overwhelming consensus priority:
Sustained Growth

What makes that happen?
People & Spaces

What does each person need
to be successful?

"Complete"

Coalescing Conversations Shared



Community Engagement - Rural

Quarterly "Meeting of Minds"

Council, appointed officials (EDA, PZC, Parks, Design), senior staff, & public. Convene process and direction and provide insight on individual elements (including community health, wellness & resilience).

Community Events

City "community conversation" events (with a draw) addressing a variety of topics including plan related. Also traditional open house. Meeting with businesses and chamber. Meeting with developers.

Mobile Meeting

Took a quarterly meeting on the go. Attendees "on the spot" what place means to them, what they do there, who they see there, what makes them comfortable & what makes them uncomfortable.

Awareness Of Vision, Results

Press releases to newspaper, City newsletter, City website, flyers created.

Challenges/Successes



Piecing Together

Having uncomfortable discussions

Balancing Abstract & Granular

Commit to Trying vs. Arriving

Multiple Manifestations

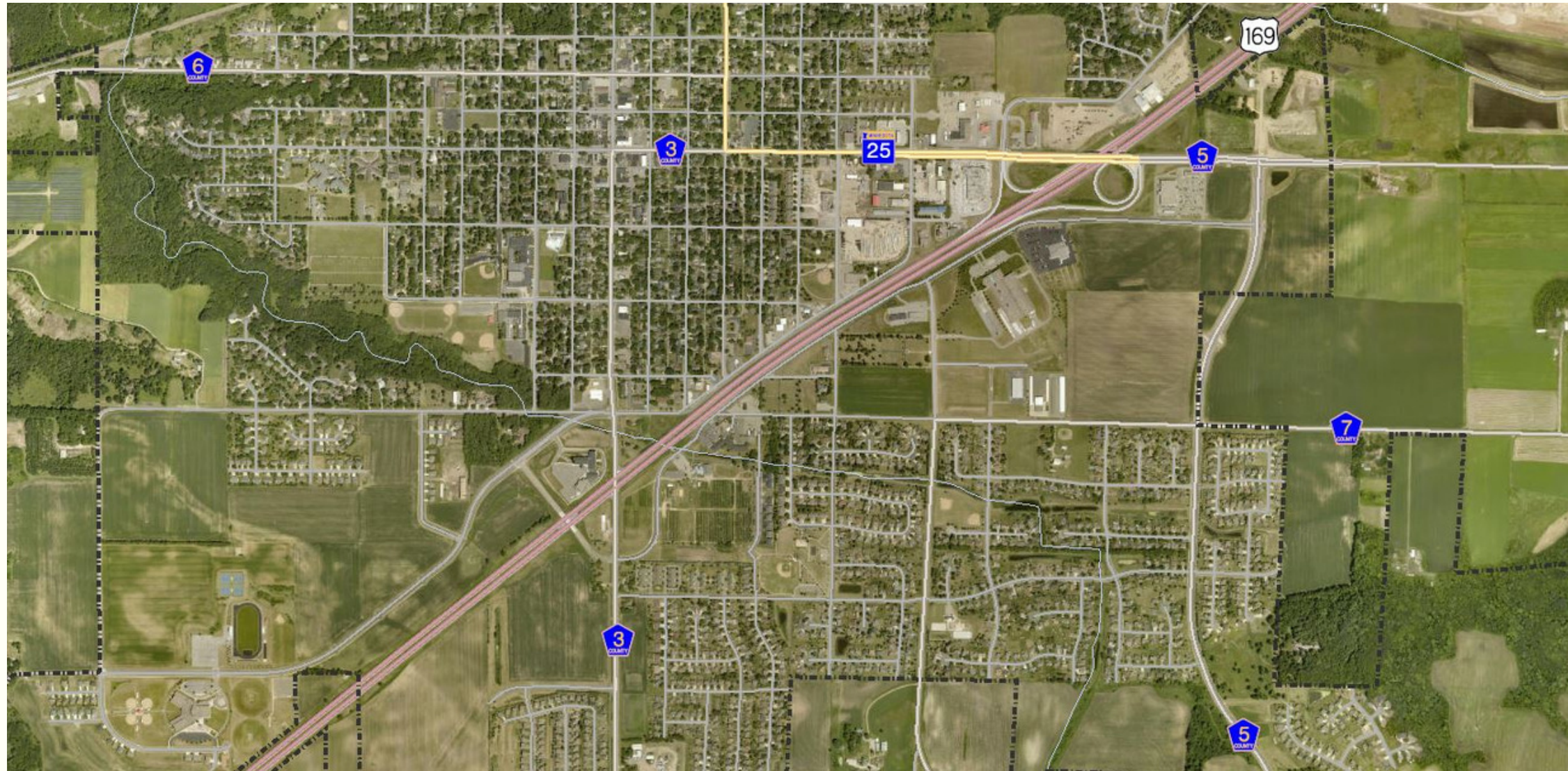
Politics

Staff Integrity vs. Advocacy

What is City Working to Achieve?



What Might Success Look Like?



A perpetually sustainable, complete, and livable City for all people, seasons, and generations

