

HOUSING AFFORDABILITY, TRANSPORTATION SAFETY AND CULTURE & COMMUNITY

By: Ler Say, Damanta Basnet, Ibrahima Ka

WORLD YOUTH CONNECT

- Youth led non -profit organization.
- Established in 2021.
- World Youth Connect magnifies the importance of youth involvement in the community while creating a positive environment to increase youth voice in public.



OVERVIEW

- Issue of housing affordability, transportation safety, and community/culture
- Why are these Issues Important
- Values & Visions
- Reflections and Recommendations



ISSUE 1: AFFORDABLE HOUSING & SAFE COMMUNITIES

Define the issue

- Cost of housing is increasing, people still earn the same salary.
- Rent isn't the only bill people are paying.
- Difficult to find affordable housing.
- Affordable housing= poor living conditions, unsafe neighborhoods.

Core values

- Affordability
- Safety
- Sense of Community



WHY ARE THESE ISSUES IMPORTANT?

Directly affects our communities

- Minorities & POC in many ways.
- Students paying loans.
- Immigrant parents working low -
income jobs.

FINDINGS:

Who did we interview?

- 24 Youths
- Youths age 13 -26
- Living in St. Paul
- Mostly POC
- Interviews show people struggling with the issue are POC and immigrants.
- Housing experience as an immigrant
- The tradeoff between culture and safety



Examples of affordable houses:



VISION STATEMENTS:

- The region makes affordable housing more accessible through increasing minimum wage and decreasing housing cost.
- The region's residents who cannot afford housing receive resources to ensure they can pay for housing.



ISSUE 2: CULTURE & COMMUNITIES

Define the issue

- Immigrants and minorities losing their heritage due to location.
- Community safety and bonding.
- No sense of community depending on where you live.



ISSUE 2: CULTURE & COMMUNITIES

How issues connect to values

- Unity: When the community comes together feeling safe
- Culture: It's only possible to keep a culture when there is constantly something bringing people together like event planning, cultural events, etc.
- Outdoors: It's more welcoming when the events are outside and around parks so that others can come in freely



WHY ARE THESE VALUES IMPORTANT?

- Community gathering is necessary
- Without social interaction within culture, people slowly start drifting away from their heritage.
- It's harder to keep a heritage going as the new generation are less exposed to the culture.

FINDINGS:

- Youths want their community to bond, and feel safe around each other

Experience

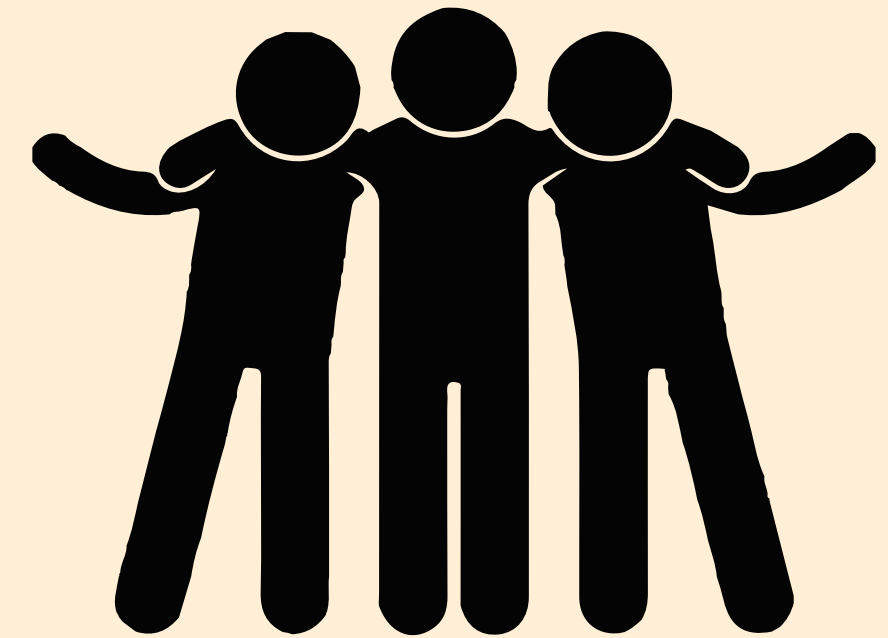
- The neighbors coming together to push a car out of the icy driveway
- “Culture is deleted once you get into some type of community. There’s a lack of identity, kids stop being and practicing their own cultures.”



VISION STATEMENT

Vision Statement

- The region has a population that feels connected, unified and has trust between us.



Importance

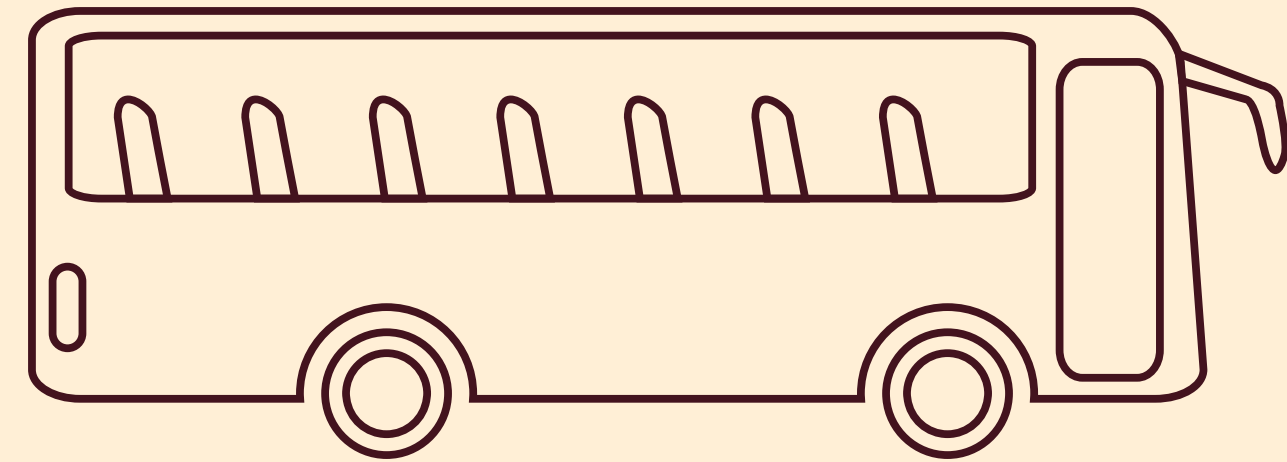
- Without a trust or bonds inside the community there will be a gap in the community relationship



ISSUE 3 : TRANSPORTATION SAFETY

Define the Issue

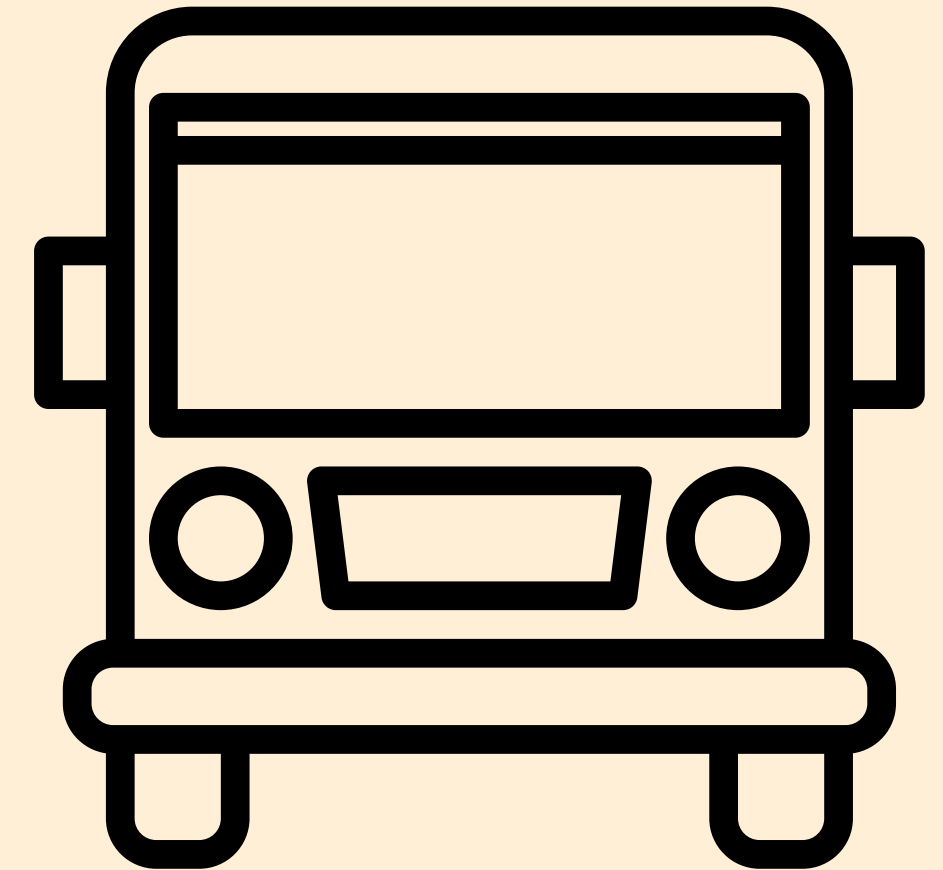
- Public transportation for the most part has not been a safe mode of transportation in the metropolitan area.
- Sidewalks are hard to walk on due to weather or them having bad maintenance.
- Different choices in types of transportation are needed to make the system more accessible to all groups of people.



ISSUE 3 : TRANSPORTATION SAFETY

How issues connect to values

- **Safety:** Ability to use public transit without feeling unsafe or in danger
- **Accessibility:** Making all modes of transportation safe for everyone
- **Choices:** Give people choices on how to transport themselves, don't make areas or situations where they might be forced to a certain one



WHY ARE THESE VALUES IMPORTANT?

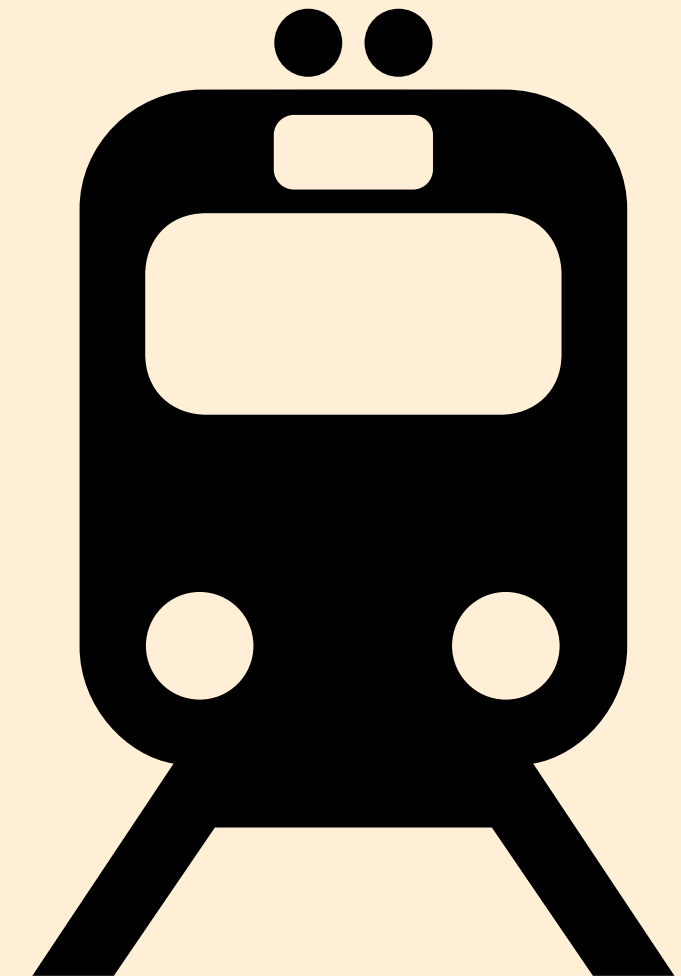
- Transit safety is necessary to encourage the use of public transportation
- Making transportation accessible gives more transportation options to marginalized groups.
- Having more options for transportation will improve traffic, road safety reduce the impact on the environment

FINDINGS:

- Over half of our interviewees had a violent experience on public transportation.
- 54% increase in crime on public transportation in 2023
- Youth have had bad experiences in the areas transportation which makes them not want to use it.

Experienc

- My uncle was robbed on the lightrail when I was with him
- “Policy should focus on creating a more accessible transit network especially in suburbs and it might make it easier for people to travel from and to those areas.”

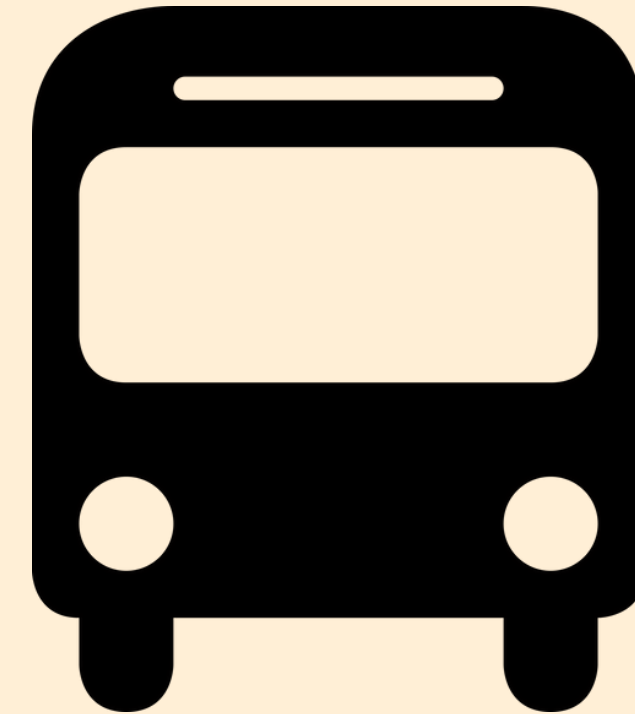


Vision Statement

- The region has safe multimodal transportation options: safe crosswalks, sidewalks for pedestrians, and roads.

Importance

- People rejecting a form of transportation due to safety puts more stress on other forms like highways.



RECOMMENDATIONS

Housing Affordability

We recommend a development guide that takes care of the needs of underserved communities. This can be done by decreasing housing costs in the area and changing the definition of affordable housing.

Culture and Community

We want to see culturally significant community meeting spaces that are able to bring people together. We also want events and programs that unite the community and make people feel safe together.

Transportation

We recommend a safer transit system that addresses the issues of violence and crime. We also want our streets and roads to be pedestrian safe by implementing more safety precautions for pedestrians.

REFLECTIONS:

- This experience gave us an opportunity to reflect on our own experiences and make our voices heard. Through the project, we were able to witness the experiences of many people in the community and see how change is necessary in many of these areas. Additionally, we learned about the process of research.

THANK YOU!!