

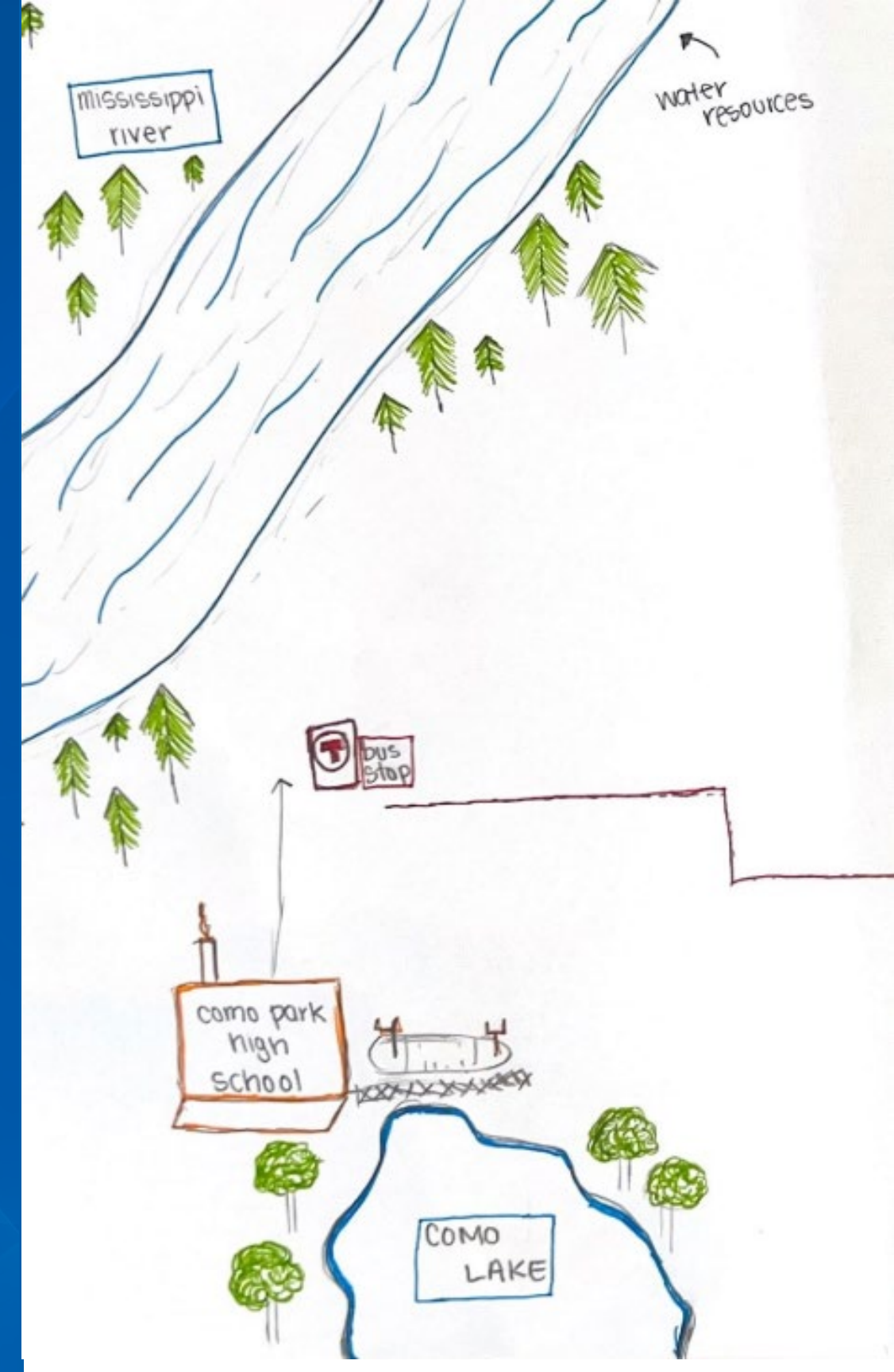


Imagine 2050 Engagement update

Activities and theme analysis

Darcie Vandegrift, PhD, Principal Researcher

November 2023



Imagine 2050 engagement update



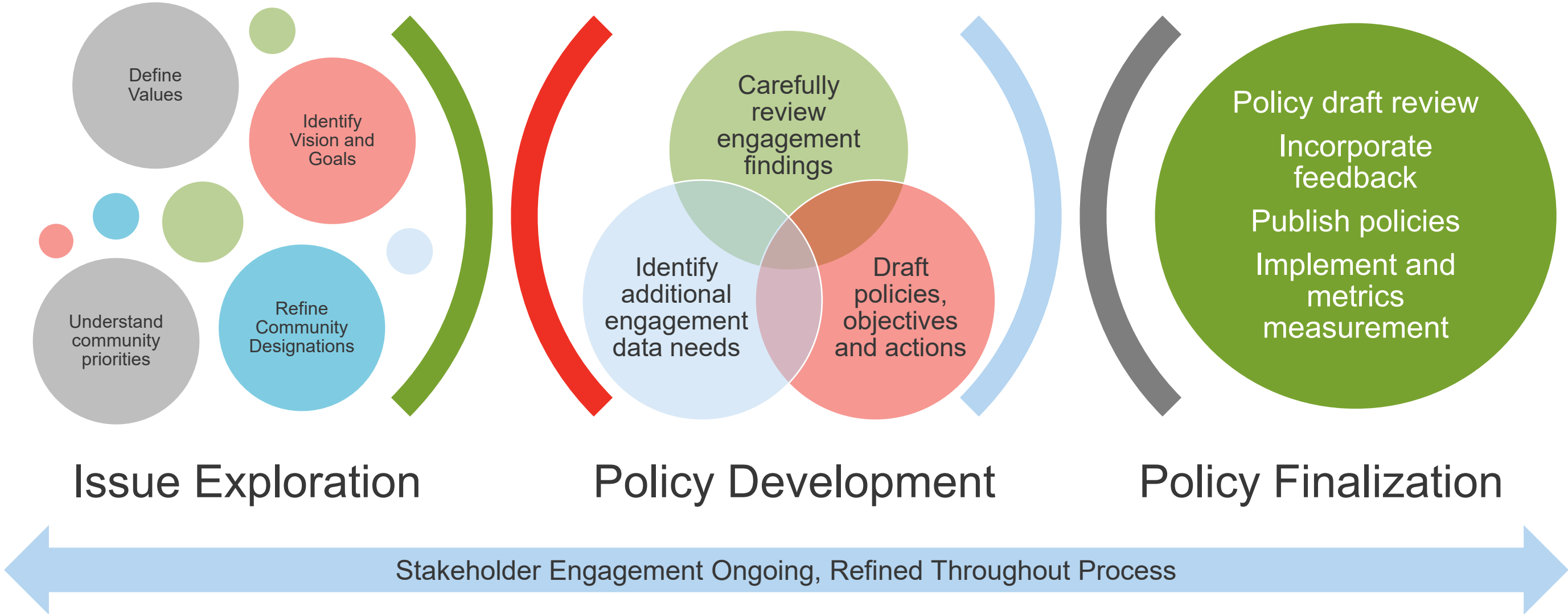
Today's conversation

- Engagement process and stakeholder groups
- Competing goals found in engagement (discussion)
- Engagement themes by regional goal
 - Equitable and inclusive region
 - Healthy and safe communities (discussion)
 - Dynamic and resilient region
 - Protect and restore natural systems
 - Lead on climate change
- Future efforts (discussion)

Engagement process



Policy development process



Engagement approach

-
- Community-centered, equity-focused
 - Integrated and collaborative
 - Data and values-driven
 - Expansive
 - Recursive and accountable

Stakeholders and top-level needed advice



Government and private sector partners: Historic and ongoing collaborators

Elected & Appointed
Officials

Local Staff

Private sector

Nonprofits

Minnesota & Federal

Residents and advocates: Extensive and equity-focused conversations

Historically excluded
communities

Residents using Met
Council services

Youth

New Minnesotans

Advocates

How engagement data are used

Vision and Values

- Refine vision and values using complex array of perspectives
- Establish priorities
- Examine context and implications
- Introduce high-level goals into policy-level conversations

Policy

- Identify gaps and controversies; write policy using feedback from differing perspectives
- Inform goals, objectives, policies, frameworks, and actions
- Provide context to explain policy decisions
- Suggest metrics and measures

Resources

- Identifies investment priorities and funding
- Learn areas for needed technical assistance and convening
- New program development and exploration of new solutions

Reviewing engagement findings tonight



Key details:

- Analyzed results are from conversations with over 1,000 stakeholders, hundreds of hours of engagement, hundreds of pages of analysis, and findings across all policy areas.
- Competing priorities are identified.
- Findings are themed by regional goals; only top-level findings presented here.
- Supporting quotes are in information item memo.

Stakeholders articulate competing priorities that transcend either/or thinking



Bold action on key concerns (climate, equity, affordability, water sustainability, natural systems protection) competing with local control, capacity/resources.



Desires for low-density housing and expanded transportation infrastructure competing with addressing climate change, walkable communities, or multimodal transportation options.



Locations of high-quality affordable housing competes with desire for locations with cultural belonging and community ties.



Safety is complex, requires understanding multiple perspectives. A top priority for Transportation Policy Plan government stakeholders competes with police concerns from other stakeholders.



Lack of affordable housing for young, older, and diverse family types competing with goal to maintain historic character, maintain low-density communities



Preservation of agricultural land and green space competing with housing development

20-minute discussion: Competing priorities

Advice sought:

- What is your advice to address these competing priorities?
- What have you been hearing from stakeholders on these topics as you engage with communities in your district?

Competing priorities topics:

- Bold action vs. local control, resources
- Low-density vs. climate change or desire for walkable, multimodal options
- High quality housing is not always where residents want to live.
- Safety is complex, with many components. Different feelings and views on policing
- Desire for diverse new housing types vs. historic character and low-density
- Preserving land vs. new development

Engagement themes by regional goal

Regional Goals

1. Our region is equitable and inclusive
2. Our communities are healthy and safe
3. Our region is dynamic and resilient
4. We lead on addressing climate change
5. We protect and restore natural systems

Equitable and inclusive region



Residents experience challenges accessing Met Council systems and services.

Local governments largely support prioritizing equity in Met Council efforts; they want the Met Council to be aware of local context and to offer clear guidelines and support.

Photo credit: "Redlining in Minneapolis" story map

Healthy and safe communities



Residents want to live in communities that support social connections and vibrant cultural landscapes. Stakeholder recommendations include multimodal travel, outdoor access, walkable communities, acknowledging historical inequity, and land use support for small businesses.

Connection to nature provides physical, emotional, and mental well-being. Water quality, environmental education, park system maintenance, and transit access were mentioned as helping residents connect to nature. This connection is valued as a refuge from heat and other climate change effects.

Safety is a multidimensional issue, and a particular concern for pedestrians, cyclists, drivers, and transit users. Rural crashes, affordability-safety tradeoffs are concerns. Conflicting views over use of policing.

15-minute discussion: Equity, healthy and safe communities

Advice sought:

- How should staff prioritize and incorporate these engagement findings?
- What have you been hearing from stakeholders on these topics as you engage with communities in your district?

Findings review:

Equitable and inclusive region

Challenges accessing systems

Support for equity goal from local governments

Healthy and safe communities:

Social connections and support for cultural landscapes

Desire connection to nature

Safety a concern, multidimensional

Dynamic and resilient region



Residents struggle with housing affordability, lack proximity to desired cultural landscapes, and safety. High housing costs pressure moves from neighborhoods where they'd like to live.

Community land use needs include spaces for growing food, outdoor recreation, small businesses, and community interaction.

Regional thinking, collaboration, accountable policy implementation, understanding local context are key to region's success.

Lead on climate change



Government stakeholders expect the Met Council to lead the region on climate change issues.

Stormwater issues and smart growth are top-level climate concerns for local government.

Requests for support around Met Council leadership on climate change include **additional funding, technical assistance, and data resources**. Local government and residents seek idea sharing, funding, messaging assistance, research and mapping support.

Protect and restore natural systems



Habitat restoration and water resource protection are important for ecosystem health. Drought, as well as water and park pollution, are emerging concerns. Clean water is of essence for current and future generations.

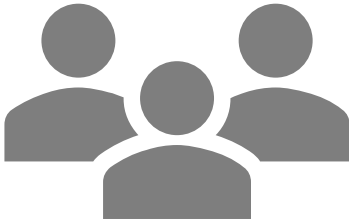
Preserving and increasing green spaces, tree canopy are important. Green space in land use, large acreage park reserves, a metro natural resources corridor are desired efforts. Regulatory mechanisms and incentives for green spaces are needed.

Connectivity is important. Humans are a part of the environment. We need more connection to nature and across valuable ecosystems.

Future efforts, final discussion



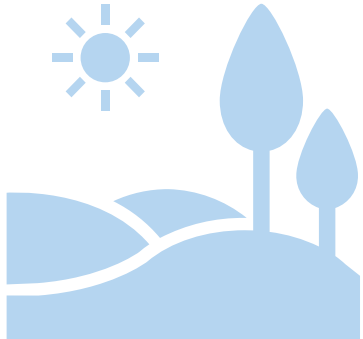
Future efforts and initiatives



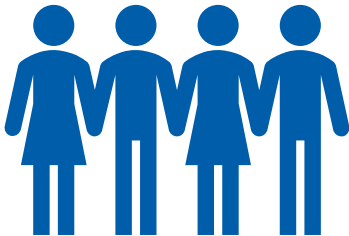
Technical advisory groups working with engagement data



Local government engagement:
One-on-ones, rural engagement with food producers, topic-based focus groups



Study results:
Water Values Survey, Transportation Needs in Everyday Life, Parks Historical Cultural Study, Housing analysis of developers' perspectives



Population forecasts engagement



Second regional land use cohort expands beyond youth



Arts in Policy Planning, "Creatively Imagine 2050"

20-minute final discussion

Advice sought:

- How should staff prioritize and incorporate these engagement findings?
- What have you been hearing from stakeholders on these topics as you engage with communities in your district?
- **What are ways we can help you carry *Imagine 2050* engagement into communities in your district?**

Findings review:

Dynamic and resilient region

Challenges accessing systems

Support for equity goal from local governments

Climate and natural systems

Met Council leadership expected

Habitat, water resources, green space, tree canopy

Human/environment/ecosystem connections

Storm water, smart growth

Technical support



Darcie Vandegrift

Principal Researcher,
Community Development-Research
Darcie.Vandegrift@metc.state.mn.us
(651) 602-1669

