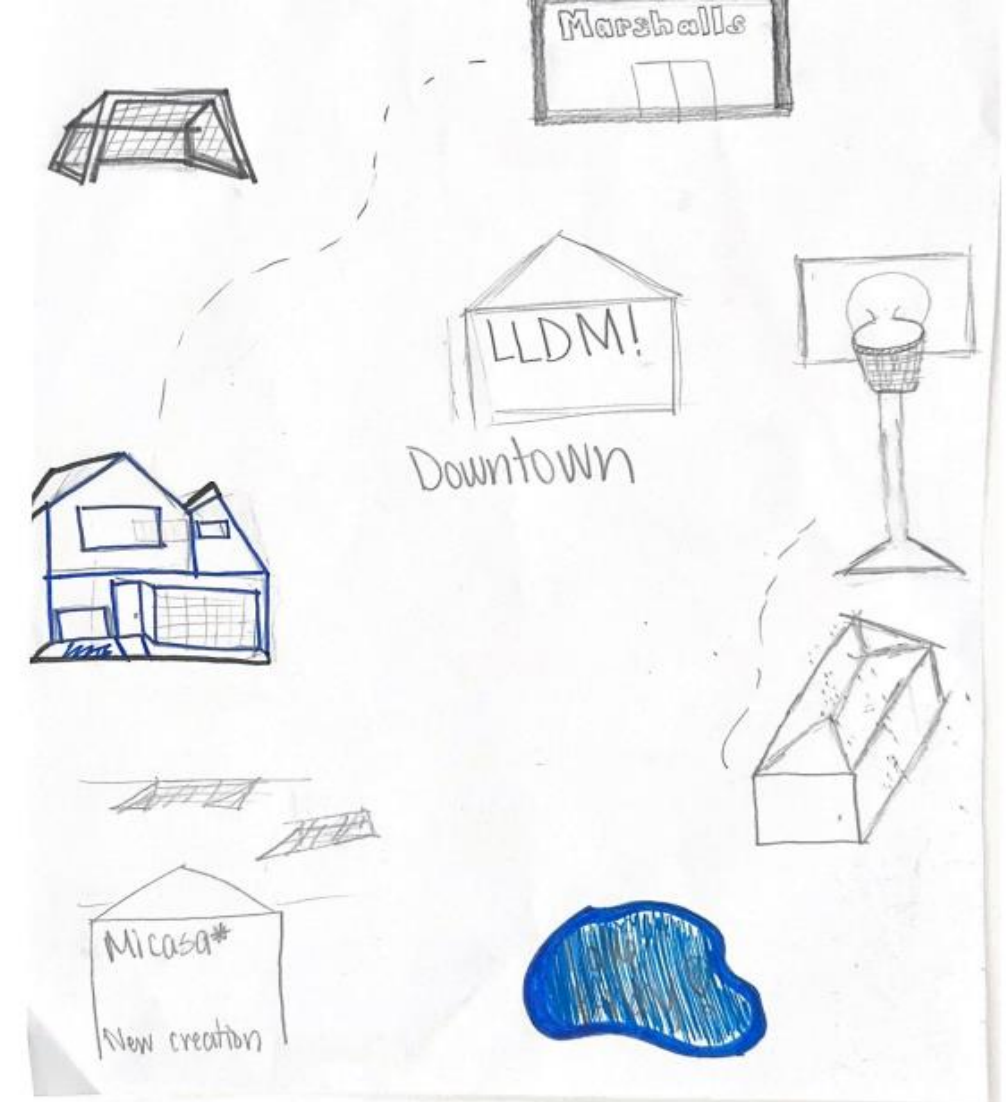


RDG Community Collaboration

Magaly Ruiz Barrios

March 20th, 2024



Overview



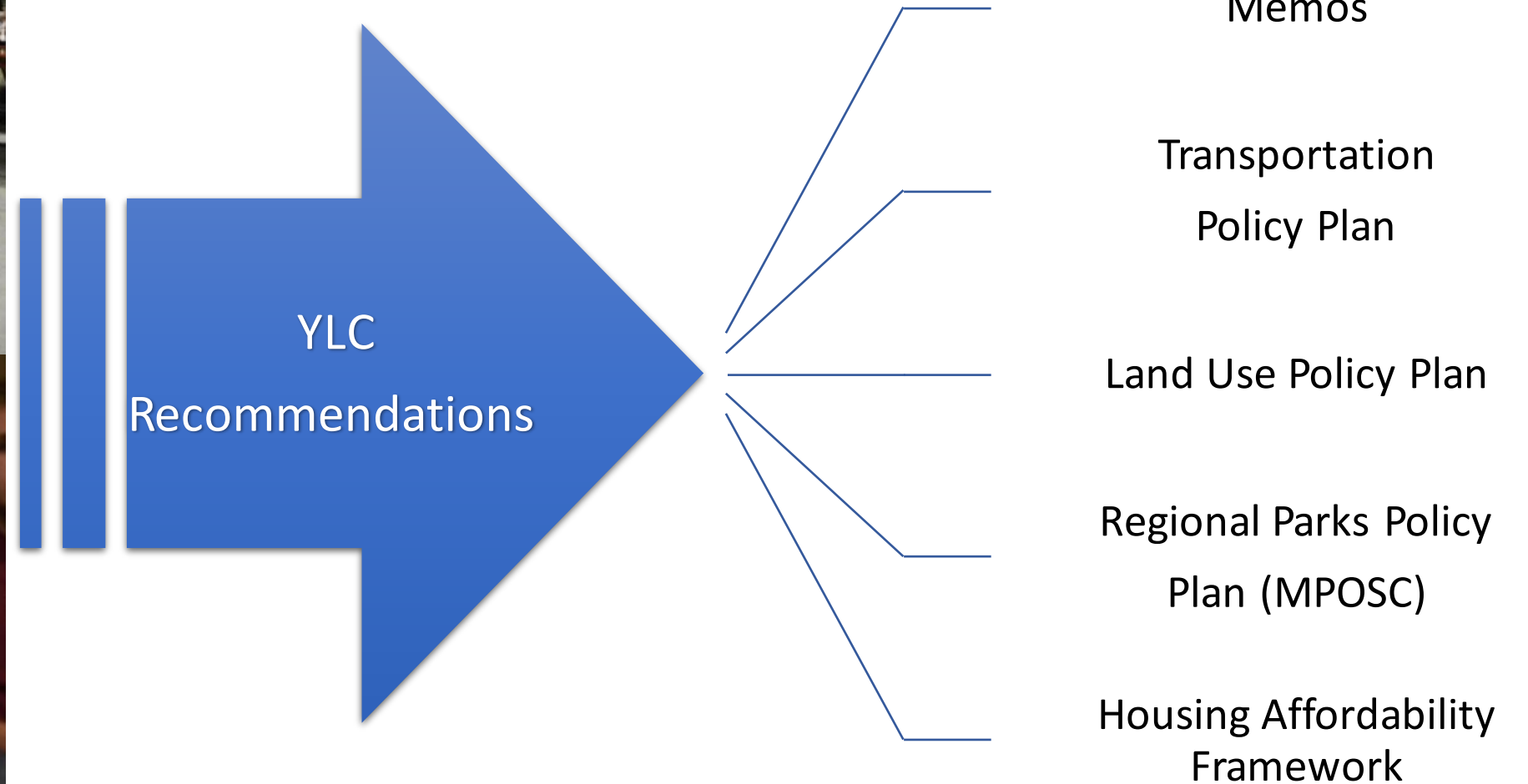
Outline

- Young Leaders Collaboration Recap
- RDG Workshop Collaborations
- Overview of project
 - Project Goals
 - Community Centered Design
- Conclusion

Young Leaders Collaboration



Highlights of Outcomes



Who are we engaging now?



Project Goals

Create and establish meaningful connections with underrepresented and historically marginalized individuals.

Foster capacity for civic engagement and policy work.



Commit to accountability and widely share participant ideas and expertise.

Embed equity in RDG process (with focus on Land Use Policy)

October 2023 – March 2024

Connecting to the Met Council

- Build capacity and understanding of the Council and 2050 RDG process
- Study policy areas and learn how they connect to their lives and community.

Statistics and Stories (data)

- Explore data and experiences to understand the region now.
- Map the future we want, identify what a successful region looks like based on qualitative data.

Setting Priorities

- Identify top priorities from data, create interview questions around priority areas, and identify priorities from qualitative data.
- Create communication strategy and share work with Council.

Personal Development & Capacity

- Make connections, build trust, and collaborate.
- Identify and work on strengths and growth areas.

40 hours over 6 workshops for each organization

Community Centered Workshop Design

Story Sessions

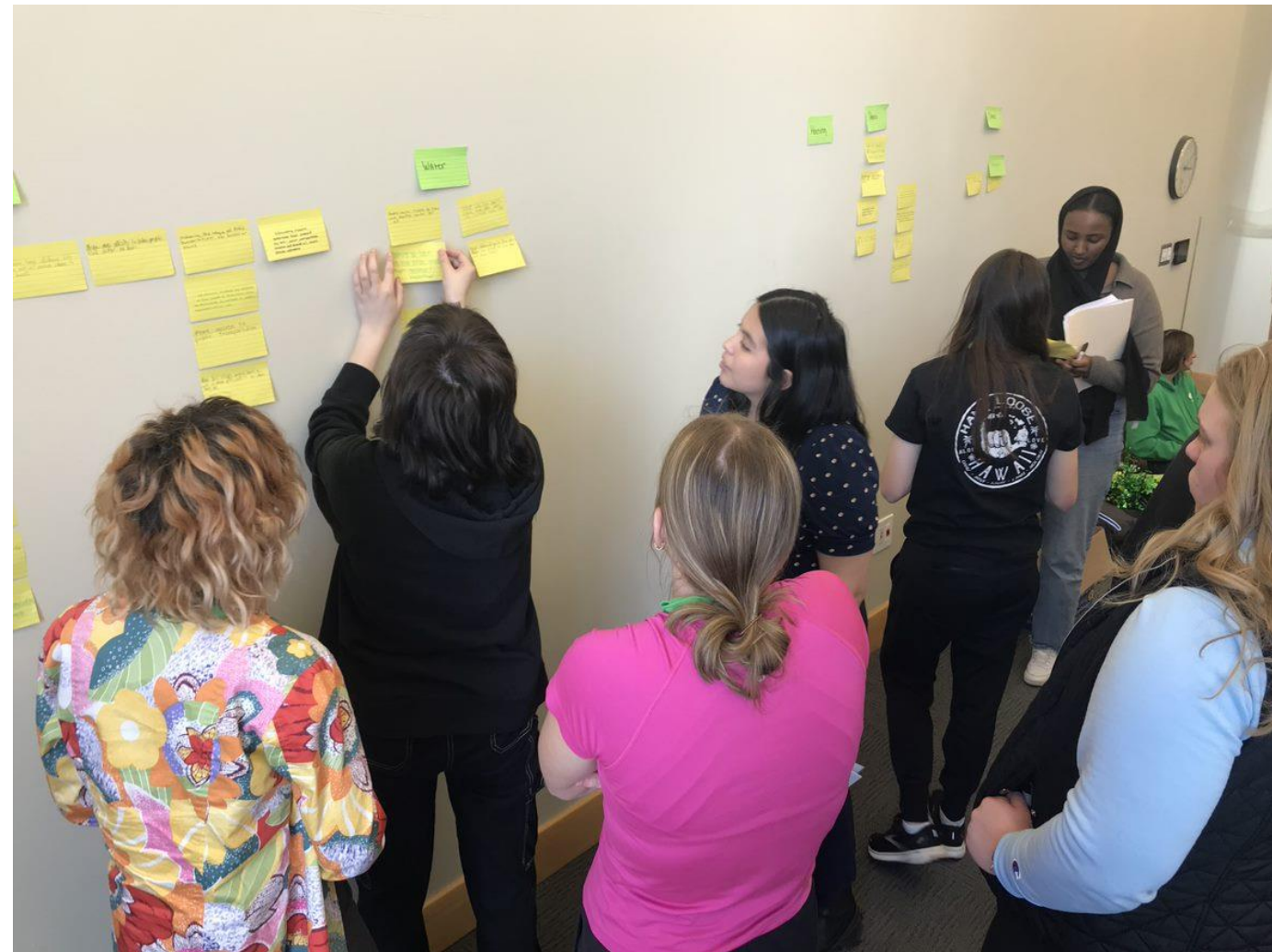
- Review data based on interest areas.
- Discuss connections to data
- Share personal stories and experiences

Interviews

- 3 peer-to-peer interviews per participant

Field Notes

- Met Council staff take detailed notes at all workshops



Conclusion



Agenda for today

- Mi Casa
- Community Resource Center
- COPAL
- Next Steps

Affordable housing and transportation in Shakopee and Chaska



Who we are



Mi C.A.S.A.
COMUNIDAD, APOYO, SOLIDARIDAD Y AMISTAD

Overview



Transportation
options and
connected
communities

- Limited transit
- Lack of community spaces
- Relying on cars



Affordable
Housing that
meets the
communities
needs

- Shortage of affordable housing
- Housing costs that match job pay

Data Sources



30

COMMUNITY INTERVIEWS

95% of our interviews were residents of Shakopee and Chaska.

7

WORKSHOPS

Group discussions and learning about the Met Council

Transportation Options & Connected Communities

- Limited public transportation options
- Suburban area of Shakopee & Chaska
- Lack of Community Spaces that are free or inexpensive
- Young people that don't have driver's license



Quotes

Transportation

“El transporte público es un catalizador para la creación de empleo. Es un vínculo con empleos y oportunidades para personas de comunidades grandes y pequeñas. Teniendo acceso a transporte público podría darnos más oportunidades de trabajo.” (The public transportation is a catalyst for job creation. It is a link to jobs and opportunities for people from large and small communities. Having access to public transportation could give us more job opportunities.)

“I would like to be able to go straight to the University. I think that is huge, especially for students. I want to go back to school but one thing that stops me is the commute time. The universities are in Saint Paul and Minneapolis and there aren't buses that go straight, and with a car, the commute time can take forever, especially in the winter.”

“I would like to go to places farther away from here. Like going to the state fair or the Mall of America. I can't go right now because no one is willing to drive me that far out.”

“It (indoor sports field) would be beneficial because you can use it for the winter so every sport can use it, soccer, football, lacrosse.”

Quotes

Connected Communities

Recommendations

TRANSPORTATION

- Increase transit routes & stops in the Shakopee/Chaska area
- Create programs to teach students about public transit

CONNECTED COMMUNITIES

- Encourage communities to develop connected neighborhoods





ISSUE 2: HOUSING

<p>Define the Issue:</p>	<p>Why is this issue really important to our community?</p>
<p>The lack of affordable housing in Shakopee and Chaska forces families to live in houses that are often too small for the number of people living there.</p>	<ul style="list-style-type: none">• Wages for jobs in the Shakopee/Chaska area do not allow residents to afford the cost of housing.• Families find it uncomfortable to live in a small shared spaces, often in an apartments.

QUOTES/PERSONAL EXPERIENCES

- “I live with just my mom. They are paying her the same even though they are raising the rent, utilities are going up.”
- “We have been wanting to move for the last few years but we want to stay in the Shakopee area because that is where our friends and community are. But it is still hard because housing prices are going up.”

Recommendations



HOUSING

- Pursue regional policy that encourages suburban areas like Scott County to build more affordable housing and a variety of affordable housing for all types of families
- Provide more education on the housing market and affordable housing

Reflection



- Meet new people
- Learn about the Met Council
 - Goals
 - Regional Planning Guide
 - Setting Plans for the Future
- Developed Skills
 - Interviewing
 - Public Speaking
 - Creating Presentations
 - Critical Thinking
- Time Management
 - Workshops
 - Homework
 - Planning Ahead
 - Meeting Deadlines

Thank you





2050 REGIONAL DEVELOPMENT
GUIDE RECOMMENDATIONS



AFFORDABLE HOUSING
&
GREEN SPACES

Presented by
Community Resource Center and the
Shakopee Diversity Alliance

ABOUT US



COMMUNITY RESOURCE CENTER
IN PARTNERSHIP WITH THE
SHAKOPEE DIVERSITY ALLIANCE

Presented by: Kafe Abdi, Sumaya Mursal,
Misty Van Voorst and Garaad Muse

INTRODUCTION

Community Resource Center



Shakopee Diversity Alliance



KEY RECOMMENDATIONS

HOUSING
AFFORDABILITY

GREEN SPACES



PROCESS

GROUP
DISCUSSIONS

PREPARING
QUESTIONS

CONDUCTING
INTERVIEWS
WITHIN THE
COMMUNITY

EXAMINING
COUNCIL DATA
FOR ANALYSIS

REFLECTION



RECOMMENDATION #1: DIVERSE HOUSING TYPES ARE AFFORDABLE AND AVAILABLE TO ALL COMMUNITY MEMBERS FROM A DIVERSE BACKGROUNDS.

- Every community member in Scott County must have access to homes that work for their households and lives, including youth and multigenerational families.
- Their homes need to be in “safe” affordable neighborhoods, they also need to accommodate larger families.
- Community members should also have resources for Sharia-compliant financial solutions as well.



Quotes

1 ACCESS

"I have a large family and I couldn't find a single home that fits my family, which forced us to live in 2 separate homes."

2 AFFORDABILITY

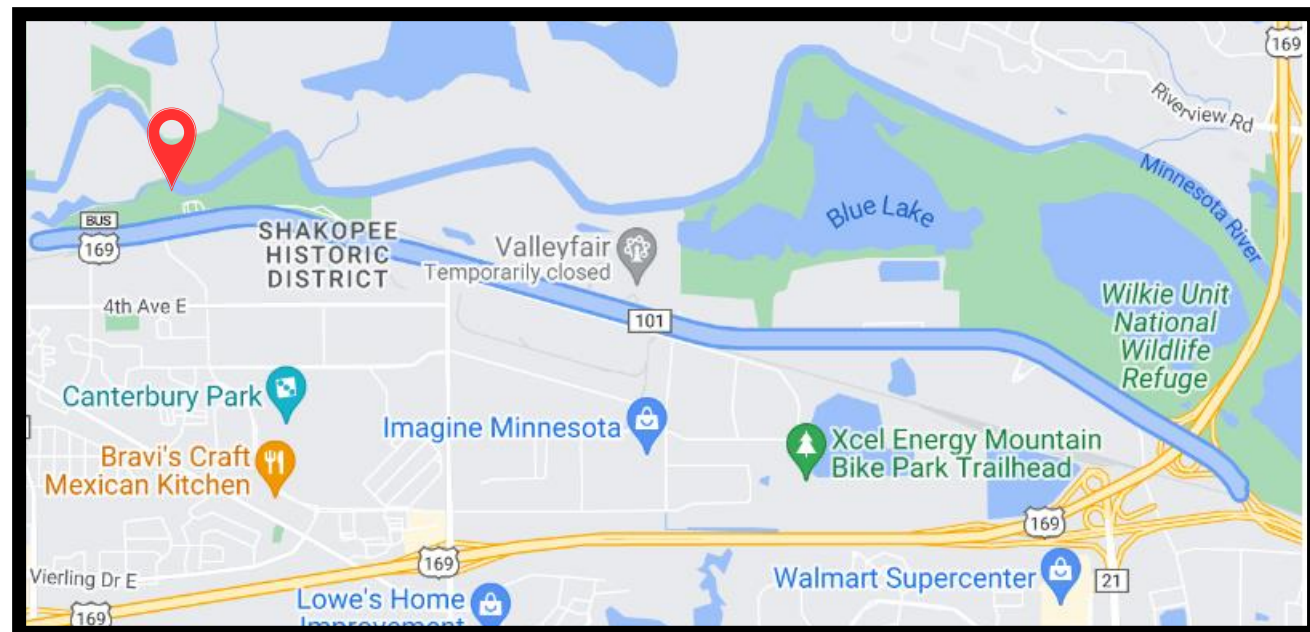
"You have to be able to afford the space that fits everyone. Or buy an older home that is more affordable, knowing that you have to add on, which is also very costly."

3 INCLUSIVITY

"I put offers down above the asking price and they were not accepted. I believe race may have played a role in this."

RECOMMENDATION #2: GREEN SPACES ARE MORE AVAILABLE AND PROTECTED

- Green spaces in Scott County need to be in areas that are safe to access. Residents shouldn't have to cross busy highways or construction sites to enjoy.
- Green spaces should be located in areas that bring diverse group of people together to learn from and enjoy each other and the space.
- Green spaces should provide a space for communities to grow food.



Quotes

1 ACCESS

“I really like to see in the community an open space with green grass/trees that I could use for a walk and not just for myself but for everyone.”

2 AFFORDABILITY

“Families can’t afford bills and taking kids to indoor playgrounds.”

3 INCLUSIVITY

“Every neighborhood should have access to green spaces to promote health, wellness and efficiency.”



IMPORTANCE



- Green spaces provide a place for residents to relax and focus on their mental and physical well-being.
- Recreational areas in Scott County need to be free and accessible to all.
- Safety and connecting communities should be the primary goal of all recreational areas.
- Recreational areas are how we connect to our neighbors and grow as a community.

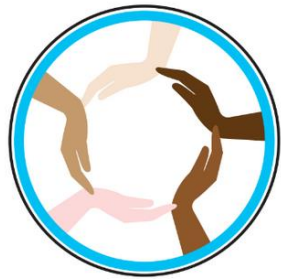
RECOMMENDATIONS AND GOALS

- Enhance culturally competent housing resources to address language and cultural barriers, improving accessibility for residents in search of housing.
- Advocate for regional policies promoting increased affordable housing in Scott County, addressing barriers for families of all sizes, including large and multigenerational households.
- Work with communities to ensure that green spaces are equally distributed, ensuring accessibility to all residents.
- Encourage enhanced green spaces with trails, playgrounds, and community gardens that appeal to nearby residents.

REFLECTIONS

In shaping a regional development guide, prioritizing affordability and embracing green spaces is essential. Affordability ensures that progress benefits all, fostering inclusivity. Integrating green spaces not only preserves the environment but also enhances community well-being, providing a refuge from urban life. Combining affordability and green spaces creates vibrant, accessible, and sustainable living environments, paving the way for a harmonious future.

Thank You



SHAKOPEE
DIVERSITY
ALLIANCE



A BETTER TOMORROW

COPAL Youth Members



Who are we?





Comunidades Organizando el Poder y la Acción Latina

What is COPAL?

Copal is a member based organization dedicated to creating a dignified life for Latinos in Minnesota.

Overview

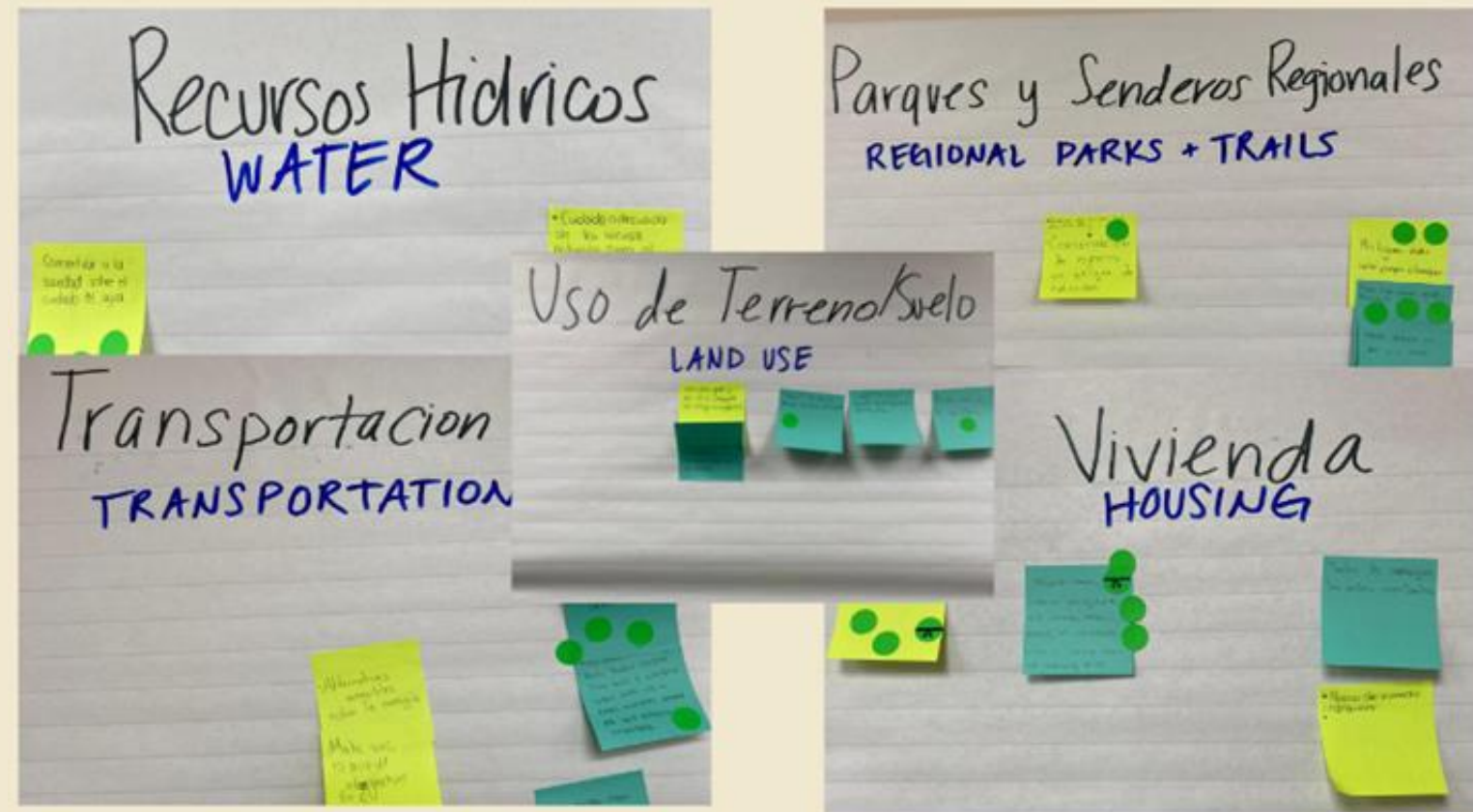


1. Research Process
2. Economic Barriers for the Undocumented
3. Housing Cost and Discrimination
4. Reflections
5. Recommendations



Research Process

- Discussed the impacts of these issues on our lives.
- Conducted 25 interviews.
- Analyzed the results.



Issue 1

Economic Barriers for the Undocumented

Economic Barriers for the Undocumented

- Language barriers
 - Lack of learning opportunities
- Low wages
- Experience needed for jobs
 - Non-transferrable education from home country
- Jobs located far from affordable housing
- Expensive transportation options and unreliable public transportation



“I would like to have a business, but it's very complicated to register it under my name. Also, the language barrier is holding me back. It's difficult because of the language, and many times it's hard to find a school due to the number of people who enroll daily.”



Destiny's Grandma's story: Racing against time



Issue 2

Expensive and Discriminatory Housing System

ITIN Crash Course

ITIN Basics

- Created by IRS in 1990s for immigrants to pay taxes without a SSN
- Comparable to a SSN but without the social security benefits

The Problem

- Many private sector businesses (property management, banks, utility companies, etc.) ask for SSN without an ITIN option
- Many public institutions/programs have operated similarly, even though ITIN holders are MN taxpayers



Housing Barriers

- Discrimination and access to affordable housing eliminate opportunities
- Undocumented individuals face challenges getting loans to buy a home
- Rent consumes the majority of their income
- High cost of housing and low wages keep families from being able to spend time together



“It's a bit difficult to find housing sometimes, mainly because of appearances. Sometimes you look for better places and there are times when they have said, 'Your appearance doesn't give us the image that you can afford this rent.'”



“I have not had that problem of paying rent because I have always had two jobs. What I have suffered a lot is that I have left my daughter alone all the time with a babysitter, and I don't take good care of her. That is the hardest part because I lost all the beautiful years of being with her.”



Our Policy Recommendations - ITIN

- Review ways the Council can incentivize public programs to accept either a SSN or an ITIN as a clear option
- Support any legislative or municipal initiatives that increase or equalize access for ITIN holders



Other Policy Recommendations

- Make public transportation more far reaching and affordable
- Support opportunities for better education and English classes
- Organize regional conversations around supporting immigrant workers
- Plan to have more access to affordable housing in the metro area, and have affordable housing available near job dense areas



Reflections

- Discussion can help awareness
- Exploring how discrimination impacts where people can live in Minnesota helps us understand unequal opportunities faced by different racial groups
- Understanding challenges facing immigrants takes extra efforts because their lives are often hidden from public view





Comunidades Organizando el Poder y la Acción Latina

Thank you

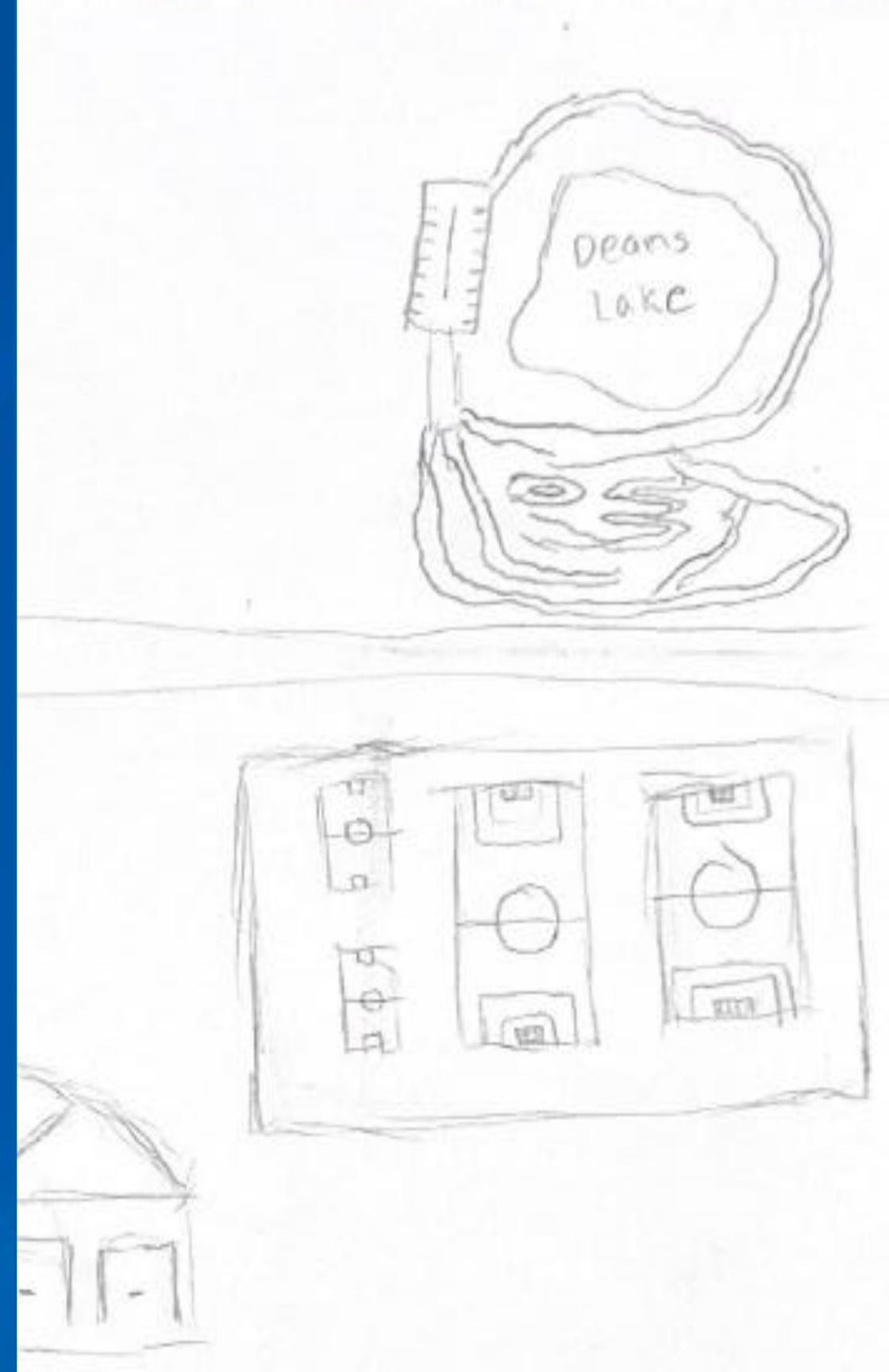


Key Themes and Next Steps

Community Leaders Collaborative

Gillian Greenberg, Associate Planner

March 20, 2024



Draft Land Use Objectives

1 

Respect the relationship with land and water as a foundation for regional growth.

2 

Maximize opportunities for growth in places well-served by transit, bicycle, and pedestrian infrastructure.

3 

Establish vibrant, inclusive, connected and safe communities for people to live in.

4 

Ensure that development activities advance the protection and restoration of natural systems at all scales.

5 

Ensure that people in all types of communities find housing opportunities that align with their needs.

6 

The region achieves equitable outcomes for all people through fair and just land use planning and development practices.

7 

Strengthen the climate resilience of neighborhoods and communities through sustainable land use and development patterns.

8 

Support the economic wellbeing of our region and its communities.

Support economic wellbeing



The cost-of-living forces residents to work multiple jobs and delay pursuing career goals and higher education.

Work permits and discrimination are barriers that prevent immigrants from engaging productively in the economy.

Communities should value immigrant contributions by promoting wellbeing for ALL community members.



Housing that aligns with community needs



Affordable housing for multigenerational households and large families across the region.

Housing opportunities that align with employment options in the area.

Culturally-responsive, multilingual housing resources

Protect and restore natural systems



Greenspace, parks, and natural systems across in urban, suburban, and rural environments.

Outdoor community spaces and gardens that support community connection and mental health.

Green spaces equitably distributed in communities and accessible to all types of residents.

- 1
- 2
- 3
- 4
- 5
- 6
- 7
- 8

Connected multimodal transportation



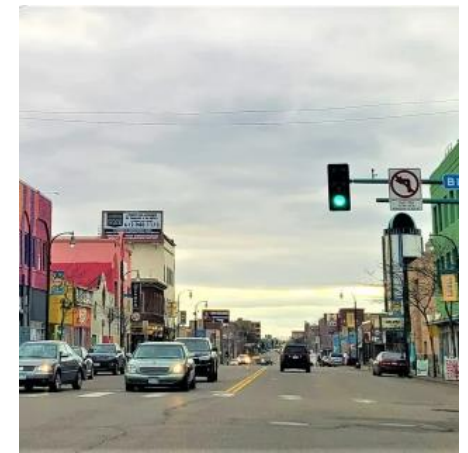
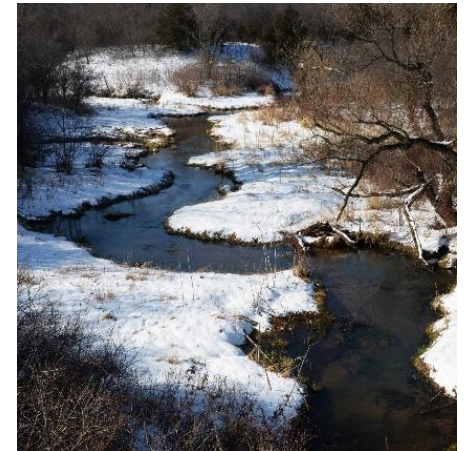
Affordable, reliable transportation system supports access to job opportunities.

Multimodal transportation connects residents to community spaces and destinations in the urban core.

Safety – in all transportation modes, in neighborhoods, in public spaces.

Next Steps

- Community Leader Technical Advisory Group
- Community expertise is included in engagement reflections and shared back with local governments and communities
- Internal memos for each policy area
 - Integration into Land Use Objectives



Thank you

