



**IMAGINE<sup>20</sup><sub>50</sub>**

# Community-Centered Engagement

Committee of the Whole

**Michelle Fure**

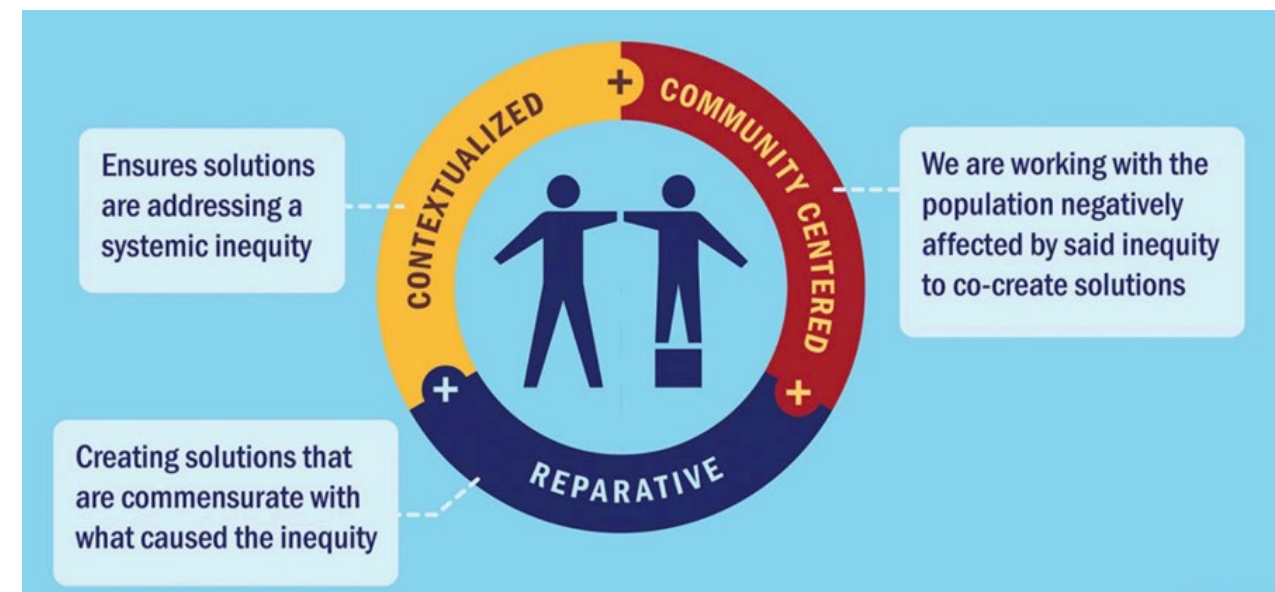
April 3, 2024



# Foundation for Community-Centered Engagement

## Equity Framework for the 2050 Regional Development Guide

- Working with populations to co-create solutions
- Leading with community voices
- Community expertise guides work and we foster participatory decision-making processes
- Transparent
- Proactive
- Innovation and imagination in connecting community voices to developed policy



# From Thrive MSP 2040 to Imagine 2050

## From principles to practice

- Thrive MSP 2040 committed to engaging a full cross-section of the community in decision-making.
  - Shifting to a more relational engagement approach
  - Acknowledging and moving toward compensation for community expertise
  - Co-created engagement plan with community

# Principles for engagement

Equity

Respect

Transparency

Relevance

Accountability

Collaboration

Inclusion

Cultural  
competence

# From Thrive MSP 2040 to Imagine 2050

## From principles to practice

- Thrive MSP 2040 committed to engaging a full cross-section of the community in decision-making.
  - Shifting to a more relational engagement approach
  - Acknowledging and moving toward compensation for community expertise
  - Co-created engagement plan with community
- Imagine 2050
  - Clarity on community-centered
  - Capacity building
  - Community members as leaders
  - Resources and budgets
  - Reparative, respectful, relational, culturally relevant, responsive



# Engagement spectrum

Less  
impact

More  
impact

	Inform	Consult	Involve	Collaborate	Co-create/ Co-lead
Impact	One-way communication	Provide access	Provide access, respond	Partner, address inequity, build capacity	Share power, share agenda, change systems
Participation Goal	Inform, educate about problem and potential solutions	Gather feedback and reflect concerns and interests	Work directly with people throughout the process and include concerns, ideas	Partner with constituencies in defining problems, developing alternatives, choosing solutions	Community, constituents have final decision-making power
Promise to community	"We will keep you informed."	"We will keep you informed, listen to concerns and feedback, demonstrate how feedback influenced decision."	"We will work with you to ensure concerns and desires are reflected in the alternatives developed and demonstrate how feedback influenced the decision."	"We will seek your advice and innovation, include your advice, and recommendations in decisions to the greatest extent possible."	"We will set the agenda together and decide together. We will implement those shared decisions."
Sample activities	<ul style="list-style-type: none"> <li>• Fact sheets</li> <li>• Web sites</li> <li>• Email newsletters</li> <li>• Open houses</li> </ul>	<ul style="list-style-type: none"> <li>• Public comment</li> <li>• Surveys</li> <li>• Public meetings</li> </ul>	<ul style="list-style-type: none"> <li>• Workshops</li> <li>• Working/advisory groups</li> <li>• Deliberative polling</li> </ul>	<ul style="list-style-type: none"> <li>• Shape strategies</li> <li>• Influence agenda setting</li> </ul>	<ul style="list-style-type: none"> <li>• Direct agenda setting</li> <li>• Direct decision-making</li> <li>• Establish expectations</li> </ul>

# Engaging on the framework



- What does transparency look/feel like?
- What does accountability look/feel like?
- What does it mean to truly center community voices in our processes?
- Qualitative and quantitative measures
- Budgeting practices

Potential to partner with EAC, community organizations



# Discussion

- What resonates with you?
- Where would you like us to set clear qualitative or quantitative measures?
- How can our engagement practices better translate to your decisions?



# Thank you!

Michelle Fure

Public Involvement & Communications Manager

---

[michelle.fure@metc.state.mn.us](mailto:michelle.fure@metc.state.mn.us)

