



# Anti-Displacement Framework

Committee of the Whole

Olivia Boerschinger and Maia Guerrero-Combs

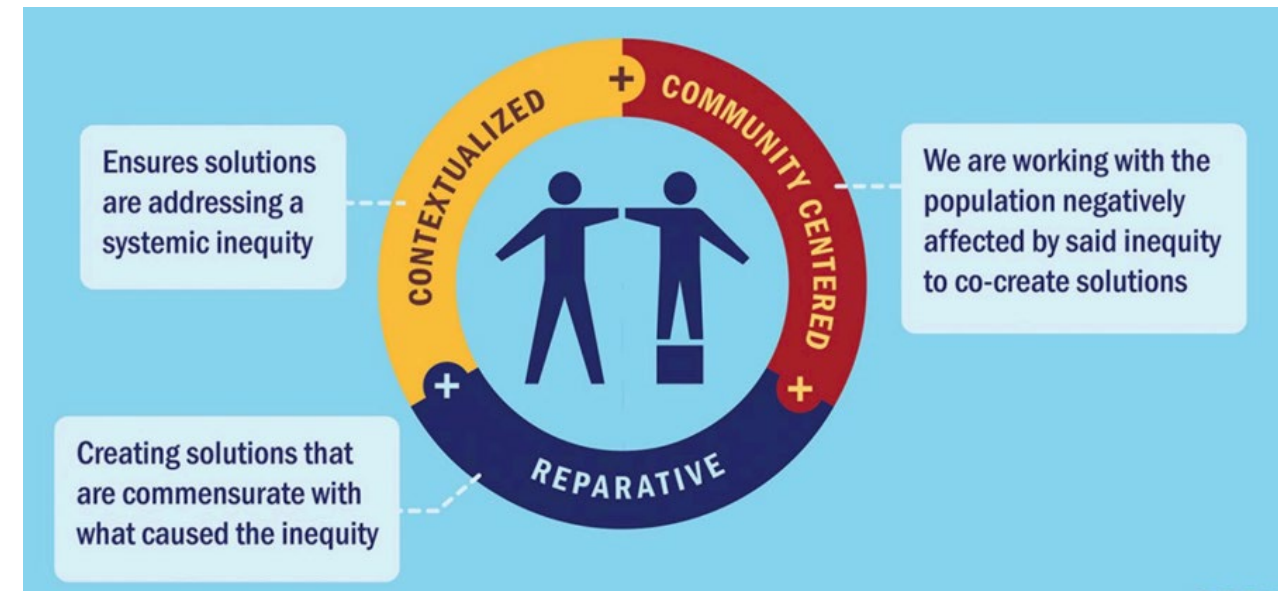
April 3, 2024



# Foundation of Anti-Displacement Framework

## Equity Framework for the 2050 Regional Development Guide

- Acknowledges the region's history of displacement
- Shaped by resident relationship to community – physical homes, amenities, cultural connections, and sense of belonging
- An anti-displacement policy builds on our equity framework of being community centered, contextualized and reparative
- Cultivating relationships with other policy areas to collaborate on integration of Anti-Displacement policies and actions into the RDG



# What is displacement?

## Displacement takes many forms

- Gentrification
  - Social, physical, economic change
- Loss of home (not just housing)
  - Loss of access to necessary amenities such as groceries, doctors, playgrounds, schools, social networks, language, cultural sites, places of worship, local businesses
- Displacement can happen before development
- Safety – displacement results in residents feeling unsafe

# What do we mean by Anti-Displacement?

**An active process of centering and empowering communities to protect their home, access to resources, and sense of belonging from loss due to a Council investment or policy.**

# Key components of Anti-Displacement

## Components of success



# Anti-Displacement Framework

**Increase the ability for residents to keep their housing, amenities, health and/or sense of belonging in a neighborhood.**

# Anti-Displacement Framework Strategies

**Increase the ability for residents to keep their housing, amenities, health and/or sense of belonging in a neighborhood.**

Council investments go through an anti-displacement risk assessment

Prioritize projects that support community connection and anti-displacement in our grant programs

Provide best practices and resources through engagement and collaboration with overburdened communities

# Anti-Displacement Framework: Strategy #1

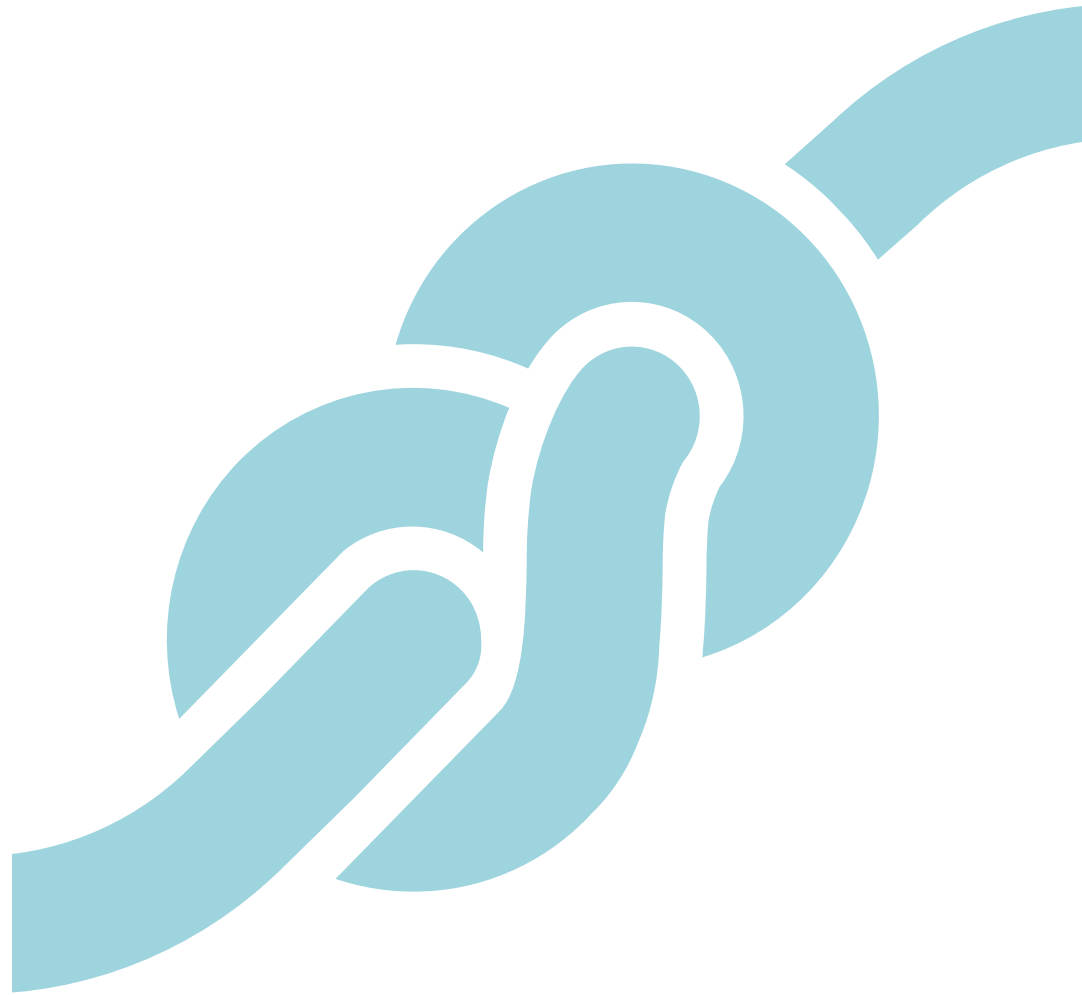


## Council investments go through an anti-displacement risk assessment

- Identify and be transparent about potential impacts in our investments
- Uses qualitative and quantitative data to provide context and experiences of residents in the area
- Address concerns not currently accounted for in Council processes



# Anti-Displacement Framework: Strategy #2



## Prioritize projects that support community connection and anti-displacement in our grant programs

- When possible, include prioritization in our investments for projects that increase community connection, minimize displacement, are justice-centered, or focus on place-based investments
- Work with each division to integrate into grant programs
- Continue to prioritize the development and preservation of deeply affordable housing across the region

# Anti-Displacement Framework: Strategy #3



## Provide best practices and resources through engagement and collaboration with overburdened communities

- Continue work with community partners to co-create best practices for mitigating displacement
- Build reparative and respectful relationships with community partners
- Share qualitative and quantitative data as well as technical assistance with local governments
- Collaborate and align best practices with partners around the region

# Discussion Questions



- What about this framework resonates with you?
- Where do you see this framework being applied across the Council?





Thank you

**Olivia Boerschinger**

Senior Housing Planner, Community Development

**Maia Guerrero-Combs**

Senior Housing Planner, Community Development

