



**IMAGINE<sup>20</sup><sub>50</sub>**

# 2050 Land Use Policy Plan Update

**Committee of the Whole**

**Angela R. Torres and Eric Wojchik**

April 17, 2024



# Agenda



## Today's Discussion

- Brief Recap
- Land Use Policy Engagement
- Land Use Policy Draft Content
- Timeline
- Next Steps

# Recap: Structure and Status

## Regional Values

Equity  
Leadership  
Accountability  
Stewardship

1

## Regional Vision

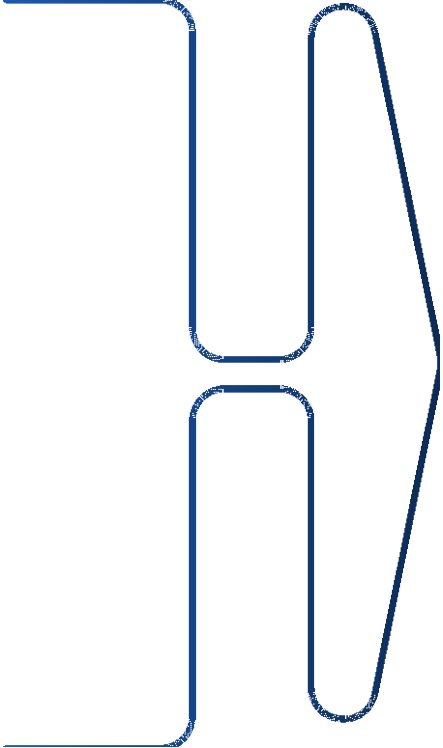
A prosperous, equitable, and resilient region with abundant opportunities for all to live, work, play, and thrive.

2

## Regional Goals

Our region is equitable and inclusive.  
Our communities are healthy and safe.  
Our region is dynamic and resilient.  
We lead on addressing climate change.  
We protect and restore natural systems.

3



## 4 Land Use Objectives

Eight draft land use objectives reviewed, January – February 2024.

## 5 Land Use Policies

Draft policies under review concurrent with actions, March – May 2024

## 6 Land Use Actions

Draft actions under review concurrent with policies, March – May 2024



**WEDNESDAY, MARCH 20**  
**RDG COMMUNITY COLLABORATION**  
**EXPO** from 3-4PM

**Young Leaders Collaboration**  
Youth engagement for the 2050 Regional Development Guide

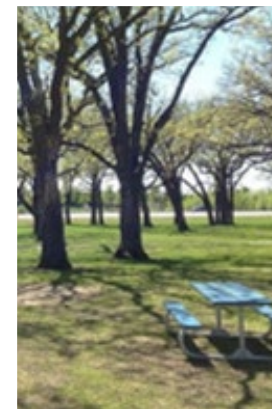
# Recap: Community Collaborations Policy Recommendations

## Need to be visible in regional policies including land use



### Connected multimodal transportation

- Affordable, reliable transportation system supports access to job opportunities.
- Multimodal transportation connects residents to community spaces and destinations in the urban core.
- Safety – in all transportation modes, in neighborhoods, in public spaces.



### Protect and restore natural systems

- Greenspace, parks, and natural systems across in urban, suburban, and rural environments.
- Outdoor community spaces and gardens that support community connection and mental health.
- Green spaces equitably distributed in communities and accessible to all types of residents.



### Housing that aligns with community needs

- Affordable housing for multigenerational households and large families across the region.
- Housing opportunities that align with employment options in the area.
- Culturally-responsive, multilingual housing resources



### Support economic wellbeing

- The cost-of-living forces residents to work multiple jobs and delay pursuing career goals and higher education.
- Work permits and discrimination are barriers that prevent immigrants from engaging productively in the economy.
- Communities should value immigrant contributions by promoting wellbeing for ALL community members.

# Recap: Young Leaders' Recommendations

## Need to be visible in regional policies including land use

### Affordability

- Linked to housing quality, cultural connection, safety and more
- Affordable housing choices result in lost opportunities for youth development
- Immigrants face unique challenges
- Region-wide, affects equity, public health, safety, well-being

### Transportation Infrastructure

- Pedestrian and cyclists hurt
- Multimodal transportation options needed in suburb/ suburban edge
- Youth particularly affected because they don't drive
- Affects equity, safety, public health

### Community Connection

- Need for social connection, belonging, being seen
- Small businesses vital
- Need "social infrastructure" to create connection
- Unique, important dimension of public health, wellbeing

### Parks Essential

- Highly valued for community connection, mental health
- Litter and pollution a concern, prevents access.[O&M funding]
- Valued activities include environmental education, family connection, socializing
- Related to all cross-cutting issues

### Land and Habitat Conservation

- Farmland protection highly valued, "once it's gone, it's gone."
- Habitat conservation in land use, Council construction work, transit stops
- Community gardens encouraged through land use policy
- Relates to all cross-cutting issues

### Water

- Water recreation key to quality of life, but inequitable
- Water quality and accessibility mentioned as key to "important places" in youth lives
- Support policies to regulate and monitor water quality
- Relates to all cross-cutting issues

# Recap: More Land Use Engagement Data

## Ongoing work

- Council members engage with local electeds
- Sector Representatives and technical staff work with local governments and established partners
- Regular standing meetings/groups
- Regular Council meetings, Council Committees, and CM Work Groups
- RDG Integration team and cross-divisional collaboration
- Policy Leads teams
- Park and trail visitor studies
- Professional organizations and conferences

## New Efforts with Existing Partners

- Regional Planning Advisory Group with Metro Cities
- Tribes and urban Indian organizations
- Center for Economic Inclusion and Greater MSP
- Governor's Council on Age-Friendly MN
- Local Planning Stories shared by local staff
- Center for Urban and Regional Affairs (CURA)
- Community Designations Focus Group
- Local Government Planners Focus Group
- Housing Choice Voucher Resident Advisory Board
- Topic-based Local Govt Engagement

## New Initiatives

- Young Leaders Collaborations
- Land Use Community Collaboration Groups
- American Indian Advisory Council
- Community Leaders Technical Advisory Group
- Focused Conversations with Community
- Rural/Ag Focus Groups with MN Dept of Ag
- Climate and Natural Resources Focus Group
- Climate and Natural Systems Technical Advisory Group
- Metro Conservation Network Planning Group
- Historical Cultural Survey

**Comparison:  
*Thrive MSP 2040*  
& *Imagine 2050***





# Comparison of Land Use Direction

	Growth Management	Transportation	Community Wellbeing & Safety	Natural Systems
Imagine 2050	Respect the relationship with land and water as a foundation for <b>regional growth</b> .	Maximize opportunities for growth in places well-served by <b>transit, bicycle, and pedestrian</b> infrastructure.	Establish vibrant, inclusive, connected, and safe <b>communities</b> for people to live in.	Ensure that development activities contribute to the fullest protection and restoration of <b>natural systems</b> on every level.
Thrive MSP 2040	<b>Align land use, development patterns, and infrastructure</b> to make the best use of public and private investment.	Sustain and improve a multi-modal <b>transportation</b> system to support regional growth, maintain regional economic competitiveness and provide choices and reliability for the system's users.	<i>No Thrive MSP 2040 equivalent</i>	Conserve, restore, and protect the region's <b>natural resources</b> to ensure availability, support public health, and maintain a high quality of life.  Conserve, restore, and protect the quality and quantity of the region's <b>water resources</b> to ensure ongoing availability, support public health, and maintain a high quality of life.

# Comparison of Land Use Direction

	Housing	Equitable Development	Climate Resilience	Economic Wellbeing
Imagine 2050	Ensure that in all types of communities, people find <b>housing opportunities</b> that align with their needs.	Remedy past and present <b>discriminatory land use practices</b> .	Strengthen the <b>climate resilience</b> of neighborhoods and communities through sustainable land use and development patterns.	Support the <b>economic wellbeing</b> of our region and its communities.
Thrive MSP 2040	Promote <b>housing options</b> to give people in all life stages and of all economic means viable choices for safe, stable, and affordable homes.	<i>No Thrive MSP 2040 equivalent.</i>	Promote sensitive land use and development patterns to achieve Minnesota's adopted greenhouse gas emissions goals at the regional scale, and to develop local resiliency to the impacts of <b>climate change</b> .	Foster connected land use options to provide <b>businesses and industries</b> with access to materials, markets, and talent.

# Land Use: Themes and Approaches; Objectives and Policies



# Land Use Objectives

**1**  Respect the relationship with land and water as a foundation for regional growth.

**2**  Maximize opportunities for growth in places well-served by transit, bicycle, and pedestrian infrastructure.

**3**  Establish vibrant, inclusive, connected and safe communities for people to live in.

**4**  Prioritize land use and development activities that protect, restore, and enhance natural systems at all scales.

**5**  Ensure that people in all types of communities find housing opportunities that align with their needs.

**6**  Remedy past and present discriminatory land use practices.

**7**  Implement land use and development practices that reduce greenhouse gas emissions, embed climate adaptation, and create resilient communities.

**8**  Support the economic wellbeing of our region and its communities.

# Land Use and Growth Management

## New Themes

- Indigenous perspectives visible and integrated
  - Regional land management guidelines
  - Native Partnership Council
- Equitable development approaches
- Focus on people, residents, and community benefits rather than public/private benefits

## New Approaches

- Identify forecasted growth and land supply by decade
- Density policies address trends of lower developed densities than minimum requirements
- Discourage solar developments on prime agricultural soils
- Support urban agricultural uses on vacant/underutilized land
- Growth considers water supply constraints

## Re-emerging or Evolving Approaches

- 20-year rolling land supply
- Minimum density increases, paired with opportunities for flexibility
- MUSA expansions based on defined criteria

# Land Use and Growth Management

## Same or Similar Approaches in Growth Management

- Maximize infrastructure investment
- Promote compact development
- Direct growth where infrastructure already exists
- Accommodate growth within the existing MUSA boundary
- Protect agricultural and rural areas from urbanization
- Encourage redevelopment, infill, and adaptive reuse

## Same or Similar Approaches in Density

- Density expectations are based on community designations
- Additional density expectations near transit station areas and for affordable housing
- Establish minimum density requirements by Community Designation
- Rural Residential Community Designation inconsistent

## Same or Similar Approaches in Natural Systems

- Direct growth away from sensitive ecosystems to protect natural systems
- Prevent groundwater contamination from development
- Adopt regional guidelines to protect priority waters and aquifers and restore water quality as part of development
- Local Water Supply Plans demonstrate availability of clean, safe drinking water where accommodating forecasted growth

# Objective 1: Respect the relationship with land and water as a foundation for regional growth.

1

Incorporate indigenous approaches, values, and practices in management of land and water sources.

2

Minimize the amount of land needed to accommodate regional growth and reduce the cost of infrastructure expansion and service improvements through orderly and economical growth.

3

Minimize urbanization of rural and agricultural areas and retain the ability to provide urban services based on regional system plans and long-term needs.

4

Maximize use of the existing built environment by encouraging redevelopment, infill, and adaptive reuse.

5

Direct growth away from sensitive ecosystems to prioritize protection of natural systems.

# Land Use and Transportation

## New Themes

- Support for planning processes that incorporate communities, prevent displacement, and weave multiple investments together to achieve multiple goals.
- Considering the beneficial effects of transit, bike, and pedestrian-friendly land uses on objectives in other policy areas, such as VMT reduction, water usage, and housing choice.

## New Approaches

- More specific language and support for pedestrian/bikeable/transit-friendly areas, aligning the full range of facilities and activities needed to build a supportive environment.
- Increased consideration for forward-looking alignment of land use effects on other regional responsibilities.
- Stronger language about supporting regional centers of economic activity.

## Same / Similar Approaches

- Partnership between the region and local jurisdictions
- Land use impacts on residents' ability to access jobs and services in the region.
- Aligning impacts between land use and transportation system
- Importance of land use and transportation systems in supporting regional economic performance.
- Multi-modal approach to linking land use and community needs.
- Land development density expectations that leverage transportation investments.



# Objective 2: Maximize opportunities for growth in places well-served by transit, bicycle, and pedestrian infrastructure.

1

Support community-led planning and anti-displacement efforts to ensure community cohesion during change resulting from public investments and market demand, at all scales of development.

2

Focus planned residential and commercial development near available and planned transit and transportation infrastructure.

3

Plan for and build an interconnected system of local streets, pedestrian, and bicycle facilities that prioritize the individual experience in planning for transit, bicycling, walking, and rolling.

4

Support regional centers of economic activity through land acquisition for public investment, pollution cleanup, preservation, accessibility improvements, and other planning support.

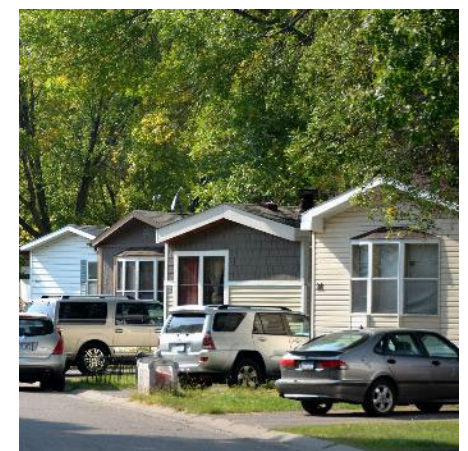
5

Prioritize the preservation, restoration, and enhancement of environmental and natural resources near transportation features and areas where transit is available.

# Land Use, Community Design, & Wellbeing

## Approach in land use objective, policies, and actions

- Center the voices of community
  - Listen and add equal weight to their feedback, even when it may not reflect your own perspective.
- Meet statutory obligations for *Imagine 2050* to “...recognize and encompass physical, social, or economic needs of the metropolitan area...” (Minn. Stat. § 473.145)
- Craft policy based on what it may take to achieve regional goals.
- Each objective should impact more than one regional goal.



# Objective 3: Establish vibrant, inclusive, connected, and safe communities for people to live in.

1

Prioritize planning practices that support mixed-use development, walkable neighborhoods, and easy access to public transportation.

2

Plan and maintain public spaces for community gatherings.

3

Prioritize and plan for creation and preservation of green public spaces in urban areas.

4

Center community engagement in the planning process to build community trust and ownership.

5

Protect historic and cultural assets.

6

Incorporate inclusive design principles that consider the needs of all community members including various cultural backgrounds, age groups, languages, and gender identities.

7

Integrate sustainable water management strategies into the design of vibrant public spaces.

# Land Use and Natural Systems

## New Themes

- Recognize the inherent value of nature.
- Create habitat connectivity
- Enhance public and private wildlife habitat and native plantings across land uses
- Assessment of existing natural resources, areas, and features
- Collaborate with Native and marginalized communities

## New Approaches

- Support nature as a climate adaptation solution
- Quantify the value of natural systems
- Inventory natural systems
- Protect, restore, & enhance connected habitat & natural systems corridors
- Focus on natural systems in areas of environmental justice concern
- Partner with State, Tribal, local, & watershed staff

## Same / Similar Approaches

- Embed green infrastructure into communities & public spaces
- Value trees for shade, ecological function, & contributions toward community climate resilience
- Sustainably manage water use and supply
- Protect surface water and groundwater resources

# Objective 4: Prioritize land use and development activities that protect, restore, and enhance natural systems at all scales.

1

Plan, build, and maintain informal public spaces that enhance natural systems features and public safety through community-centered design and stewardship.

2

Prioritize planning practices that support nature as a climate adaptation solution to build community resilience to potential climate impacts.

3

Measure the value of natural systems to assist communities in protection, restoration, and enhancement efforts.

4

Inventory natural systems within and between communities to assess areas for protection, restoration, and enhancement.

5

Prioritize compact and infill development to preserve high quality natural systems.

6

Protect, restore, and enhance connected habitat and natural systems corridors through development and infrastructure planning.

7

Protect, restore, and enhance natural systems in areas of environmental justice concern to build community resilience.

8

Partner with State, Tribal, local and watershed planners to build a shared understanding and identify strategies that address risks to public and ecosystem health.

9

Enhance public and private wildlife habitat and native plantings across land uses.

# Land Use and Housing

## New Themes

- Inclusive and diverse housing options
- Inclusive and equitable decision-making, engagement, and approach.
- Stronger emphasis on community connection and belonging, and consideration and integration of cultural norms and values in housing needs.
- Repurposing/redevelopment of existing infrastructure.

## New Approaches

- Collaborate and co-create with community in decision-making processes.
- Stronger acknowledgement of housing needs for diverse households
- Stronger, more coordinated approach to promote housing choice across the region to allow people to choose where they live.
- Recognize, reflect on, and remedy historical land use and housing discriminatory practices.

## Same / Similar Approaches

- Focus on promoting housing options for diverse needs.
- Proximity to job centers and economic opportunities.
- Partner with internal and external stakeholders to provide guidance and technical assistance to communities.
- Collaborate with internal and external housing stakeholders to analyze local markets and identify housing needs.
- Participation in regional programs and grant funding

# Objective 5: Ensure that people in all types of communities find housing opportunities that align with their needs.

1

Support the creation of diverse housing types which are integrated and connected within neighborhoods

2

Identify the specific housing needs of the region's growing aging population and people living with disabilities.

3

Prioritize a variety of housing types across all income levels close to local destinations including neighborhood centers, public parks, transit nodes where applicable, and community gathering spaces.

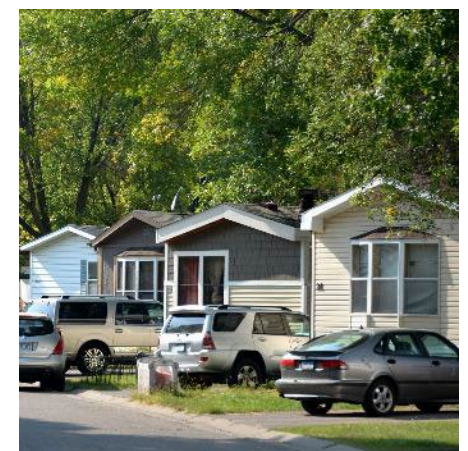
4

Repurpose existing vacant or underutilized buildings for affordable housing.

# Land Use and Equity

## Approach in land use objective, policies, and actions

- **Our Region is Equitable and Inclusive.** *Racial inequities and injustices experienced by historically marginalized communities have been eliminated; and every person feels welcome, included, and empowered.*
- Model how government at any scale can eliminate systems that perpetuate inequities.
- Acknowledge that equity is a persistent and pervasive development and land use issue.
- Center the voices of community
  - Listen and add equal weight to their feedback, even when it may not reflect your own perspective.
- Statutory obligations for *Imagine 2050* to “...recognize and encompass physical, social, or economic needs of the metropolitan area...” (Minn. Stat. § 473.145)
- Craft policy based on what it may take to achieve regional goals.
- Each objective should impact more than one regional goal.





# Objective 6: Remedy past and present discriminatory land use practices.

1

Take ownership of past harms, provide transparent communication, and hold governments accountable to plans and actions.

2

Prioritize engagement and collaborate with underrepresented populations to develop plans, policies, and programs responsive to and reflective of community needs.

3

Promote equitable distribution of public investments to benefit communities disproportionately harmed by past and present planning practices and to eliminate racial disparities and discrimination.

4

Center the native experience in decision-making and implement the actions included the Council's acknowledgment statement that all land in this region is Dakota land.

# Land Use and Climate

## New Themes

- Stronger, more coordinated approach to climate change
- Environmental justice, particularly for indigenous & marginalized communities
- Urban forest and stormwater management
- Collaborative, metrics-based climate approach

## New Approaches

- Establish climate action requirements
- Expand solar development
- Restore & expand tree canopy coverage
- Incentives-based program for climate-conscious land stewardship
- Co-develop climate solutions with Native & marginalized communities
- Supporting local food systems

## Same / Similar Approaches

- Mitigation & adaptation goals
- Compact development & redevelopment increases efficiency and lowers emissions
- Renovation/retrofitting of old buildings
- Implementation/expansion of green infrastructure
- Expand climate-related technical assistance

# Objective 7: Implement land use and development practices that reduce greenhouse gas emissions, embed climate adaptation, and create resilient communities.

1

Engage with local governments to establish fit-for-purpose climate requirements in line with State statute.

2

Support local governments in establishing goals to restore and maintain urban tree canopy.

3

Incentivize urban design and development that maximizes renewable energy readiness and enhances energy efficiency.

4

Encourage de-paving and replacement with natural landscaping to enhance climate adaptation and resilience.

5

Install solar panels in underutilized land areas, on industrial land, and accessory to complimentary uses.

6

Increase renewable energy systems deployment and energy storage in communities, especially for high energy-burdened households.

7

Support low impact design and integration of climate adaptation measures into development to prepare for current and projected climate impacts on our region.

8

Create an incentives-based program for climate-focused land stewardship and development.

9

Partner with Native and environmental justice communities to collaborate on climate solutions.

10

Deepen partnerships with State agencies and academic institutions to develop climate-related technical assistance and resources to serve the needs of local governments as well as historically underrepresented and marginalized populations.

11

Integrate local food systems and land use planning to build community resilience, access to healthy food, and food security.

12

Develop guidance and support for resilience hub concepts and implementation in community planning, with particular focus on extreme heat, air quality, and localized flooding hazards.

# Land Use and Economic Wellbeing

## New Themes

- Emphasis on racial equity by reducing and eliminating economic disparities and injustices in the region.
- Prioritization of workforce development strategies and resources.
- Greater emphasis on climate change and environmental sustainability

## New Approaches

- Place-based support to ensure economic wellbeing and vitality.
- Increasing equitable access to a diverse range of jobs and workforce development resources.
- Integration and consideration of culture and art to preserve cultural assets and support business districts in communities of color.

## Same / Similar Approaches

- Focus and integration of economic competitiveness strategies in the region.
- Collaboration and partnerships with agencies, stakeholders, and communities to promote economic wellbeing.
- Plan, partner, and provide research to understand regional economic needs.

# Objective 8: Support the economic wellbeing of our region and its communities.

1

Support efforts to keep the region affordable for residents, travelers, and businesses.

2

Support industries that directly contribute to addressing climate change and promoting environmental sustainability.

3

Value and promote economic growth and wellbeing of black, indigenous, people of color, immigrants, people of all ages, and all abilities in the region through equitable access to economic resources.

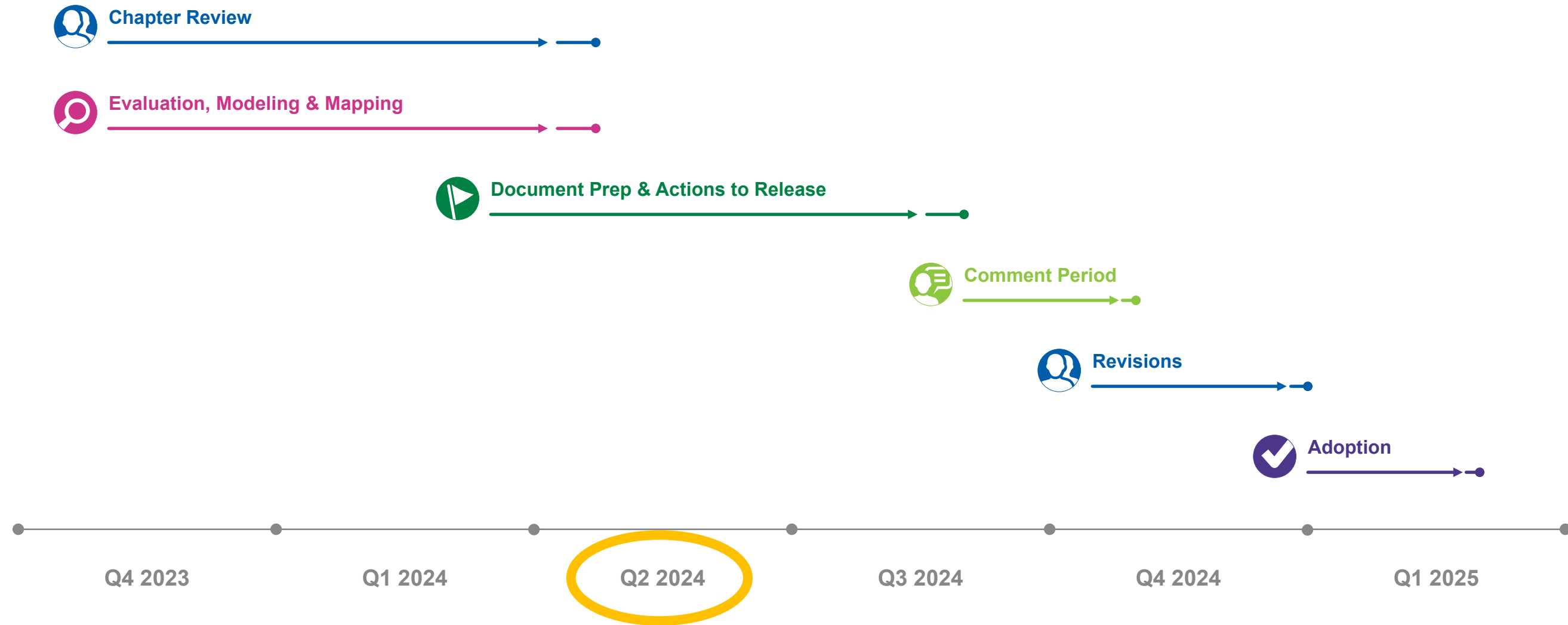
4

Advance economic equity and wellbeing in historically underserved communities by fostering growth of small and local businesses, entrepreneurship, and diverse industries.

# Wrapping Up...



# Timeline



# Next Steps

## Work for Q2 60% draft release; Mid-Q3 90% draft for official public comment period

Team writing workshops to integrate comments from:

- Council Committees and Work Groups:
  - Land Use Advisory Committee
  - Community Development Committee
  - Committee of the Whole
  - TPP Technical and Advisory Work Groups
  - RDG Councilmember Work Group
- Local Government Planners Focus Group
- Community Leaders Technical Advisory Group
- Regional Planning Advisory Group with Metro Cities
- American Indian Advisory Council
- Cross-Divisional Internal Teams
  - Equity Task Force
  - Environmental Justice Task Force
  - Integration Team and Policy Leads Team

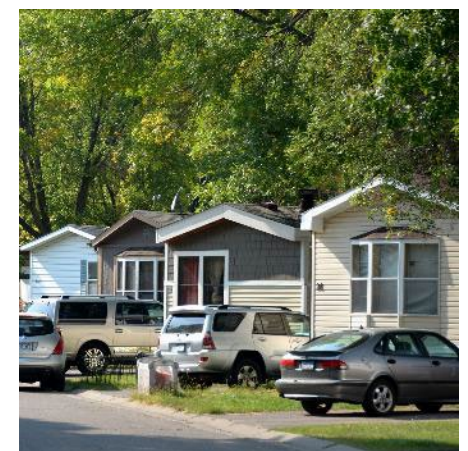
Review draft language against:

- Equity Framework
- Environmental Justice Framework
- Community-Centered Engagement Framework
- Anti-Displacement Framework

Continue engagement with local governments, community organizations, and Council committees and work groups

Balance revisions weighing feedback of underrepresented communities to ensure voices are heard equitably

Follow through on Council direction to be bold, address regional racial disparities, and center community voices in policy development







# Questions

**Angela R. Torres, AICP**

Senior Manager, Local Planning Assistance  
[angela.torres@metc.state.mn.us](mailto:angela.torres@metc.state.mn.us)  
(651) 602-1566

**Eric Wojchik**

Climate Policy and Planning Analyst  
[eric.wojchik@metc.state.mn.us](mailto:eric.wojchik@metc.state.mn.us)  
(651) 602-1330

