



Outcomes Measurement Program

New opportunities to describe the impact our regional development guide

Sarah Nelson and Krysten Ryba-Tures

June 2025



Today's information item



1 Sunset 2040 indicator projects & reflection

2 2050 program updates and future action

3 Measurement approaches & discussion

2040 indicator projects

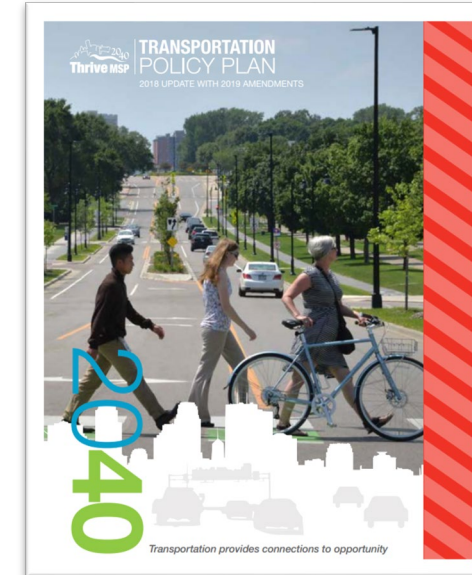
2040 Housing Policy Plan

- Adopted in 2015; published in 2017
- Developed by staff
- Organized by policy topic



Thrive MSP 2040

- Adopted in 2018; published in 2019
- Developed by Council Member workgroup
- Organized by five regional outcomes



2040 Transportation Policy Plan

- Both required federal and regional performance measures of transportation system

Recap: Lessons learned from 2040

Dialogues and data

The value of this work isn't (just) dashboards filled with data... it's the opportunities for dialogue about shared progress and challenges these data create that matters.

Frameworks help

- Intersecting topics
- Roles/partnership
- Broad/macro and local market conditions

Use a variety of data to describe outcomes to ensure Met Council and partner work is “seen” and contextualized.

Targets reflect goals

- Expression of goal or outcome “end states”
- Context for change (or lack thereof), for scale of effort needed
- **Not a focus yet**



DECLINE OR DECREASE IS ALIGNED WITH 2040 REGIONAL POLICY

- Levels of airborne particulate matter
- **Greenhouse gas emissions of Met Council's transit and environmental service operations**
- Average commute times (all workers)*
- Households experiencing moderate housing cost-burden (all households)*
- Average daily vehicle miles traveled (VMT) per capita

INCREASE OR GROWTH

- Levels of redevelopment (residential use)
- New affordable housing as share of new residential construction overall
- **Support for bicycle infrastructure via Met Council's Regional Solicitation program**
- Visits per capita to Regional Parks and Trails System
- **Size of the Regional Parks and Trails System**
- Commuters who travel less than 20 minutes to work (all commuting workers)*
- **Racial and ethnic diversity in Met Council hiring**

LITTLE TO NO CHANGE

- Average daily municipal water usage per capita
- **Water quality permit exceedances issued by Met Council**
- Protected acreage in Regionally Significant Ecological Areas (RSEAs)



DECLINE OR DECREASE IS ALIGNED WITH 2040 REGIONAL POLICY

- Impaired lakes and streams
- Racial/ethnic inequities of households experiencing housing cost-burden
- Households experiencing severe housing cost-burden
- Racial/ethnic inequities in average commute times
- Highway pavement in poor condition

INCREASE OR GROWTH

- Net gain of residents aged 25 to 34
- Share of needed new affordable housing that was built
- Racial/ethnic inequities of commuters who travel less than 20 minutes to work
- Jobs reachable by 30-min transit or pedestrian travel
- Workers commuting via walking, biking, transit, or rideshare
- **Racial and ethnic diversity in Met Council promotions**

LITTLE TO NO CHANGE

- None

**DID NOT CHARACTERIZE TREND DUE TO INDICATOR DESIGN**

- Share of transit-oriented development (TOD) that is affordable
- Share of the population in poverty living in areas of concentrated (and areas of concentrated affluence)
- Share of residential development in areas of concentrated (and areas of concentrated affluence)

The indicators listed above share attributes that make trends difficult to characterize: 1) areas included in the annual analysis change without discernible direction; and 2) the indicators summarize a share within a share, which may obfuscate underlying dynamics.

DID NOT CHARACTERIZE TREND DUE TO LIMITED DATA

- **Met Council's MCUB-eligible direct spend by race and ethnicity**

INDICATOR TRENDS

Met Council measures are **bolded**

*Indicator's disaggregation by race and ethnicity characterized separately.

**DECLINE OR DECREASE IS ALIGNED WITH 2040 REGIONAL POLICY**

- Households experiencing moderate housing cost-burden (all households)*

INCREASE OR GROWTH

- New affordable housing as share of new residential construction overall
- Homeownership rates (all households)*

LITTLE TO NO CHANGE

- None

**DECLINE OR DECREASE IS ALIGNED WITH 2040 REGIONAL POLICY**

- Racial/ethnic inequities of households experiencing housing cost-burden.
- Racial/ethnic inequities in homeownership rates

INCREASE OR GROWTH

- Share of needed new affordable housing that was built

LITTLE TO NO CHANGE

- None

INDICATOR TRENDS

Met Council measures are **bolded**

*Indicator's disaggregation by race and ethnicity characterized separately.



DID NOT CHARACTERIZE TRENDS DUE TO INDICATOR DESIGN

- Share of transit-oriented development (TOD) that is affordable (by level of Area Median Income)
- Share of the population in poverty living in areas of concentrated (and areas of concentrated affluence)
- Share of residential development in areas of concentrated (and areas of concentrated affluence)
- Share of households using Housing Choice Vouchers in areas of concentrated poverty (and areas of concentrated affluence)

The indicators listed above share attributes that make trends difficult to characterize: 1) the areas included in the analysis change annually and without discernible direction; and 2) the indicators summarize a share within a share, which may obfuscate underlying dynamics.

- **New housing units supported by Livable Communities Act (LCA) funding**
- **New affordable housing units supported by LCA funding**

The indicators listed above are based on competitive grant funding. Criteria for project selection has changed several over this timeframe; annual fluctuations in program fund availability and the number of projects and housing units supported with these funds are expected.

1 REFLECTION

Sunset 2040 indicator projects

1. At-a-glance, what questions do have about 2040 indicators? Data points you may want to know more about?
2. What do you find useful or valuable about measurement efforts? What do you consider strengths of this work?
3. What, if anything, is missing here? What do you consider limitations of this work?
4. Anything else you'd like to share? Questions for us?

Continuity with Imagine 2050



Stewardship

We value our region's resources. Our resources include our natural, economic, and financial resources as well as our infrastructure. We recognize that these resources may be vulnerable over time to changing conditions, including from climate change.

We must design our systems and allocate our resources in ways that can be sustained over time and support the needs of future generations.



Accountability

We value being effective in our work and achieving measurable outcomes. Our region is known for its research, initiatives, and collaborations. We must be open to criticism and clearly understand when we are not achieving results or have harmed communities.

We recognize that we can maximize our effectiveness by being in partnership with others. We will also be transparent and flexible so that we can change course when needed.



Leadership

We value those in our region who inspire and motivate others. We need broad and inclusive leadership to help confront the significant challenges we face around equity, climate change, safety, and other pressing issues.

To maximize the potential of our region and its communities, we turn to leadership that is diverse, collaborative, culturally competent, and innovative. We encourage this kind of leadership across all sectors including business, government, non-profit, and education.



Equity

We value the people and communities of our region. Our region is economically and culturally vibrant. We also recognize, however, the harm and disparities that injustices, including racism, have created.

We are dedicated to creating systems, policies, and programs that repair and heal past harm, foster an equitable future, and eliminate disparities. Communities that have been marginalized in the past will be at the center of this work in leadership roles.

Integrated regional planning and policy



IMAGINE²⁰₅₀

the region's plan for an equitable and resilient future

**Transportation
Policy Plan**

**Water Policy
Plan**

**Land Use
Policy**

**Housing
Policy Plan**

**Parks and
Trails Policy
Plan**

Scoping the 2050 program



What we can — and cannot do

- ✓ Facilitate measurement selection, development
 - ✓ Lead Imagine 2050 outcomes measurement amendment
 - ✓ Develop data infrastructure and documentation; coordinate updates
 - ✓ Create user-centered reporting tools
 - ✓ Annual stakeholder engagement
-
- X Evaluation of specific policy, program, or action's effectiveness
 - X Replace other legislative, strategic, or annual reporting
 - X Cannot mandate data collection (only encourage!)

“ *Continuous improvement is better than delayed perfection.*

- MARK TWAIN

2050 measurement program workplan

2024

- Review peer and local projects for inspiration and to flag duplication
- Brainstorm outcomes with policy teams
- Inventory existing data sources; what do we have?
- Assess current reporting; what do we already do?
- Host five regional goal workshops
- Stakeholder engagement

2025 (- May)

- Complete final updates for 2040 projects
- Compile ideas for further exploration and feedback
- Re-assess data availability
- Coordinate staff workgroup (measurement liaisons)
- **Share updates and obtain input on program direction**

2025 (June -)

- Refine ideas into feasible proposed measures (workgroup)
- Host stakeholder listening sessions (Summer)
- **Imagine 2050 amendment process (Fall; adoption EOY)**
- Start systems and reporting

2 QUESTIONS?

2050 program updates and future action

1. Questions about 2050 measurement program (scope, steps)?
2. Anything else you'd like to share? Questions for us?

2050 Measurement Language

Regional indicators

- Population-level (disaggregating where possible)
- Provide context—build shared understanding of past trends and current conditions
- “Big needles” that require collective action to move

Met Council measures

How is Met Council advancing 2050 goals and policies?

- Policies (“provide”)
- Grants and programs
- Processes
- Engagement and relationships (“partner”)

Regional measures

How are local partners advancing 2050 goals and policies?

- 2050 updates and other long-range plans
- Policies and strategies (developed/adopted)
- Programs, fiscal tools, funding
- Engagement and participation

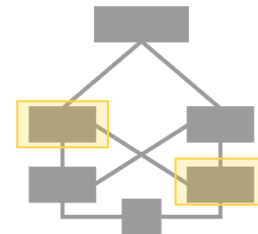
“slate”

LESS SPECIFIC MEASURES



OPTION A
Center Imagine 2050's five regional goals

- Most like Thrive MSP 2040 & other indicator projects in region
- Describe trends related to each goal through regional indicators
- Few Met Council or regional measures

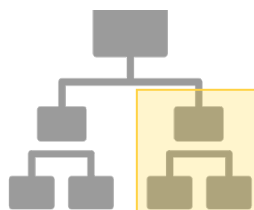


OPTION B
Integrate measures across shared topics in Imagine 2050

- Areas of integration across plans' objectives and policies and articulate these connections
- Describe trends through regional indicators but drill down where relevant to policy topic (service areas, community designations, special districts)
- Few Met Council or regional measures

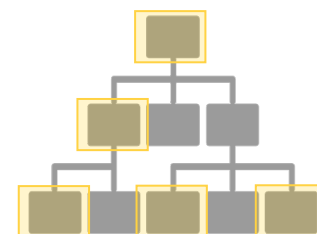
DISTINCT

INTEGRATION



OPTION C
Measures for each 2050 system or policy plan

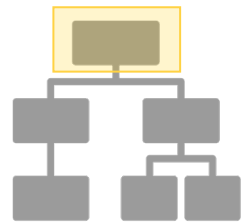
- One 2050 amendment but effectively separate measurement efforts, tailored to each 2050 plan
- More strongly tied to staff expertise and stakeholder priorities
- Combination of regional indicators, Met Council measures, and regional measures



OPTION D
Integrate measures by topics and roles; add region goals

- Option B plus consistent inclusion of both Met Council and regional measures
- Include relevant regional indicators (as in Option A)
- Phased: new measures may require data development or grounding studies to inform baselines or methods

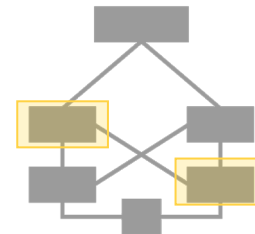
MORE SPECIFIC MEASURES



OPTION A
Center Imagine 2050's five regional goals

Regional trends

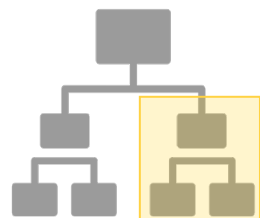
- Regional greenhouse gas emissions by sector
- Water quality
- Vehicle miles traveled (VMT)



OPTION B
Integrate measures across shared topics in Imagine 2050

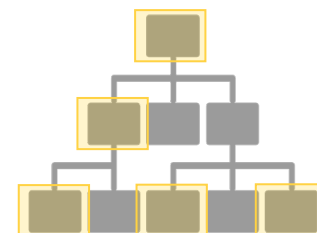
- Greenhouse gas emission trends by sector and by 2050 Community Designations
- Tree canopy coverage by land cover types and 2050 Community Designations
- Track connectivity between regional trails and regional bike transportation network

EXAMPLE: WE LEAD ON ADDRESSING CLIMATE CHANGE.



OPTION C
Measures for each 2050 system or policy plan

- Housing: climate-resilient development (%,\$) funded via LCA program (or included in criteria for funding)
- Water: miles of interceptor inspected annually
- Parks and Trails: carbon sequestration potential of restored natural systems or new acquisitions
- Land Use: land consumption per 1,000 new households



OPTION D
Integrate measures by topics and roles; add region goals

- Regional indicators: greenhouse gas emissions (ghg), water quality, vehicle miles traveled (VMT)
- Met Council measures: Climate Action Workplan and Environmental Justice Framework metrics
- Regional measures: ghg emission reduction strategies adopted by local governments via annual survey (like housing policy and production)

3 DISCUSSION

Measurement approaches

1. What opportunities do you see for this work? How is it distinct from other reporting and evaluation efforts?
2. What measures feel essential? Which, if any, of these approaches resonate with you?
3. Your preferences for updates as amendment content develops?
4. Early ideas for how to present/package this information?
5. Anything else you'd like to share? Questions for us?



Sarah Nelson

Senior Researcher,
Community Development Research
sarah.nelson@metc.state.mn.us

Krysten Ryba-Tures

Strategy & Product Design Manager,
Community Development Research
krysten.ryba-tures@metc.state.mn.us

