

July 21, 2014

# Local Planning Handbook Update

Community Development Committee



# Overview

Land Use

Transportation

Water Resources Management

Parks and Natural Resources

Housing

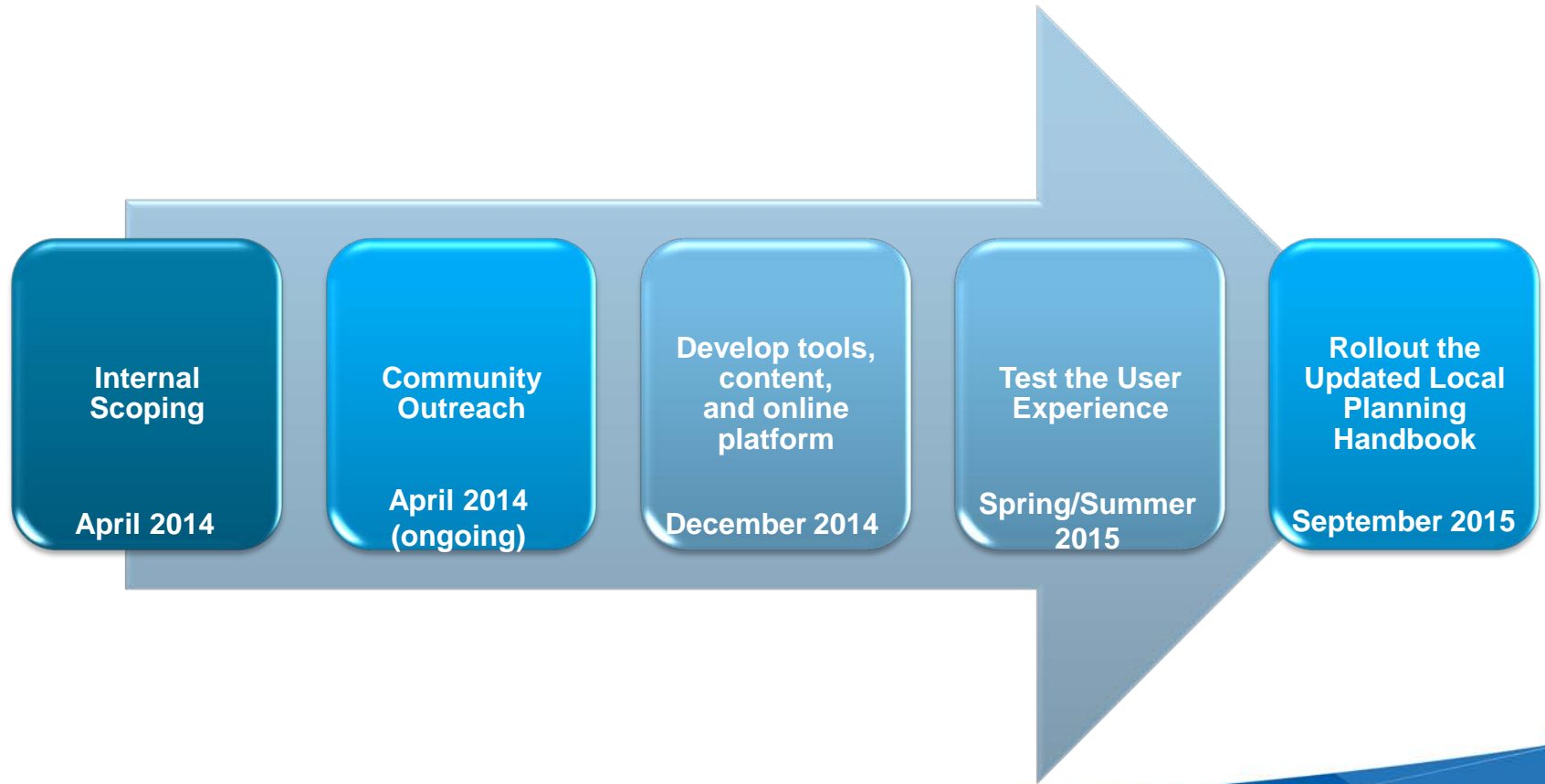
Climate Change

Economic Competitiveness

Special Resources

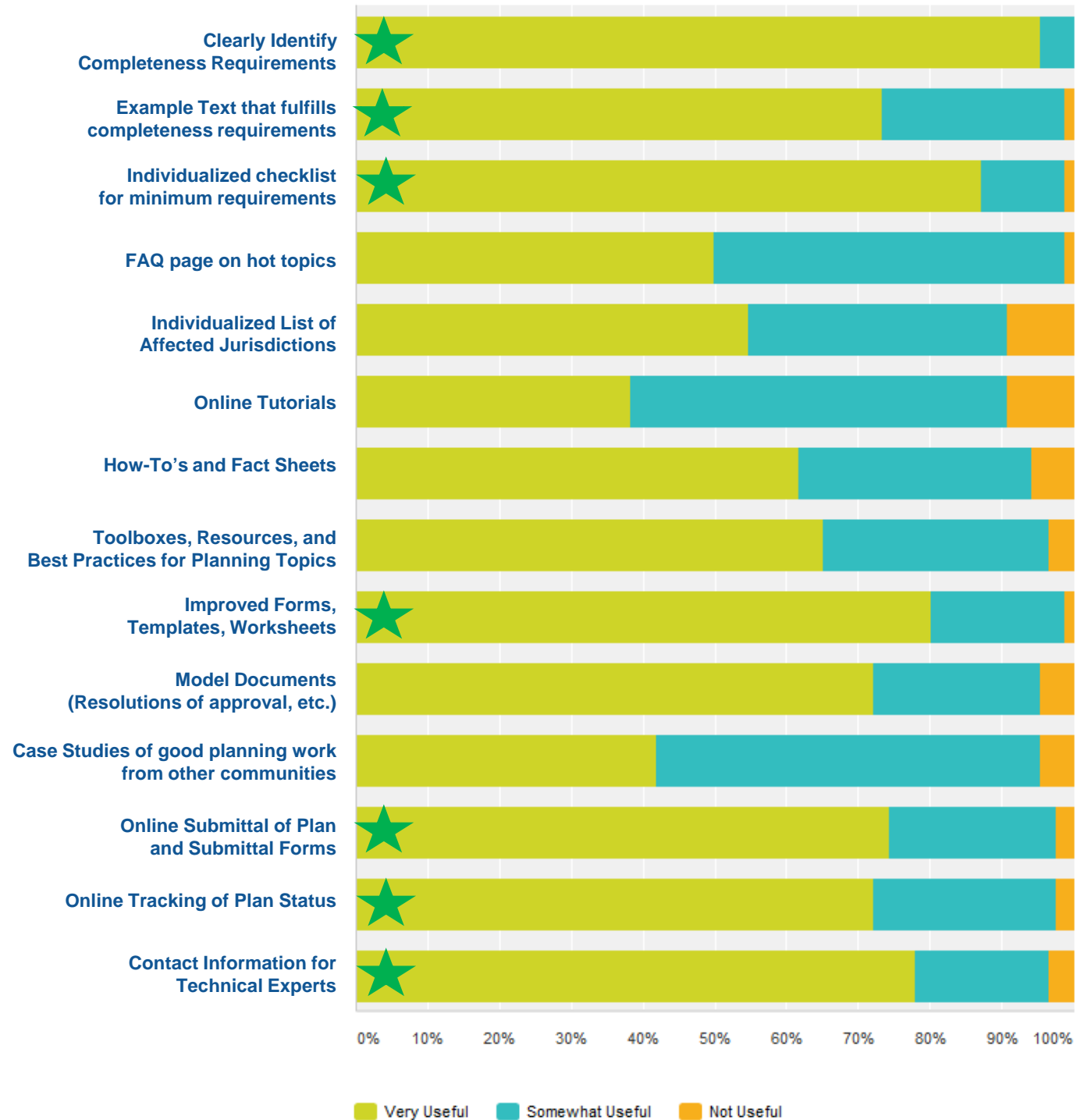
Implementation

# Process and Timeline



# Planners Survey Results

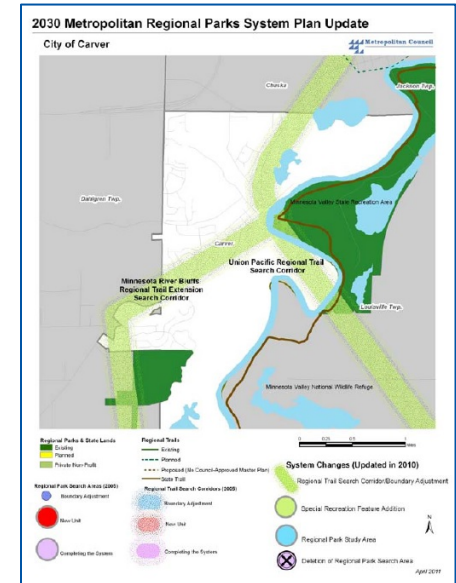
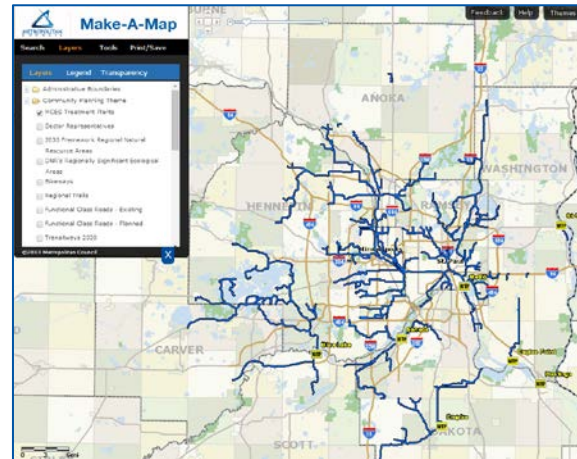
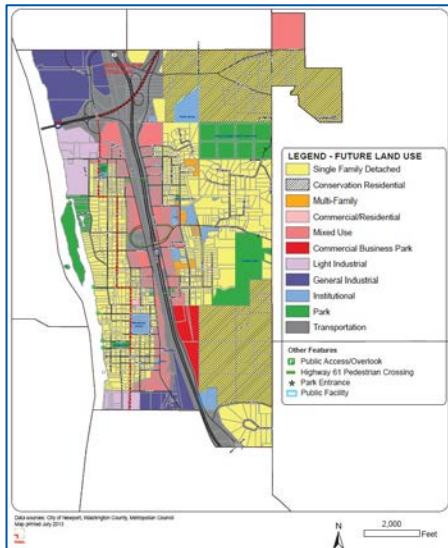
## Question on Tools and Resource Preferences





# Mapping

- Static Maps
- Interactive Mapping Tool
- Future Land Use Mapping Tool/ Services



# Resource Library

- Plan Examples
- How To's / Fact Sheets
- FAQs
- Toolboxes/Best Practices
- Forms/Worksheets
- Staff Contact Info
- Web Tutorials and Videos
- Community Highlights



# Contact Information

**Angela R. Torres, AICP**

[angela.torres@metc.state.mn.us](mailto:angela.torres@metc.state.mn.us)

Phone: 651.602.1566

**Freya Thamman**

[freya.thamman@metc.state.mn.us](mailto:freya.thamman@metc.state.mn.us)

Phone: 651.602.1750

**Raya Esmaeili**

[raya.esmaeili@metc.state.mn.us](mailto:raya.esmaeili@metc.state.mn.us)

Phone: 651.602.1616