

2014 Population Estimates

Community Development Committee

July 20, 2015



Estimates are not forecasts!

- The Council's forecasts look ahead to 2040
- Estimates look back in time to the previous year



Council's population estimates

- Conducted since 1971
- Mandated under Minnesota Statutes 473.24
- Timeline and process defined in statute
 - Preliminary estimates sent out mid-May
 - Comments / challenges addressed
 - Certified to State Demographer and Commissioner of Revenue

The importance of estimates

- Official state government population estimates used to allocate:
 - Local government aid
 - Local street aid
 - Tax-base sharing under Fiscal Disparities
- Some local governments have their own uses
- Help Council staff track growth and development

A housing-stock-based approach

- Base housing unit number: from the 2010 Census
- “How many housing units were there in 2014?”
 - Changes in housing stock by type
 - City-provided data on building permits / demolitions

A housing-stock-based approach

- Base housing unit number: from the 2010 Census
- “How many housing units were there in 2014?”
- “How many of those housing units were occupied?”
 - Occupancy rates by type
 - American Community Survey (U.S. Census Bureau)

A housing-stock-based approach

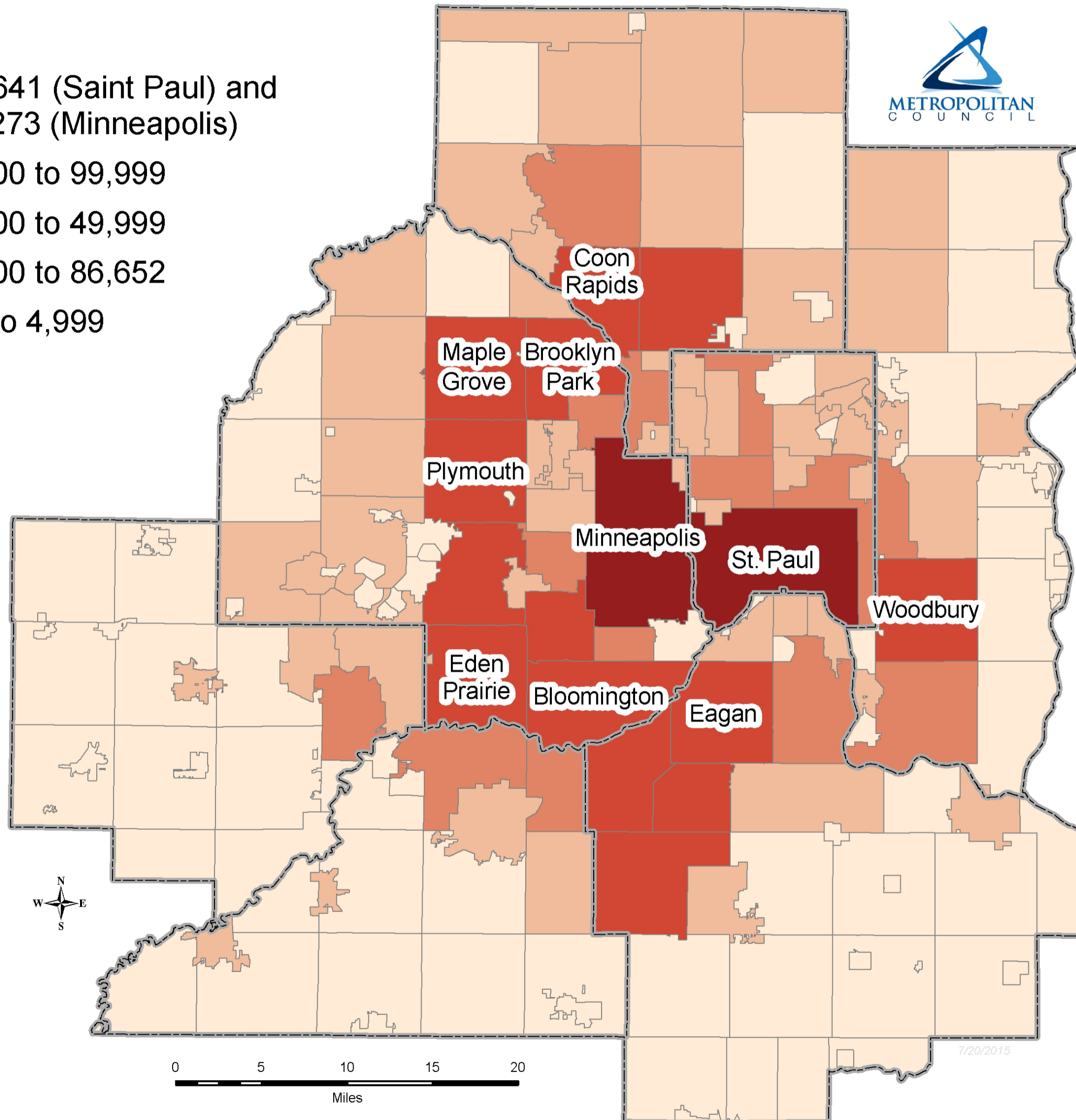
- Base housing unit number: from the 2010 Census
- “How many housing units were there in 2014?”
- “How many of those housing units were occupied?”
- “How many people lived in those units?”
 - Average household sizes by type
 - American Community Survey (U.S. Census Bureau)

2014 population estimates

- 2014 population: 2,979,343
 - Increase of 129,776 residents from 2010
 - 4.6% growth since 2010
- Components of growth:
 - Two-thirds “natural growth” (births > deaths)
 - One-third migration

Population in 2014

- 299,641 (Saint Paul) and 411,273 (Minneapolis)
- 50,000 to 99,999
- 25,000 to 49,999
- 50,000 to 86,652
- 121 to 4,999

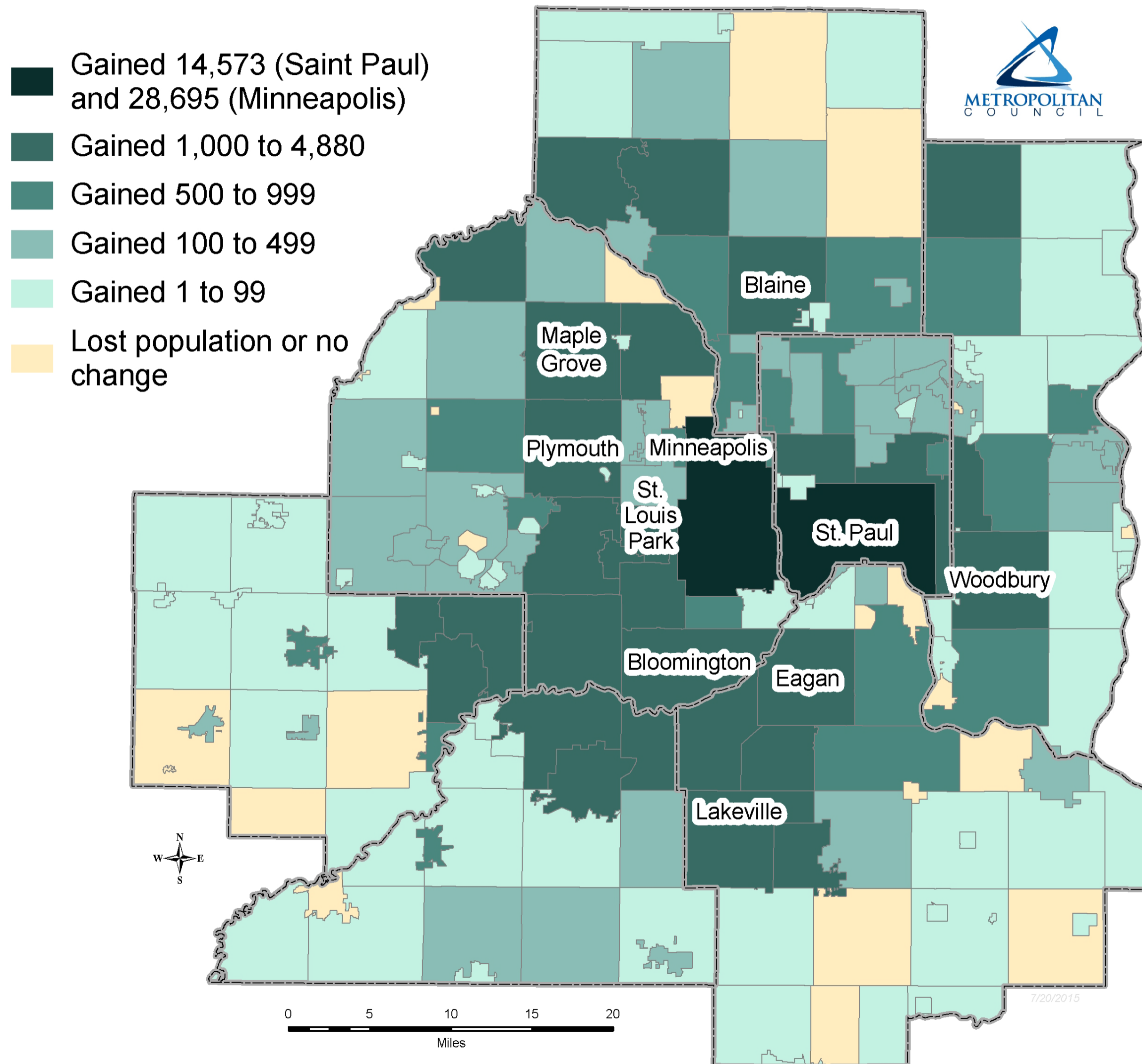


*Source:
Metropolitan
Council 2014
Population
Estimates*

*Note: The ten
most populous
cities in the region
are labeled.*



Population change, 2010 to 2014

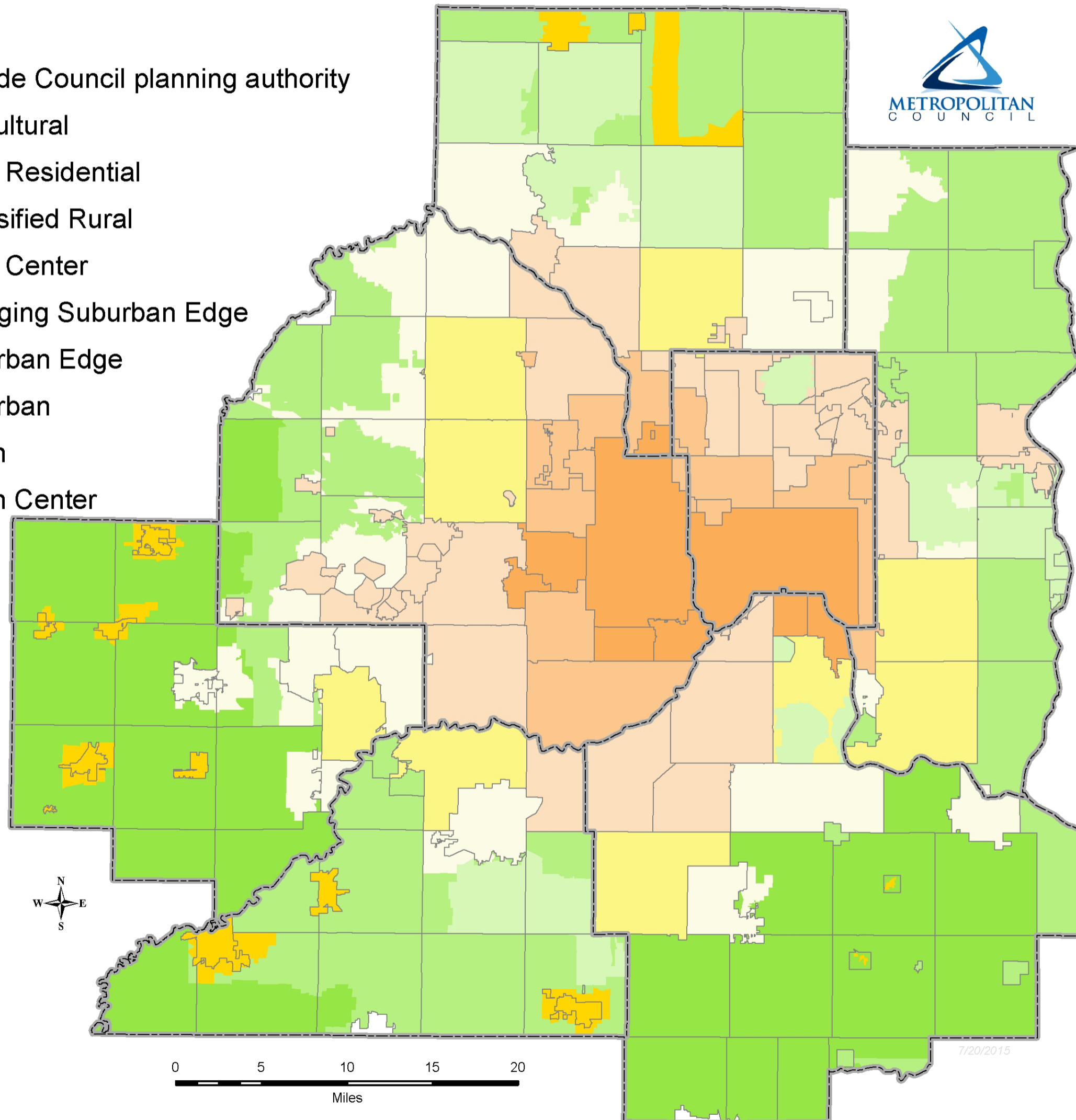


*Source:
Metropolitan
Council 2014
Population
Estimates*

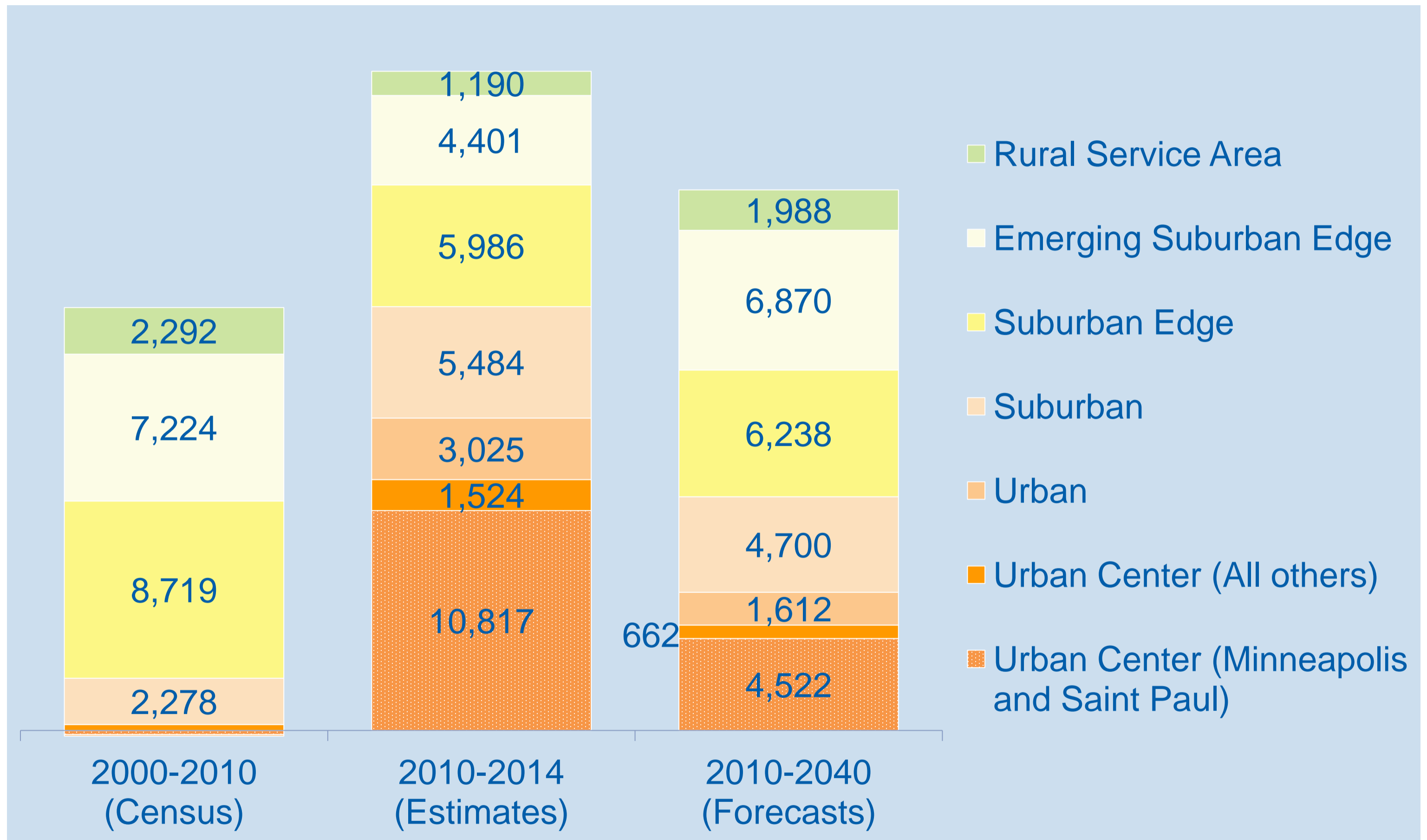
*Note: The ten
cities with the
most growth are
labeled.*

Community designations

- Outside Council planning authority
- Agricultural
- Rural Residential
- Diversified Rural
- Rural Center
- Emerging Suburban Edge
- Suburban Edge
- Suburban
- Urban
- Urban Center

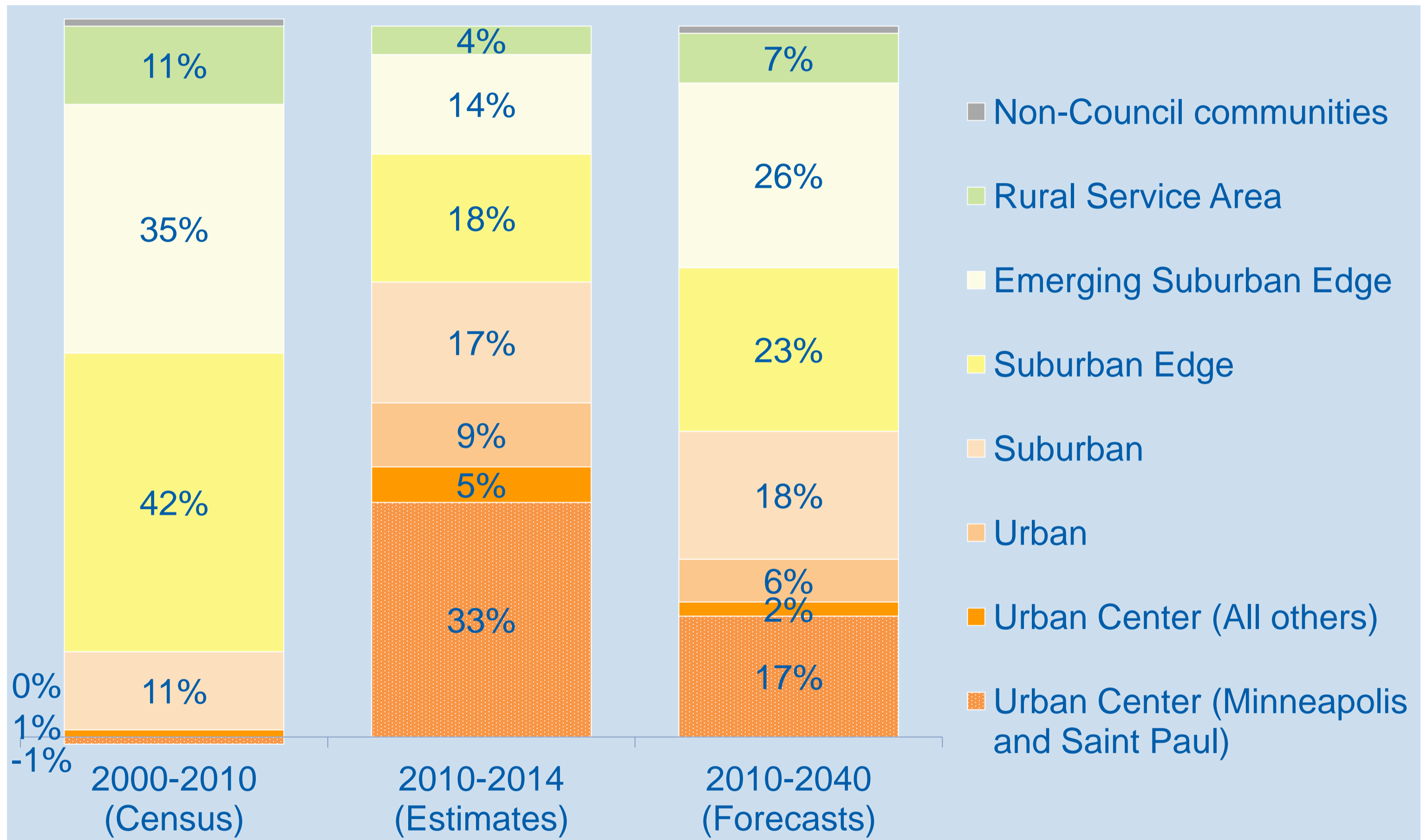


Average annual population growth



Source: Metropolitan Council
2014 Population Estimates

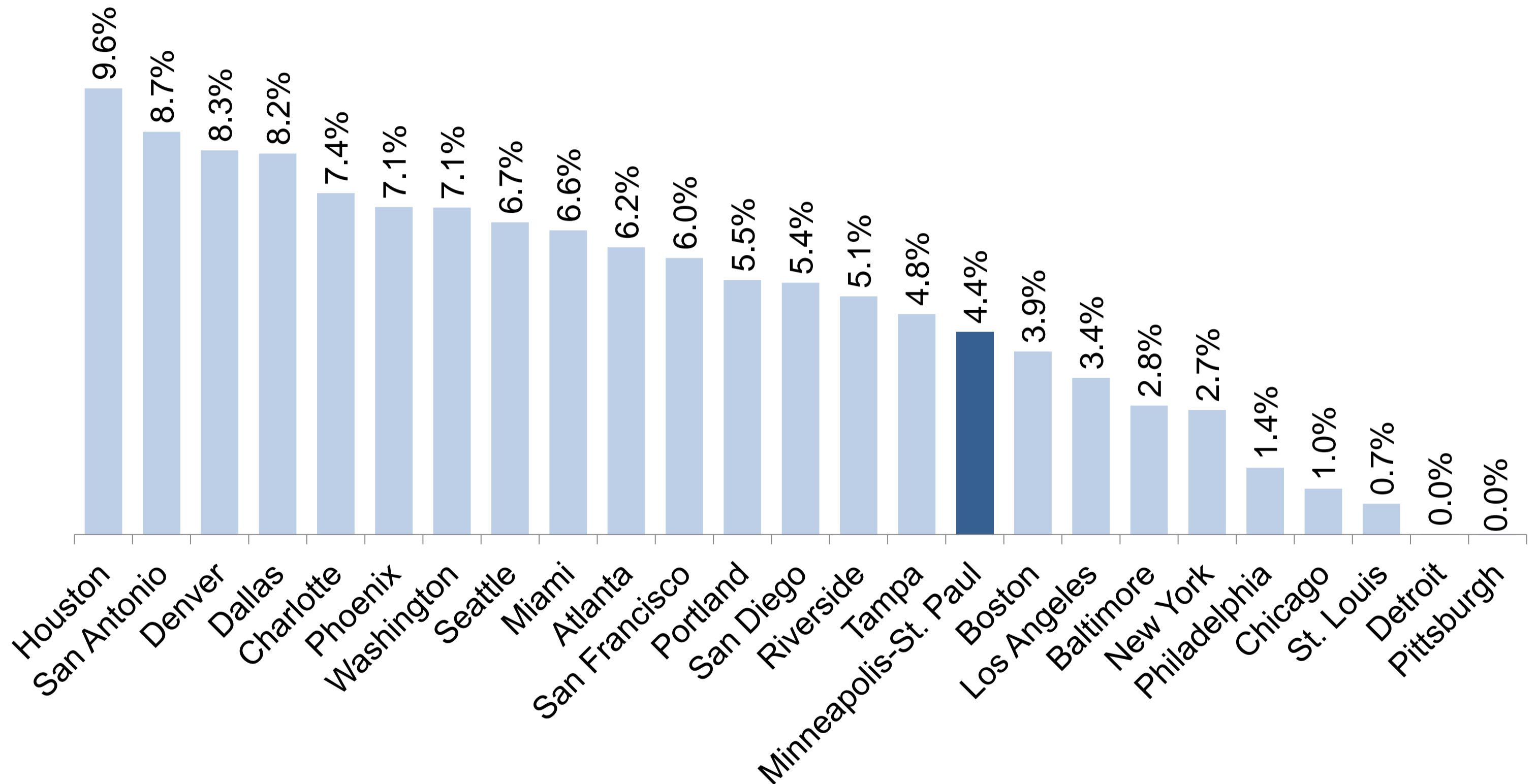
Growth by community designation



Source: Metropolitan Council
2014 Population Estimates

Our region in context

Population Growth in Large Metropolitan Areas, 2010 to 2014



Source: U.S. Census Bureau, 2014 Population Estimates

Population Estimates 2014

For more information, visit: www.metrocouncil.org/data

