

Joint Business Item: 2015-250

City of Landfall Village

Comprehensive Plan Update,

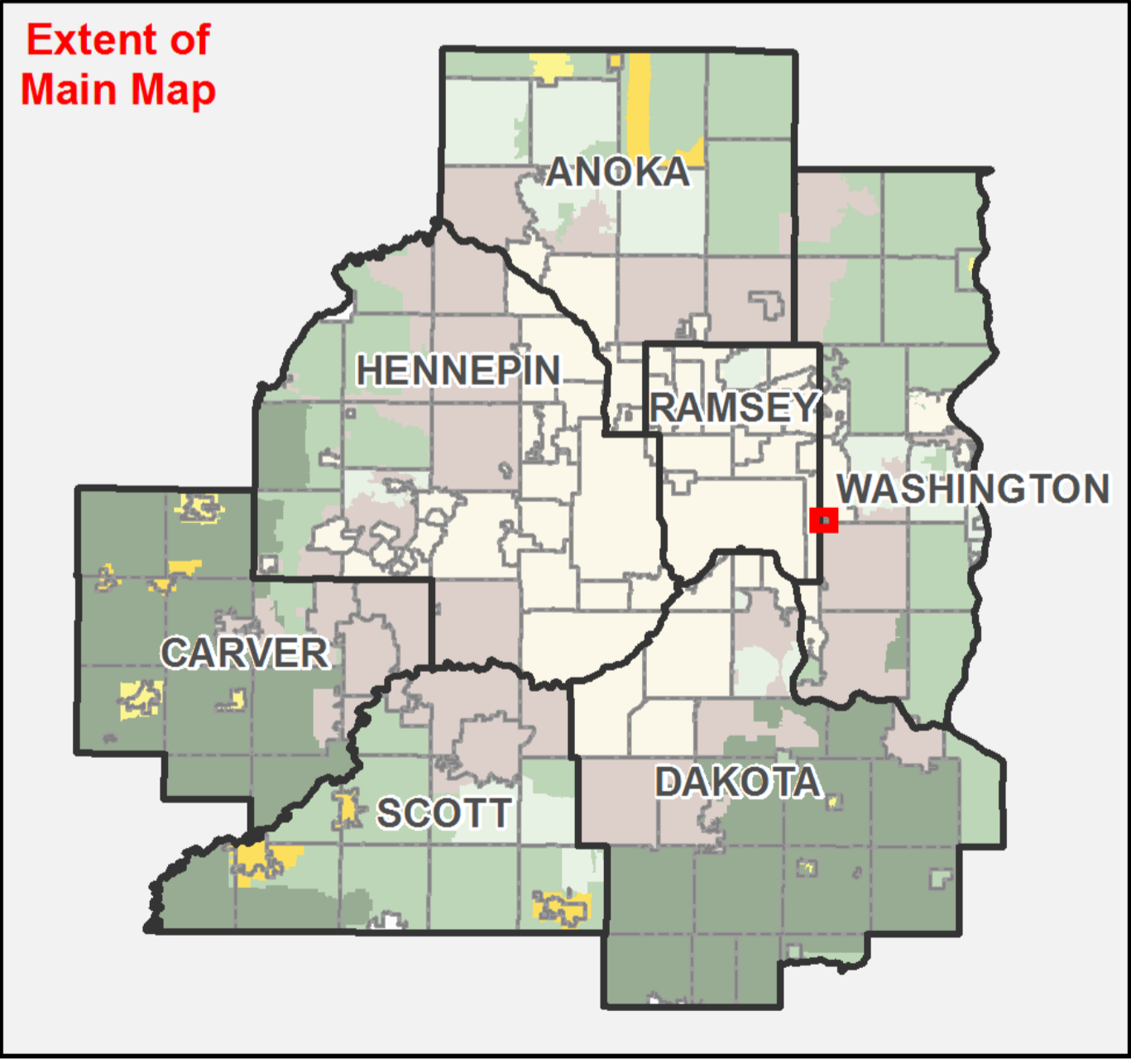
Review File No. 20781-1, and

Tier II Comprehensive Sewer Plan

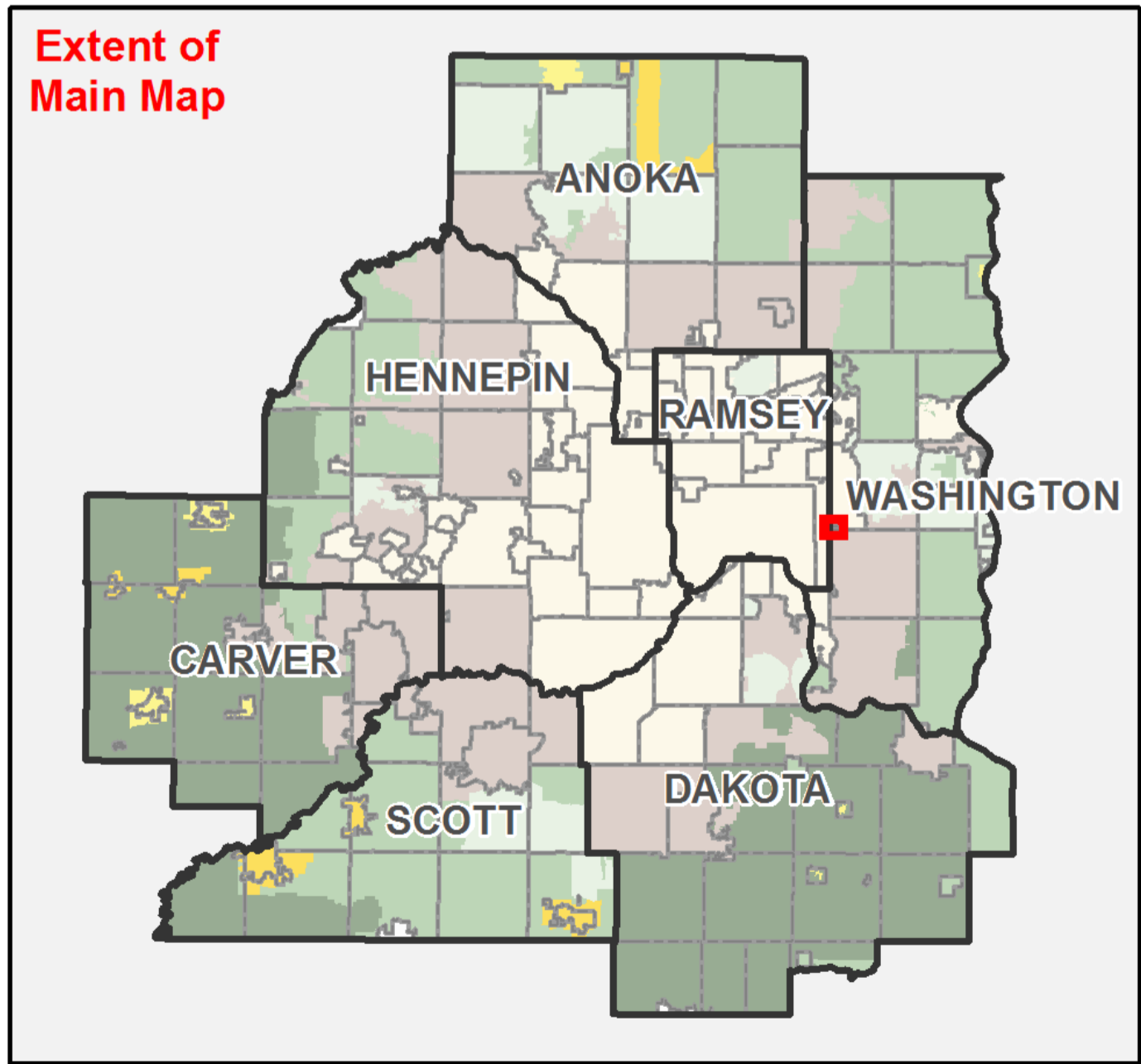
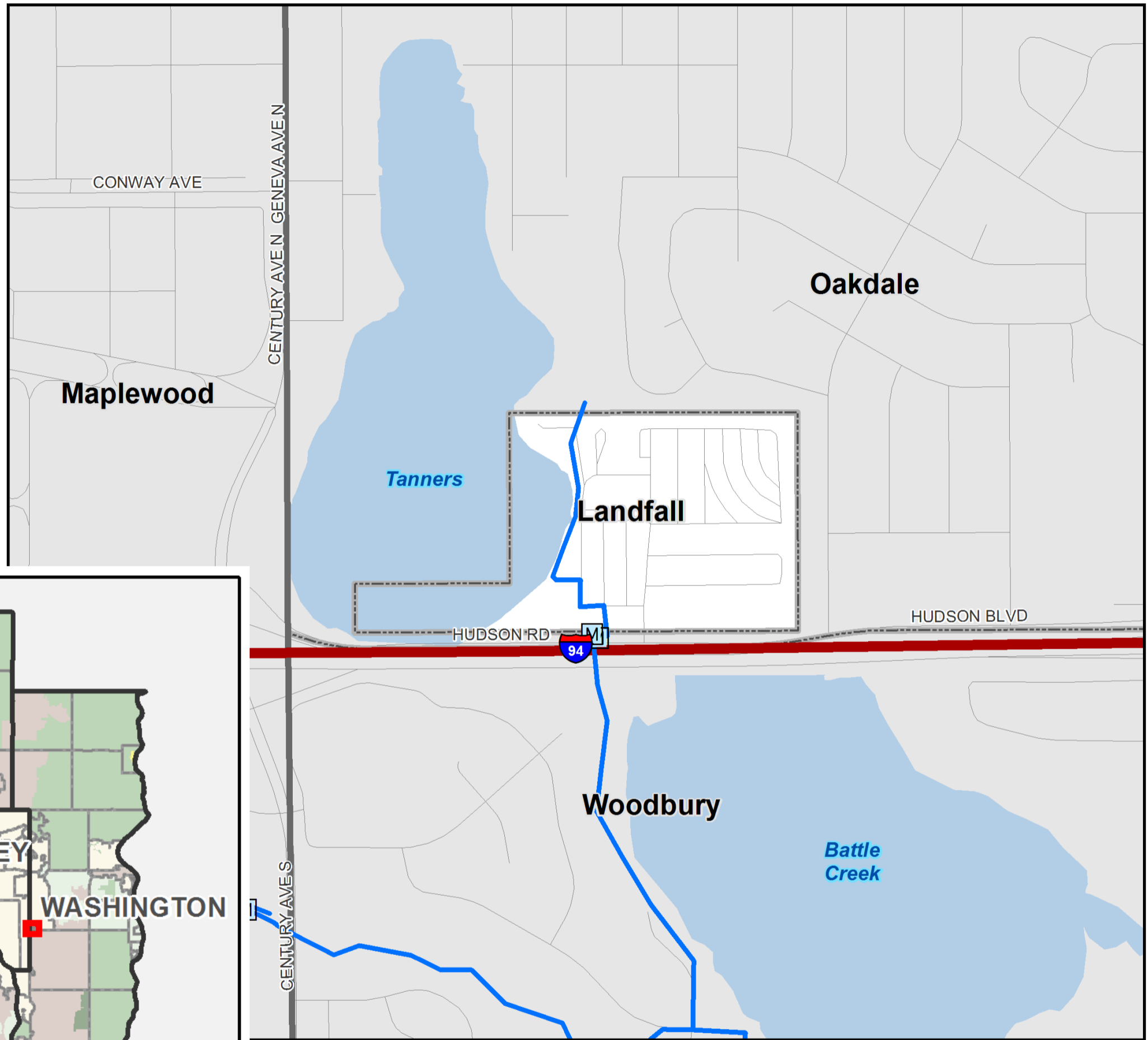
Michael Larson, Senior Planner, Local Planning Assistance

Community Development: October 19, 2015





Regional Development Framework Geographic Planning Areas



Regional Systems


City of Landfall


Existing and 2030 Future Land Use

Legend

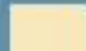
 Landfall City Limits


Roadway Functional Classification


 Principal Arterial

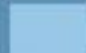
 Major Collector

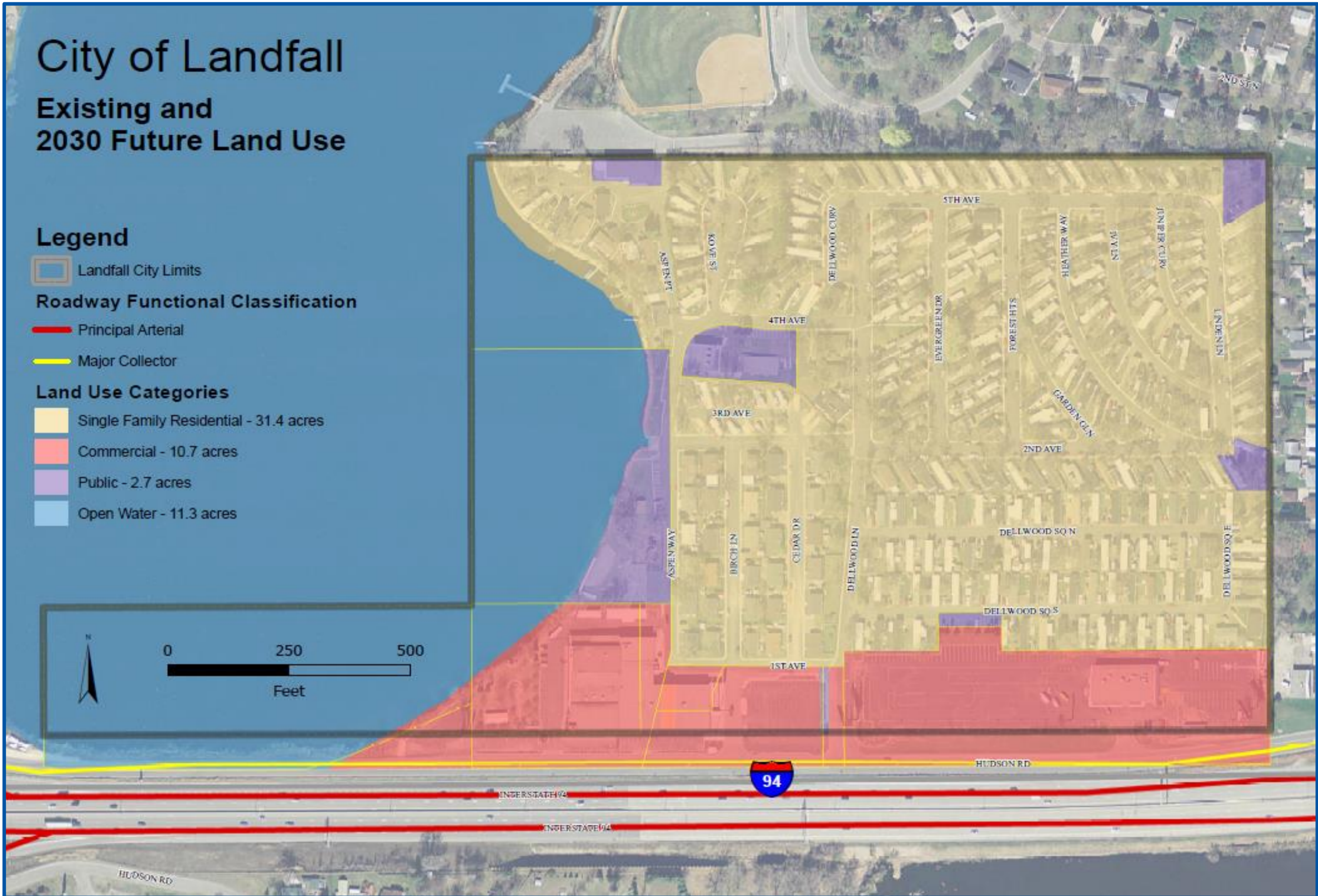
Land Use Categories

 Single Family Residential - 31.4 acres

 Commercial - 10.7 acres

 Public - 2.7 acres

 Open Water - 11.3 acres



System Conformance & Policy Consistency

- ✓ Conforms to Metropolitan system plans
- ✓ Consistent with Council policies
- ✓ Compatible with the plans of adjacent local governmental units and affected jurisdictions

Proposed Action

That the Metropolitan Council adopt the attached Advisory Comments and Review Record and take the following actions:

1. Authorize the City of Landfall Village to put its 2030 Comprehensive Plan Update into effect.
2. Advise the City to implement advisory comments in the Review Record for Forecasts and Transit.