



# Twin Cities

---

# Community Land Bank

Building Neighborhoods  
Strengthening Communities

**Presentation to the Metropolitan Council  
Community Development Committee  
September 21, 2015  
By Sandy Oakes**

# Activities and Impact



The Land Bank captures real estate opportunities to foster economic equity in alignment with community goals for people with low to moderate incomes, through Strategic Acquisition and Community Lending, in the Twin Cities 7-county metropolitan region of Minnesota.



# Activities and Impact



## Single Family

- Utilized more than \$105.8 million to purchase over 1200 properties totaling over 1695 units
- 468 loans totaling 65.2 million

## Large Site

- Utilized more than \$7.2 million for 12 Large-site Strategic Acquisitions
- Resold 6
- 437 total projected units



# Old Home Site, St. Paul - Before



**Project:** Western U Plaza

**Location:** Green Line, Western Ave. Station Area

**Sponsor/Developer:** Aurora/St. Anthony Neighborhood Development Corporation, Sand Companies, Inc.

**Proposed Use:** Mixed Use including 57 units of housing



# Old Home Site, St. Paul - After



Photo Credit: Sand Companies, Inc.



# J-HAP Site, Golden Valley - Before



**Project:** Cornerstone Creek

**Location:** Golden Valley

**Sponsor/Developer:** Jewish Housing and Programming and Community Housing Development Corporation

**Proposed Use:** 45 units of housing



# J-HAP Site, Golden Valley - After



Photo Credit: UrbanWorks Architecture



# House of Charity Expansion Site, Minneapolis - Before



**Project:** House of Charity Expansion

**Location:** Green Line, Downtown East Station Area

**Sponsor/Developer:** House of Charity and Community Housing Development

**Proposed Use:** Expansion of services and 75 units of housing





# House of Charity Expansion Site, Minneapolis - After



Photo Credit: MSR Architecture



# Beacon Interfaith Housing Site, Edina - Before



**Project:** 66 West Apartments

**Location:** Edina, across from Southdale Transit Center

**Sponsor/Developer:** Beacon Interfaith Housing

**Proposed Use:** 39 units of housing



# Beacon Interfaith Housing Site, Edina - After

## 66 West Apartments

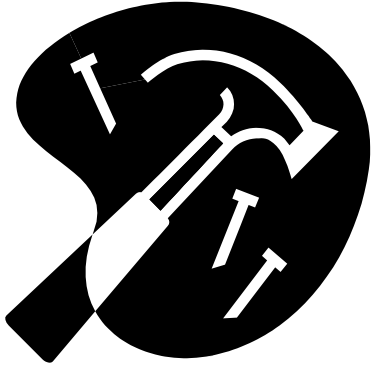
---



Photo Credit: UrbanWorks Architecture



# Additional Projects



Oxford Green, Hopkins, Blue Line Blake Station Area

University and Vandalia, St. Paul, Green Line Raymond Station Area

Payne Avenue Acquisition, purchased on behalf of City of St. Paul

MPLS Public Schools Adult Basic Education site, Blue Line E. Lake Street Station Area



# Summary

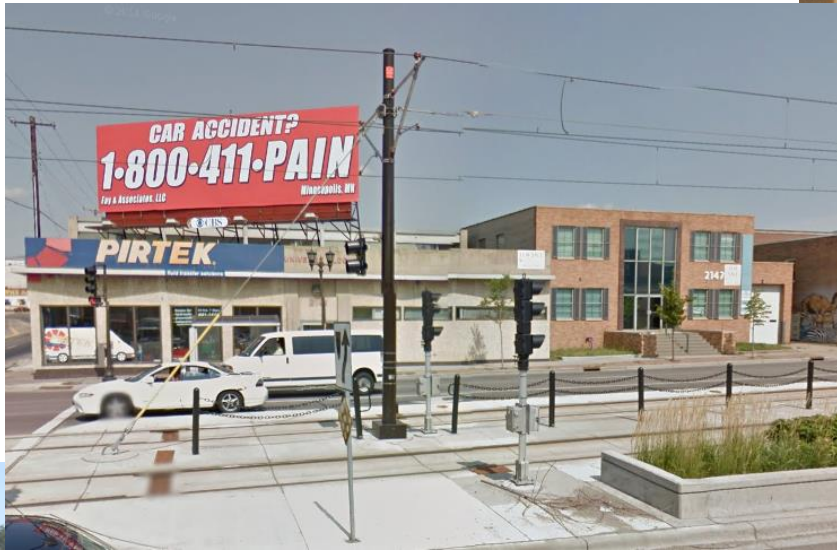


Photo Credit: Larry Vaughn

September 21, 2015

Land Bank Presentation to the Metropolitan Council  
Community Development Committee



# Contact



Contact me directly:

Sandy Oakes

[Sandra.Oakes@tcclandbank.org](mailto:Sandra.Oakes@tcclandbank.org)

612.238.8213

Visit our website: [www.tcclandbank.org](http://www.tcclandbank.org)

Main: 612-238-8210

