

# 2015 Population Estimates

Community Development Committee

July 18, 2016





# Estimates are not forecasts!

- The Council's forecasts look ahead to 2040
- Estimates look back in time to the previous year





# Council's population estimates

- Conducted since 1971
- Mandated under Minnesota Statutes 473.24
- Timeline and process defined in statute
  - Preliminary estimates sent out mid-May
  - Comments / challenges addressed
  - Certified to State Demographer and Commissioner of Revenue

# The importance of estimates

- Official state government population estimates used to allocate:
  - Local government aid
  - Local street aid
  - Tax-base sharing under Fiscal Disparities
- Some local governments have their own uses
- Help Council staff track growth and development

# A housing-stock-based approach

- Base housing unit number: from the 2010 Census
- “How many housing units were there in 2015?”
  - Changes in housing stock by type
  - City-provided data on building permits / demolitions

# A housing-stock-based approach

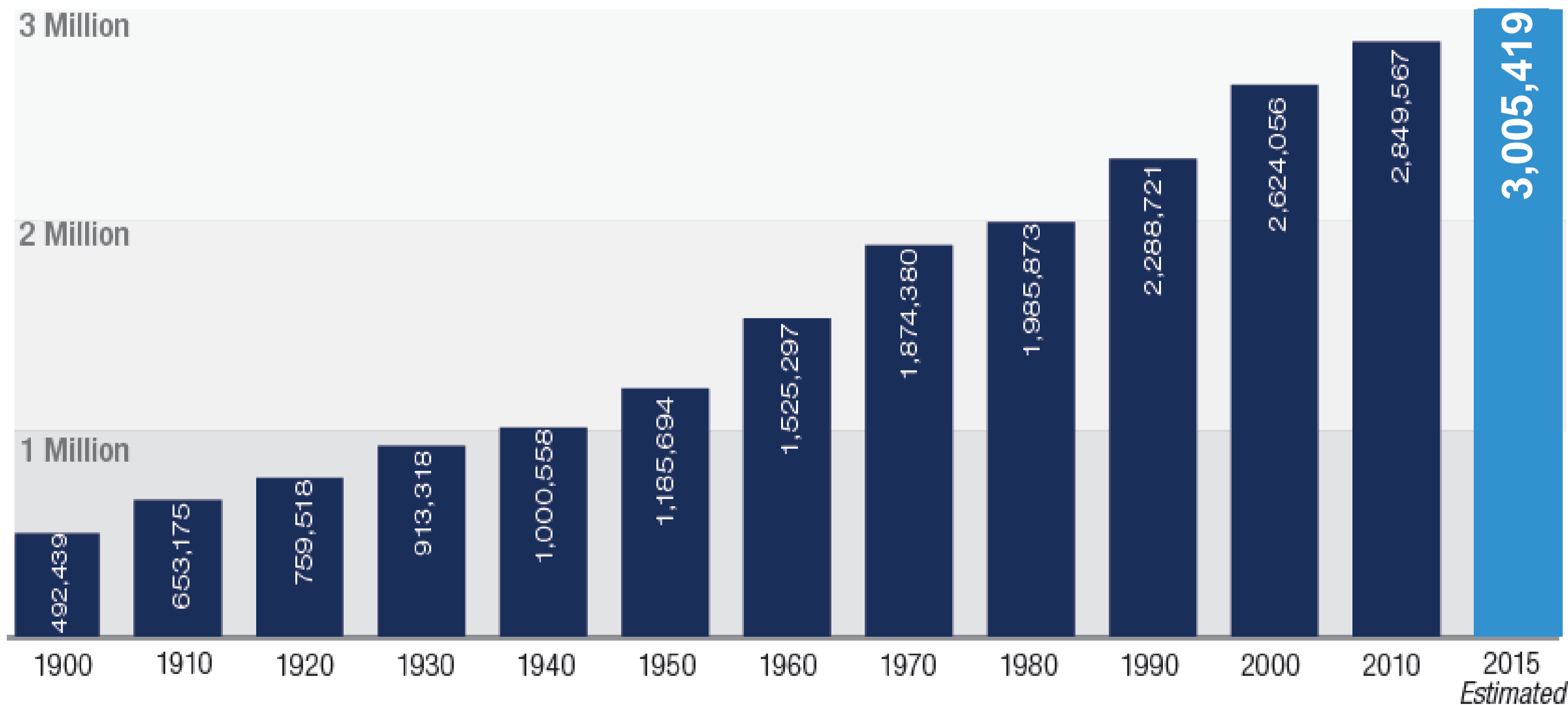
- Base housing unit number: from the 2010 Census
- “How many housing units were there in 2015?”
- “How many of those housing units were occupied?”
  - Occupancy rates by type
  - American Community Survey (U.S. Census Bureau)
  - U.S. Postal Service data

# A housing-stock-based approach

- Base housing unit number: from the 2010 Census
- “How many housing units were there in 2015?”
- “How many of those housing units were occupied?”
- “How many people lived in those units?”
  - Average household sizes by type
  - American Community Survey (U.S. Census Bureau)



# Three million residents!



Source: U.S. Census Bureau, Decennial Census, 1900-2010;  
Metropolitan Council 2015 Population Estimates



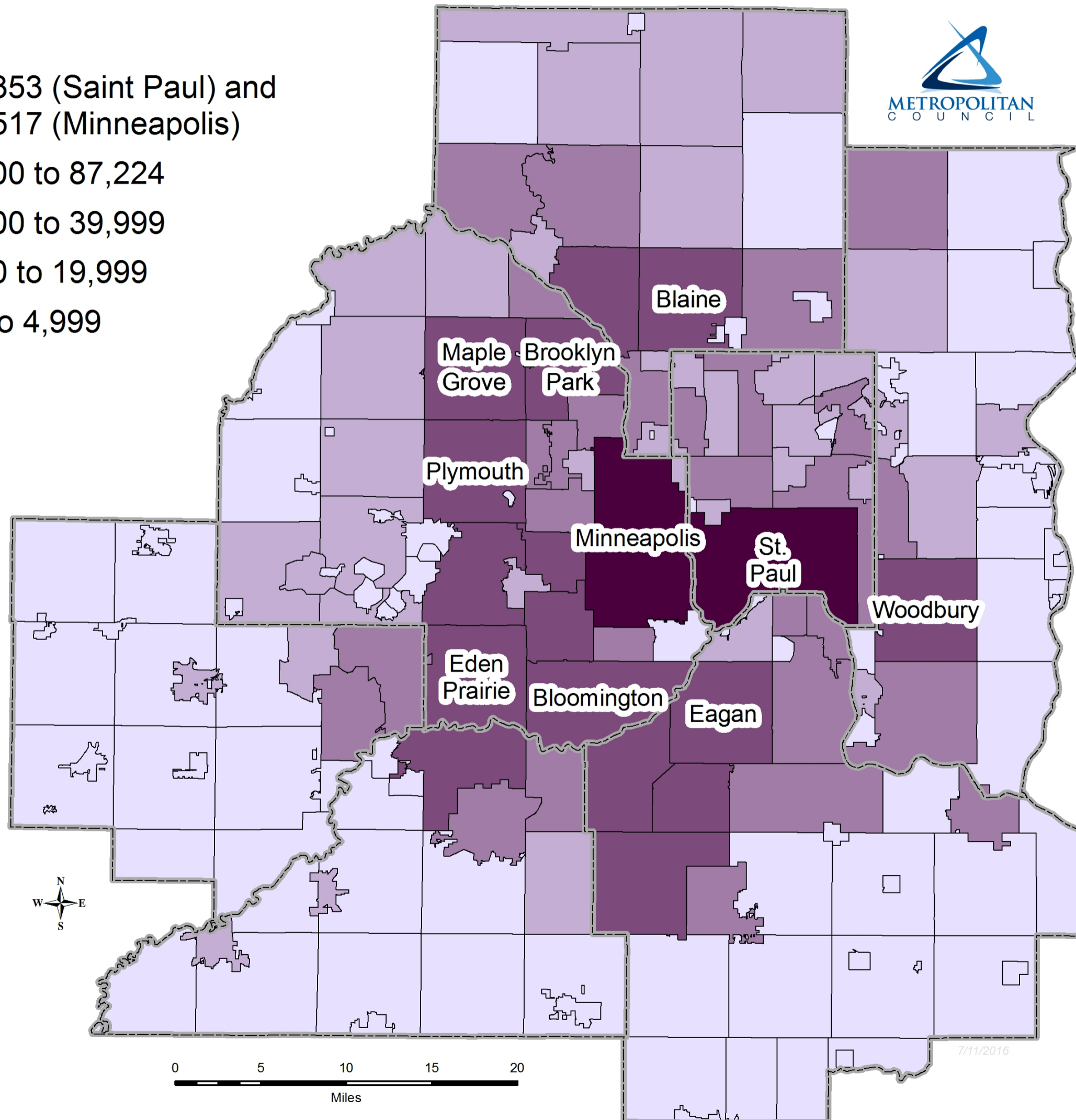


# 2015 population estimates

- 2015 population: 3,005,419
  - Increase of 155,852 residents from 2010
  - 5.5% growth since 2010
- Components of growth:
  - Two-thirds “natural growth” (births > deaths)
  - One-third migration

# Population in 2015

- 300,353 (Saint Paul) and 412,517 (Minneapolis)
- 40,000 to 87,224
- 20,000 to 39,999
- 5,000 to 19,999
- 110 to 4,999

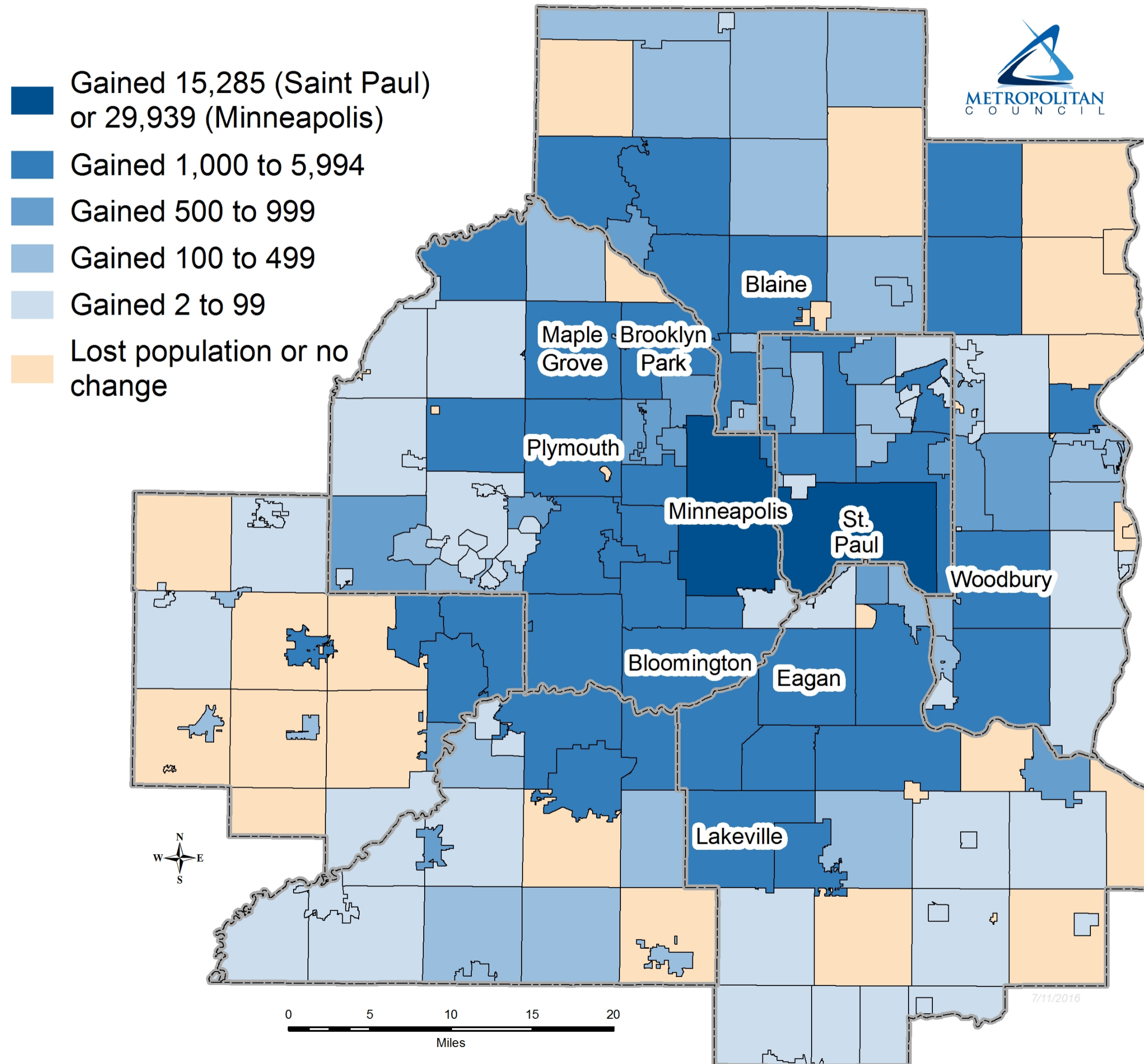


*Source:  
Metropolitan  
Council 2015  
Population  
Estimates*

*Note: The ten  
most populous  
cities in the region  
are labeled.*



# Population change, 2010 to 2015



*Source:  
Metropolitan  
Council 2015  
Population  
Estimates*

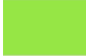
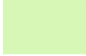



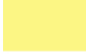



*Note: The ten  
cities with the  
most growth are  
labeled.*

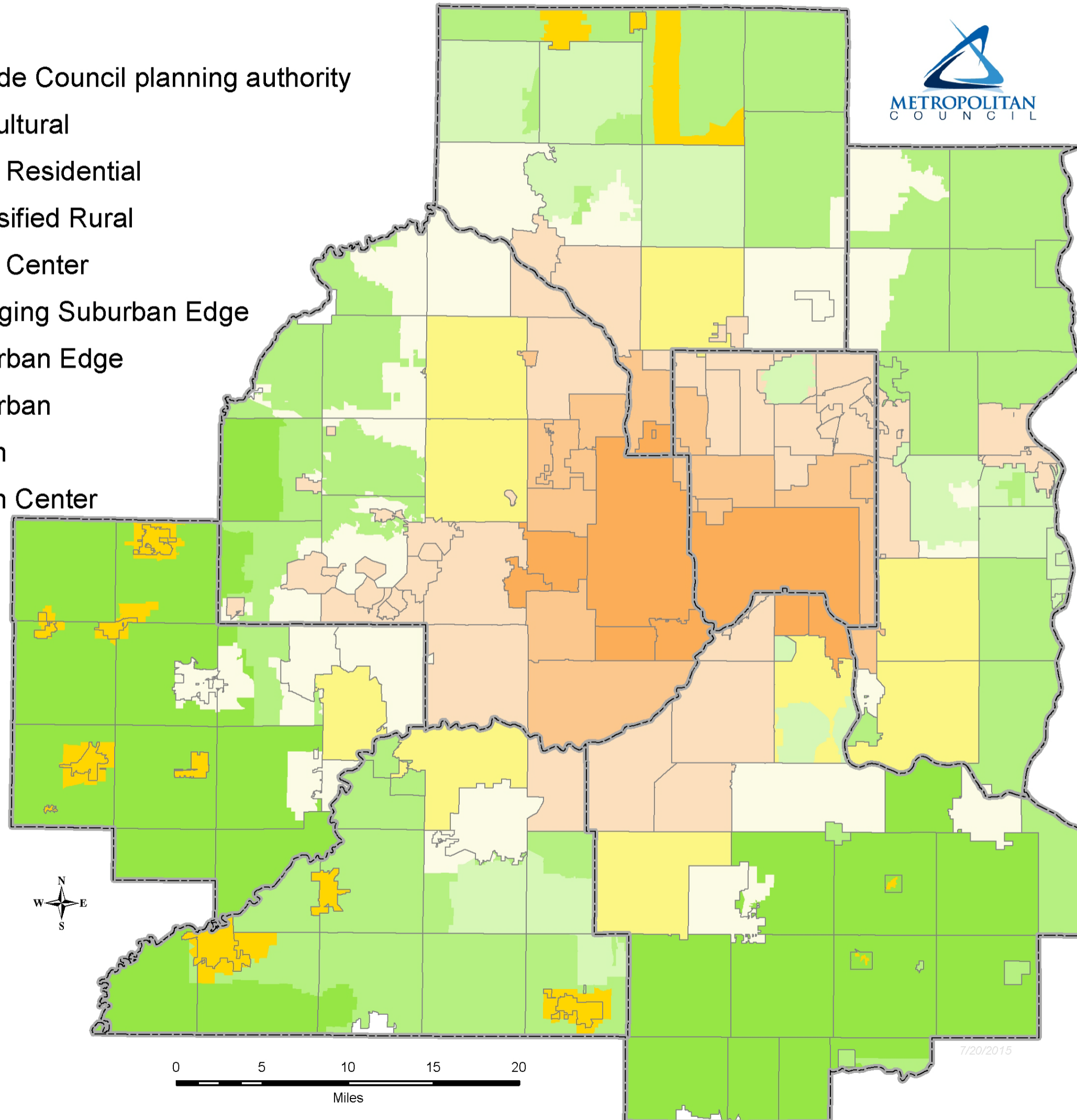


# Community designations

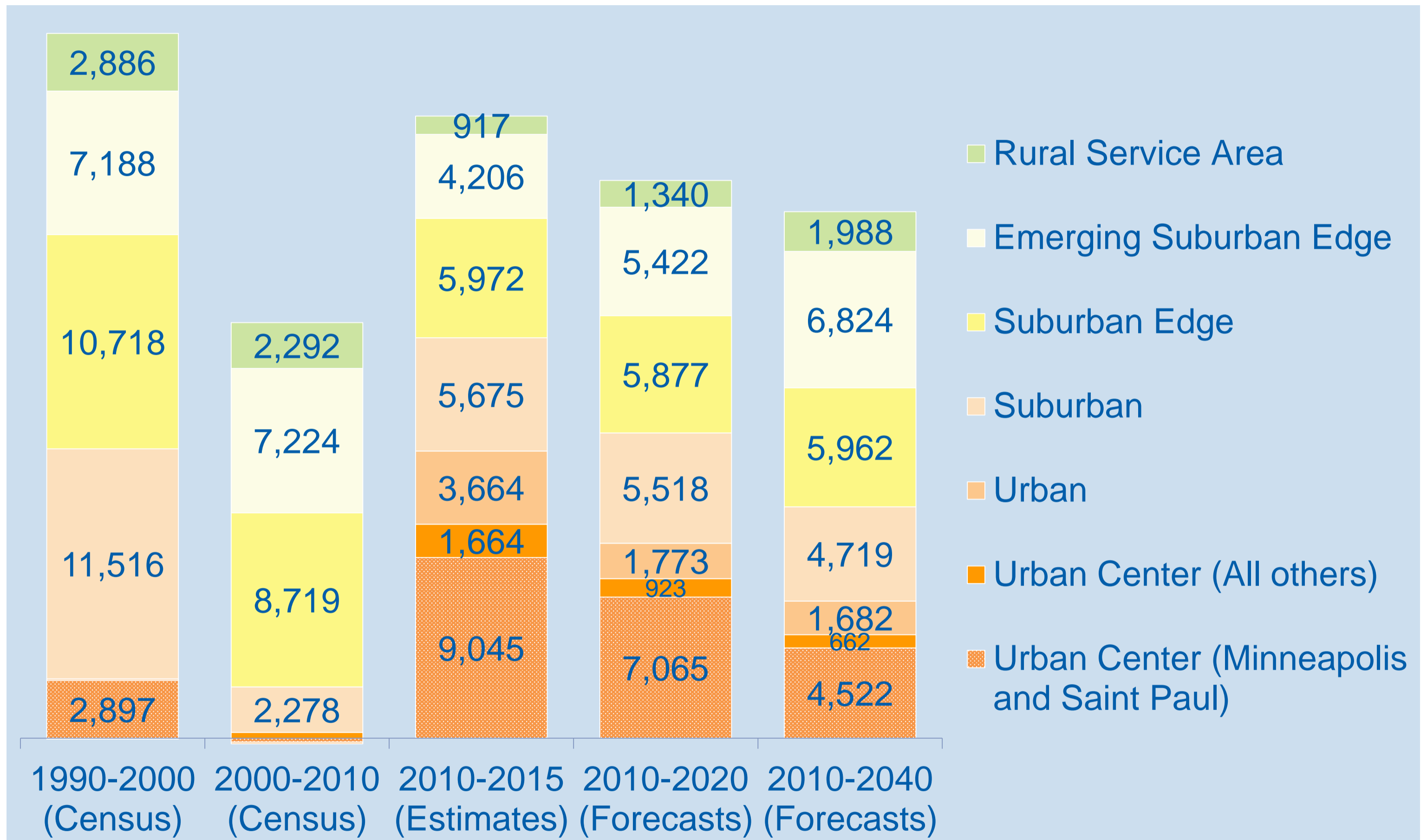


Outside Council planning authority

-  Agricultural
-  Rural Residential
-  Diversified Rural
-  Rural Center
-  Emerging Suburban Edge
-  Suburban Edge
-  Suburban
-  Urban
-  Urban Center



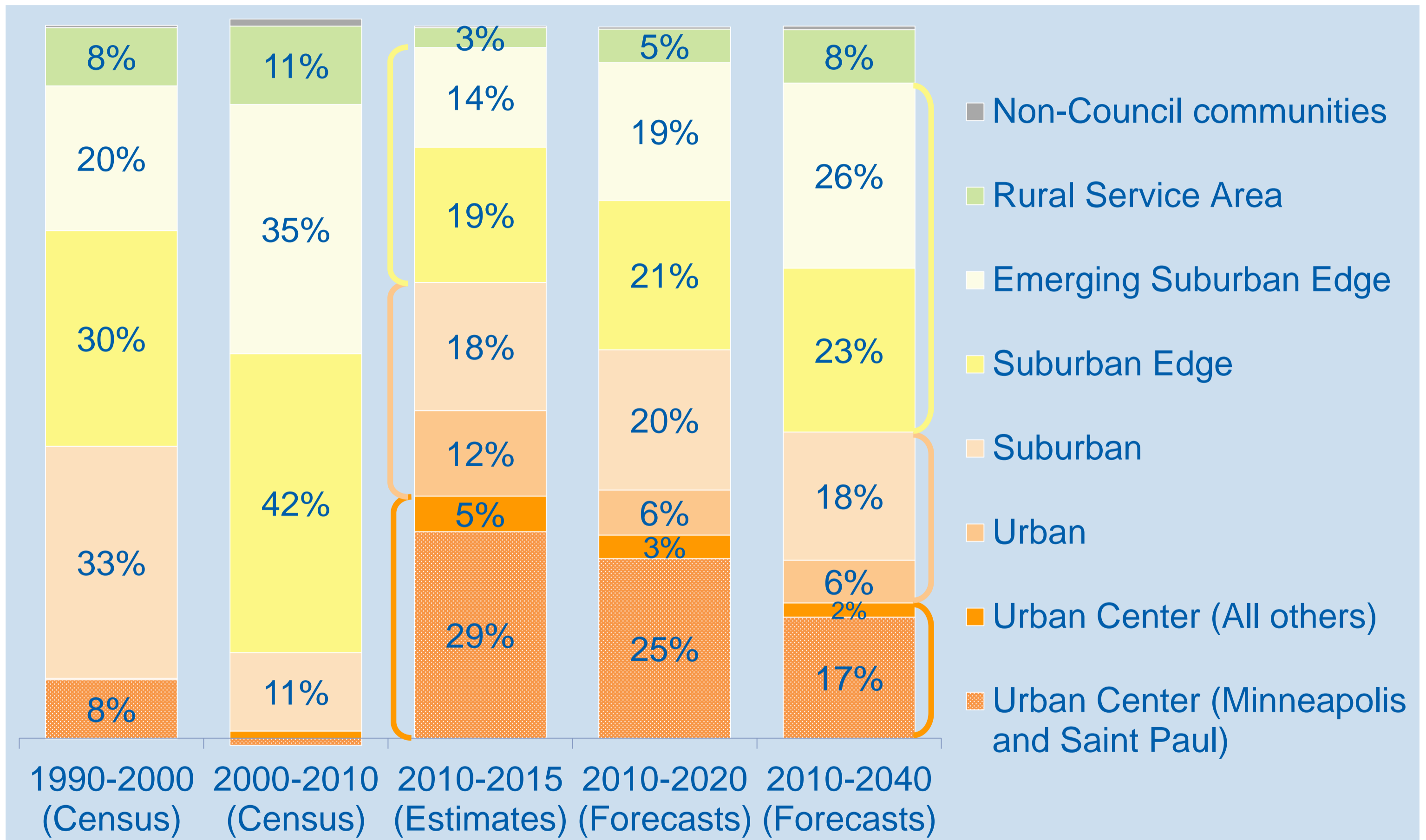
# Average annual population growth



Source: Metropolitan Council  
2015 Population Estimates



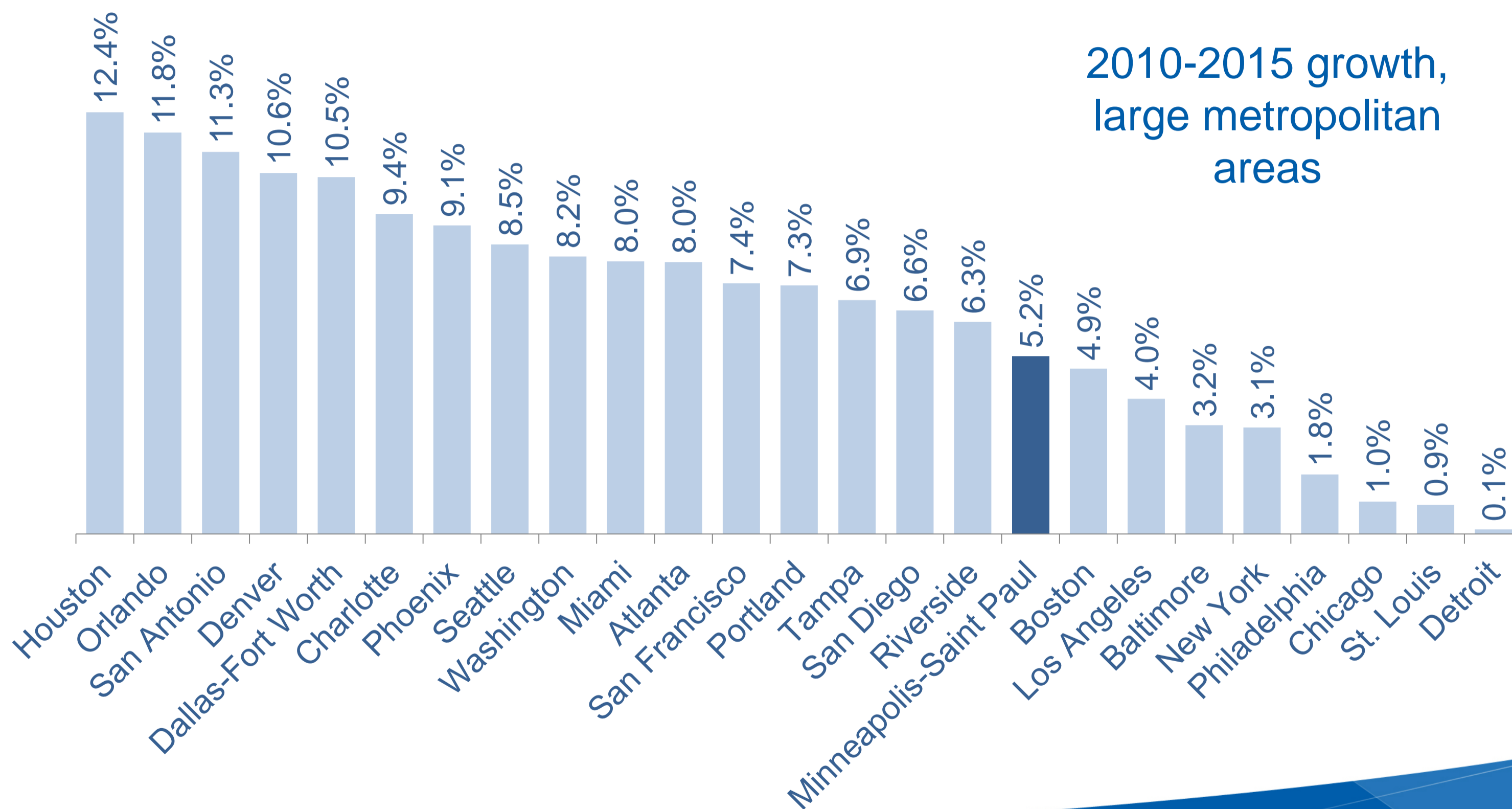
# Growth by community designation



Source: Metropolitan Council  
2015 Population Estimates

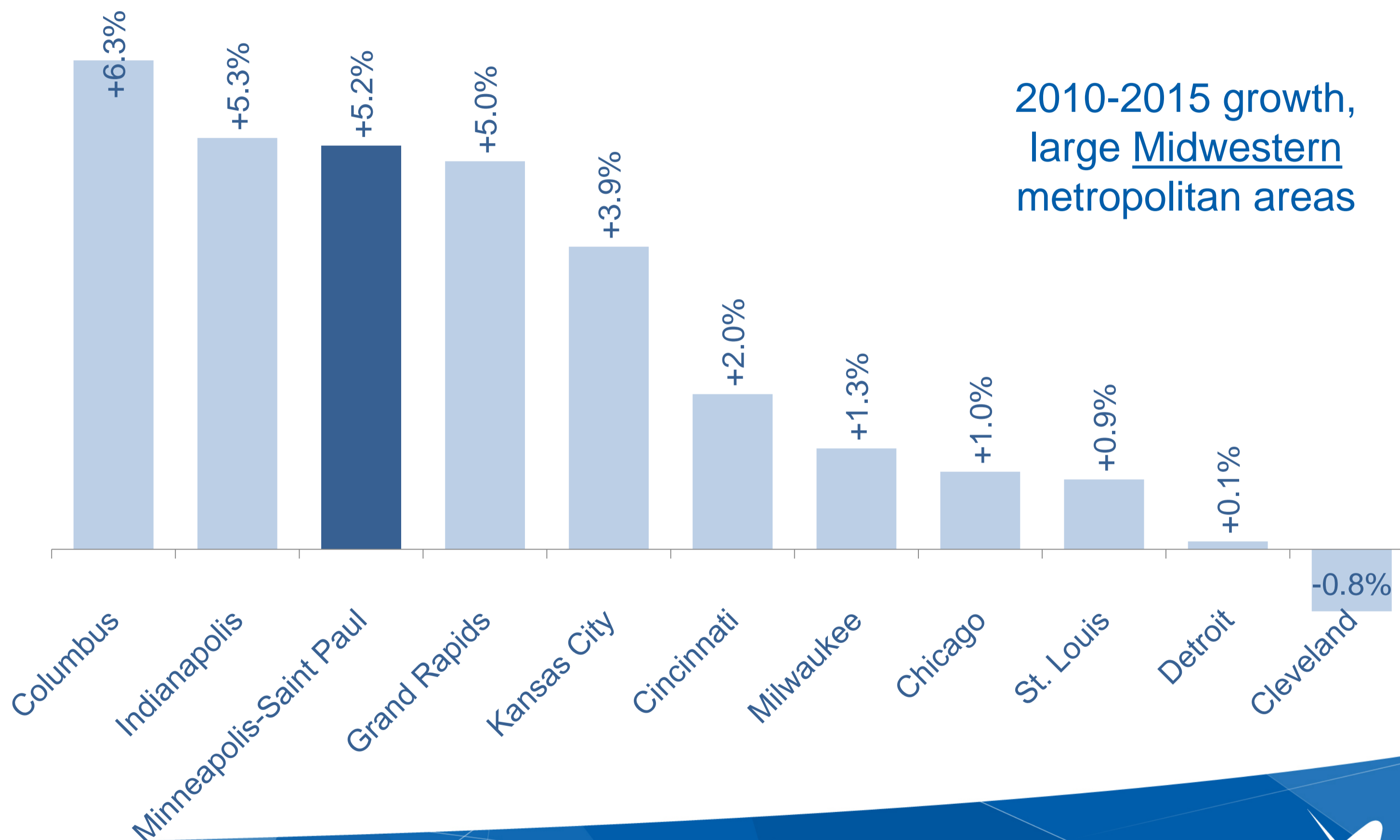


# Our region in context



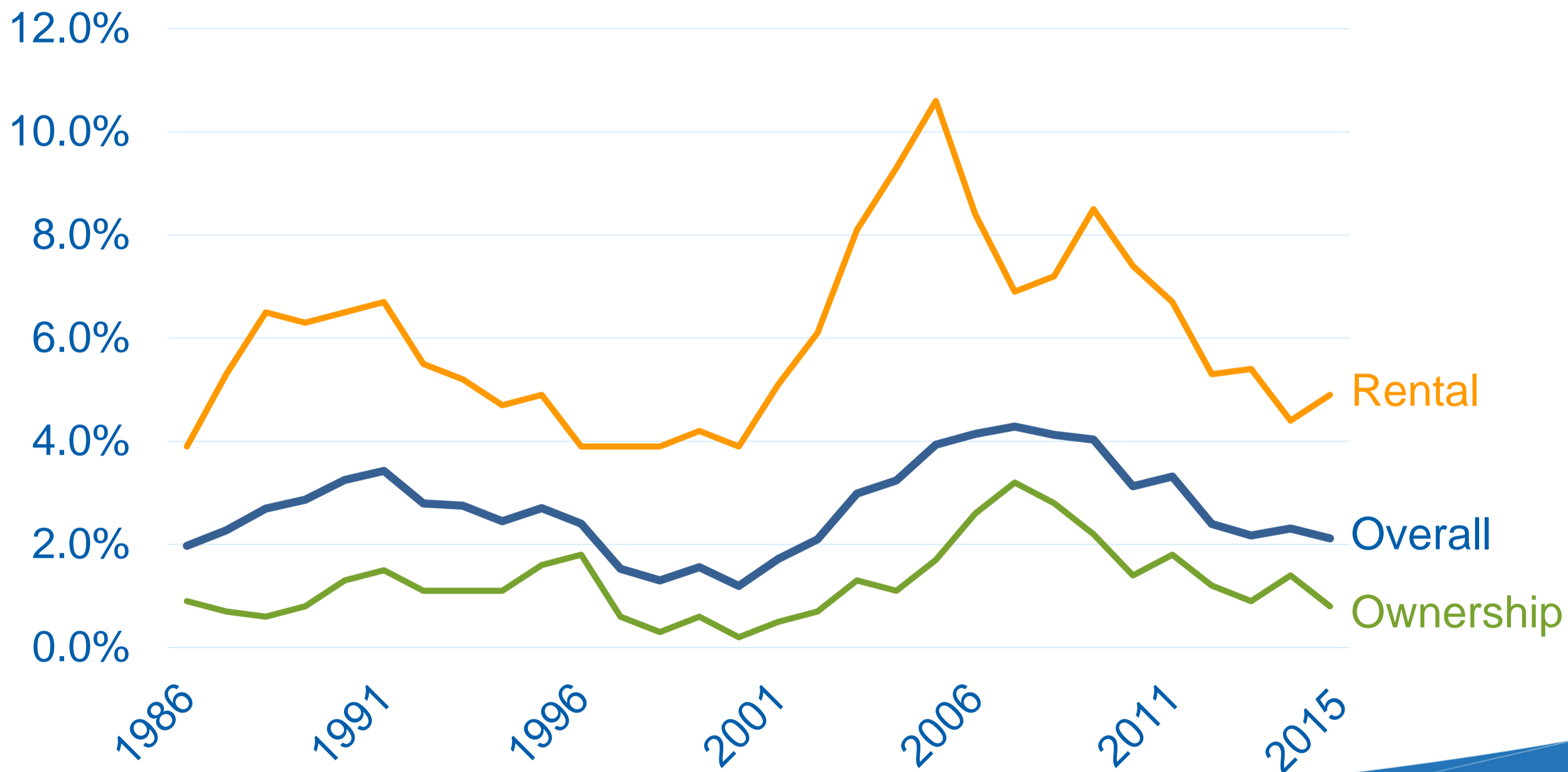
Source: U.S. Census Bureau, Decennial Census, 2010;  
Population Estimates, 2015

# Our region in context



Source: U.S. Census Bureau, Decennial Census, 2010;  
Population Estimates, 2015

# Vacancy rates are very low



Source: U.S. Census Bureau, Current Population Survey / Housing Vacancy Survey



# Population Estimates 2015

For more information, visit: [www.metrocouncil.org/data](http://www.metrocouncil.org/data)

