

# Climate Vulnerability Assessment (CVA)

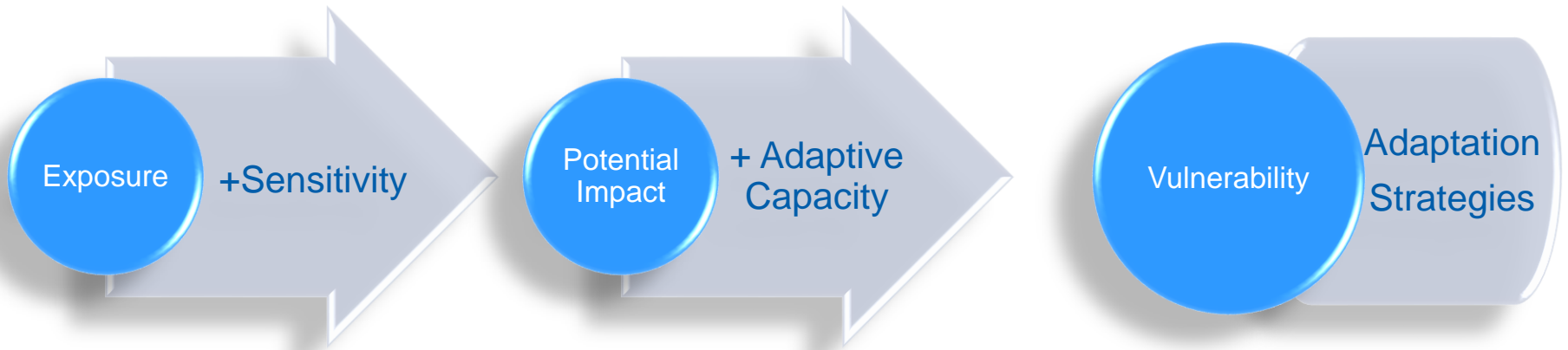
*Community Development Committee*

**Eric Wojchik**  
Senior Planner, Local Planning Assistance

September 19, 2016



# The CVA Process



Climate impacts related to:

- **Water** - Floodways and Localized Flooding
- **Temperature** - Urban Heat Island



# Resilience Dialogues



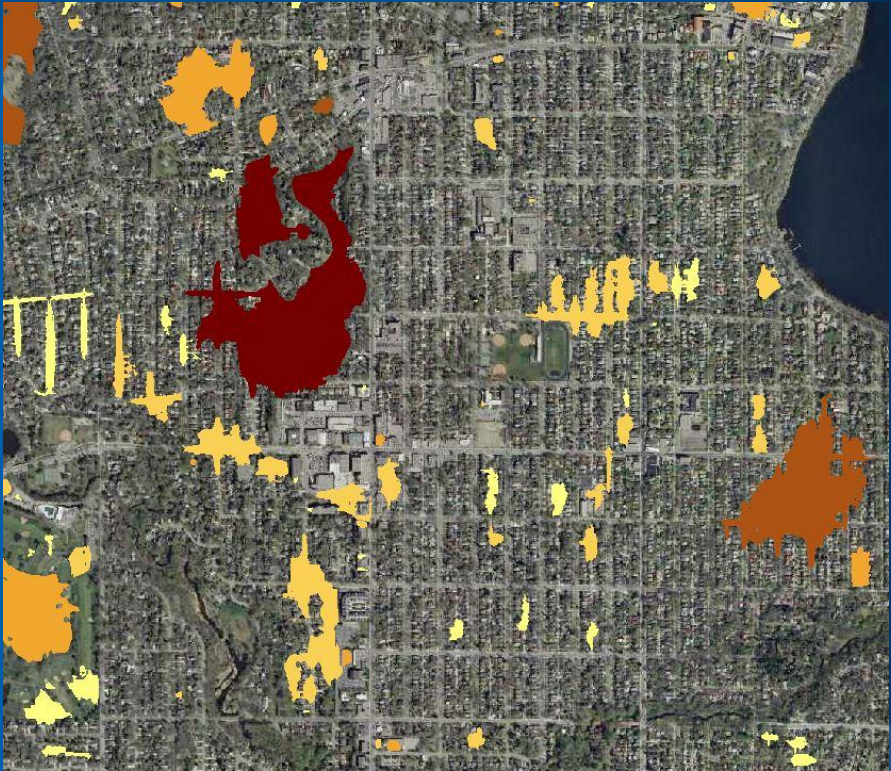
# Minneapolis

City of Lakes





# BlueSpot Flood Map



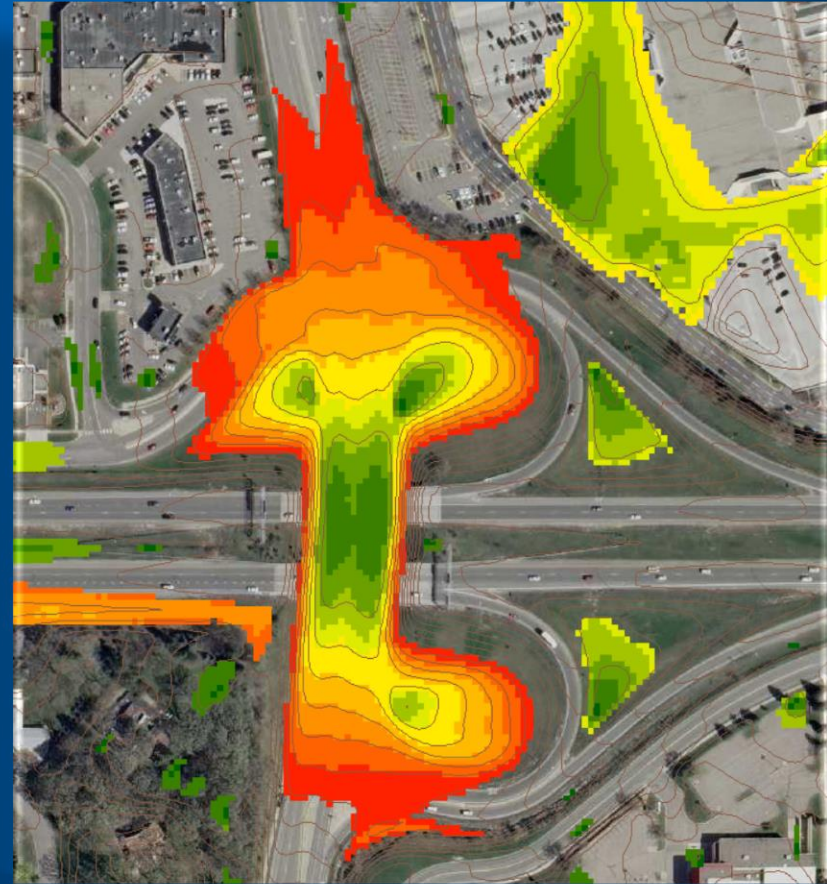


# Flooding

## Flash flood traps cars under Roseville underpass (PHOTO)

BY MIKE MULLEN

TUESDAY, JULY 5, 2016 AT 7:51 PM.



# Extreme Heat

## Vegetation



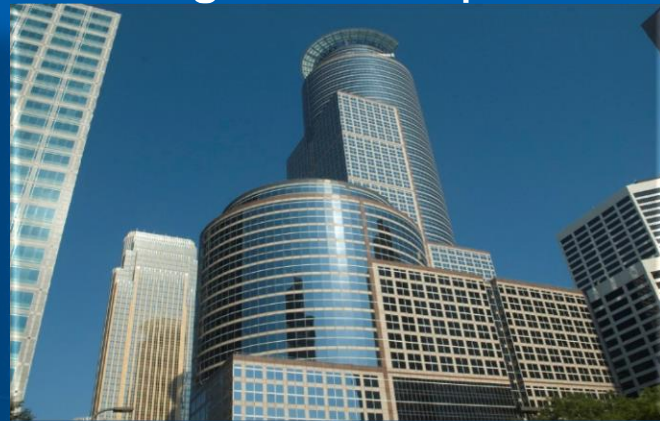
## Impervious Surfaces



## Residual Heat

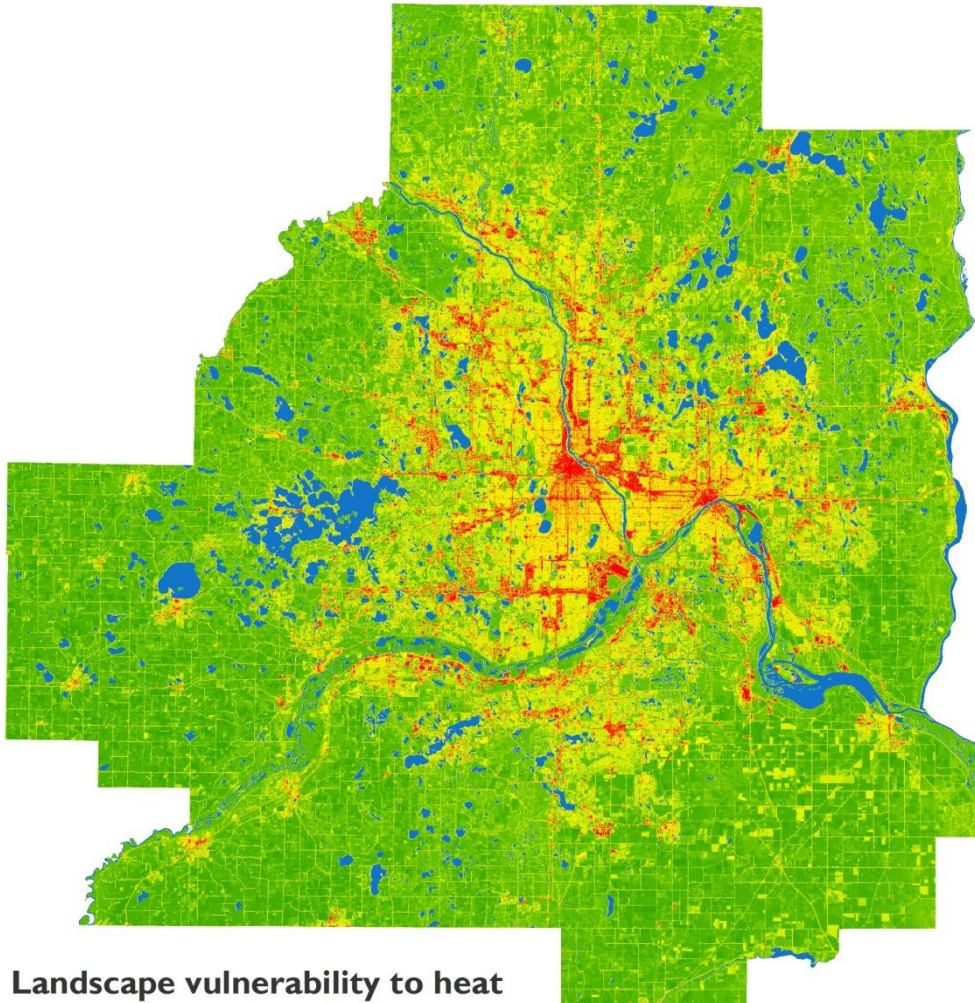


## Building Landscapes








## Landscape vulnerability to heat: Impervious cover and vegetation



### Landscape vulnerability to heat

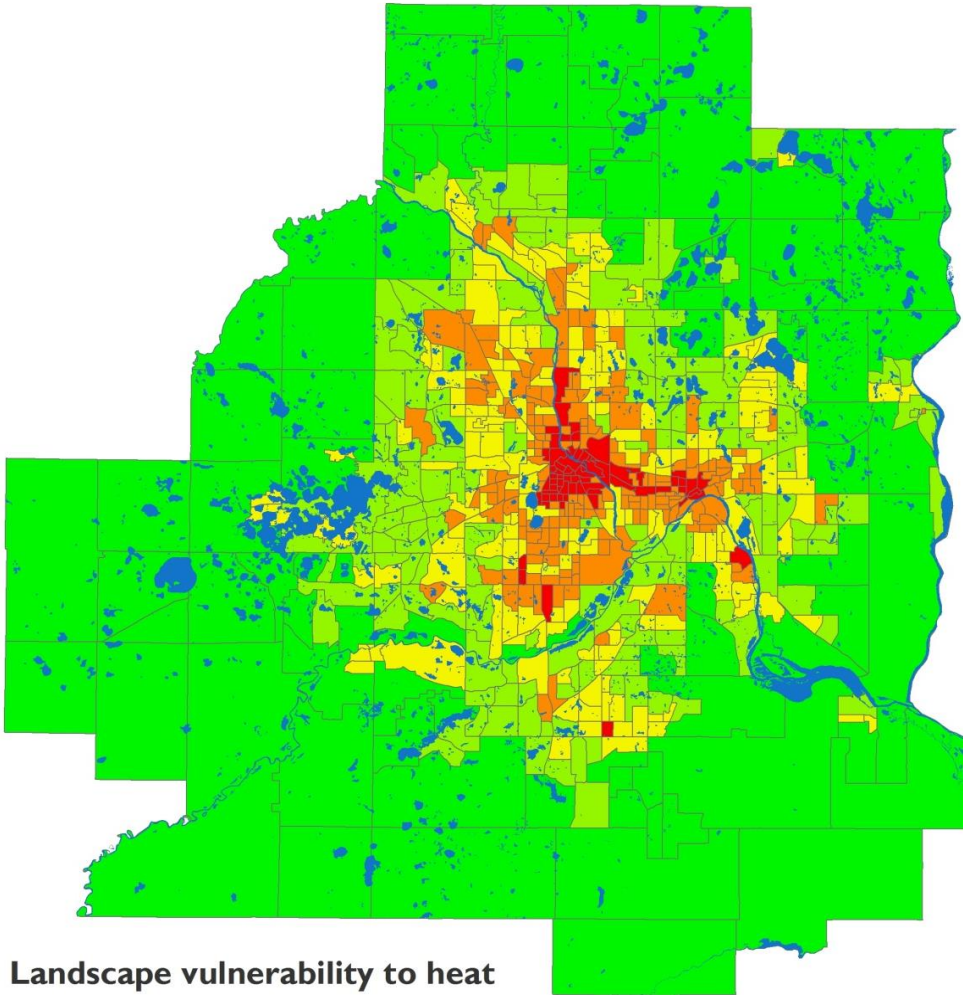
-  Highest landscape vulnerability to heat
-  Lowest landscape vulnerability to heat
-  Water body

Cartographer: Gordy Moore  
Date: Created July 2016  
Data: University of Minnesota Remote  
Sensing Lab, U.S. Geological Survey

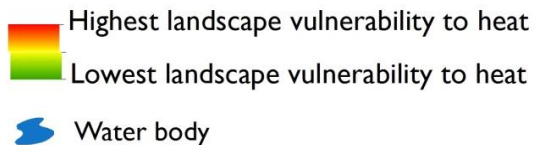
# Extreme Heat Base Map

**Base heat  
vulnerability:**  
*Composite map,  
Normalized  
Difference  
Vegetation Index  
(NDVI)/Impervious  
& land cover*

## Landscape vulnerability to heat: Impervious cover and vegetation



### Landscape vulnerability to heat



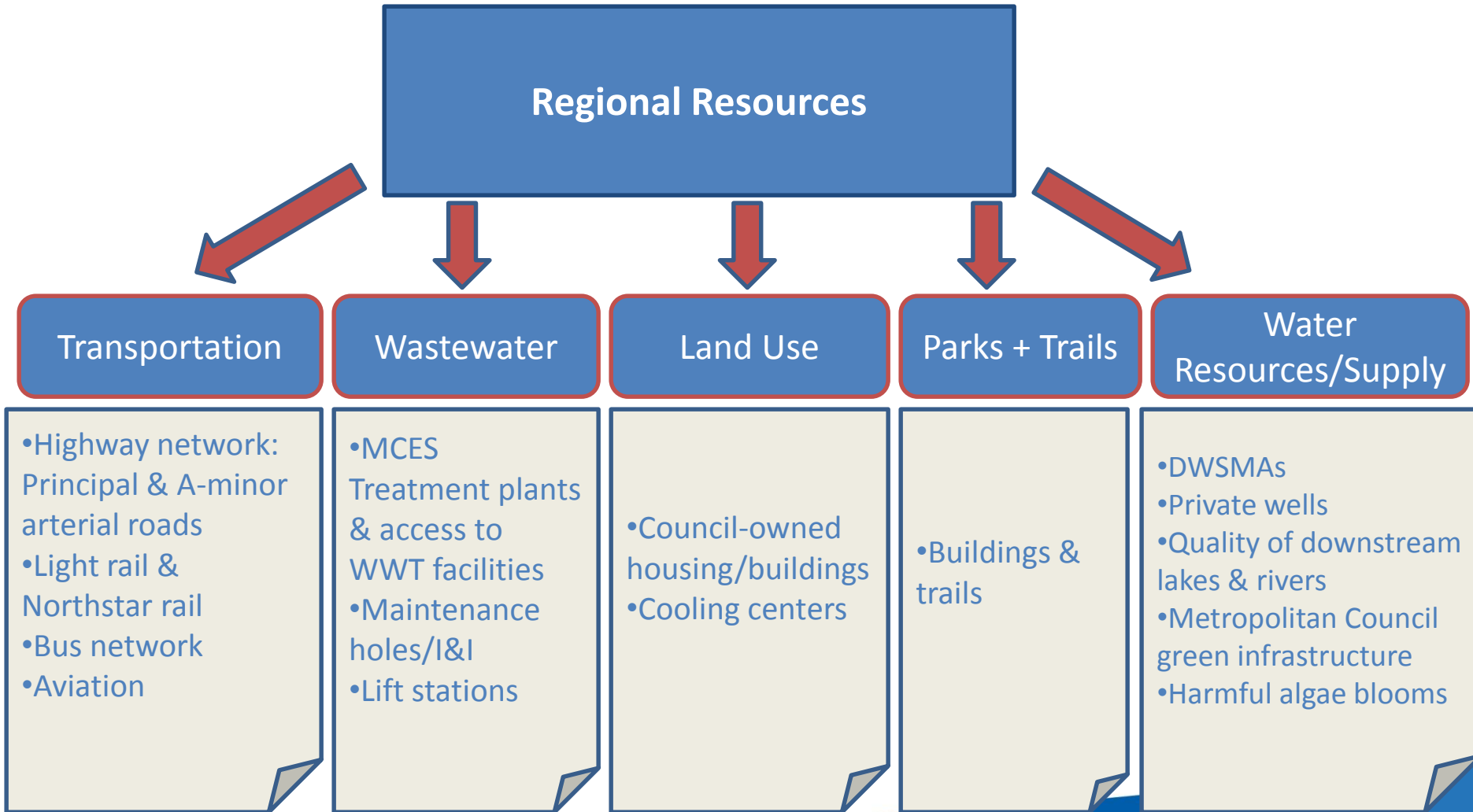
Cartographer: Gordy Moore  
Date: Created July 2016  
Data: University of Minnesota Remote  
Sensing Lab, U.S. Geological Survey

# Extreme Heat Base Map

*Composite,  
visualized by  
census tract*

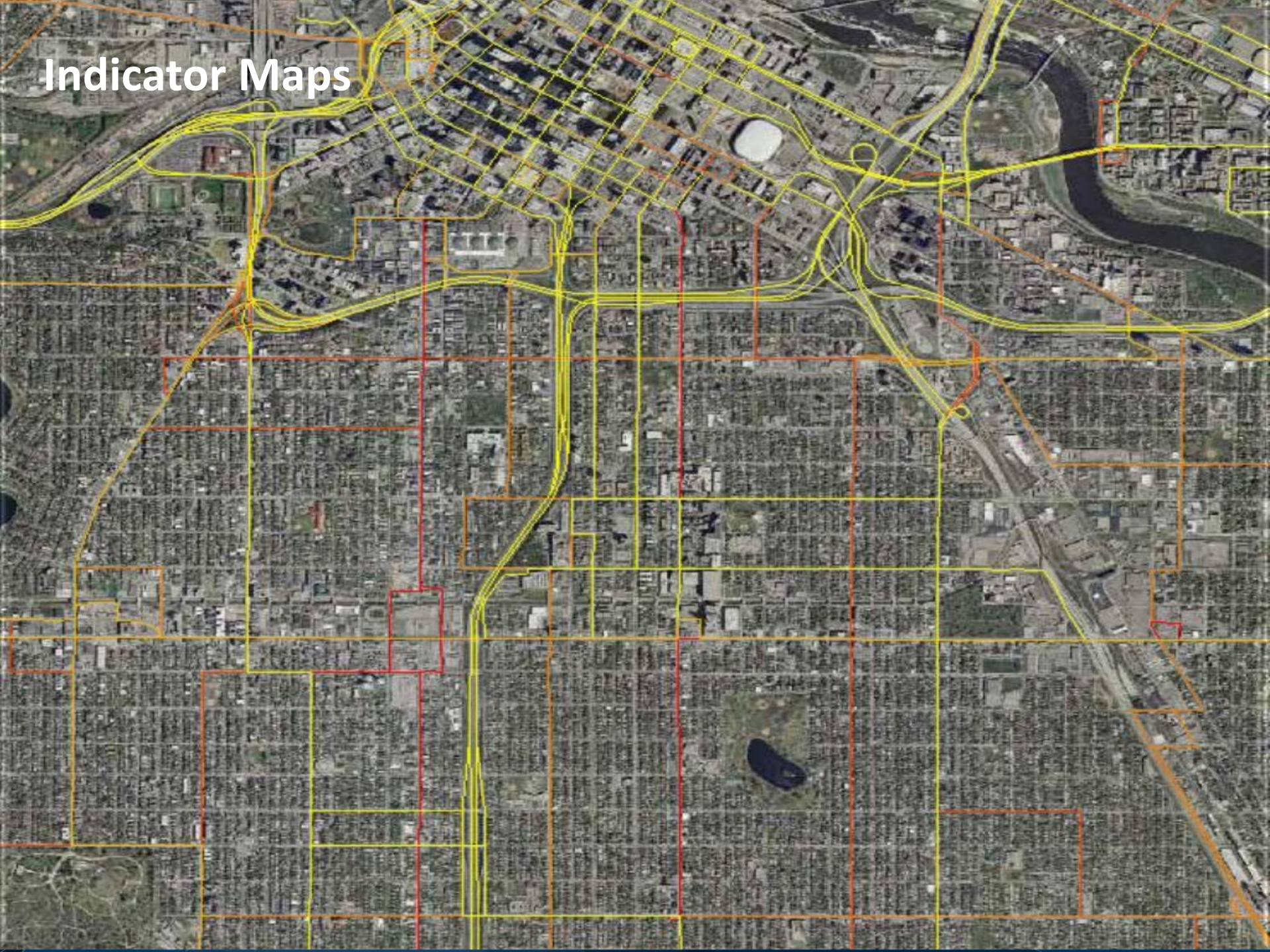


# What are we assessing?



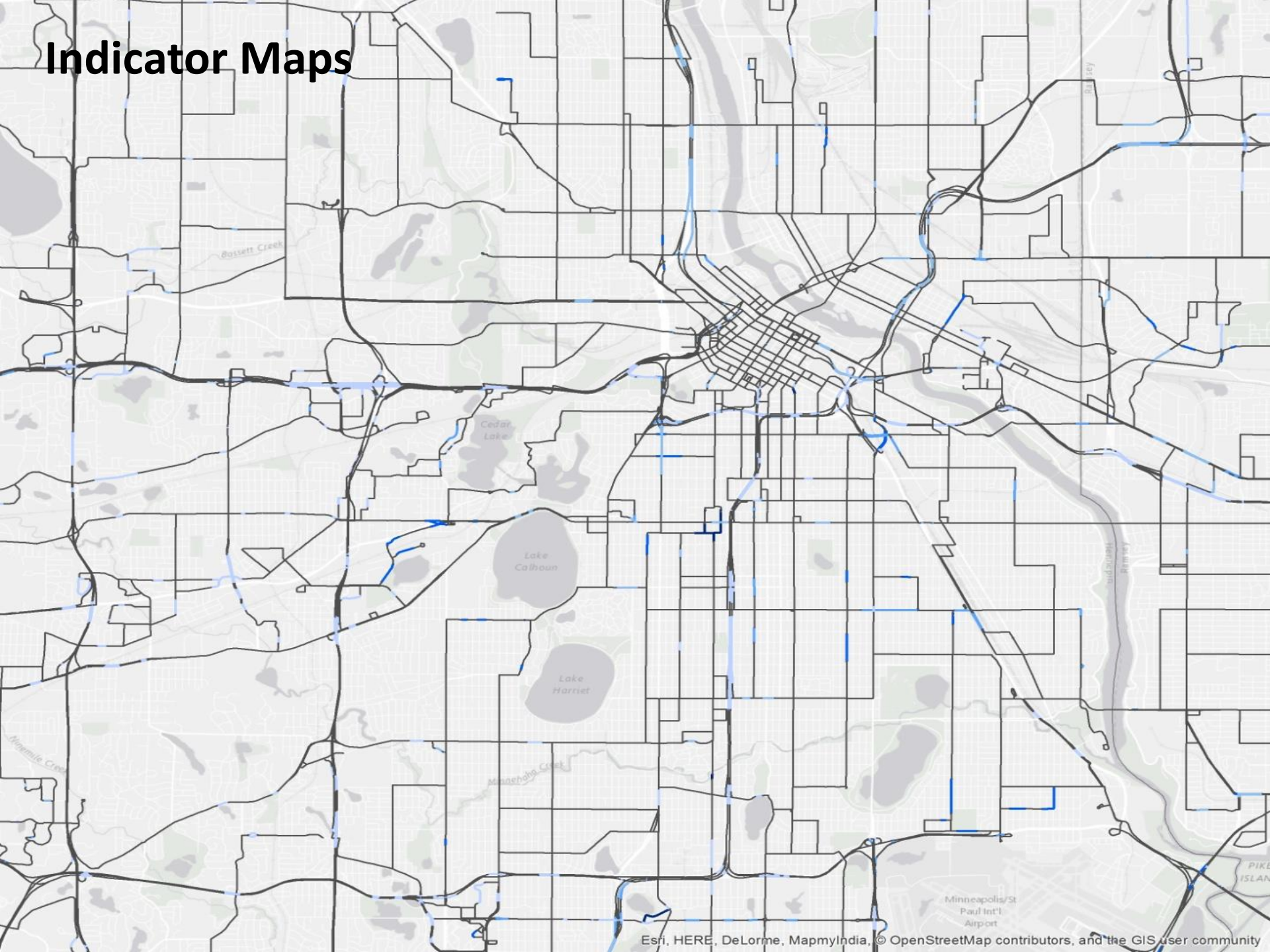


# Indicator Maps

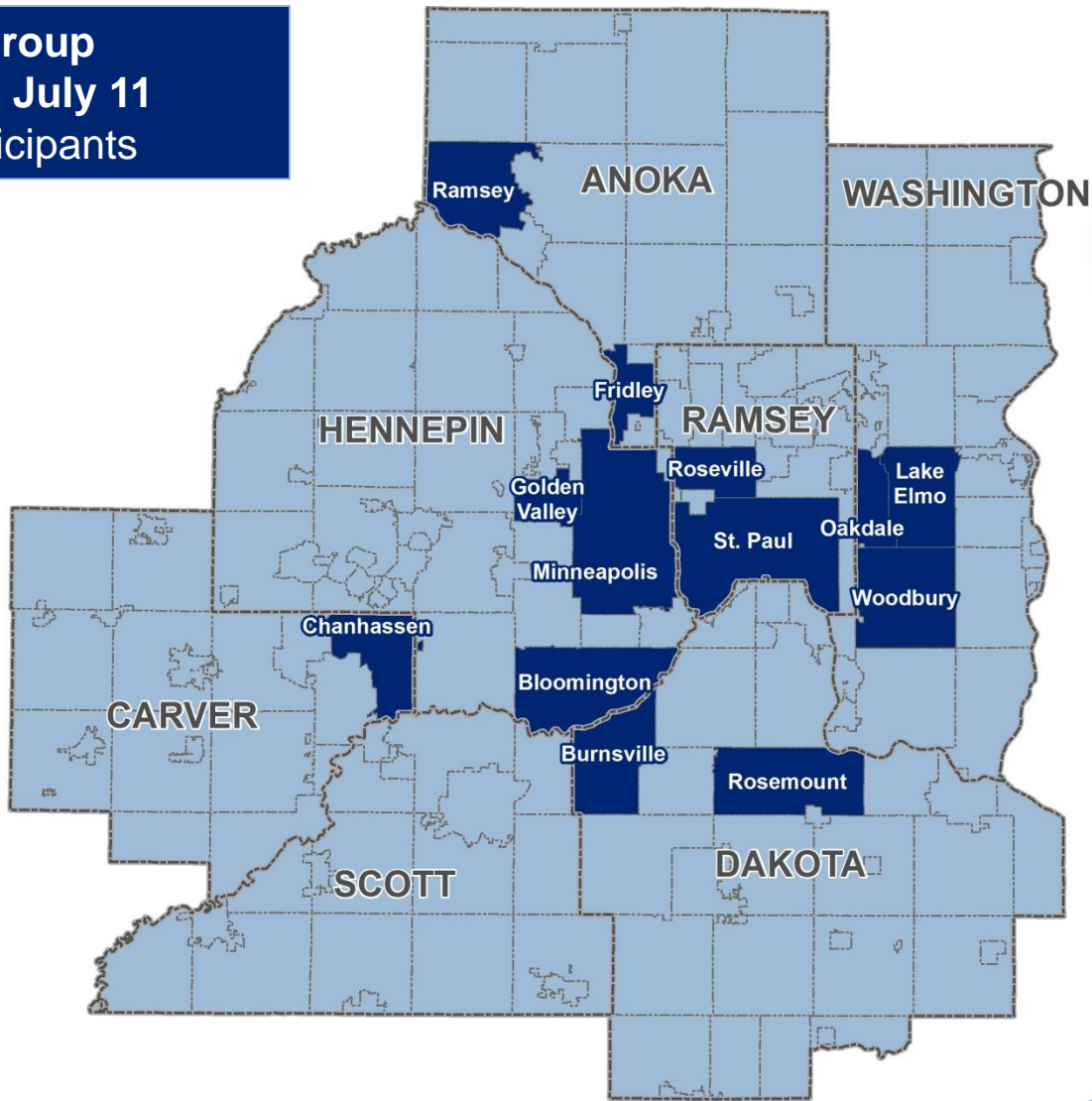




# Indicator Maps



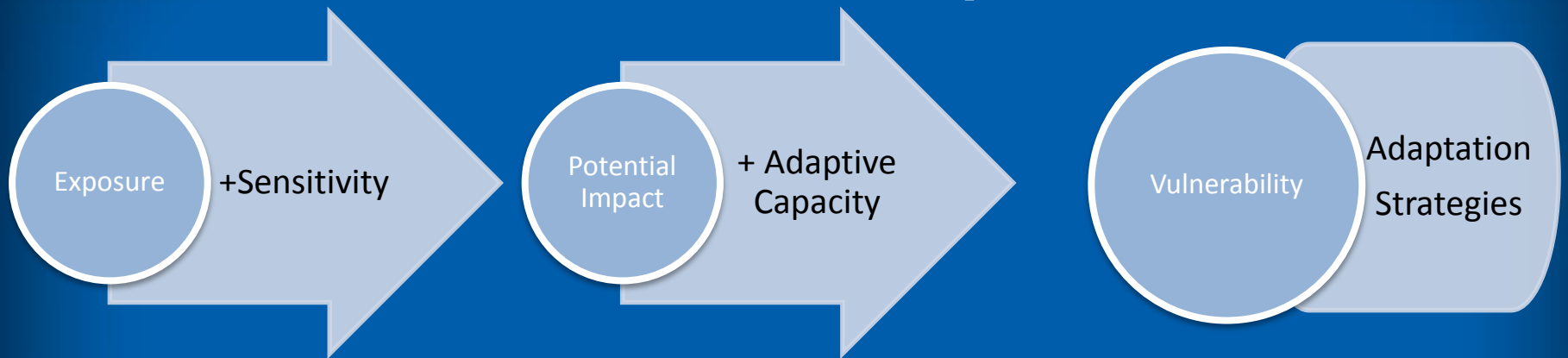
**Focus Group  
Monday, July 11  
City Participants**



**Climate  
Vulnerability  
Assessment**



# Next Steps



- Finalize Report and Local Planning Handbook tools
  - 1<sup>st</sup> Quarter of 2017
- Rollout and CVA training
- Socio-economic Vulnerability Assessment
  - January to May 2017

# Thank you.

Eric Wojchik  
Senior Planner  
Local Planning Assistance  
[eric.wojchik@metc.state.mn.us](mailto:eric.wojchik@metc.state.mn.us)  
651.602.1330

