

2016 Population Estimates

Community Development Committee

July 17, 2017



Estimates are not forecasts!

- The Council's forecasts look ahead to 2040
- Estimates look back in time to the previous year



Council's population estimates

- Conducted since 1971
- Mandated under Minnesota Statutes 473.24
- Timeline and process defined in statute
 - Preliminary estimates sent out mid-May
 - Comments / challenges addressed
 - Certified to State Demographer and Commissioner of Revenue

The importance of estimates

- Official state government population estimates used to allocate:
 - Local government aid
 - Local street aid
 - Tax-base sharing under Fiscal Disparities
- Some local governments have their own uses
- Help Council staff track growth and development

A housing-stock-based approach

- Base housing unit number: from the 2010 Census
- “How many housing units were there in 2016?”
 - Changes in housing stock by type
 - City-provided data on building permits / demolitions

A housing-stock-based approach

- Base housing unit number: from the 2010 Census
- “How many housing units were there in 2016?”
- “How many of those housing units were occupied?”
 - Occupancy rates by type
 - American Community Survey (U.S. Census Bureau)
 - U.S. Postal Service data

A housing-stock-based approach

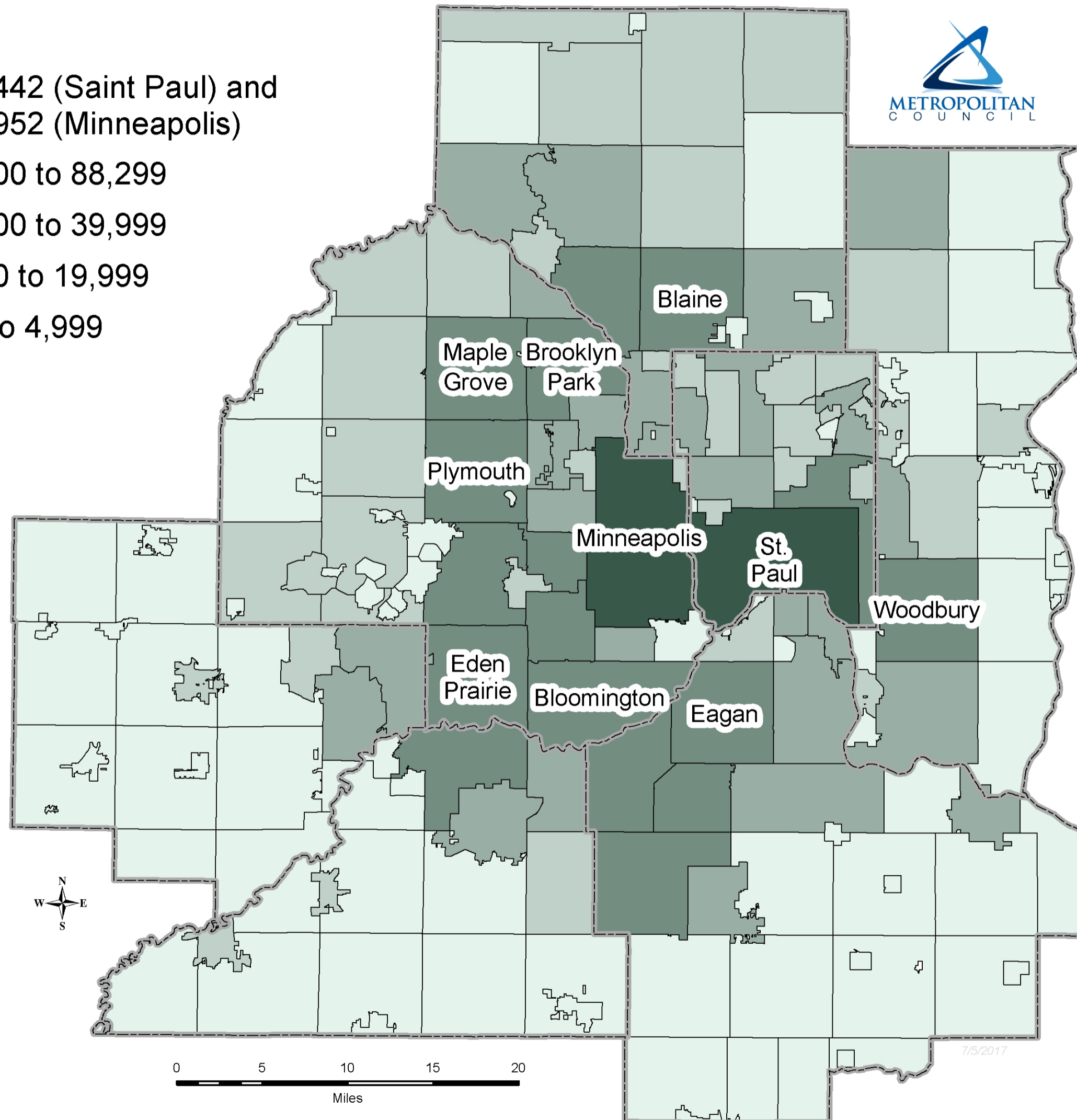
- Base housing unit number: from the 2010 Census
- “How many housing units were there in 2016?”
- “How many of those housing units were occupied?”
- “How many people lived in those units?”
 - Average household sizes by type
 - American Community Survey (U.S. Census Bureau)

2016 population estimates

- 2016 population: 3,041,526
 - Increase of 191,959 residents from 2010
 - 6.7% growth since 2010
- Components of growth:
 - Two-thirds “natural growth” (births > deaths)
 - One-third migration

Population in 2016

- 304,442 (Saint Paul) and 419,952 (Minneapolis)
- 40,000 to 88,299
- 20,000 to 39,999
- 5,000 to 19,999
- 110 to 4,999









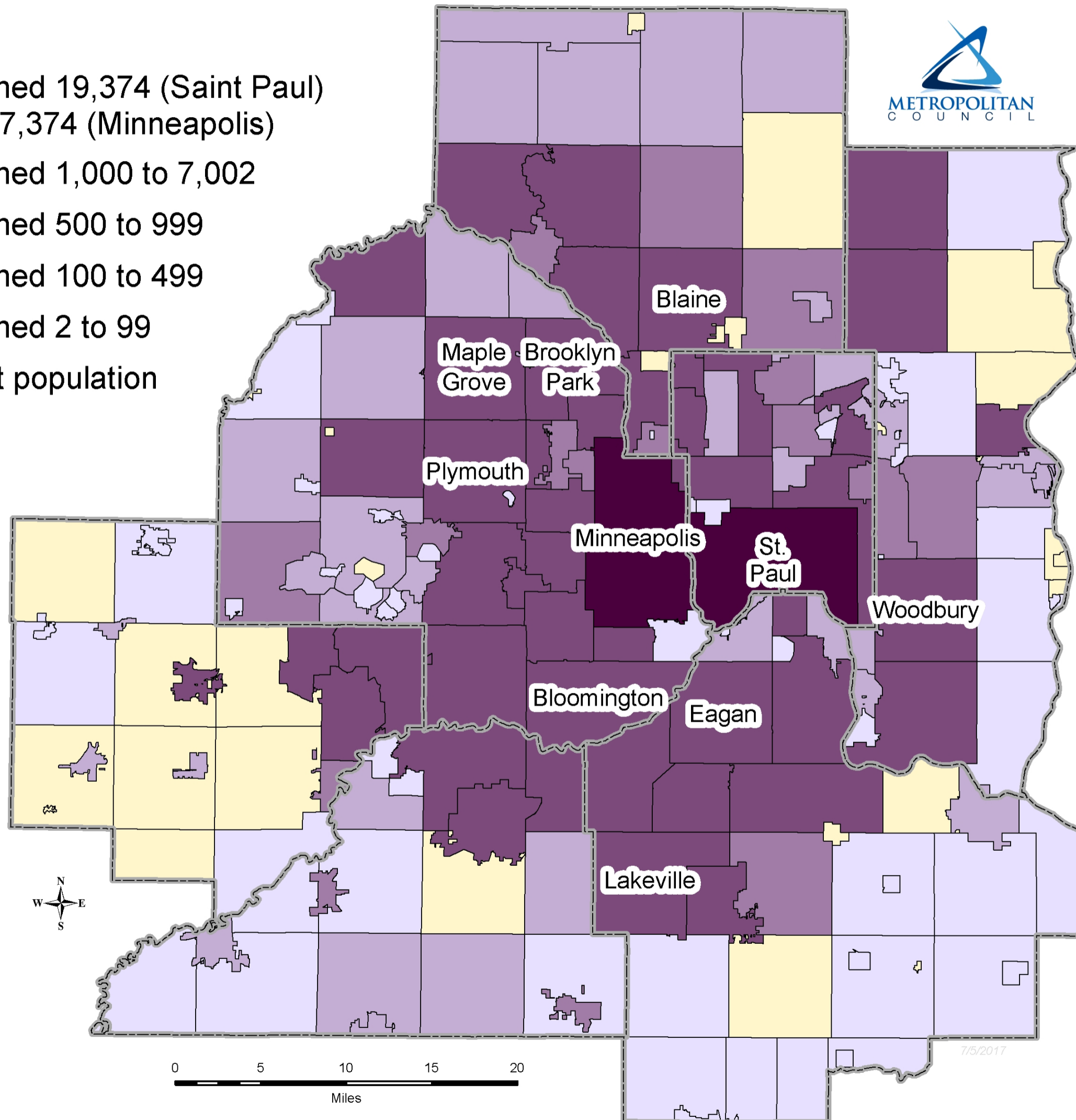
*Source:
Metropolitan
Council 2016
Population
Estimates*

*Note: The ten
most populous
cities in the region
are labeled.*



Population change, 2010 to 2016

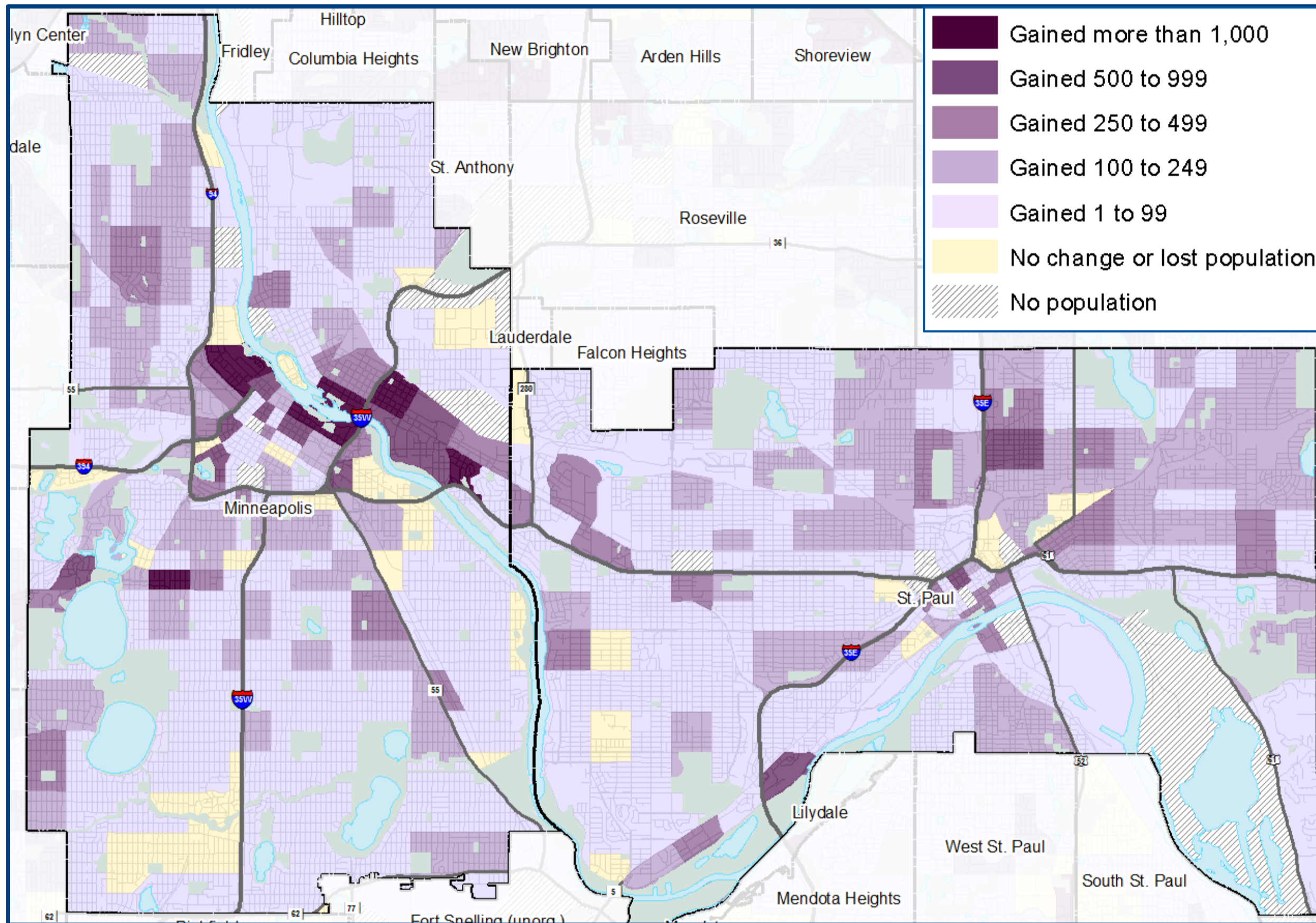
-  Gained 19,374 (Saint Paul) or 37,374 (Minneapolis)
-  Gained 1,000 to 7,002
-  Gained 500 to 999
-  Gained 100 to 499
-  Gained 2 to 99
-  Lost population



*Source:
Metropolitan
Council 2016
Population
Estimates*

*Note: The ten
cities with the
most growth are
labeled.*

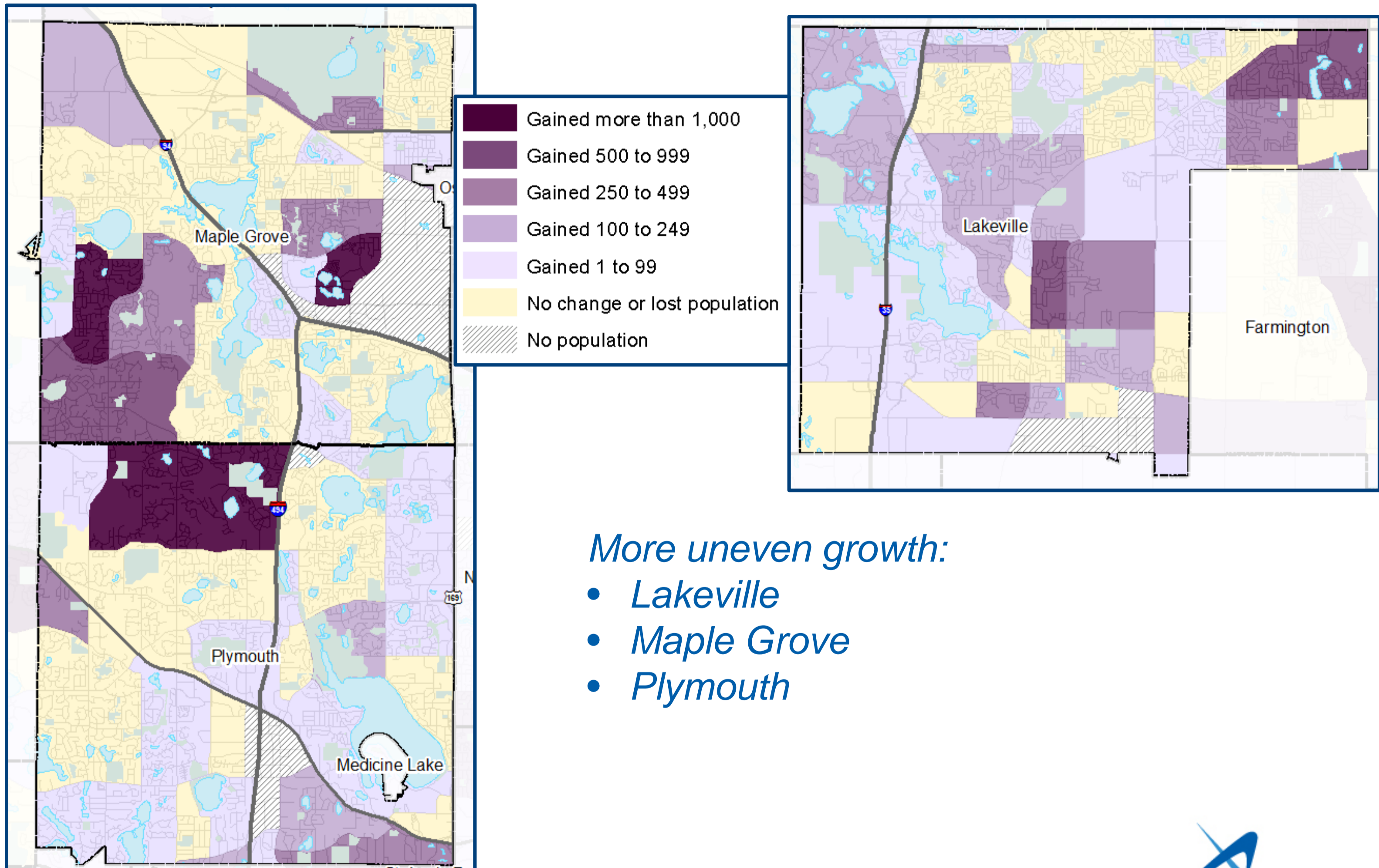
Growth patterns (1)



Most areas grew: Minneapolis and Saint Paul

Source: Metropolitan Council 2016
Population Estimates for
Transportation Analysis Zones (TAZs)

Growth patterns (2)

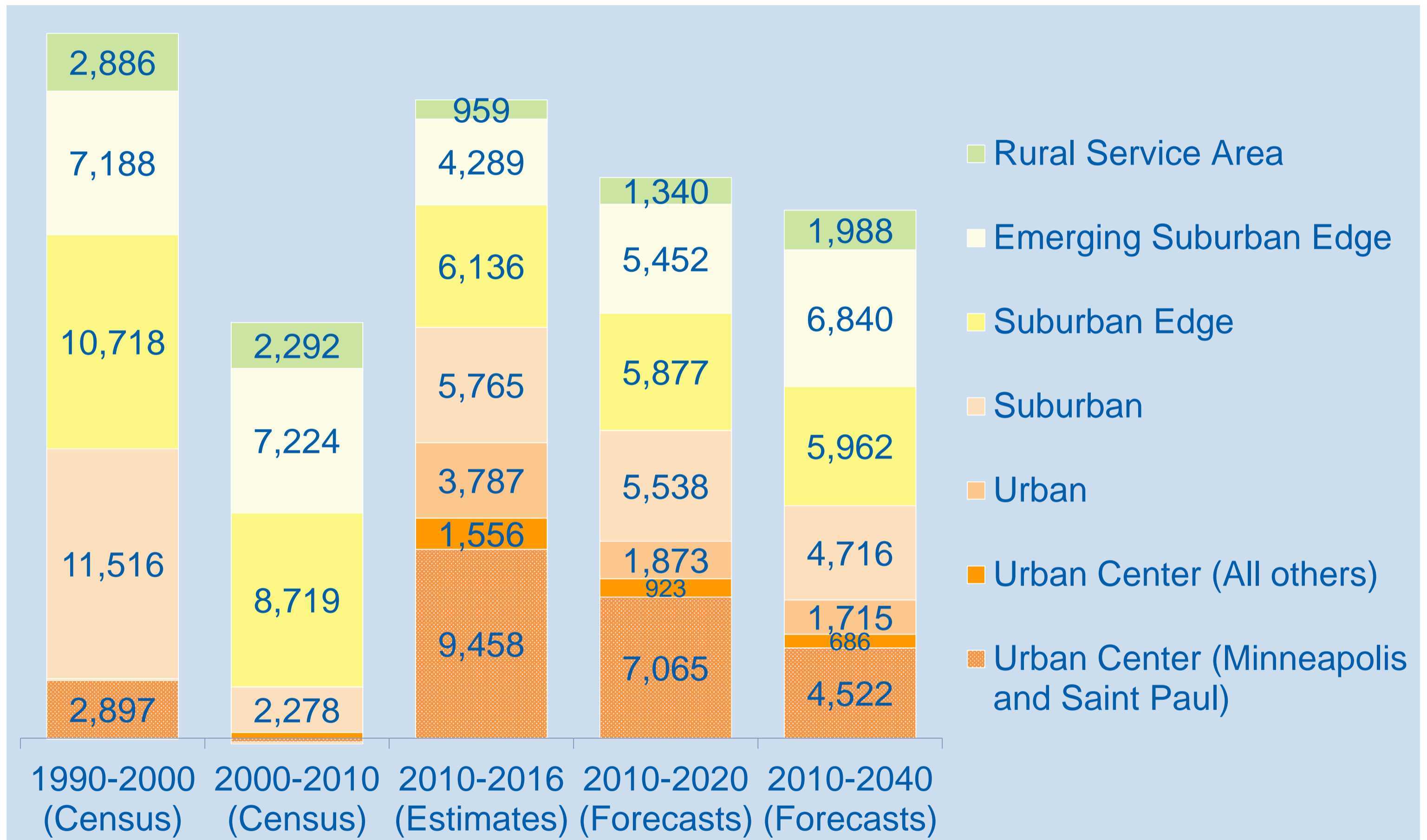


More uneven growth:

- *Lakeville*
- *Maple Grove*
- *Plymouth*

Source: Metropolitan Council 2016
Population Estimates for
Transportation Analysis Zones (TAZs)

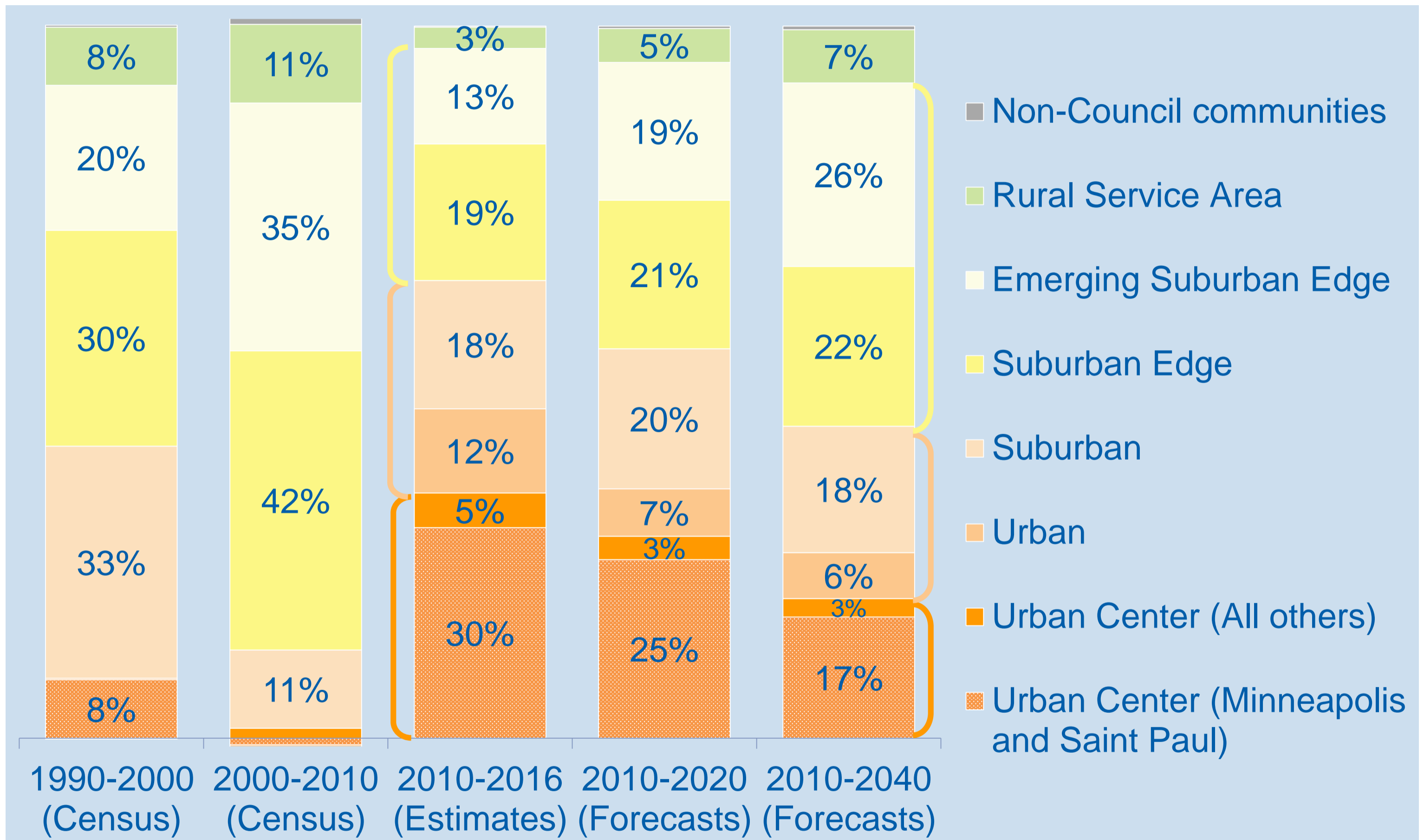
Average annual population growth



Source: Metropolitan Council
2016 Population Estimates



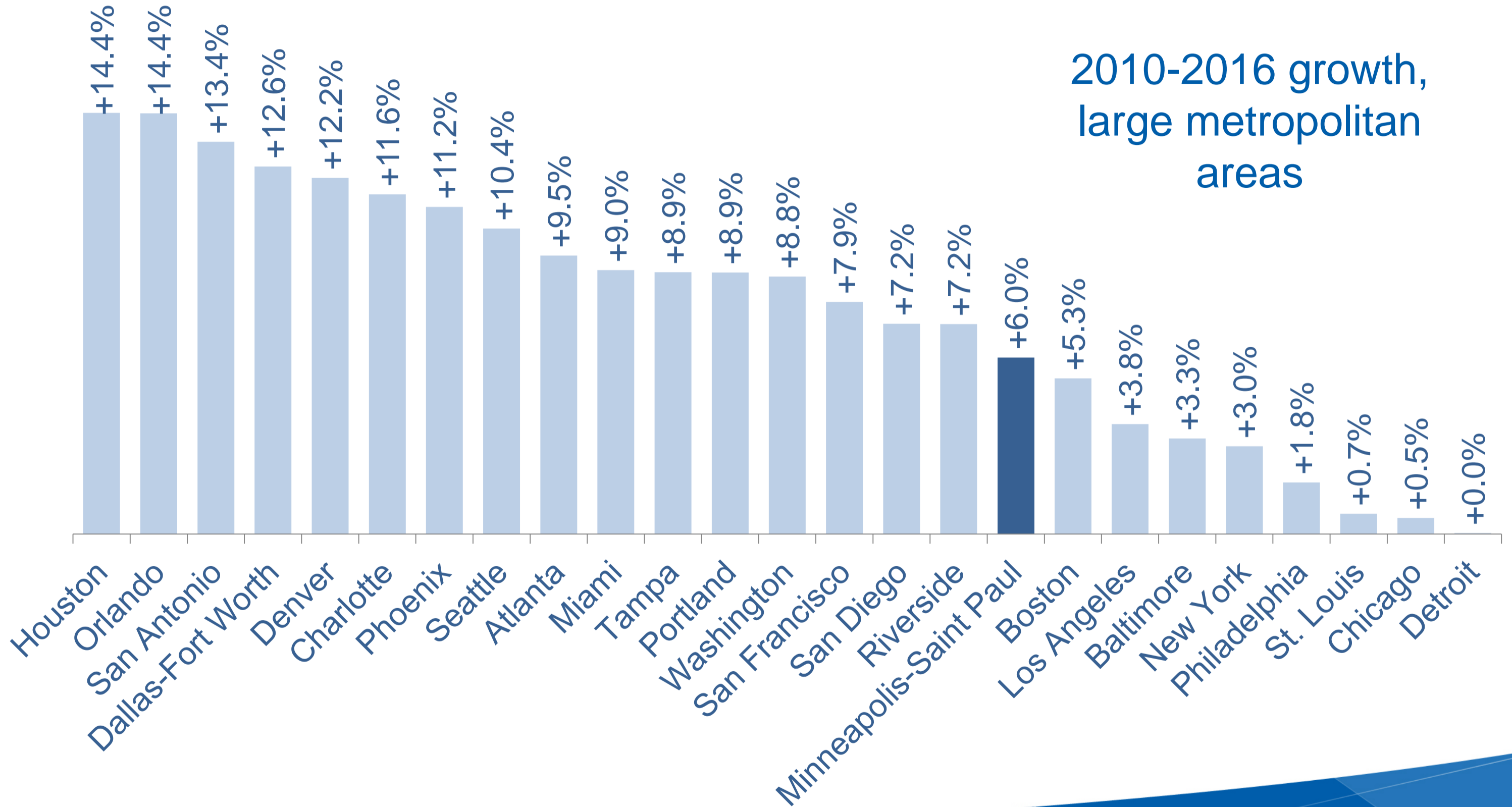
Growth by community designation



Source: Metropolitan Council
2016 Population Estimates

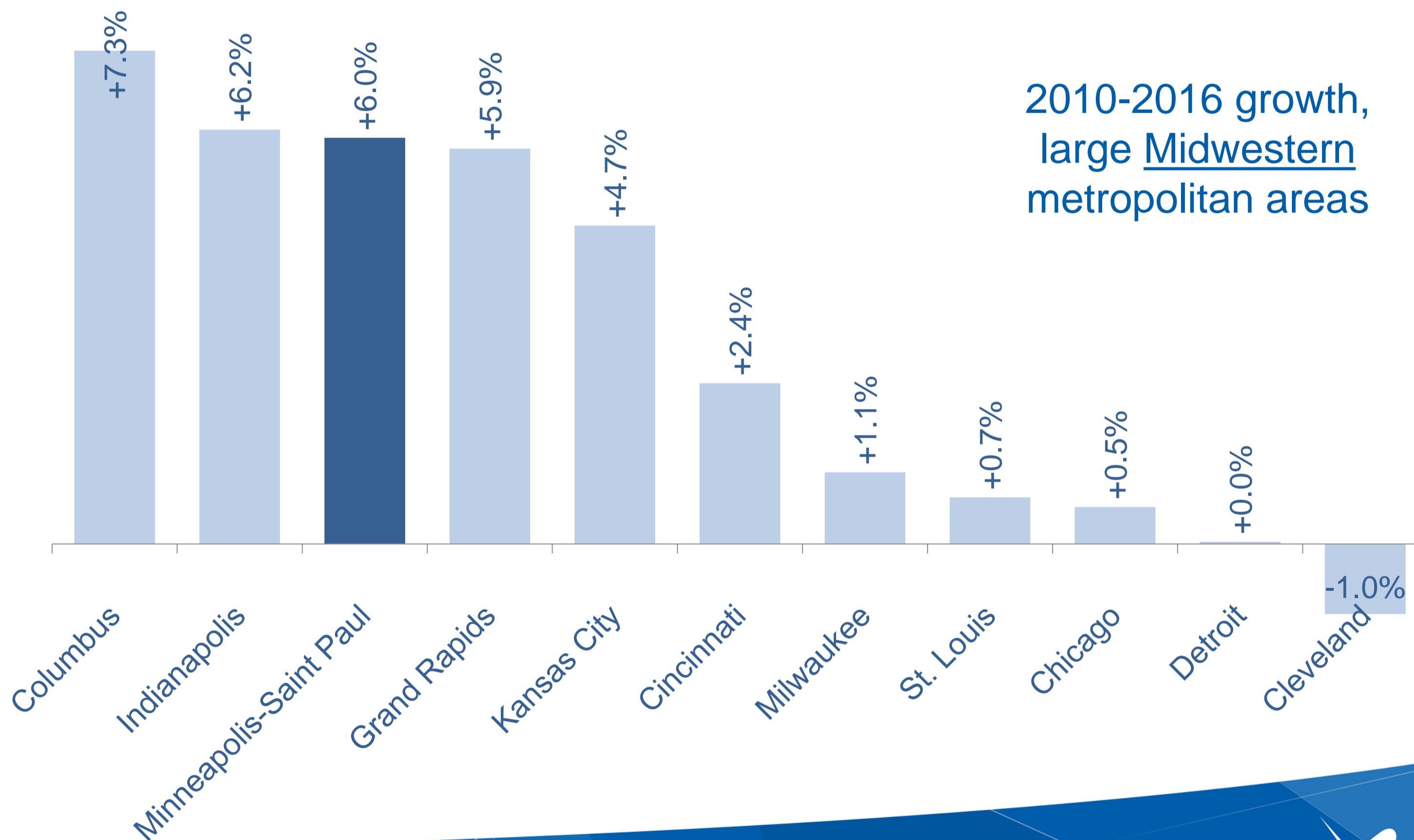


Our region in context



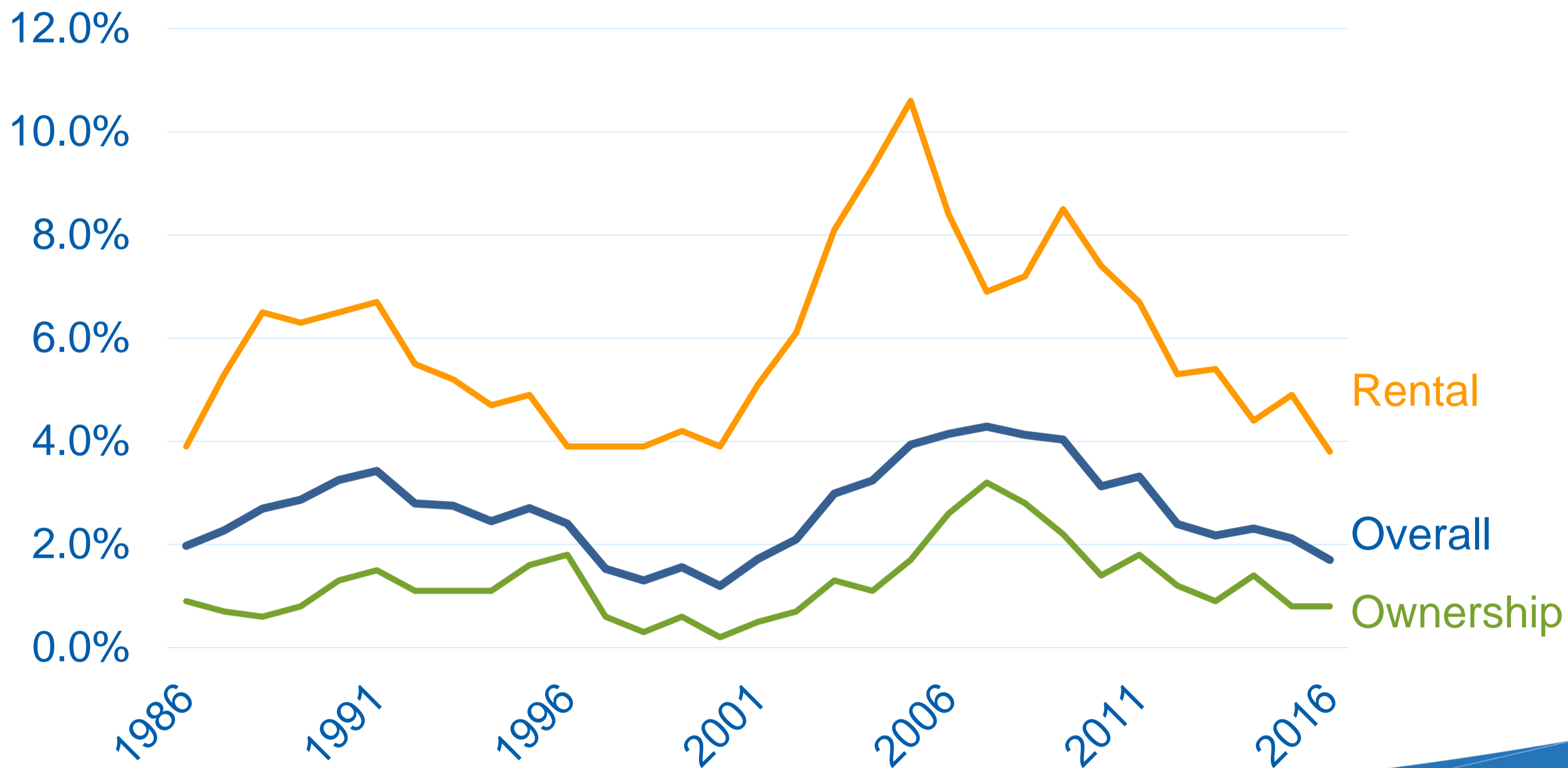
Source: U.S. Census Bureau, Decennial Census, 2010; Population Estimates, 2016

Our region in context



Source: U.S. Census Bureau, Decennial Census, 2010; Population Estimates, 2016

Vacancy rates are very low



Source: U.S. Census Bureau, Current Population Survey / Housing Vacancy Survey

Population Estimates 2016

For more information and an interactive map, visit:

www.metrocouncil.org/populationestimates

