

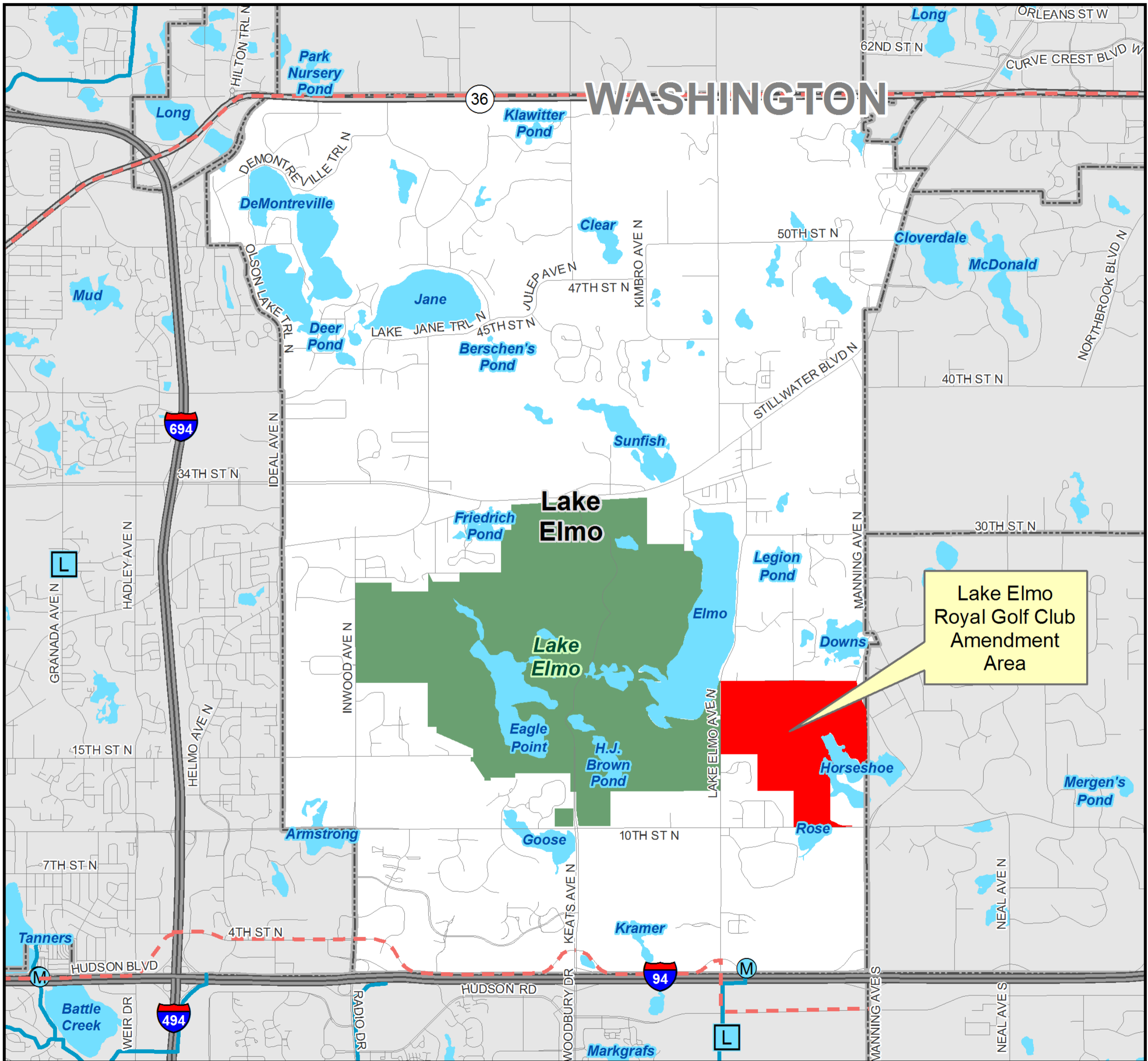
City of Lake Elmo

Royal Golf Club Comprehensive Plan Amendment

May 15, 2017

Community Development Committee

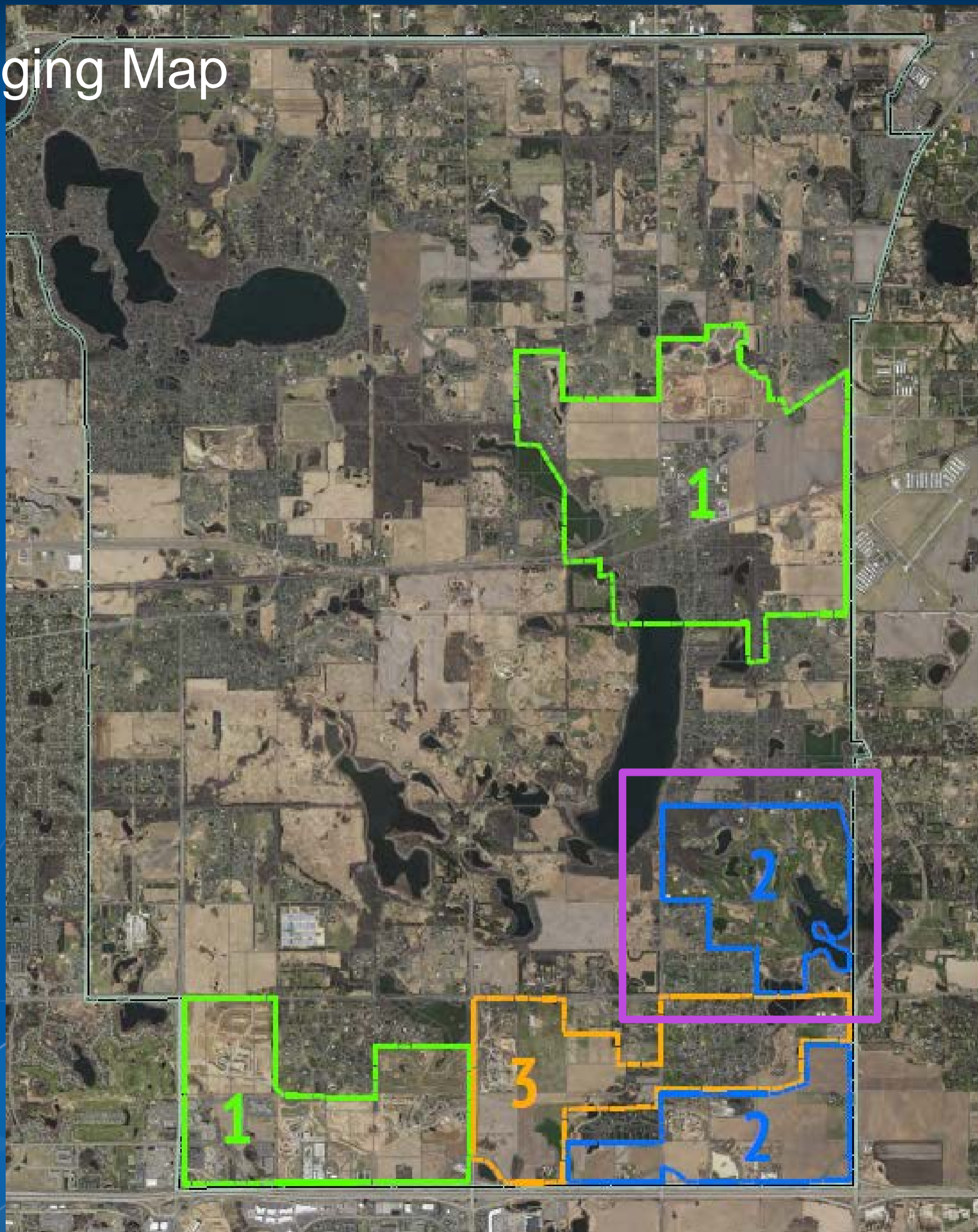




WASHINGTON

Lake Elmo
Royal Golf Club
Amendment
Area

MUSA Staging Map





Royal Golf Club



VICINITY MAP

SHEET INDEX:

- 1. Cover
- 2-7. Existing Conditions
- 8. Preliminary Plat Index
- 9-27. Preliminary Plat
- 28. Site Index
- 29-45. Preliminary Site and Utility Plan
- 46. Grading Index
- 47-59. Preliminary Grading and Erosion Control Plan
- 60-62. Details
- 63-65. Retaining Wall Profiles
- L1-L9. Landscape Plans
- T1-T25. Tree Preservation Plan
- P1-P3. Phasing Plan

BENCHMARKS

- 1) WY/DOT 030 Station #3353 (NYS&P MNS3) - Top of Control Gie Elevation = 347.04 (NAVD 88)
- 2) WY/DOT 030 Station #3307 (NYS&P MNS3) - Top of Control Gie Elevation = 333.54 (NAVD 88)



Proposed Project Concept

Findings

That the proposed amendment:

- Conforms to regional system plans
- Is consistent with Council policies
- Is compatible with the plans of adjacent/affected jurisdictions

Proposed Action

That the Metropolitan Council:

- Adopt the review record and allow the City to place the amendment into effect
- Find that the amendment does not change forecasts
- Advise the City to implement the advisory comments for land use, housing, and forecasts