

2

# Mississippi West Regional Park Master Plan Amendment and Facility Exchange

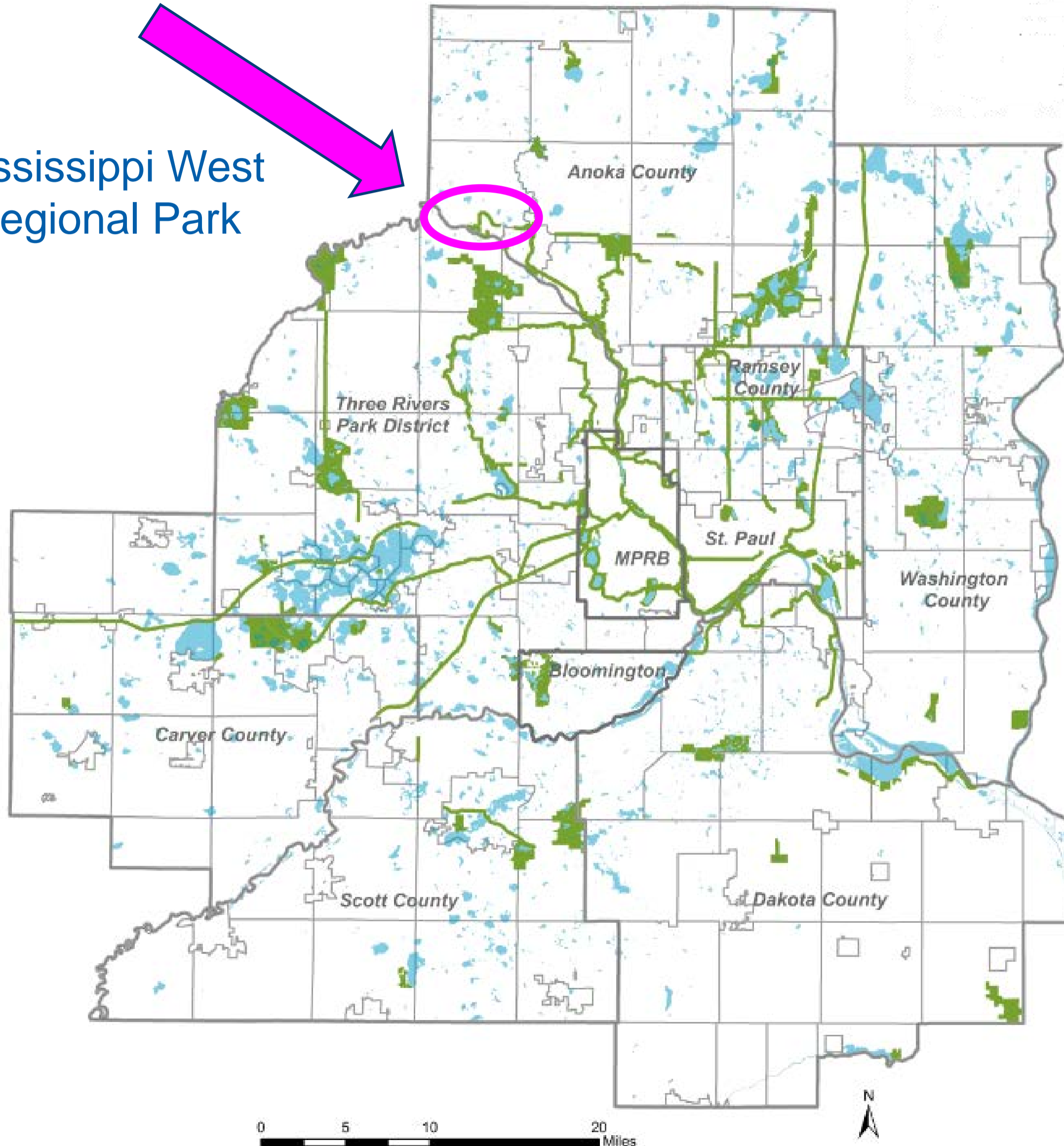
## Anoka County

Community Development Committee  
May 15, 2017



# Regional Parks System

Mississippi West  
Regional Park



# Mississippi West Regional Park

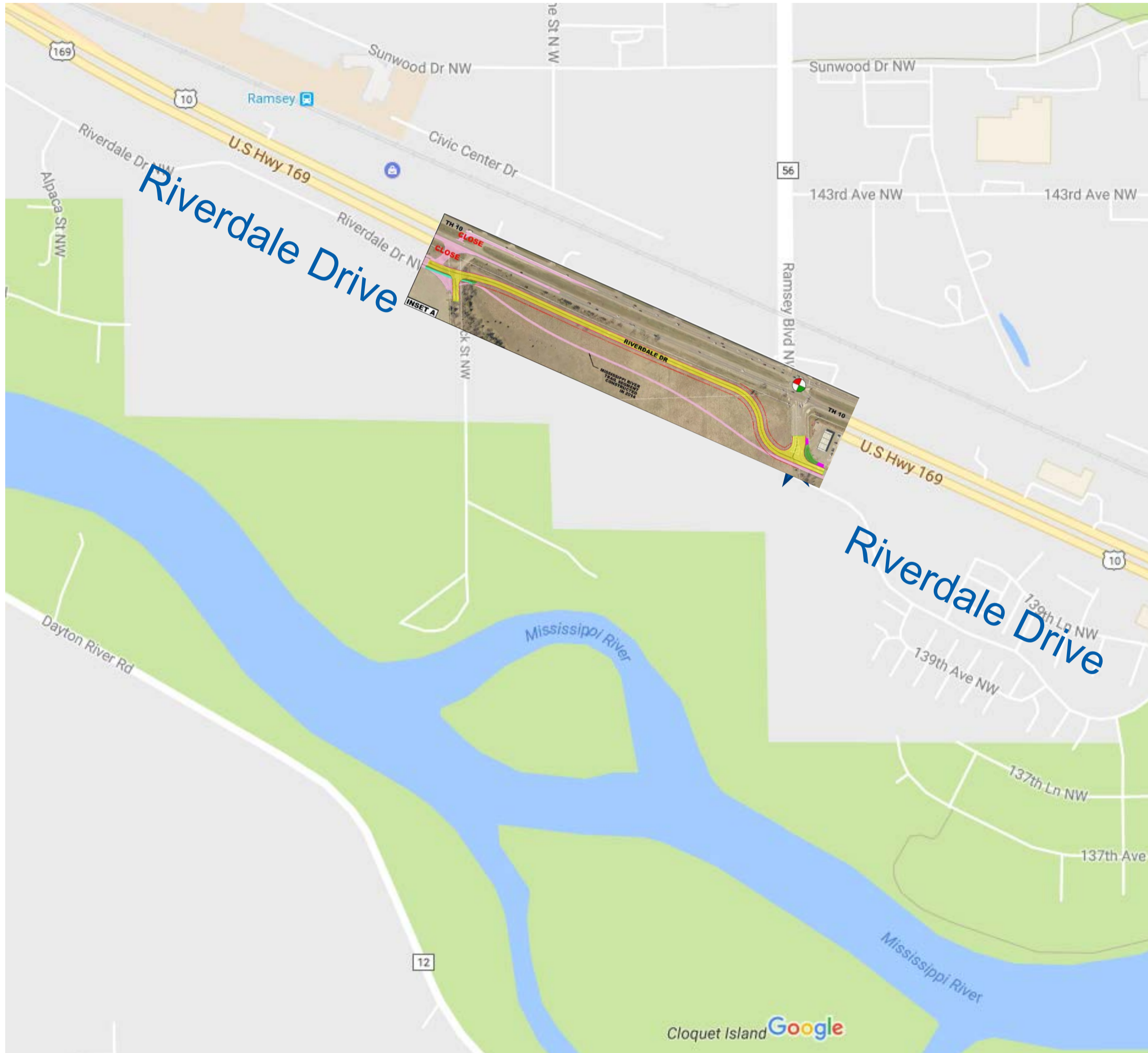


Existing Mississippi West Regional Park Boundary



Foster Island

# Riverdale Drive Extension



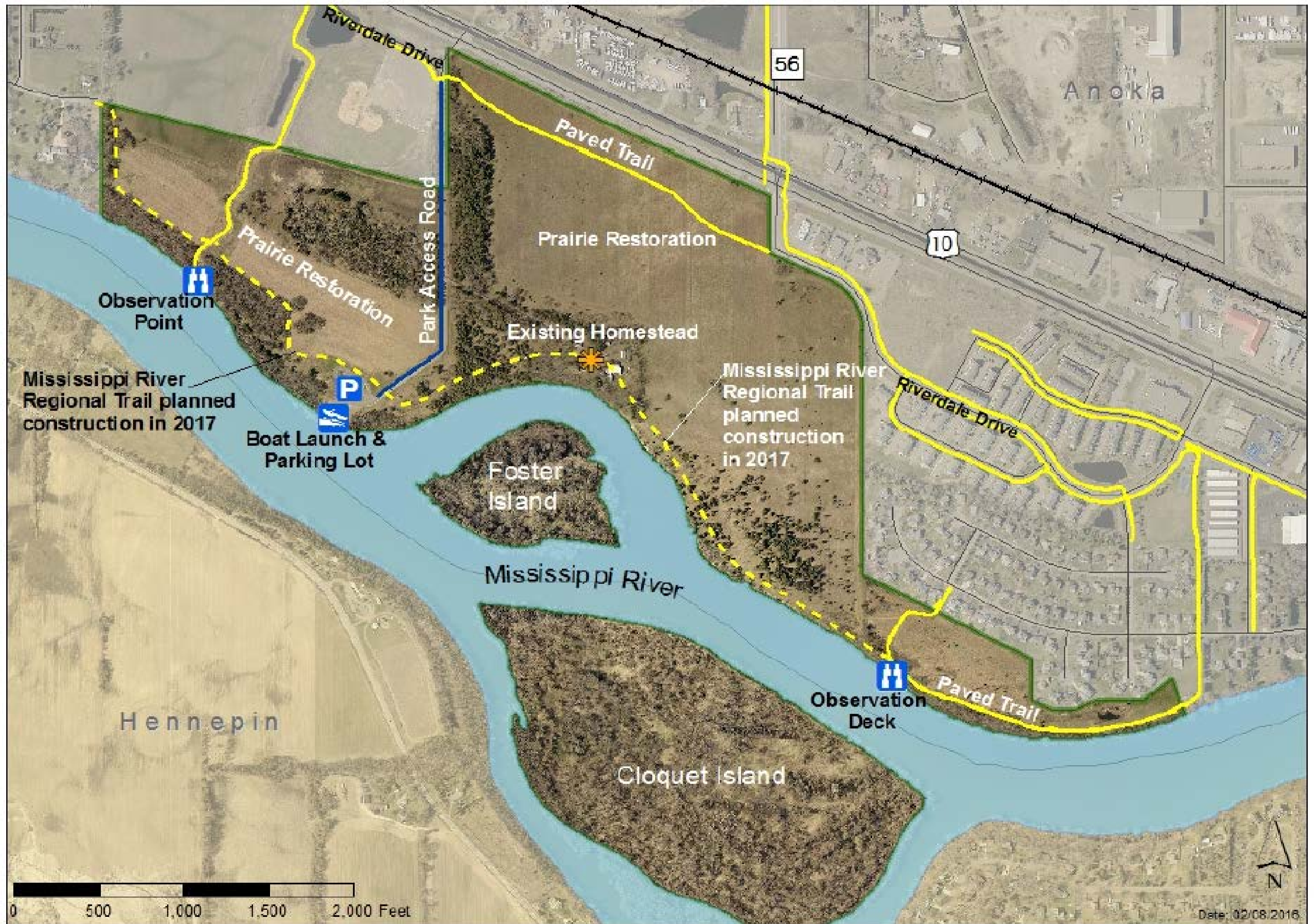
# Proposed Park Boundary



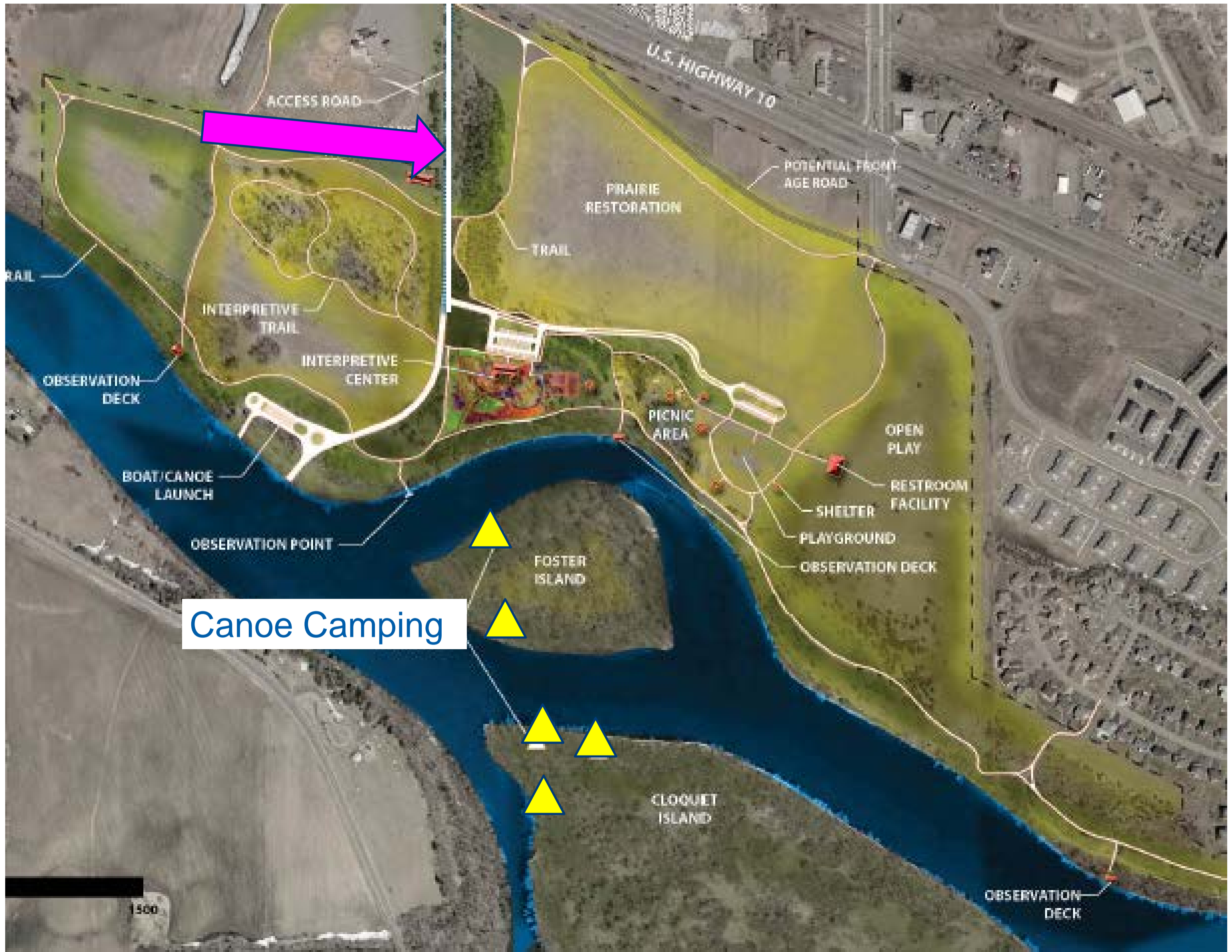
# 2011 Master Plan-Concept Plan



# Existing Development



# Master Plan Amendment





# Estimated Development Costs

Project Description	Estimated Development Cost
Roadway, trail, parking lot	\$643,000
Canoe campsites	\$10,000
Signage	\$50,000
Utility Connections	\$350,000
<b>Total Development Cost</b>	<b>\$1,053,000</b>

# 2040 Regional Parks Policy Plan

- Regional parkland will only be converted to other uses as part of an equally valuable land or facility exchange (*System Protection Strategy 2*)
- Equally valuable facility:
  - Exchange of land for facilities when recreational and/or natural resources benefits are increased as a result of the exchange

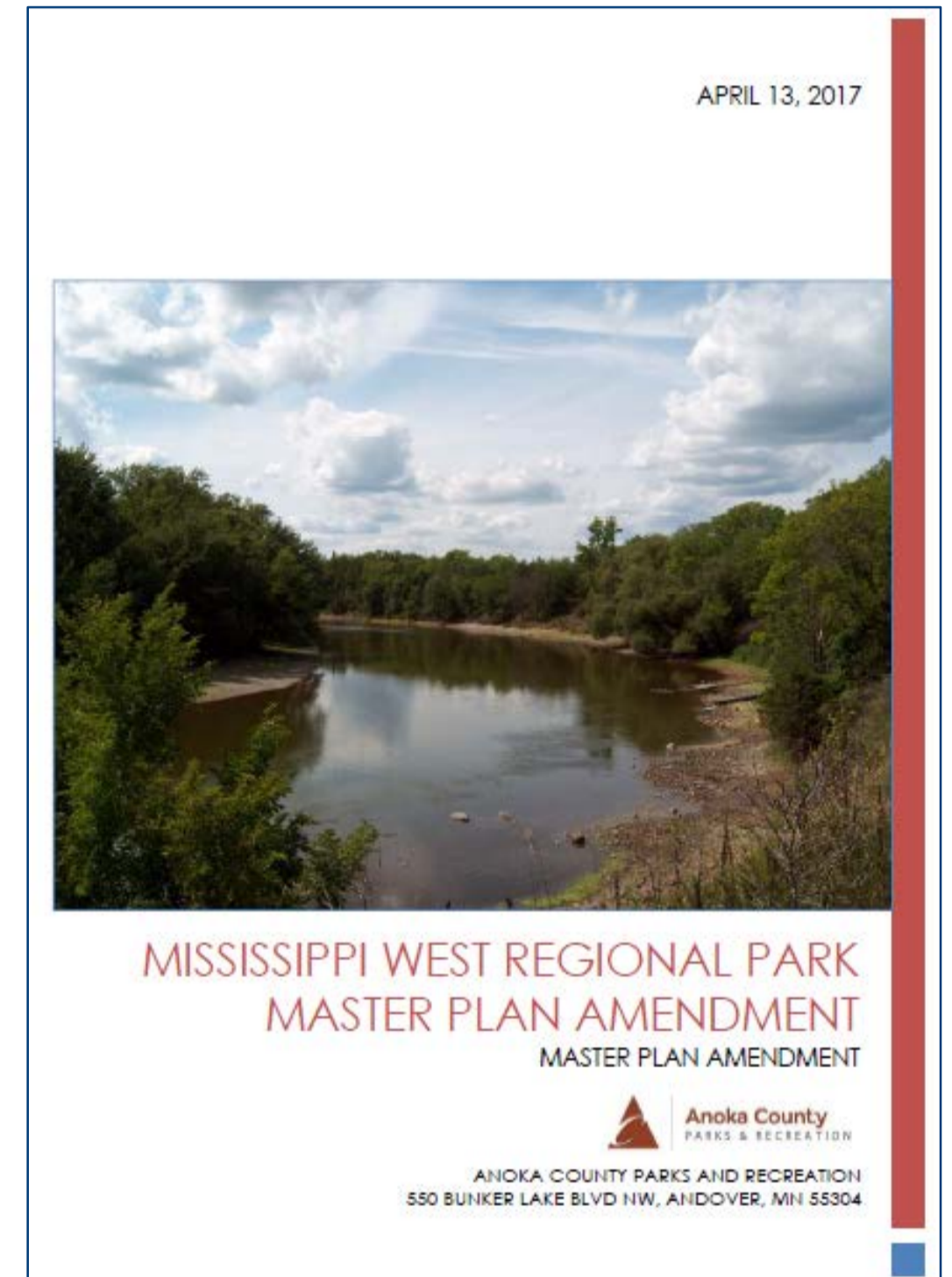
# Facility Exchange

- Does not affect Mississippi West Regional Park's:
  - Ability to meet the site standards for a regional park
  - Ability to function as originally planned
  - Environmental features
- Allows for relocation of the planned entrance road, reducing fragmentation of the park

# Recommendations

## That the Metropolitan Council:

- Approve the Mississippi West Regional Park Master Plan Amendment....



# Recommendations, continued

## That the Metropolitan Council:

- Approve conversion of 5.31 acres needed for frontage road project in exchange for investment of \$200,000 toward development of park improvements.
- Require Anoka County to submit documentation by 12/31/21 of investment and inform the County that these costs are not grant eligible expenses.