

Business Item 2018-85

West Mississippi River Regional Trail and Elm Creek Park Reserve Trail Connector Master Plan Three Rivers Park District

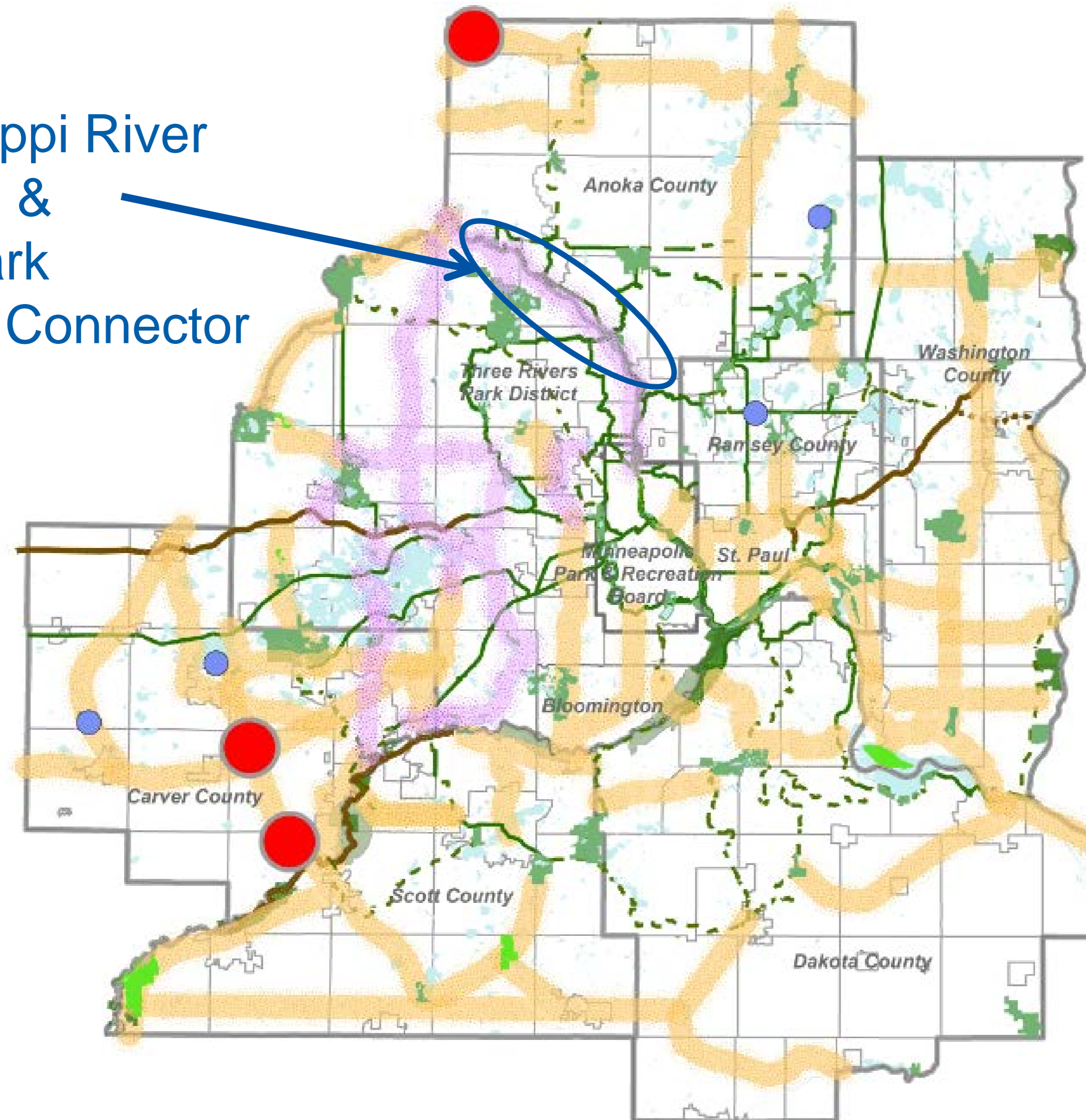
April 16, 2018

Community Development Committee



Regional Parks System Plan Map

West Mississippi River
Regional Trail &
Elm Creek Park
Reserve Trail Connector



Regional Parks-Park Reserves Special Recreation Features

- Existing
- Planned
- Boundary Adjustment
- Regional Park Search Area

Regional Trails

- Existing
- Planned
- Regional Trail Search Corridors
- 2040 System Additions

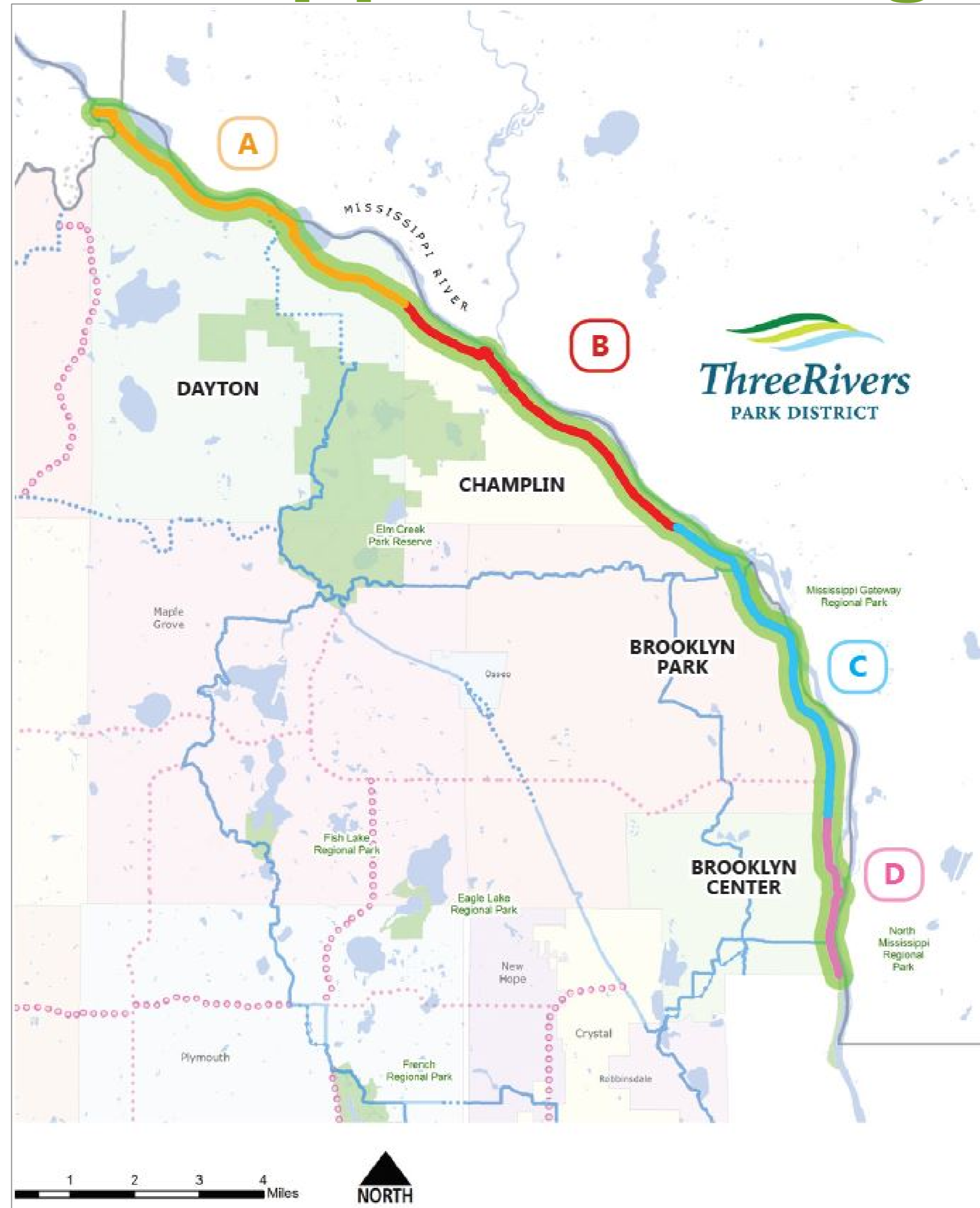
State and Federal

- State Trails
- State Lands
- Federal Lands



METROPOLITAN
COUNCIL

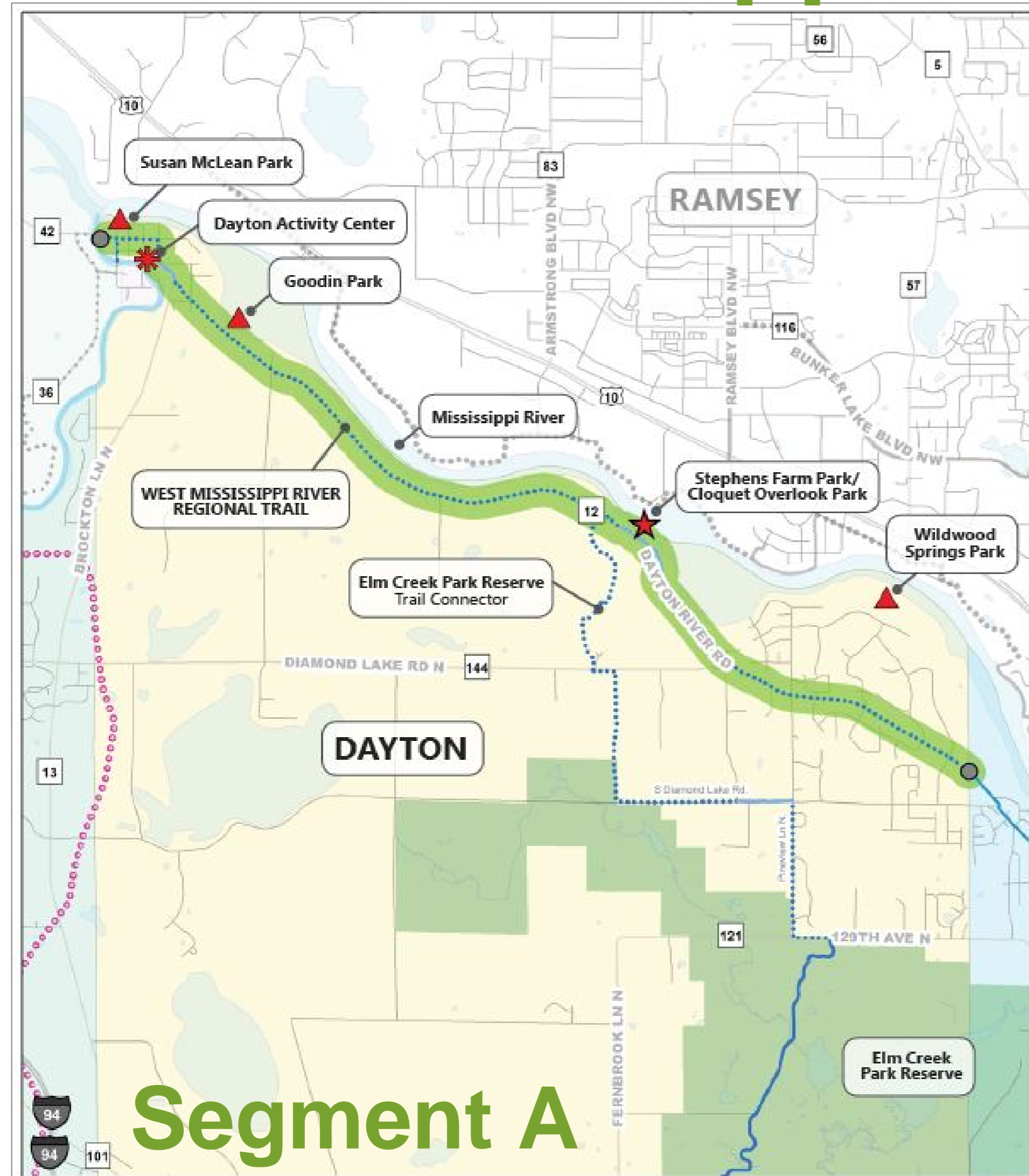
West Mississippi River Regional Trail Route



Segment A= 6.1 Miles
Segment B= 5.8 Miles
Segment C= 5.6 Miles
Segment D= 2.7 Miles

Total= 20.2 Miles

West Mississippi River Regional Trail Segments



Segment A

- Existing trail segment
- Proposed trail segment
- River Touchpoint & Trailhead
- Trailhead
- River Touchpoint



July 6, 2017 AR



Segment B

- Three Rivers, Existing
- Three Rivers, Existing Local Trail, Agreement Pending
- Three Rivers, Proposed
- Search Corridor, Existing, Met Council Approved
- Search Corridor, Proposed, Met Council Approved
- Search Corridor, Existing, Park District Concept
- Search Corridor, Proposed, Park District Concept
- Other Agency, Existing
- Other Agency, Proposed
- River Touchpoint & Trailhead
- River Touchpoint



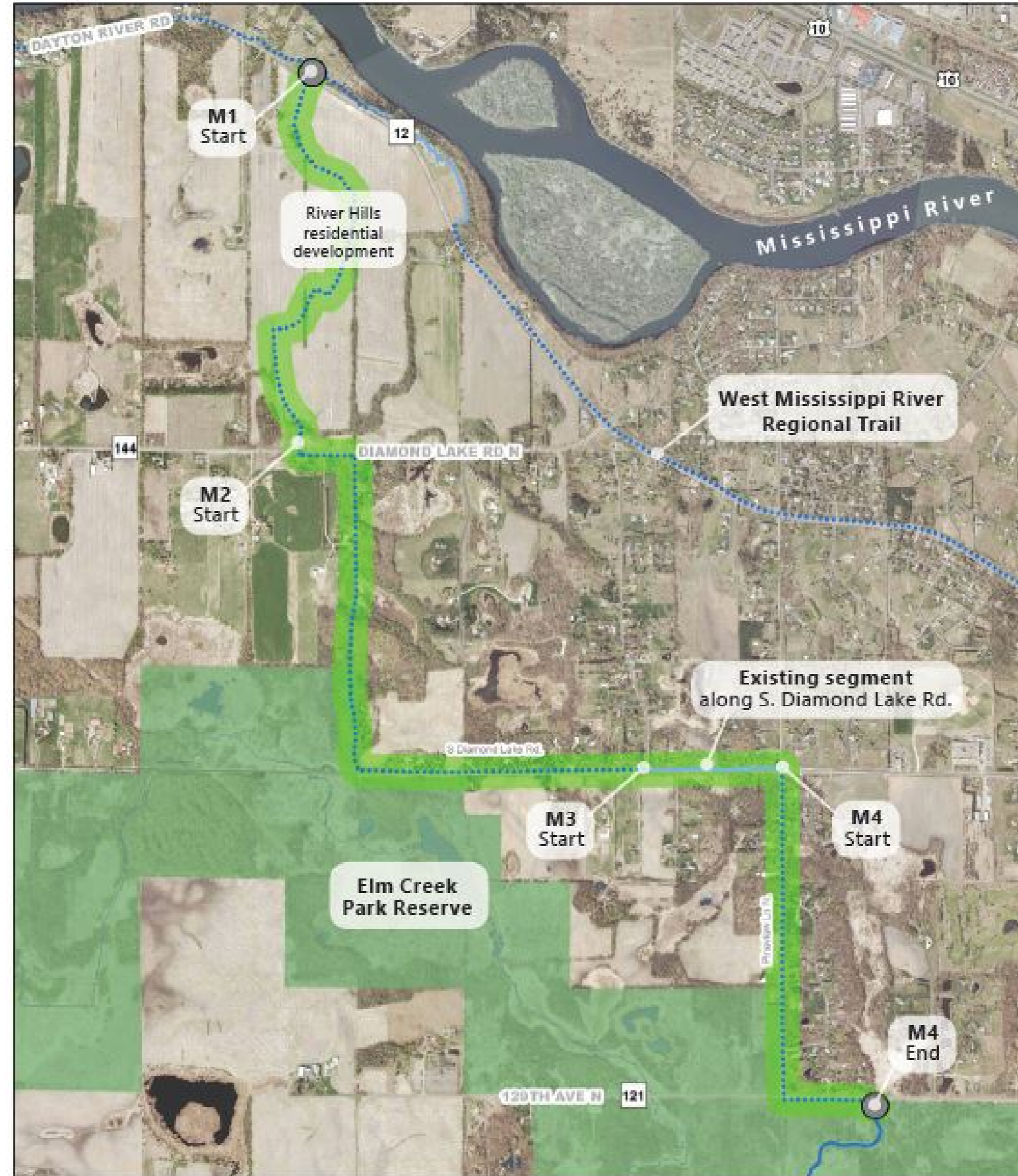
July 6, 2017 AR



West Mississippi River Regional Trail Segments



Elm Creek Park Reserve Trail Connector Segment M



Estimated Implementation Costs

Description	Estimated Cost
West Mississippi River Regional Trail	\$15,291,000
Elm Creek Park Reserve Trail Connector	\$2,619,000
TOTAL PROJECT COST	\$17,910,000

Proposed Findings

The proposed Master Plan:

- is consistent with the requirements of the *2040 Regional Parks Policy Plan*
- is consistent with Planning Strategy 1, and other Council policies.

Proposed Action

- Approve the West Mississippi River Regional Trail and Elm Creek Park Reserve Trail Connector Master Plan.
- Require that Three Rivers Park District, prior to initiating development of the regional trail, send preliminary plans to Scott Dentz, Interceptor Engineering Manager at Metropolitan Council Environmental Services, for review in order to assess the potential impacts to the regional interceptor system.
- Encourage Three Rivers Park District to continue coordination with Minnesota Department of Transportation & Hennepin County Public Works Department in the development of the Highway 252 Corridor Study and amend the Master Plan as needed to incorporate any changes in the alignment.