

Business Item 2018-302

Accept the Public Comment Report and Adopt the 2040 Regional Parks Policy Plan Update

November 19, 2018

Community Development Committee



Overview

- Public Comment Report
 - Who we heard from
 - Themes
- What Changed in the Plan
- Next Steps
- Proposed Action



Lake Elmo Park Reserve

Public Comment Report

Includes feedback received during comment period
July 26 to September 27, 2018

2018 UPDATE TO THE 2040 REGIONAL PARKS POLICY PLAN

*Public Comment Report
July 25 through September 27, 2018*



November 2018

Who we heard from

Comments were submitted by 115 individuals and organizations:

- 15 individuals at public hearing
- 10 community organizations
- 8 regional park implementing agencies
- 2 Council advisory groups
- 84 residents - written
- 7 residents - voicemail
- 1 local elected official

Reading the Public Comment Report

118 unique comments

Some comments made by multiple commenters

Comments grouped in themes

Comment text

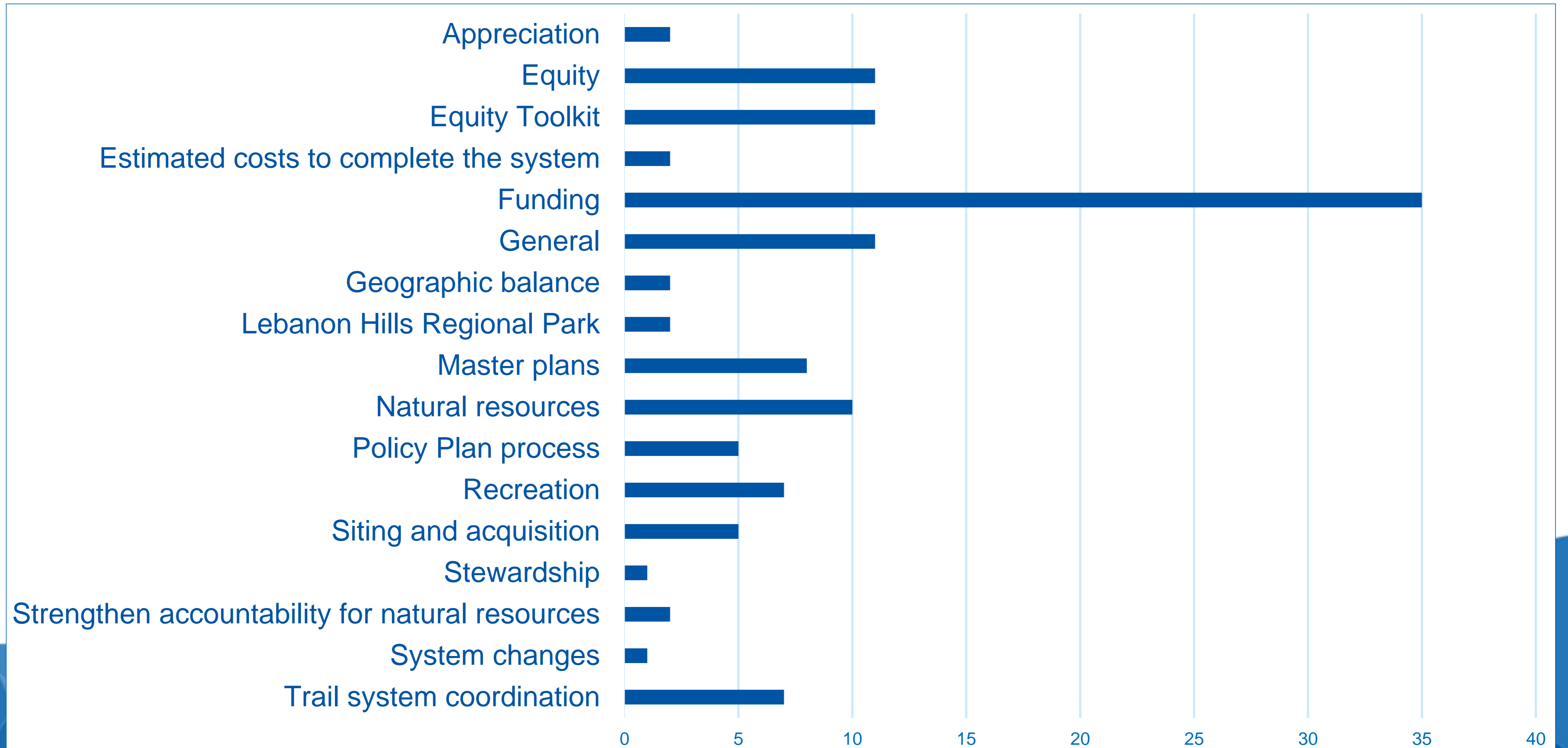
Staff response

Comment ID	Commenters	Comment Theme	Comment	Response
14	49.0; 51.0; 68.0; 84.0	Equity Toolkit	Support for increased Equity Toolkit accountability.	As the use of the Equity Toolkit increases and broadens, accountability mechanisms will be clarified. Staff looks forward to working with agency staff, equity advisors and interested communities on this pursuit.
15	65.0; 77.0; 99.0	Equity Toolkit	Support for use of the Equity Toolkit.	Met Council will continue using the Equity Toolkit to analyze, understand and improve projects. Additional assistance and guidance in using the toolkit is widely supported and will continue. Additionally, an equity analysis tool will be developed for use with the master planning stage.

Public Comment Themes

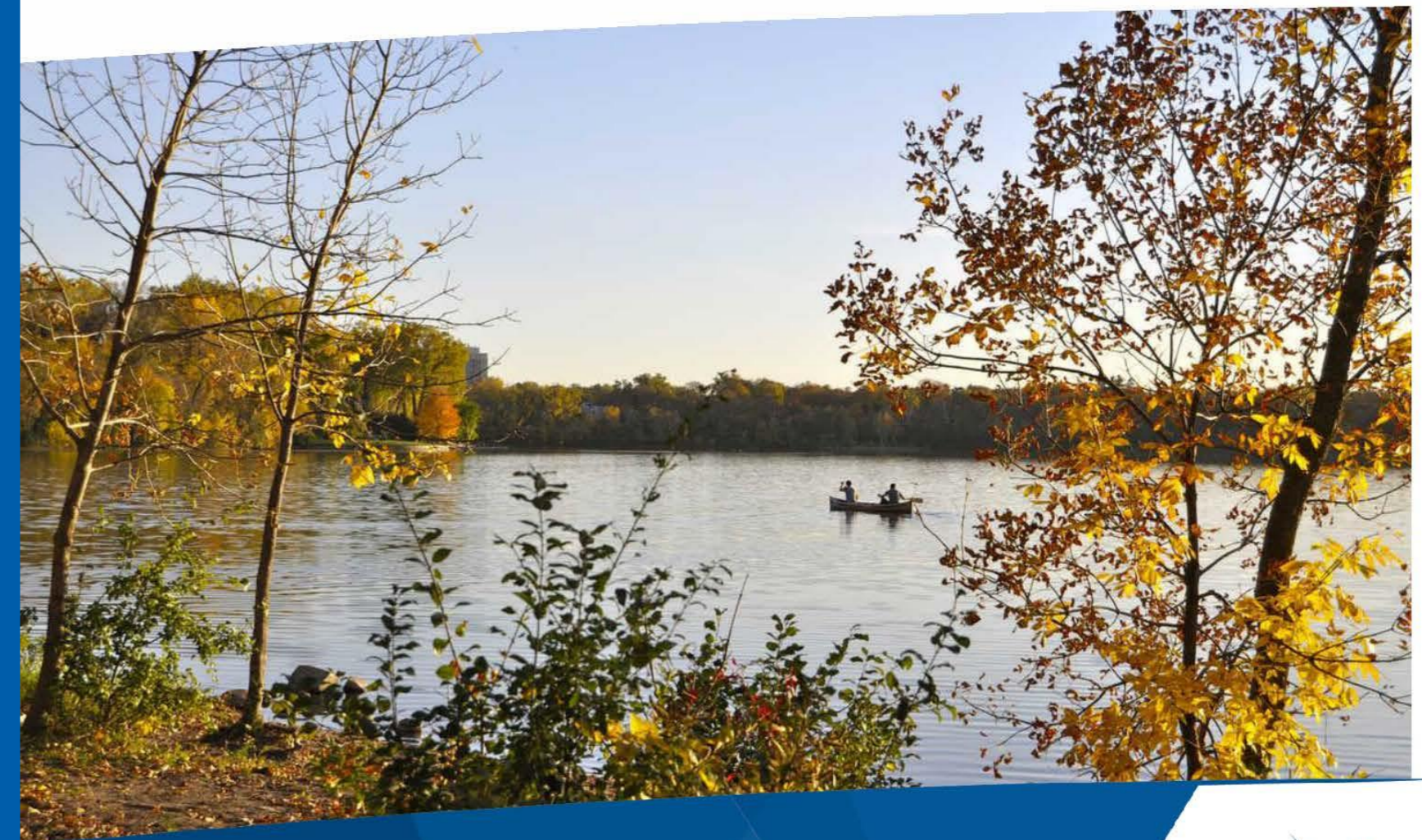
- Appreciation
- Equity
- Equity Toolkit
- Estimated costs to complete the system
- Funding
- General
- Geographic balance
- Lebanon Hills Regional Park
- Master plans
- Natural resources
- Policy Plan process
- Recreation
- Siting and acquisition
- Stewardship
- Strengthen accountability for natural resources
- System changes
- Trail system coordination

Comments in each theme



What changed as a result of public comments?

2040 REGIONAL PARKS POLICY PLAN



Update proposed for adoption November 2018

Highlights of changes

- Refinements to Activities and Facilities
 - New activity or facility in a park
 - Balance between recreation and conservation
 - Expanded description about the range of recreation opportunities
- New language around equity
 - Returned to “Strengthen equitable use”
 - New equity analysis in master planning
- New 2019-2022 Work Plan summarizing commitments



Rice Creek Chain of Lakes Park Reserve

Changes in Chapter 2

Overview of the Regional Parks System

- **Strengthened climate change language, p.11**
 - Added commitment to proactively work through planning and asset management.
 - Added examples of actions that enhance storm water management, urban heat island mitigation, biodiversity, and air and water quality.
- **Added commitment to collaboratively develop indicators, p. 21**

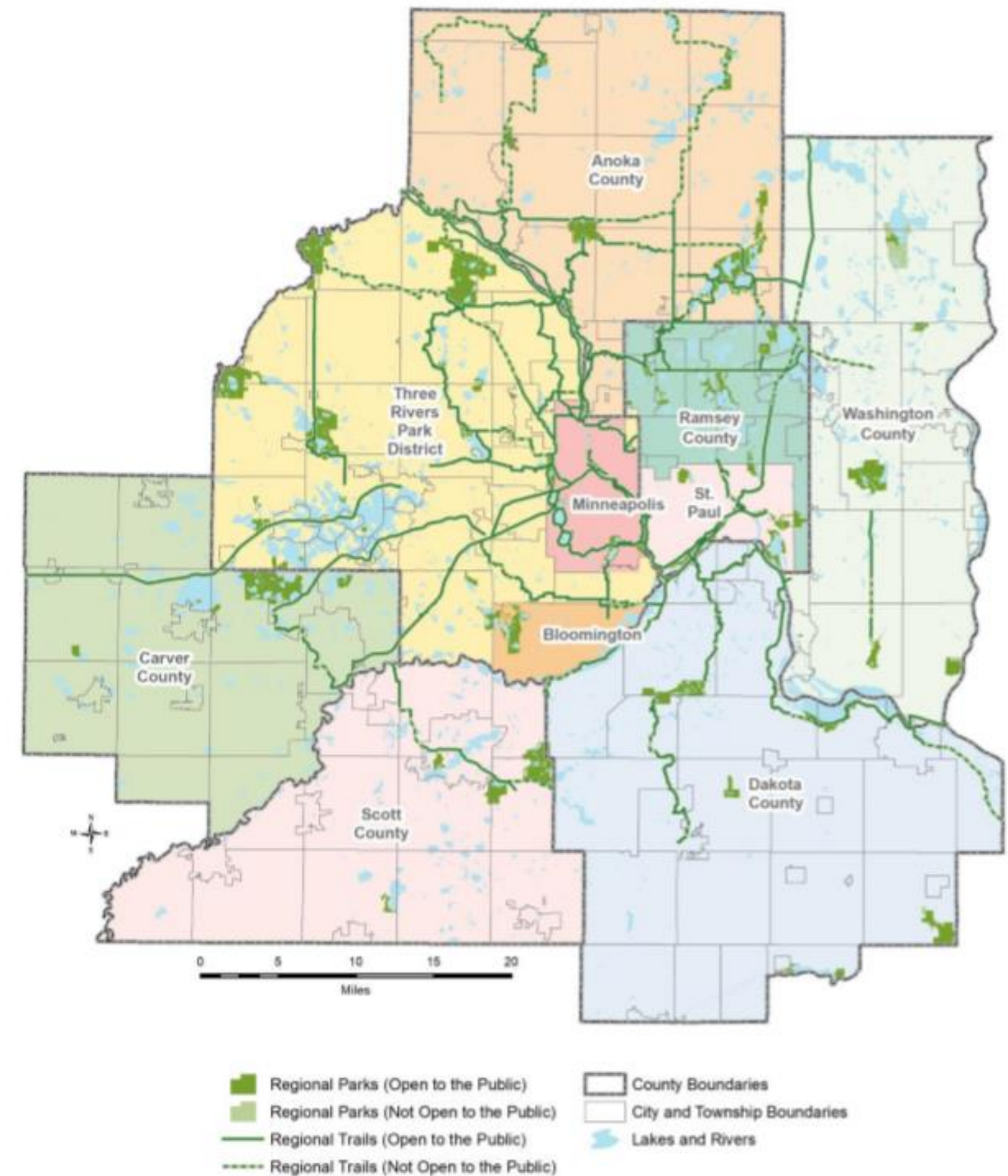
Possible areas include

 - Strengthening equitable usage
 - Managing natural resources
 - Enhancing climate resilience

Changes in Chapter 3 System Plan

- **Corrected System Plan Map, pp. 25-58**
 - Corrected and updated system plan lists to reflect what we learned from public comments
 - Added new labeling system to maps and tables that eliminates redundancy

Figure 3-6. Existing Regional Parks System Facilities (2018)



Changes in Chapter 5

Planning

- **Added equity analysis requirement to master planning, p. 71**
 - To be developed through a collaborative process to examine who benefits and who is affected by the proposed master plan.
- **Added Acquisition Master Plan section, p. 75**
 - Clarifies how regional park implementing agencies, in certain circumstances, may acquire land not currently designated as part of the system.
 - Requires plans to be approved by the Council prior to acquisition.
 - Reflects current practice but is not well documented in the Policy Plan.

Changes in Chapter 6

System Protection

- **Placement of Utilities, p. 87**
 - Clarified language for placing utility easements on parkland to reflect current practice



Cottage Grove Ravine Regional Park

Changes in Chapter 7

Recreation Activities and Facilities

- **Balance conservation and recreation, pp. 88-91**
 - Clarified commitment to develop performance criteria for secondary or support activities
 - Clarified process for adding new activity to Regional Parks System
- **Range of recreation opportunities, pp. 91-92**
 - Added contextual information about balancing user experiences
 - Explore potential benefits of a classification system as part of system addition discussion
- **Equitable Use, p. 92**
 - Returned strategy language to “Strengthen equitable use”
- **Trail System Coordination, pp. 95-99**
 - Reinforced commitment to coordinate RBTN and Regional Trails

Changes in Chapter 8

Finance

- **Equity considerations, pp. 104-105**
 - Added reference to Planning Strategy 1, equity analysis tool, connecting public engagement processes for master planning with new equity analysis tool, defining who benefits
 - After significant deliberation, removed Council project prioritization from funding decisions, leaving responsibility for prioritizing projects and budgeting to locally elected officials
- **Estimated Costs to Complete the System, pp. 108-117**
 - Refined estimated cost model, resulting in a lower total system build-out cost of \$2.1 billion
 - Aligned estimated cost language in Plan with September 2018 information item

Changes in Chapter 9

Work Plan

2019-2022 Work plan, p. 118

- Added work plan to summarize commitments made by the Council in the Policy Plan



Lake Phalen Regional Park

Steps for Plan Adoption

- November 8, 2018: Approved by Metropolitan Parks and Open Space Commission
- November 19, 2018: Community Development Committee
- November 28, 2018: Metropolitan Council



Minnehaha Regional Park

Proposed Action

- Accept the Public Comment Report on the draft update to the *2040 Regional Parks Policy Plan*; and
- Adopt the revised final update of the *2040 Regional Parks Policy Plan*.



METROPOLITAN
C O U N C I L