

City of Marine on St. Croix – District 12

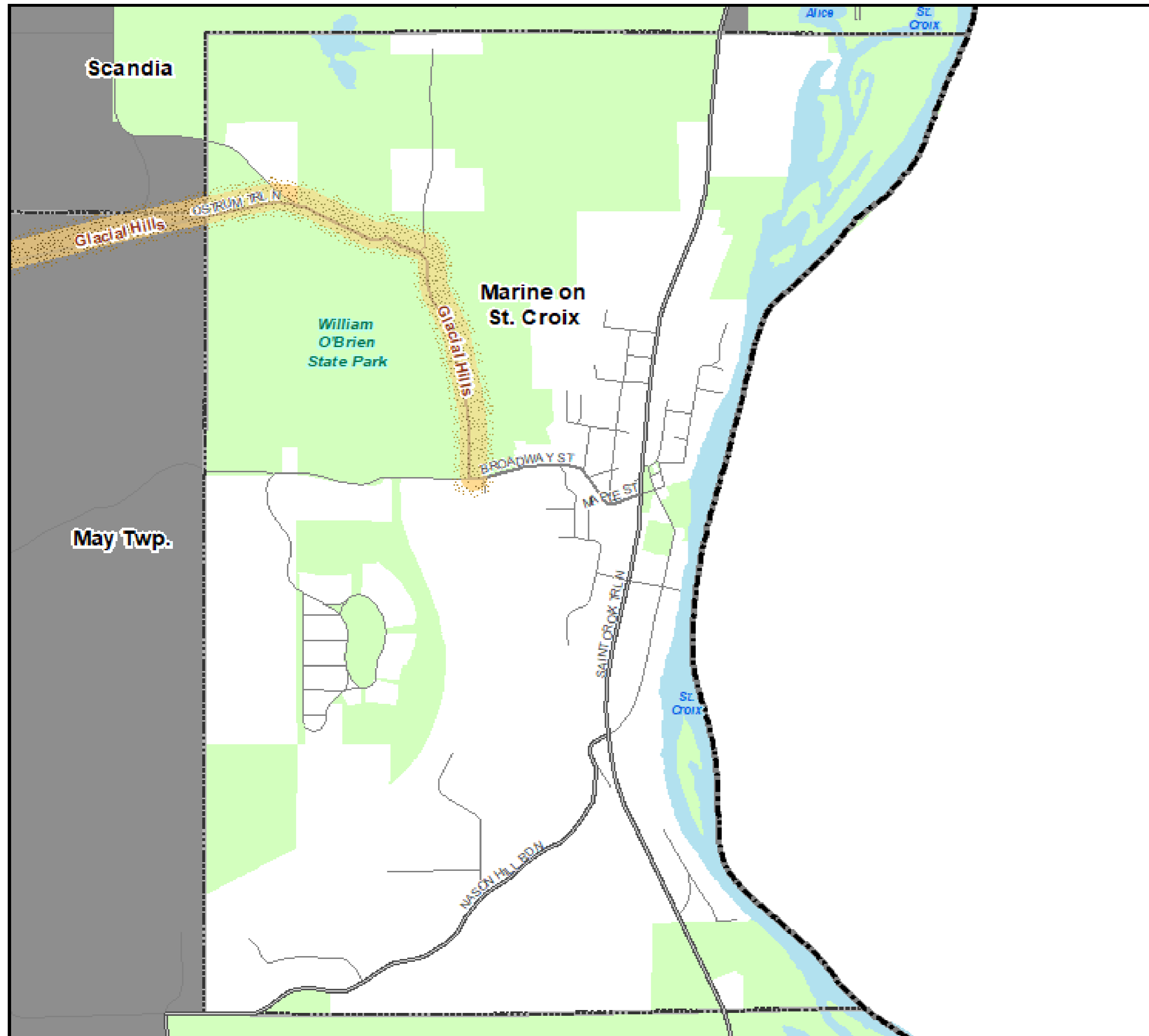
# 2040 Comprehensive Plan

July 1, 2019

Community Development Committee



# Regional Systems



## Regional Systems

### Transportation

#### Transitways

2040 Transportation System Policy - adopted January 2015

- Existing
- Planned Current Revenue Scenario
- Planned Current Revenue Scenario - CTIB\* Phase 1 Projects
- Potential Increased Revenue Scenario

#### Regional Highway System

- Existing Principal Arterials
- Planned Principal Arterials
- Existing Minor Arterials
- Planned Minor Arterials
- Existing Other Arterials
- Planned Other Arterials

### Regional Park Search Areas and Regional Trail Search Corridors

- Boundary Adjustment
- Search Area
- Regional Trail Search Corridors

- Local Streets
- Existing State Trails
- Other Parks, Preserves, Refuges and Natural Areas

### Recreation Open Space

#### Regional Parks

- Existing (Open to Public)
- In Master Plan (Not Open to Public)
- Planned Units

#### Regional Trails

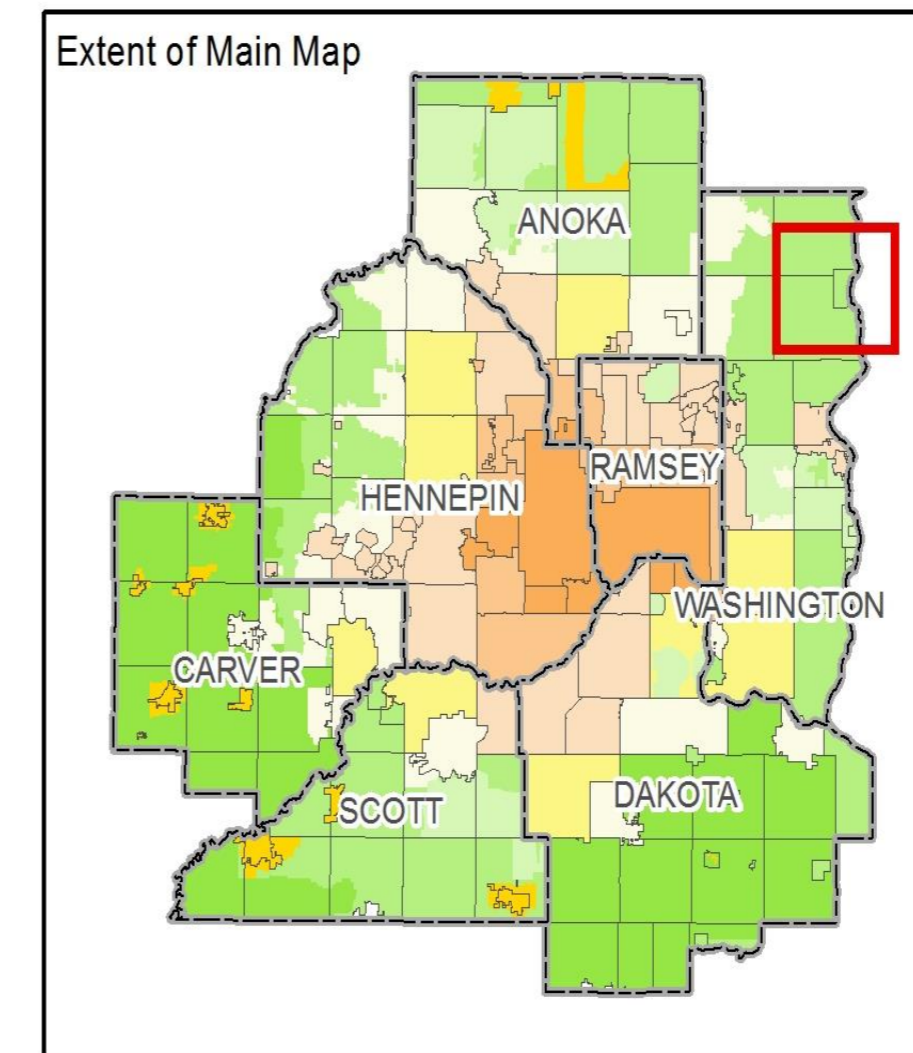
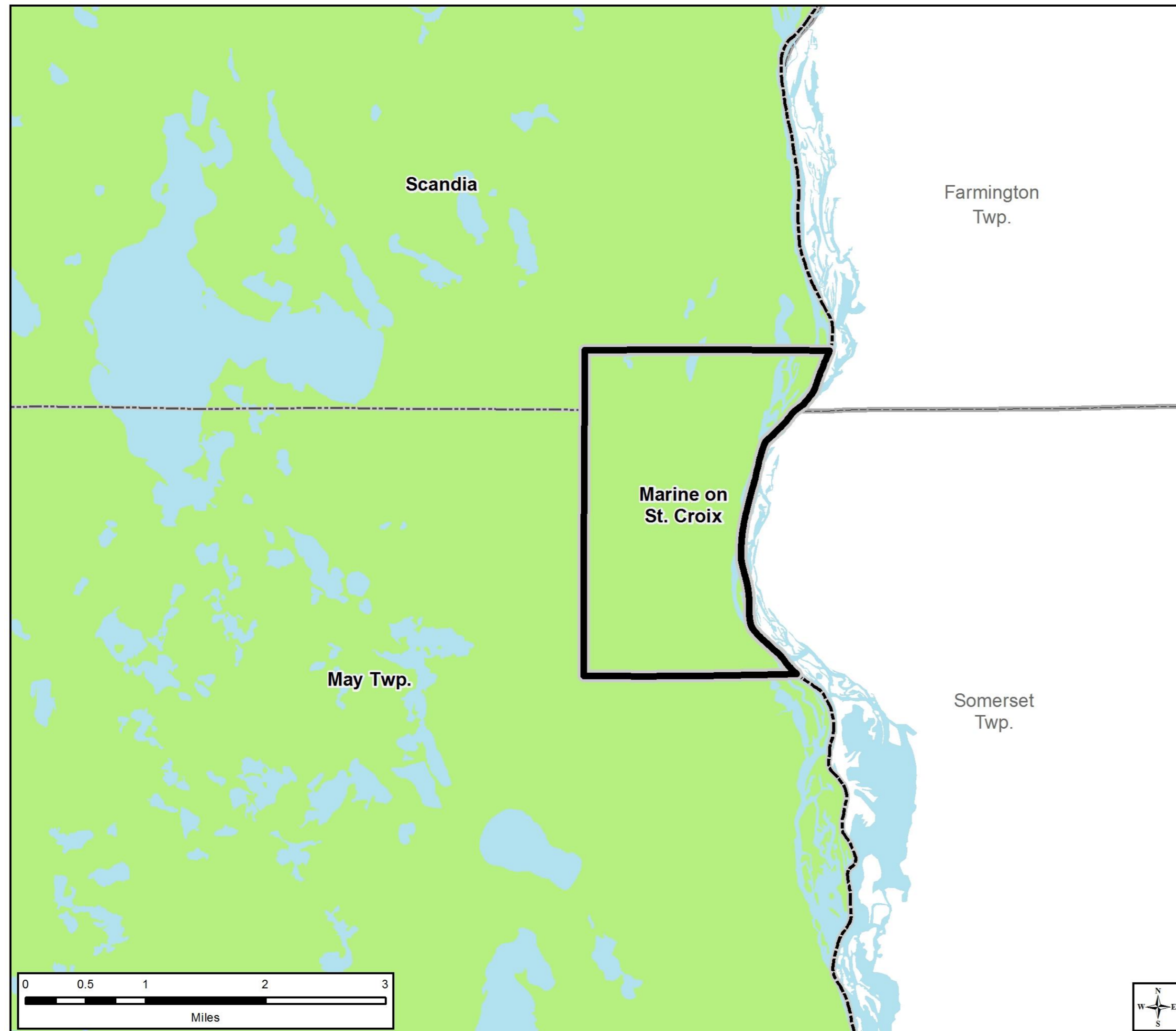
- Existing (Open to Public)
- Existing (Not Open to Public)
- Planned

### Wastewater

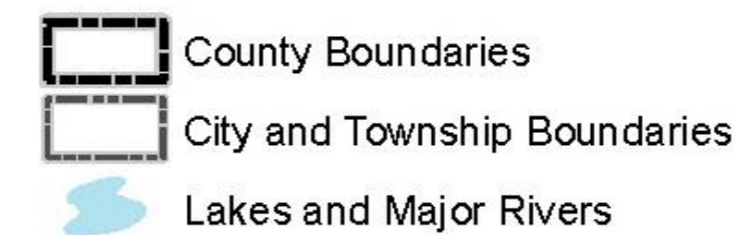
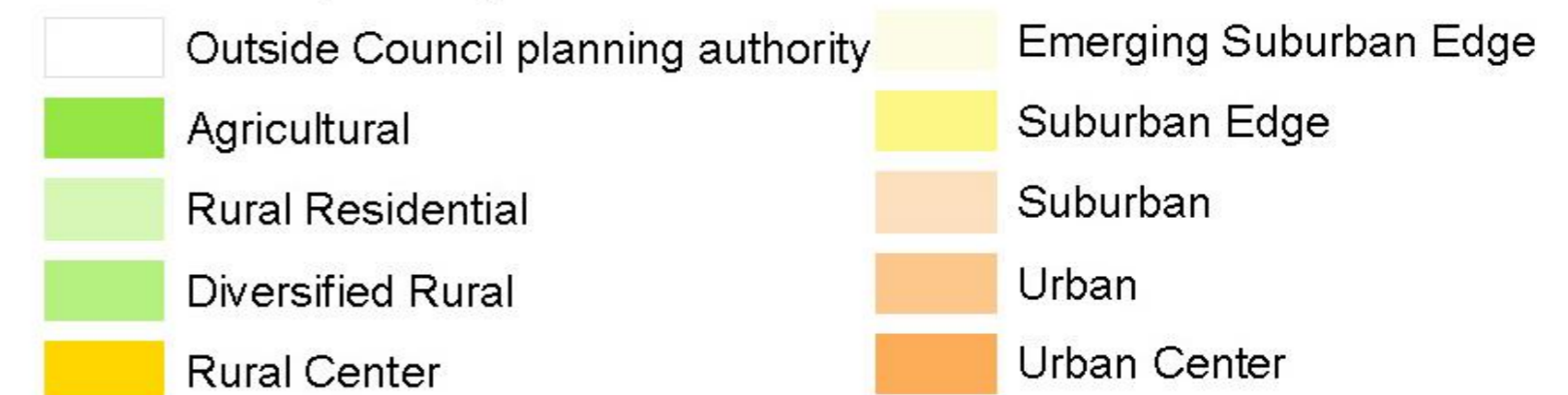
- Meters
- Lift Stations
- MCES Interceptors
- MCES Treatment Plants

\* Counties Transit Improvement Board (CTIB)

# Community Designation



## Community Designations



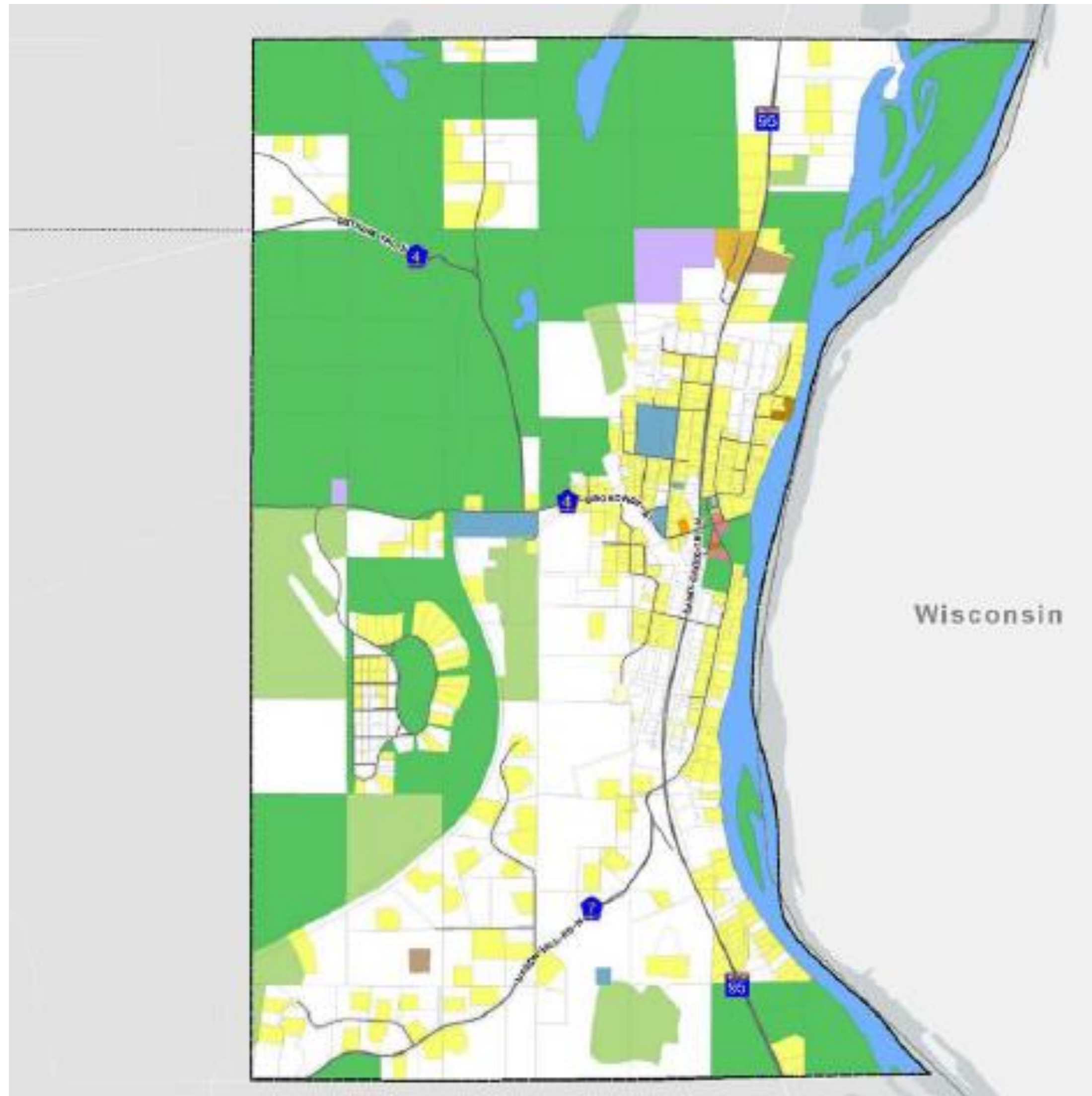


# Forecasted Growth

Table 1. City of Marine on St. Croix Forecasts

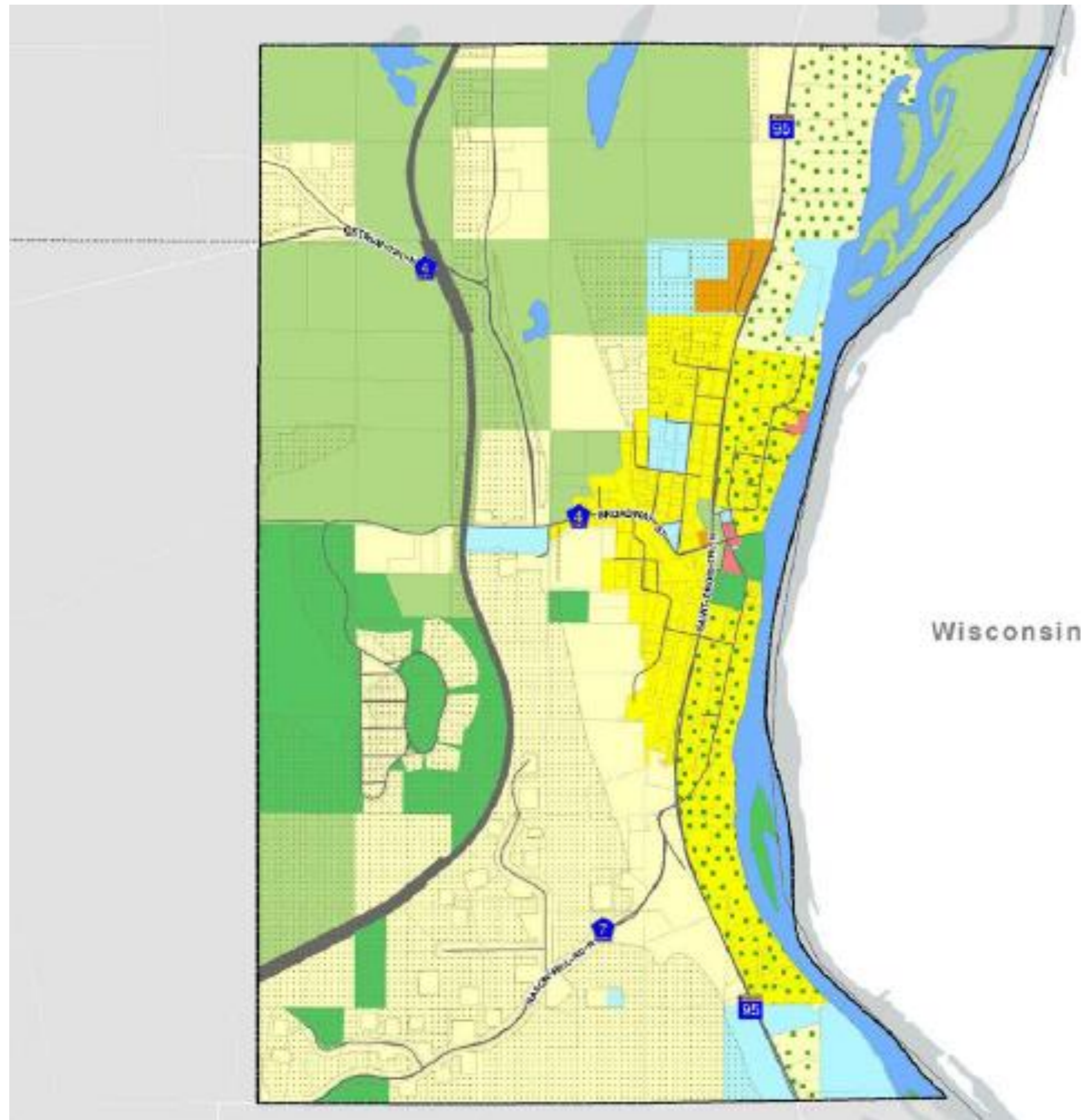
	Census	Estimated	Council Forecasts		
	2010	2016	2020	2030	2040
Population	689	682	740	840	940
Households	302	300	340	400	450
Employment	124	94	140	150	160

# Existing Land Use





# 2040 Future Land Use



# Proposed Findings

That the Plan:

- Conforms to Metropolitan system plans
- Consistent with Council policies
- Compatible with the plans of adjacent local governmental units and affected jurisdictions



# Meeting Schedule

- Metropolitan Council on Wednesday, July 10



# Proposed Action

1. Authorize the City of Marine on St. Croix to place its 2040 Comprehensive Plan into effect.
2. Advise the City to implement the advisory comments in the Review Record for Surface Water Management.

# Questions

