

Business Item 2019-128

Hidden Falls – Crosby Farm Regional Park Master Plan City of Saint Paul

June 17, 2019

Community Development Committee



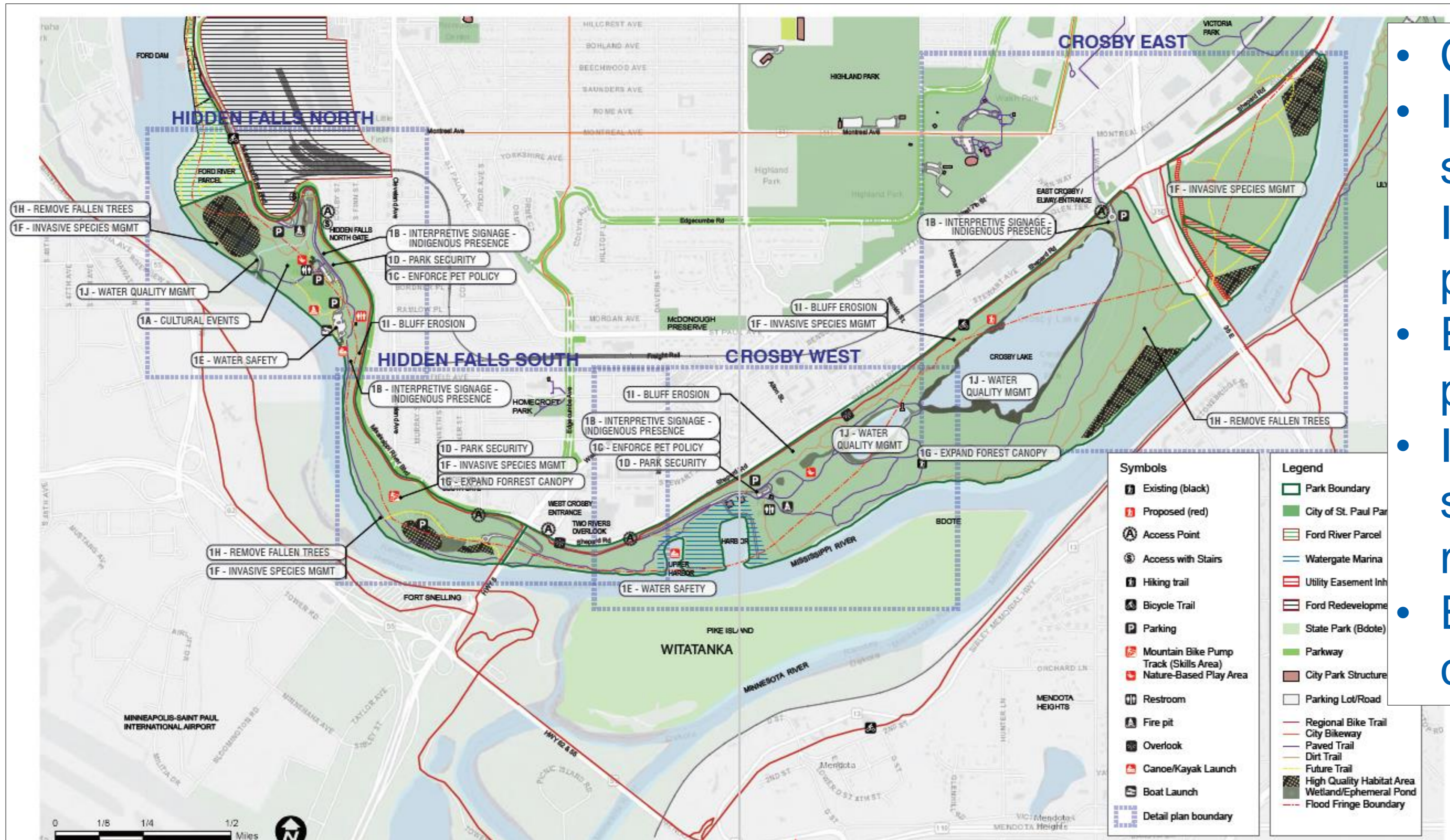
Hidden Falls and Crosby Farm regional parks

- Five miles of Mississippi River frontage
- Bdote
- Mississippi Flyway
- Popular activities



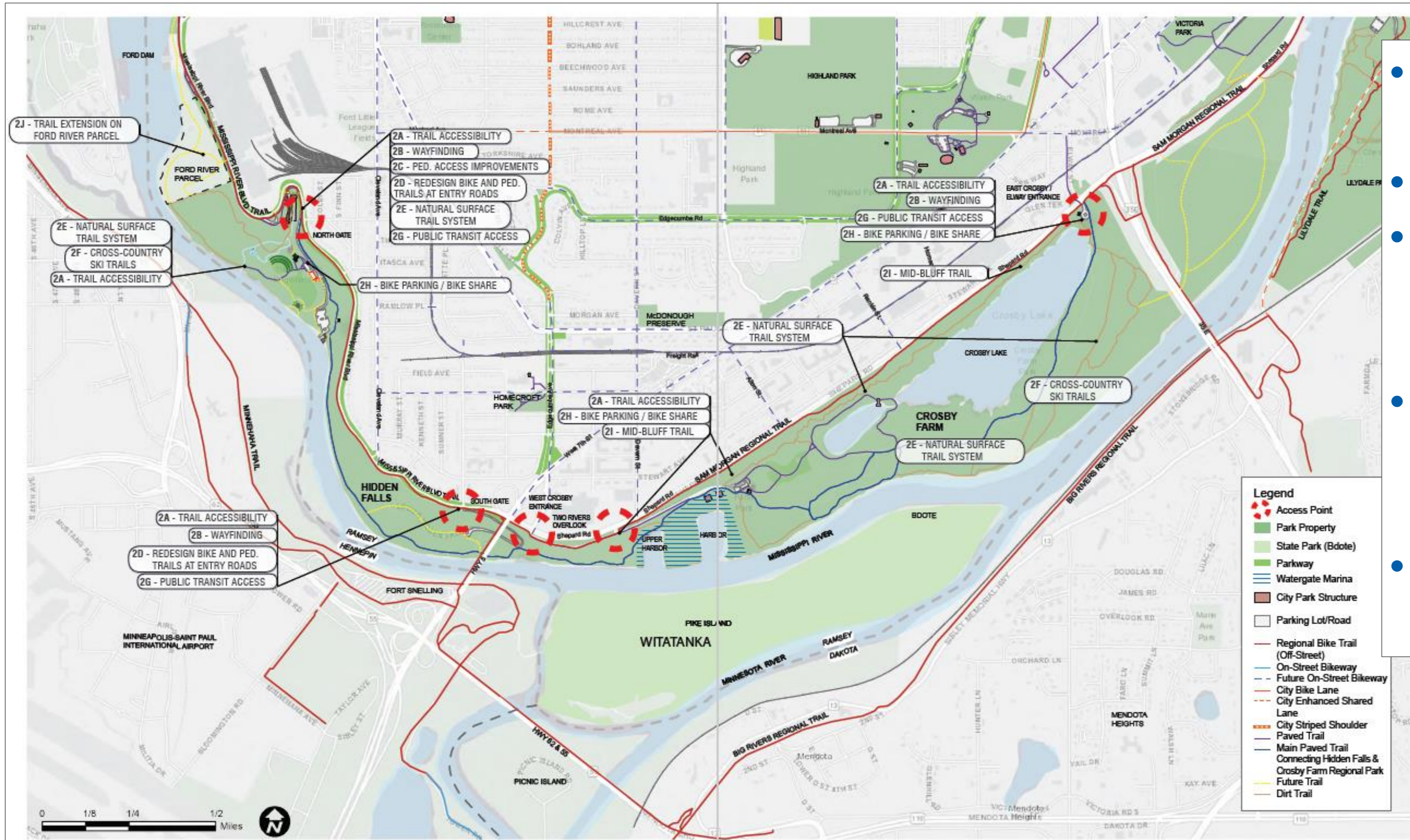
Hidden Falls and Crosby Farm regional parks

Development Concept – Parkwide Recommendations



- Cultural events
- Interpretive signage – Indigenous presence
- Enforce pet policy
- Invasive species management
- Expand forest canopy

Development Concept – Trails and Connectivity Recommendations



- Trail accessibility
- Wayfinding
- Pedestrian access improvements
- Natural surface trail system
- Bike parking/ bike share



Estimated Costs

#	Location/focus area	Estimated costs
1	Parkwide Recommendations	\$3,811,000
2	Trails and Connectivity Improvement	\$3,045,000
3	Hidden Falls North	\$7,788,000
4	Hidden Falls South	\$840,000
5	West Crosby Farm	\$1,275,000
6	East Crosby Farm	\$830,000
	Total estimated cost	\$17,589,000



Accessibility

- Areas surrounding the regional parks are considered “low-mobility”
- Accessibility assessments and improvements are proposed in the master plan.
- Improved wayfinding
- Pedestrian access improvements



Rationale for Proposed Action

- The Hidden Falls – Crosby Farm Regional Park Master Plan is consistent with the requirements of the:
 - *2040 Regional Parks Policy Plan*, including Planning Policy Strategy 1
 - Other Council policies

Proposed Action

That the Metropolitan Council:

- Approve the Hidden Falls – Crosby Farm Regional Park Master Plan.
- Require that the City of Saint Paul, prior to initiating any new development of the regional park, send preliminary plans to the Engineering Services Assistant Manager at the Metropolitan Council's Environmental Services Division, for review in order to assess the potential impacts to the regional interceptor system.