

City of Lauderdale – District 10

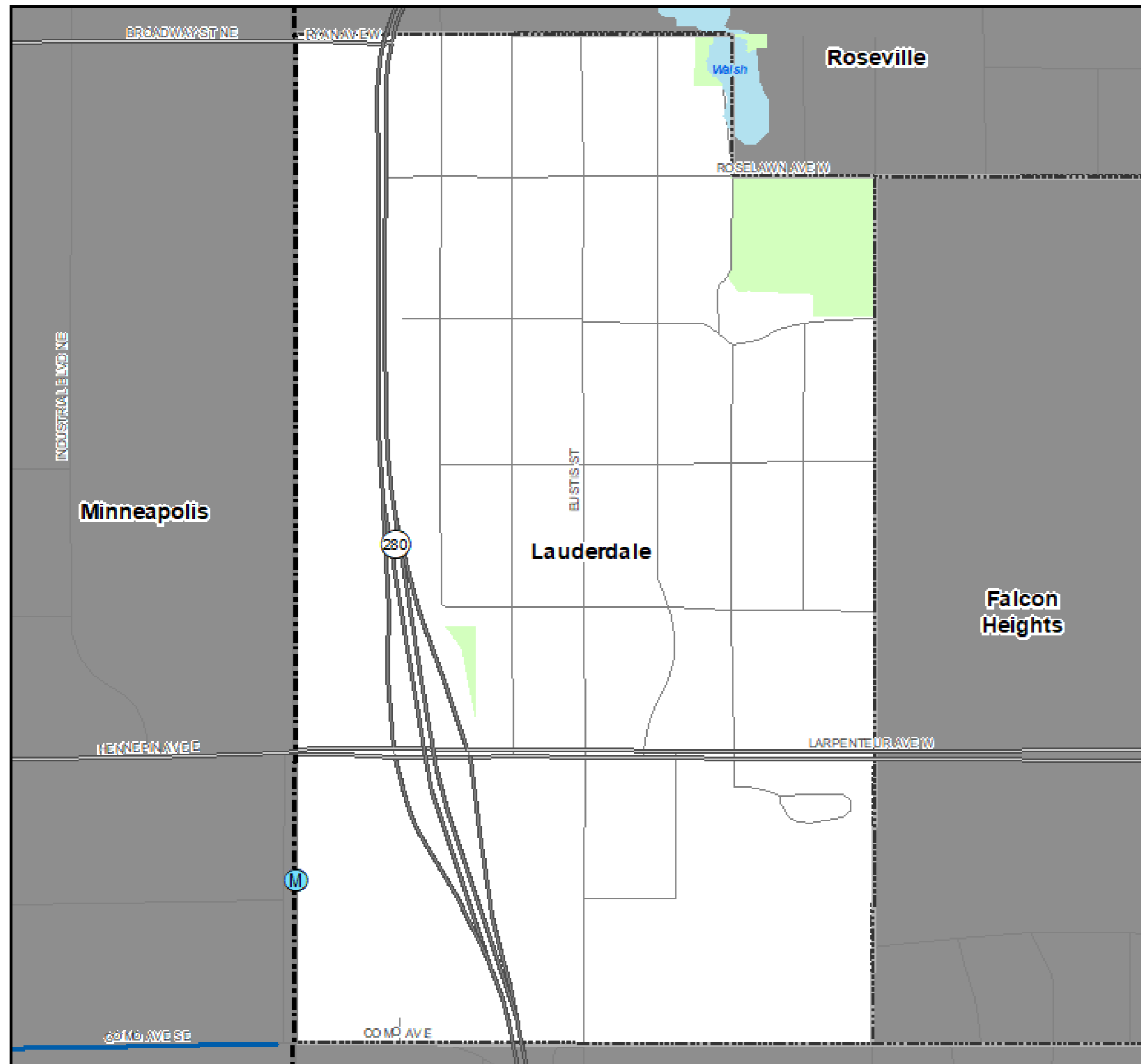
2040 Comprehensive Plan

September 16, 2019

Community Development Committee



Regional Systems



Regional Systems

Transportation

Transitways
2040 Transportation System Policy - adopted January 2015

- Existing
- Planned Current Revenue Scenario
- Planned Current Revenue Scenario - CTIB* Phase 1 Projects
- Potential Increased Revenue Scenario

Regional Highway System

- Existing Principal Arterials
- Planned Principal Arterials
- Existing Minor Arterials
- Planned Minor Arterials
- Existing Other Arterials
- Planned Other Arterials

Recreation Open Space

- Regional Parks**
- Existing (Open to Public)
 - In Master Plan (Not Open to Public)
 - Planned Units
- Regional Trails**
- Existing (Open to Public)
 - Existing (Not Open to Public)
 - Planned

Wastewater

- Meters
- Lift Stations
- MCES Interceptors
- MCES Treatment Plants

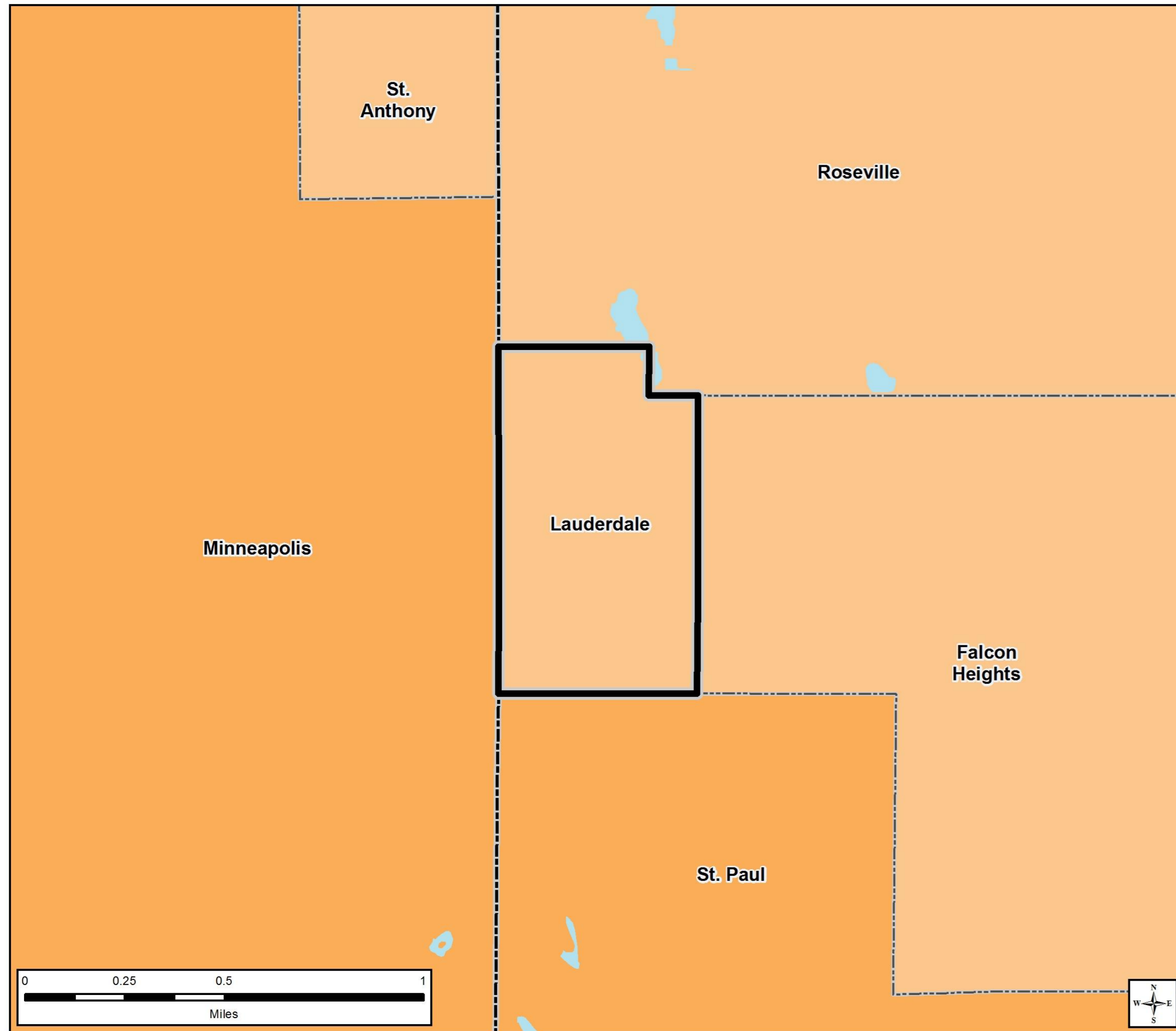
Regional Park Search Areas and Regional Trail Search Corridors

- Boundary Adjustment
- Search Area
- Regional Trail Search Corridors

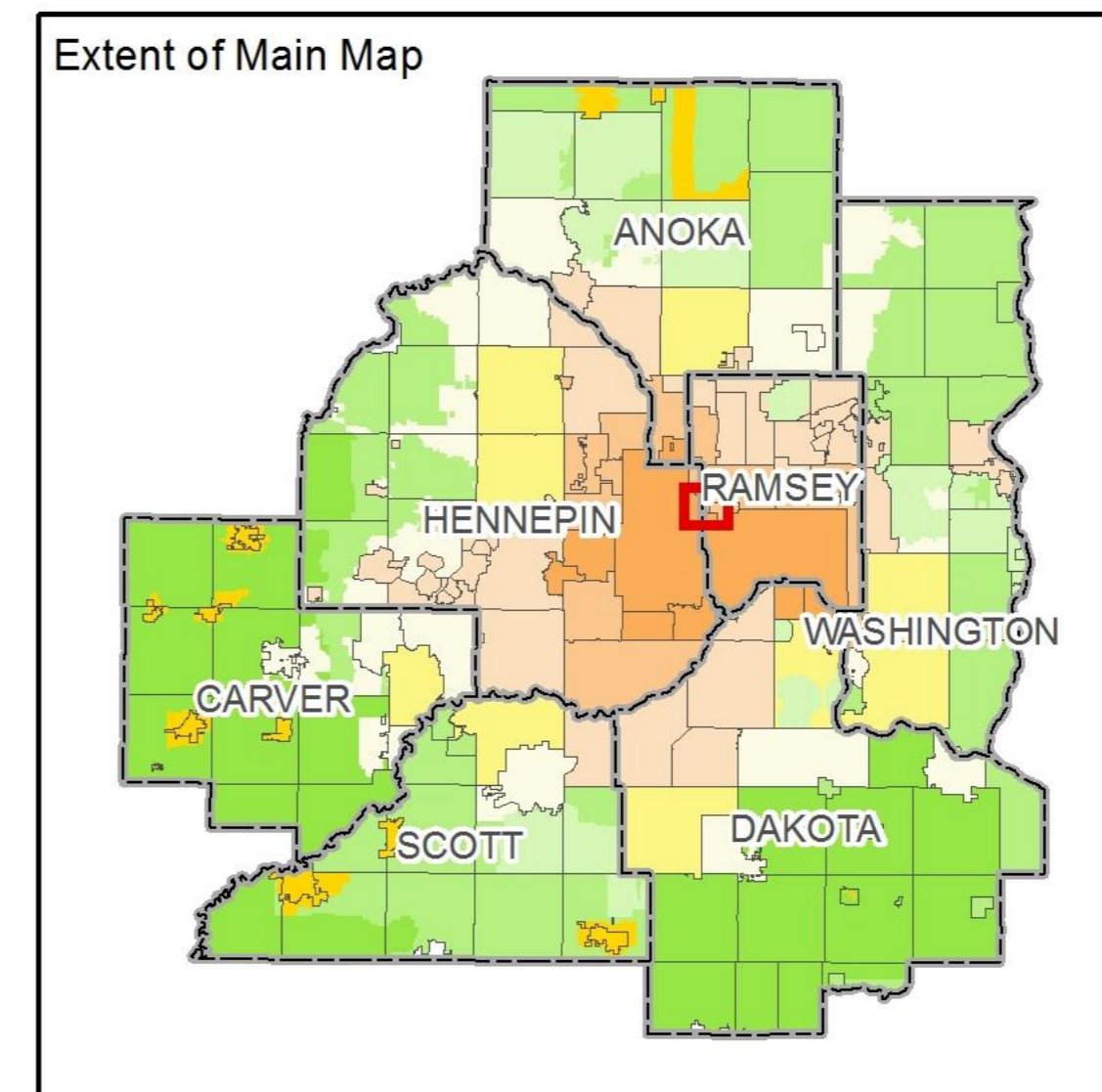
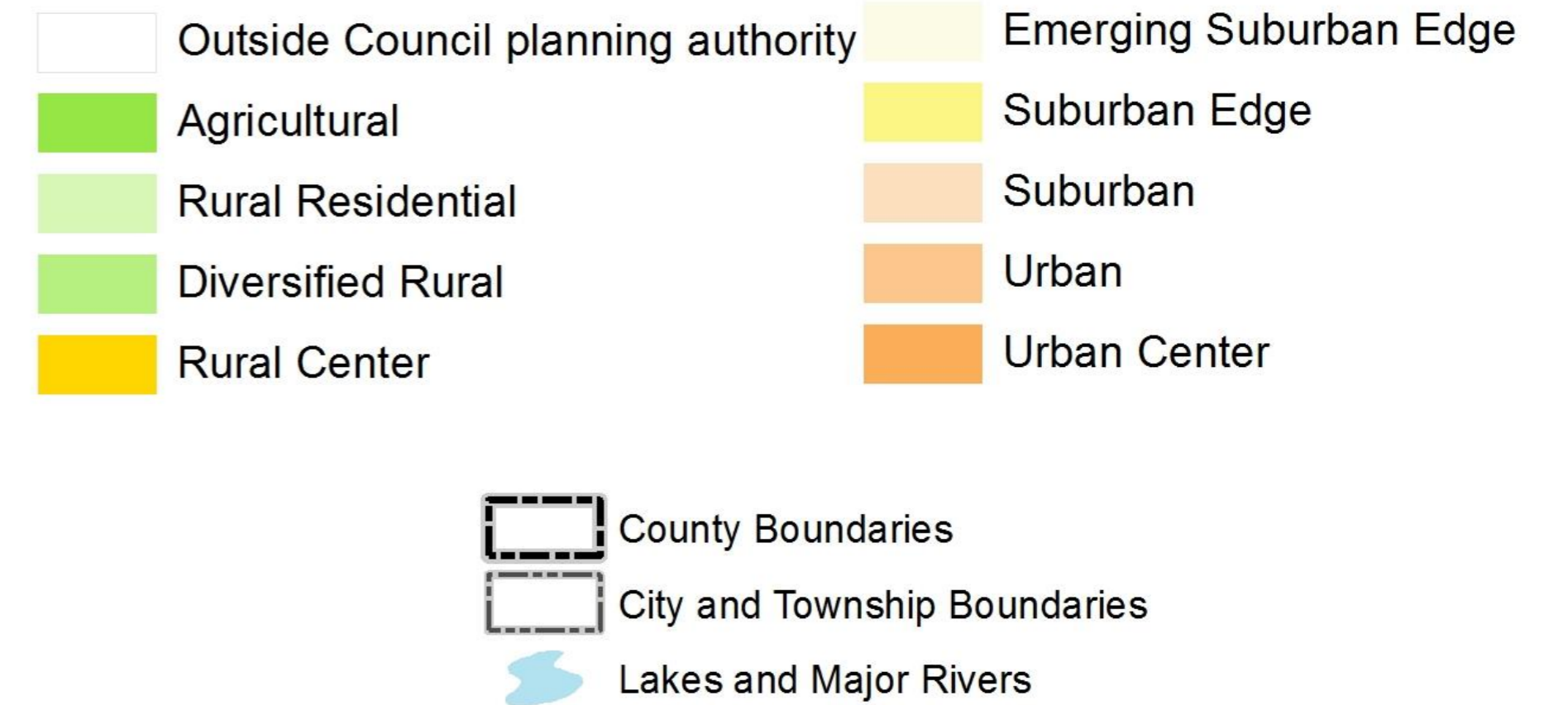
- Local Streets
- Existing State Trails
- Other Parks, Preserves, Refuges and Natural Areas

* Counties Transit Improvement Board (CTIB)

Community Designation



Community Designations



Forecasted Growth

Table 1. City of Lauderdale Forecasts

	Census 2010	Estimated 2017	System Statement Forecasts			Revised Forecasts		
			2020	2030	2040	2020	2030	2040
Population	2,379	2,426	2,490	2,500	2,520	2,490	2,800	2,950
Households	1,130	1,148	1,200	1,200	1,200	1,200	1,380	1,460
Employment	718	902	790	830	870	920	1,020	1,160

Planned Residential Density


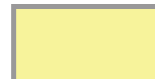









Table 2. Planned Residential Density, City of Lauderdale

2018-2040 Change

Category	Density			Net Acres	Min Units	Max Units
	Min	Max				
High Density Residential	12.01	30		1.60	19	48
High Density Residential Conservation	10.01	30		4.00	40	120
Mixed Use – North *	5.01	10		2.00	10	20
Mixed Use – South*	12.01	30		4.10	49	123
TOTALS				11.7	118	311
				Overall Density	10.08	26.58

* Calculations above reflect expected acres to develop as residential use – 75% residential for both mixed use categories.

Existing Land Use

Existing Land Use	 Institutional
 Single Family Res	 Open Space
 Townhome/Condo	 Park and Recreation
 Apartments	 Utility
 Commercial	 ROW
 Industrial	 Railroad ROW



Legend

 Institutional	 Open Space
 Single Family Res	 Park and Recreation
 Townhome/Condo	 Utility
 Apartments	 ROW
Commercial	Railroad ROW
Industrial	

Source: Metropolitan Council, MNGEO, City of Lauderdale, SHC



2040 Future Land Use

Land Use Designations

2040 Future Land Use

LDR (3-5 DU/Ac.)

MDR (5.01-10 DU/Ac.)



HDR-C (10.01-30 DU/Ac.)



HDR (12.01-30 DU/Ac.)



MXD-N (5.01-10 DU/Ac.)



MXD-S (12.01-30 DU/Ac.)



BP

Industrial

Park/Open Space

ROW

RR ROW



Land Use Designations

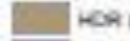
2040 Future Land Use

LDR (3-5 DU/Ac.)

MDR (5.01-10 DU/Ac.)



HDR-C (10.01-30 DU/Ac.)



HDR (12.01-30 DU/Ac.)



MXD-N (5.01-10 DU/Ac.)



MXD-S (12.01-30 DU/Ac.)



BP

Industrial

Park/Open Space

ROW

RR ROW

Source: Metropolitan Council, MNGEO,
City of Lauderdale, SHC

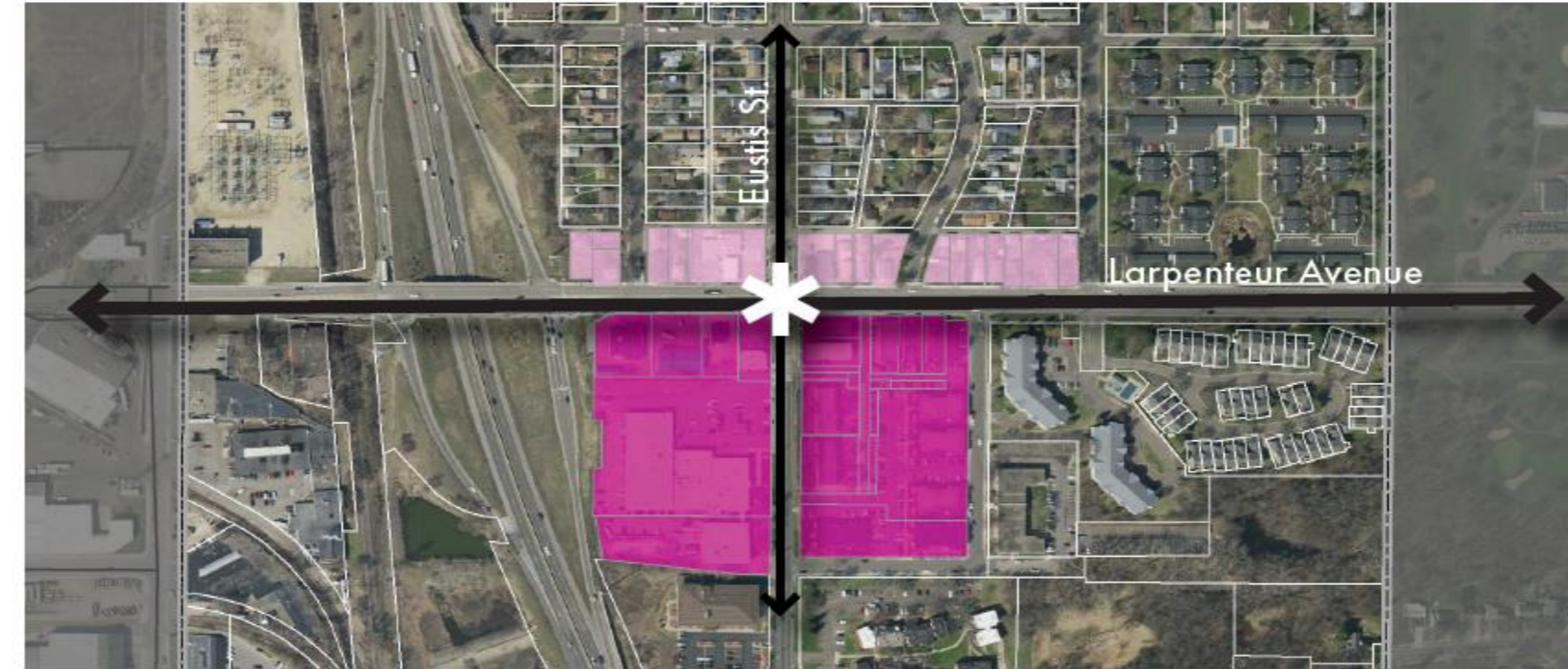
3. LAND USE

City of Lauderdale Comprehensive Plan 2040



METROPOLITAN
COUNCIL

Planned Redevelopment



Future Land Use 2040
Designation
MXD-N
MXD-S

Source: Metropolitan Council, MNGEO, City of Lauderdale, SHC

Land Use Designations

2040 Future Land Use

	HDR-C (10.01-30 DU/Ac.)		Industrial
	HDR (12.01-30 DU/Ac.)		Park/Open Space
	LDR (3-5 DU/Ac.)		ROW
	MDR (5.01-10 DU/Ac.)		RR ROW
	BP		



Future Land Use 2040
Designation
HDR

Source: Metropolitan Council, MNGEO, City of Lauderdale, SHC



2040 Land Use Designations
HDR-C
LDR

Source: Metropolitan Council, MNGEO, City of Lauderdale, SHC

Proposed Findings

That the Plan:

- Conforms to Metropolitan system plans
- Consistent with Council policies, with proposed changes
- Compatible with the plans of adjacent local governmental units and affected jurisdictions

Meeting Schedule

- Environment Committee on Tuesday, September 24
- Metropolitan Council on Wednesday, October 9

Proposed Action

- Authorize the City of Lauderdale to place its 2040 Comprehensive Plan into effect.
- Revise the City of Lauderdale's forecasts upward as shown in Table 1 of the Review Record.
- Revise the affordable housing need allocation for the City to 64 units.

Questions

