

2020 Program Report

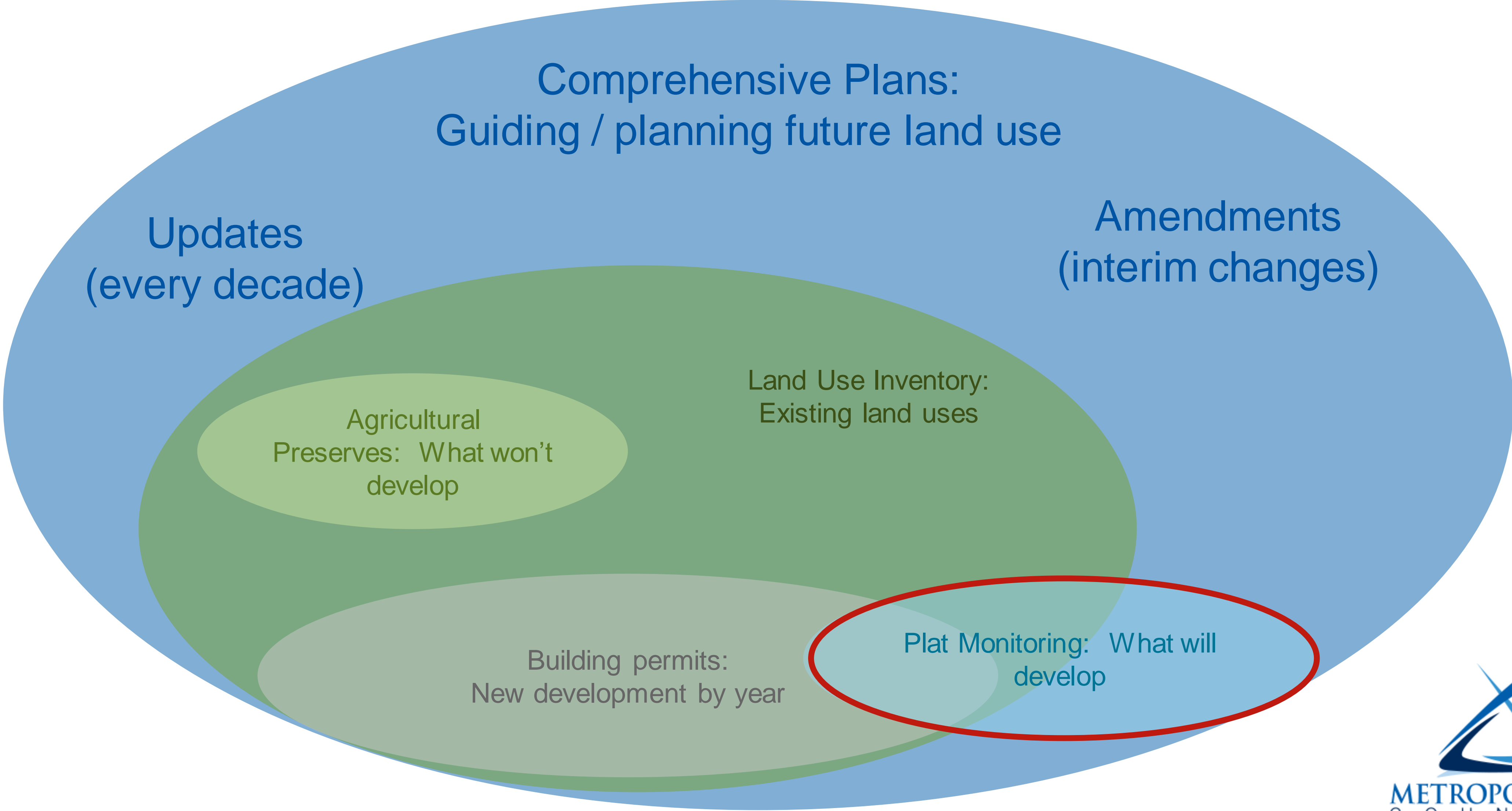
Plat Monitoring Program

June 21, 2021

Community Development Committee



How data and policy relate



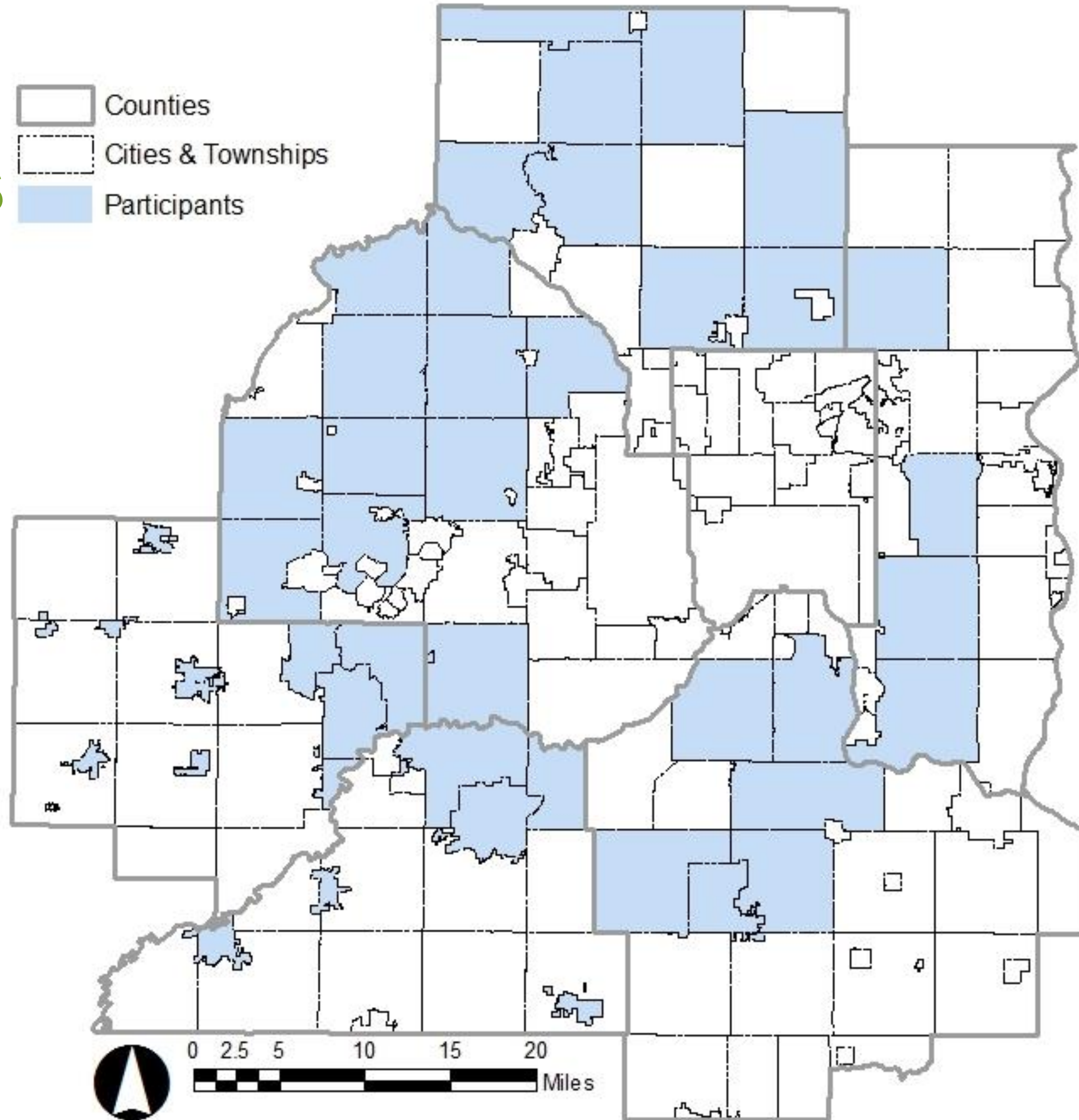
Background

- Program started in 2001
- Objectives
 - Measuring Council policy success
 - Sewered residential developments
 - Assessing the availability of land supply
 - Overall net density of development

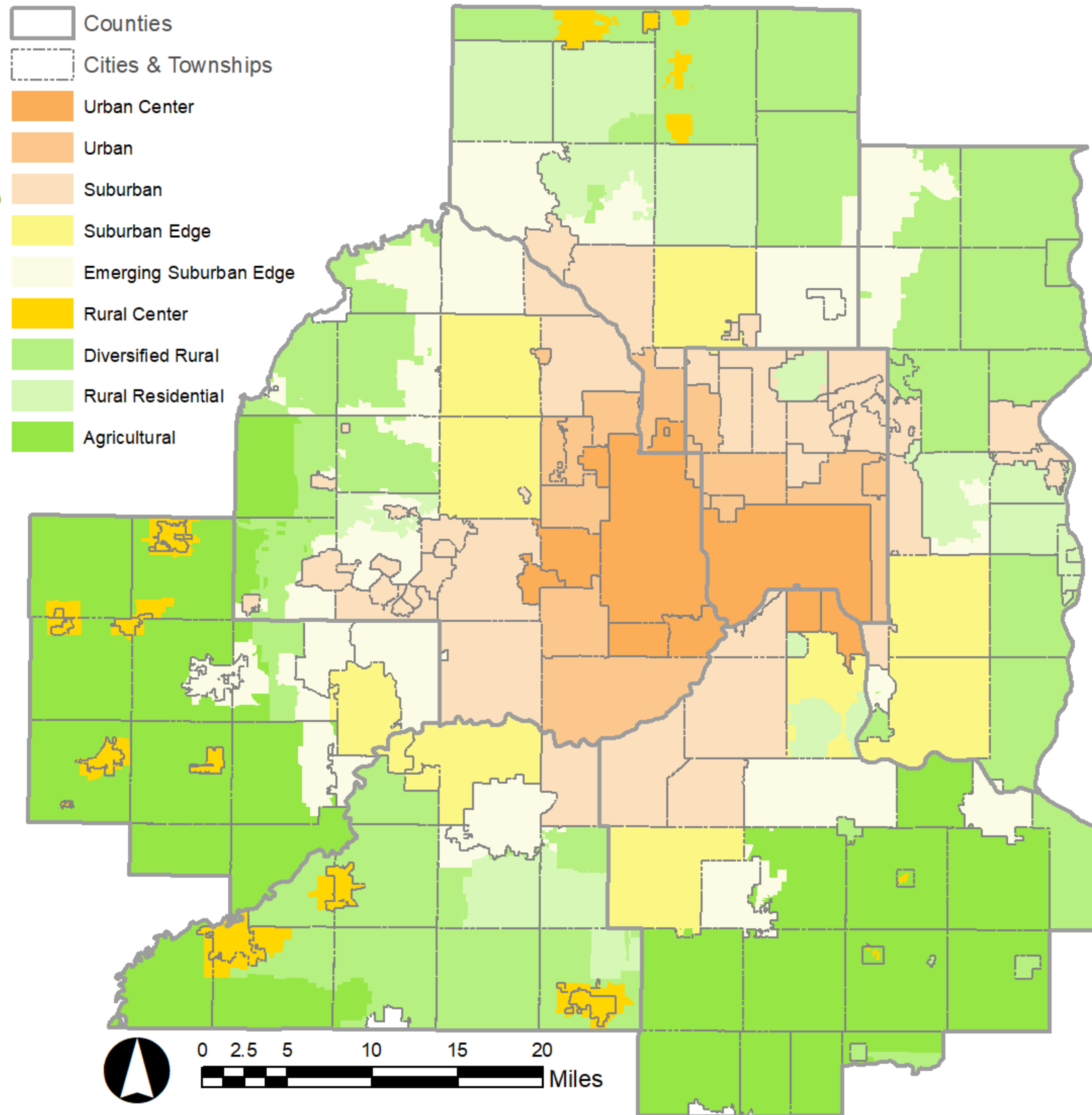


Participating Communities

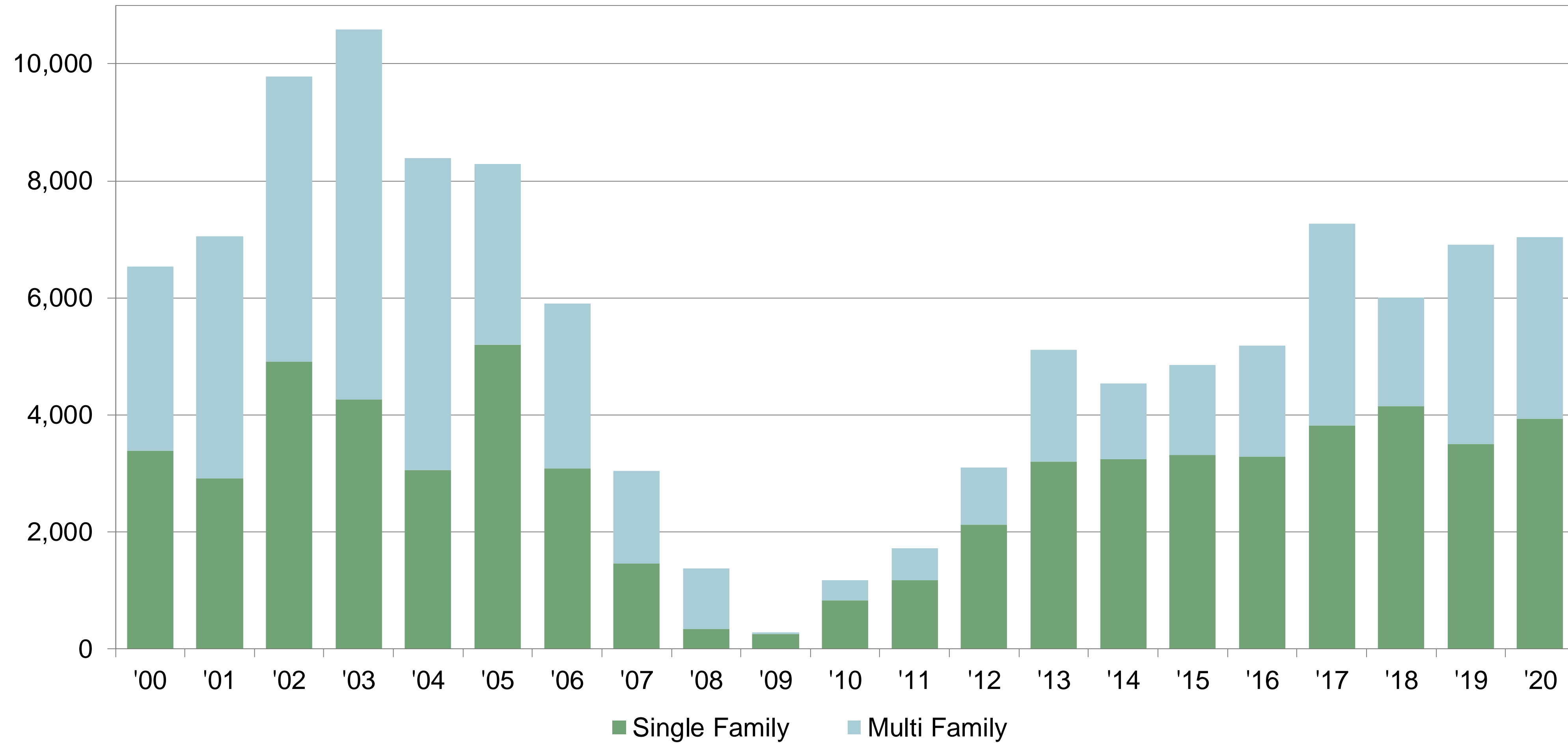
- Counties
- Cities & Townships
- Participants



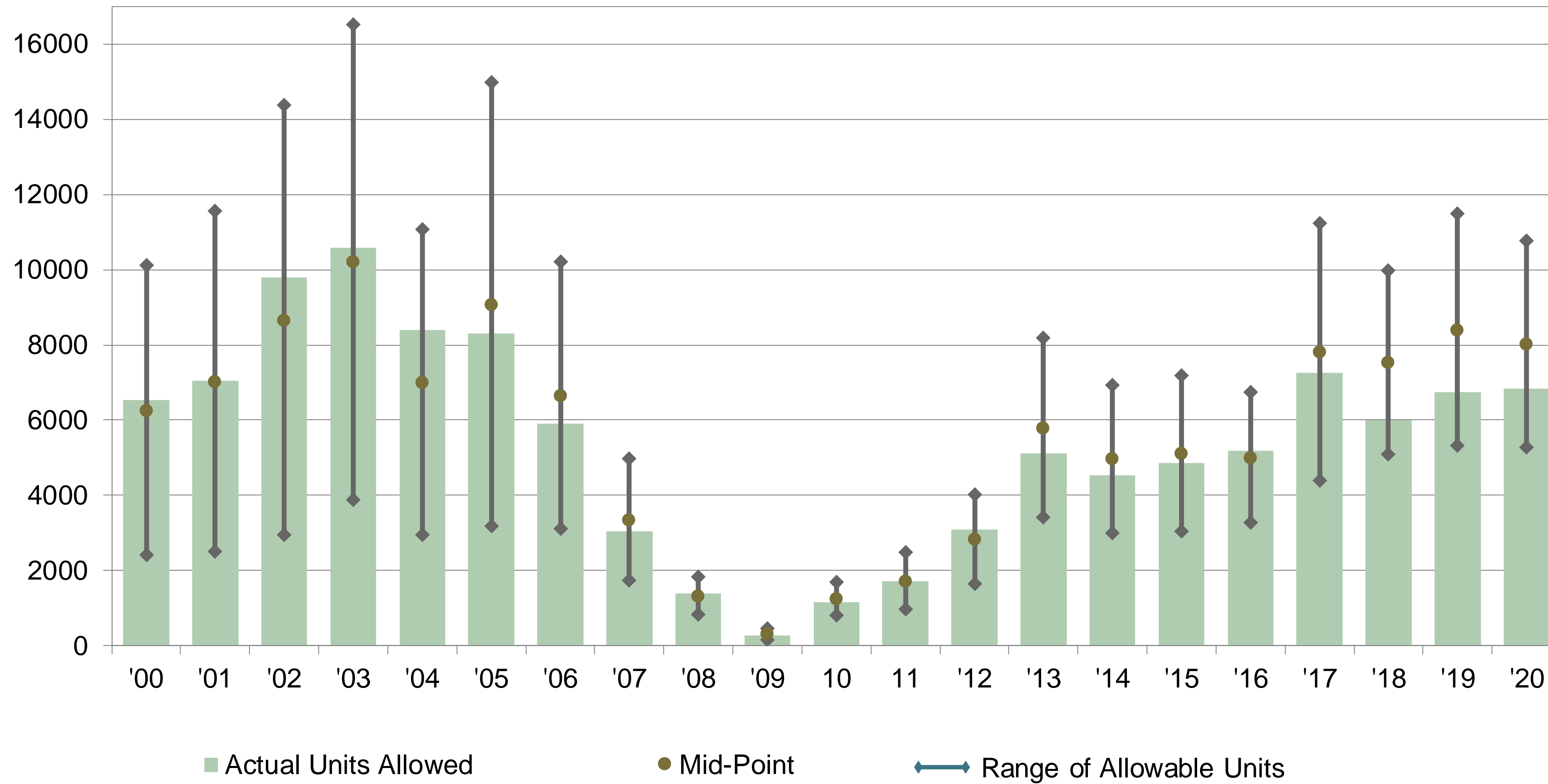
Community Designations



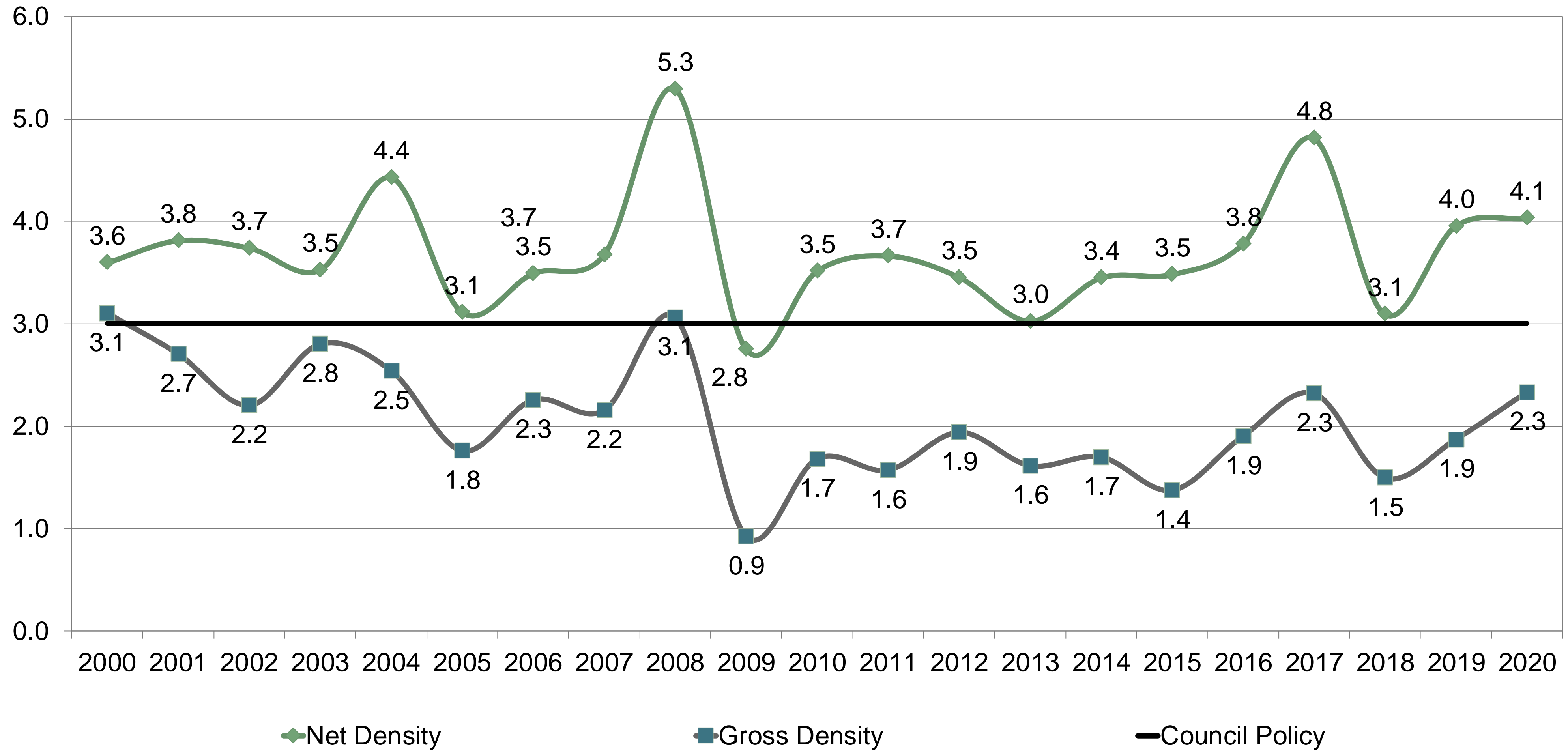
Findings: Housing Mix



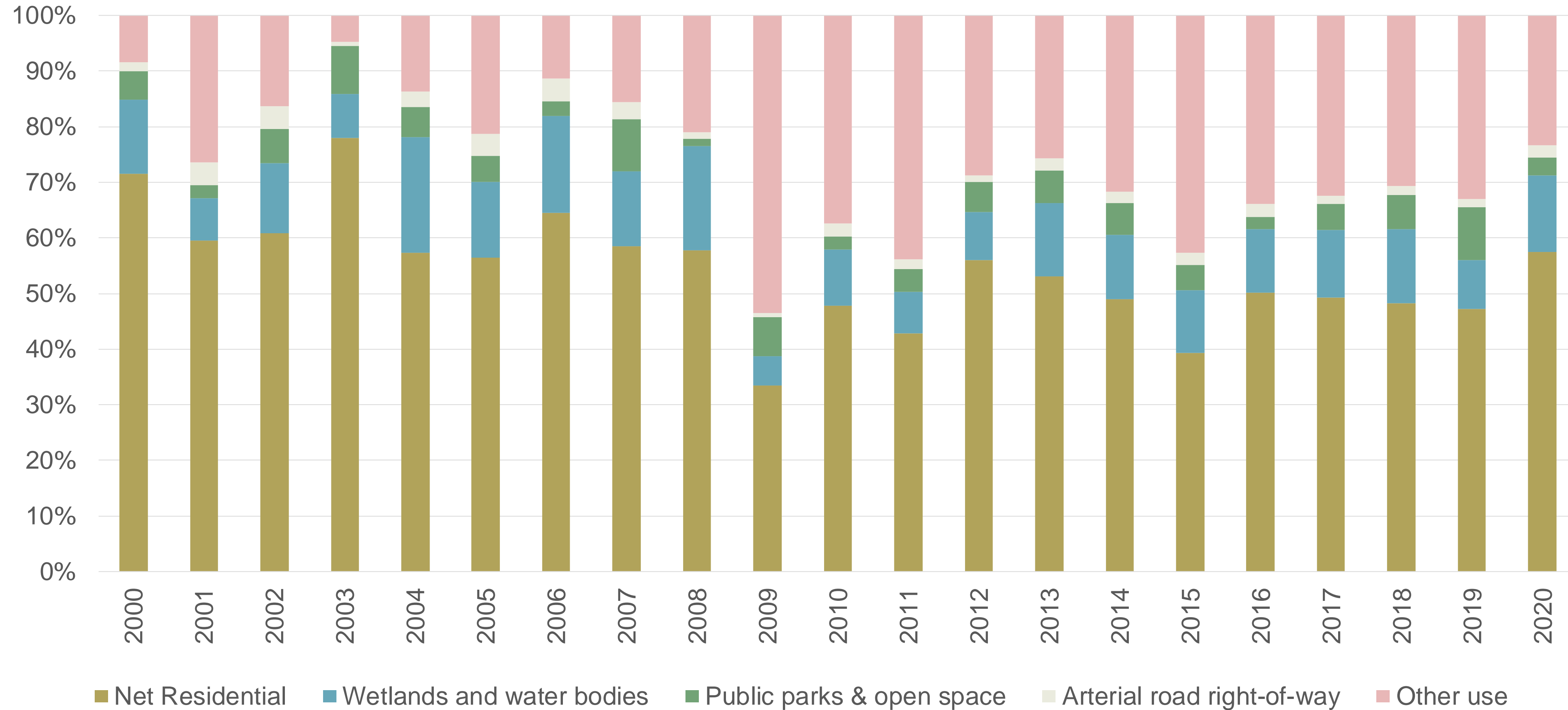
Findings: Local Plans Consistency



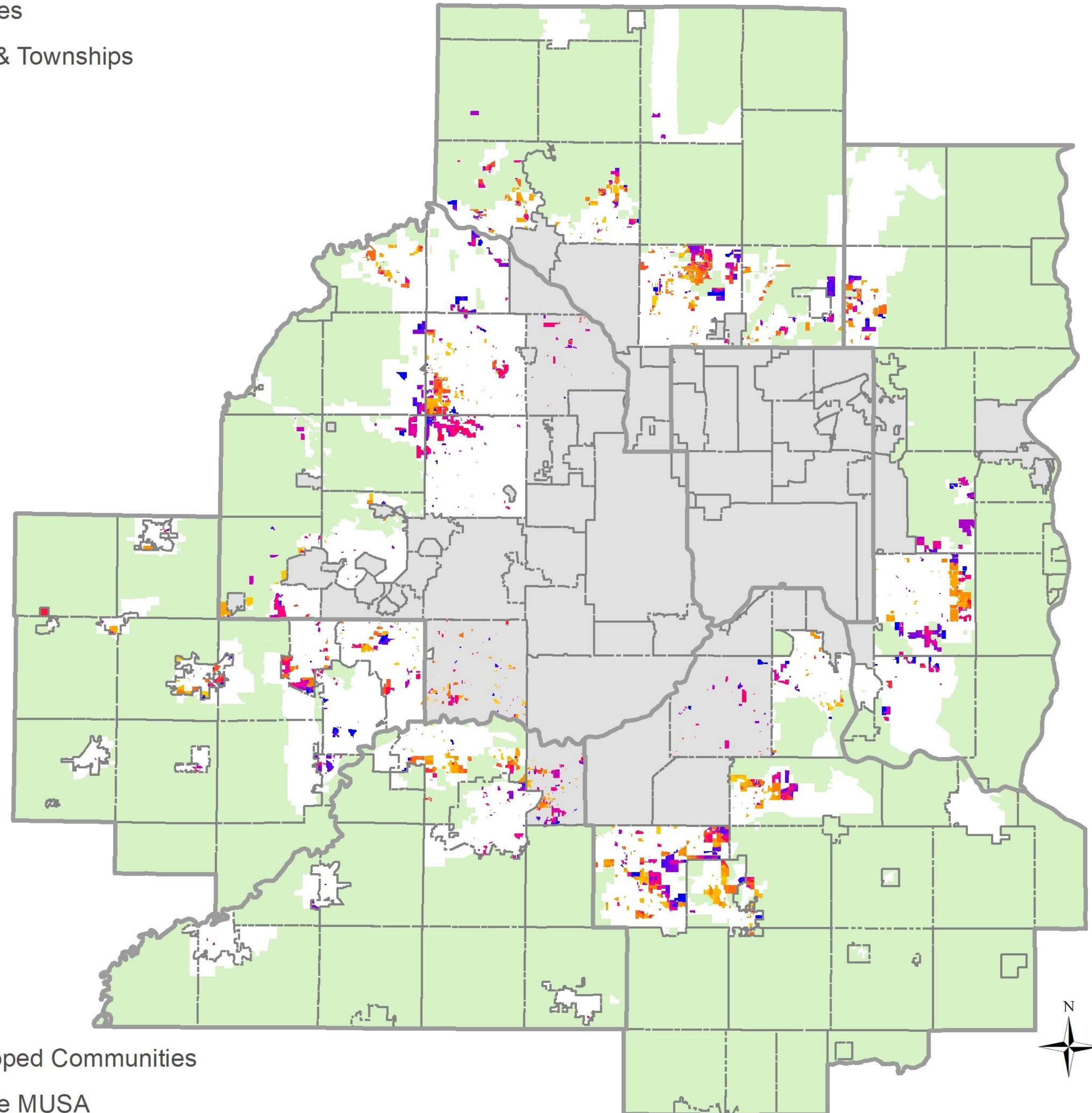
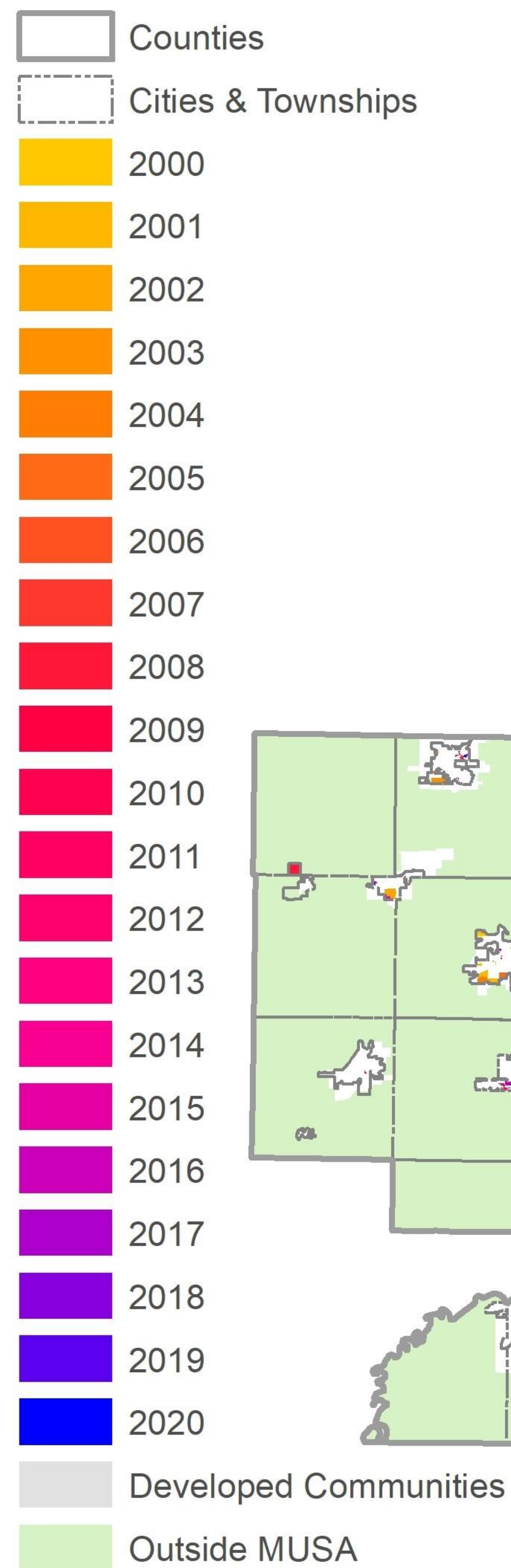
Findings: Overall Density



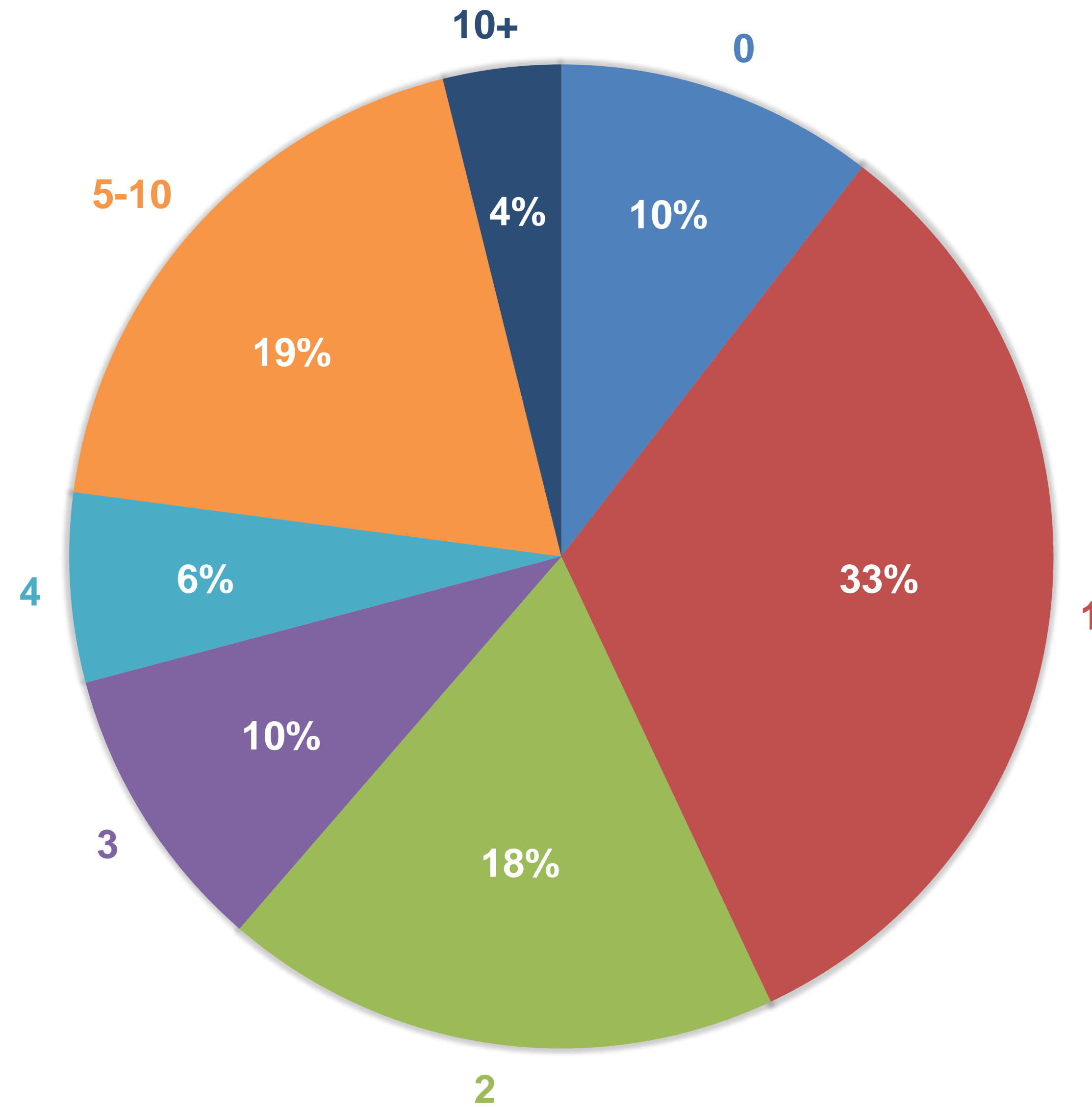
Findings: Land Utilization



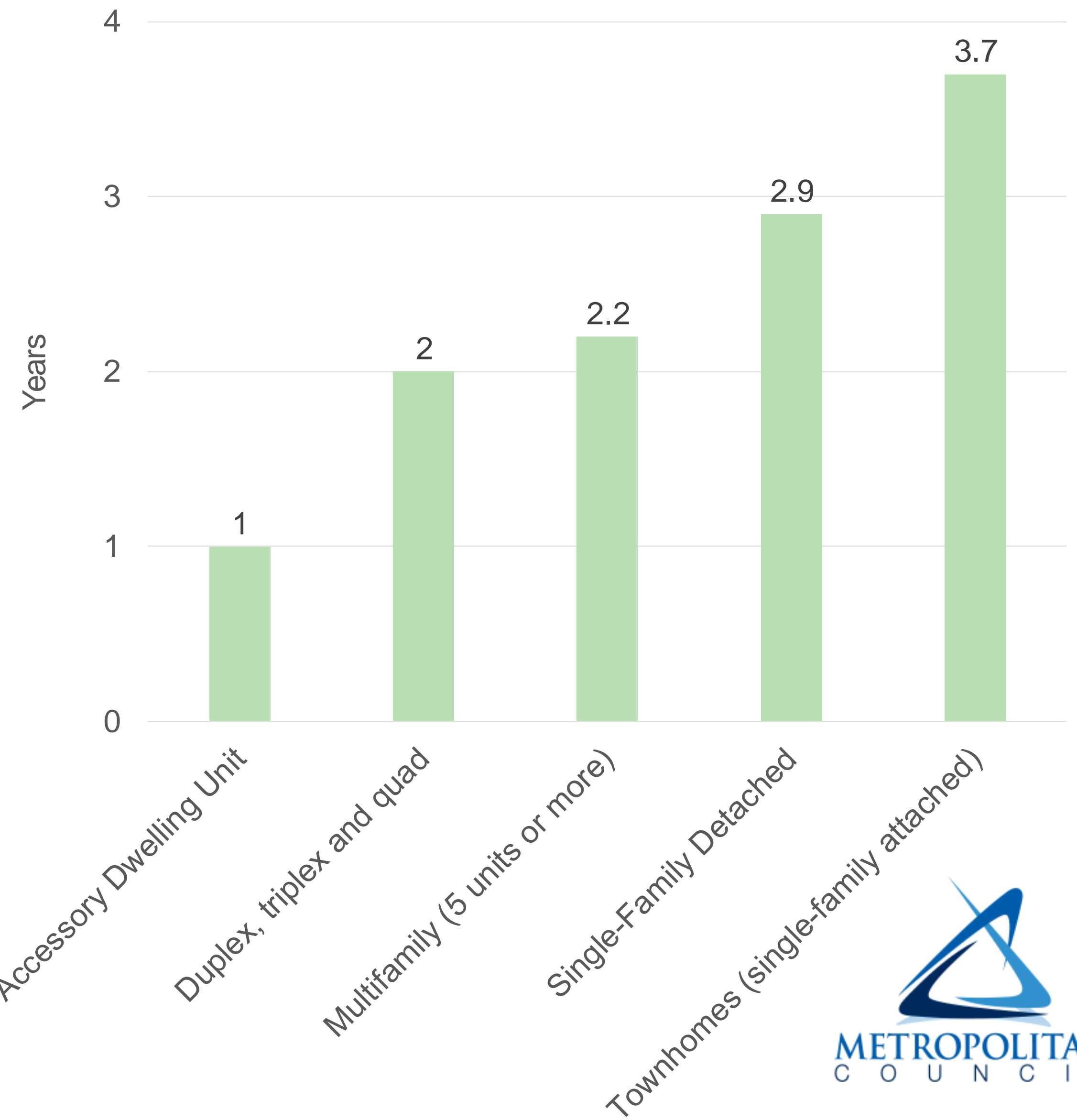
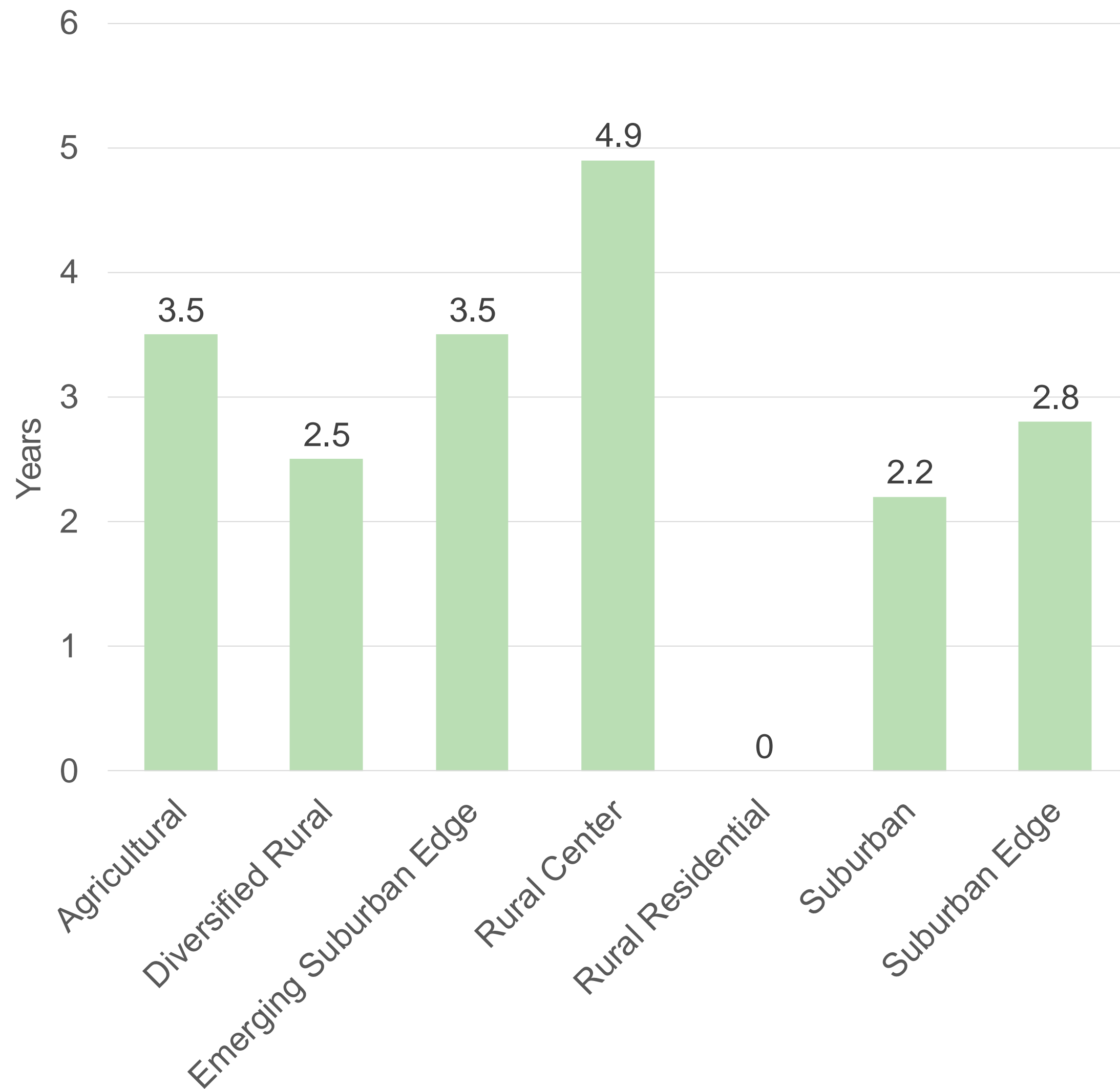
Overall Platting Activity



Findings: Lot Absorption



Findings: Lot Absorption



Questions

Raya Esmaeili, AICP

Senior Planner, Local Planning Assistance

Raya.Esmaeili@metc.state.mn.us

(651) 602-1616

