

Land Use Advisory Committee Report

Community Development Committee

Wendy Wulff, Council Member

June 21, 2022



Land Use Advisory Committee



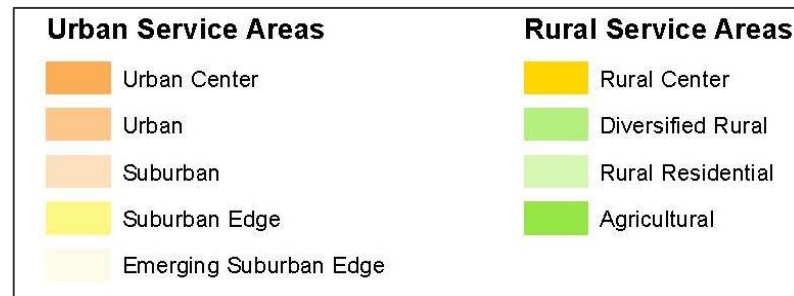
Information on the Committee

- Gives advice and assistance on metropolitan land use planning, comprehensive planning, and other planning as requested by the Council
- Includes Council Member Wendy Wulff, Chair, and 16 members
 - Includes 11 locally elected officials

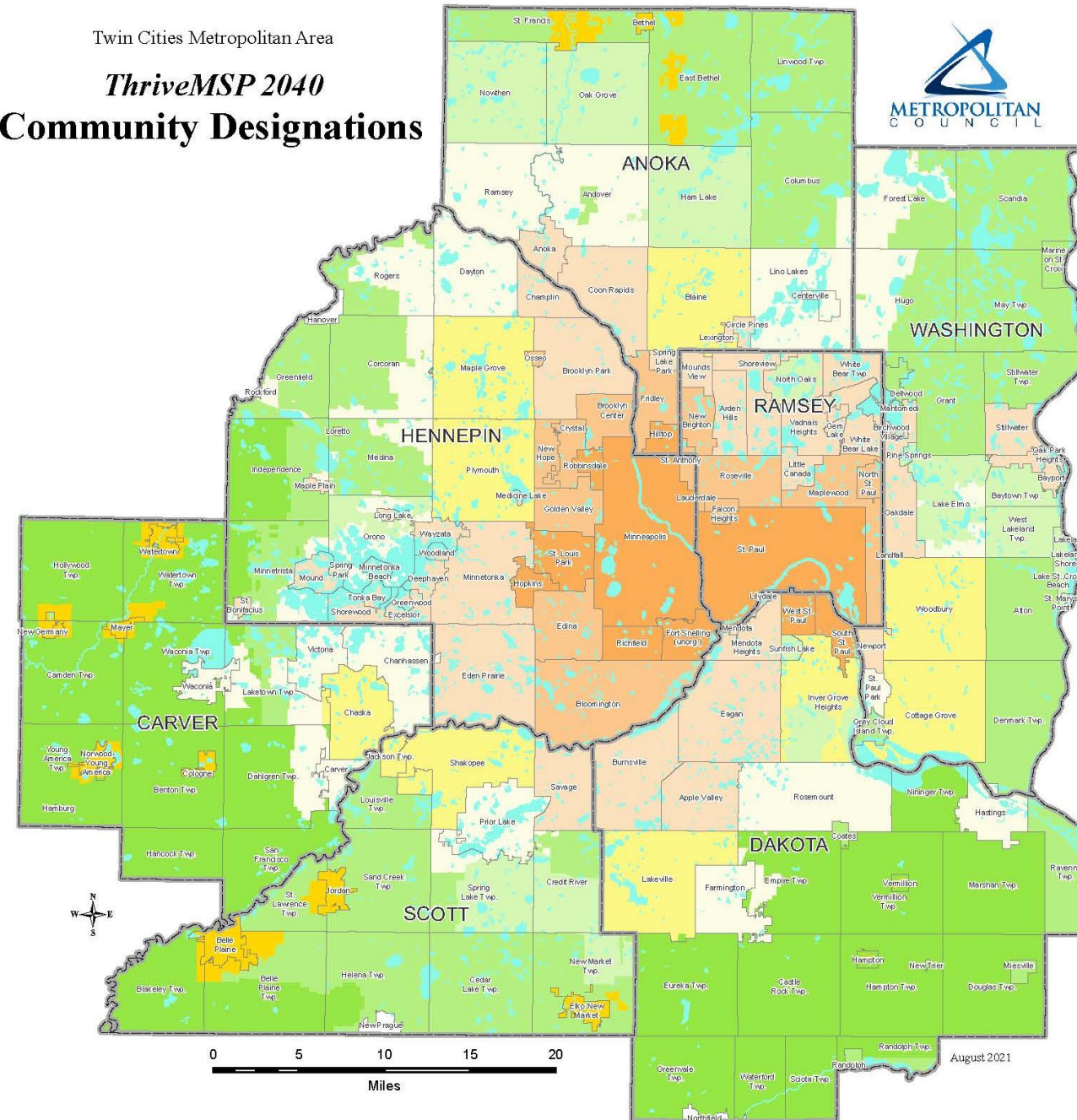
January 20, 2022 meeting

Topics

- Debrief of the comprehensive plan review process
 - Preliminary recommendations
- Community Designations
 - Background, process, timeline, and deliverables



Twin Cities Metropolitan Area
ThriveMSP 2040
Community Designations



March 17, 2022 meeting



Topics

- 2022 System Statements
 - Impacts for each community from updated *Regional Parks Policy Plan* and the *Transportation Policy Plan*
 - Process for resolving disputes
- Community designations
 - Variables for community designations in Thrive MSP 2040
 - LUAC's feedback on areas of focus, impacts to communities, and the built environment

May 19, 2022 meeting

Topics

- 2050 Regional Development Guide: Vision, Values, and Goals
- Community Designations
 - What staff heard from internal and external focus groups and LUAC
 - Refinement of existing variables and analysis of potential new variables
 - Discussion

