

Update on Fiscal Disparities Program

Community Development Committee

Deb Detrick, Planning Analyst, Local Planning Assistance

June 21, 2022



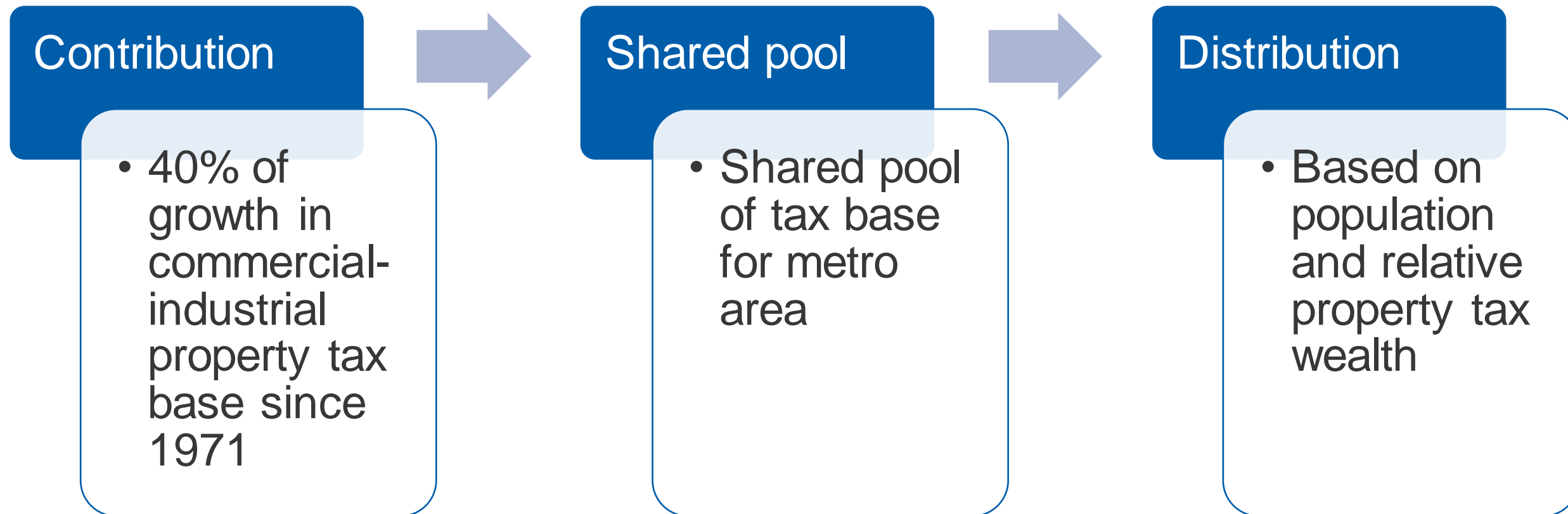
Tax-base sharing in the metro area



About the program

- Shares part of growth in commercial-industrial tax base (net tax capacity) in seven-county metro area
- Enacted in 1971
- Attracts national and international interest

How tax-base sharing works



Results for taxes payable in 2022

Tax base

- Shared nearly \$543 million in tax base for taxes payable in 2022

Tax revenue

- Shared nearly \$720 million in tax revenue (distribution levy) for taxes payable in 2022

Net recipients and net contributors



Taxes payable in 2022

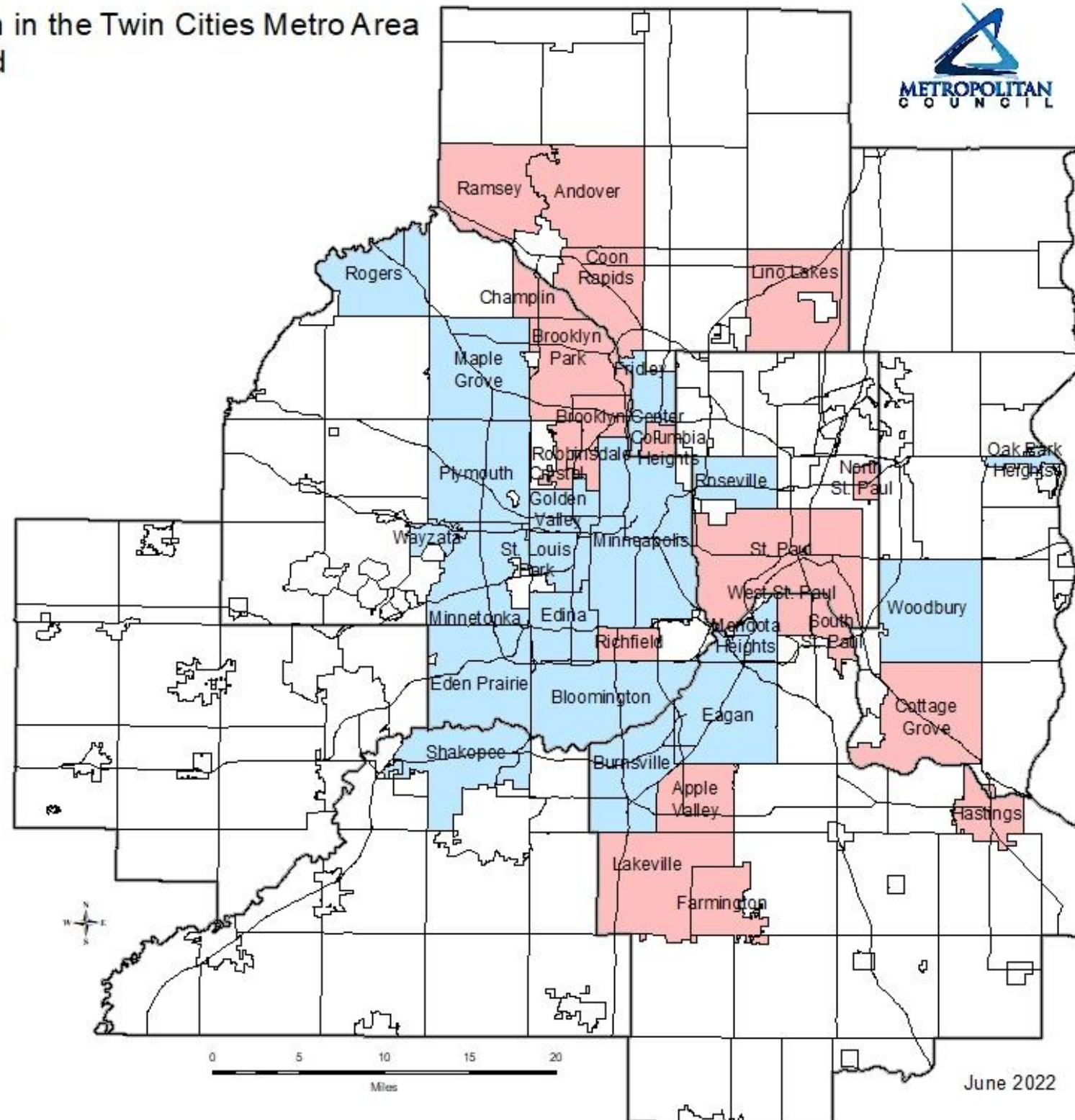
- 109 net recipients
 - 90 cities
 - 19 townships
- 70 net contributors
 - 48 cities
 - 22 townships

Fiscal Disparities Program in the Twin Cities Metro Area

Top 20 Net Recipients and Top 20 Net Contributors Taxes Payable 2022

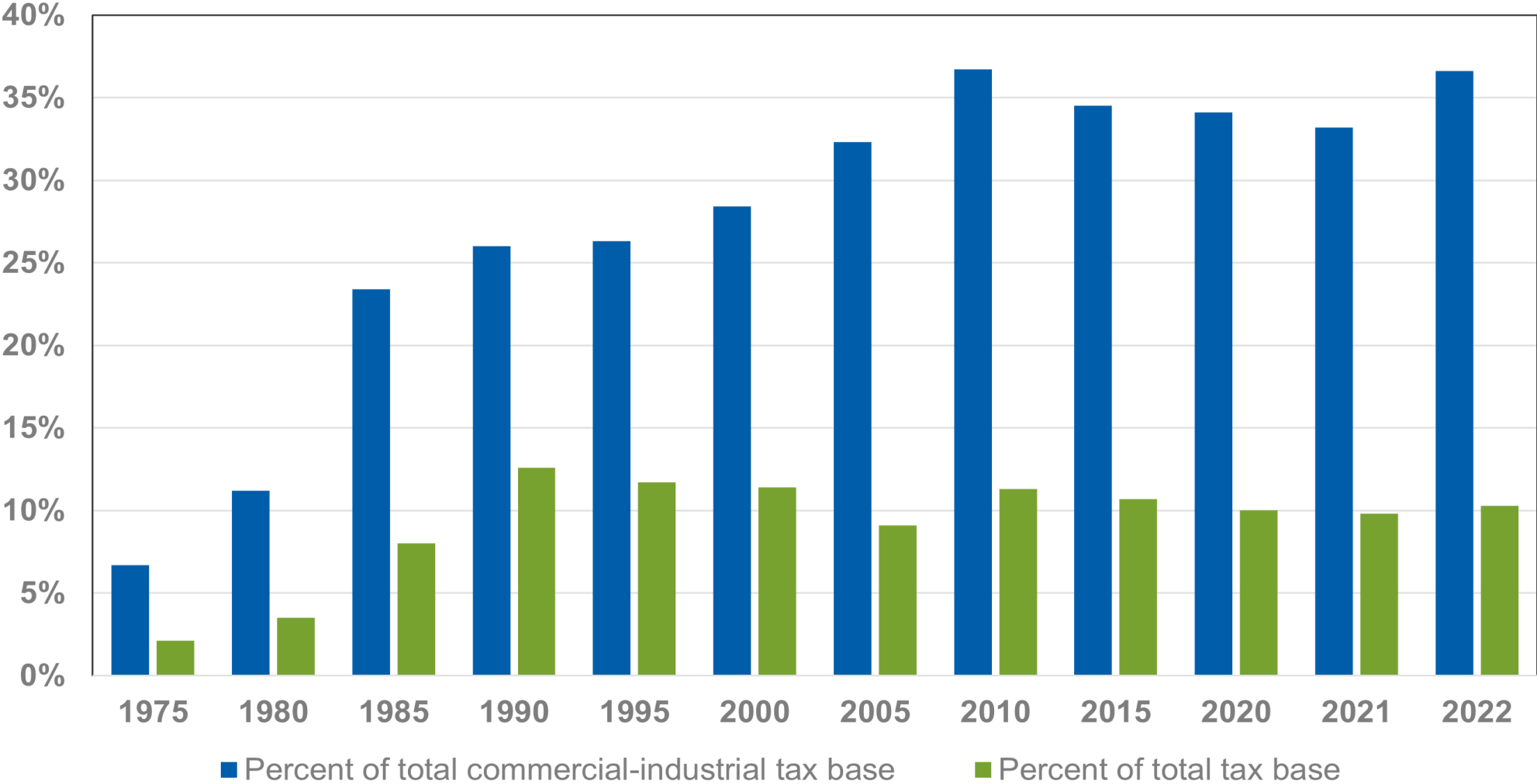


<u>Net Recipients</u>	<u>Net Contributors</u>
Andover	Bloomington
Apple Valley	Burnsville
Brooklyn Center	Chanhassen
Brooklyn Park	Eagan
Champlin	Eden Prairie
Columbia Heights	Edina
Coon Rapids	Fridley
Cottage Grove	Golden Valley
Crystal	Maple Grove
Farmington	Mendota Heights
Hastings	Minneapolis
Lakeville	Minnetonka
Lino Lakes	Oak Park Heights
North St. Paul	Plymouth
Ramsey	Rogers
Richfield	Roseville
Robbinsdale	Shakopee
South St. Paul	St. Louis Park
St. Paul	Wayzata
West St. Paul	Woodbury



Shared tax base in metro area

Tax base for taxes payable 1975 to 2022



Participation in program

179 communities participate

- Four areas excluded by statute
- Statutory role of Metropolitan Council and Minnesota Department of Revenue to determine eligibility of communities to participate in the program
 - Four communities ineligible to participate

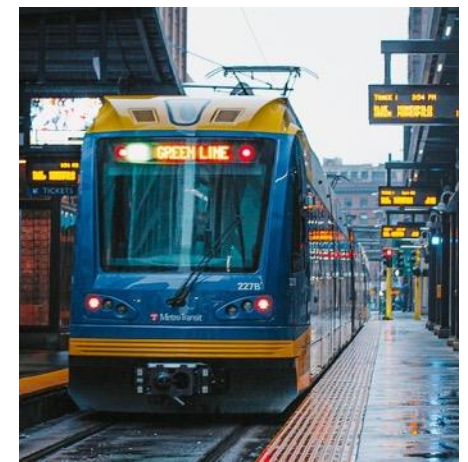


Reduces disparities in property tax wealth

Ratio of highest to lowest commercial-industrial tax base per person for communities with population over 10,000

15 to 1 without tax-base sharing

5 to 1 with tax-base sharing





Find more information at metro council.org

[Fiscal Disparities: Tax-Base Sharing in the Metro Area](#)

Deb Detrick

Planning Analyst, Local Planning Assistance
debra.detrick@metc.state.mn.us
651.602.1327

