



Climate Action Work Plan

Community Development Committee



November 7, 2022

Climate Action Work Plan



Purpose of the plan

- Builds on our existing climate work and unifies our efforts across the Council
- Defines commitments, strategies, and actions that will strengthen our ability to deliver services to the region
- Moves us forward on a pledge we made in *Thrive MSP 2040* to become a climate leader

Past and current climate work



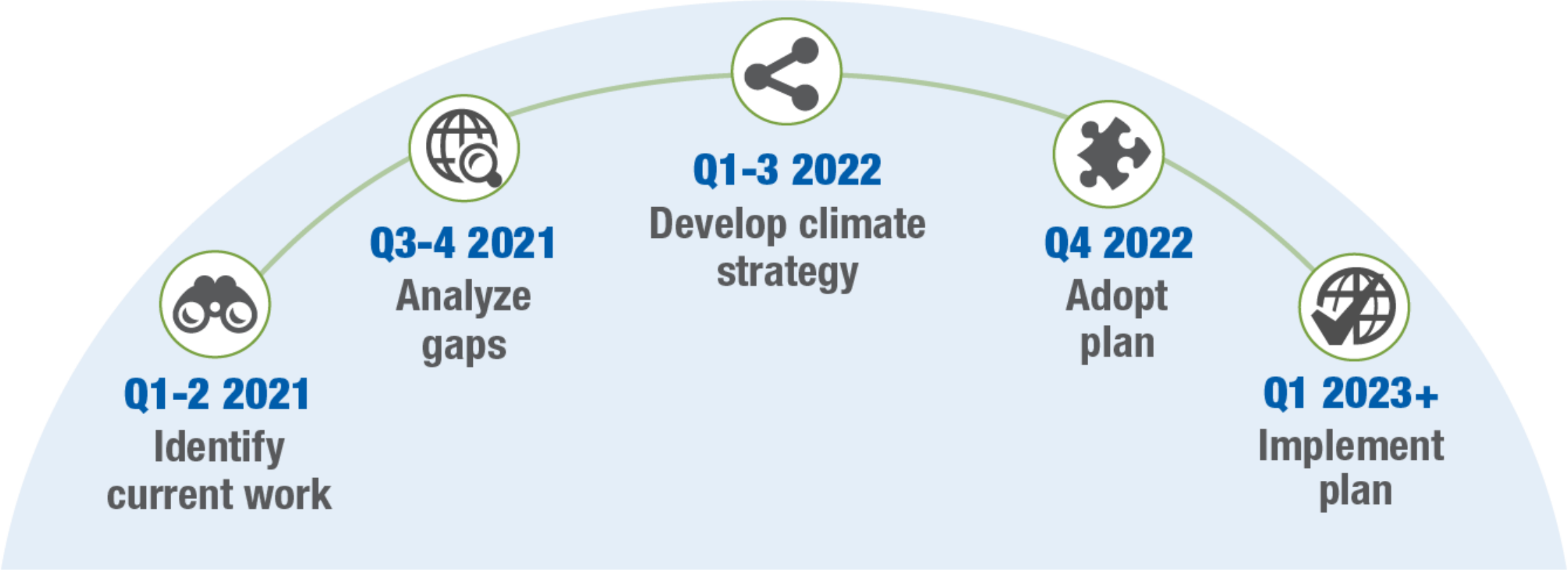
Tools, partnerships, and action

- [Climate Vulnerability Assessment](#)
- [Twin Cities Greenhouse Gas Inventory](#)
- [Solar-for-Vouchers program](#)
- [Growing Shade](#)
- [Improving energy efficiency in our wastewater operations](#)
- [Zero-Emission Bus Transition Plan](#)
- [Laying the groundwork to accelerate electric vehicle adoption](#)

Developing the plan



PROJECT TIMELINE



Climate plan basics

Part of effort across state agencies

- Dovetails with Minnesota Climate Action Framework
- Internal to our planning and operations; it is not a regional climate action plan
- Five-year time frame
- Lays the groundwork for more action beyond 2027
- Organized by commitments, strategies, and actions



Climate Action Work Plan Commitments

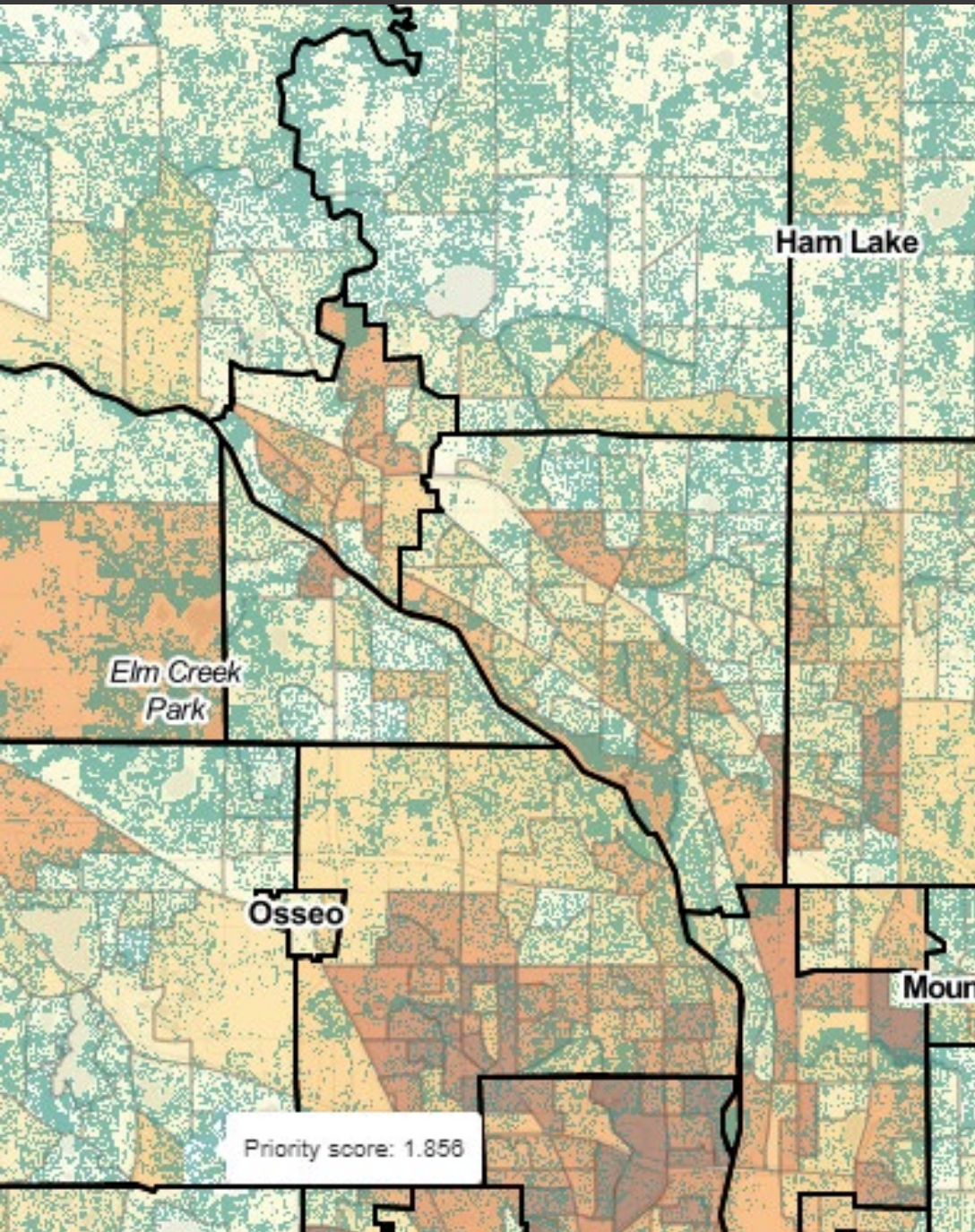
- **Commitment 1:**
We will incorporate environmental justice principles as we plan, implement, and evaluate our climate action work
- **Commitment 2:**
We will accelerate emissions reductions from our operations to achieve carbon neutrality
- **Commitment 3:**
We will accelerate regional emissions reduction through existing and new partnerships
- **Commitment 4:**
We will reduce risks and impacts of climate change hazards to our facilities and services
- **Commitment 5:**
We will support and collaborate with partners to advance regional climate adaptation efforts



Core of the plan: Matrix of actions

ID	Council Commitment	Council Strategy	Action	Equity Considerations & Implications	Lead	E	M	MTS
1.1.1	Support and collaborate with partners to advance regional climate adaptation efforts	Convene and partner with regional stakeholders to expand climate engagement and collaboration	Convene and participate in conversations with partners organizations and residents to share challenges and best practices, identify gaps and collaboration opportunities, and develop a shared regional vision of climate resiliency.		CD + ES	X	X	X
1.1.2	Support and collaborate with partners to advance regional climate adaptation efforts	Convene and partner with regional stakeholders to expand climate engagement and collaboration	With regional partners, completing a climate vulnerability assessment of regional transportation systems including highways, transit, bicycle, and pedestrian systems.		MTS	X	X	X
1.1.3	Support and collaborate with partners to advance regional climate adaptation efforts	Convene and partner with regional stakeholders to expand climate engagement and collaboration	With cities, counties, MnDOT, MPCA, and others around roles and responsibilities in coordinating climate work, including exploring the development of a regional Transportation Climate Action Plan.		MTS	X	X	X
1.2.1	Support and collaborate with partners to advance regional climate adaptation efforts	Provide and expand technical assistance, tools, and data for regional and Council decision-making	Document and share climate change mitigation and adaptation strategies and guidance for counties, cities, and townships to adopt into local policy, planning, or programs.	Yes.	CD	X	X	X
			Develop qualitative research to support effective climate-related technical assistance through					

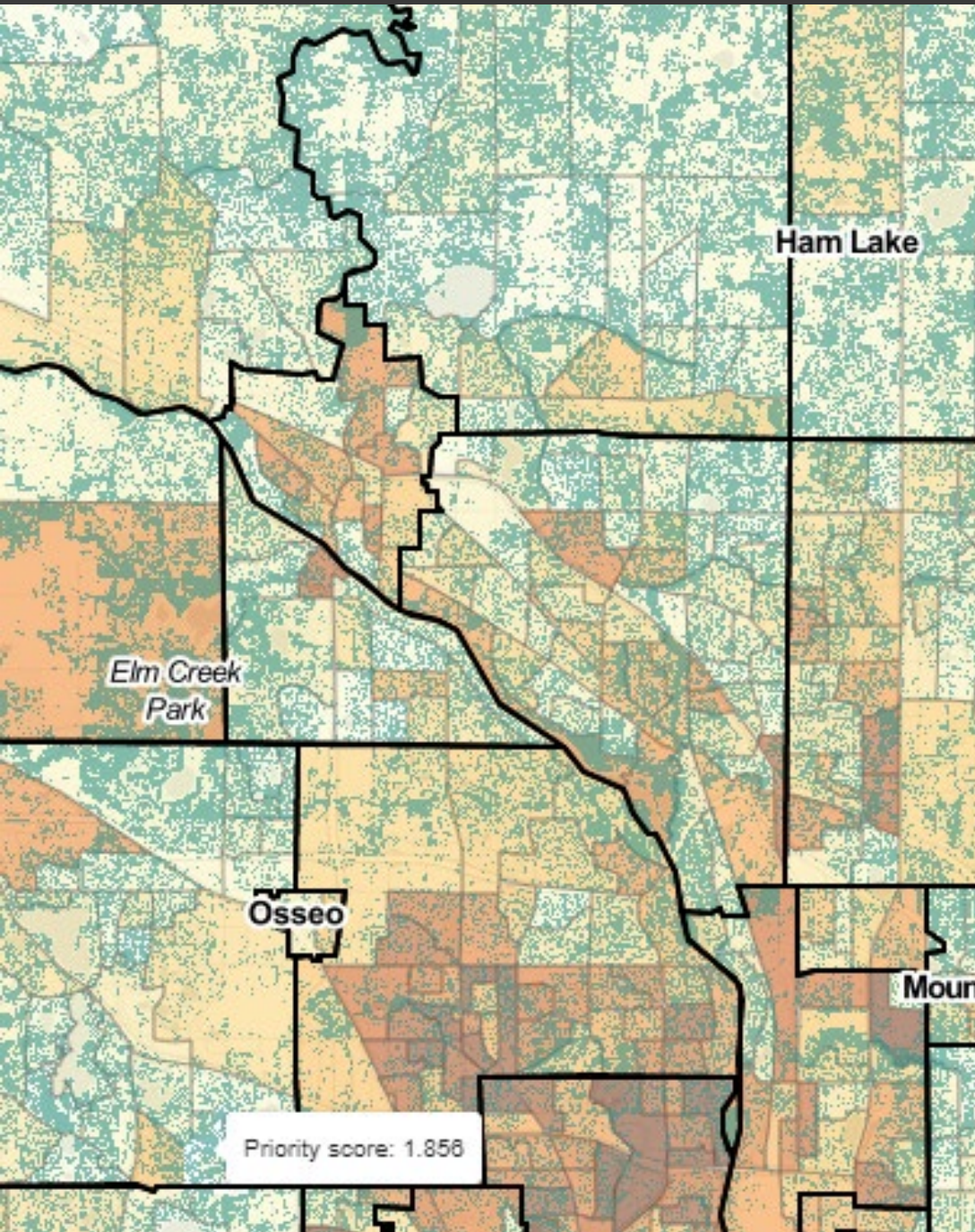
Research & Technical Assistance Actions



Priority 1 - High impact, low difficulty

- Use **environmental justice principles** and include environmental justice data sets where applicable in updates and creation of **all climate-related tools**.
- Develop **climate adaptation and resilience guidelines** to inform **project and facility planning** - from property acquisition through final design. Guidelines should address the use of **forward-looking climate change data** to identify and assess climate risks and the selection and prioritization of strategies to minimize potential climate vulnerabilities. Where appropriate, guidelines should encourage the use of Council-developed climate data and tools.
- Develop **qualitative research** to support effective climate-related technical assistance through partnerships with new organizations. Emphasize storytelling and knowledge sharing with local governments. Use qualitative methods to develop insight into barriers and opportunities of climate action in our region.

Research & Technical Assistance Actions



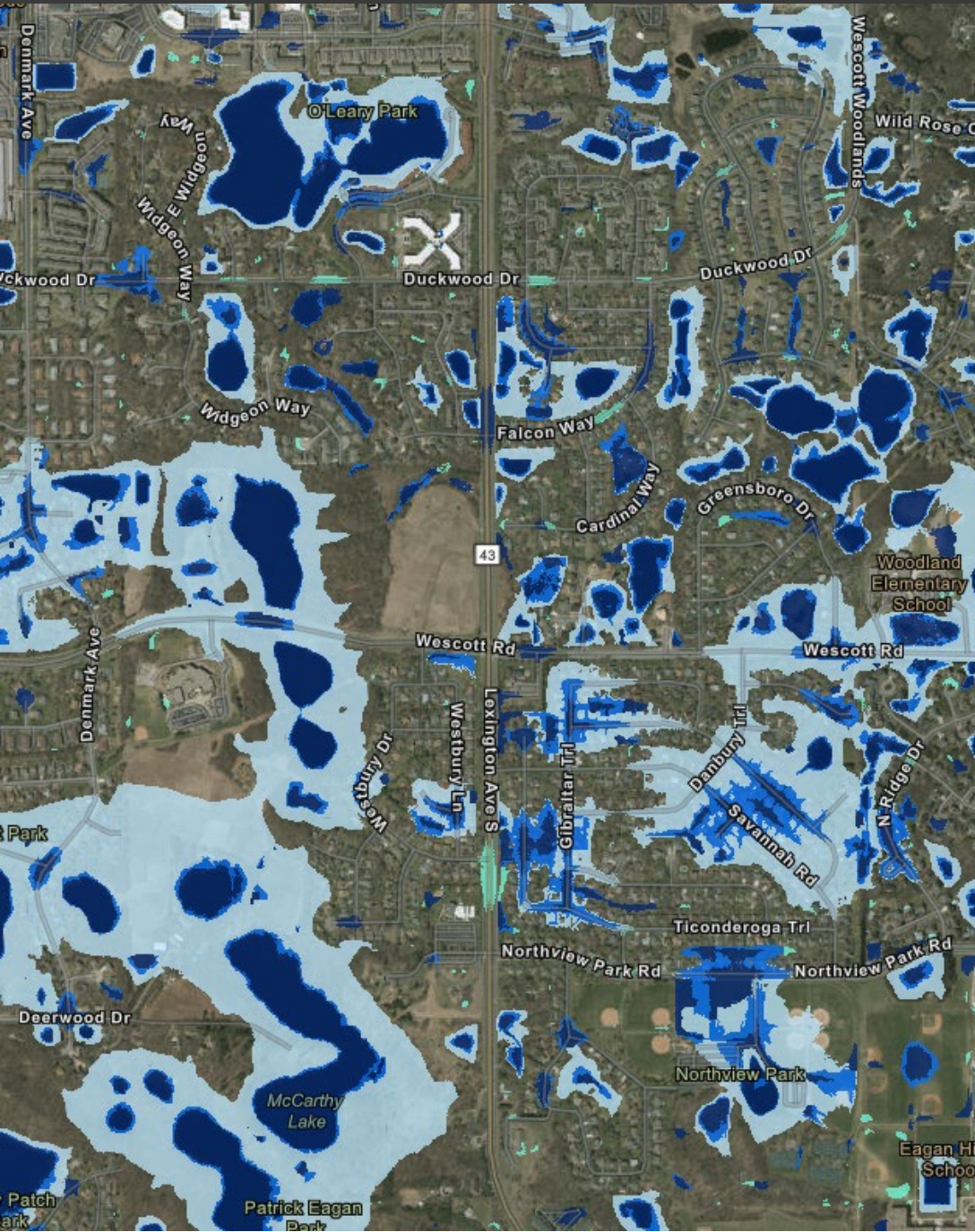
Priority 2 - High impact, high difficulty

- Maintain a **regional community-scale GHG inventory** and business-as-usual forecasts to support regional and local planning. Collect and synthesize regional climate mitigation and adaptation data in an easily accessible platform for public consumption.
- Provide **technical assistance for the electrification** of city fleets through strategic partnerships.
- Document and share **climate change mitigation and adaptation strategies** and guidance for counties, cities, and townships to adopt into local policy, planning, or programs. Resources include EJ guidance and materials.

Priority 3 – Low impact, low difficulty

- Develop **climate mitigation and adaptation strategies** to address current and future climate impacts on **regional systems within the 2050 Policy Plans** (Housing, Water Resources, Transportation, Parks).

Research & Technical Assistance Actions with Env. Services



Priority 1 - High impact, low difficulty

- Enhance the technical capacity of climate change research partnerships with academic institutions in the Twin Cities region, to ensure technical assistance and tools incorporate current knowledge and research-informed practices.
- Evolve the Council's **localized flood mapping tool** to incorporate the latest data to accurately assess risk to areas of localized, riverine, and groundwater flooding at a regional scale. Inform and train partners on its use.
- Quantify and map the **value of ecosystem services to inform planning processes**. Provide a decision-making framework linking climate, water, and land use to ecosystem services across the region.

Partnership Actions



Priority 1 - High impact, Low difficulty

- Convene and participate in conversations with partner organizations and residents to **share challenges and best practices**, identify **gaps and collaboration** opportunities, and develop a shared regional vision of climate resiliency. (with Environmental Services)

Priority 2 - High impact, high difficulty

- Expand **strategic partnerships** and leverage Council authorities to increase energy efficiency, expand renewable energy deployment, and reduce out-of-pocket utility bills for residents in the region's affordable housing.

Funding Actions



Priority 1 – High Impact, low difficulty

- Convene regional partners to identify opportunities to **collaborate in the pursuit of State and Federal funding opportunities** that advance regional climate adaptation efforts.
- Identify and **establish local funding mechanisms**, in collaboration **with partner organizations**, to support investment in climate adaptation and infrastructure resiliency projects that mitigate flooding, reduce urban heat, improve water quality, prioritize environmental justice concerns, and preserve and enhance ecosystem services within the greater metropolitan region. (with Environmental Services)

Priority 2 – High Impact, high difficulty

- Utilize Council **climate research, data, and tools** to inform decision-making **within Council programs, like grantmaking**, in order to advance environmental justice outcomes.

Committee Discussion



As you have reviewed the actions:

- Do you have questions about any of the actions?
- Is there anything missing?
- Are there actions that appear to be more critical than others?
- Do you have questions about the capacity and resources needed to execute the actions?
- Other questions or thoughts you want to share?

Next steps for Climate Action Work Plan



Council committee schedule

- Oct. 12 – First presentation to Council
- Oct. 24 – Transportation Committee
- **Nov. 7 – Community Development Committee**
- Nov. 8 – Environment Committee
- Nov. 9 – Management Committee
- Nov. 16 – Committee of the Whole
- Nov. 30 – Council Climate Work Group
- Dec. 14 – Council considers final plan approval



LisaBeth Barajas

Executive Director, Community Development Division

Eric Wojchik

Planning Analyst, Community Development

