



# Forecasts and Scenarios

Intro to scenario planning and population and employment forecasting



April 3, 2023

Joel Huting

# This presentation will cover:

- Planning forecasts: why and how
- Scenario planning for an uncertain future
- Timelines of upcoming presentations

# Community Development Research

- Create shared understanding about regional issues that matter
- Collect, disseminate, and analyze data about:
  - Demographic trends
  - Development patterns and housing
  - Climate change and natural systems
  - Parks visitation
  - Equity
  - Regional economy
  - Other regional issues

# Planning forecasts: why and what?

- Any good plan includes expectations about the future
- 30-year forecasts of population, households, jobs
  - Authorized by MN Statutes 473.146 and 473.859
  - Shared foundation for coordinated planning, systems, and services

# Planning forecasts: how?

**Regional economic model** for macro-level employment and population

```
graph TD; A[Regional economic model for macro-level employment and population] --> B[Land use model for location of future land use, local households and employment]; B --> C[Travel demand model accounting for connection of places; projects travel patterns and loads]; C --> B;
```

**Land use model** for location of future land use, local households and employment

**Travel demand model** accounting for connection of places; projects travel patterns and loads

# Scenario Planning



- Planning for an uncertain future.
- Asking ‘what if’ questions.
- Preparing for different possibilities.

# What scenario planning is NOT

## **We are not picking a future.**

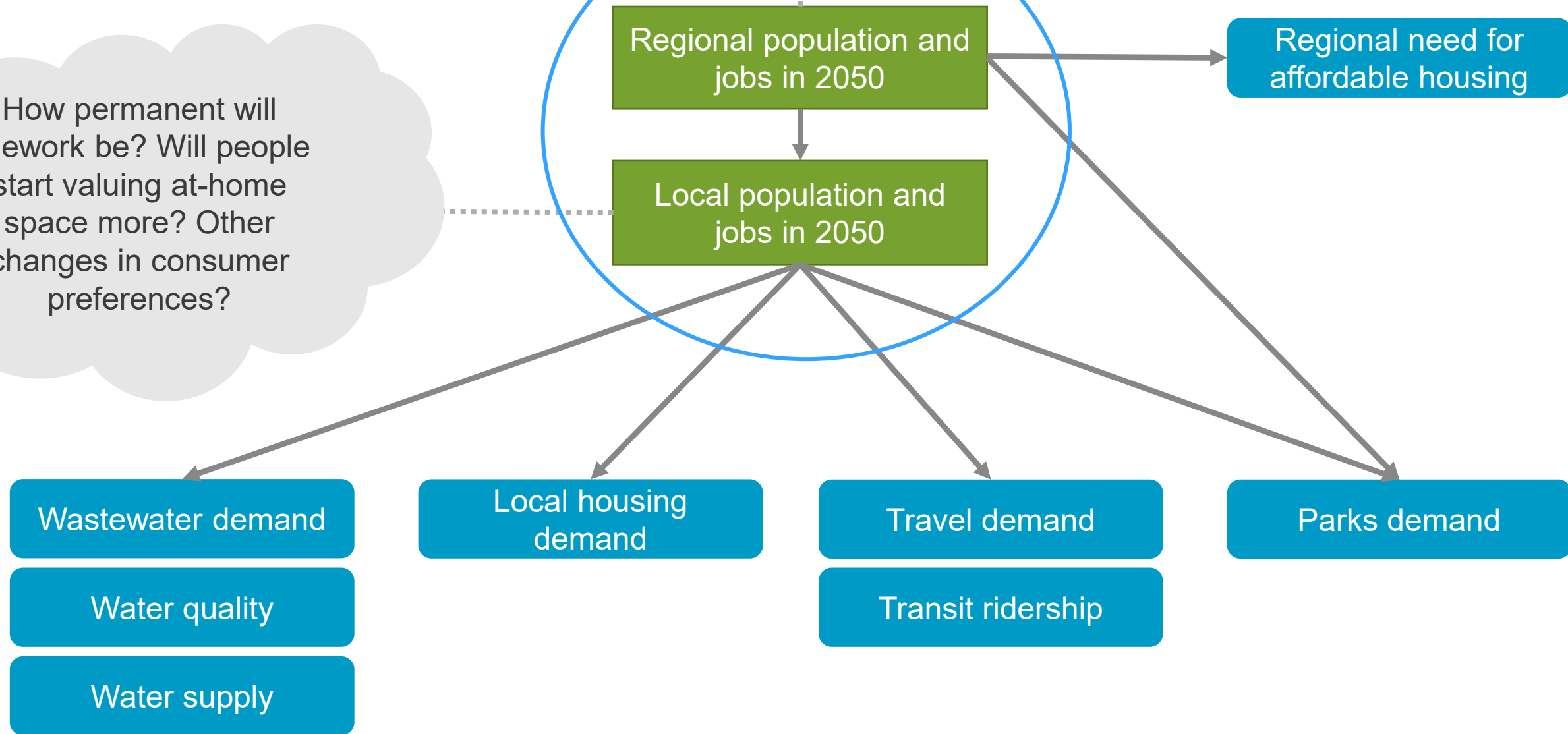
- Instead, we are exploring our preparedness for a variety of futures.

## **This is not our official 2050 regional forecast.**

- We are using the same forecast tools, but in a hypothetical planning exercise.

How will the pandemic affect birth rates? How will telework impact net migration to the region? How many climate refugees will we get? Will immigration levels change?

How permanent will telework be? Will people start valuing at-home space more? Other changes in consumer preferences?

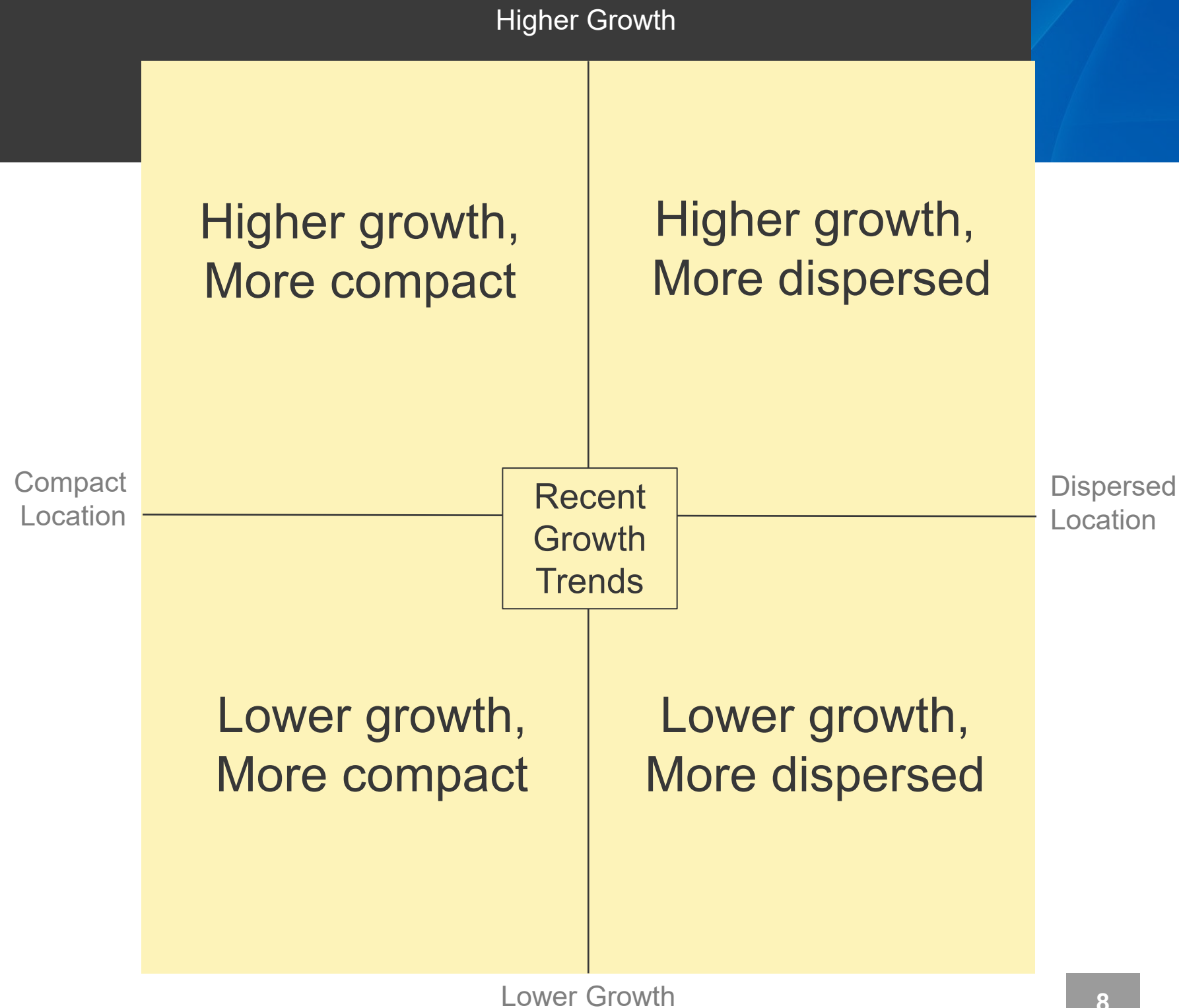




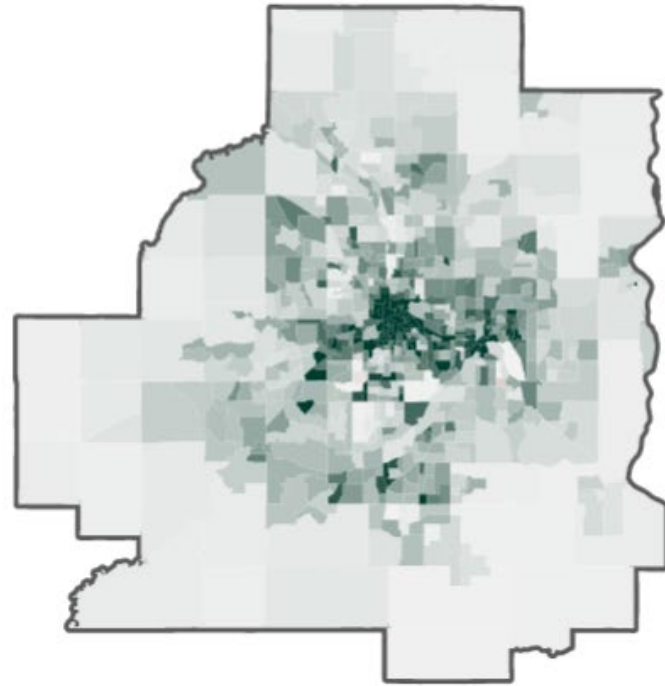
# Regional Growth Scenarios

## How much? Where?

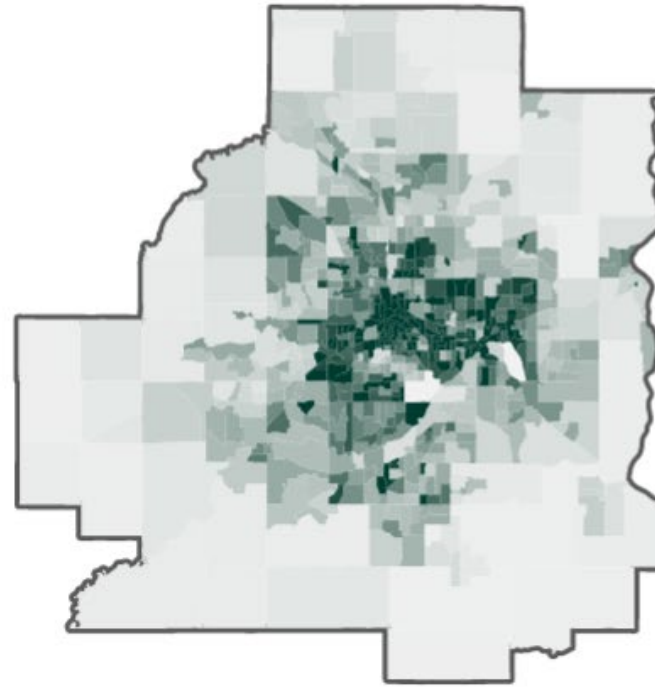
- Recent growth trends: recent growth trends continue
- High growth/compact development
- High growth/dispersed development
- Low growth/compact development
- Low growth/dispersed development



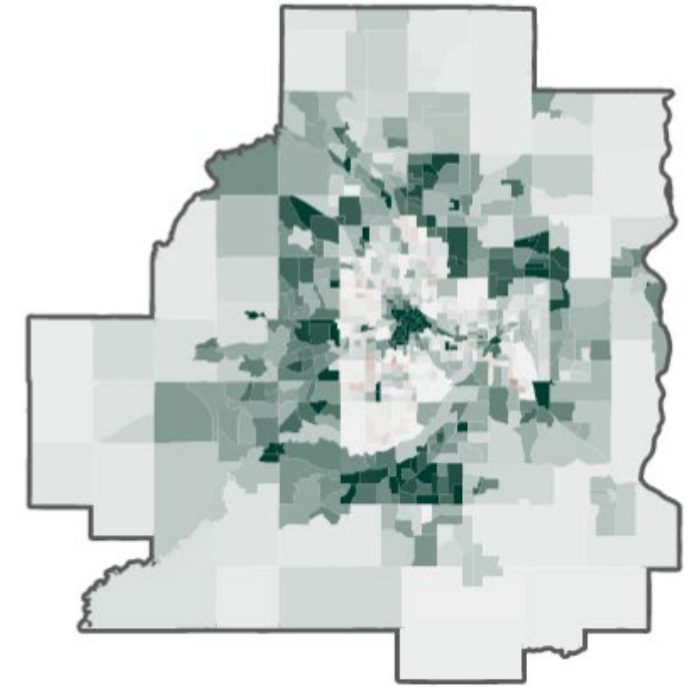
Recent growth trends



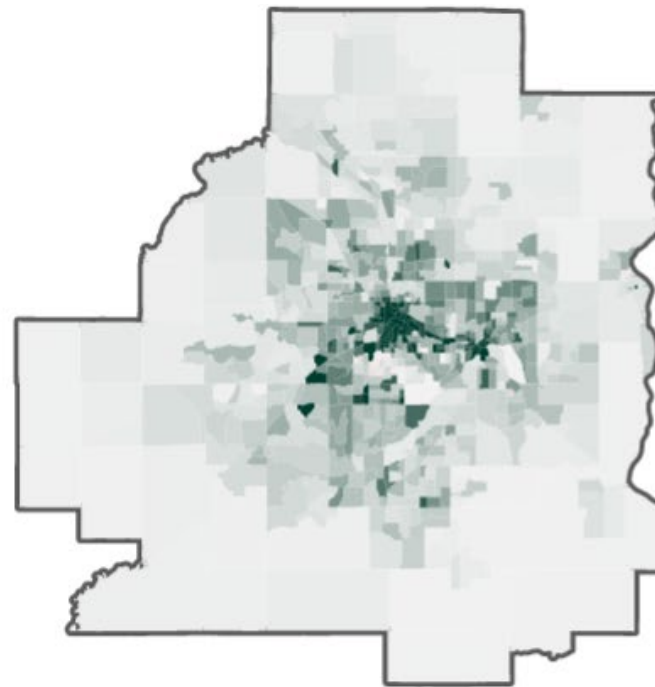
Higher growth, more compact



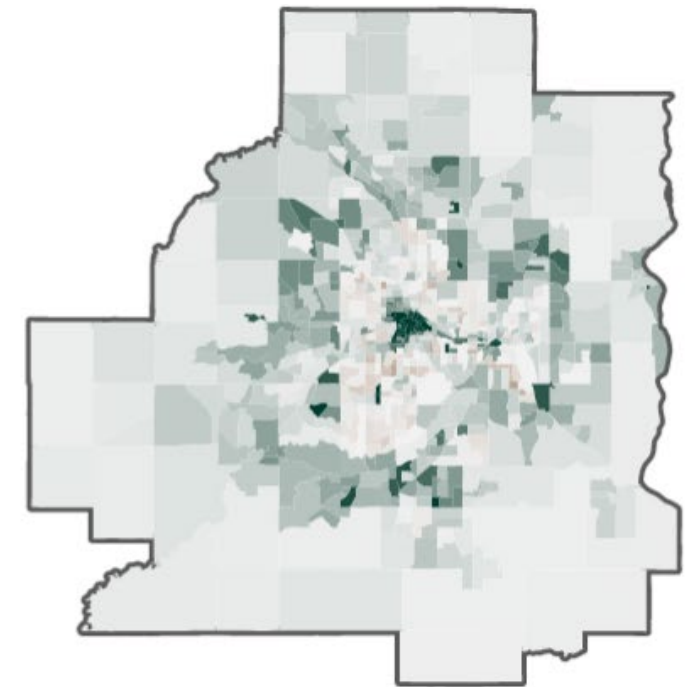
Higher growth, more dispersed



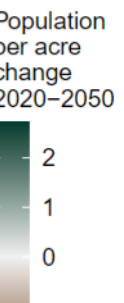
Lower growth, more compact



Lower growth, more dispersed



# Population Change per Acre, 2020-2050



# Upcoming discussions

- April 5 Committee of the Whole:  
Regional Forecast
- April 17 Community Development  
Committee: Scenario planning

# Discussion Questions

**In preparation for the April 17 presentation, start considering:**

- How would these futures affect the Council and the region?
- What are some opportunities and concerns related to different futures?
- How could the Council and the region be better prepared for these futures?



## **Joel Huting**

Senior Manager, Research, Community Development

[Joel.huting@metc.state.mn.us](mailto:Joel.huting@metc.state.mn.us)

[metro council.org/forecasts](http://metro council.org/forecasts)

