



Summit Avenue Regional Trail Long Range Plan, City of Saint Paul

Business Item 2023-146

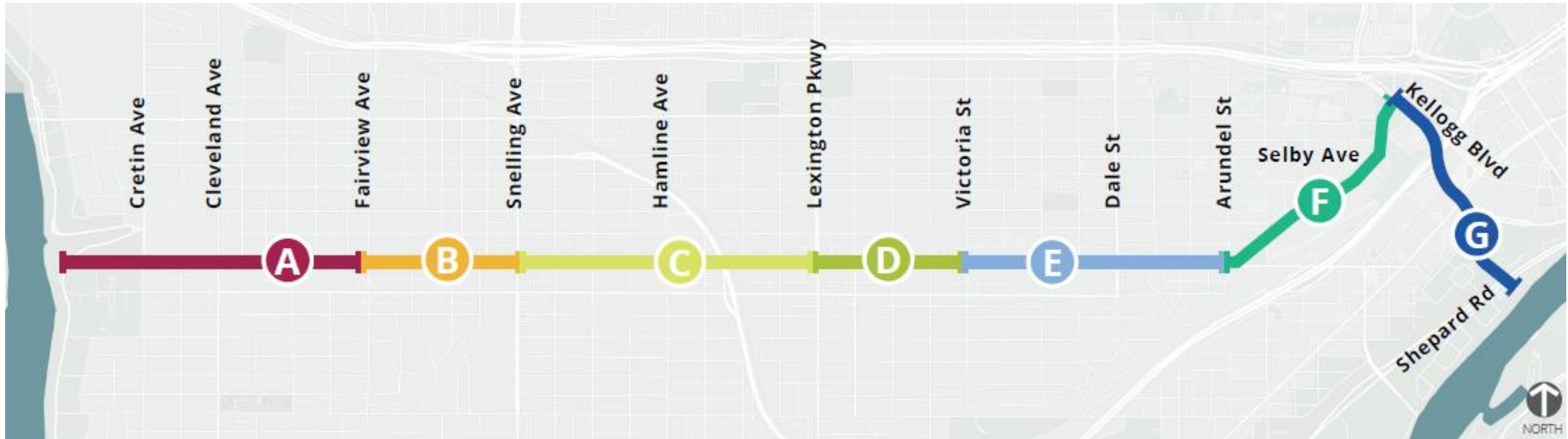
Community Development Committee



• August 7, 2023

Tracey Kinney, Senior Planner

Trail Alignment and Location



Segments A-F:

- 4.5 miles
- Summit Avenue from the Mississippi Gorge Regional Park to Kellogg Boulevard

Segments G:

- 0.75 miles
- Kellogg Boulevard/Eagle Parkway to Samuel Morgan Regional Trail at Shepard Road and the Mississippi River

Equity Analysis

Focused Engagements:

- **Accessibility Coordination:** Saint Paul's Adaptive Recreation program and the Mayor's Advisory Council.
- **Community Focused Events:** Neighborhood families and youth - Safe Summer Nights, Right Track Summer Celebration, Little Africa Festival 2022, and Downtown Saint Paul Mobility Mingle
- **Schools, Youth, Families:** Safe Routes to School and Saint Paul Youth Commission

Advice Shaped the Plan:

- **Accessibility:** Increase access by creating physical separation between vehicles and bicyclists.
- **Safety and Comfort:** Increase safety and comfort by providing separation from vehicle traffic and separation between bicyclists and pedestrians.
- **Diversity and Inclusion:** Develop future design and engineering processes to integrate community organizations early and often that can lead, inform, and shape a diverse representation of public art and cultural interpretation throughout the corridor.



Plan engagement events.

Public and Partner Engagement



Public Engagement

- **Engagement Activities:** In-person events, virtual drop-in sessions, Design and Technical Advisory Committee meetings, and a dedicated engagement website.
- **Key Themes** during the 90% draft plan engagement:
 - Safety
 - No change
 - Greenspace
 - Roadway
 - History

Partner Engagement

- **Agencies Engaged:** Ramsey County Public Works, Minnesota Department of Transportation, and State Historic Preservation Office through a Technical Advisory Committee.
- **Key Theme:** preferred one-way, curb separated facilities between the parking lane and the boulevard.

Plan engagement events.

Development Concept - Approach



Overall Concept: A one-way facility on each side of the Summit Avenue Parkway.

- *The preferred approach by both community members and by technical professionals as the safest option for this corridor.*

Plan Extras: Guidelines for trail parking, intersections, medians, connections to other park land and trails, driveway conditions, trash pick-up, wayfinding, trail amenities, furnishings, and public art.

Tree Preservation: Framework for pre-construction, during construction and post construction activities.

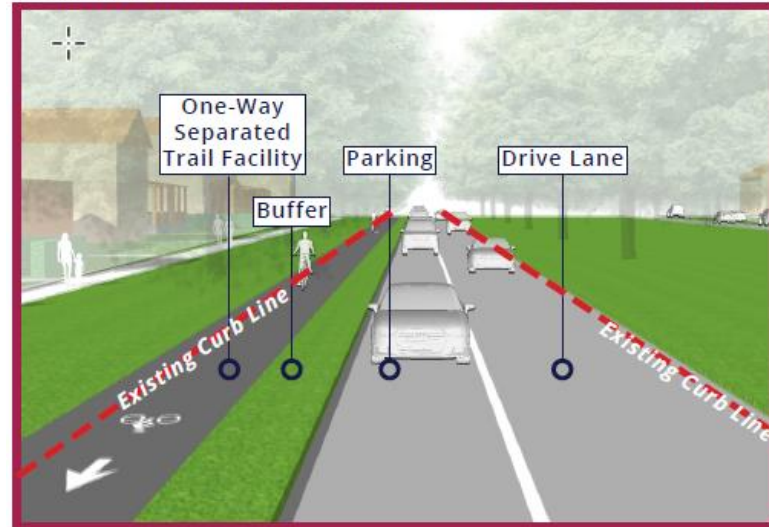
- *One-to-one tree replacement guideline for trees that need to be replaced.*

The tree canopy on Summit Avenue.

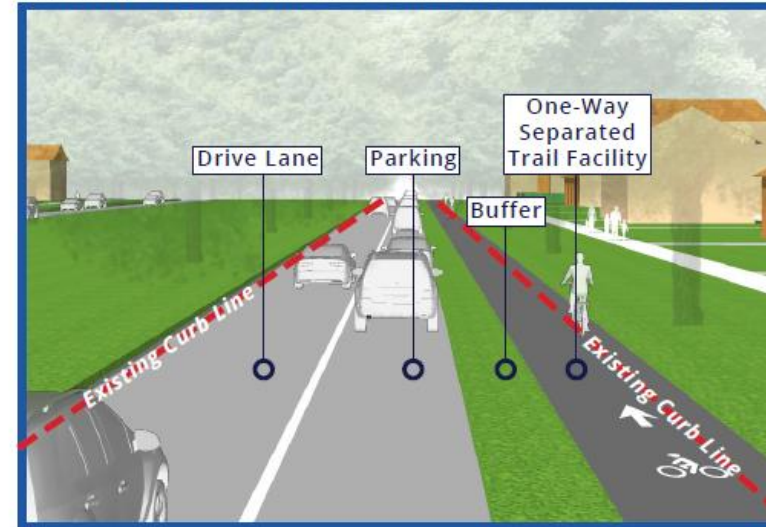
Development Concept – Trail Segments

Segments A&C

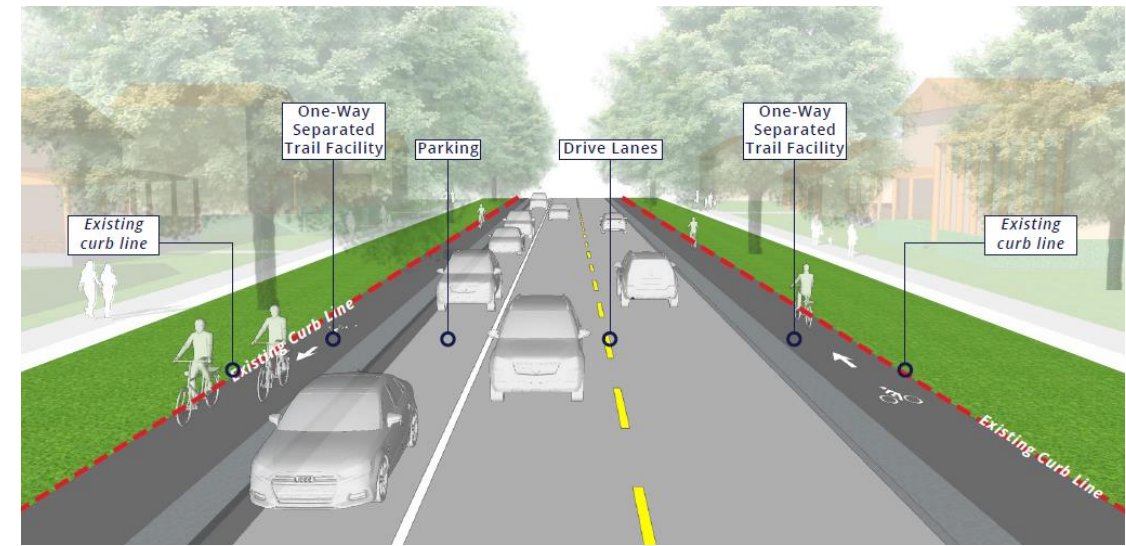
Roadway on south side of Summit Avenue - Eastbound



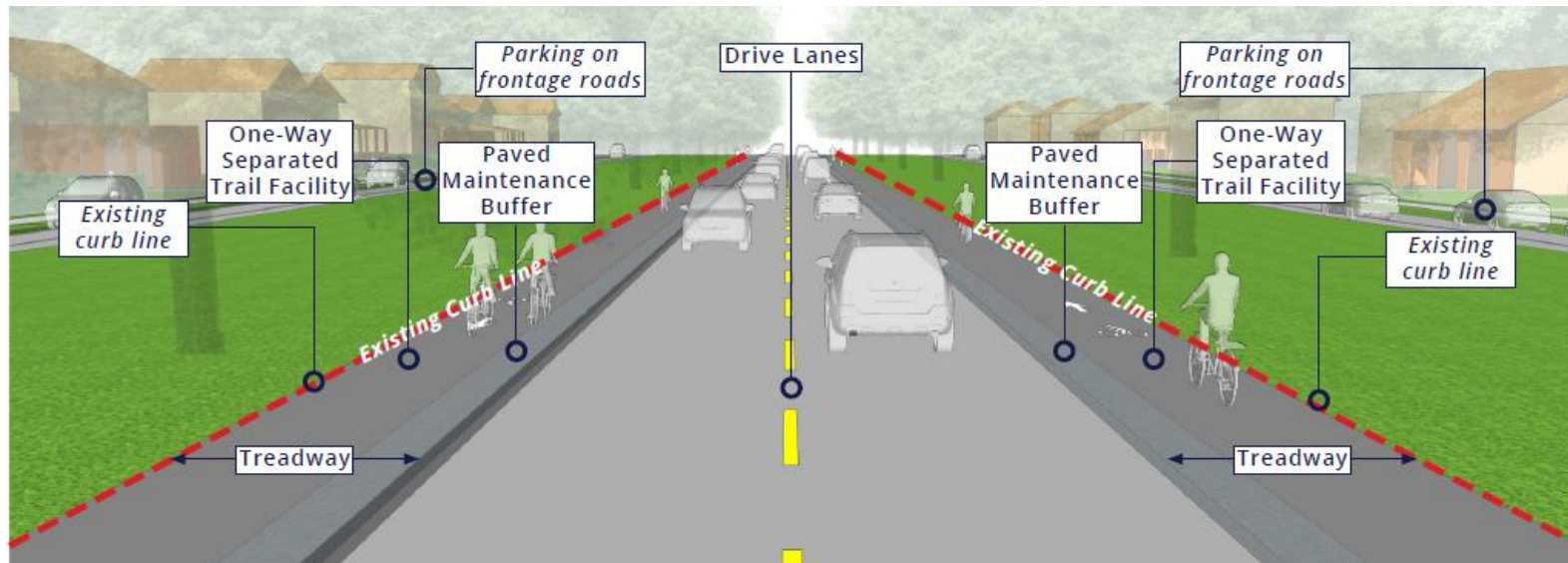
Roadway on north side of Summit Avenue - Westbound



Segments D, E, and F



Segment B

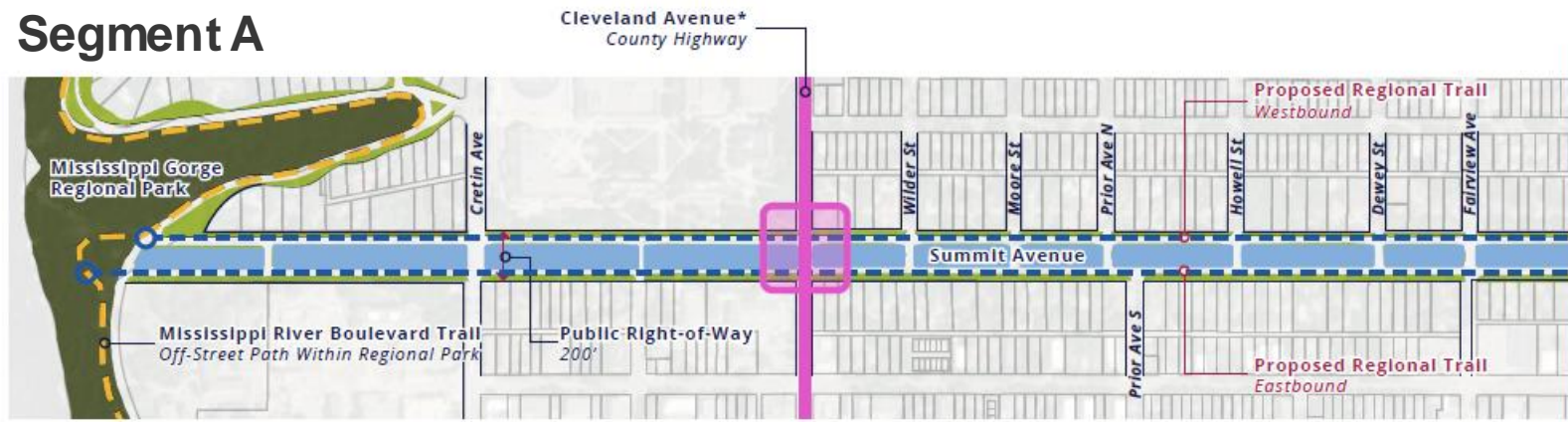


Segment G

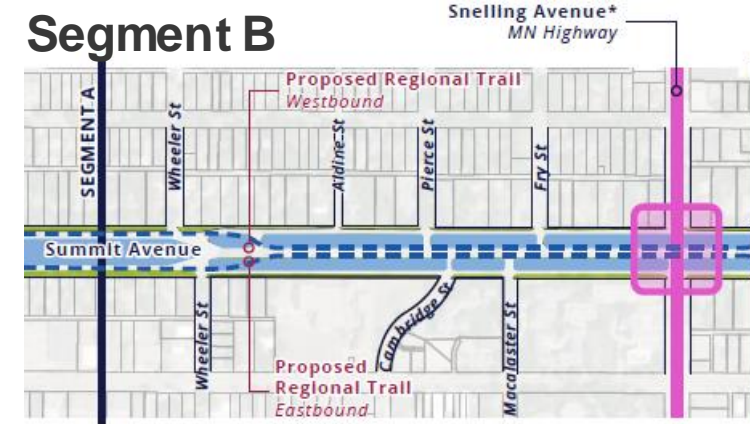


Boundaries – Segments A-E

Segment A



Segment B



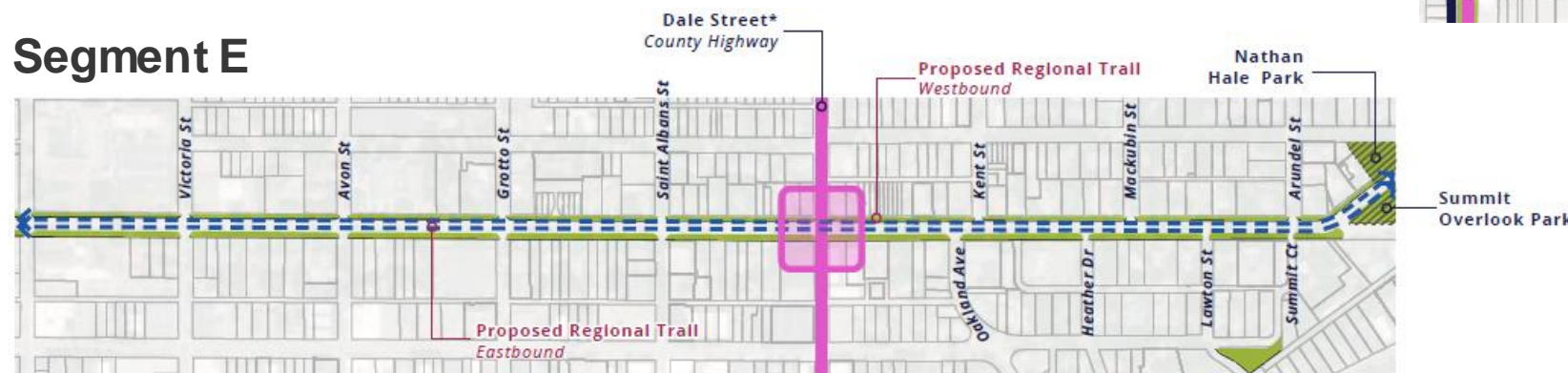
Segment C



Segment D



Segment E



Legend

- Proposed Summit Avenue Regional Trail
- Local Greenspace
- Proposed Regional Trail Corridor Land
- Regional Parkland
- Regional Trail
- Intersecting Road with Multiple Jurisdictions

Regional Trail Boundary

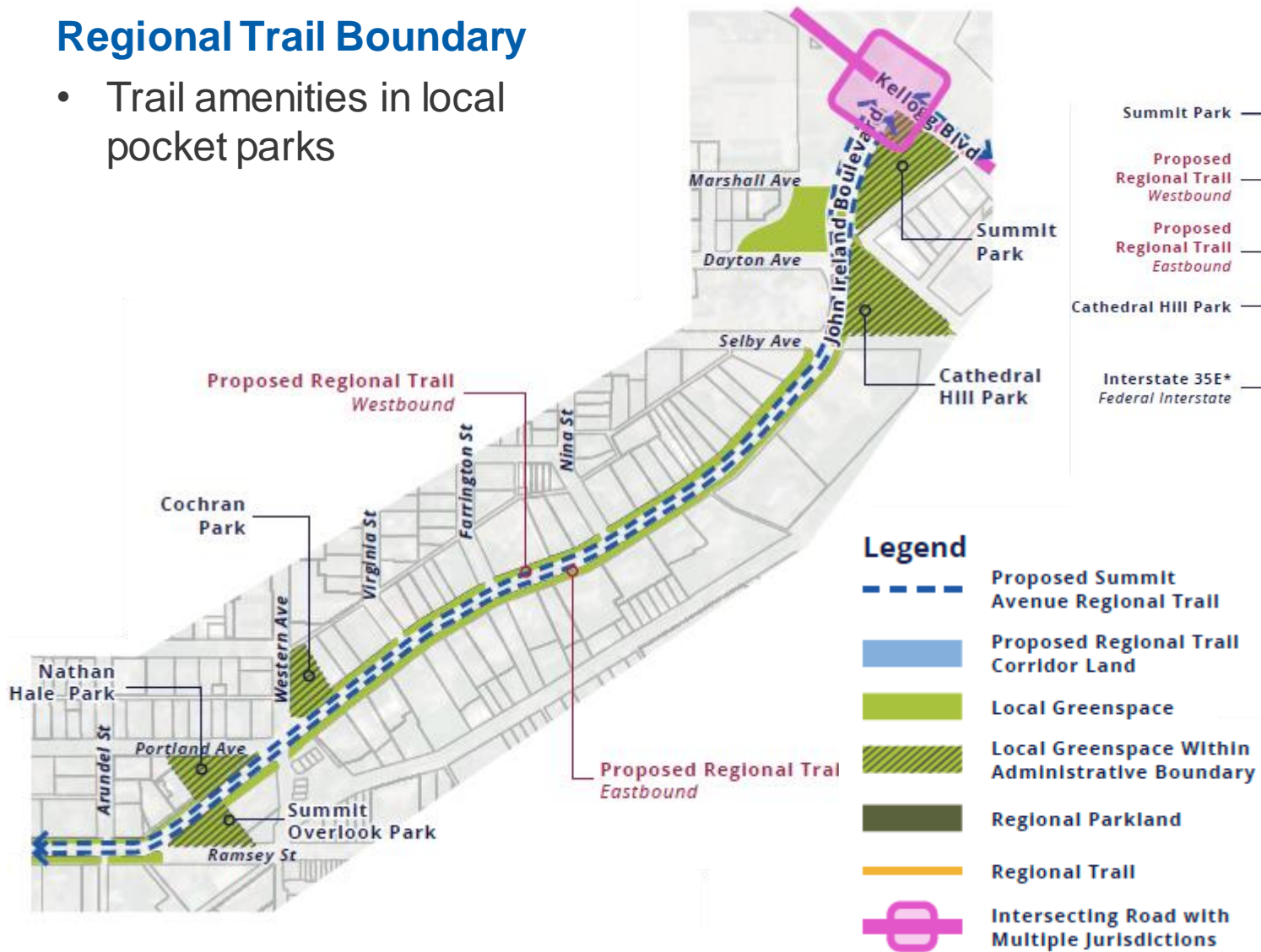
- Trail and maintenance buffer
- Central median, and service median Intersections
- Short Line Park

Boundaries – Segment F&G

Segment F

Regional Trail Boundary

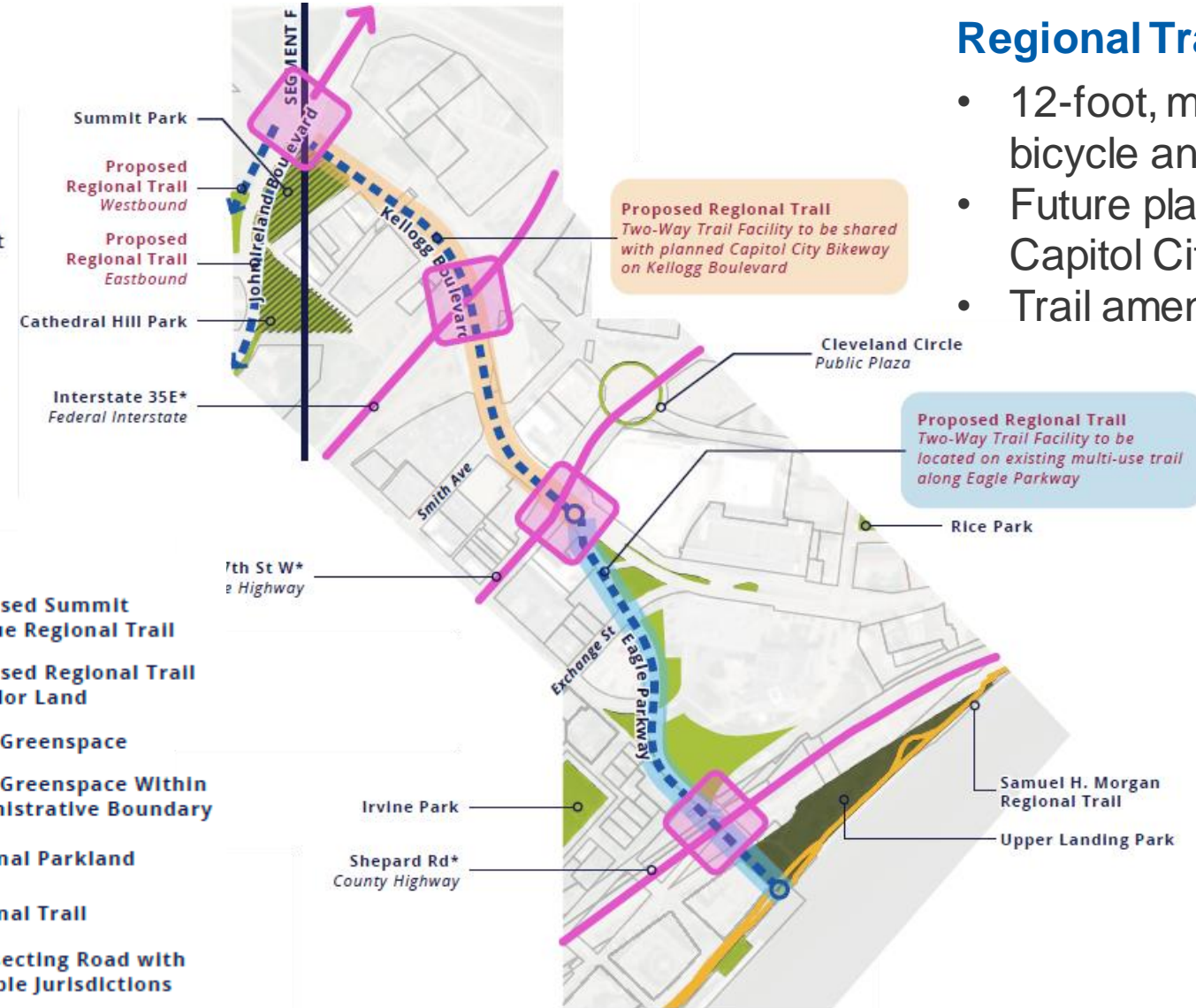
- Trail amenities in local pocket parks



Segment G

Regional Trail Boundary

- 12-foot, multi-use existing bicycle and pedestrian facility
- Future planning with the Capitol City Bikeway
- Trail amenities in local parks



Rationale for Proposed Action



A view of Summit Avenue.

The Summit Avenue Long Range Plan is consistent with the requirements of the:

- 2040 Regional Parks Policy Plan
 - Chapter 5, Planning, Strategy 1
 - Other Council policies

Costs

The total cost to develop the trail is approximately \$12,463,500 and \$70,000 annually for operations and maintenance.



A view of people biking on Summit Avenue.

Proposed Action



Summit Avenue lighting and street sign.

- That the Metropolitan Council:
1. Approve the Summit Avenue Regional Trail Long-Range Plan.
 2. Require Saint Paul, prior to initiating any construction to send preliminary plans to the Metropolitan Council Environmental Services Interceptor Engineering Assistant Manager.



Thank you

Tracey Kinney

Senior Planner, Community Development



A view of Summit Avenue and Mississippi River Boulevard.