



Scenario planning

What, why, how, and regional planning context



Today's Agenda



- Regional Planning Context
- Policy Development Process and Engagement
- Scenarios Planning
- Work Plan and Next Steps

Metropolitan Council Formation

Council formed in 1967

- Metropolitan Land Planning Act (MLPA)
 - Statutes 473.851 to 473.871
 - Metropolitan Council's responsibilities
 - Regional plans
 - Local comprehensive planning
 - Content requirements 473.859





“This Council was created to do a job which has proved too big for any single community.”

Gov. Harold LeVander

Managing Growth



Continued issues with growth in the region

- Recent *Ramapo* case (1972) established growth management planning as a valid exercise of police power
- Council contending with managing the negative effects of rapid and scattered development
- Few counties and municipalities planning for future development at that time
- Explore existing statutes and legal concepts for managing growth

Connecting Regional and Local Plans



Metropolitan Land Planning Act

Legislative Purpose

- To **establish requirements** and procedures to accomplish comprehensive local planning with land use controls **consistent with planned, orderly and staged development and the metropolitan system plans**
- To **provide assistance** to local governmental units within the metropolitan area for the preparation of plans and official controls appropriate for their areas and consistent with metropolitan system plans.



Image courtesy of Metropolitan Design Center Image Bank
© Regents of the University of Minnesota. All rights reserved. Used
with permission.

Statute Requires Development Guide

Metropolitan Land Planning Act (Minn. Stat. 473.145)

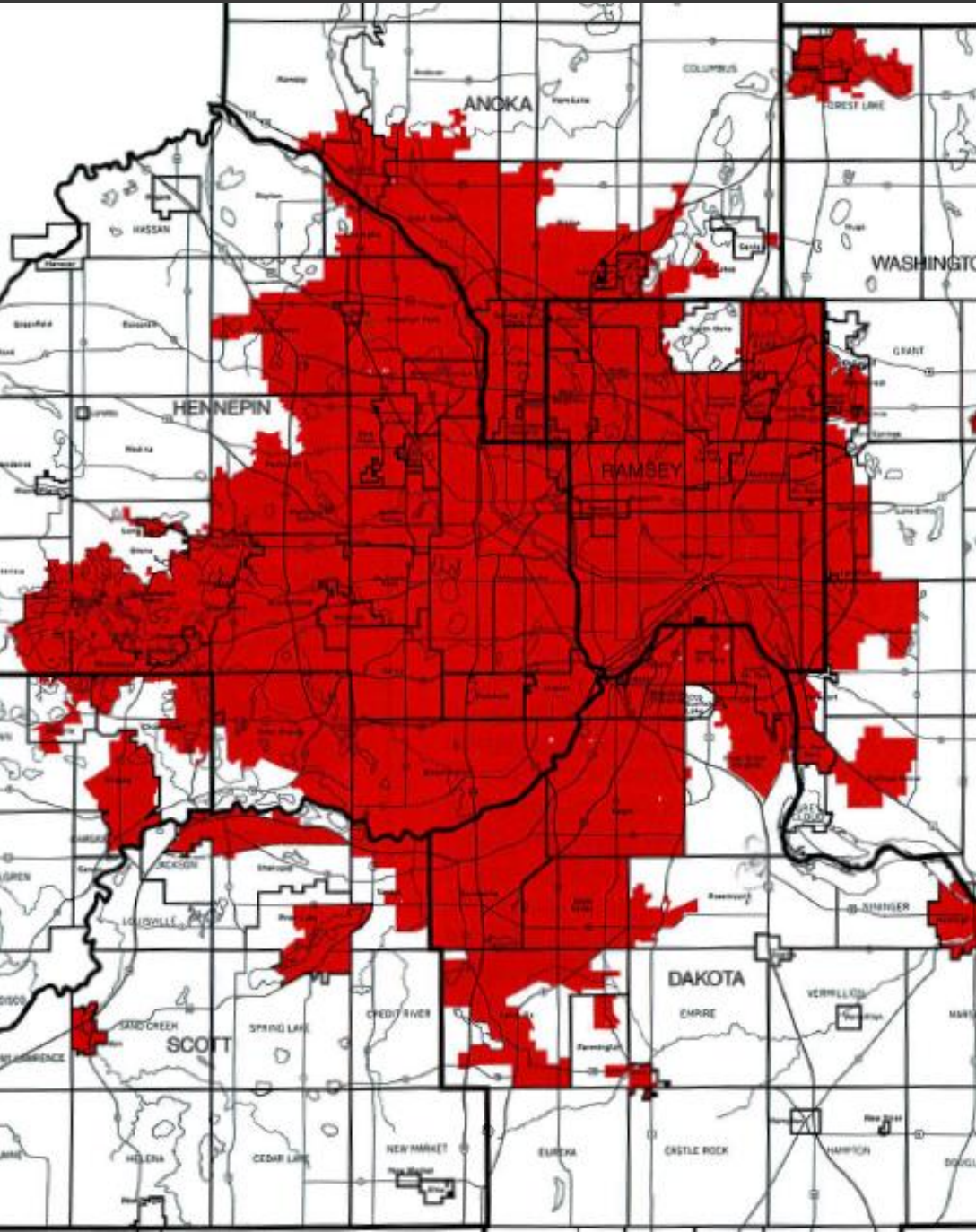
The Metropolitan Council shall prepare and adopt, after appropriate study and such public hearings as may be necessary, **a comprehensive development guide** for the metropolitan area...

Statute Requires Development Guide

Metropolitan Land Planning Act (Minn. Stat. 473.145)

... It shall consist of a compilation of policy statements, goals, standards, programs, and maps **prescribing guides for the orderly and economical development, public and private, of the metropolitan area.** The comprehensive development guide shall recognize and encompass **physical, social, or economic needs of the metropolitan area** and those future developments which will have an impact on the entire area including but not limited to such matters as **land use, parks and open space land needs, the necessity for and location of airports, highways, transit facilities, public hospitals, libraries, schools, and other public buildings.**

Council tools for managing growth



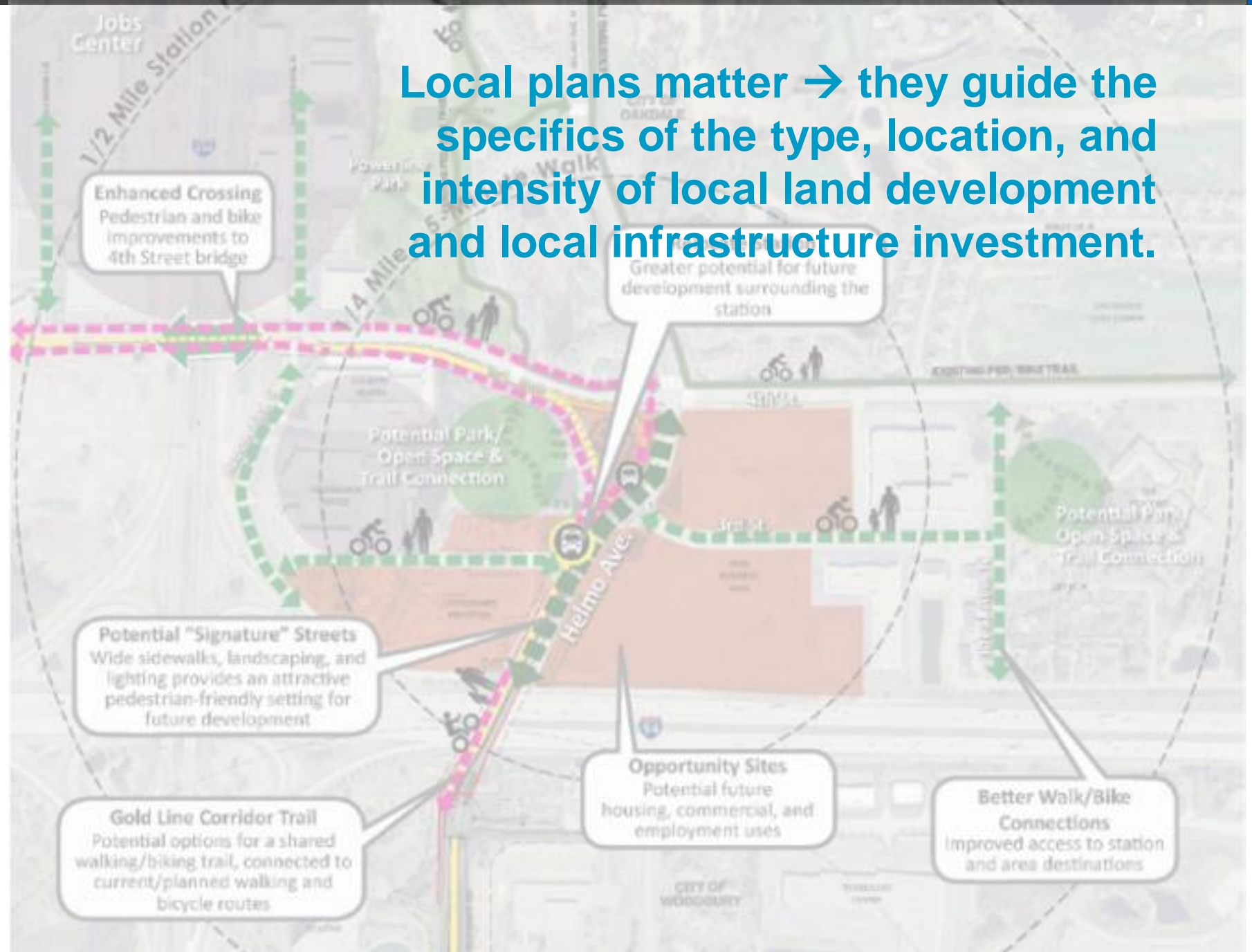
- Community designations (planning areas)
 - Related expectations for density and guiding/managing growth within a community
- Defining the Metropolitan Urban Service Area
 - Provision of wastewater services (or not)
 - Parameters for expansion
- Allocation of regional forecasted growth
- System Planning
- Local comprehensive plan requirements
 - Staging
 - Land use plans
 - Capital improvement plans

Framework for Local Planning

Regional plans set the broad context

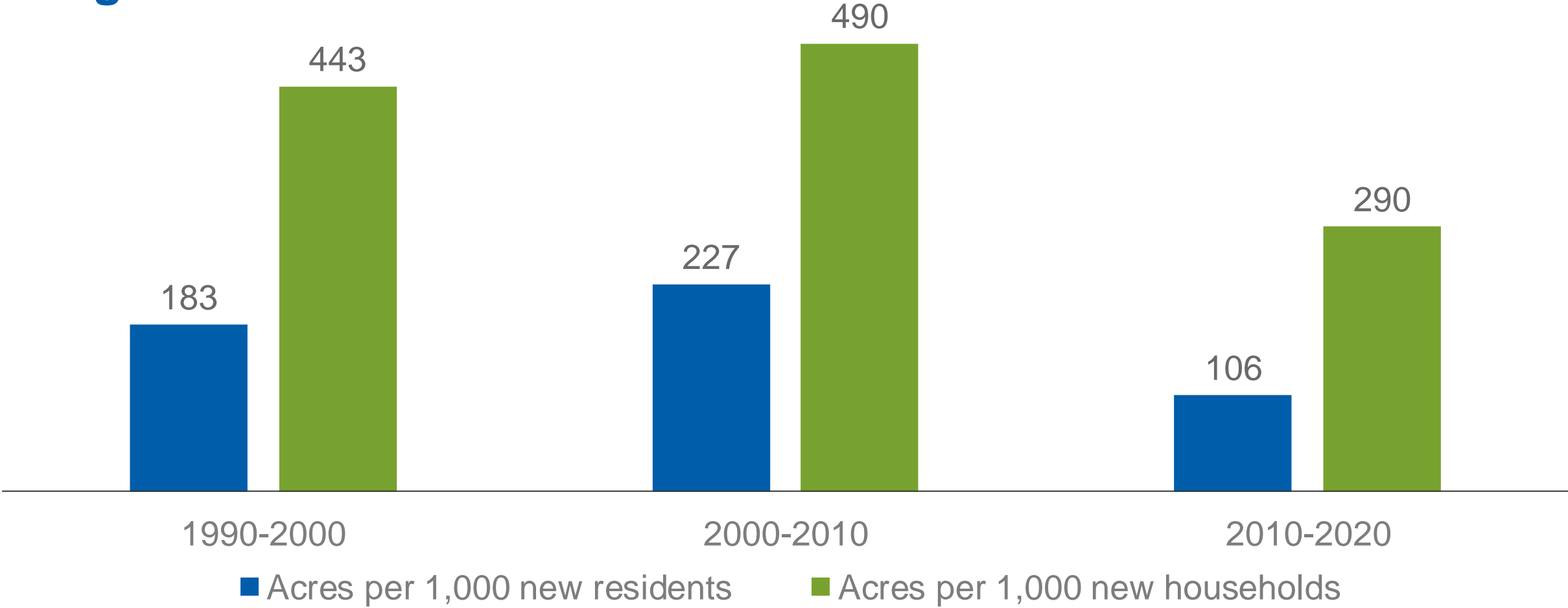
- Council roles & Community roles
- Expectations for supporting forecasted growth
- Expectations for planning/support regional infrastructure and connections with local infrastructure

Local plans matter → they guide the specifics of the type, location, and intensity of local land development and local infrastructure investment.



Results Over the Decades

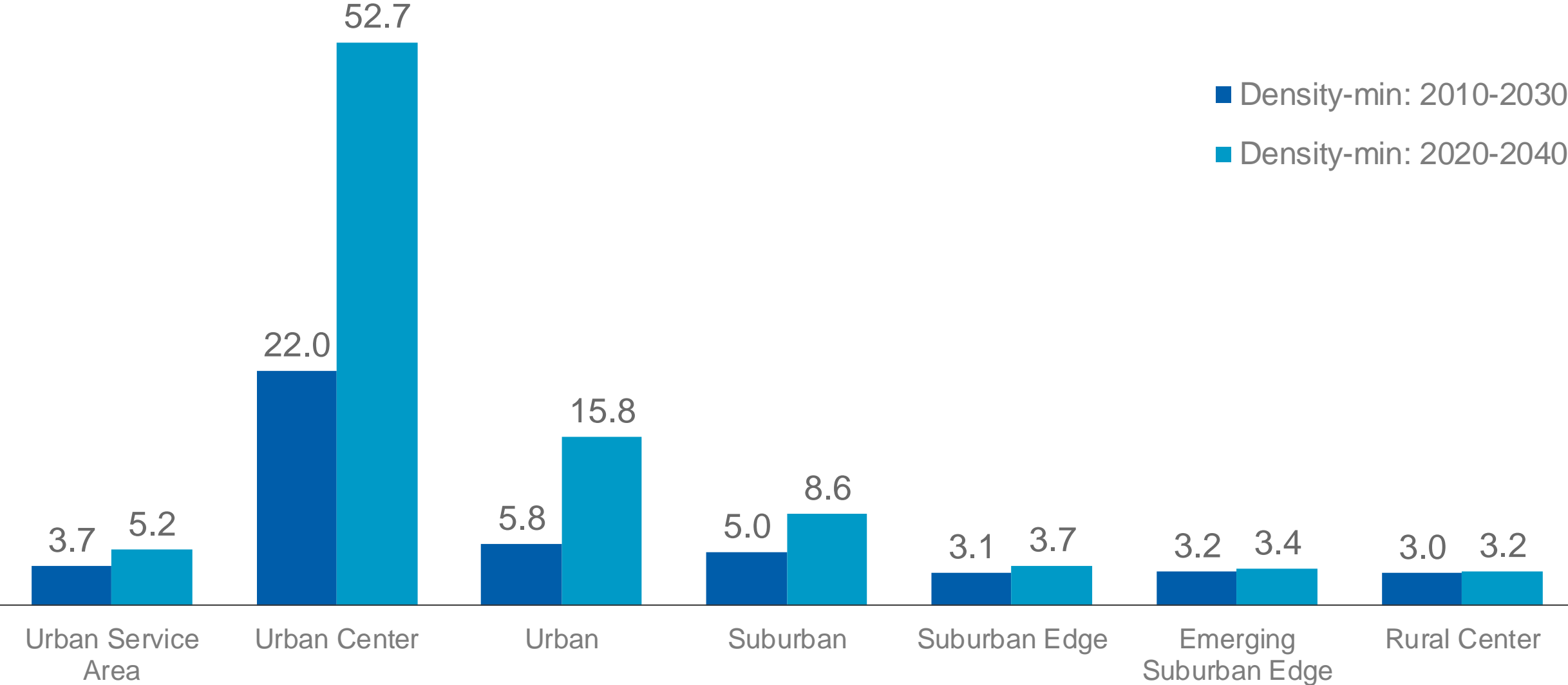
Land use consumption per 1000 residents and per 1000 households has gone down



Source: Metropolitan Council, 2020 Generalized Land Use Inventory; Metropolitan Council Population Estimates

Local Planning Trends

Local governments have increased planned residential densities in their comprehensive plans



Past decisions reverberate across the region



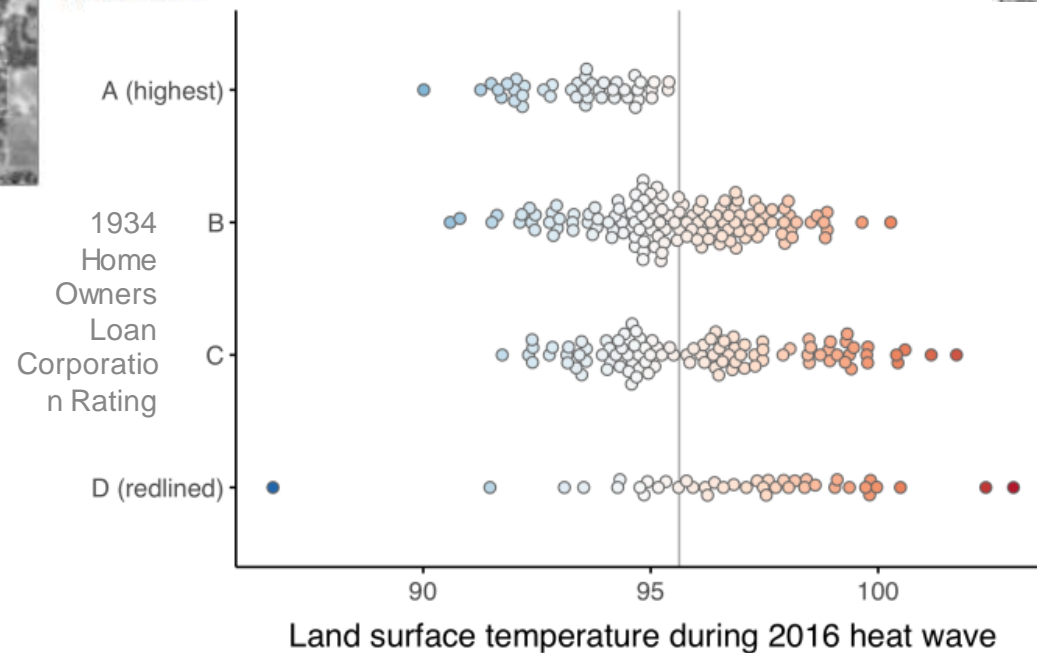
1953



1990

These two photographs show the fragmentation of dry oak savanna and dry prairie barrens near Bunker Lake in Anoka County between 1953 and 1990. With the progressive loss of habitat in the Bunker Lake area there has been a significant decline in plants and animals as well.

The Rondo neighborhood, mid-demolition.
Courtesy: Minnesota Historical Society

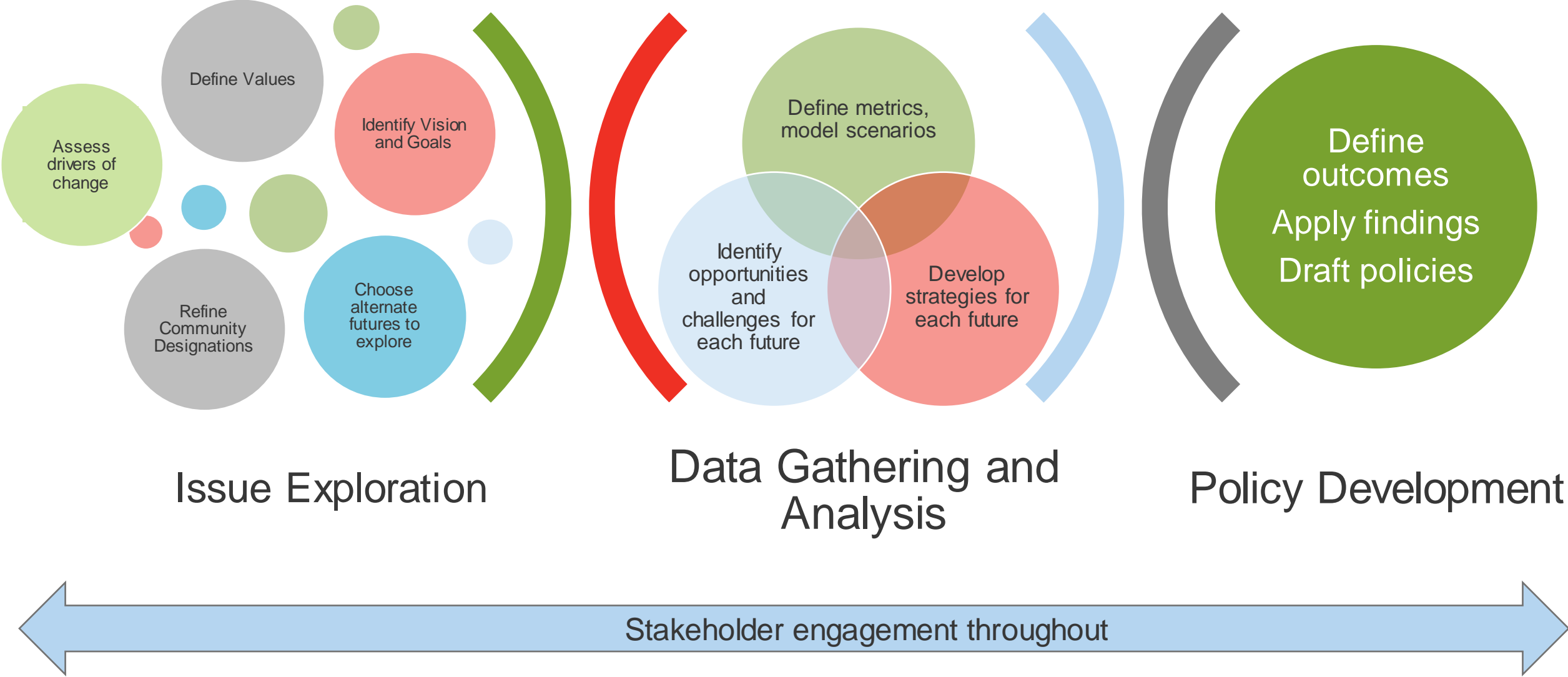


Source: Analysis of Landsat 8 satellite imagery (2016) and Equity Considerations dataset (2021)

Policy Development Process and Engagement



Policy development process



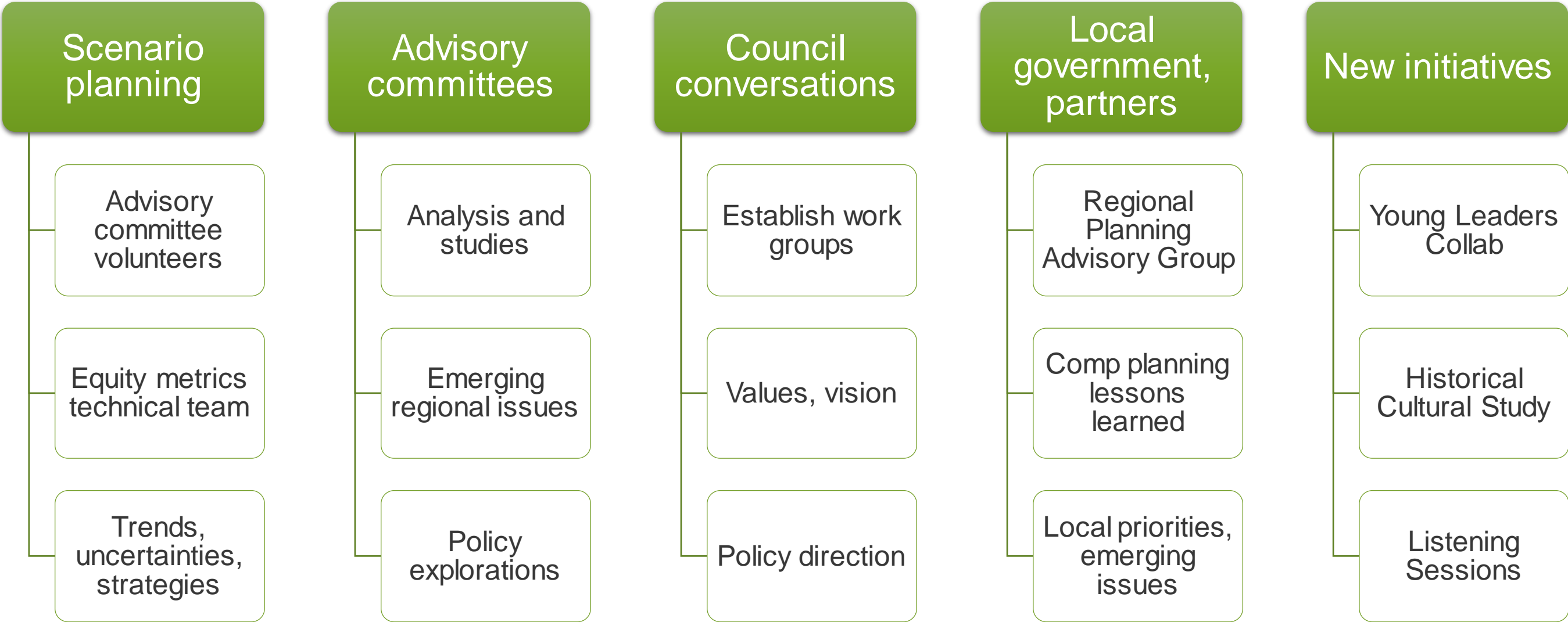
Policy Impacts



Outcomes

- Market influence
- Character of the built environment
- Advance desirable outcomes
- Mitigate negative effects
- Achieve the regional vision
- Reflect regional values

Early-stage engagement



Engagement

Ongoing work

- Local governments and established partners
- Sector Representatives
- Standing meetings/groups
- Council meetings, Committees, and Work Groups
- Cross-divisional collaboration
- Professional organizations and conferences

Broad Engagement

- Targeted and Specific Outreach
- Topic-based Engagement
- Constituent Cohorts
- Virtual Town Halls
- Surveys/Forms or other electronic feedback

New Efforts with Existing Partners

- Regional Planning Advisory Group with Metro Cities
- Tribal Consultation and urban Indian organizations
- Center for Economic Inclusion and Greater MSP
- Governor's Council on Age-Friendly MN
- Local Planning Stories shared by city, township, or county staff
- Center for Urban and Regional Affairs (CURA) at UofM

New Initiatives

- Young Leaders Collab
- Historical-Cultural Study
- Land Use Policy Cohorts
- Rural Focus Groups with MN Dept of Ag
- Climate and Natural Resources Policy Focus groups
- Environmental Justice Framework Advisory Group

Communicating the work

- Policymakers
 - Building a shared knowledge foundation
 - Panels and presentations
 - City stories
 - Policy plan updates
- Internal coordination
 - Weave it into regular work
 - Sector Reps and LCA daily experiences
 - Technical expertise
- Engagement cohorts
 - Young Leaders Collab
 - Regional Policy Cohorts



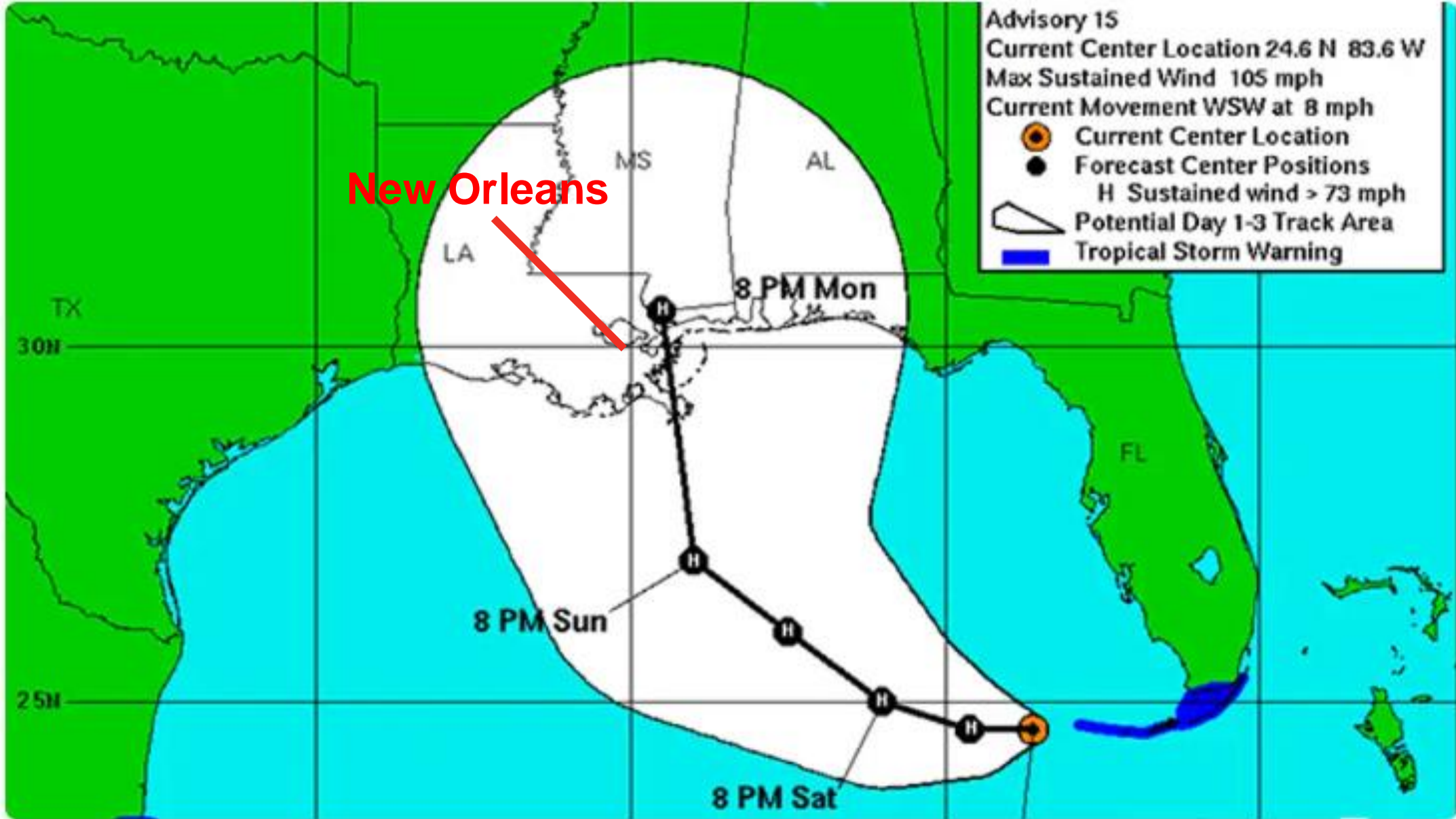
Scenarios: What, why, how, and regional planning context



Katrina Forecast 8/26/2005 11:00 a.m.

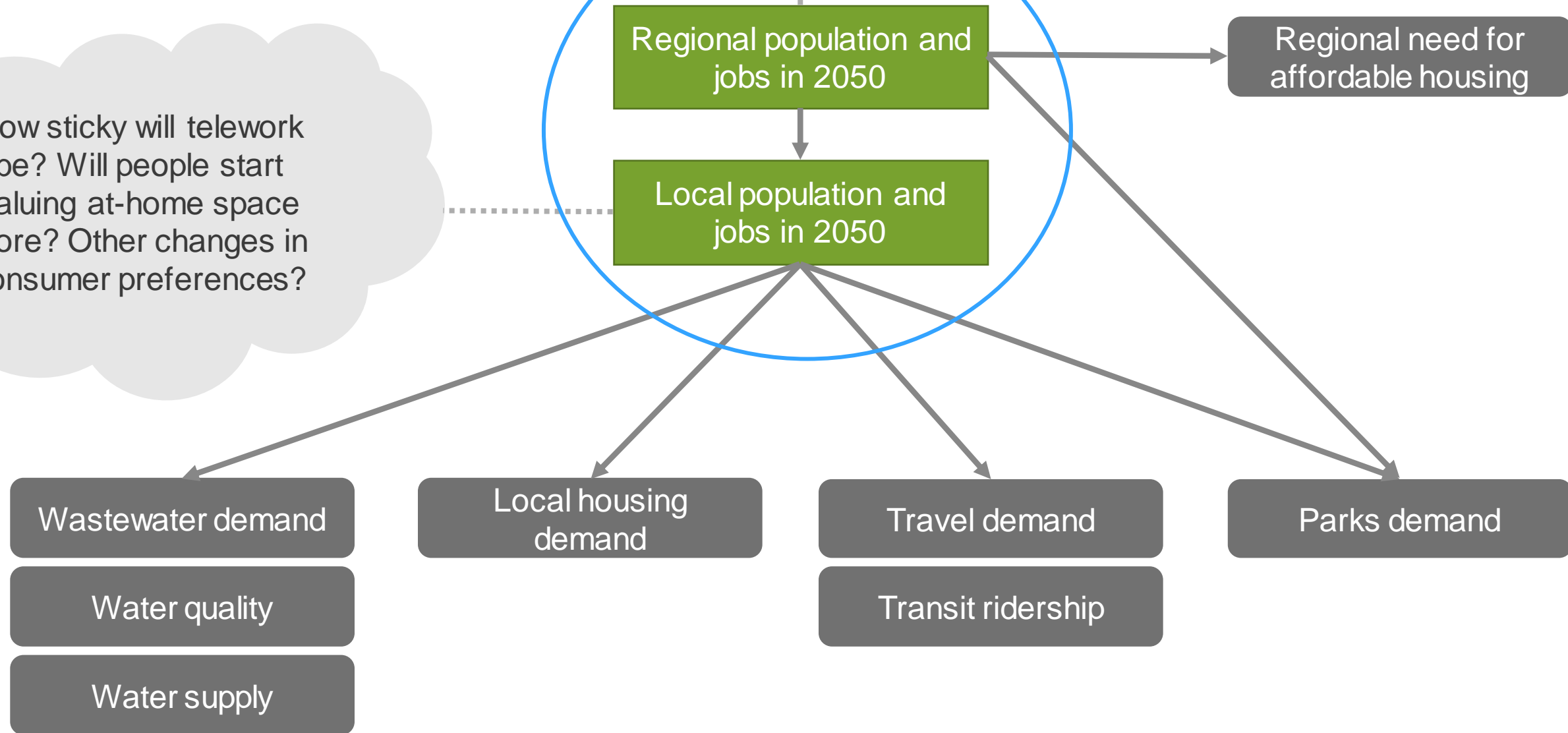


Katrina Forecast 8/26/2005 11:00 p.m.



How will the pandemic affect birth rates? How will telework impact net migration to the region? How many climate refugees will we get? Will immigration levels change?

How sticky will telework be? Will people start valuing at-home space more? Other changes in consumer preferences?



Scenario planning



Why are we doing this?

- We don't know exactly what the future will bring
- Uncertainties around residential preferences
- **Scenario planning represents the plausible range of growth under existing policy constraints**
- Helps our plans and policies to be more robust, resilient, and responsive
- Beyond growth scenarios, scenario thinking is a good idea
 - Sackett v. EPA ruling

Work Plan and Next Steps



2023 – 2024 CDC Work Plan



2050 Regional Development Guide

- Regional vision and values
- Community designations
- Scenario planning
- Regionally Significant Ecological Areas
- 2050 Forecast development
- Land use policy discussions
- Regional parks policy discussions
- Housing policy discussions
- Other studies as needed
- Updates on engagement efforts

<https://metro council.org/Council-Meetings/Committees/Community-Development-Committee/2023/February-6,-2023/info-item.aspx>

Questions and Next steps

Questions and Direction

- Are there areas to provide more clarity?
- What has resonated with you and what hasn't?
- Do you need to hear more on anything else?
- Do you have any advice going forward?

Next Steps

- Discussion of scenario planning findings for remaining policy areas
- Further discussion of opportunities and challenges for potential futures
- Strategy development
- Develop land use objectives for managing regional growth and development
- Draft policies for consideration

Questions?

LisaBeth Barajas

Executive Director, Community Development

Lisa.Barajas@metc.state.mn.us

(651) 602-1566

Angela R. Torres, AICP

Senior Manager, Local Planning Assistance

angela.torres@metc.state.mn.us

(651) 602-1566

Joel Huting

Senior Manager, Research

joel.huting@metc.state.mn.us

(651) 602-1349

