



# Proposed LCA Program Update Work Plan

Community Development Committee



March 18, 2024 [metro council.org](https://metro council.org)

# Today's Discussion

## Agenda

- Proposed Goals for 2025 LCA Program Update
- Roles and sources of input
- Committee Discussion
  1. Are these proposed goals the right focus?
  2. What opportunity do you see for continued/better alignment with Imagine 2050?



# Proposed Goals for Program Update



- Ensuring the **alignment of program design with the regional goals** for Imagine 2050
- Encouraging **broad participation** from communities in the region and **reducing barriers to entry**

# Statutory Guidance

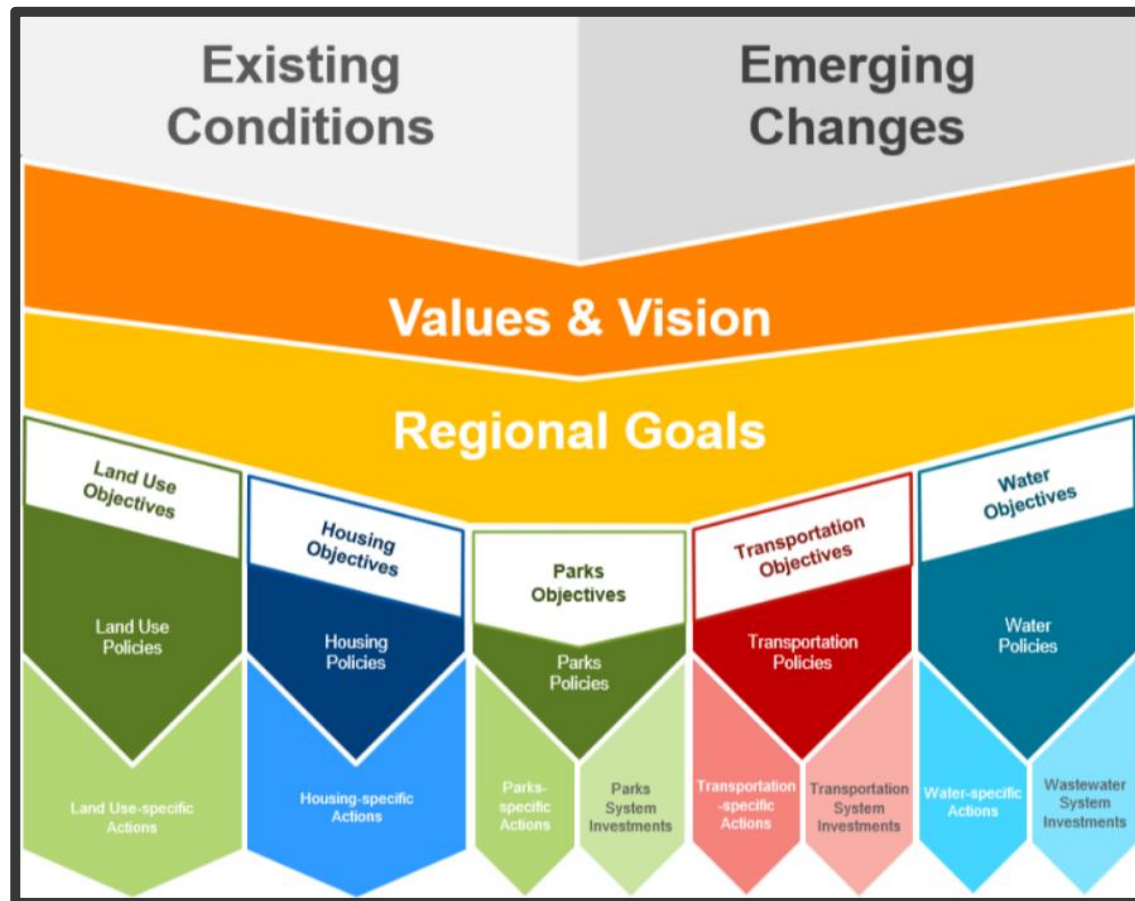


The Livable Communities Act directs the Council to “establish criteria for uses of the fund ... that are consistent with and promote the **purposes of this article** and the **policies of the Metropolitan Development Guide adopted by the council** including, but not limited to:

- (1) helping to change long-term market incentives that adversely impact creation and preservation of living-wage **jobs** in the fully developed area;
- (2) creating incentives for **developing** communities to include a full range of **housing** opportunities;
- (3) creating incentives to **preserve and rehabilitate affordable housing** in the fully developed area; and
- (4) creating incentives for all communities to implement **compact and efficient** development.”

# Imagine 2050 – Structure, Vision, and Goals

## Structure



## Vision *(Council endorsed)*

*“A prosperous, equitable, and resilient region with abundant opportunities for all to live, work, play, and thrive.”*

## Goals

### Our Region is Equitable and Inclusive

Racial inequities and injustices experienced by historically marginalized communities have been eliminated; and every person feels welcome, included, and empowered.

### Our Communities are Healthy and Safe

All our region’s residents live healthy and rewarding lives with a sense of security, dignity, and wellbeing.

### Our Region is Dynamic and Resilient

Our region meets the opportunities and challenges faced by our communities and the economy including issues of choice, access, and affordability.

### We Lead on Addressing Climate Change

We have mitigated greenhouse gas emissions and have adapted to ensure that our communities and systems are resilient to climate impacts.

### We Protect and Restore Natural Systems

We protect, integrate, and restore natural systems to protect habitat and ensure a high quality of life for the people our region

# Council & Committee Roles

## *Summer*

- Engagement: Identified member liaisons will listen in focus groups
- Workshop session: Members help to identify connections across regional policy goals

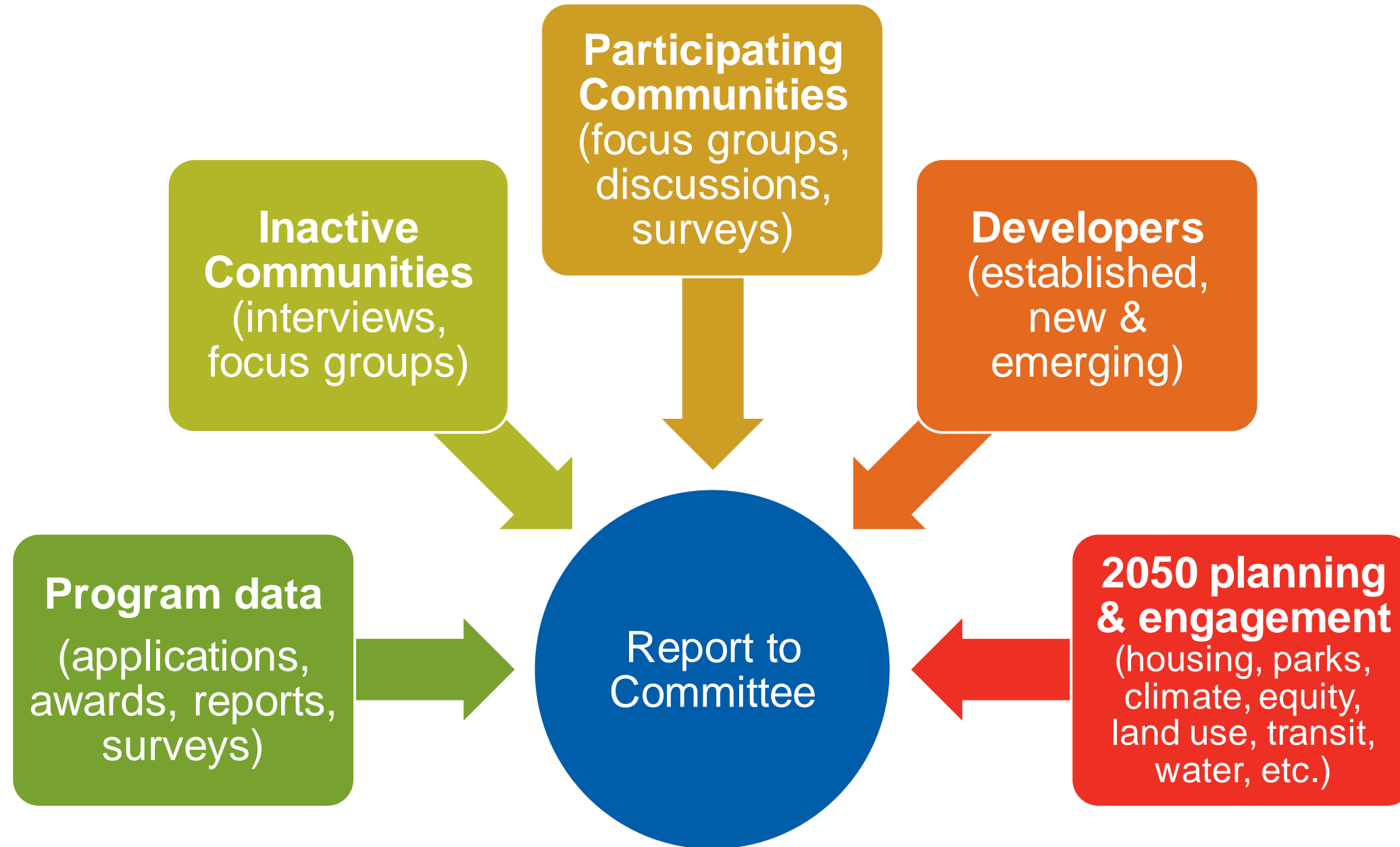
## *Fall*

- Receive consultant report
- Provide high-level recommendations for 2025 implementation
- Identify ideas that require research and development for future years

## *Winter*

- Approve Fund Distribution Plan for 2025 program year (annual process)

# Sources of Input for Program Update



# What does success look like this year?

- ✓ Committee agrees on **program goals**
- ✓ Program goals are **consistent with:**
  - ✓ Statute
  - ✓ Imagine 2050  
Regional Goals
- ✓ **Staff can use identified goals** to develop and refine programs for 2025 and beyond





# Discussion



1. Are these two proposed goals the right focus for this year's work?

- Ensuring the **alignment of program design with the regional goals** for Imagine 2050
- Encouraging **broad participation** from communities in the region and **reducing barriers to entry**

2. What opportunity do you see for continued/better alignment of LCA programs with the Imagine 2050 regional goals?



## **Sarah Berke**

Senior Manager, Livable Communities and Housing  
Community Development

[sarah.berke@metc.state.mn.us](mailto:sarah.berke@metc.state.mn.us)

