



# Release the Public Comment Draft of Imagine 2050

Community Development Committee

August 5, 2024



# Today's Conversation



Engagement Approach

Focus for 2050 & Key Takeaways

- Regional Goals
- Land Use
- Housing
- Parks

Next Steps

Proposed Action

# Engagement Approach

## Building on Studies and What We Have Already Heard

- Regional Parks Visitor Study
- 2040 local comprehensive plans
- 2040 comprehensive plan debrief
- Art Shanty – love letters
- Sector Representative program
- Everyday feedback and engagement everyday with residents, partners
- Regular monitoring and reporting:
  - Development trends
  - Land use inventory
  - U.S. Census and annual population estimates
  - Affordable housing production
  - Annual parks use estimates
  - And more

## Community centered: Focus on resident voices, particularly underrepresented and historically marginalized groups

- Formal, extended series groups:
  - American Indian Advisory Council
  - Young Leaders Collaborative
  - Community Leaders Collaborative
- Additional venues:
  - Focus group conversations
  - Workshops
  - Surveys

## Working and Technical Groups: representatives from local governments, organizations, and other stakeholder groups

- Regional Planning Advisory Group
- Housing Policy Technical Advisory Group
- Community Designations Focus Group
- Community Leaders Technical Advisory Group
- Rural and Agricultural Policy Engagement Series
- Regional Climate and Natural Systems Work Group
- Regional Climate and Natural Systems Technical Advisory Team
- Regional Park Implementing Agency – monthly partner meetings
- Regional Parks Technical Work Groups

# Regional Vision

*A prosperous, equitable, and resilient region with abundant opportunities for all to live, work, play, and thrive.*



# Regional Goals



## **Our region is equitable and inclusive.**

Racial inequities and injustices experienced by historically marginalized communities have been eliminated; and all people feel welcome, included, and empowered.

## **Our communities are healthy and safe.**

All our region's residents live healthy and rewarding lives with a sense of dignity, and wellbeing.

## **Our region is dynamic and resilient.**

Our region meets the opportunities and challenges faced by our communities and the economy including issues of choice, access, and affordability.

## **We lead on addressing climate change.**

We have mitigated greenhouse gas emissions and have adapted to ensure that our communities and systems are resilient to climate impacts.

## **We protect and restore natural systems.**

We protect, integrate, and restore natural systems to protect habitat and ensure a high quality of life for the people of our region.

# Land Use Policy



# Focus for 2050



## A people-centered approach

Elevate the voices of underrepresented communities; value their feedback in equal measure; and consider the individual experience within the built form.

- Land use is more than orderly and economical development:  
*“must recognize and encompass physical, social, or economic needs of the metropolitan area...”* Minn Stat. § 473.145

**Work from the perspective of what it will take to achieve the regional goals while addressing key land use and regional growth issues.**

- Manage growth responsibly and respectfully
- Align need with opportunity
- Build community connections
- Natural systems
- Climate resilience
- Equitable development
- Economic wellbeing

# Land Use Policy

## Key research

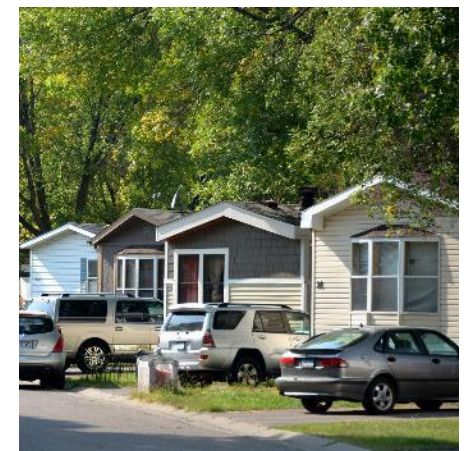
- 2020 land use inventory
- Scenarios Planning analysis
- Community designations analysis
- Regional forecasts
- Land use and development trends
- Density and transit station area analysis

## Key messages

- Efficient land use practices reduce the cost of infrastructure investments and service expansion
- Compact development happens in all community types

## Broad changes

- Integrate American Indian perspectives in land management guidance
- Re-introduce previous land planning tools
- Residential and station area density policies
- Stronger rural and ag area protections; protect natural systems as part of development
- Integrate universal design concepts
- Allow for a diversity of housing types in all residential use categories
- Build capacity for communities to engage in government planning processes
- Reduce GHG emissions and adapt to climate change via land use & development practices; respond to new statutory requirements
- Support actions towards a more just economy





# Next Steps for Land Use Policy

## Path toward policy adoption

- Council will continue to discuss
  - Residential and Transit Station Area density policies
  - Criteria for MUSA Expansion
- Updates to Community Designations, where appropriate
- Respond to recommendations from the American Indian Advisory Council
- Identify evaluation, metrics, and measurements
- Develop implementation work plan items
- Ongoing cross-divisional team coordination throughout the public comment process
  - Integration Team and Policy Leads Team
  - Equity Task Force and Environmental Justice Task Force



# Housing Policy



# Focus for 2050



The right to housing is a foundation for health, social and economic well-being. This plan guides the region to create safe, dignified and affordable homes that give all residents a choice of where to live.

# Housing Policy Plan Landscape

## Context for the plan

More diverse region

Sustained and growing wealth gap

Affordable housing needed in all communities

Older population housing needs

Accessible housing

Ownership options

Housing stability as a foundation

Homes, not just housing

Repairing historic and ongoing harm

More extreme weather events & climate



# Housing Policy Plan Implementation



## Roles, responsibility, & implementation

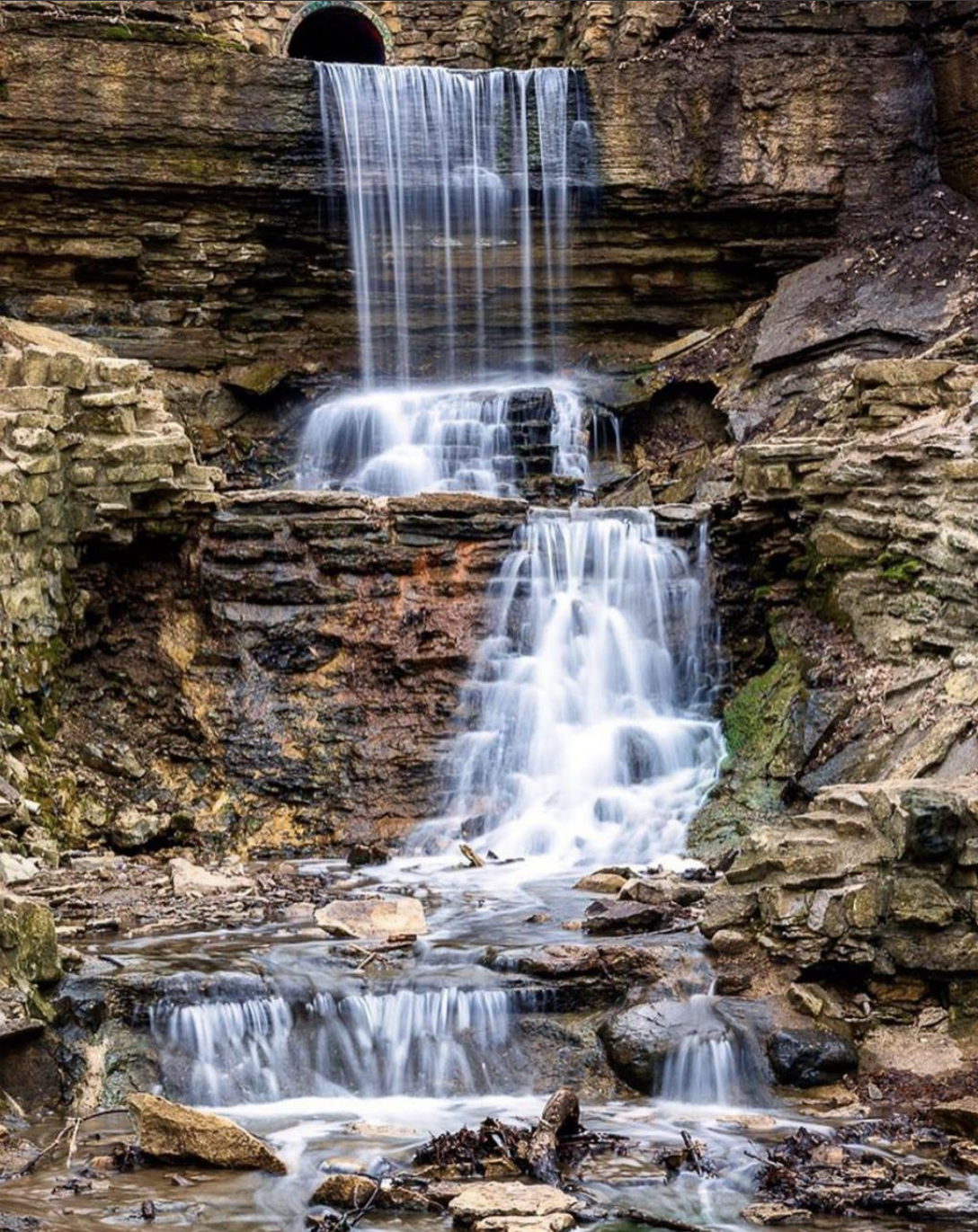
- Housing requirements for comprehensive plans
- Current and future affordable housing need\*
- Land guided for affordable housing\*
- Housing implementation plan\*
- Affordable & Life-Cycle housing goals
- Livable Communities Act
- Expanded technical assistance & research
- Partnerships across the region

\*Updates for 2050!

# Regional Parks and Trails Policy



# Parks and Trails Policy Plan



## Key Takeaways for 2050

### Overview

- New strategic framing with Parks and Trails System Vision, Mission, Values, and Objectives.
- \$1.25 billion: Total State and regional funding investments, 1974-2024.

### System Plan

- New policy and three actions focused on maintaining data, maps, plans and more in support of the System.
- Modified Special Recreation Features to Special Features and added new Cultural Landscapes sub-classification.
- \$3 billion: 2024 Cost to Complete the System.

### Natural Systems

- New policy and actions emphasizes importance of natural systems with Parks and Trails System.
- Reframed “Siting and Acquisition” policy.
- Added narrative around system addition process; key factors of natural systems foundation, geographic distribution, and equity.

# Parks and Trails Policy Plan



## Key Takeaways for 2050

### Climate Resilience

- Emphasized Council's commitment and role supporting climate research, agency coordination, public awareness and education.

### Planning

- Streamlined planning requirements into 3 groupings: Engagement, Development Concept, and Natural Systems
- Clarified long-range plan amendment types

### System Protection

- Streamlined and clarified system protection and land conversion language.



# Parks and Trails Policy Plan



## Key Takeaways for 2050

### Recreation, Facilities, and Programming

- Integrated and strengthened equity throughout actions.
- Established more flexible criteria for recreation activities and facilities eligibility. Removed static activities list.
- Strengthened Council commitment to better coordinate the Regional Trail System and the Regional Bicycle Transportation Network.

### Finance

- Summarized and clarified statutory requirements.
- Formalized commitment to Equity Grant Program.
- Increased Park acquisition opportunity fund cap:
  - Legacy - \$1.7 million to \$2 million
  - ENRTF - \$1.7 million to \$3 million.
- Added action committing Council to actively analyze Council's regional funding strategy to pursue increased funding.

### 2025-2028 Workplan

- Setting up plan implementation

# Next Steps



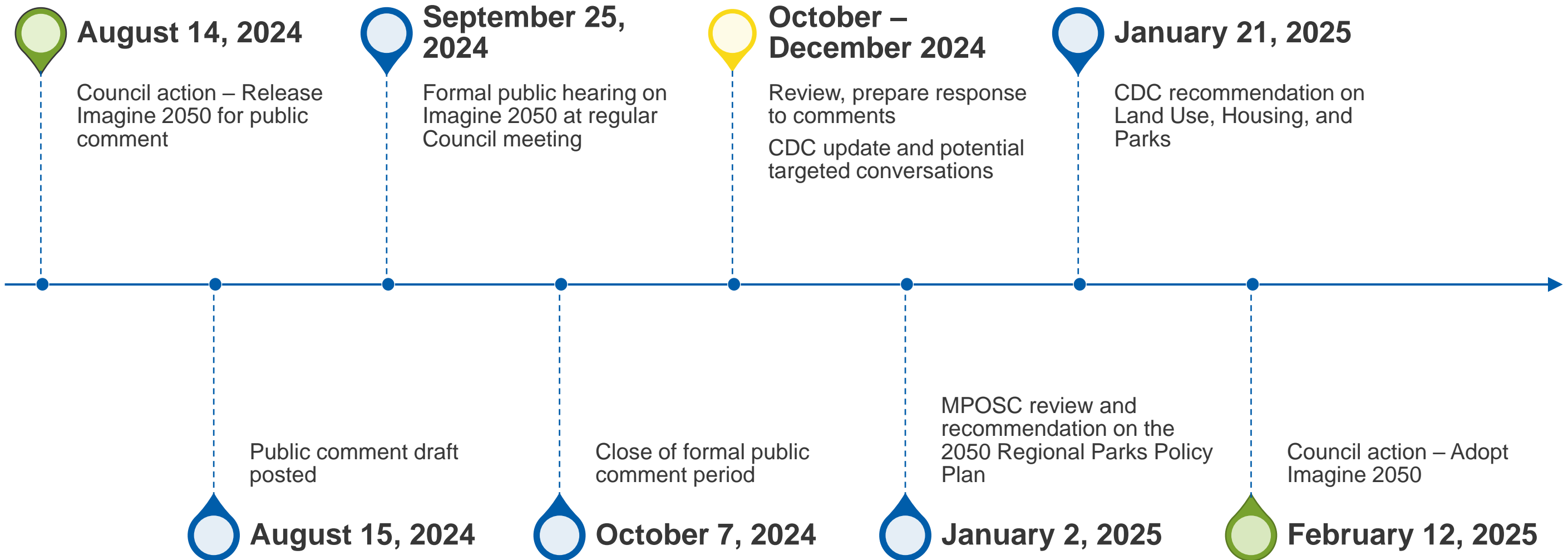
# Engagement continues



## During public comment period:

- Art + Policy engagement
- Presentations and outreach with cities, stakeholders, and leaders across the region
- Continued resident engagement
- Integrating American Indian Advisory Council recommendations
- Formal public comment

# Timeline



# Proposed Action



That the Metropolitan Council release Imagine 2050, including land use policy, the 2050 Regional Parks Policy Plan, and the 2050 Housing Policy Plan for public comment.



**LisaBeth Barajas**

Executive Director, Community Development

**Angela Torres**

Senior Manager, Local Planning Assistance

**Sarah Berke**

Senior Manager, Housing and Livable Communities

**Emmett Mullin**

Senior Manager, Regional Parks

**Find out more at  
[metro council.org/ imagine2050](https://metro council.org/ imagine2050)**

