

Livable Communities Act Programs

Alignment with Imagine 2050 & Program Update



April 21, 2025

Livable Communities Act Overview

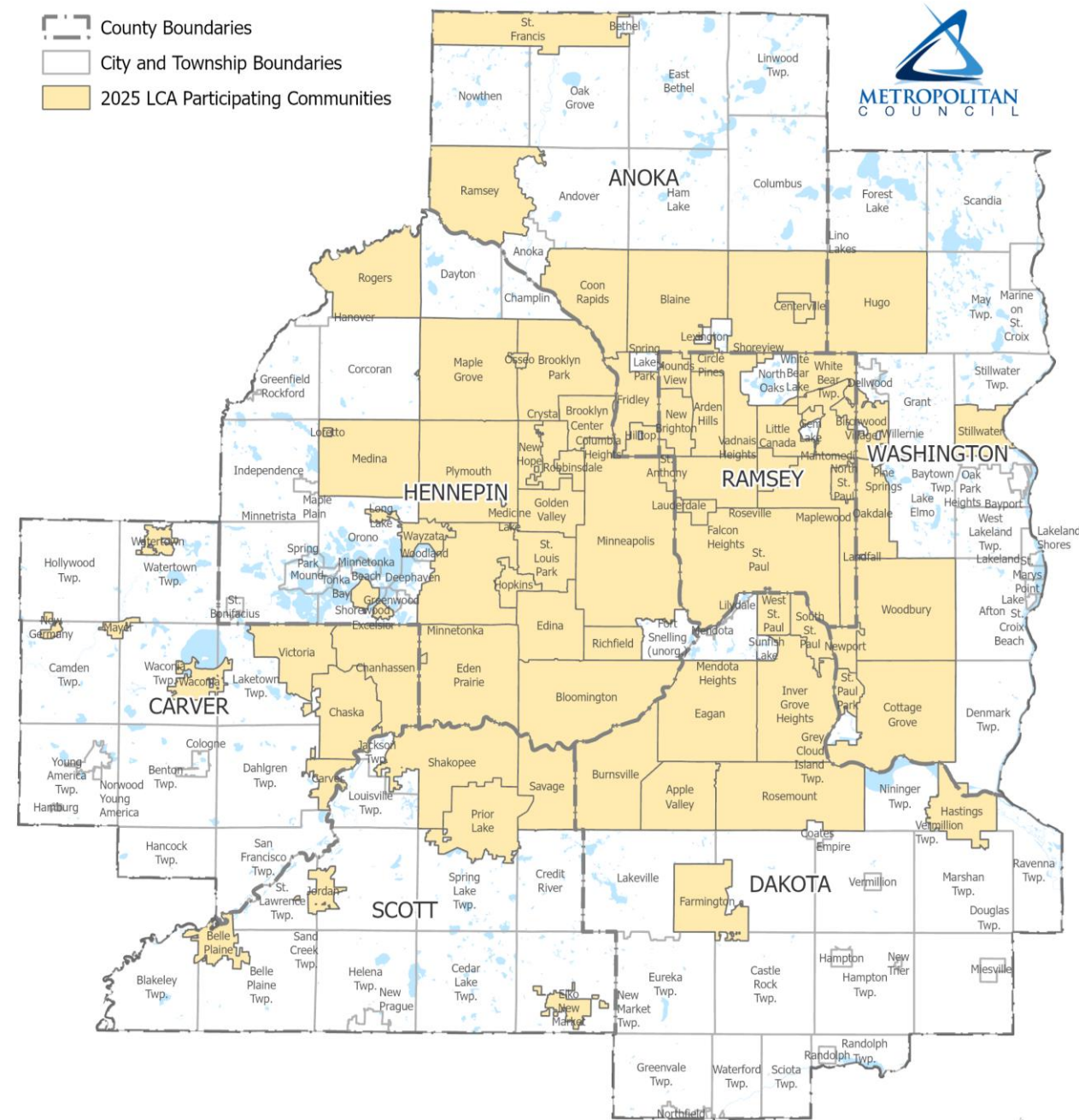
Celebrating 30 Years!

What we do

- Competitive grants given to cities, counties, development authorities, or port authorities
- Incentivizes and support cities implement regional policy goals
- Cities must adopt affordable housing goals to participate

Program goals

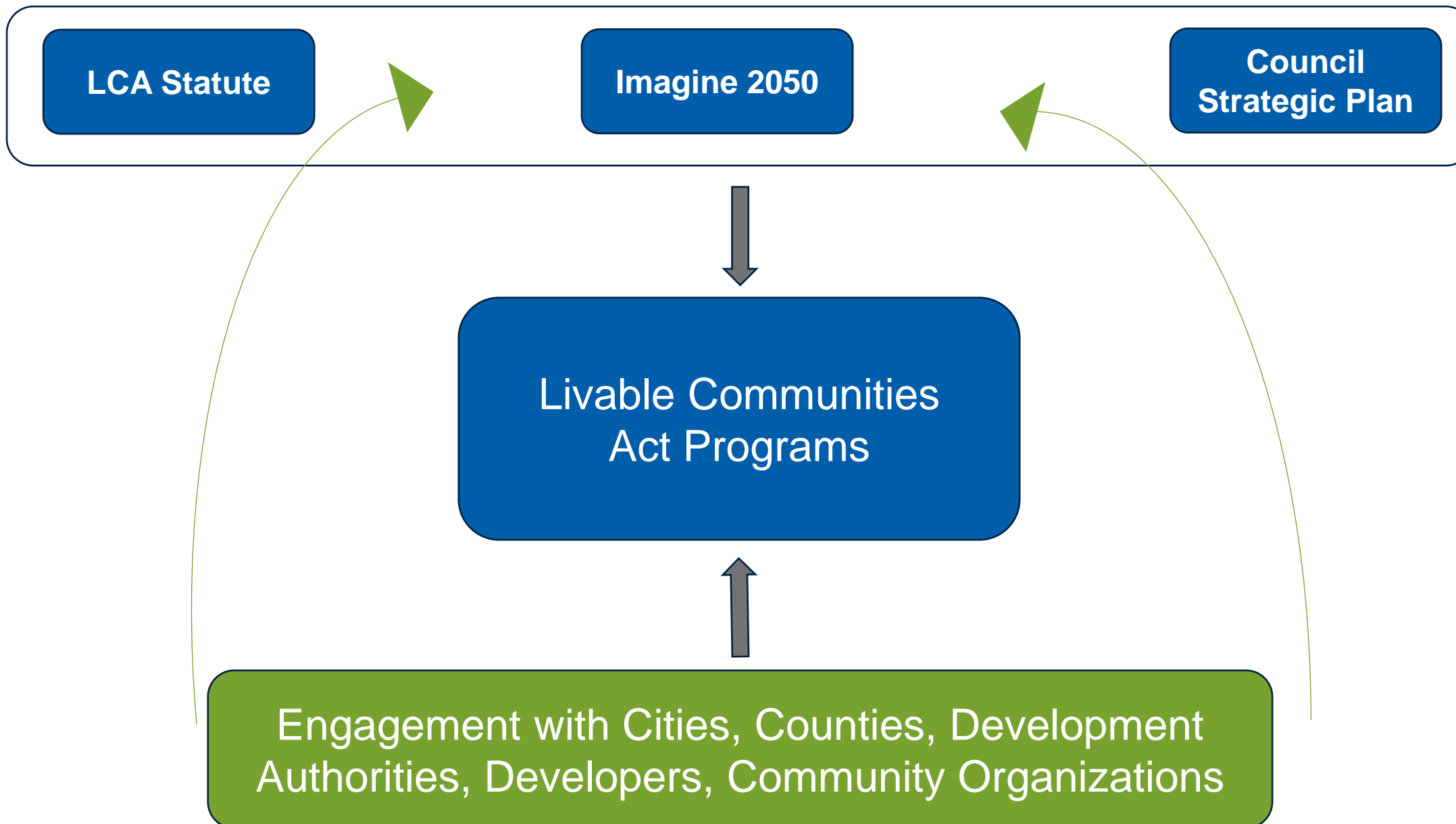
- Housing choice and affordability
- Living wage jobs and economic opportunity
- Connect housing, jobs, and amenities
- Equitable development outcomes



Multi-Year Process



How Do We Design LCA Programs?



Formal documents define suite of goals and priorities; set by legislators and Council

Staff designs and recommends grants programs, including funding levels and scoring criteria, that are approved by Council

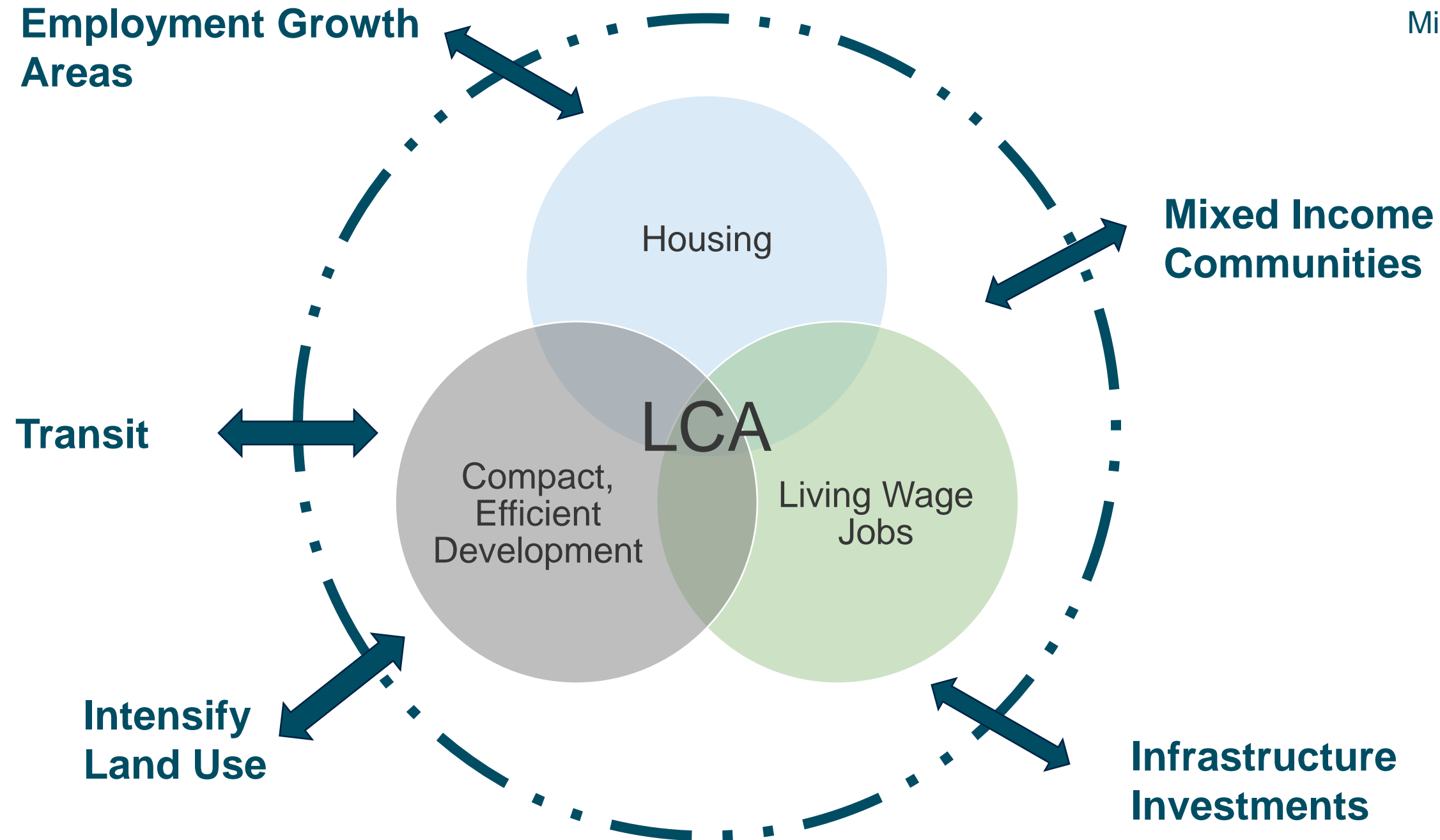
Community vision

**The Livable
Communities
Act Program
funds local
action and
projects make
communities
more livable* in
alignment with
regional goals**

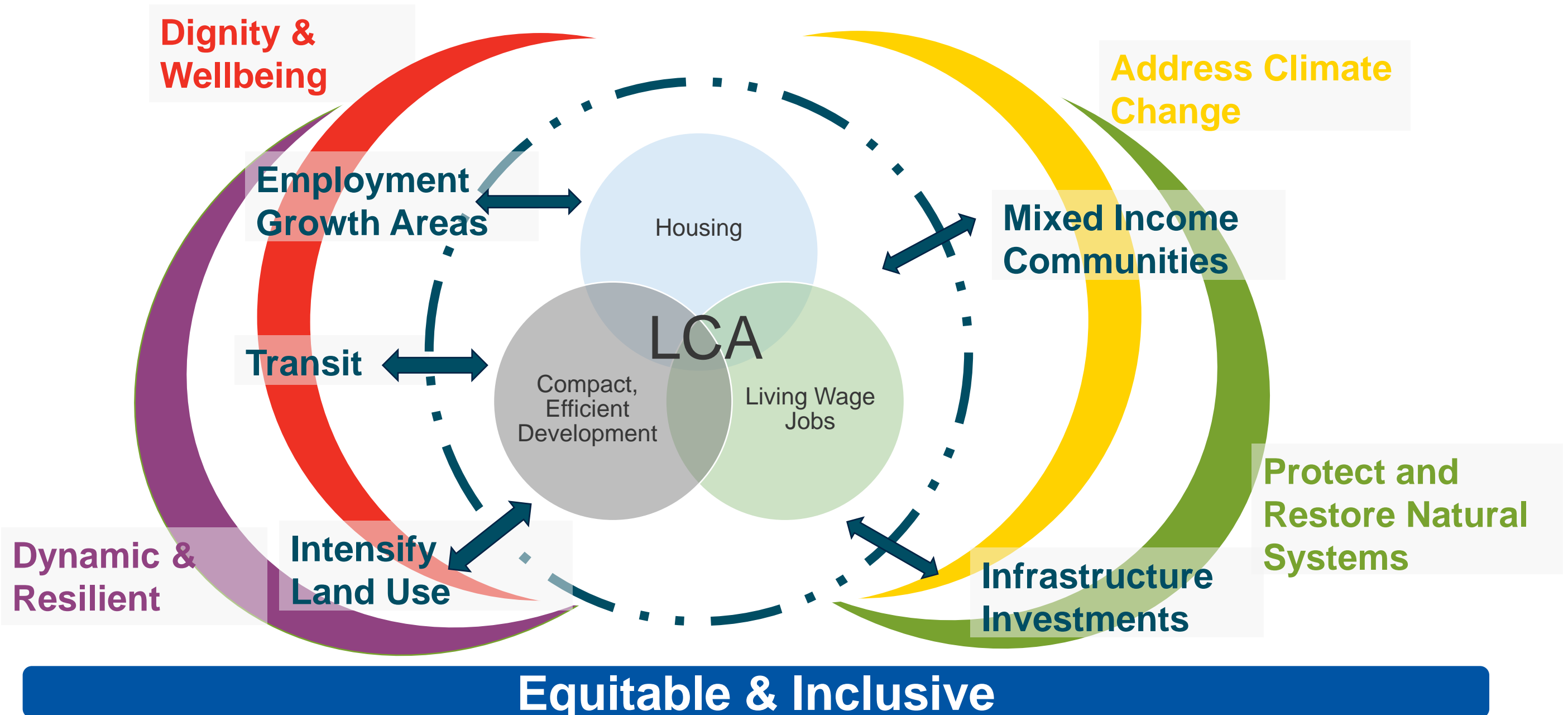


Statute Definition of a Livable Community

Minn Stat 473.25



Layer with Imagine 2050



External Input



April: Refining Elements of a Livable Community

What We're Doing

Working in partnership with city staff, county staff, and developers to understand how LCA can best fill existing gaps.

This was a desire that came out of the first CDC workshop with Council Members in 2023.

How We're Doing It

4 engagement sessions with mix of city staff, county staff, and developers.

Representatives from all 16 Council districts were invited.

Focused conversations on visions for a livable community and how LCA can support realizing those visions.

Refining the Elements for LCA

Set
conditions

Choice in housing and
transportation

Physical, mental, and
cultural safety

Ability to meet daily needs
in community

Tailored
solutions to
meet local
needs

Racial Equity and Justice

Recommending a Program Design

Internal processes

- We are dedicated to creating systems, policies, and programs that repair and heal past harm, foster an equitable future, and eliminate disparities (Imagine 2050)
- We will be transparent and flexible so that we can change course when needed (Imagine 2050)

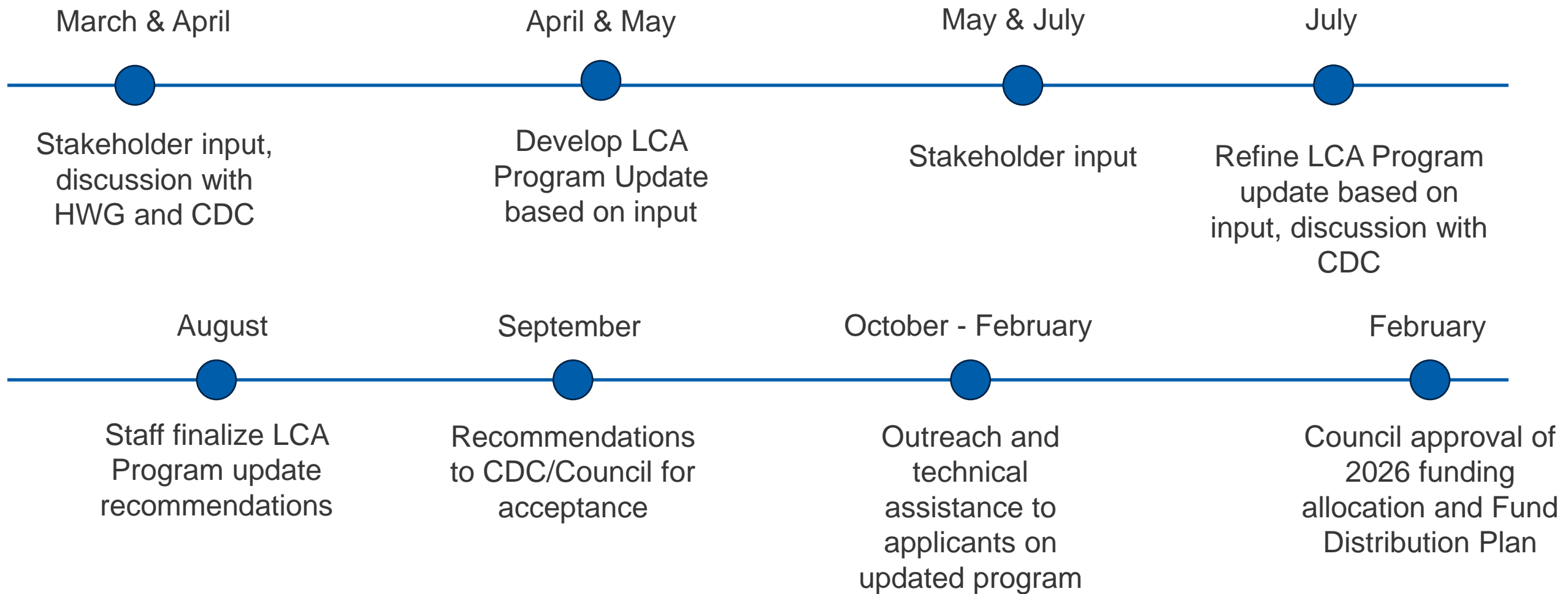
What we fund

- We intend to continue to fund activities along the development continuum (Community Feedback)
- We will fund affordable housing every year (Minn Stat 473.25)
- We will fund environmental cleanup activities every year (Minn Stat 473.25)
- Activities identified in Imagine 2050

How we fund

- In alignment with other Council grant programs
- Simpler for grantees to access (Fall 2024 Consultant Report)
- Data driven with focus on continuous improvement (2023 Council Direction)
- Responsive to potential applicant needs (2023 Council Direction)

Project Timeline



Discussion

- **Elements of a Livable Community for the LCA Programs:**
 - Does this align with your community's needs?
 - What's missing?
 - What could be more narrowly defined?
- **Program Design:**
 - Are the broad goals and guardrails in alignment with your goals for the program?
 - What's missing?

Questions?

Hannah Gary

Planning Analyst, Livable Communities

Hannah.Gary@metc.state.mn.us

Emily Seddon

Senior Planner, Livable Communities

Emily.Seddon@metc.state.mn.us

