



Accept the Public Comment Reports and Adopt Imagine 2050

Regional Vision, Values, Goals; Land Use; Housing; and Parks

January 21, 2025

Today's Conversation



Engagement Approach

Focus for 2050 & Key Changes

- Regional Vision, Values, Goals
- Land Use
- Housing
- Parks

Proposed Action

Engagement Approach

Building on Studies and What We Have Already Heard

- Regional Parks Visitor Study
- 2040 local comprehensive plans
- 2040 comprehensive plan debrief
- Art Shanty – love letters
- Sector Representative program
- Everyday feedback and engagement everyday with residents, partners
- Regular monitoring and reporting:
 - Development trends
 - Land use inventory
 - U.S. Census and annual population estimates
 - Affordable housing production
 - Annual parks use estimates
 - And more

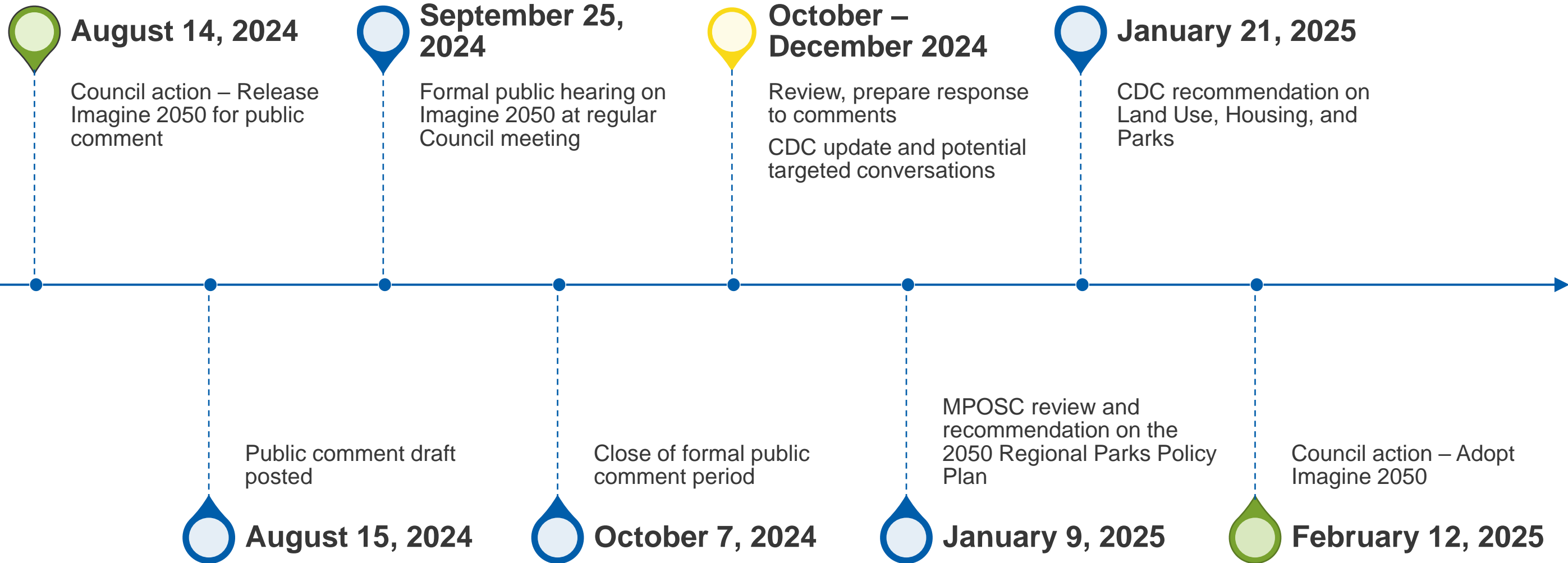
Community centered: Focus on resident voices, particularly underrepresented and historically marginalized groups

- Formal, extended series groups:
 - American Indian Advisory Council
 - Young Leaders Collaborative
 - Community Leaders Collaborative
- Additional venues:
 - Focus group conversations
 - Workshops
 - Surveys

Working and Technical Groups: representatives from local governments, organizations, and other stakeholder groups

- Regional Planning Advisory Group
- Housing Policy Technical Advisory Group
- Community Designations Focus Group
- Community Leaders Technical Advisory Group
- Rural and Agricultural Policy Engagement Series
- Regional Climate and Natural Systems Work Group
- Regional Climate and Natural Systems Technical Advisory Team
- Regional Park Implementing Agency – monthly partner meetings
- Regional Parks Technical Work Groups

Recent activity



Regional Vision, Values, and Goals



Regional Vision

A prosperous, equitable, and resilient region with abundant opportunities for all to live, work, play, and thrive.



Regional Goals



Our region is equitable and inclusive.

Racial inequities and injustices experienced by historically marginalized communities have been eliminated; and all people feel welcome, included, and empowered.

Our communities are healthy and safe.

All our region's residents live healthy and rewarding lives with a sense of dignity, and wellbeing.

Our region is dynamic and resilient.

Our region meets the opportunities and challenges faced by our communities and the economy including issues of choice, access, and affordability.

We lead on addressing climate change.

We have mitigated greenhouse gas emissions and have adapted to ensure that our communities and systems are resilient to climate impacts.

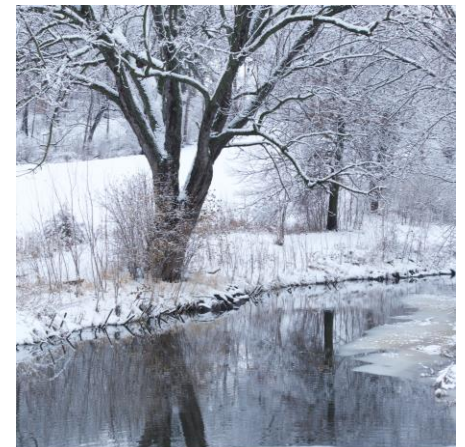
We protect and restore natural systems.

We protect, integrate, and restore natural systems to protect habitat and ensure a high quality of life for the people of our region.

Key Changes in Response to Public Comments

Summary of Revisions

- Land, Water, and People Acknowledgement, summary of commitments
- Introductory language on the successes and great things about the Twin Cities Region
- Widespread impacts of COVID-19 across all populations
- Planning for the aging population and for people living with disabilities
- Updated language around civil unrest and disparities
- More clearly connect inequities of the past to present-day practices
- Add an example of the application of the Community-Centered Engagement Framework
- Streamline the current emissions reporting section
- Update language depending on the allocation of Transportation emissions from MnDOT
- Add language regarding state shoreland rules and other existing water protective state-level rules that we may have missed



Updates to Local Forecasts



30 comments about local forecasts; 25 from local governments

- Comment of agreement or support: 2 cities
- No specific forecast request in public comment; no adjustment needed: 4 cities
 - Also questions and comments from 5 metro residents
- Comment included a forecast request; Council staff disagree; only minimal adjustment to these: 4 cities and 2 county governments
- Comment included a forecast request; adjustment included in table update: 13 cities
- Discussions *outside of comment period*; minor adjustments included in table update: 7 cities

Land Use Policy



Focus for 2050



A people-centered approach

Elevate the voices of underrepresented communities; value their feedback in equal measure; and consider the individual experience within the built form.

- Land use is more than orderly and economical development:
“must recognize and encompass physical, social, or economic needs of the metropolitan area...” Minn Stat. § 473.145

Work from the perspective of what it will take to achieve the regional goals while addressing key land use and regional growth issues.

- Manage growth responsibly and respectfully
- Align need with opportunity
- Build community connections
- Natural systems
- Climate resilience
- Equitable development
- Economic wellbeing

Land Use Policy

Key research

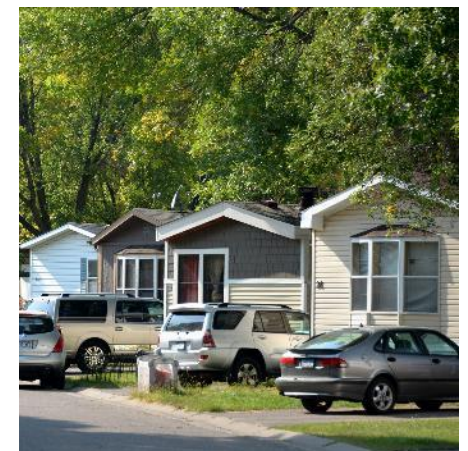
- 2020 land use inventory
- Scenarios Planning analysis
- Community designations analysis
- Regional forecasts
- Land use and development trends
- Density and transit station area analysis

Key messages

- Efficient land use practices reduce the cost of infrastructure investments and service expansion
- Compact development happens in all community types

Broad changes

- Integrate American Indian perspectives in land management guidance
- Re-introduce previous land planning tools
- Residential and station area density policies
- Stronger rural and ag area protections; protect natural systems as part of development
- Integrate universal design concepts
- Allow for a diversity of housing types in all residential use categories
- Build capacity for communities to engage in government planning processes
- Reduce GHG emissions and adapt to climate change via land use & development practices; respond to new statutory requirements
- Support actions towards a more just economy



Key Changes in Response to Public Comments



Content

Updated **Community Designations** and accompanying maps, changing designations for 16 communities.

Added content to further clarify **Orderly Annexation Area** policies.

Added content to clarify commitment to a balanced and flexible approach to **administrative guidelines**.

Added provisions for the Mississippi River Critical Corridor Area (MRCCA) to **carry forward from Thrive**.

Added section on **Roles and Responsibilities** to clarify how roles and responsibilities are identified in the policy chapter and how requirements are differentiated from considerations.

Added section on **Implementation** to help clarify next steps like system statements as well as how the planning process will be supported by the Met Council through technical assistance and funding resources.

Key Changes in Response to Public Comments



Context and Clarity

Clarified language and policy intent, roles and responsibilities throughout, reduced duplication and ambiguity, simplified where possible, or in some cases provided examples.

Added context to descriptions for Urban and Rural Service Areas, each Community Designation, and Objective narratives where needed.

Clarified planning concepts or terms like human-scale, living streets, complete streets, universal design, and crime prevention through environmental design.

Clarified statutory expectations for historical and cultural preservation, aggregate resources, and climate policies.

Clarified local leadership in setting renewable energy strategies.

Strengthened **environmental justice** connection and consolidated mitigation measures for displacement within the equity objective.

Housing Policy



Focus for 2050



The right to housing is a foundation for health, social and economic well-being. This plan guides the region to create safe, dignified and affordable homes that give all residents a choice of where to live.

Key Elements of Housing Policy Plan

- **Clear roles & responsibility:** Provide, plan, partner
- **More focused** Future Affordable Housing Need allocation (60% / 50% / 30% AMI)
- **Support local planning** for addressing needs: Current gaps, Shelter, Aging, Affordable Homeownership, Preservation
- **Land Guided for Affordable Housing** better tied to demonstrated success in building needed homes
- **Cities identify Top Three housing needs** and commit to tools to address them
- **Expanded technical assistance & research, partnerships** across the region



Key Changes in Response to Public Comments



Content:

Included **American Indian Advisory Council** commitments

Refocused actions away from requirements, and toward **technical assistance and tools** for:

- Homelessness, shelter, services, and social/economic needs
- Affordable homeownership, homes for older people, moderately-priced homes, and “naturally occurring” affordable housing preservation

Expanded consideration of relevant topics:

- **Manufactured housing, NOAH preservation**
- **Water efficiency** and energy efficiency

+ Incorporating updated local forecasts for sewer service in calculation of Allocation of Future Affordable Housing Need

Key Changes in Response to Public Comments



Context and clarity:

Increased **detail on housing choices** needed: diverse rental and ownership housing sizes, types, and forms

Increased detail on **funding constraints** that make it difficult to develop deeply-affordable housing

Clarification and context to explain policies and actions:

- **Supportive housing**
- **Homelessness**
- **Disparities** and social determinants of health
- **Housing quality & age**

Clarified plan requirements and reporting requirements

Regional Parks and Trails Policy



Regional Parks and Trails Policy Plan



Key Directions for 2050

Overview

- New strategic framing with Parks and Trails System Vision, Mission, Values, and Objectives.
- \$1.25 billion: Total State and regional funding investments, 1974-2024.

System Plan

- New policy and three actions focused on maintaining data, maps, plans and more in support of the System.
- Modified Special Recreation Features to Special Features and added new Cultural Landscapes sub-classification.
- \$3 billion: 2024 Cost to Complete the System.

Natural Systems

- New policy and actions emphasizes importance of natural systems with Parks and Trails System.
- Added narrative around system addition process; key factors of natural systems foundation, geographic distribution, and equity.

Regional Parks and Trails Policy Plan

Key Directions for 2050

Climate Resilience

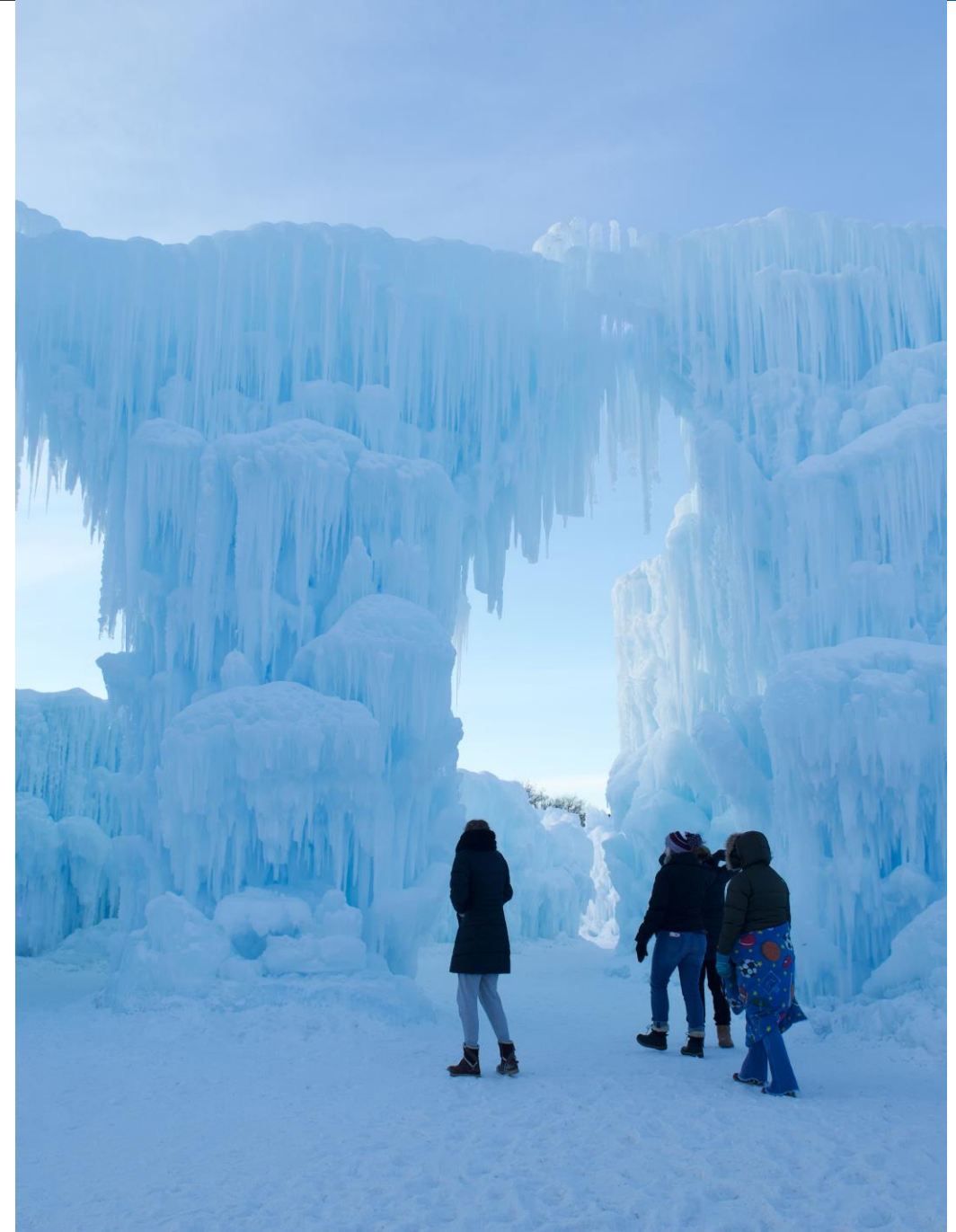
- Emphasized Council's commitment and role supporting climate research, agency coordination, public awareness and education.

Planning

- Streamlined planning requirements into 3 groupings: Engagement, Development Concept, and Natural Systems.
- Clarified long-range plan amendment types.

System Protection

- Streamlined and clarified system protection and land conversion language.



Regional Parks and Trails Policy Plan



Key Directions for 2050

Recreation, Facilities, and Programming

- Integrated and strengthened equity throughout actions.
- Established more flexible criteria for recreation activities and facilities eligibility. Removed static activities list.
- Strengthened Council commitment to better coordinate the Regional Trail System and the Regional Bicycle Transportation Network.

Finance

- Summarized and clarified statutory requirements.
- Formalized commitment to Equity Grant Program.
- Increased Park acquisition opportunity fund cap:
 - Legacy - \$1.7 million to \$2 million
 - ENRTF - \$1.7 million to \$3 million.
- Added action committing Council to actively analyze Council's regional funding strategy to pursue increased funding.

2025-2028 Workplan

- Setting up plan implementation

Key Changes in Response to Public Comments

Plan strengthened by public, agency, Council committee comments

- Enhanced connections between the Policy Plan and Planning Handbook. *(Throughout)*
- Integrated updated graphics that clearly depict trend data, including park visitation and appropriated funding. *(Section 1)*
- Refined and consolidated select long-range plan requirements. *(Section 5)*
- Clarified land conversion criteria to ensure proposed change won't have an adverse effect on park or trail. *(Section 6)*
- Added language supporting agency efforts to reduce barriers to access, moved desired outcome examples to planning handbook, and clarified ineligible recreational activities. *(Section 7)*
- Refined and added items to workplan, including American Indian Advisory Council commitments. *(Section 9)*



Proposed Actions



Proposed Actions



That the Metropolitan Council:

1. Accept the public comment reports for Regional Vision, Values, and Goals; Land Use Policy; the 2050 Regional Parks and Trails Policy Plan; and the 2050 Housing Policy Plan as components of Imagine 2050.
2. Adopt the Regional Vision, Values, and Goals; Land Use Policy; the 2050 Regional Parks and Trails Policy Plan; and the 2050 Housing Policy Plan as components of Imagine 2050.
3. Adopt the local forecasts through 2050 as shown in Appendix A of the Vision, Values, Goals component of Imagine 2050.
4. Authorize staff to finalize the preliminary allocations in Appendix B, Future Affordable Housing Need by Local Jurisdiction, of the 2050 Housing Policy Plan for inclusion in the final document for Council adoption.

Suburban Edge - Options



Public Comment Response Options

Option	Proposed Public Comment Response Framework
Option A: 4 units per acre	As shown in the Public Comment Report: We appreciate your concerns. The Council has noted that density is one of the many tools that are used to implement the five regional goals.
Option B: 3.5 units per acre	The Council understands that some Suburban Edge communities may face challenges in planning for the proposed density of 4 units per acre. The Council also recognizes that we must use all available tools to advance our regional goals. The Council is also committed to providing local support and technical assistance to aid local governments as they undertake their 2050 local planning processes. As such, the Council will revise the minimum density expectation to 3.5 units per acre.
Option C: 3.0 units per acre	The Council understands that some Suburban Edge communities may face challenges in planning for the proposed density of 4 units per acre as the previous minimum density of 3 units per acre had been in place for a couple of planning cycles. As such, the Council will revise the minimum density expectation for Suburban Edge communities to 3 units per acre.



LisaBeth Barajas

Executive Director, Community Development

Angela Torres

Senior Manager, Local Planning Assistance

Sarah Berke

Senior Manager, Housing and Livable Communities

Emmett Mullin

Senior Manager, Regional Parks

**Find out more at
metro council.org/ imagine2050**

