

Meeting #1

# Metro Transit Police Work Group

August 27, 2021



# Agenda

1. Introductory remarks and reviewing work group charge – Chair Chamblis
2. Work group member introductions – All Work Group Members
3. Staff introductions – Lesley Kandaras will start this item
4. Overview of background material – MTPD staff will start this item
5. If time allows – work group discussion, including identifying topics for the next meeting

# Work Group Charge

## 1. Design a series of Committee of the Whole discussions

- Monthly through February 2022
- To provide opportunities for the Council Members to receive information from the MTPD, the results of the Citizens League review and other public input, and from other sources, ask questions, articulate priorities, and provide feedback as the work group develops recommendations

## 2. Develop recommendations for consideration by the full Council

- By February 28, 2022, the Metro Transit Police Review Work Group will report back to the full Metropolitan Council with recommended transit safety and security outcomes and strategies to achieve the outcomes.
- Recommendations must also identify data and other information that Metro Transit will provide the Metropolitan Council as part of regular Metro Transit Police Department (MTPD) updates that will begin in Q1 2022.



# Work Group Charge Continued

In designing the Committee of the Whole sessions and in developing the recommended outcomes and strategies, the work group will:

1. Ensure recommendations address safety and security for riders and employees
2. Acknowledge the history of systemic racism in policing generally and establish recommendations on how the MTPD should address disparities and dismantle inequities through their work
3. Review and identify opportunities to strengthen policies, procedures, and practices
4. Address issues raised by Council Members during the Committee of the Whole meetings and through other channels. Topics identified to date include: use of force, code of conduct enforcement, interaction with youth, MTPD oversight and governance, officer training, and disaggregated data needs
5. Use results of the Citizens League engagement as a key input to guide and inform priorities, outcomes, and strategies
6. Incorporate additional stakeholders, data, policing standards, best practices, and other critical information that need to be considered in addition to the Citizens League engagement results
7. Identify barriers that may need to be addressed to achieve recommended outcomes or carry out recommended strategies
8. Confer with the Equity Advisory Committee and the BIPOC work group as appropriate throughout the process of reviewing MTPD and developing recommendations

# Work Group Member Introductions

1. What are your top 2 or 3 priorities when approaching this police review?
2. What do you want this work group to accomplish? What are your desired outcomes?
3. Are there experiences you've had or work you've done that informs your participation in this work group that you want to share?

# Staff Introductions

- Lesley Kandaras, Metro Transit Chief of Staff, work group staff lead
- Bridget Toskey, Executive Assistant to the RA, work group administrative lead
- Michelle Fure, Manager of Public Involvement, Regional Administration
- Captain Brooke Blakey, Executive Officer, MTPD
- Lt. Salah Ahmed, Watch Commander, MTPD
- Leah Palmer, Policy & Project Development, MTPD
- Celina Martina, Transit Equity Senior Manager, Metro Transit





# Background on the Metro Transit Police Department

Presented to the Metropolitan Council's Police Work Group

Lt. Salah Ahmed, Watch Commander, MTPD  
Leah Palmer, Policy & Project Development, MTPD

August 2021

# FOUNDING & AUTHORITY



- Established in 1993
- Minn. Stat. § 473.407
  - Fully sworn officers
  - Chief is appointed by the Regional Administrator
  - Primary function: provide for the safety & security of transit vehicles and routes
  - MTPD may assist other agencies if requested by those departments
  - Local police department has first right of refusal over investigations



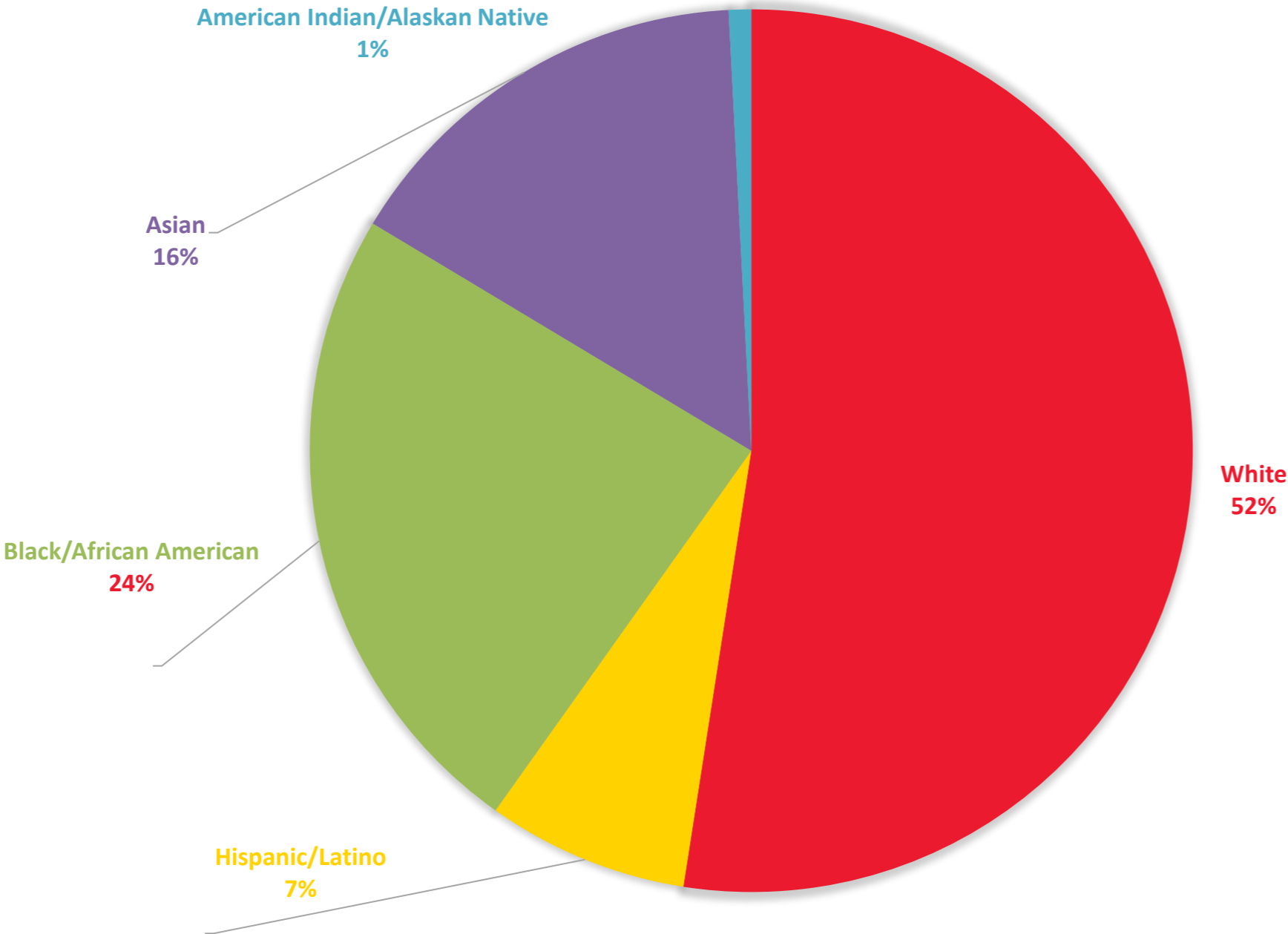
*An old shoulder patch circa 2004*



*Current shoulder patch*



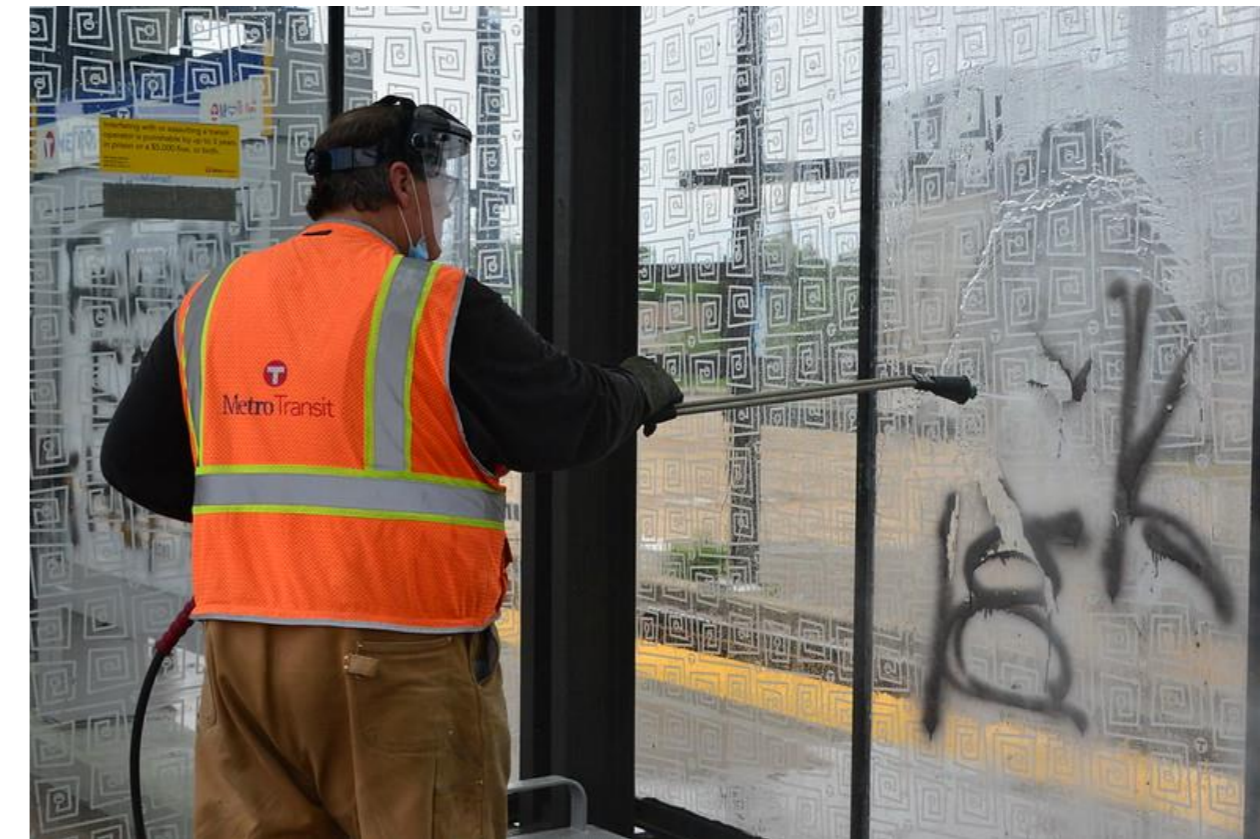
# STAFFING & DIVERSITY



**FULL-TIME SWORN OFFICERS:**  
Total POC: 48%  
Women: 21%

**Staff Breakdown (220 employees)**  
**122 Sworn:**  
1 Chief | 4 Captains | 6 Lieutenants | 22 Sergeants  
88 Officers  
  
**58 Part-time officers**  
**15 CSOs**  
**25 civilian support**

- Calls for Service (CFS):
  - 2020: over 65,000
  - YTD 2021: over 49,000
- 2020 Crime:
  - Major crimes: 12% of all reported crime  
*(homicide, sexual assault, robbery, aggravated assault, burglary, theft, auto theft, human trafficking, arson)*
- **Most CFS center around “livability crimes”**
  - Usually violations of Metro Transit’s Rider Code of Conduct  
*(liquor, smoking, disorderly conduct, vandalism)*



*Metro Transit facilities worker removing graffiti from LRT platform*





## Street Patrol

Answer 9-1-1 calls  
Conduct facility & bus operator checks

## Critical Asset Protection (CAP)

Assigned to light rail system  
Fare Inspection

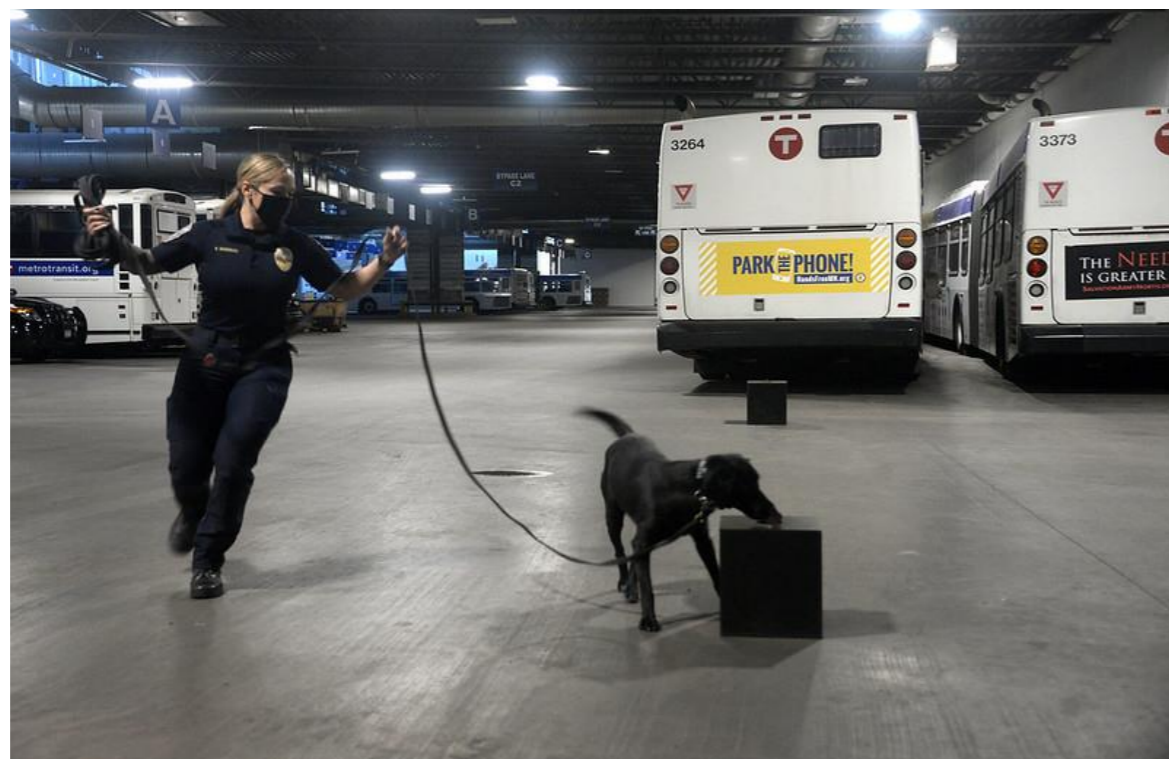


## Transit Response Team (TRU)

Directed patrol  
Uses data-driven policing model

## Mall of America beat

Circulates between MOA and MSP Airport



## Canine Unit

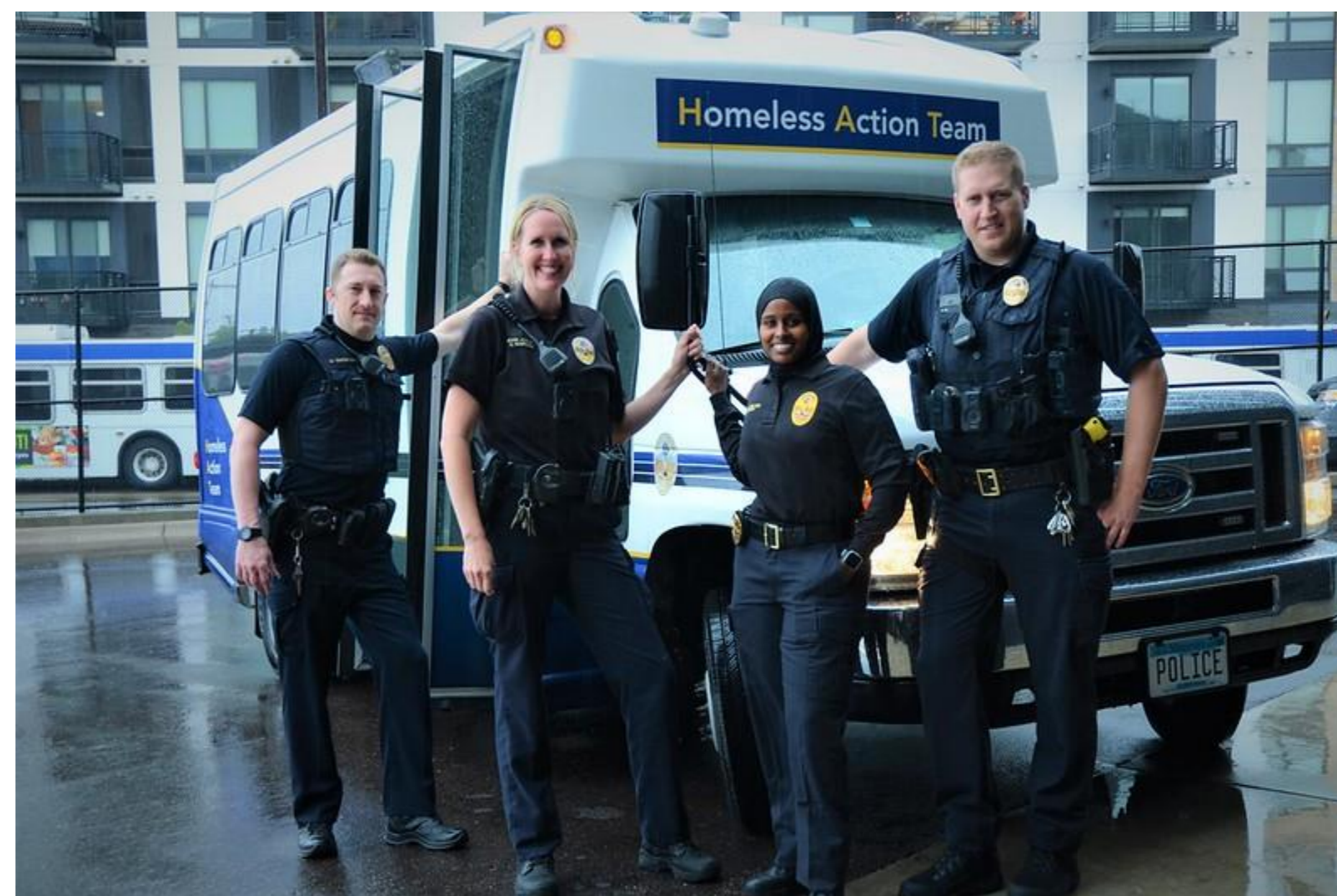
8 explosive-sniffing Labrador dogs



# HOMELESS ACTION TEAM (HAT)

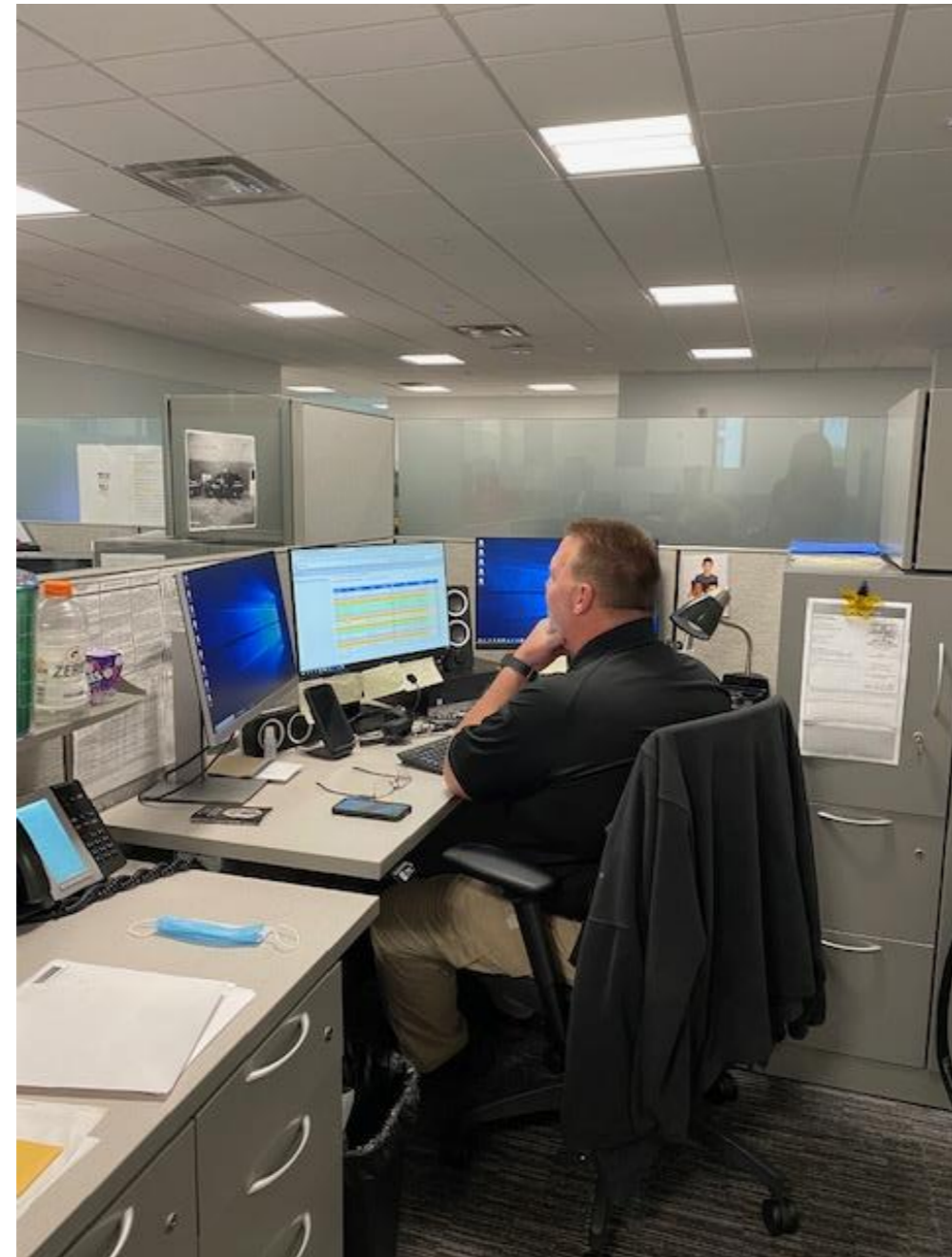


- Street-level outreach
- Partners with Met Council's HRA to obtain housing vouchers
- Teams up with community groups, non-profits, and healthcare
- Culturally sensitive
- **Over 200 people permanently housed since 2019**



*Left to right: Officer Waterkamp, Officer Kompelien, Sgt. Mohamed, Officer Schmit*





*Juvenile Investigator Darryl Loken*

## Headed by Lt. Lori Ammend

- 1 sergeant
- 3 investigators
  - Juveniles
  - Operator Assaults
  - General assignment

## 2020

- 2485 investigations
  - 550 felonies
  - 352 gross misdemeanor
  - 1456 misdemeanor

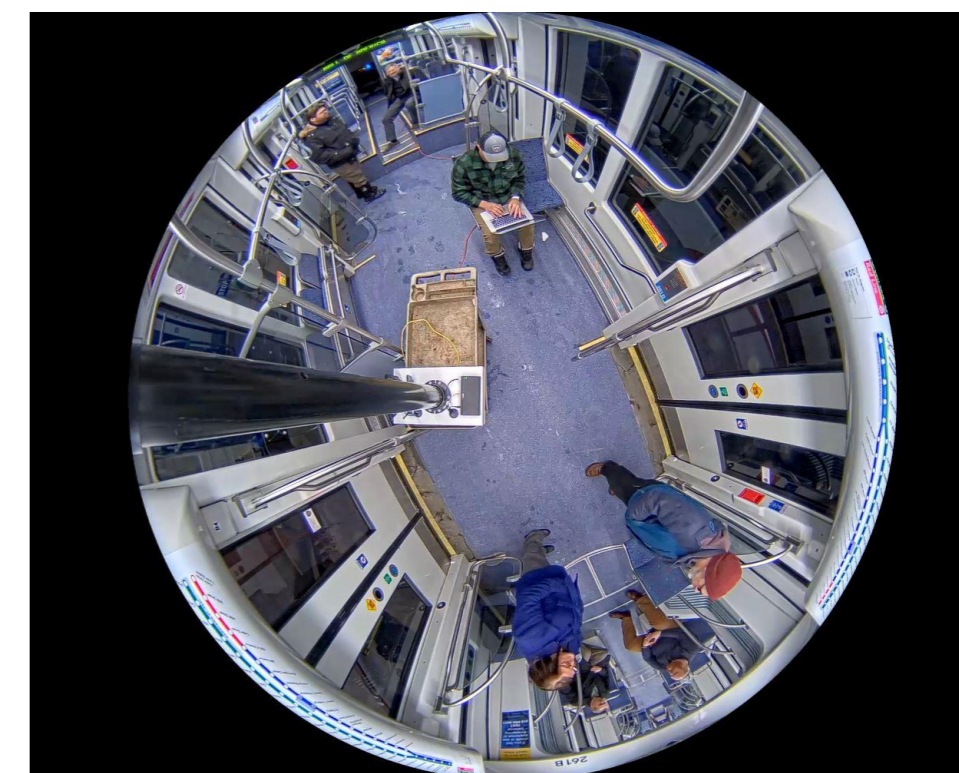






*Theft suspect; this still photo was lifted from high-def LRT camera*

- Pilot began January 2020
- Permanently funded/staffed summer 2021
- 1 sergeant leads team:
  - Four officers
  - Currently hiring six civilians
- Live streaming cameras:
  - 639 on light rail vehicles
  - 586 on LRT platforms
  - 187 bus stops/transit centers
  - 167 NorthStar stops
  - Other critical infrastructure
- Assists Patrol & Investigations Divisions



*"Fish eye" camera can be remotely rotated 360°*



*Sgt. Leubner monitors safety cameras*



- Deployed Sept 2020
- All full-time & part-time officers wear BWCs
- Non-sworn CSOs also wear BWCs
- [Policy 451](#) in MTPD's manual
  - Outlines activation, deactivation standards
  - Data privacy
  - Retention
- To date: 94,000 videos recorded



Policy  
**451**

Metro Transit Police Department  
Metro Transit PD Policy Manual

## Body-Worn Cameras

### 451.1 PURPOSE AND SCOPE

The primary purpose of using body-worn cameras (BWCs) is to capture evidence arising from police encounters with the public. BWCs are a tool that is intended to enhance police-community relations, decrease complaints against officers, and assist in successful prosecution of crimes.

This policy sets forth guidelines governing the use of BWCs, as well as administering the resulting data as prescribed in state law. Compliance with these guidelines is mandatory. The Department recognizes that video cannot always show the entire scene and circumstances. This policy has been developed with the knowledge that some situations are tense, uncertain, and can evolve rapidly.

BWC data are not intended to replace detailed written reports and other forms of evidence.

This policy governs the use of BWCs in the course of official duties. It does not apply to or replace the use of mobile video ("dash cam") recording systems (MTPD Policy 446).



# Questions?

# Work group discussion

*For reference:*

- ***Next work group meeting: Friday, September 10, 2021, 9 a.m. – 10:30 a.m.***
- ***Per work group charge, monthly updates to the Committee of the Whole tentatively scheduled for:***
  - *September 15*
  - *October 20*
  - *November 17*
  - *December 15*





**METROPOLITAN**  
C O U N C I L