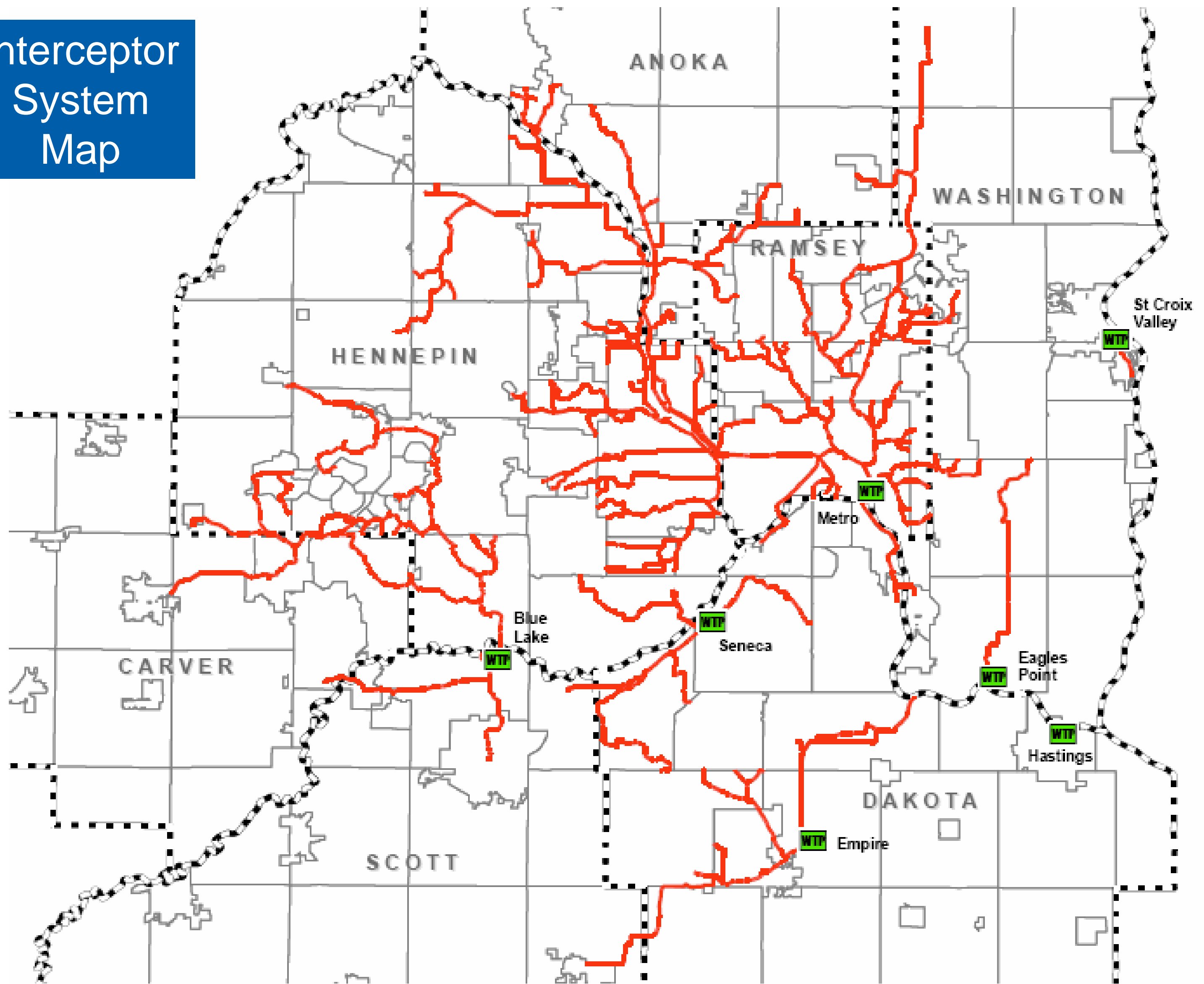


# Info Item 1: Capital Program Update

Environment Committee, April 9, 2013



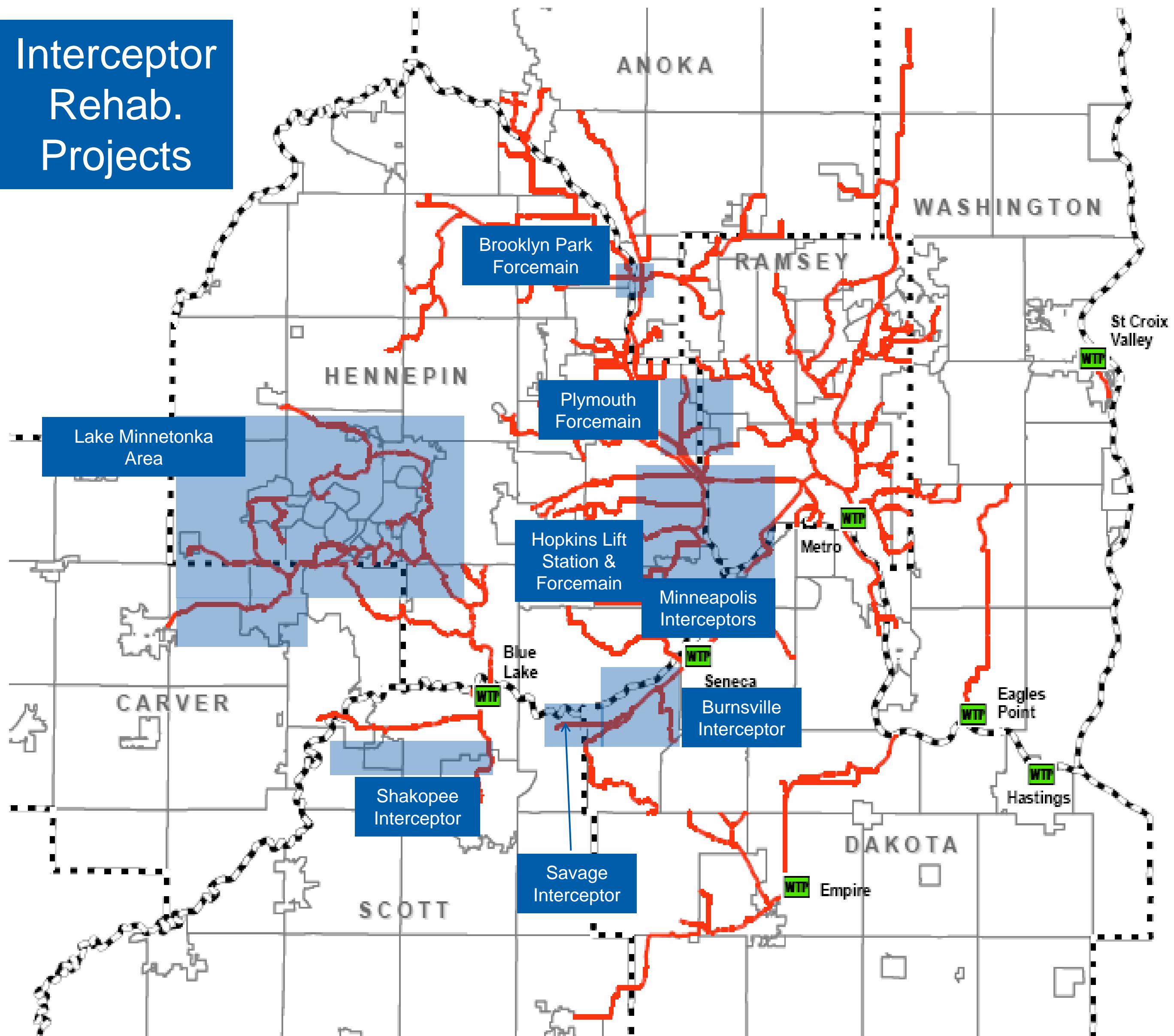
# Interceptor System Map



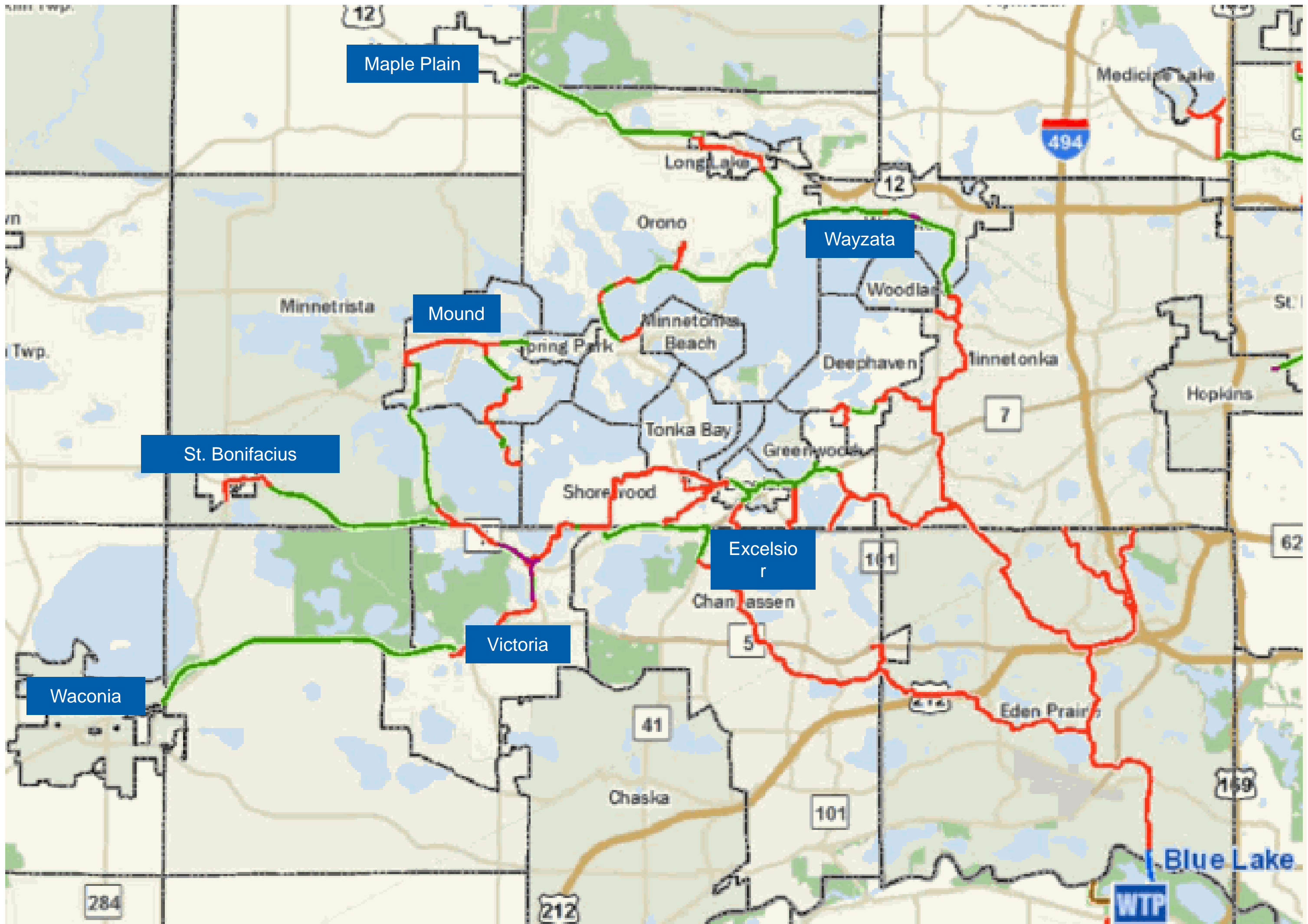
# Interceptor System Components

- 481 miles of gravity sewer
- 194 flow meter stations
- 127 miles of forcemain
- 63 lift stations
- 22 miles of siphon sewer
- 10 combined sewer overflow regulators

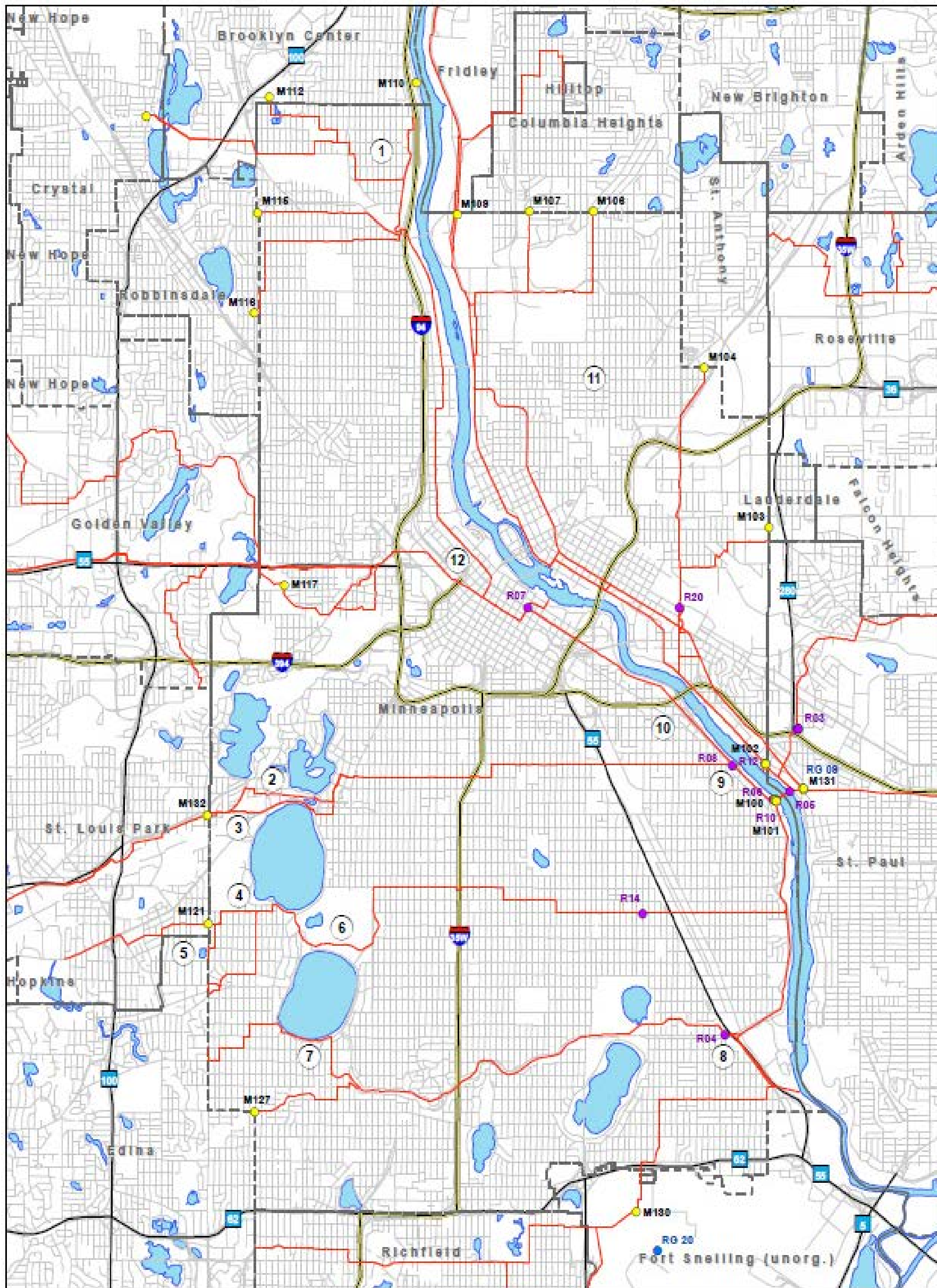
# Interceptor Rehab. Projects



# Lake Minnetonka Area Projects



# Minneapolis Interceptor Projects

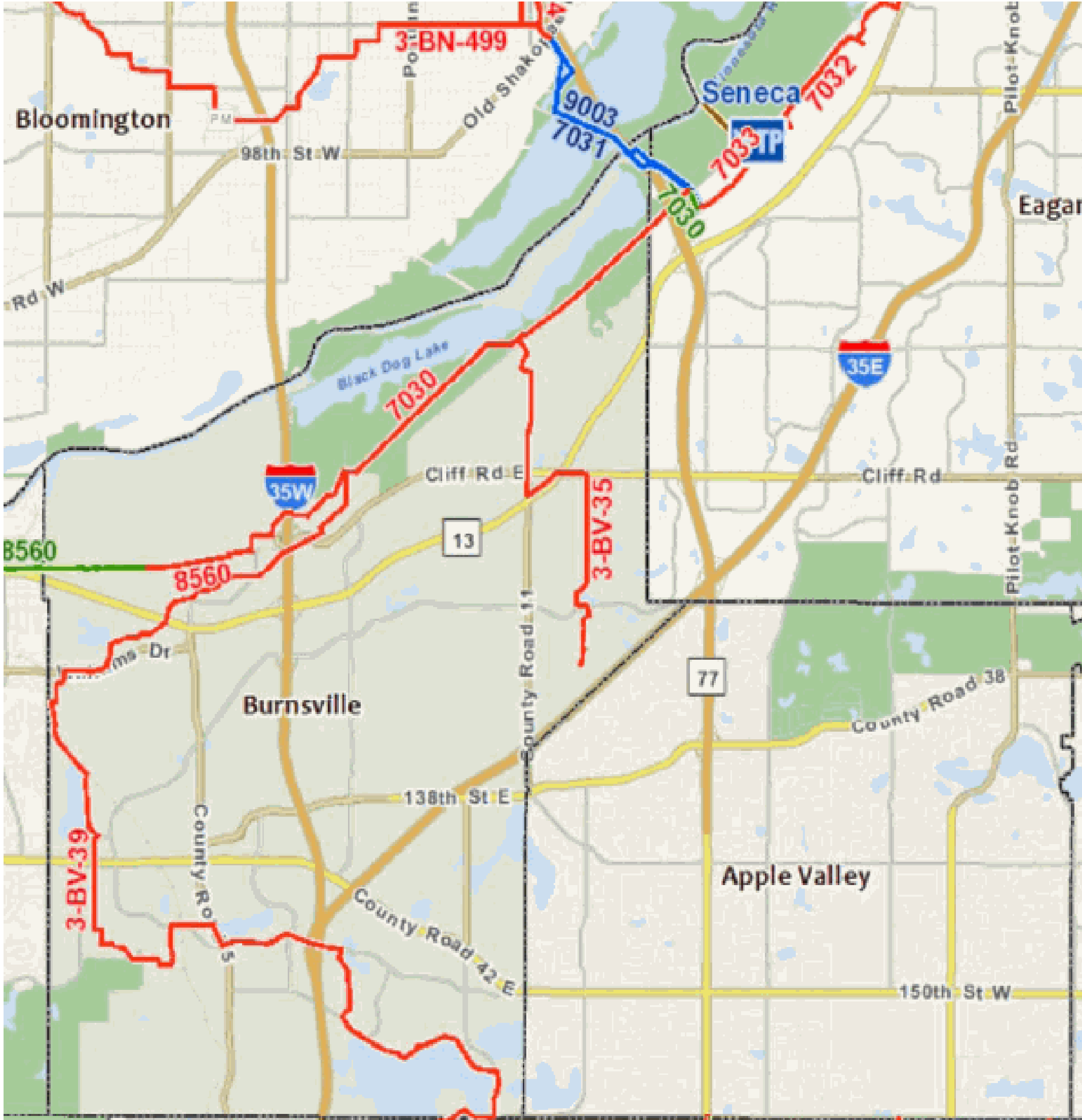




# Brooklyn Park LS/FM Rehabilitation



# Burnsville Interceptor Rehabilitation

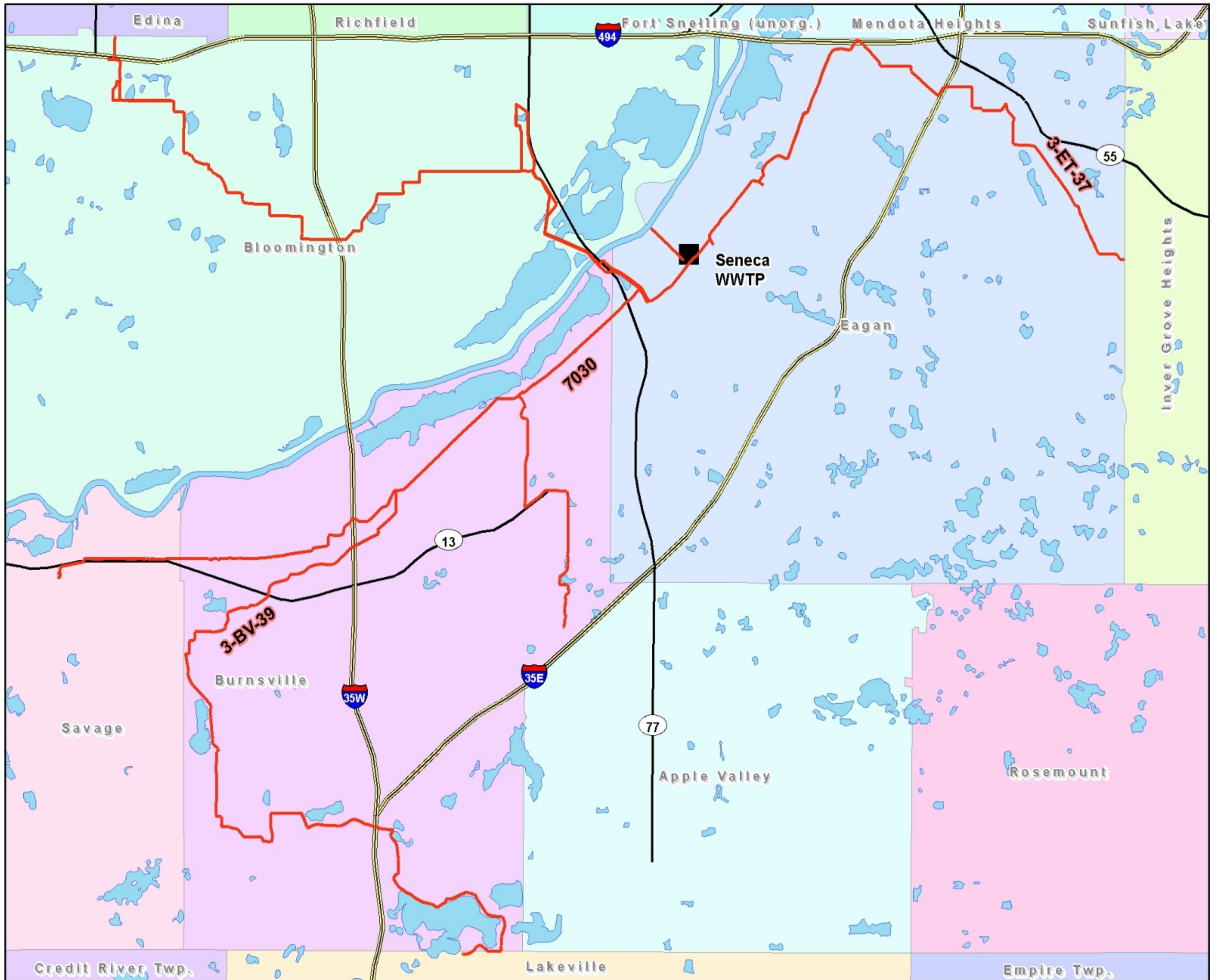




# Condition Assessment

- Accelerating CCTV Inspection
  - Significant Corrosion of Concrete Sewers
  - Additional Capital Project Needs Being Identified
- Deep Sewer Inspection in Minneapolis and St. Paul

# Seneca Interceptor Rehabilitation



# Next Steps

- Define Projects and Priorities
- Estimate Project Costs
- Request an Amendment to 2013 Capital Program to Fund Accelerated Interceptor Rehabilitation Work
- Develop 2014 Capital Program and 2014-2019 Capital Improvement Program