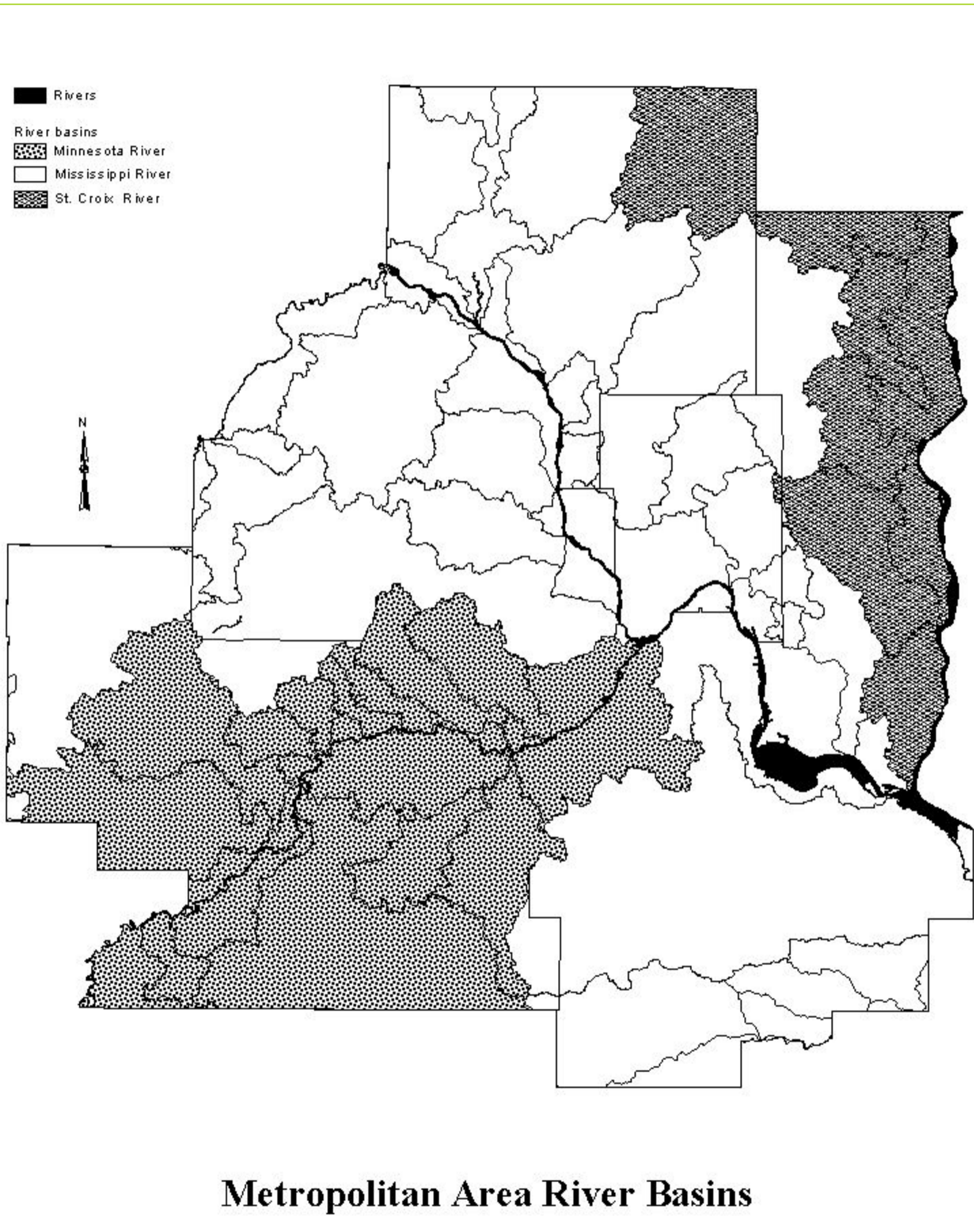


METROPOLITAN COUNCIL Environment Committee

October 22, 2013

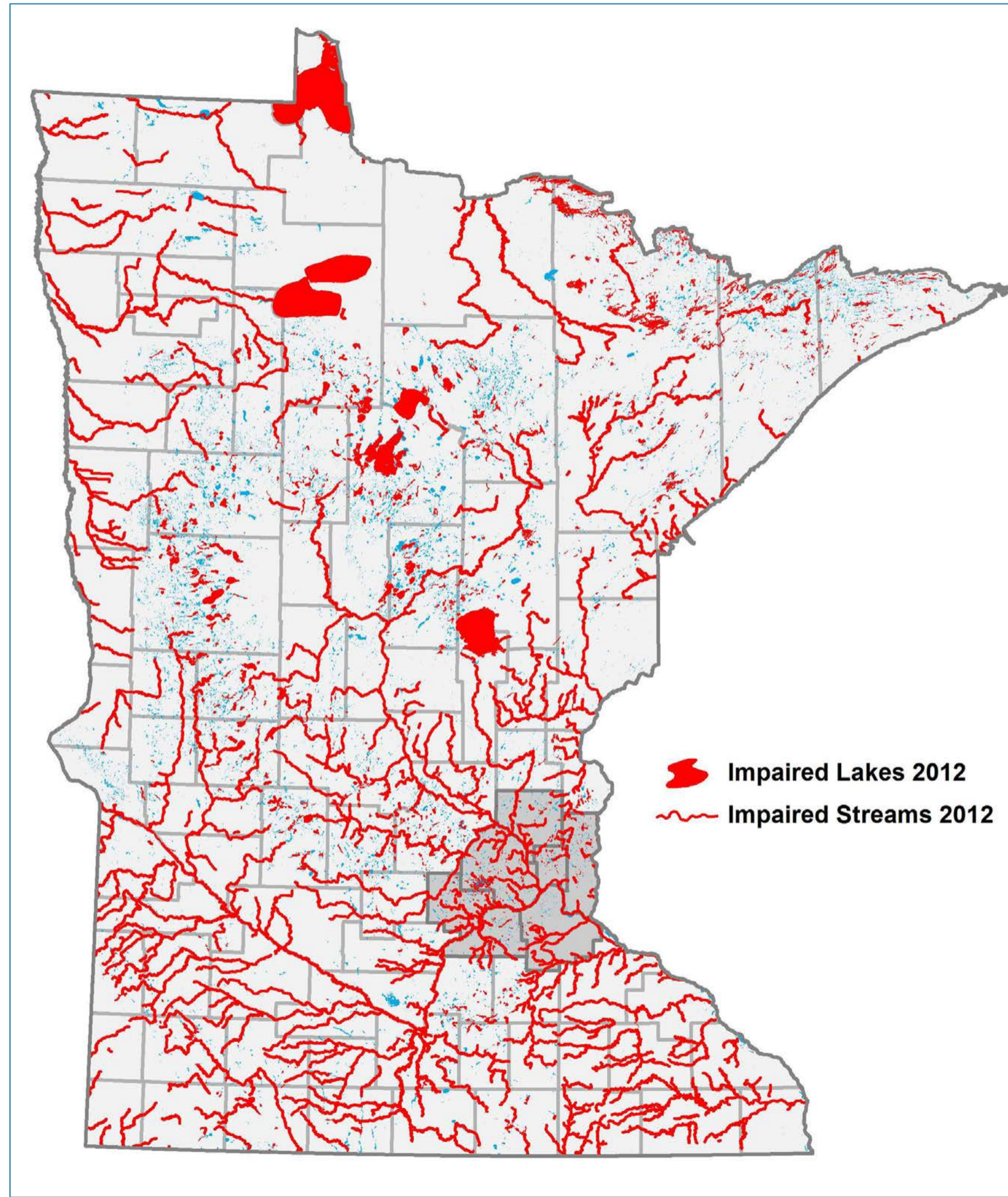
Water Resources Policy Plan Update

Background

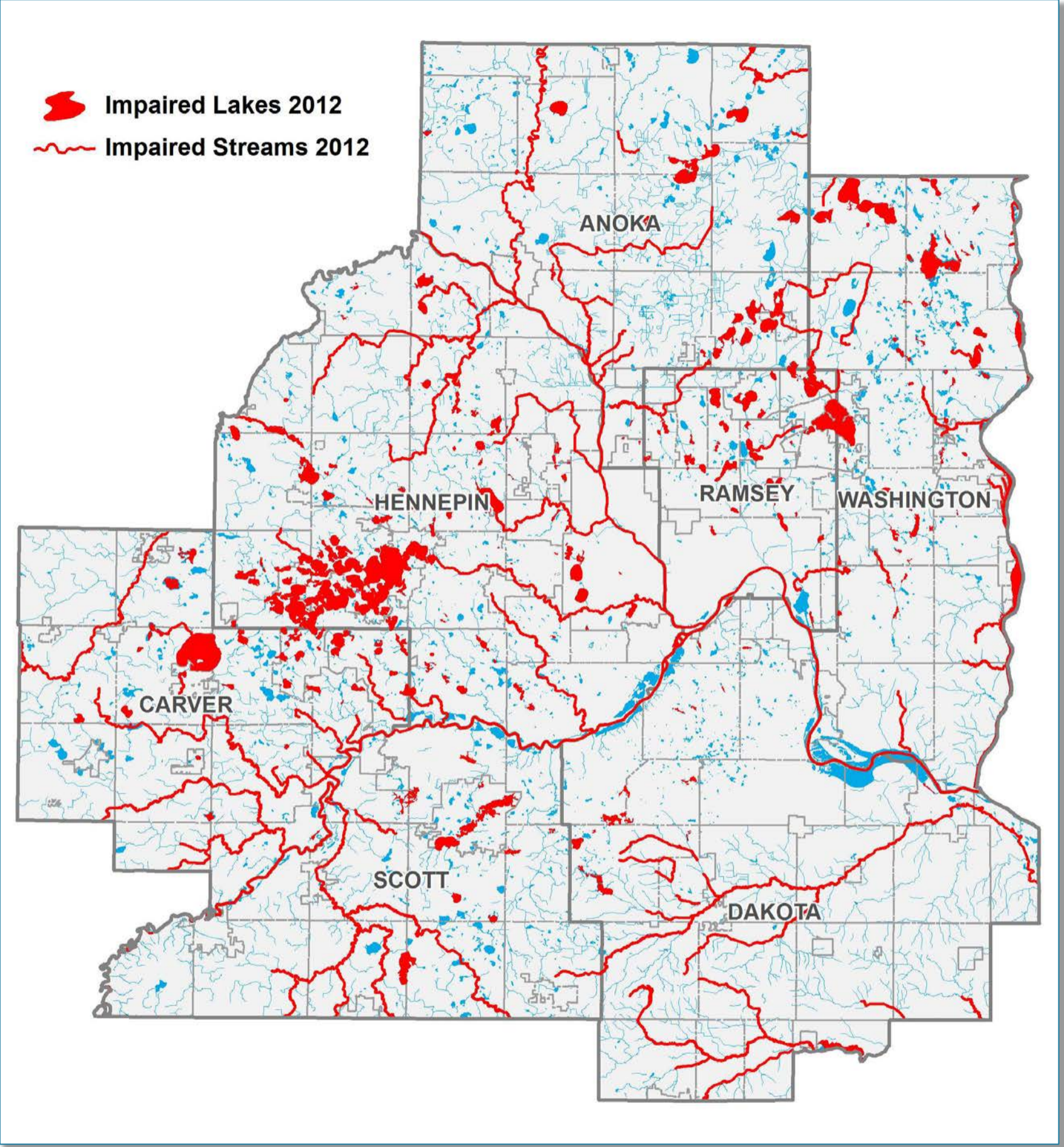


- **Mississippi, Minnesota and St. Croix Rivers**
- **More than 40 tributary sub-basins**
- **Over 950 lakes**
- **Extensive wetlands**
- **Prolific groundwater system**

2012 Impaired Waters



Metro Area Impaired Waters



MCES' Role in Surface Water

- Area-wide water quality planning agency (point and nonpoint responsibilities)
- Offset point source improvements with efforts in nonpoint source reduction
- Monitor, assess and track conditions/changes for resources in the region
- Protect, maintain and improve resources
- Partner with others to make improvements
- Review plans and actions of others to make sure addressing the issues
- Lead by example

Water Quality Issues We Face

- Hundreds of impaired waters in the region
- Water quality issues are dominated by nonpoint sources
- Minnesota River basin big contributor to water quality issues in the region
- Agricultural runoff impacts water quality and quantity
- Erosion from stream banks, bluffs and gullies
- Point sources are main sources that are regulated

Direction from Thrive MSP 2040

Outcomes

- Stewardship
- Prosperity
- Sustainability
- Livability
- Equity

Operating Principles

- Integration
- Collaboration
- Accountability

Next Steps

- Include water sustainability policy in updated WRPP
- Work to sustain resources by strategically integrating water supply, wastewater and surface water functions
- Develop policies and implementation strategies to maintain and improve water quality and quantity in the region
- Work with local governments and watersheds through the plan review process to implement policies, strategies and actions to maintain and improve water quality and quantity

Thrive Sustainability Goal

The region's water resources are sustainable, supported by a regional strategy that balances growth and protection to improve and maintain the quality and quantity of our water in our lakes, rivers, streams, wetlands, and groundwater.



Thrive Sustainability Policy

The Council will work with state, local and regional partners to provide for sustainable water resources through effective water supply, surface water, and wastewater management.



Draft Policy – Water Quality/Quantity Sustainability

The Council and region will work to maintain and improve the quality and availability of the region's water resources to support habitat and ecosystem health while providing for recreational opportunities, all of which are critical elements of our region's quality life.



Draft Policy – Watershed Approach

The Council will work with our partners to develop and implement a regional watershed based approach that addresses both watershed restoration (improving impaired waters) and protection (maintaining water quality in unimpaired waters).



Draft Policy – Cost Effectiveness

The Council will balance costs and benefits in its efforts to protect and restore the region's water resources.



Draft Policy – Promoting Water Sustainability

The Council will provide technical assistance and organizational support as part of our efforts to create sustainable water resources.



Draft Policy – Providing Leadership

The Council will foster collaboration and convene discussion on regional issues related to water resource protection and restoration.



Draft Policy – Assessing and Protecting Regional Water Resources

The Council will continue to collect and assess the essential data needed to evaluate impacts on regional water resources and measure success in achieving regional water goals.



Water Resources Policy Plan Update Process

Upcoming 2013/2014 Environment Committee briefings

- ✓ Proposed water supply policy – December
- ✓ Proposed wastewater system plan – January
- ✓ Review draft plan – early 2014
- ✓ Adopt plan for public hearing – spring 2014
- ✓ Hold public meetings around the region – late spring 2014
- ✓ Hold public hearing – summer 2014
- ✓ Adopt new plan - summer 2014

Questions

Judy Sventek

Judy.Sventek@metc.state.mn.us

651-602-1156