

Business Item 2014-199

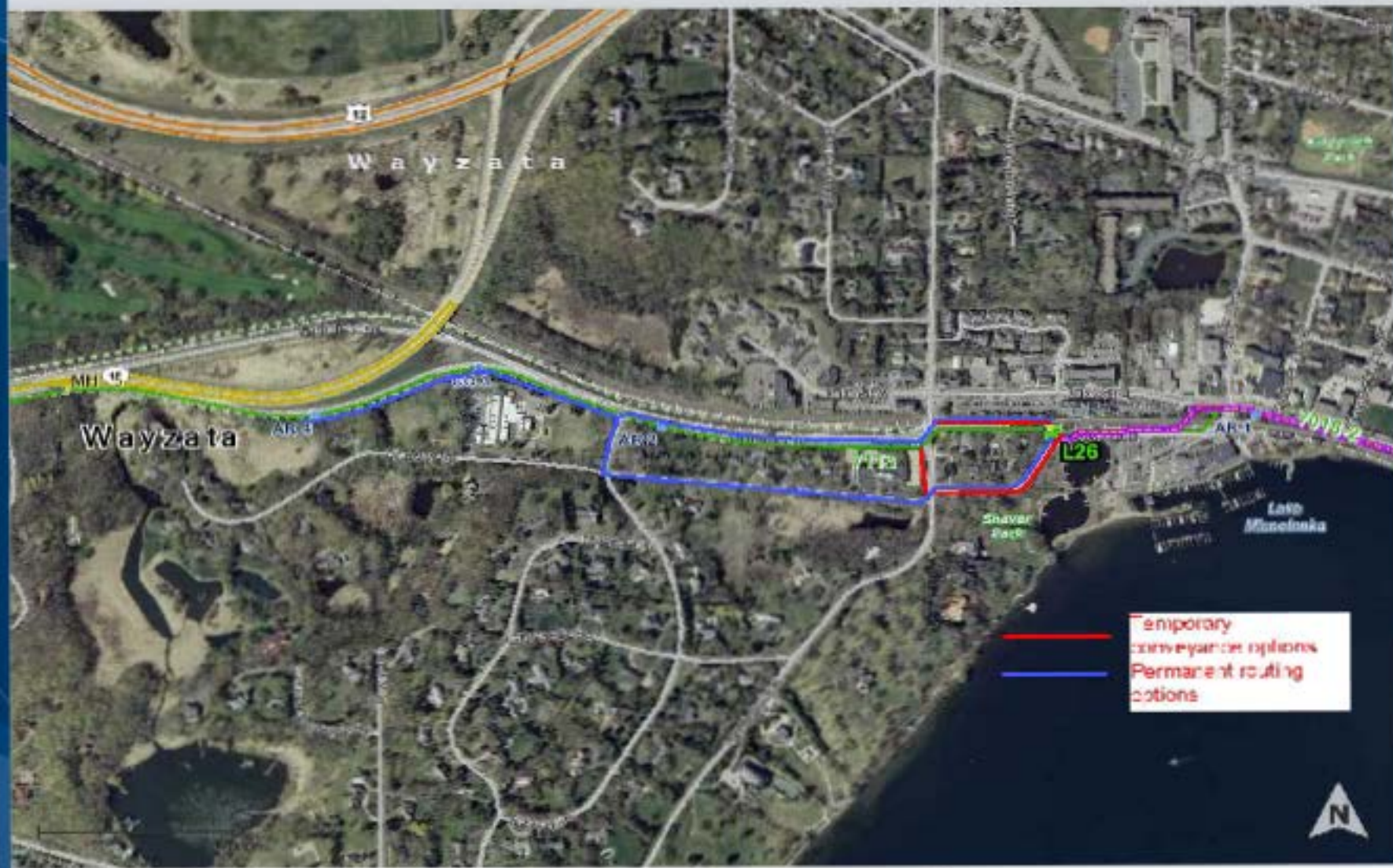
Ratification of Declaration of Emergency for Repair of Interceptor 7113

Scott Dentz, Interceptor Engineering Manager

Environment Committee: August 12, 2014



MCES Map



This map is for geographical representation only, for a general location of MCES Interceptor Facilities. This map should not be used as a reference for exact location engineering purposes.



Testing at excavation (adjacent to MH 1)

Hole drilled in the location of the 0.14" ultrasound test location was actually measured at 0.125"

Additionally, the 20" DIP, CL 52 spool piece pipe at Magney's trailer was measured to verify accuracy of ultrasound. It measured 0.44" and 0.45" where factory is 0.42". Also, the coupon from Phase 2 (SJ Louis) conveyance which was on the DIP portion measured 0.51" in thickness while the ultrasound gave readings ranging from 0.52" to 0.54".

