

Business Item 2015-184

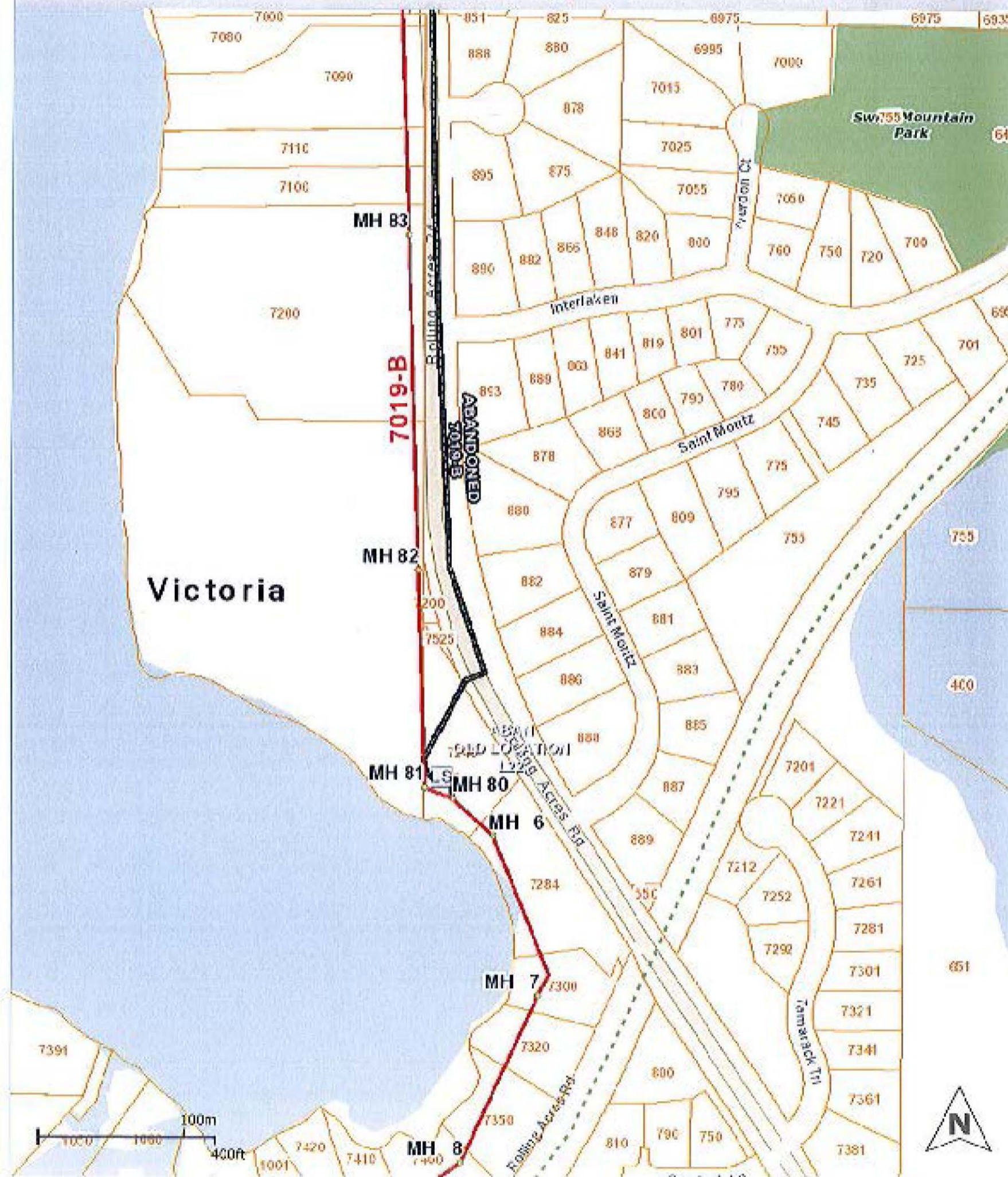
Disposition of Surplus Fee Title Property in the City of Victoria

Scott Dentz, Interceptor Engineering Manager

Environment Committee: August 11, 2015

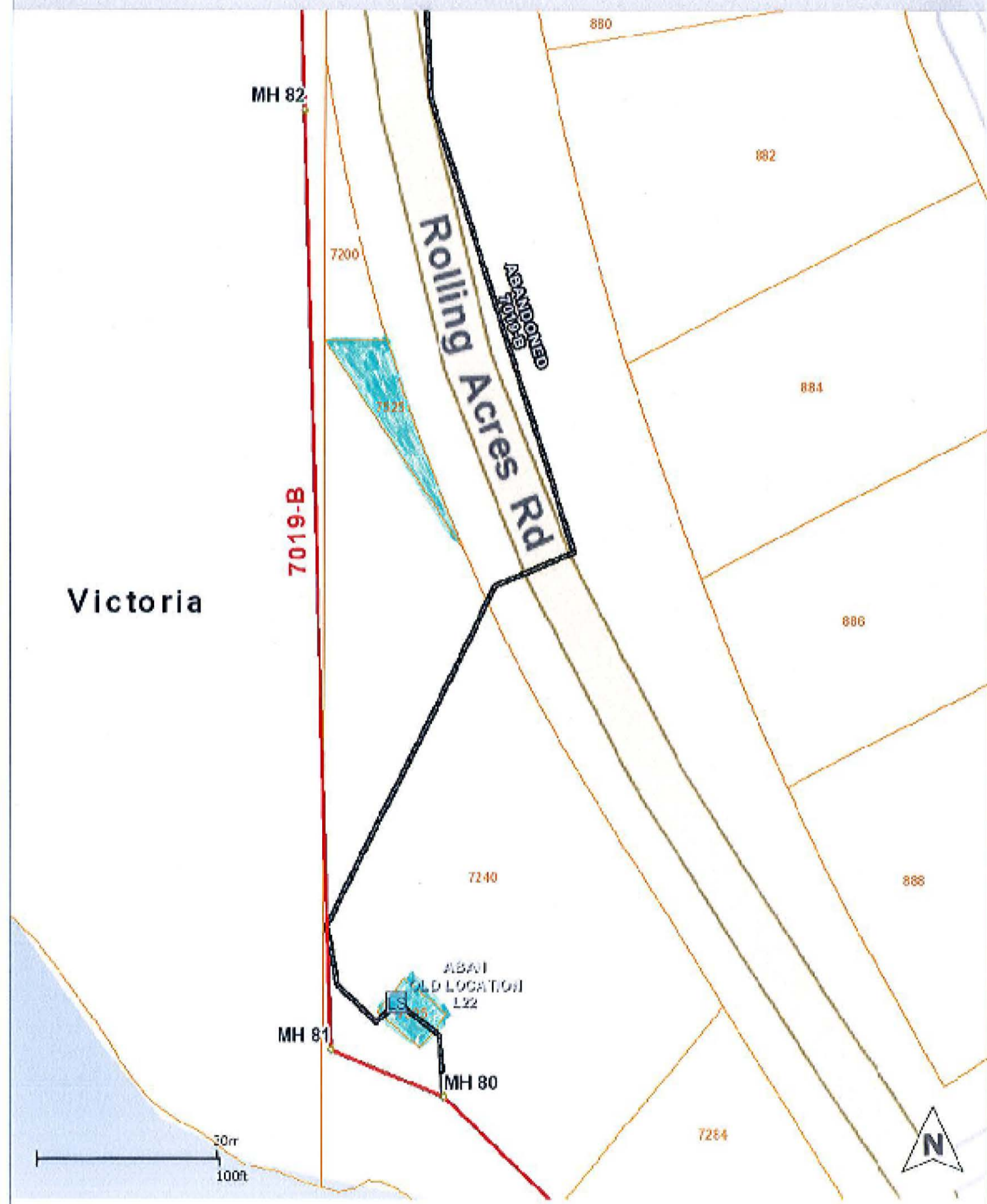


MCES Map



This map is for geographical representation only, for a general location of MCES Interceptor facilities. This map should not be used as a reference for excavation or engineering purposes.

MCES Map



This map is for geographical representation only, for a general location of MCES Interceptor Facilities. This map should not be used as a reference for excavation or engineering purposes.

Printed 1/30/2015

