

Business Item 2015-34:

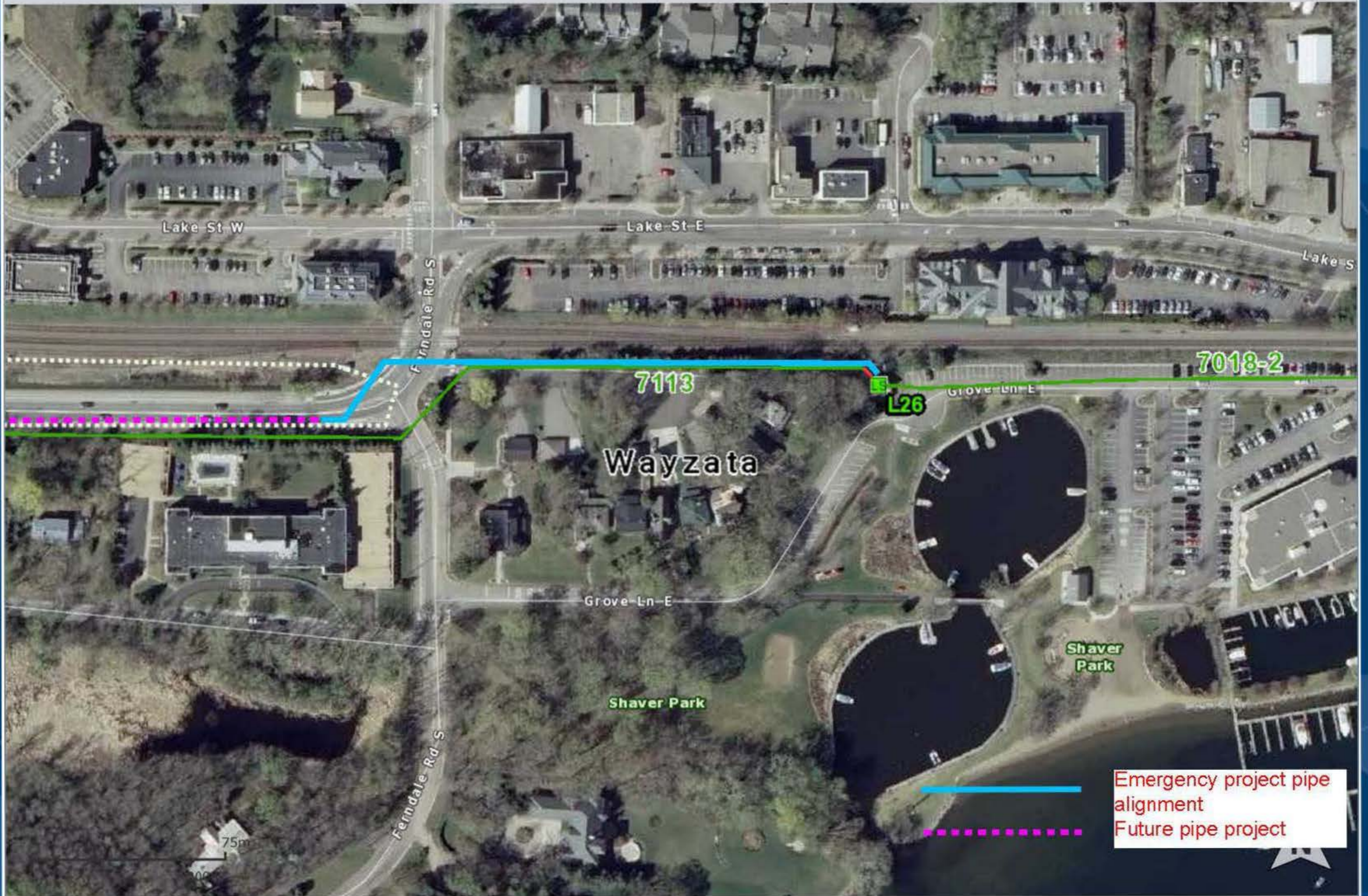
**Authorization to Increase Delegated
Construction Contract Change Order
Authority for Contract 13P184 &
Ratification of Increased Amount for
Emergency Repair of Interceptor
7113**

Karen Keenan, Manager of Interceptor Project Delivery

Environment Committee: February 10, 2015



MCES Map



Emergency project pipe alignment
Future pipe project

This map is for geographical representation only, for a general location of MCES Interceptor Facilities. This map should not be used as a reference for excavation or engineering purposes.



Pipe near Lift Station L26



Additionally, the 20" DIP, CL.52 spool piece pipe at Magney's trailer was measured to verify accuracy of ultrasound. It measured 0.44" and 0.45" where factory is 0.42". Also, the coupon from Phase 2 (SJ Louis) conveyance which was on the DIP portion measured 0.51" in thickness while the ultrasound gave readings ranging from 0.52" to 0.54".

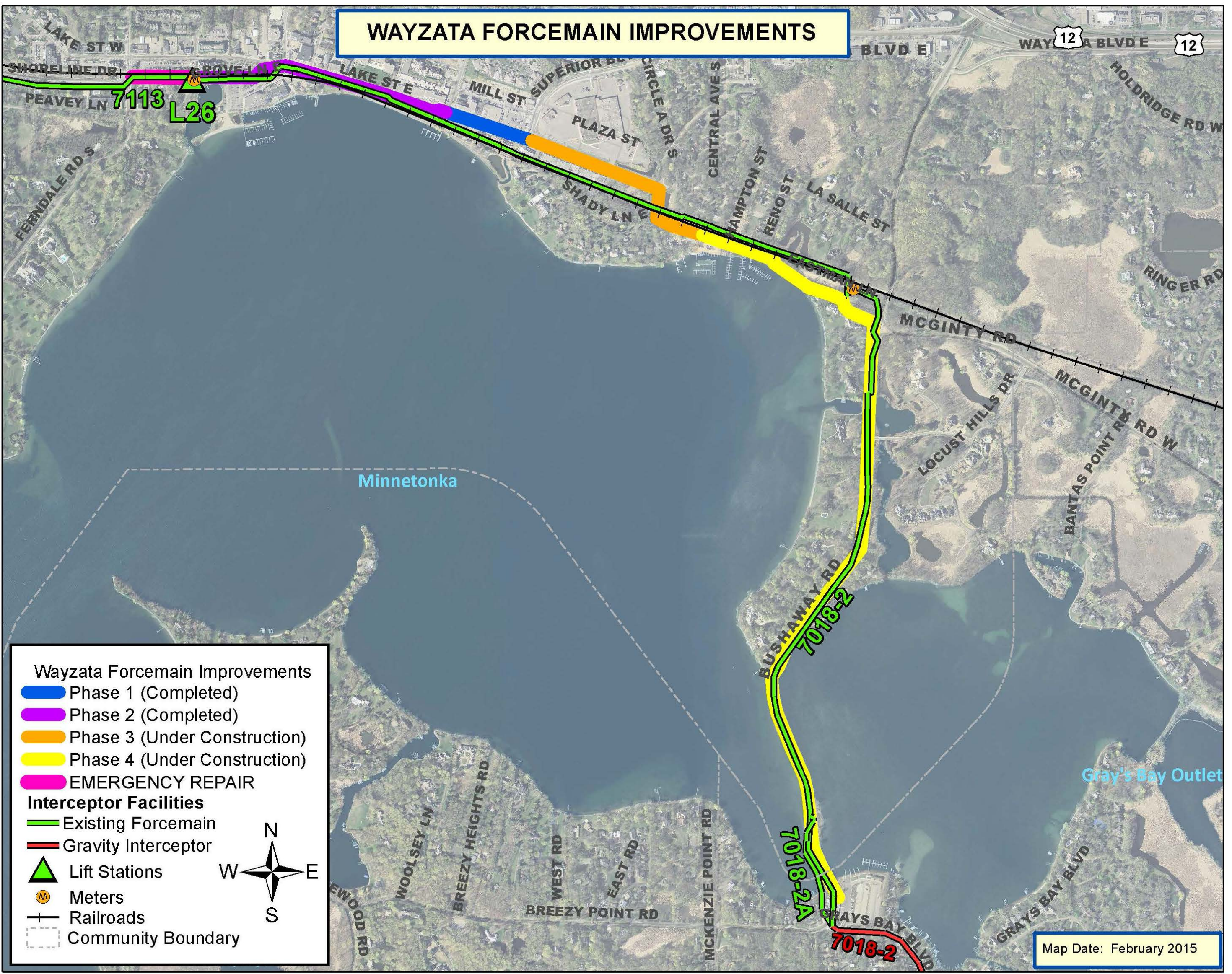
Project Corridor - East



Pipe Corridor - West



WAYZATA FORCEMAIN IMPROVEMENTS



Wayzata Forcemain Improvements

- █ Phase 1 (Completed)
- █ Phase 2 (Completed)
- █ Phase 3 (Under Construction)
- █ Phase 4 (Under Construction)
- █ EMERGENCY REPAIR

Interceptor Facilities

- █ Existing Forcemain
- █ Gravity Interceptor
- ▲ Lift Stations
- ⊙ Meters
- Railroads
- Community Boundary

Map Date: February 2015