

# **Business Item: 2015-289**

## **Authorization to Approve the City of Afton Historic Village Sewage Treatment Area Comprehensive Sewer Plan Amendment Review File No. 20736-3**

Kyle Colvin, Assistant Manager, Engineering Services

Environment Committee: November 10, 2015



# Community Background

- Washington County
- Diversified Rural Community (Thrive)
- Afton is outside of the Council's Long Range Wastewater Service Area
- Entirely served by individual subsurface treatment systems (septic's)
- Historic Village area and existing septic's susceptible to periodic St. Croix river flooding

# Plan Summary

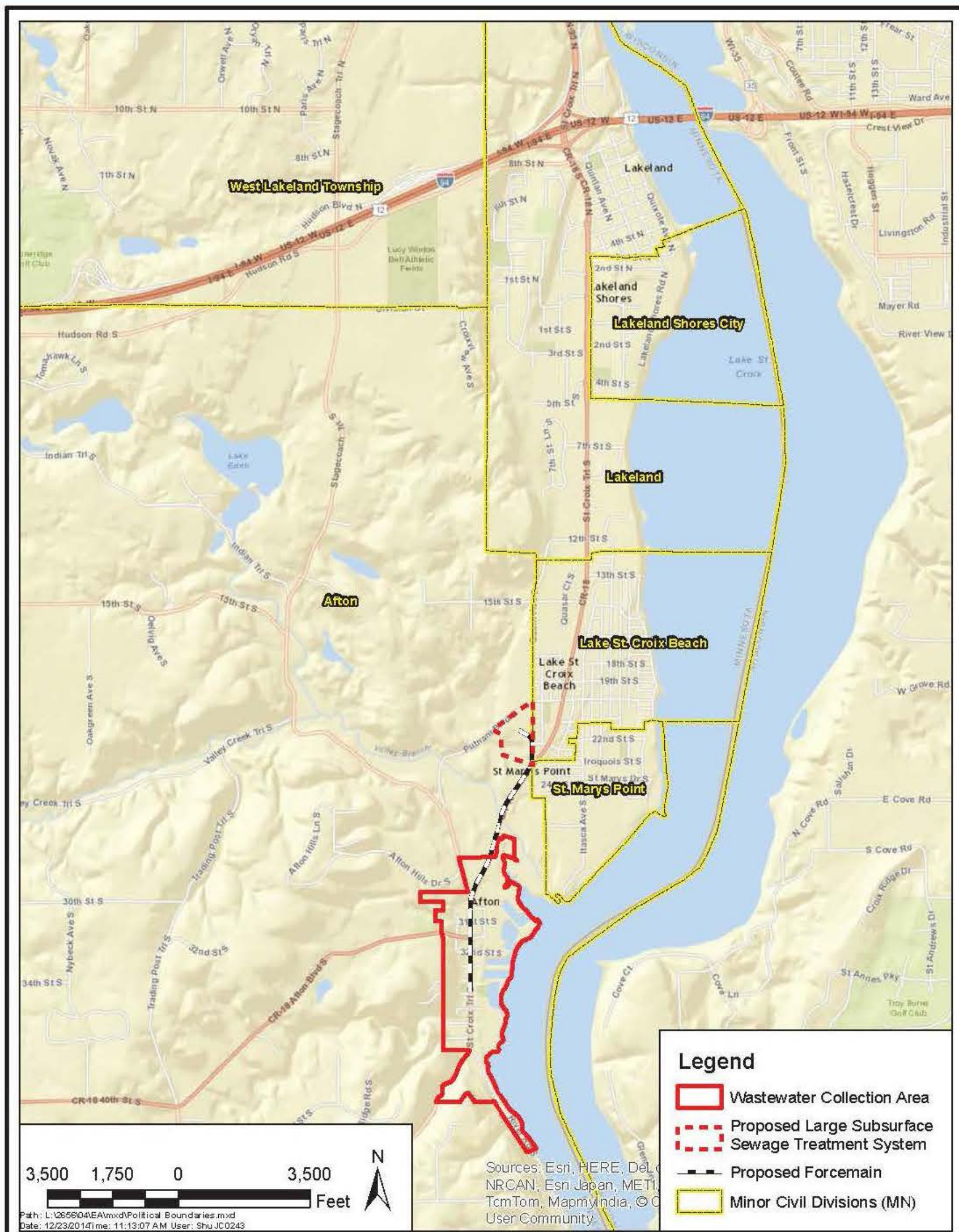
- Provide centralized wastewater collection system for Historic Village area and treatment via large communal subsurface treatment facility
- Ultimate service for 77 households and 22 commercial properties (100 employee's)
- 8-inch gravity collection system, Lift station to pump flow to treatment facility.

# Alternative Cost Analysis

Large Subsurface Treatment Facility	Regional Service
\$3.97 to \$4.76 Million	\$5.26 Million

- 3 alternative subservice treatment systems evaluated
- Regionalization costs: System length to Woodbury and added operational and maintenance costs.
- Estimated monthly sewer service charges
  - \$60.50 to \$90.00 (20-yr. vs. 10-yr. capital loan payoff)
  - \$15 Regional community rate





**CITY OF AFTON**  
 Project Location and Proximity  
 to Adjoining Communities

**Wenck**  
 Engineers - Scientists  
 Business Professionals  
 www.wenck.com

1800 Pioneer Creek Center  
 Maple Plain, MN 55359-0429  
 1-800-472-2232

DEC 2014  
 Figure 3





CITY OF AFTON  
Collection System Service Area Layout

**Wenck**  
Engineers - Scientists  
Business Professionals  
www.wenck.com  
1800 Pioneer Creek Center  
Maple Plain, MN 55359-0429  
1-800-472-2232

DEC 2014  
Figure 4





CITY OF AFTON

Compliance Status

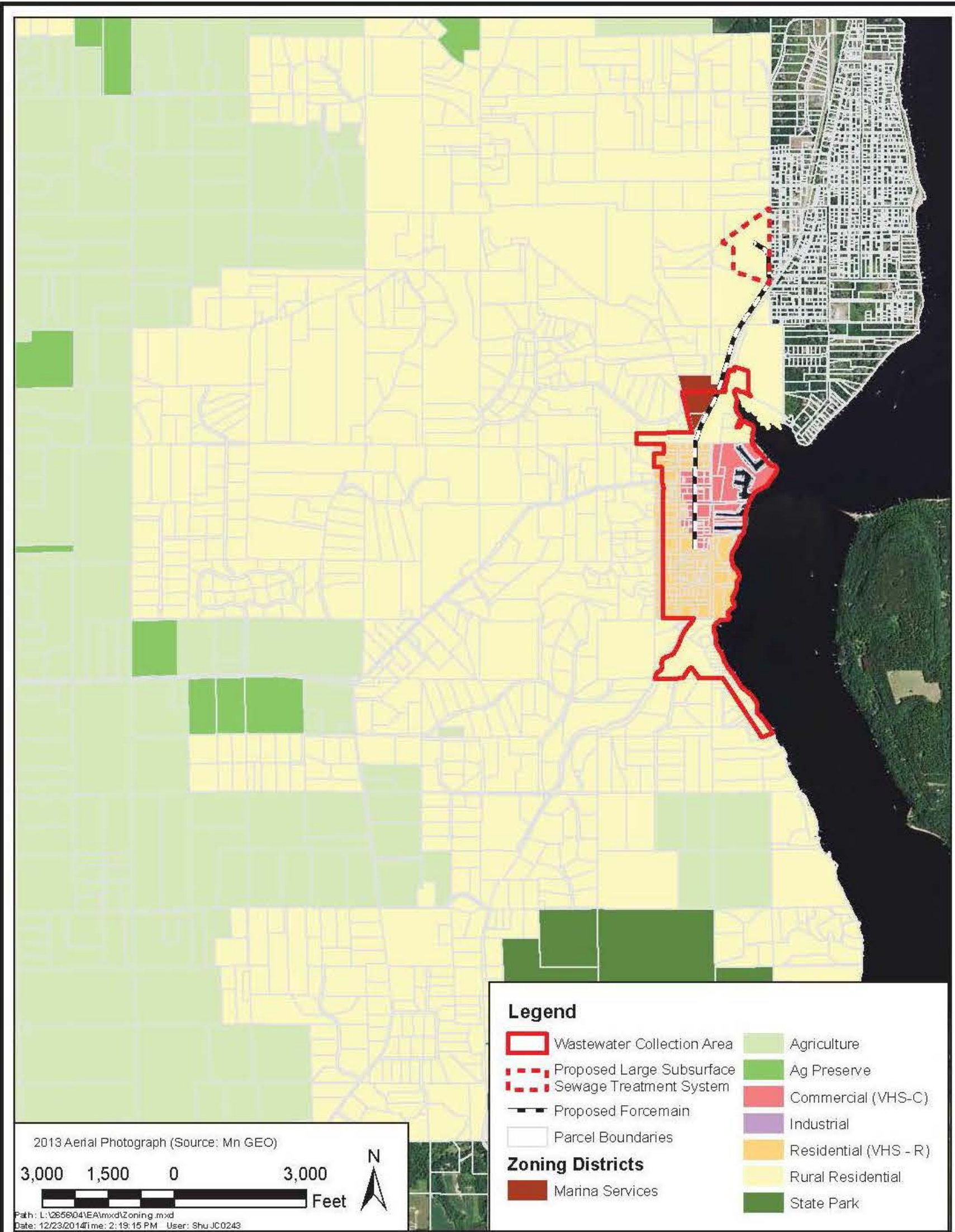
Engineers - Scientists  
Business Professionals  
www.wenck.com

**Wenck**  
1800 Pioneer Creek Center  
Maple Plain, MN 55359-0429  
1-800-472-2232

MAR 2012

Figure 2





2013 Aerial Photograph (Source: Mn GEO)

3,000 1,500 0 3,000 Feet

Path: L:\265604\EA\mxd\Zoning.mxd  
 Date: 12/23/2014 Time: 2:19:15 PM User: Shu.JC0243

**Legend**

Wastewater Collection Area	Agriculture
Proposed Large Subsurface Sewage Treatment System	Ag Preserve
Proposed Forcemain	Commercial (VHS-C)
Parcel Boundaries	Industrial
<b>Zoning Districts</b>	Residential (VHS - R)
Marina Services	Rural Residential
	State Park

CITY OF AFTON

City of Afton Zoning

**Wenck**  
 Engineers - Scientists  
 Business Professionals  
 www.wenck.com

1800 Pioneer Creek Center  
 Maple Plain, MN 55359-0429  
 1-800-472-2232

DEC 2014

Figure 11



# Proposed Action

- That the Metropolitan Council adopt the review record provided and approve the City of Afton's amended comprehensive sewer plan which outlines the provision of locally provided wastewater services for the historic village area.