

Joint Business Item: 2015-250 SW
City of Landfall Village 2030
Comprehensive Plan Update,
Review File No. 20781-1

Kyle Colvin, Assistant Manager, Engineering Services

Environment Committee: October 27, 2015



Statutory Requirements

- MN Statute 473.513
 - Requires local governments to develop, adopt and submit local wastewater plans to Metropolitan Council for **approval**.
 - Requires a local government to modify its plan if the Council deems that it negatively impacts or departs from the regional system and system plan.
 - Requires local governments to copy the Council on permit applications to the MnPCA for altering or improving its local wastewater systems.

Community & Plan Summary

- Washington County
- Fully Developed Manufactured Home Park
- Residential + 2 Commercial Businesses
- Fully served by municipal sewer (no septic's)
- 300 Households + 90 employees
- City has NOT been identified as a community having excess I/I under the Council's Regional I/I Mitigation Program

Maplewood

Oakdale

RAMSEY

Landfall

WASHINGTON

Tanners

120

1-WO-501

Landfall

CENTURY AVE N

M021

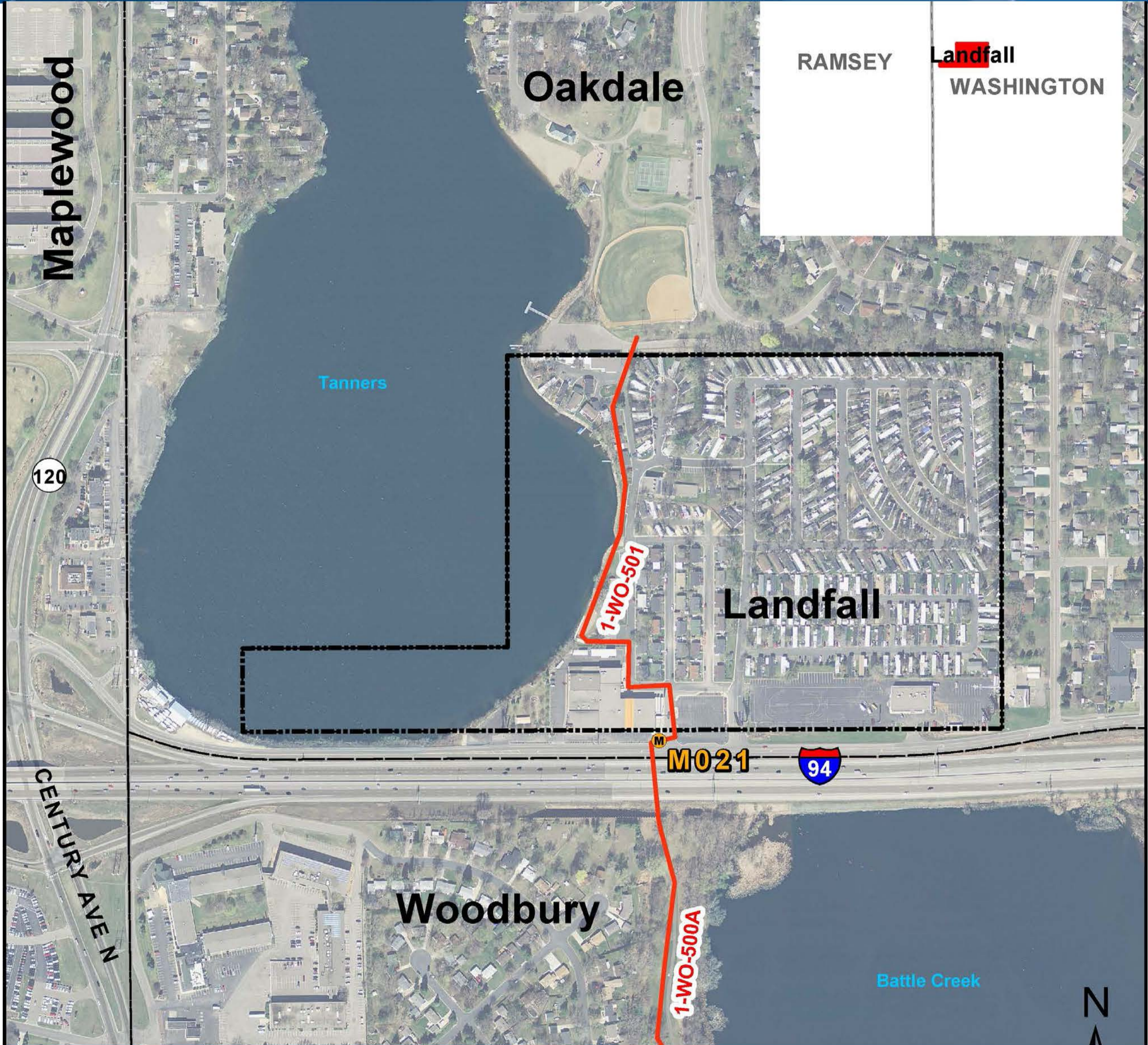
94

Woodbury

1-WO-500A

Battle Creek

N




City of Landfall

Existing and 2030 Future Land Use

Legend

 Landfall City Limits


Roadway Functional Classification

 Principal Arterial

 Major Collector

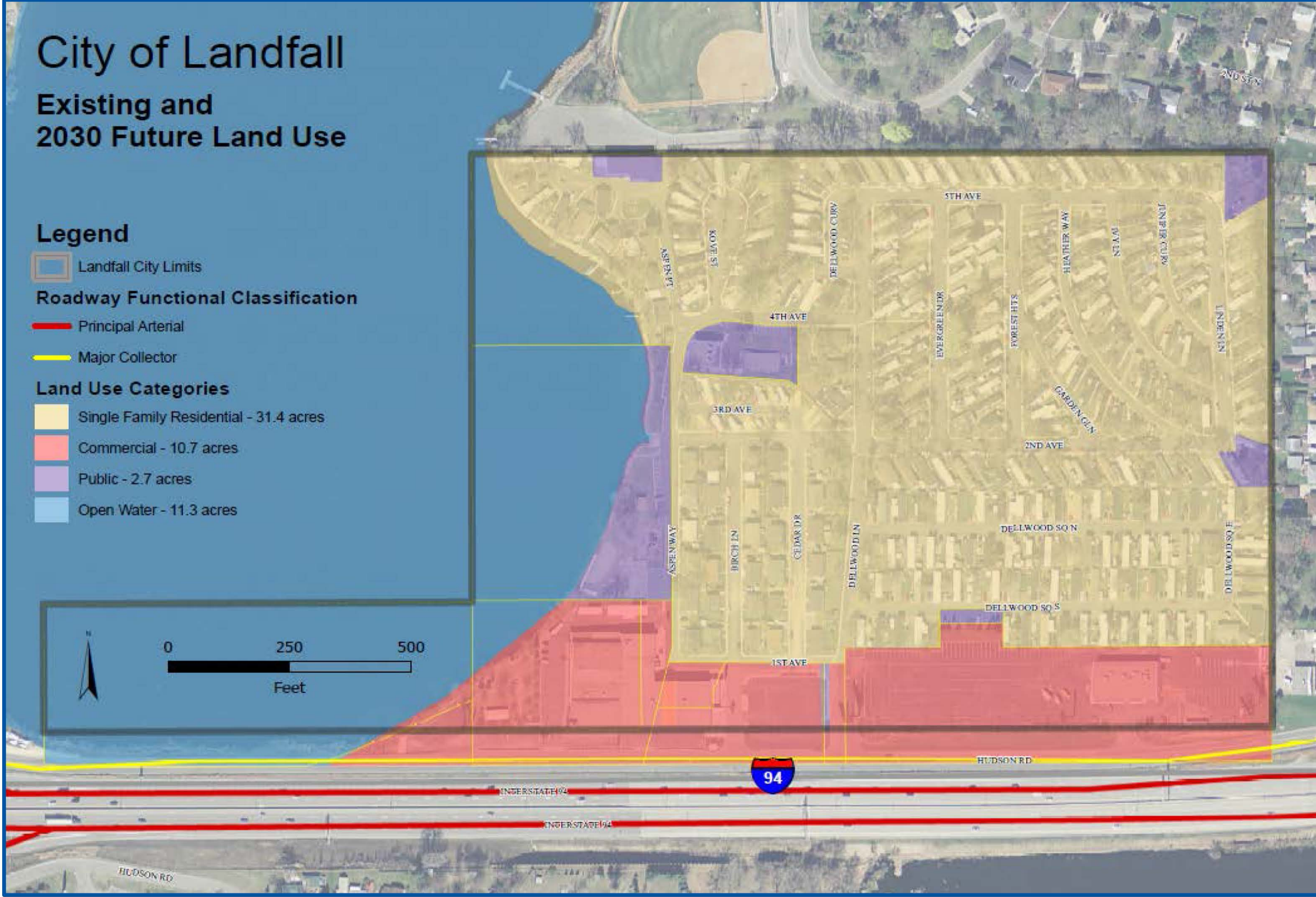
Land Use Categories

 Single Family Residential - 31.4 acres

 Commercial - 10.7 acres

 Public - 2.7 acres

 Open Water - 11.3 acres



Proposed Action

- That the Metropolitan Council approve the City of Landfall's Tier II Comprehensive Sewer Plan