

Business Item 2016-85:

**Authorization to Acquire and
Condemn of Real Property for
MCES Project 802855, Lift Station
L-18 in Shorewood**

Karen Keenan, Manager of Interceptor Project Delivery

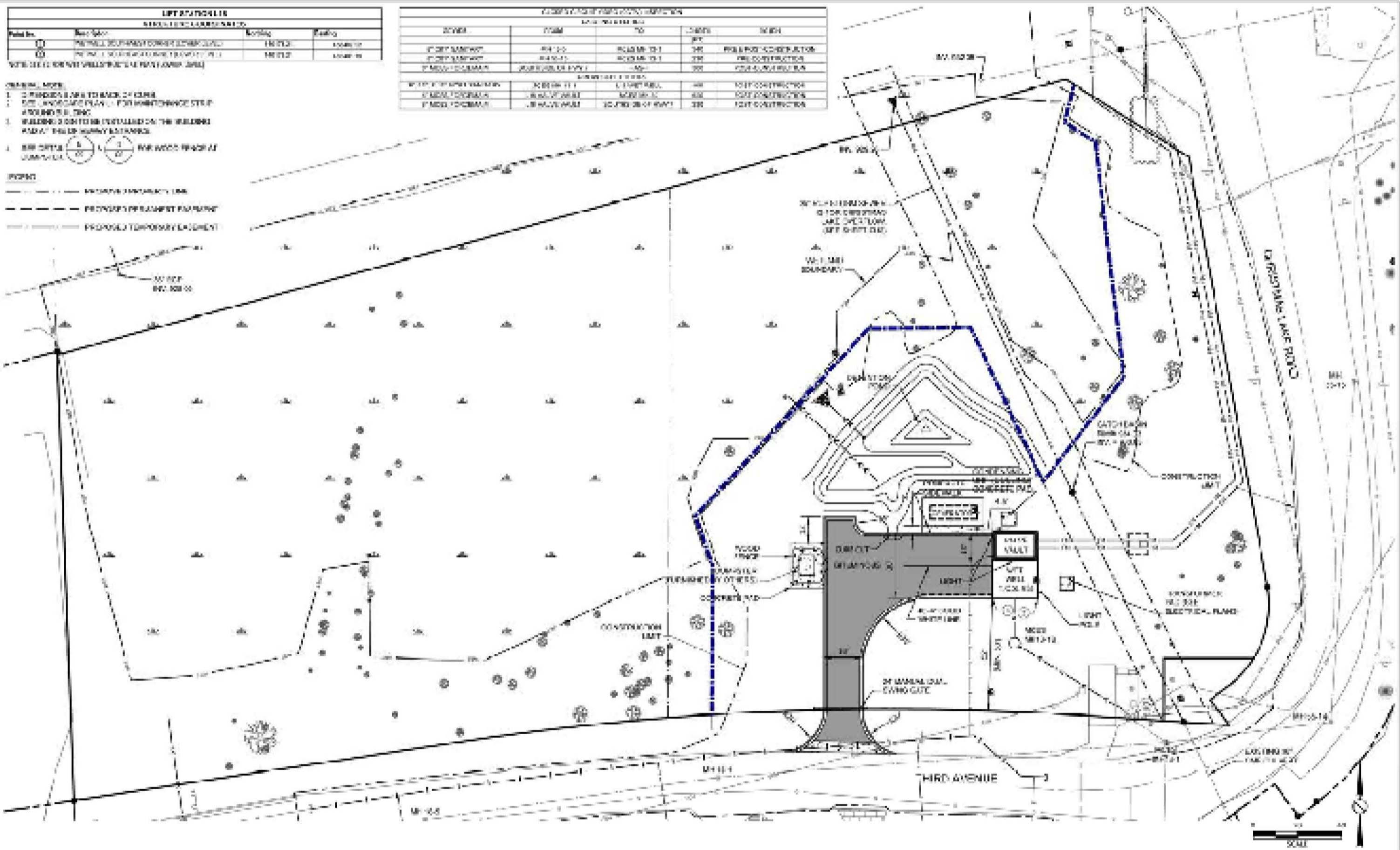
Environment Committee: April 26, 2016



LIFT STATION 18			
NEEDS TO BE CORRECTED			
Point No.	Description	Code	Rating
1	PROPOSED CONSTRUCTION AREA	18-010	CONSTRUCTION
2	PROPOSED CONSTRUCTION AREA	18-010	CONSTRUCTION

CONSTRUCTION MATERIALS				
ITEM	FROM	TO	LENGTH	NOTE
1. 4" DEEP SAND	18-010	18-010	100	FOR CONSTRUCTION
2. 4" DEEP SAND	18-010	18-010	100	FOR CONSTRUCTION
3. 4" DEEP SAND	18-010	18-010	100	FOR CONSTRUCTION
4. 4" DEEP SAND	18-010	18-010	100	FOR CONSTRUCTION
5. 4" DEEP SAND	18-010	18-010	100	FOR CONSTRUCTION
6. 4" DEEP SAND	18-010	18-010	100	FOR CONSTRUCTION
7. 4" DEEP SAND	18-010	18-010	100	FOR CONSTRUCTION
8. 4" DEEP SAND	18-010	18-010	100	FOR CONSTRUCTION
9. 4" DEEP SAND	18-010	18-010	100	FOR CONSTRUCTION
10. 4" DEEP SAND	18-010	18-010	100	FOR CONSTRUCTION

- GENERAL NOTES:**
2. PROVIDE 10% TO BACK OF CURB
 3. SEE LANDSCAPE PLAN FOR MAINTENANCE STRIP
 4. SEE LIFT STATION 18 FOR CONSTRUCTION
 5. SEE LIFT STATION 18 FOR CONSTRUCTION
 6. SEE LIFT STATION 18 FOR CONSTRUCTION
 7. SEE LIFT STATION 18 FOR CONSTRUCTION
 8. SEE LIFT STATION 18 FOR CONSTRUCTION
 9. SEE LIFT STATION 18 FOR CONSTRUCTION
 10. SEE LIFT STATION 18 FOR CONSTRUCTION
- LEGEND:**
- PROPOSED CONSTRUCTION LIMIT
 - PROPOSED PERMANENT EASEMENT
 - PROPOSED TEMPORARY EASEMENT



ALL RIGHTS RESERVED BY STANTEC INC. FOR THE DESIGN AND CONSTRUCTION OF THIS PROJECT. ANY REUSE OR MODIFICATION OF THIS DOCUMENT WITHOUT THE WRITTEN PERMISSION OF STANTEC INC. IS STRICTLY PROHIBITED.

PROJECT: STANTEC CLIENT: STANTEC		DATE: 2024 DRAWN BY: STANTEC CHECKED BY: STANTEC APPROVED BY: STANTEC		PROJECT NO: 255500003 SHEET NO: 18-010	SHEET TITLE: SITE & UTILITY PLAN	C3
---	--	--	--	---	---	-----------