

# **Business Item 2016-89:**

Authorization to Negotiate and Execute Memorandum of Understanding with the City of West St. Paul, MCES Ongoing Inflow and Infiltration Mitigation Program

Jeannine Clancy, Manager, MCES Community Programs

Environment Committee: April 26, 2016



# MCES I&I Program Goals

- Protect public health
  - Minimize basement backups
  - Minimize overflows to the environment
- Protect water quality
- Encourage regional, local, and private investment into the wastewater collection system
- Avoid high cost to convey and treat excessive wet weather flow

# INFLOW & INFILTRATION SOURCES

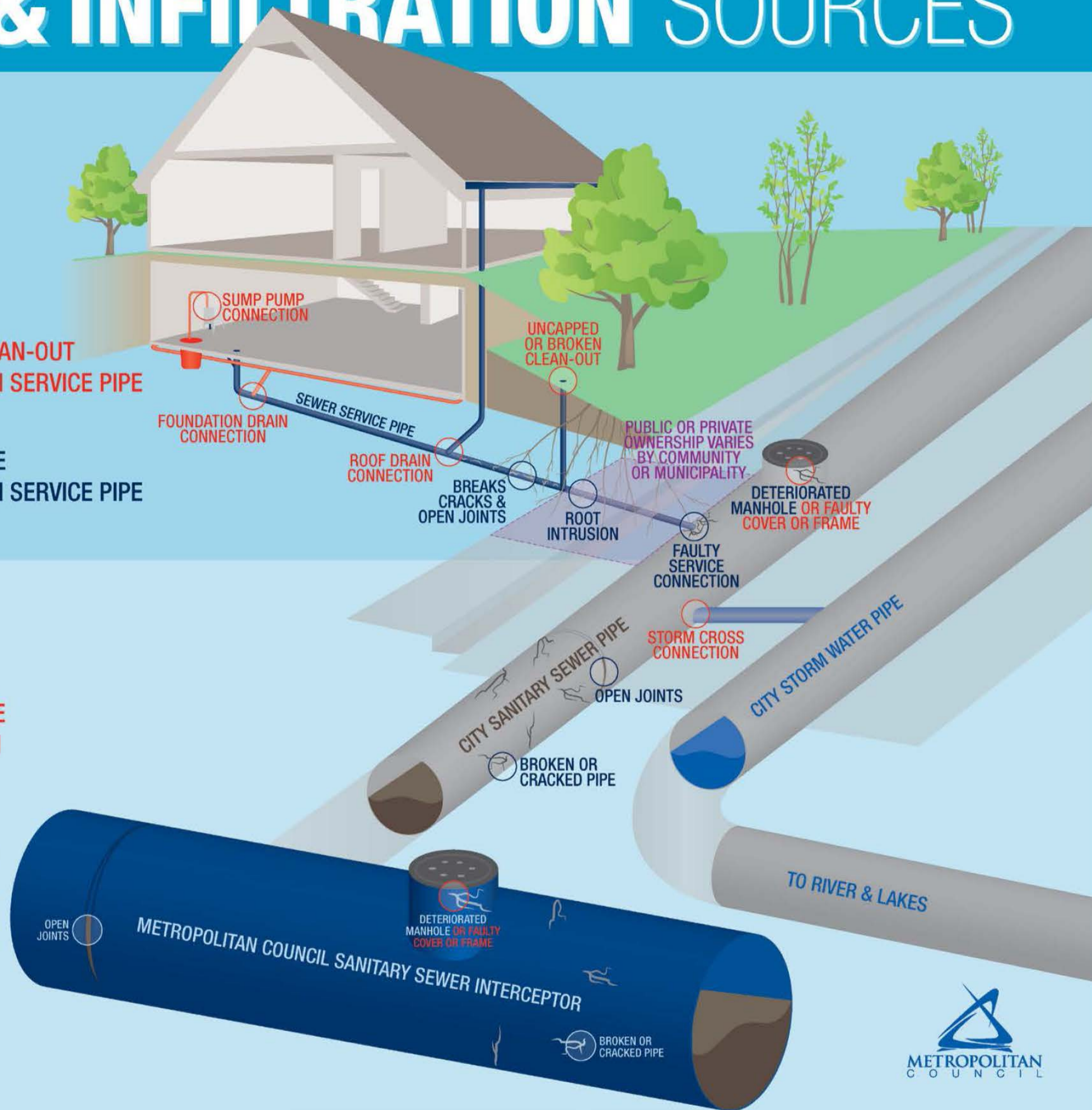
## PRIVATE

### INFLOW SOURCES

- SUMP PUMP CONNECTION
- CONNECTED FOUNDATION DRAIN
- ROOF DRAIN CONNECTION
- UNCAPPED OR BROKEN SEWER CLEAN-OUT
- BREAKS, CRACKS & OPEN JOINTS IN SERVICE PIPE

### INFILTRATION SOURCES

- ROOT INTRUSION INTO SERVICE PIPE
- BREAKS, CRACKS & OPEN JOINTS IN SERVICE PIPE



## PUBLIC

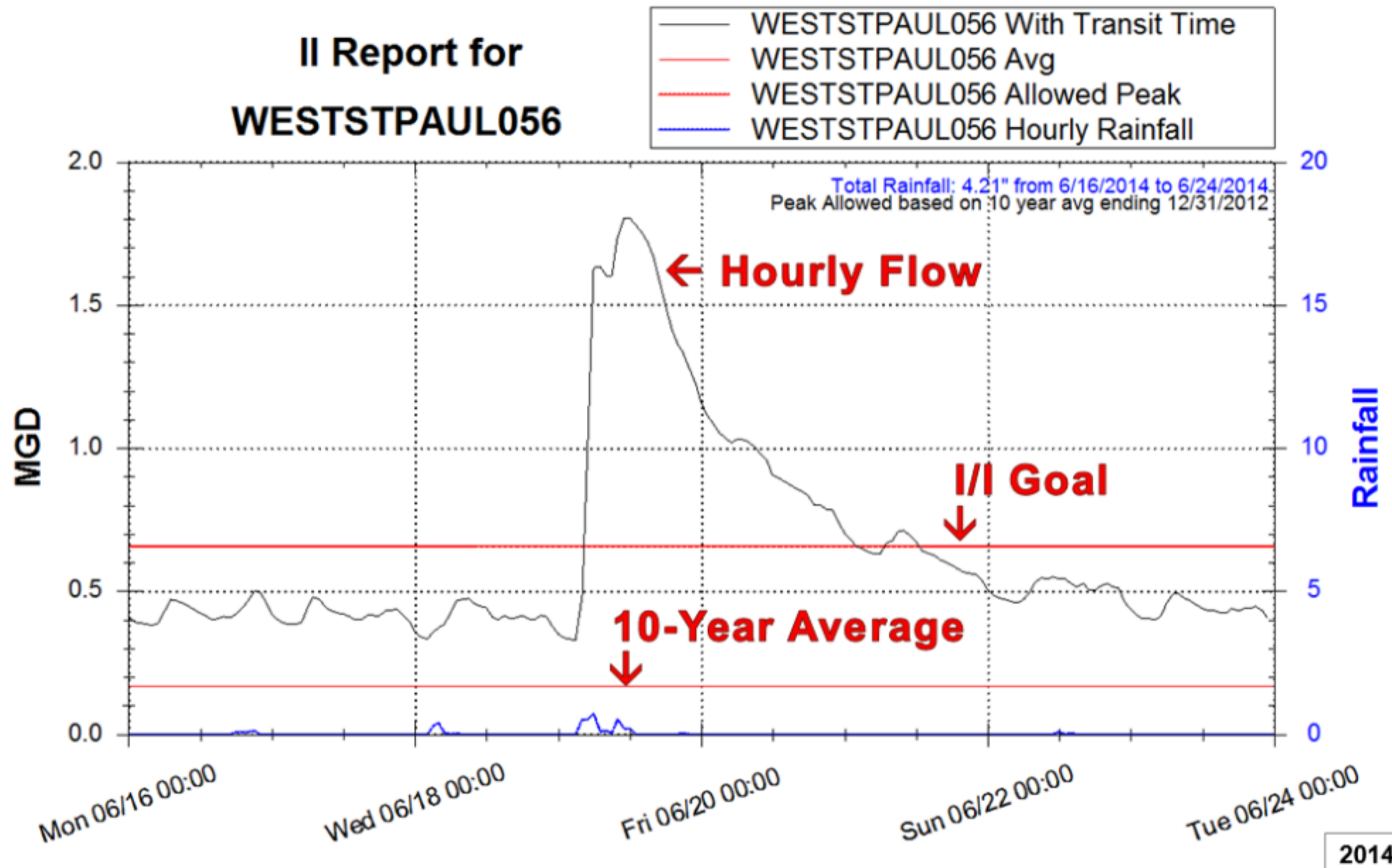
### INFLOW SOURCES

- FAULTY MANHOLE COVER OR FRAME
- STORM WATER CROSS CONNECTION

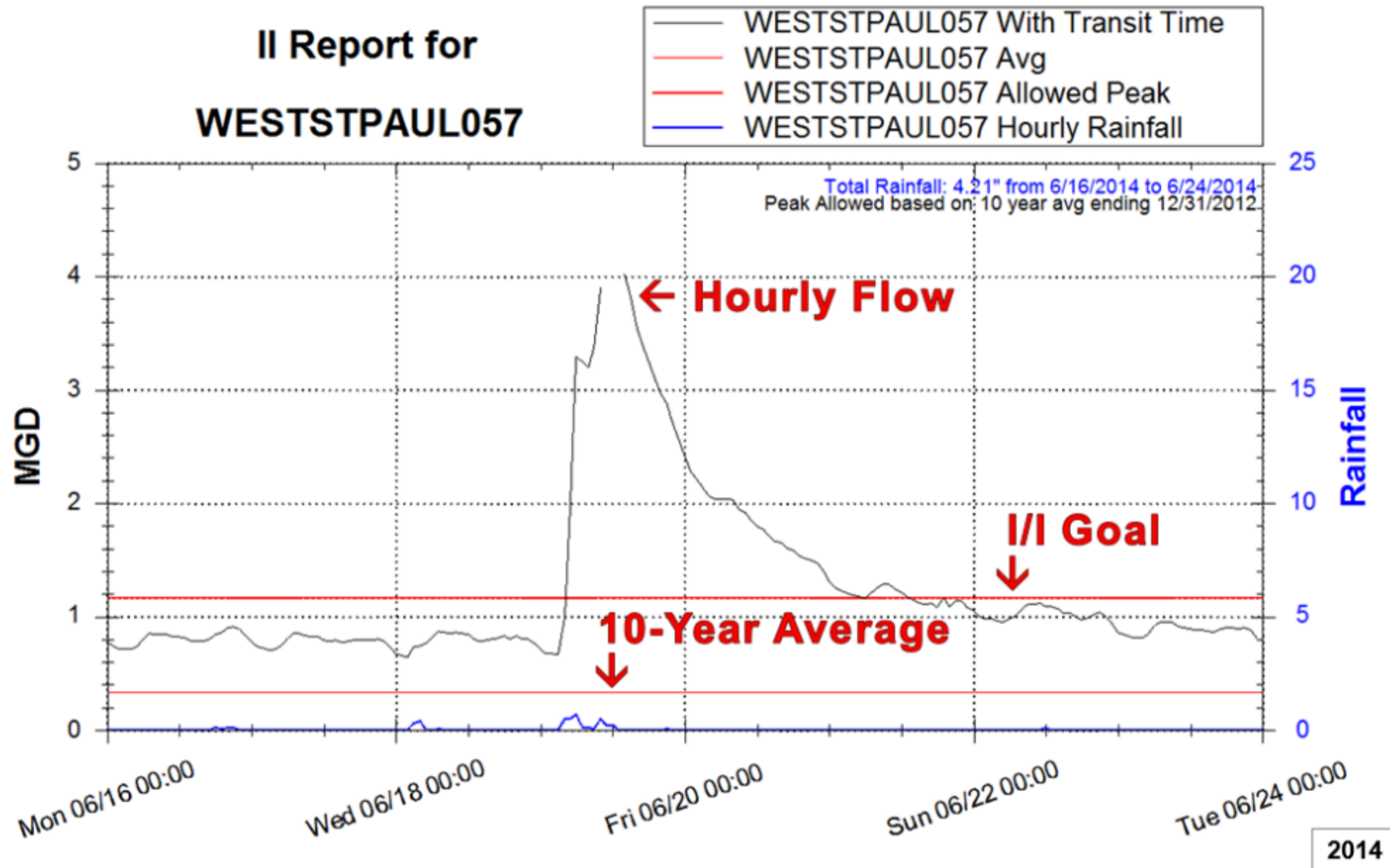
### INFILTRATION SOURCES

- DETERIORATED MANHOLE
- FAULTY SERVICE PIPE CONNECTION
- BROKEN OR CRACKED PIPE
- OPEN JOINTS IN PIPE

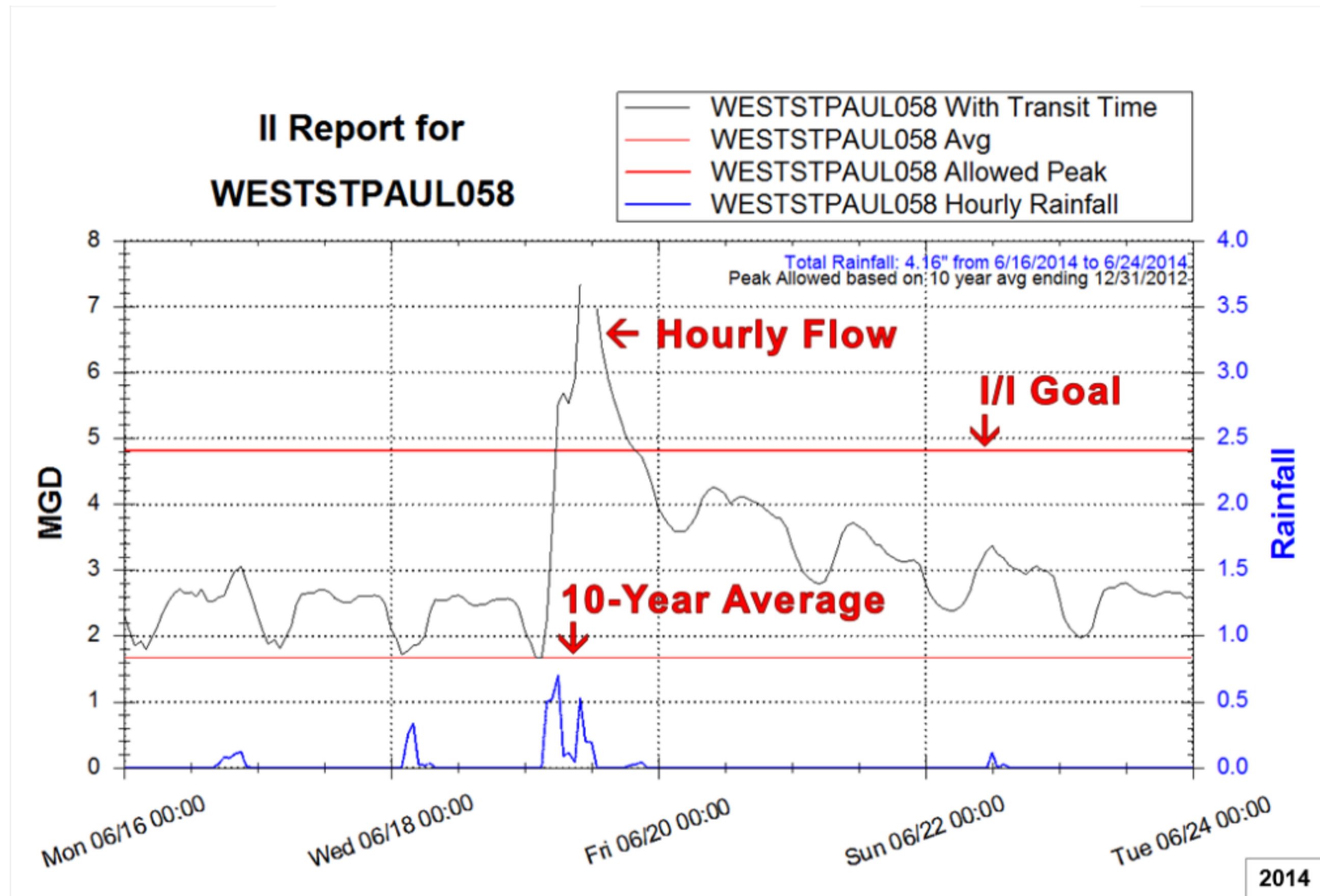
# West St. Paul – June 2014



# West St. Paul – June 2014



# West St. Paul – June 2014



# West St. Paul 2014 Exceedance

## Net Exceedance Determination

Based on maximum exceedance (multiple metersheds) in monitoring period. A \$2.7 M total I&I work plan amount for the city was computed from the maximum exceedances as recorded below:

Date	Metershed	Exceedance
6/19/14	M056	1.15
6/19/14	M057	2.80
6/19/14	M058	2.58
<b>Total</b>		<b>6.53</b>

# West St. Paul Memorandum of Understanding

- Document strategy for private property I&I mitigation within the community.
- Recognize the challenges faced by the community.
- Establish opportunities to measure program impact.



# Questions